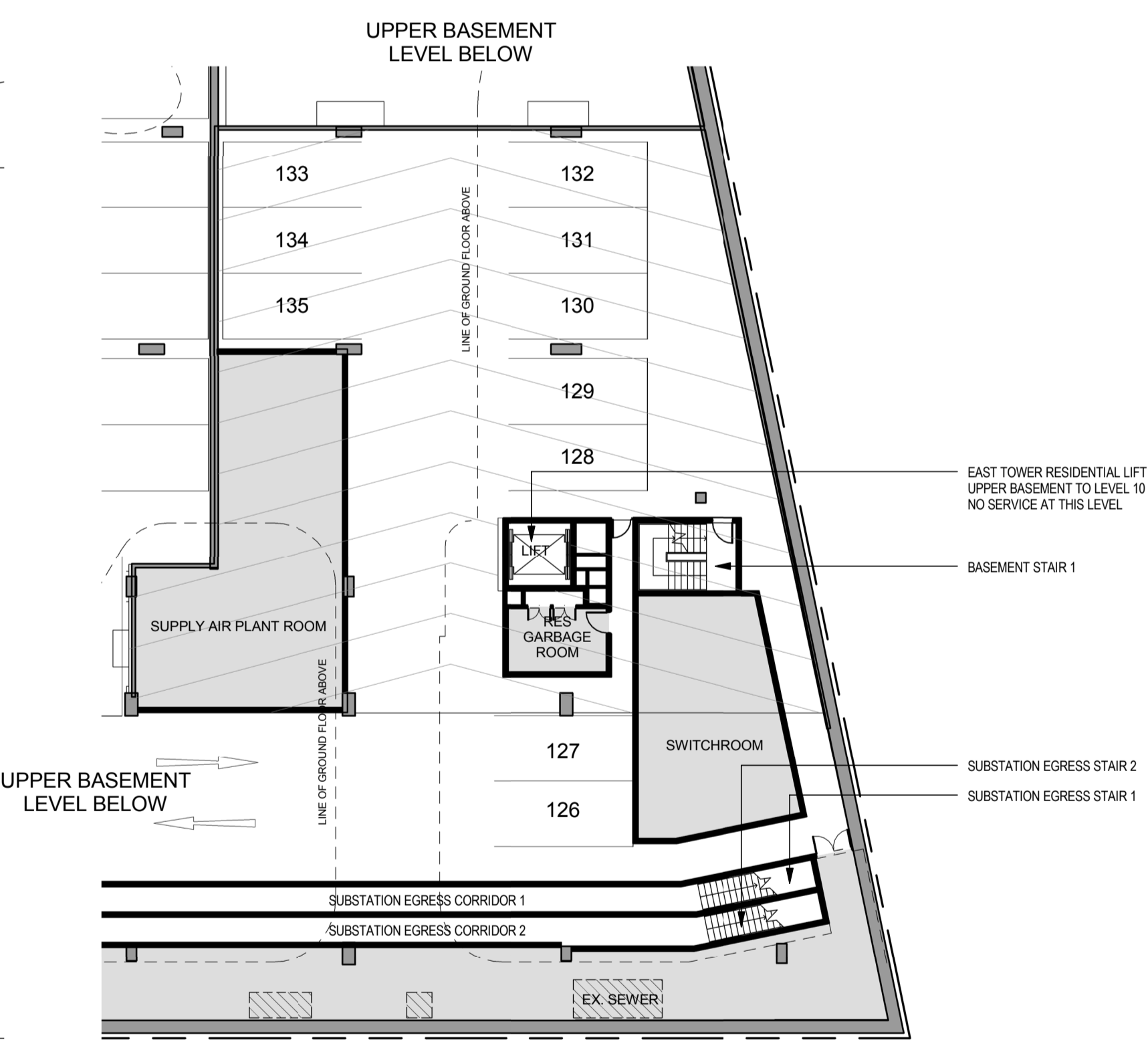
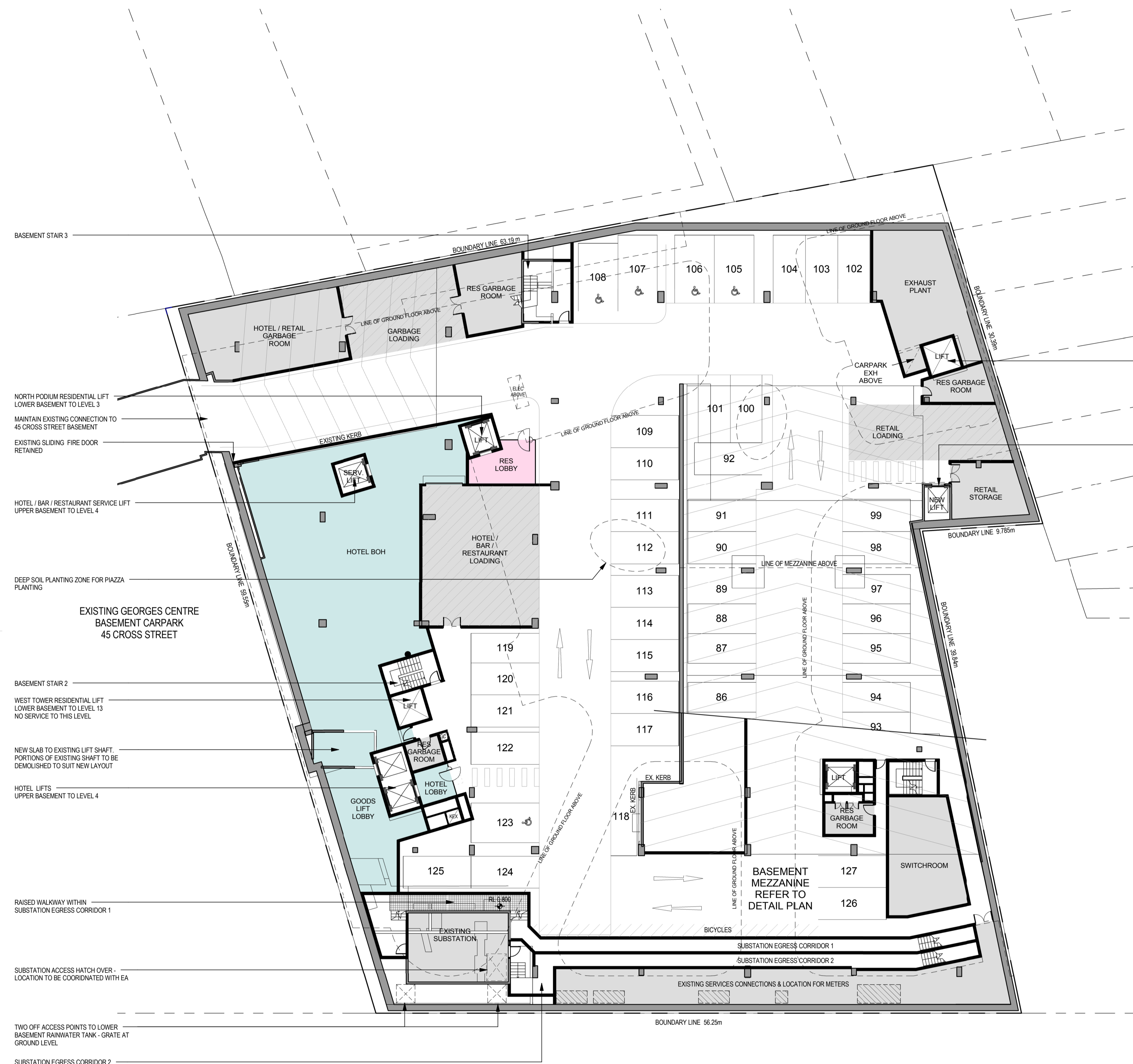


Do not scale drawings. Verify all dimensions on site

issue	amendment	date
-	PRELIMINARY ISSUE FOR DISCUSSION	01.12.08
A	PRELIMINARY ISSUE FOR INFORMATION	09.12.08
B	PRELIMINARY ISSUE FOR INFORMATION	15.12.08
C	PRELIMINARY ISSUE FOR INFORMATION	16.01.09
D	ISSUED TO TRAFFIC CONSULTANTS	30.01.09
E	ISSUED TO TRAFFIC CONSULTANTS	02.02.09
F	ISSUE FOR QA REVIEW	02.02.09
G	ISSUE FOR INFORMATION	10.02.09
H	AMENDMENT TO CARPARK SCHEDULE	11.02.09
I	ISSUE FOR ENVIRONMENTAL ASSESSMENT	20.02.09
J	ISSUE FOR INFORMATION	24.07.09
K	ISSUE FOR INFORMATION	12.08.09
L	ISSUE FOR PREFERRED PROJECT REPORT	21.08.09



LEGEND:

- HOTEL
- RESIDENTIAL
- RETAIL

Symbol	Description
	19 (st) 20 (st) B-POWER CAR STACKER
	EXISTING STRUCTURE
	NEW COLUMN TO ENGINEER'S DETAILS
	COL

CAR PARKING SUMMARY	
RETAIL/RESTAURANT SPACES	32
HOTEL SPACES	35
RESIDENTIAL SPACES	68
TOTAL SPACES PROVIDED (INCL. 7 DISABLED SPACES)	135

1 UPPER BASEMENT
 DA03-06 Scale: 1:200

2 BASEMENT MEZZANINE
 DA03-06 Scale: 1:200

project
33 CROSS STREET, DOUBLE BAY

drawing
UPPER BASEMENT FLOOR PLAN

scale at A1	1:200 @ A1	drawing no.	
drawn	AD/TF/III/DR		DA02-02
checked	CO	issue	
project no	070068		L