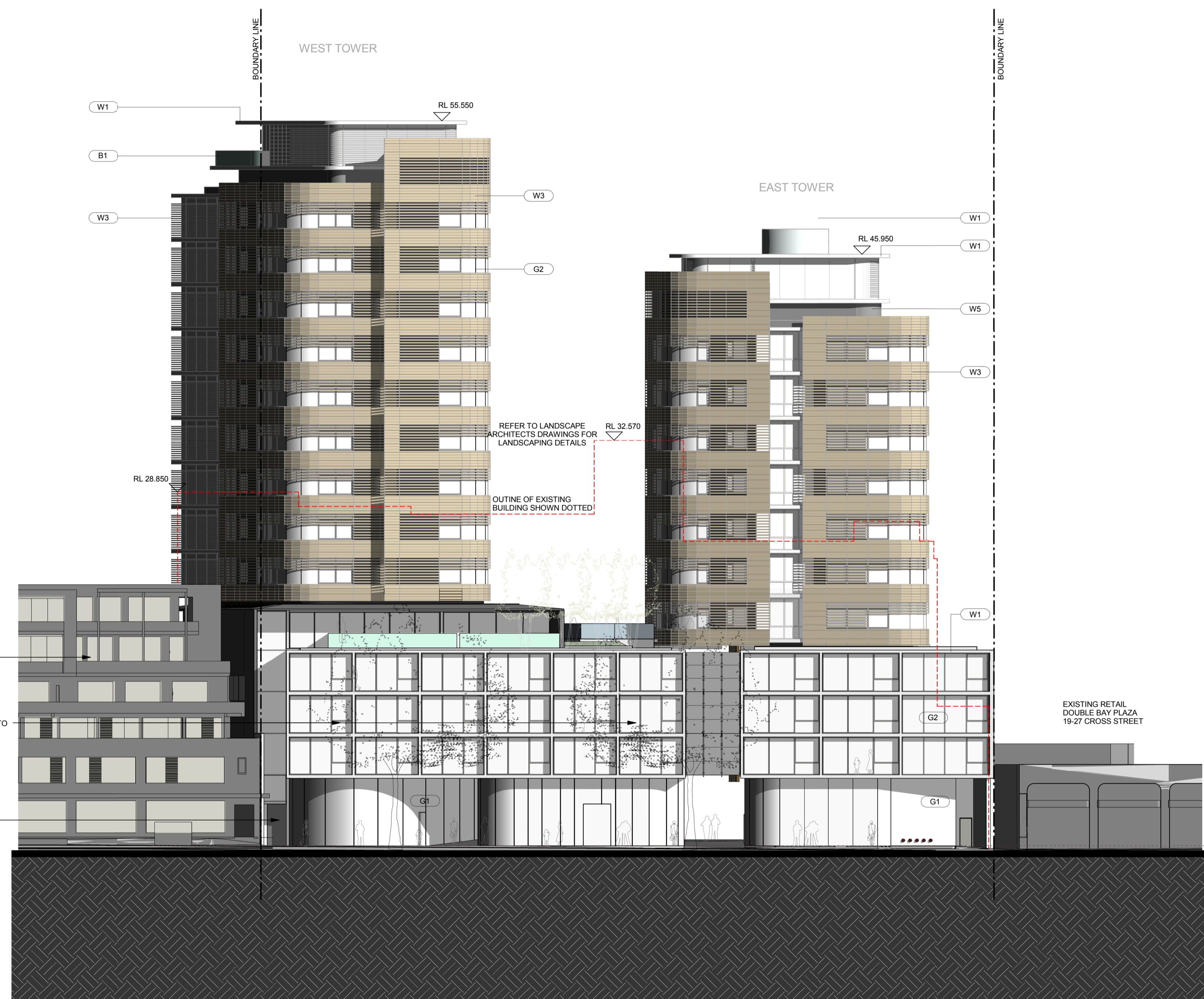


Do not scale drawings. Verify all dimensions on site

issue	amendment	date
-	ISSUE FOR QA REVIEW	02.02.09
A	ISSUE FOR INFORMATION	10.02.09
B	ISSUE FOR ENVIRONMENTAL ASSESSMENT	20.02.09
C	ISSUE FOR INFORMATION	12.08.09
D	ISSUE FOR PREFERRED PROJECT REPORT	21.8.09

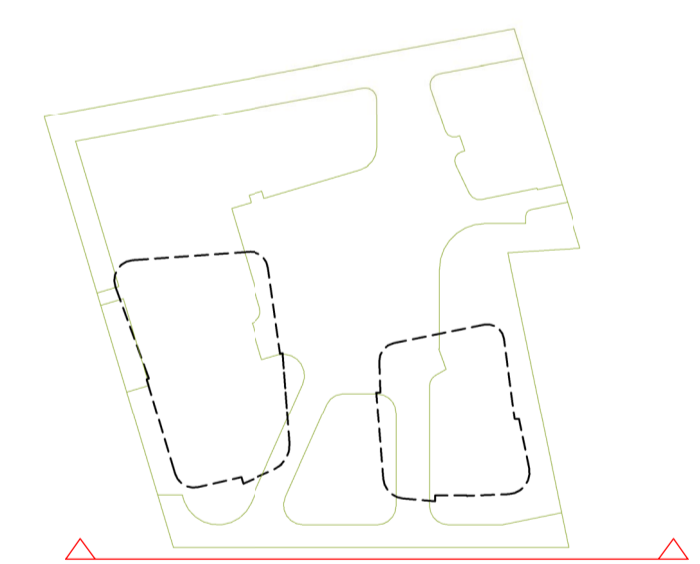


WEST TOWER ROOF	55.550 RL
Level 14 TERRACE	52.300 RL
Level 14 PLANT	50.300 RL
Level 13 RES	47.100 RL
EAST TOWER ROOF	45.950 RL
Level 12 RES	43.900 RL
Level 11 TERRACE	42.700 RL
Level 11 RES / PLANT	40.700 RL
Level 10 RES	37.500 RL
Level 9 RES	34.300 RL
Level 8 RES	31.100 RL
Level 7 RES	27.900 RL
Level 6 RES	24.700 RL
Level 5 RES	21.500 RL
Level 4 (EAST TOWER)	18.300 RL
Level 4 HOTEL	17.600 RL
Level 3 HOTEL/RES	14.500 RL
Level 2 HOTEL/RES	11.500 RL
Level 1 HOTEL/RES	8.500 RL
Ground Floor Cross Street	3.400 RL

MATERIAL + FINISHES LEGEND

- W1 CONCRETE - LAZUR FINISH
- W2 ALUMINIUM METAL CLADDING
- W3 MODULAR TERRACOTTA FACADE SCREEN
- W4 ALUMINIUM LOUVRE SYSTEM
- W5 ZINC CLADDING
- W6 STONE CLADDING
- W7 ALUMINIUM LIGHT SHELF
- W8 VERTICAL TERRACOTTA BLADE SCREEN
- W9 OPERABLE TIMBER BATTEN SCREEN SYSTEM
- G1 FRAMELESS GLAZING
- G2 ALUMINIUM FRAMED GLAZING SUITE
- G3 ALUMINIUM FRAMED GLAZING SUITE WITH EXTERNAL RETRACTABLE BLIND SYSTEM
- B1 FRAMELESS GLASS BALUSTRADE

KEY PLAN



1 South Elevation
 Scale: 1 : 200