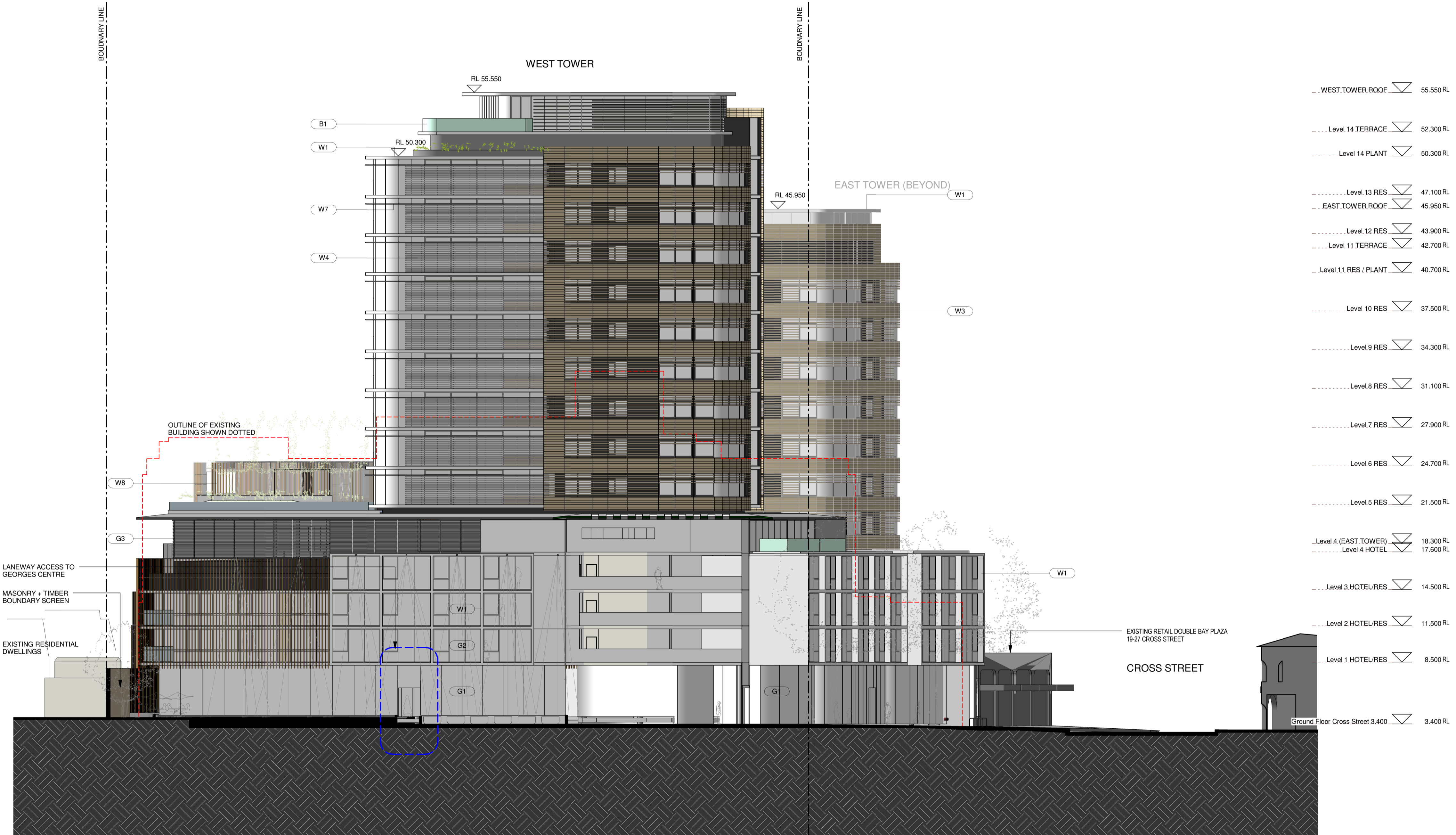


Do not scale drawings. Verify all dimensions on site

issue	amendment	date
-	ISSUE FOR QA REVIEW	02.02.09
A	ISSUE FOR INFORMATION	10.02.09
B	ISSUE FOR ENVIRONMENTAL ASSESSMENT	20.02.09
C	ISSUE FOR INFORMATION	12.08.09

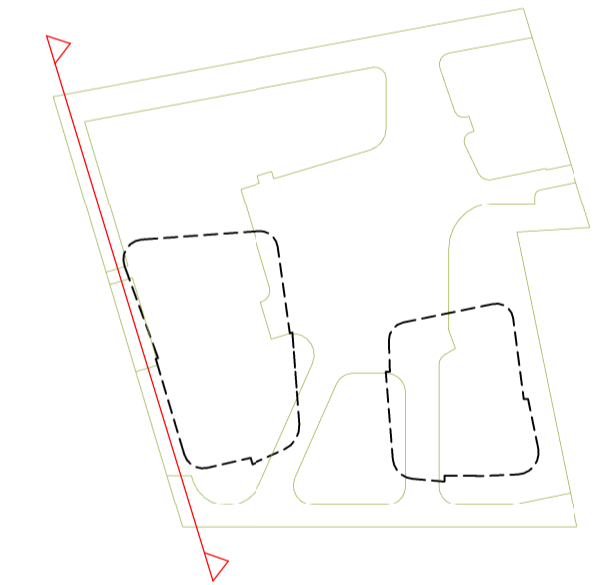


WEST TOWER ROOF	▽	55.550 RL
Level 14 TERRACE	▽	52.300 RL
Level 14 PLANT	▽	50.300 RL
Level 13 RES	▽	47.100 RL
EAST TOWER ROOF	▽	45.950 RL
Level 12 RES	▽	43.900 RL
Level 11 TERRACE	▽	42.700 RL
Level 11 RES / PLANT	▽	40.700 RL
Level 10 RES	▽	37.500 RL
Level 9 RES	▽	34.300 RL
Level 8 RES	▽	31.100 RL
Level 7 RES	▽	27.900 RL
Level 6 RES	▽	24.700 RL
Level 5 RES	▽	21.500 RL
Level 4 (EAST TOWER)	▽	18.300 RL
Level 4 HOTEL	▽	17.600 RL
Level 3 HOTEL/RES	▽	14.500 RL
Level 2 HOTEL/RES	▽	11.500 RL
Level 1 HOTEL/RES	▽	8.500 RL
Ground Floor Cross Street	▽	3.400 RL

**MATERIAL + FINISHES LEGEND**

- W1 CONCRETE - LAZUR FINISH
- W2 ALUMINIUM METAL CLADDING
- W3 MODULAR TERRACOTTA FACADE SCREEN
- W4 ALUMINIUM LOUVRE SYSTEM
- W5 ZINC CLADDING
- W6 STONE CLADDING
- W7 ALUMINIUM LIGHT SHELF
- W8 VERTICAL TERRACOTTA BLADE SCREEN
- W9 OPERABLE TIMBER BATTEN SCREEN SYSTEM
- G1 FRAMELESS GLAZING
- G2 ALUMINIUM FRAMED GLAZING SUITE
- G3 ALUMINIUM FRAMED GLAZING SUITE WITH EXTERNAL RETRACTABLE BLIND SYSTEM
- B1 FRAMELESS GLASS BALUSTRADE

**KEY PLAN**



1 West Elevation  
 Scale: 1 : 200

**architectus™**

Architectus Sydney  
 Level 3 341 George Street  
 Sydney NSW 2000  
 T (61 2) 8222 8400  
 F (61 2) 8222 8800  
 sydney@architectus.com.au  
 ABN 11 098 489 448

project  
 33 CROSS STREET, DOUBLE BAY

drawing  
 WEST ELEVATION

scale at A1 1:200 @ A1 drawing no.  
 drawn AD/TF/III/DR DA03-04  
 checked CO issue  
 project no 070068 B