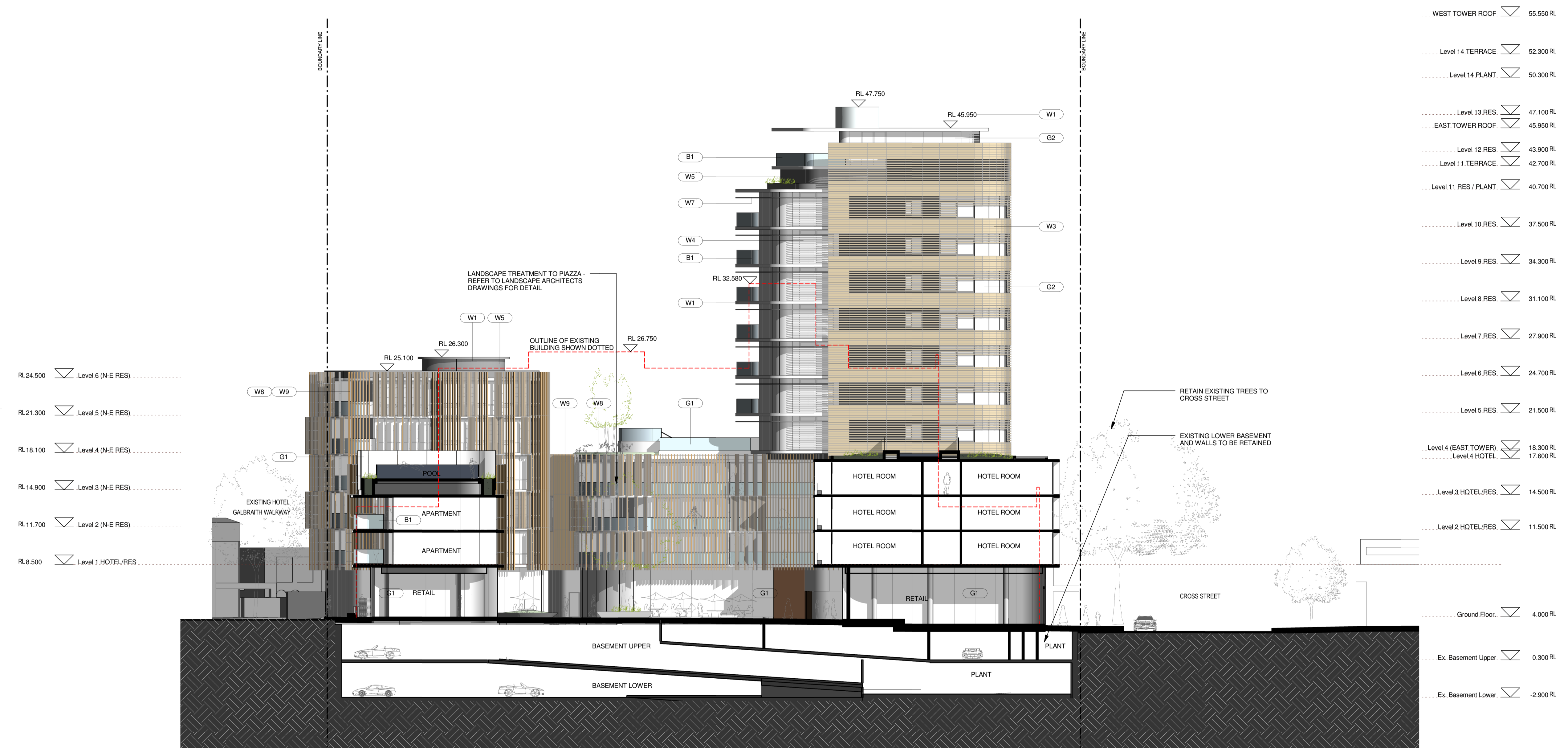


Do not scale drawings. Verify all dimensions on site

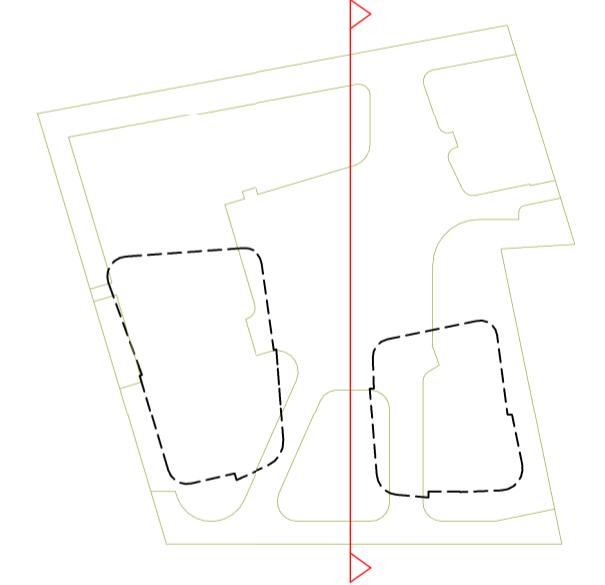
issue	amendment	date
A	PRELIMINARY ISSUE FOR INFORMATION	09.12.08
B	ISSUE FOR QA REVIEW	02.02.09
C	ISSUE FOR INFORMATION	10.02.09
D	ISSUE FOR ENVIRONMENTAL ASSESSMENT	20.02.09
E	ISSUE FOR INFORMATION	12.08.09
F	ISSUE FOR PREFERRED PROJECT REPORT	21.08.09



MATERIAL + FINISHES LEGEND

- (W1) CONCRETE - LAZUR FINISH
- (W2) ALUMINIUM METAL CLADDING
- (W3) MODULAR TERRACOTTA FACADE SCREEN
- (W4) ALUMINIUM LOUVRE SYSTEM
- (W5) ZINC CLADDING
- (W6) STONE CLADDING
- (W7) ALUMINIUM LIGHT SHELF
- (W8) VERTICAL TERRACOTTA BLADE SCREEN
- (W9) OPERABLE TIMBER BATTEN SCREEN SYSTEM
- (G1) FRAMELESS GLAZING
- (G2) ALUMINIUM FRAMED GLAZING SUITE
- (G3) ALUMINIUM FRAMED GLAZING SUITE WITH EXTERNAL RETRACTABLE BLIND SYSTEM
- (B1) FRAMELESS GLASS BALUSTRADE

KEY PLAN



3 Section A-A
 Scale: 1 : 200

architectus™

Architectus Sydney
 Level 3 341 George Street
 Sydney NSW 2000
 T (61 2) 8222 8400
 F (61 2) 8222 8600
 sydney@architectus.com.au
 ABN 11 098 489 448

project
33 CROSS STREET, DOUBLE BAY

drawing
SECTION A-A

scale at A1 **1:200 @ A1** drawing no.
 drawn **AD/TF/III/DR** **DA03-11**
 checked **CO** issue
 project no **070068** **F**