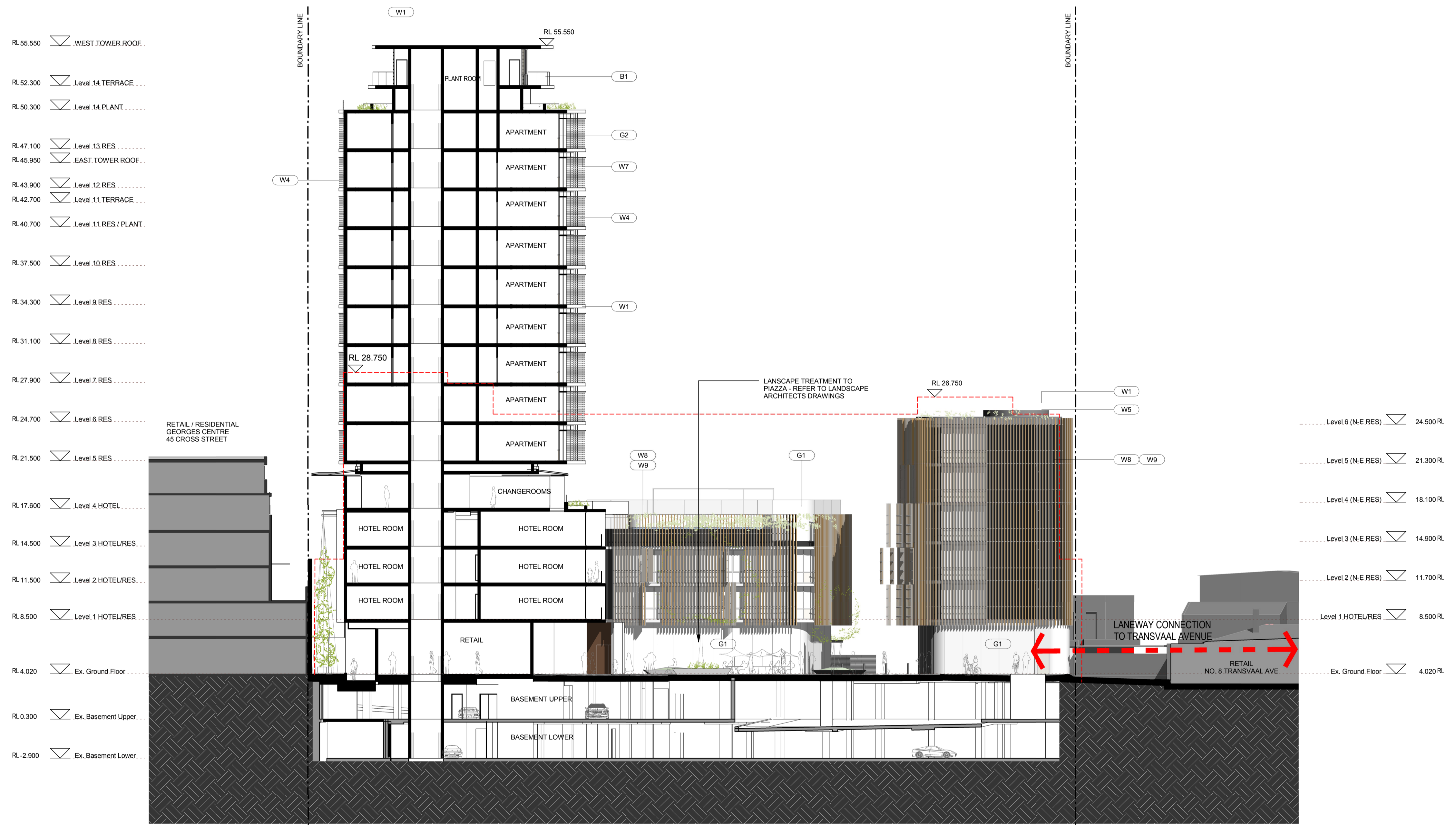


Do not scale drawings. Verify all dimensions on site

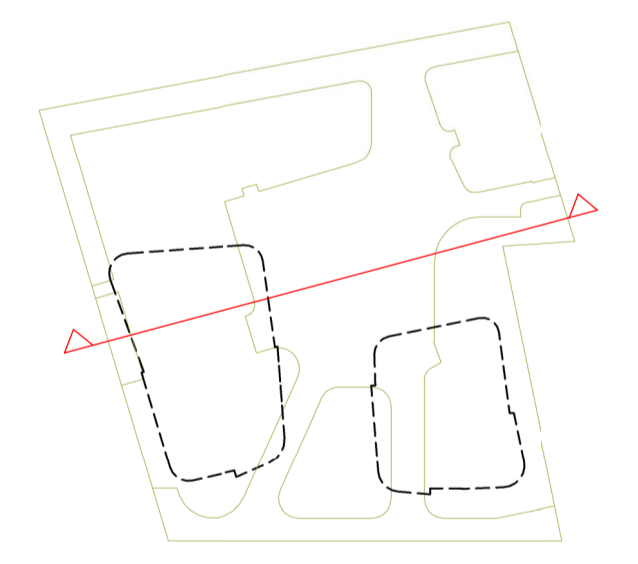
issue	amendment	date
A	PRELIMINARY ISSUE FOR INFORMATION	09.12.08
B	ISSUE FOR CA REVIEW	02.02.09
C	ISSUE FOR INFORMATION	10.02.09
D	ISSUE FOR ENVIRONMENTAL ASSESSMENT	20.02.09
E	ISSUE FOR INFORMATION	12.08.09
F	ISSUE FOR PREFERRED PROJECT REPORT	21.08.09



**MATERIAL + FINISHES LEGEND**

- (W1) CONCRETE - LAZUR FINISH
- (W2) ALUMINIUM METAL CLADDING
- (W3) MODULAR TERRACOTTA FACADE SCREEN
- (W4) ALUMINIUM LOUVRE SYSTEM
- (W5) ZINC CLADDING
- (W6) STONE CLADDING
- (W7) ALUMINIUM LIGHT SHELF
- (W8) VERTICAL TERRACOTTA BLADE SCREEN
- (W9) OPERABLE TIMBER BATTEN SCREEN SYSTEM
- (G1) FRAMELESS GLAZING
- (G2) ALUMINIUM FRAMED GLAZING SUITE
- (G3) ALUMINIUM FRAMED GLAZING SUITE WITH EXTERNAL RETRACTABLE BLIND SYSTEM
- (B1) FRAMELESS GLASS BALUSTRADE

**KEY PLAN**



**B** Section B-B  
 SK0060 Scale: 1 : 200

**architectus™**

**Architectus Sydney**  
 Level 3 341 George Street  
 Sydney NSW 2000  
 T (61 2) 8252 8400  
 F (61 2) 8252 8600  
 sydney@architectus.com.au  
 ABN 11 088 489 448

**Sydney**  
 Melbourne  
 Auckland  
 Brisbane  
 Shanghai

project  
**33 CROSS STREET, DOUBLE BAY**

drawing  
**SECTION B-B**

scale at A1 **1:200 @ A1** drawing no.  
 drawn **AD/TF/III/DR** **DA03-12**  
 checked **CO** issue  
 project no **070068** **F**