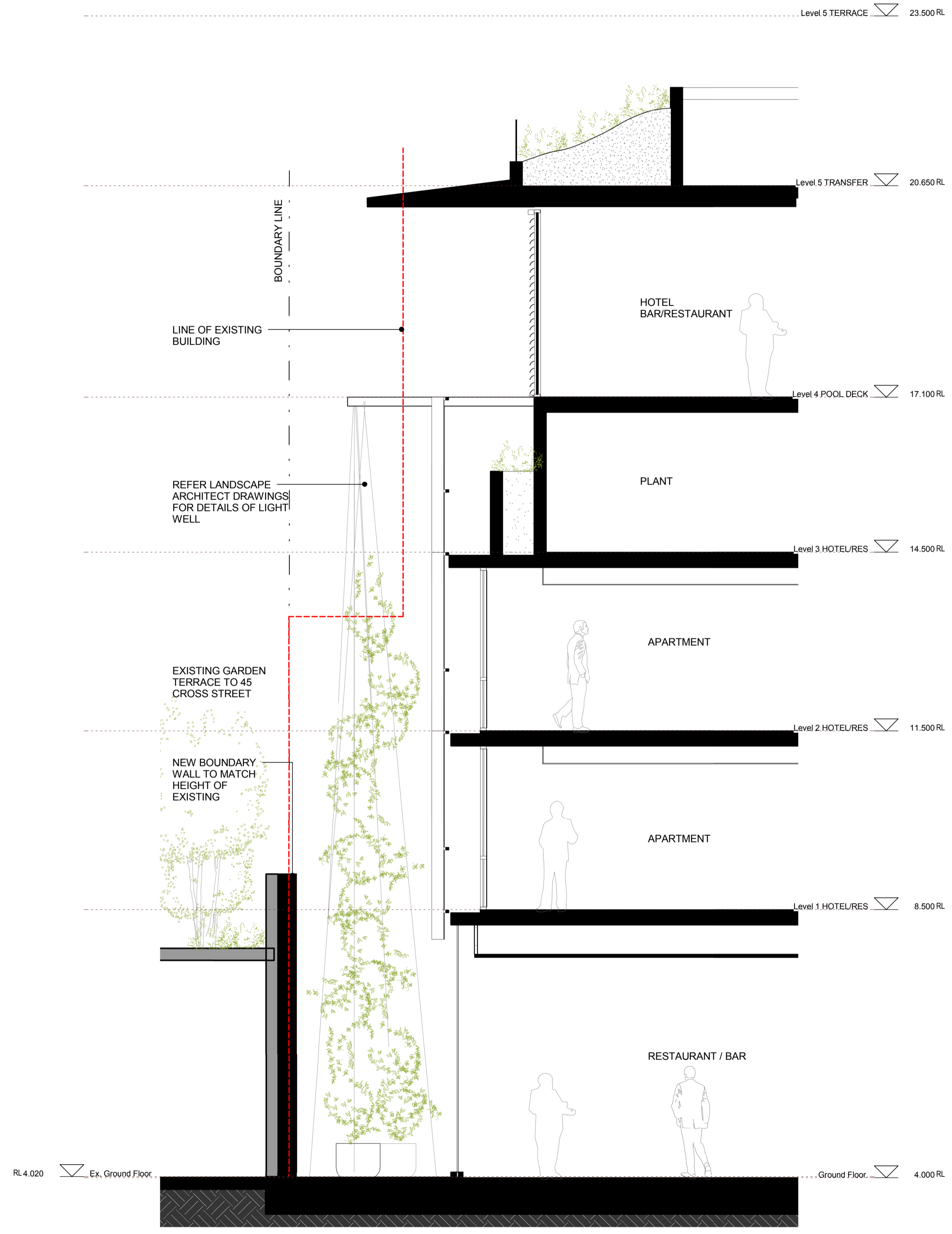
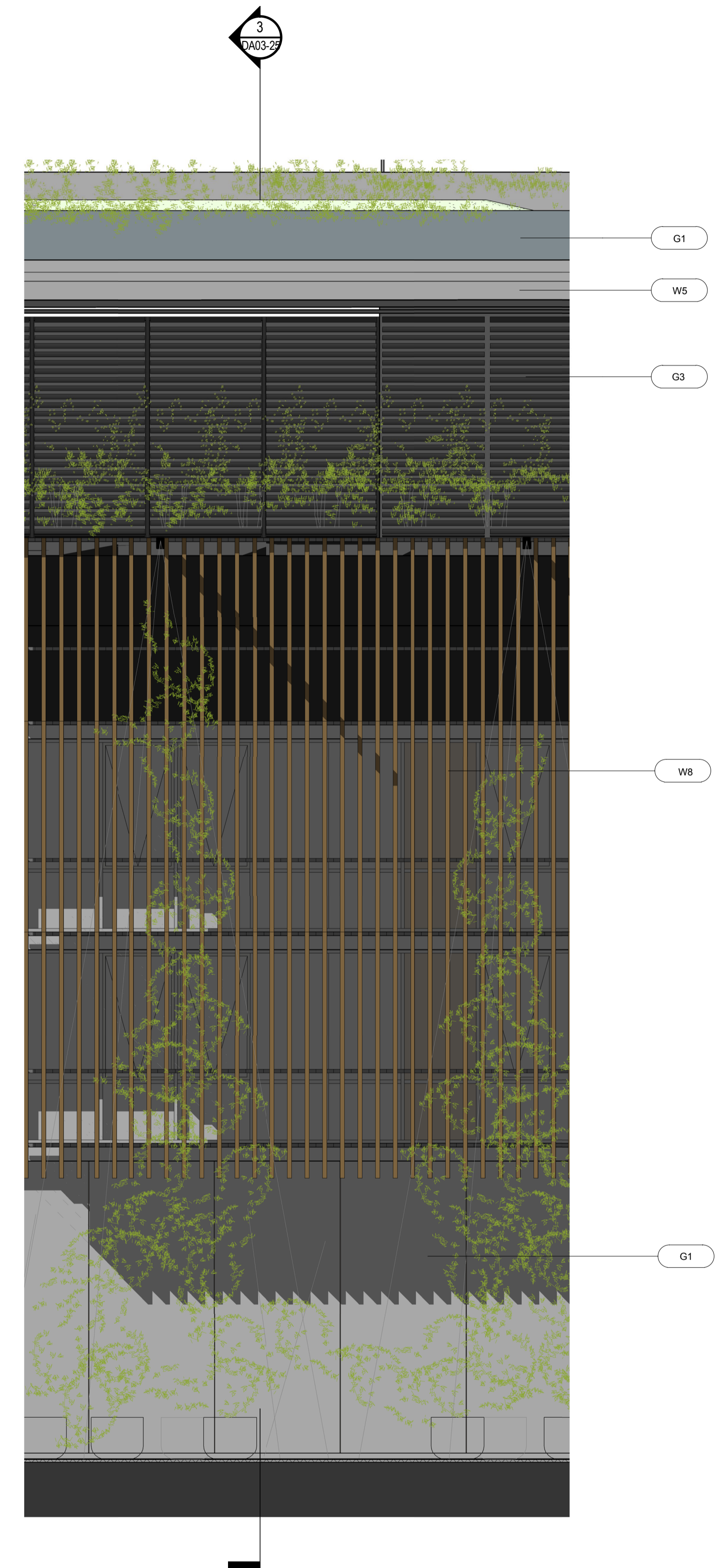


Do not scale drawings. Verify all dimensions on site

issue	amendment	date
-	ISSUE FOR QA REVIEW	02.02.09
A	ISSUE FOR ENVIRONMENTAL ASSESSMENT	20.02.09
B	ISSUE FOR PREFERRED PROJECT REPORT	21.08.09



3 SECTION DETAIL 5-5
 Scale: 1 : 50

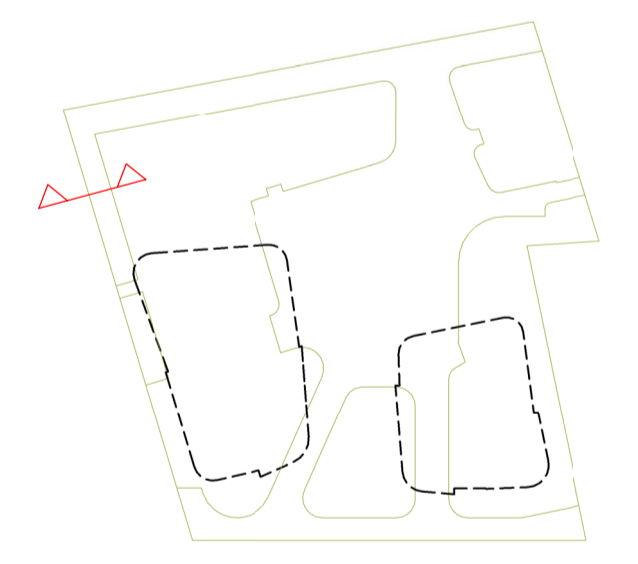


2 ELEVATION DETAIL 5-5
 Scale: 1 : 50

MATERIAL + FINISHES LEGEND

- (W1) CONCRETE - LAZUR FINISH
- (W2) ALUMINIUM METAL CLADDING
- (W3) MODULAR TERRACOTTA FACADE SCREEN
- (W4) ALUMINIUM LOUVRE SYSTEM
- (W5) ZINC CLADDING
- (W6) STONE CLADDING
- (W7) ALUMINIUM LIGHT SHELF
- (W8) VERTICAL TERRACOTTA BLADE SCREEN
- (W9) OPERABLE TIMBER BATTEN SCREEN SYSTEM
- (G1) FRAMELESS GLAZING
- (G2) ALUMINIUM FRAMED GLAZING SUITE
- (G3) ALUMINIUM FRAMED GLAZING SUITE WITH EXTERNAL RETRACTABLE BLIND SYSTEM
- (B1) FRAMELESS GLASS BALUSTRADE

KEY PLAN



architectus™

Architectus Sydney
 Level 3 341 George Street
 Sydney NSW 2000
 T (61 2) 8322 8400
 F (61 2) 8322 8600
 sydney@architectus.com.au
 ABN 11 086 489 448

Sydney
 Melbourne
 Auckland
 Brisbane
 Shanghai

project
 33 CROSS STREET, DOUBLE BAY

drawing
 DETAIL SECTION 5-5

scale at A1	1:50 @ A1	drawing no.
drawn	III/AD	DA03-25
checked	CO	issue
project no	070068	B