

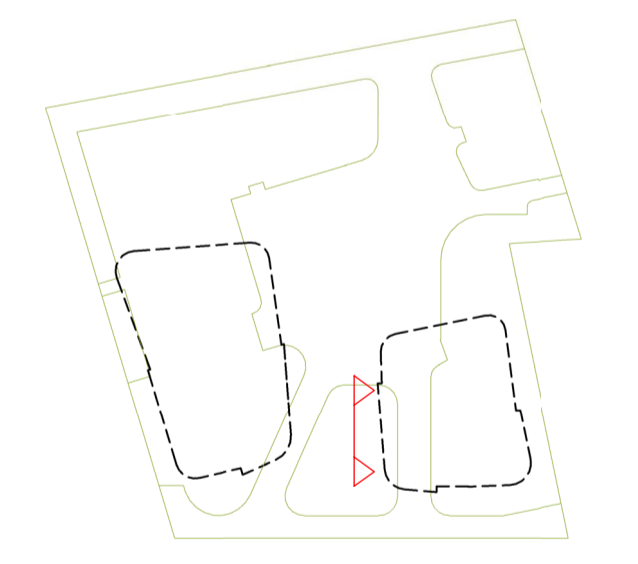
Do not scale drawings. Verify all dimensions on site

issue	amendment	date
-	ISSUE FOR QA REVIEW	02.02.09
A	ISSUE FOR ENVIRONMENTAL ASSESSMENT	20.02.09
B	ISSUE FOR PREFERRED PROJECT REPORT	21.08.09

**MATERIAL + FINISHES LEGEND**

- (W1) CONCRETE - LAZUR FINISH
- (W2) ALUMINIUM METAL CLADDING
- (W3) MODULAR TERRACOTTA FACADE SCREEN
- (W4) ALUMINIUM LOUVRE SYSTEM
- (W5) ZINC CLADDING
- (W6) STONE CLADDING
- (W7) ALUMINIUM LIGHT SHELF
- (W8) VERTICAL TERRACOTTA BLADE SCREEN
- (W9) OPERABLE TIMBER BATTEN SCREEN SYSTEM
- (G1) FRAMELESS GLAZING
- (G2) ALUMINIUM FRAMED GLAZING SUITE
- (G3) ALUMINIUM FRAMED GLAZING SUITE WITH EXTERNAL RETRACTABLE BLIND SYSTEM
- (B1) FRAMELESS GLASS BALUSTRADE

**KEY PLAN**



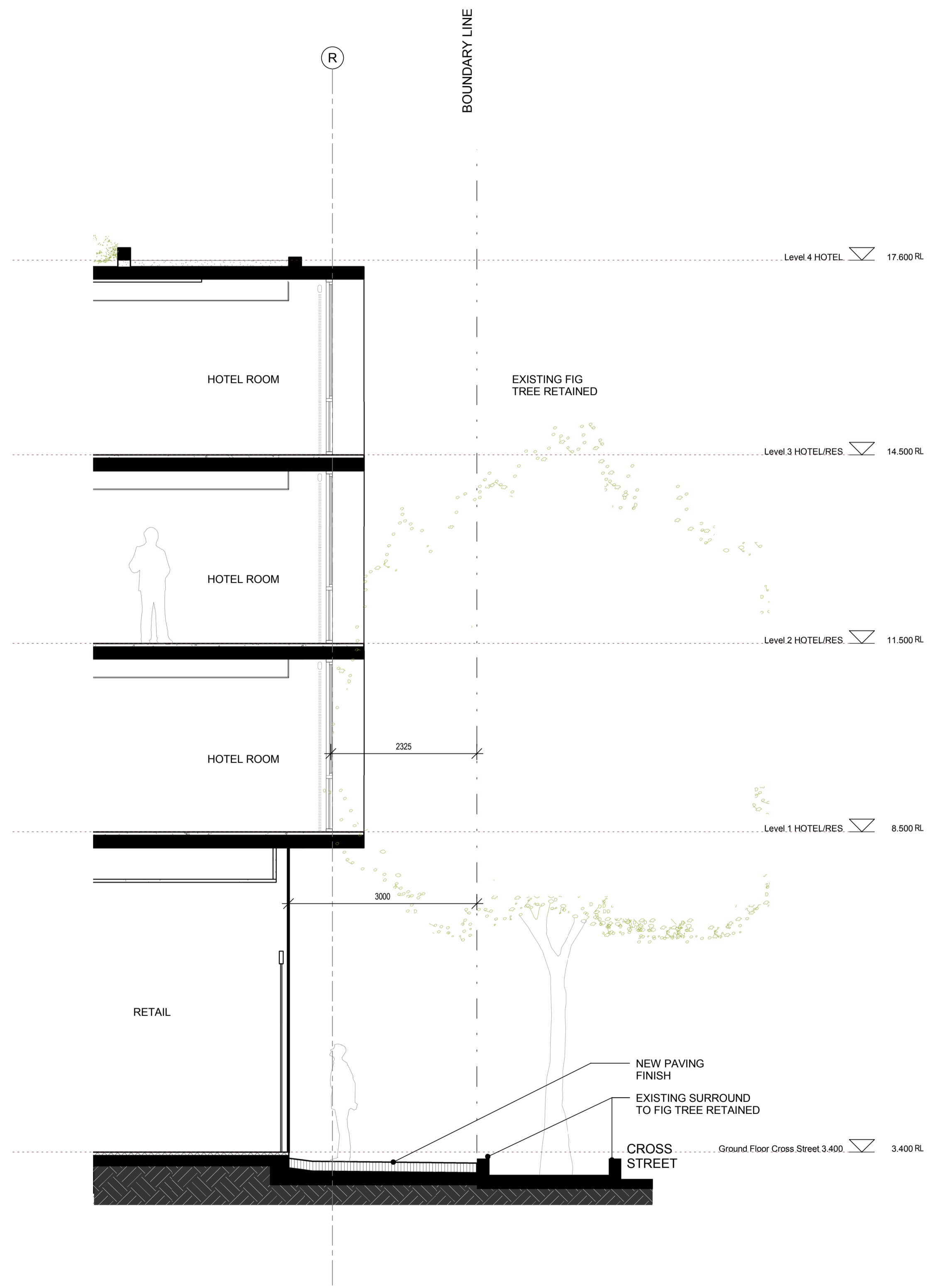
**architectus™**

**Architectus Sydney**  
 Level 3 341 George Street  
 Sydney NSW 2000  
 T (61 2) 8252 8400  
 F (61 2) 8252 8600  
 sydney@architectus.com.au  
 ABN 11 088 489 448

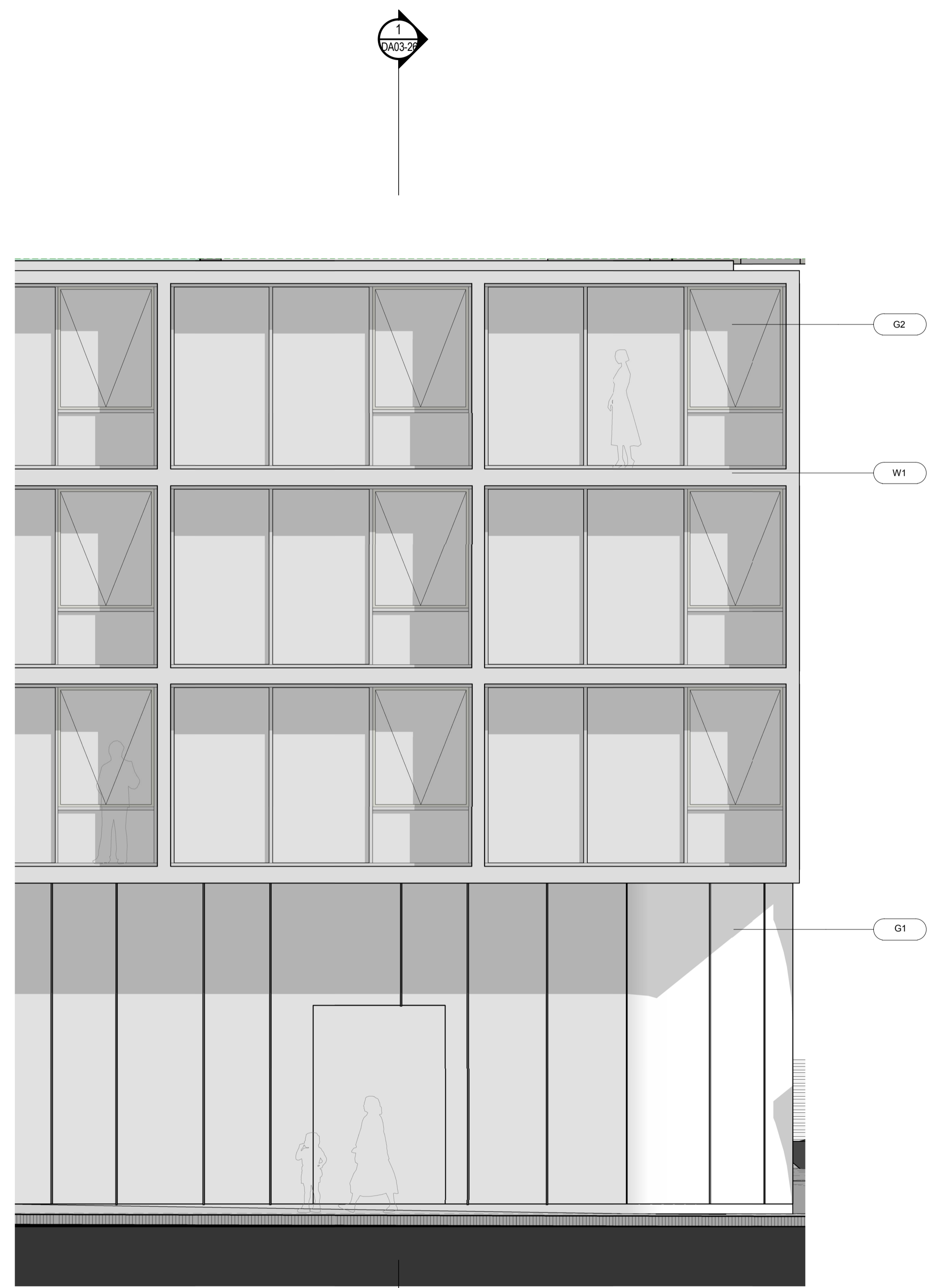
project  
**33 CROSS STREET, DOUBLE BAY**

drawing  
**DETAIL SECTION 6-6**

scale at A1	1:50 @ A1	drawing no.
drawn	IIP/AD	<b>DA03-26</b>
checked	CO	issue
project no	070068	<b>B</b>



**1 SECTION DETAIL 6-6**  
 Scale: 1 : 50



**2 ELEVATION DETAIL 6-6**  
 Scale: 1 : 50