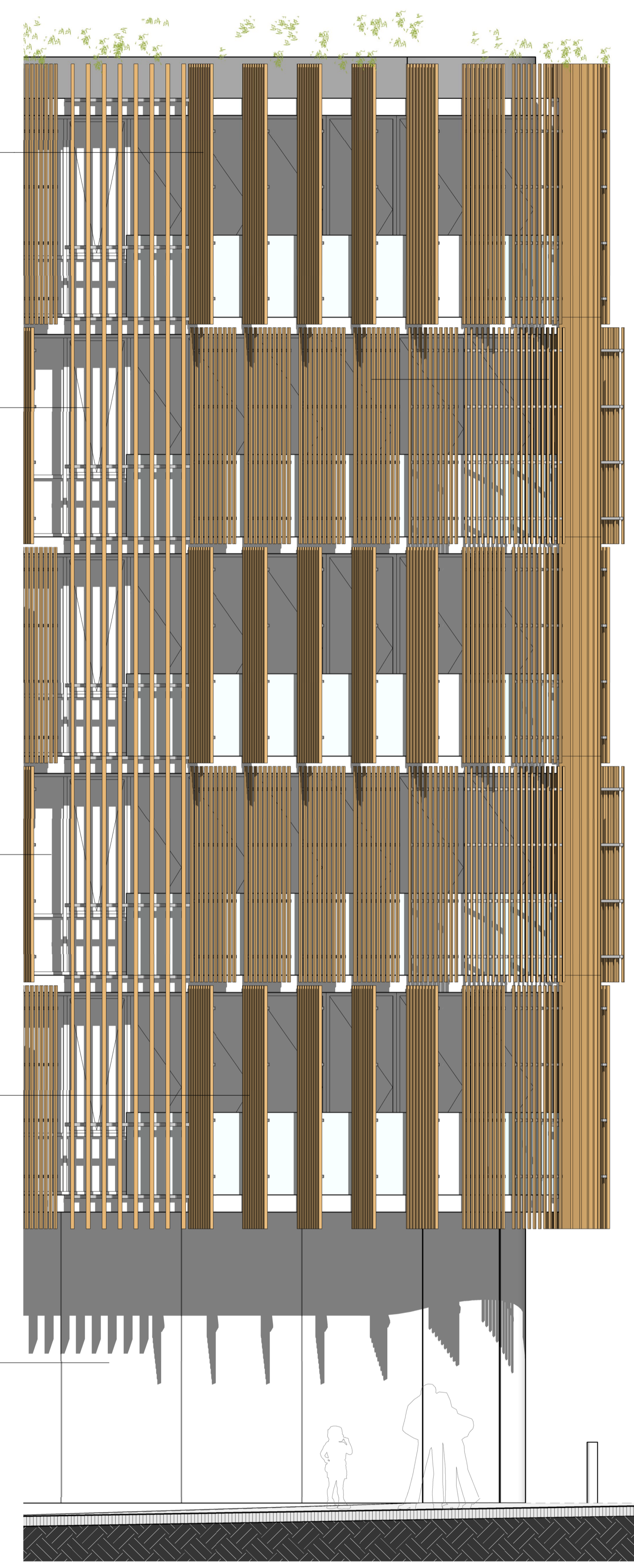
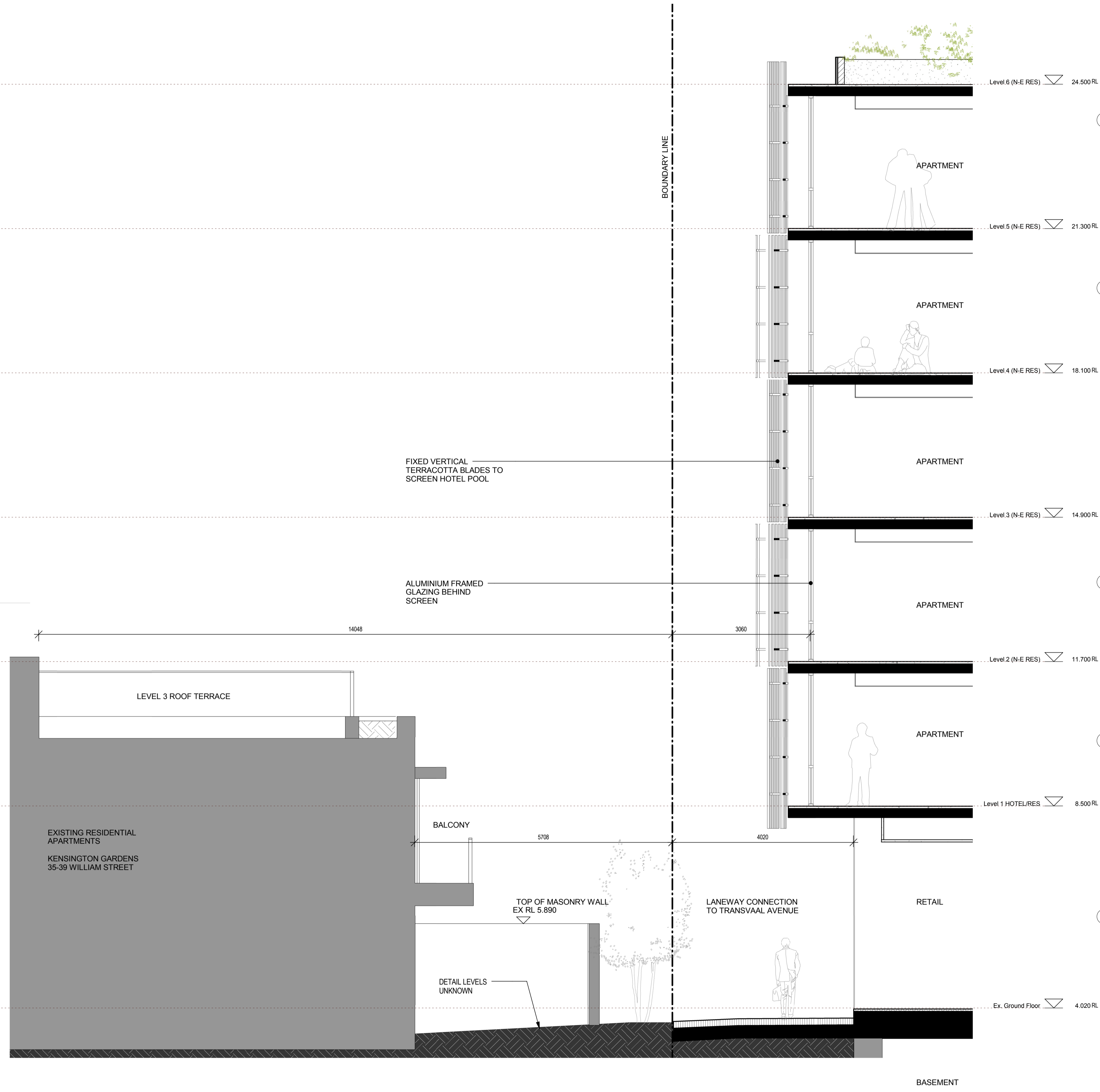


Do not scale drawings. Verify all dimensions on site

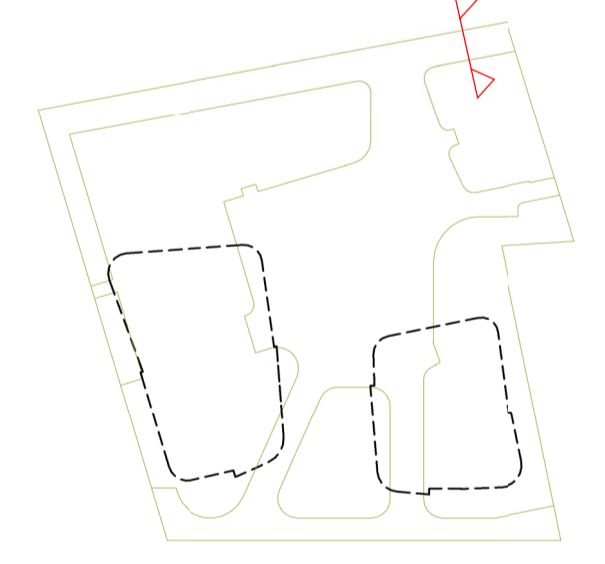
issue	amendment	date
-	ISSUE FOR QA REVIEW	02.02.09
A	ISSUE FOR ENVIRONMENTAL ASSESSMENT	20.02.09
B	ISSUE FOR PREFERRED PROJECT REPORT	21.08.09



MATERIAL + FINISHES LEGEND

- W1 CONCRETE - LAZUR FINISH
- W2 ALUMINIUM METAL CLADDING
- W3 MODULAR TERRACOTTA FACADE SCREEN
- W4 ALUMINIUM LOUVRE SYSTEM
- W5 ZINC CLADDING
- W6 STONE CLADDING
- W7 ALUMINIUM LIGHT SHELF
- W8 VERTICAL TERRACOTTA BLADE SCREEN
- W9 OPERABLE TIMBER BATTEN SCREEN SYSTEM
- G1 FRAMELESS GLAZING
- G2 ALUMINIUM FRAMED GLAZING SUITE
- G3 ALUMINIUM FRAMED GLAZING SUITE WITH EXTERNAL RETRACTABLE BLIND SYSTEM
- B1 FRAMELESS GLASS BALUSTRADE

KEY PLAN



architectus™

Architectus Sydney
 Level 3 341 George Street
 Sydney NSW 2000
 T (61 2) 8252 8400
 F (61 2) 8252 8600
 sydney@architectus.com.au
 ABN 11 088 489 448

project
33 CROSS STREET, DOUBLE BAY

drawing
DETAIL SECTION 7-7

1 SECTION DETAIL 7-7
 Scale: 1 : 50

2 ELEVATION DETAIL 7-7
 Scale: 1 : 50

scale at A1	1:50 @ A1	drawing no.
drawn	II/AD	DA03-27
checked	CO	issue
project no	070068	B