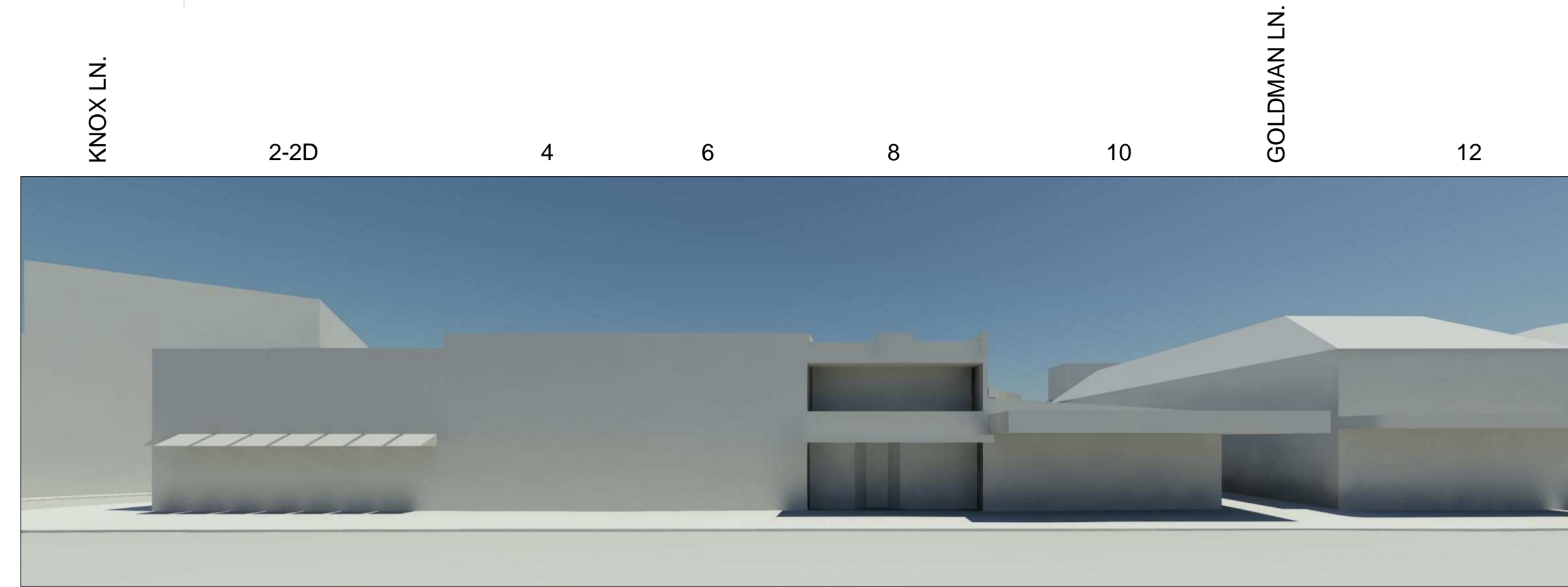
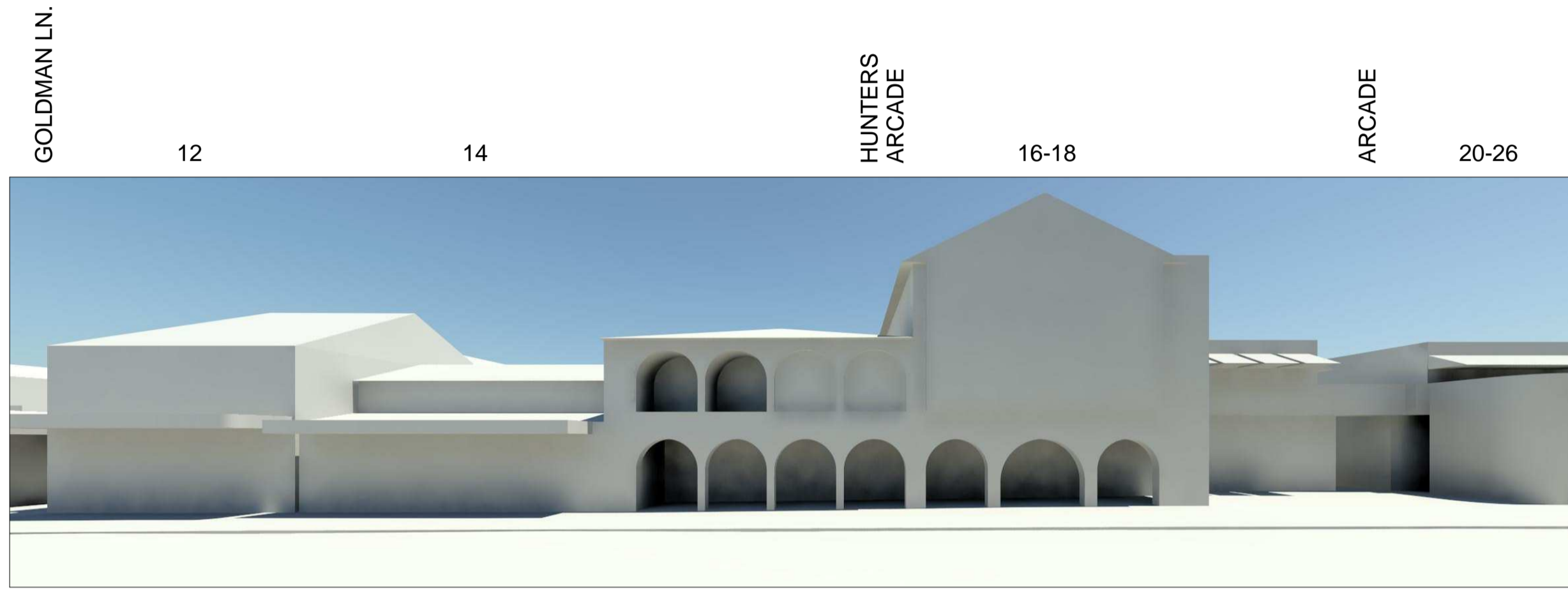


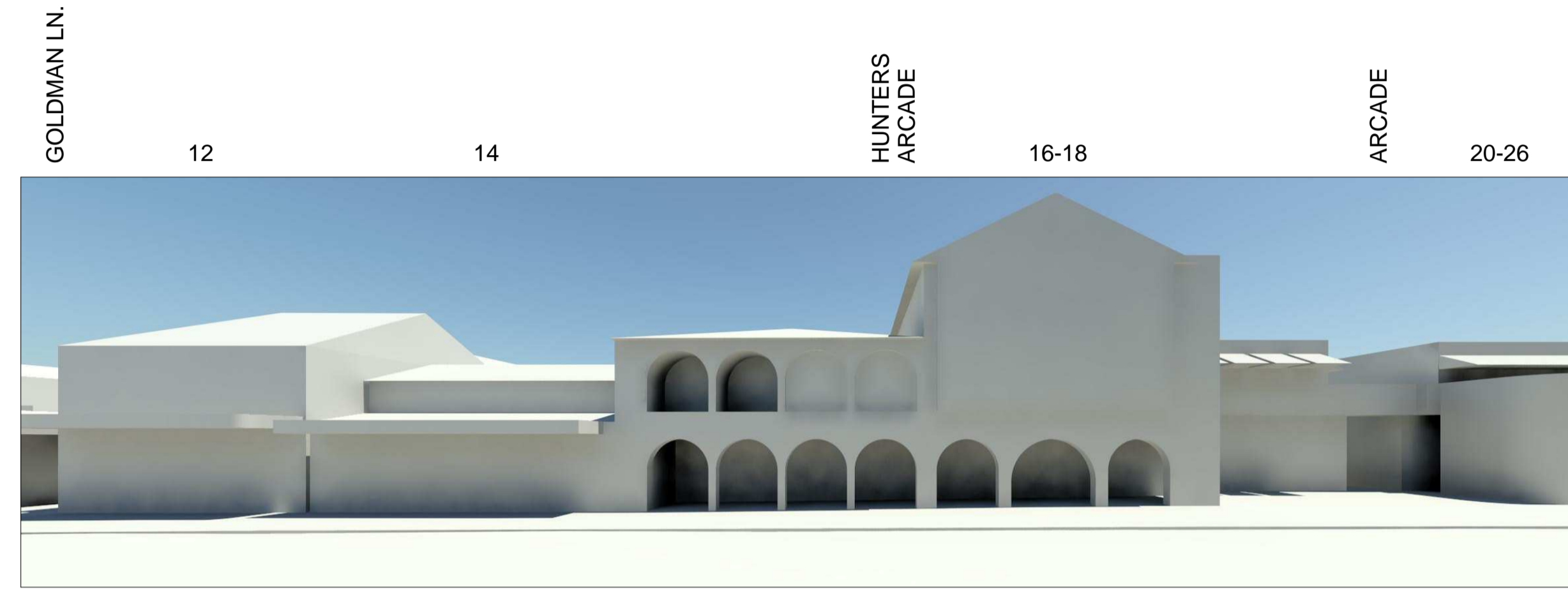
PERSPECTIVE A - 21st DECEMBER 2pm EXISTING



PERSPECTIVE A - 21st DECEMBER 2pm PROPOSED



PERSPECTIVE B - 21st DECEMBER 2pm EXISTING



PERSPECTIVE B - 21st DECEMBER 2pm PROPOSED



PERSPECTIVE C - 21st DECEMBER 2pm EXISTING



PERSPECTIVE C - 21st DECEMBER 2pm PROPOSED



PERSPECTIVE D - 21st DECEMBER 2pm EXISTING



PERSPECTIVE D - 21st DECEMBER 2pm PROPOSED

Do not scale drawings. Verify all dimensions on site

issue	amendment	date
-	ISSUE FOR PREFERRED PROJECT REPORT	21.08.09