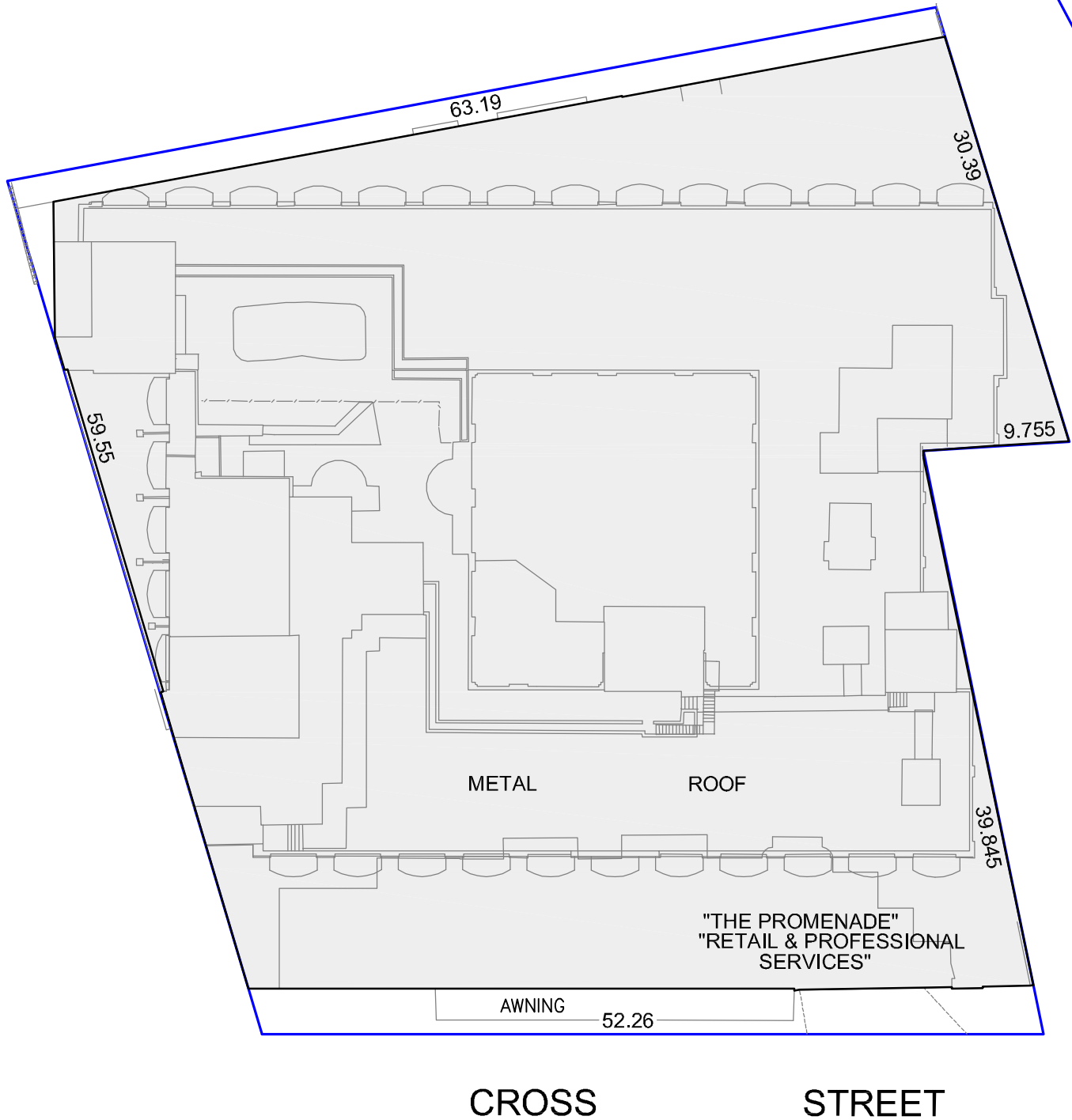


GROSS FLOOR AREA
 STAMFORD PLAZA
 No33 CROSS STREET, DOUBLE BAY
 FIRST FLOOR (AND MEZZANINE)



GFA AREAS THIS LEVEL SHOWN SHADED

SHEET 7 OF 10
 FILE REF: 18271
 DWG REF: 20370—FIRST
 DATE : 14 JULY 2009

© PROJECT SURVEYORS-2009
 REPRODUCTION WITHOUT WRITTEN
 APPROVAL IS STRICTLY PROHIBITED



Liability Limited by a Scheme
 Approved under Professional
 Standards Legislation

MACQUARIE PARK

PO Box 4004
 MACQUARIE CENTRE NSW 2113
 SUITE 404, LEVEL 4
 No13-15 LYON PARK ROAD,
 MACQUARIE PARK NSW 2113

PHONE : 9888 3848
 FAX : 9888 3875
 email: office@projectsurveyors.com.au
 www.projectsurveyors.com.au
 ABN 20 068 433 974



**PROJECT
 SURVEYORS**

Professional Innovative... Results.