

Appendix 15

General Arrangement Plan for Bridge over Buttonderry Creek

Trehy Ingold Neate

Drawing EC01A



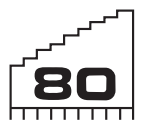
Warner Industrial Park Preferred Project Report Concept Plan and Project Application

Precinct 14 WEZ

Sparks Rd and Hue Hue Rd

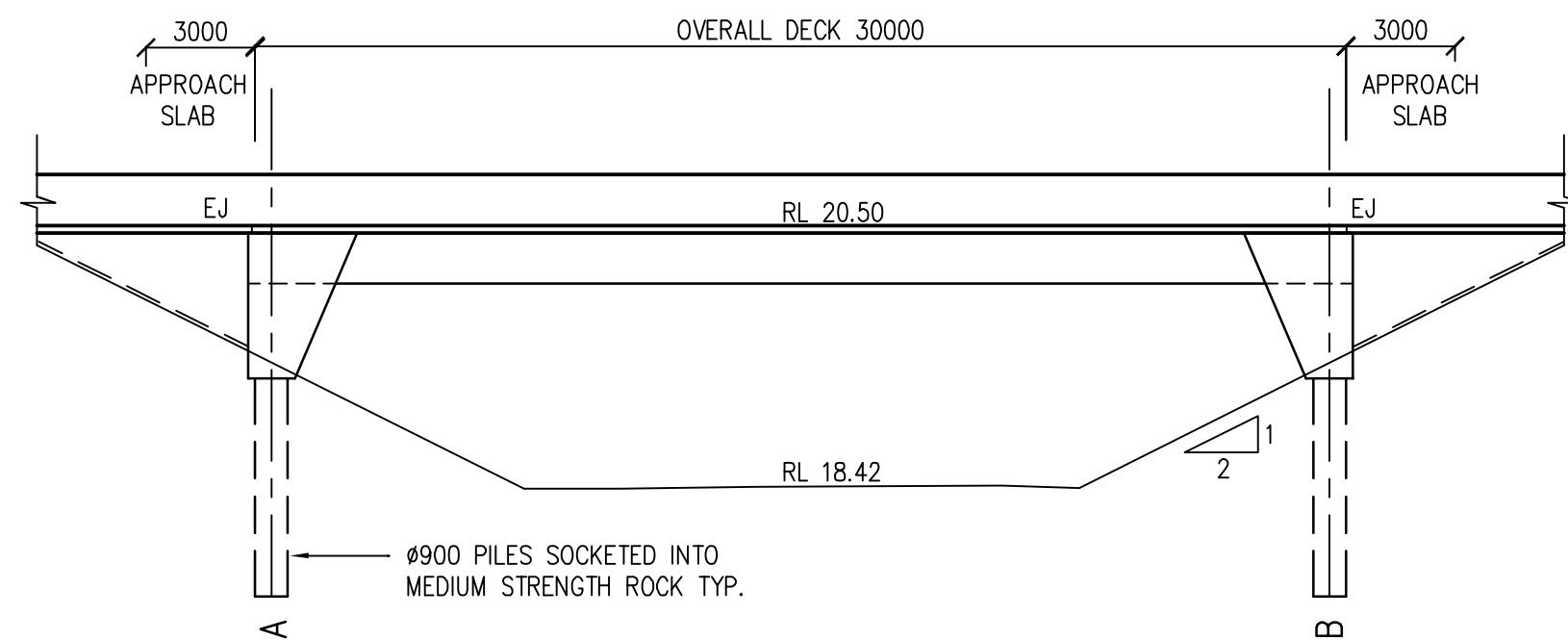
Warnervale

May 2009



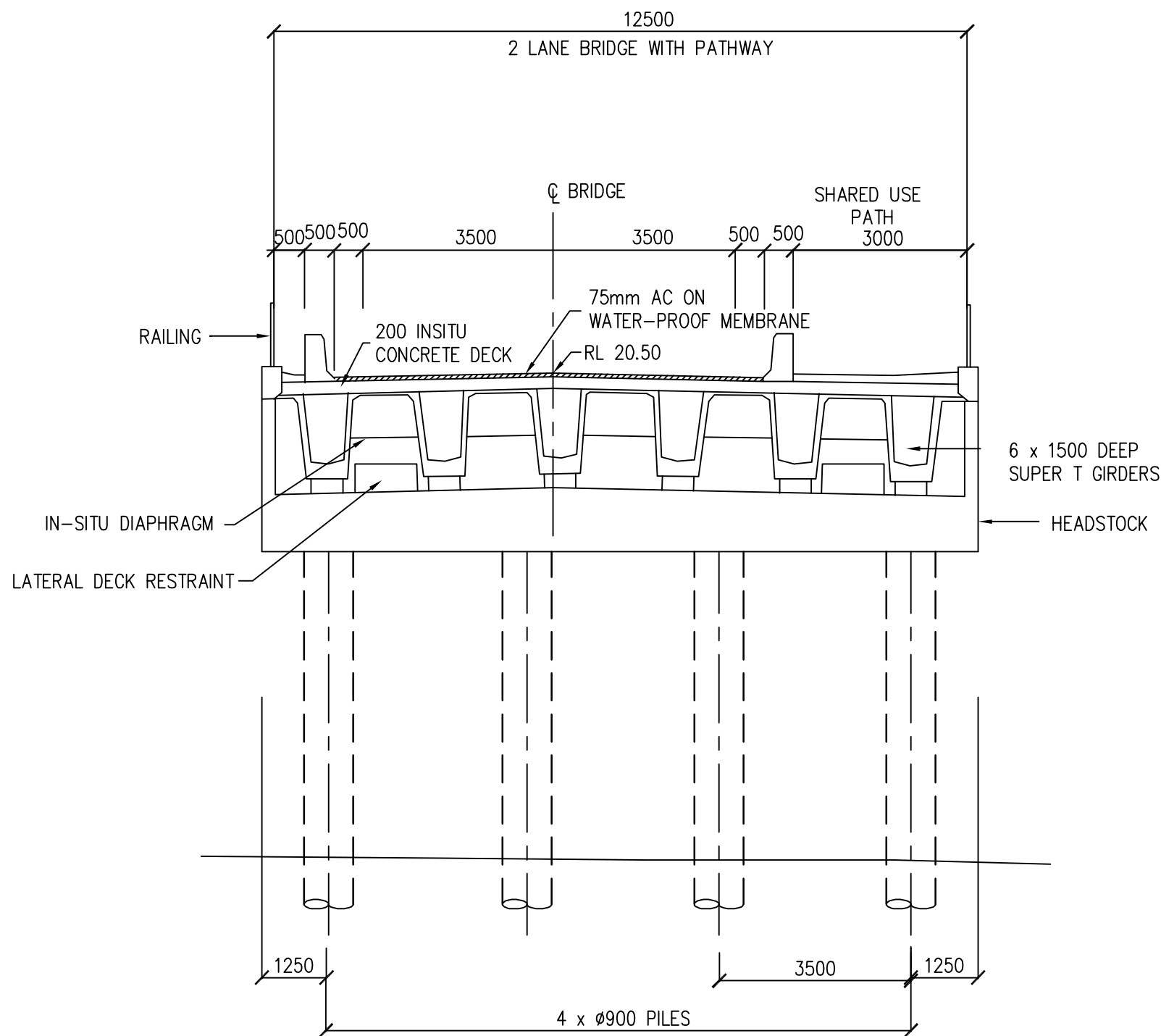
**TERRACE
TOWER
GROUP**

Warner Business Park Pty Ltd
Part of the Terrace Tower Group

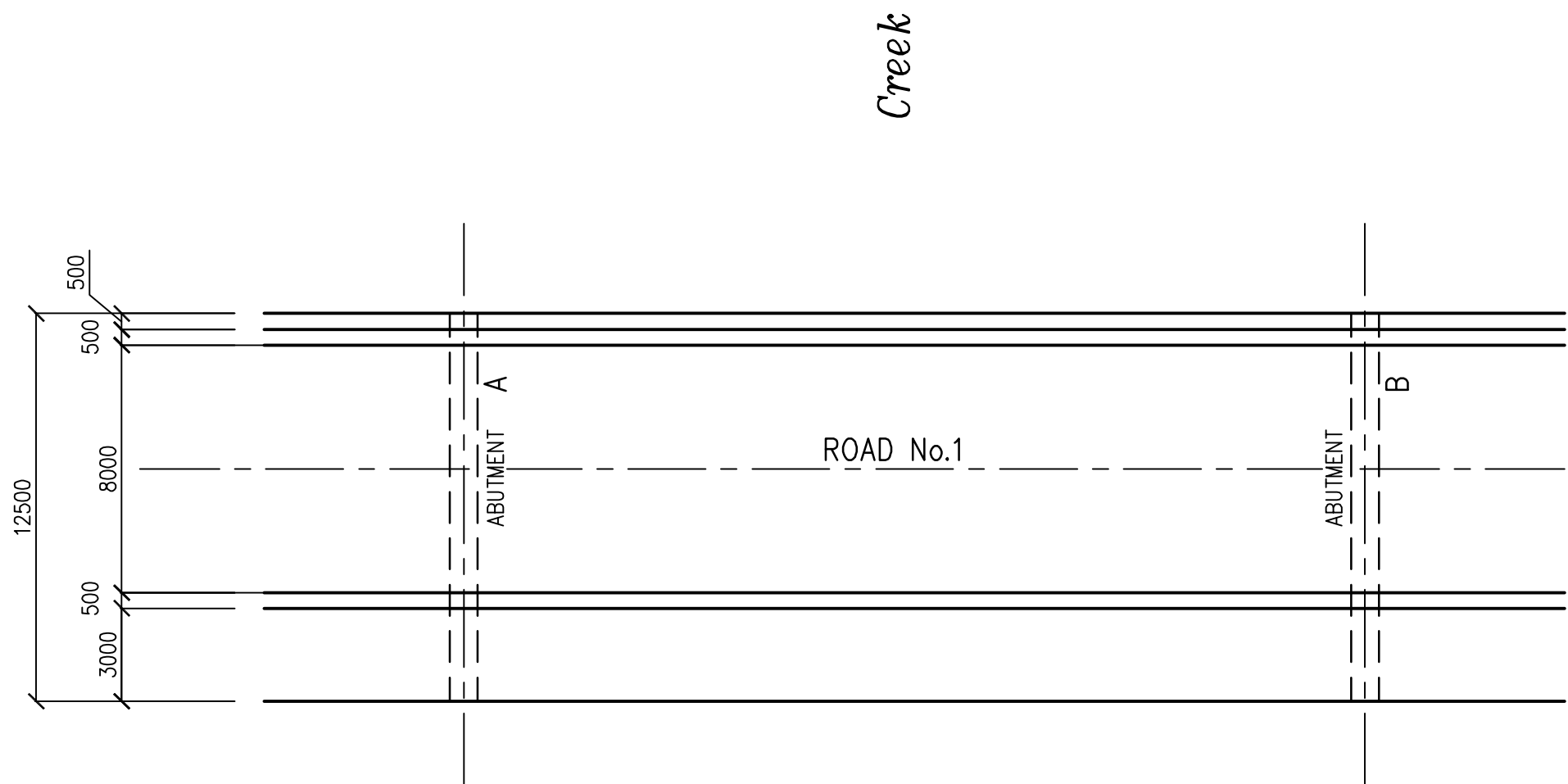


ELEVATION
1:200

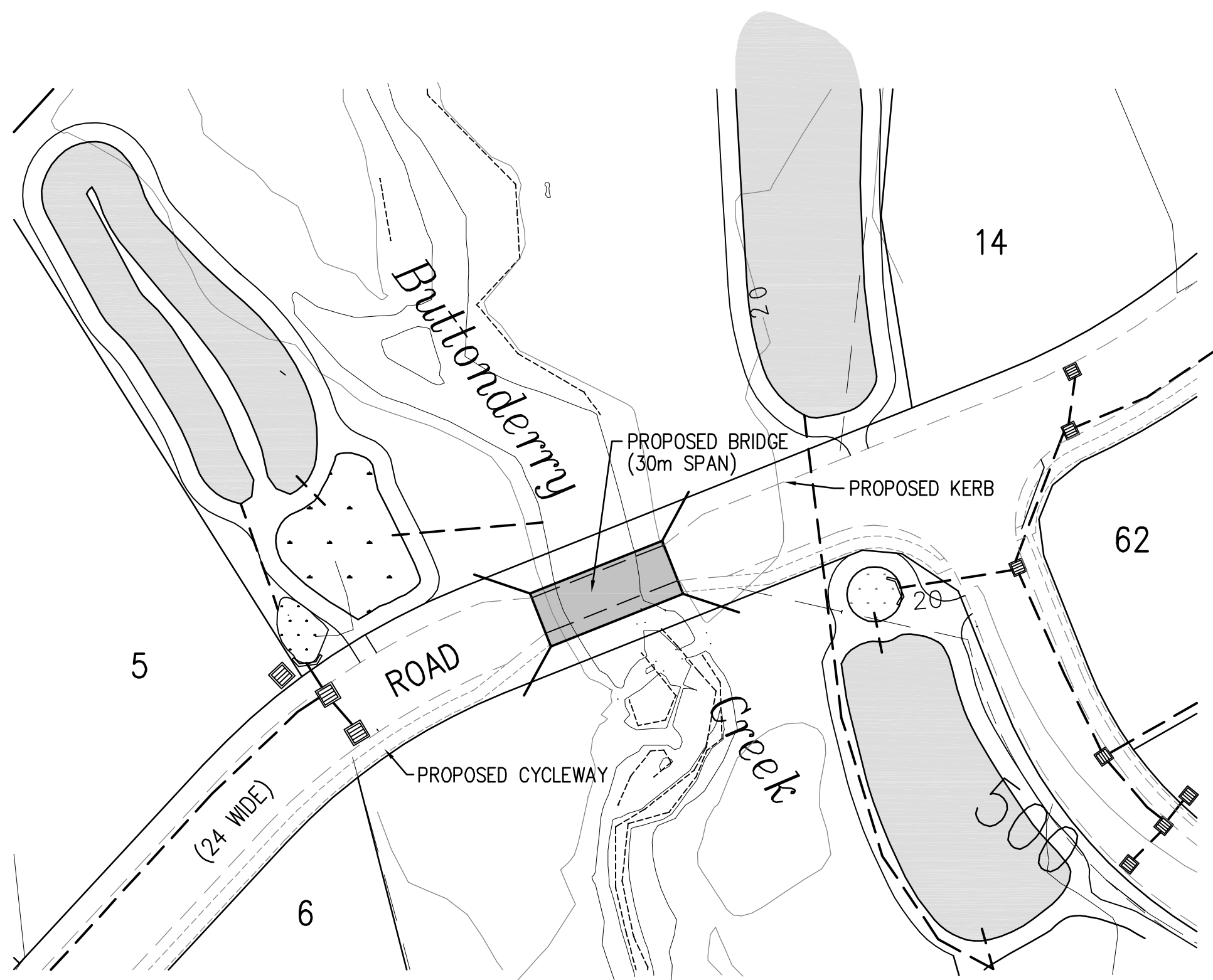
- NOTES:
1. PRELIMINARY DESIGN DEVELOPED TO THE REQUIREMENTS OF AS 5100.
 2. UNLESS NOTED OTHERWISE: ALL DIMENSIONS ARE GIVEN IN MILLIMETRES ALL CHAINAGES ARE GIVEN IN METRES ALL LEVELS ARE GIVEN TO AUSTRALIAN HEIGHT DATUM (AHD)
 3. DO NOT OBTAIN DIMENSIONS BY SCALING FROM THE DRAWINGS.
 4. ABBREVIATION EJ – EXPANSION JOINT
 5. CONCEPT DESIGN BASED ON GEOTECHNICAL DESKTOP ASSESSMENT ONLY, CHANGES MAY OCCUR AS FURTHER INFORMATION BECOMES AVAILABLE.
 6. PILES TO BE FOUNDED IN MEDIUM STRENGTH ROCK.
 5. WATERWAY AREA TO BE CONFIRMED AT DETAIL DESIGN STAGE



SECTION
NOT TO SCALE



PLAN
NOT TO SCALE



SITE PLAN

A	ISSUED TO CLIENT	12.05.09
REV No.	REMARKS	DATE
	AMENDMENTS	

CLIENT:

WARNER BUSINESS PARK PTY LTD
PO BOX 109
DOUBLE BAY
NSW 1360



CNR. RELIANCE DRIVE
AND COLONY CLOSE
TUGGERAH NSW 2259
Phone: (02) 4351 2233
Fax: (02) 4352 1559
Postal: P.O. BOX 3205
TUGGERAH NSW 2259
Email: wyong@tinsurvey.com.au
www.tinsurvey.com.au

PROJECT

PLAN OF PROPOSED WORKS
ASSOCIATED WITH THE INDUSTRIAL
DEVELOPMENT OF LOT 1–9 IN
D.P. 239704, HUE HUE ROAD,
WARNERVALE

DRAWING TITLE

GENERAL ARRANGEMENT PLAN
FOR BRIDGE OVER BUTTONDERRY CK

DATE: 7.05.09	SCALE: NOT TO SCALE
SURVEY:	DATUM: AHD
DESIGN: P.B.	INSTRUCTION : 48
DRAWN: C.A.	CAD FILE: 19426ECA
CHECKED: P.B.	No. in SET: 1 of 1

ENGINEERING DESIGNER	DATE	PROJECT NUMBER 19426	DRAWING No EC01	REVISION A
----------------------	------	-------------------------	--------------------	---------------