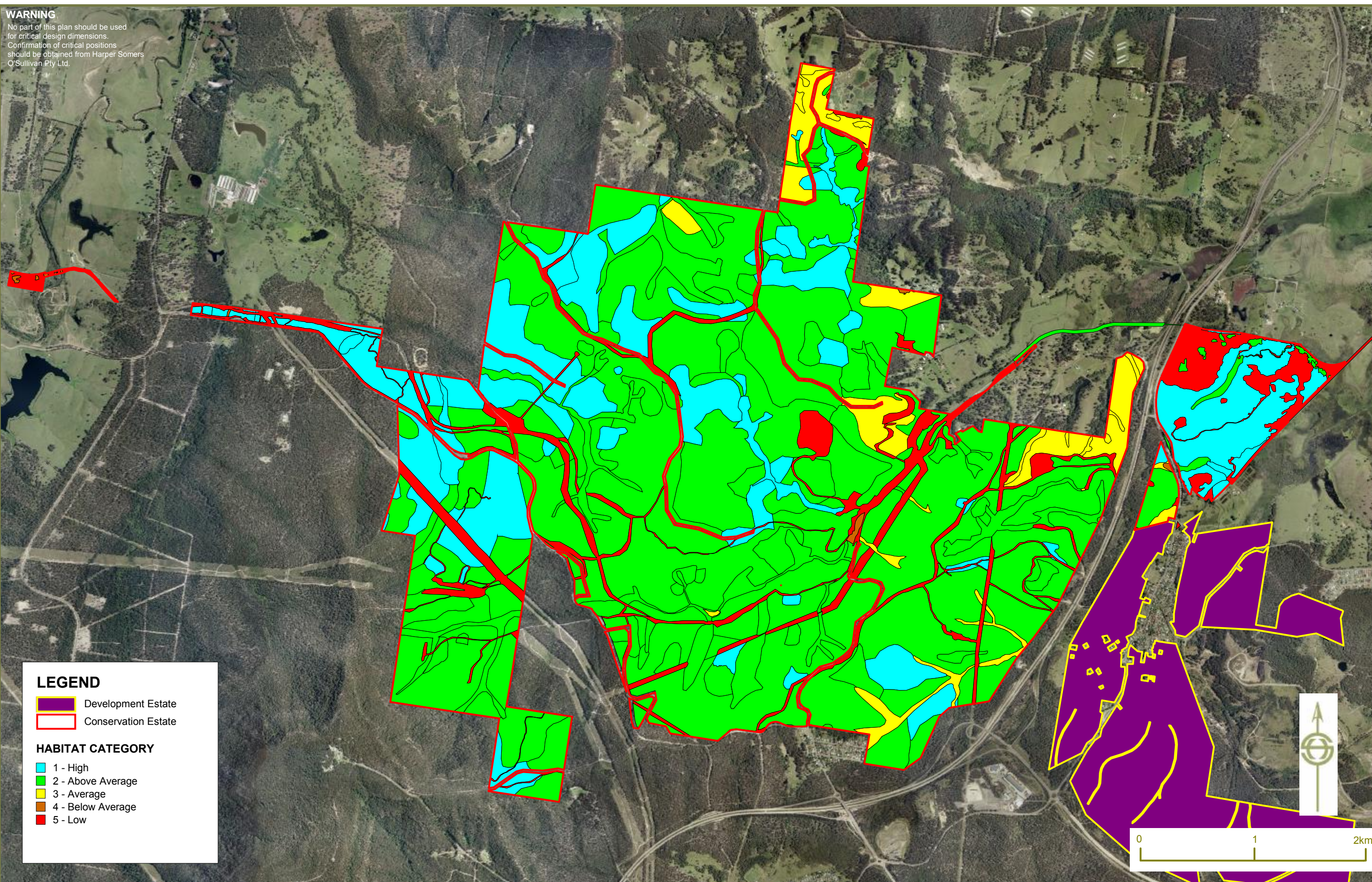


APPENDIX 3

Amended Habitat Maps

WARNING
No part of this plan should be used
for critical design dimensions.
Confirmation of critical positions
should be obtained from Harper Somers
O'Sullivan Pty Ltd.



TITLE: Figure 3-9 Habitat Condition
Conservation Estates

CLIENT: Coal & Allied
Operations Pty Ltd



PLANNING SURVEYING ECOLOGY

SCALE: 1: 32000 at A3 Size

DRAWN: A. Saddington

APPROVED: D. Landenberger

DATUM: MGA Zone 56 (GDA 94) DATE: 25/3/2008

LAYOUT REF: J:\JOBS\24k\24530 Hunter Valley\Drafting\Ecology\Northern Lands\ALL
WORKSPACES\REPORTS\Stockrington Tank\24530 FIGURE 3-6 habitat condition mapping A-A3 Pa

CONTOUR INTERVAL: N/A

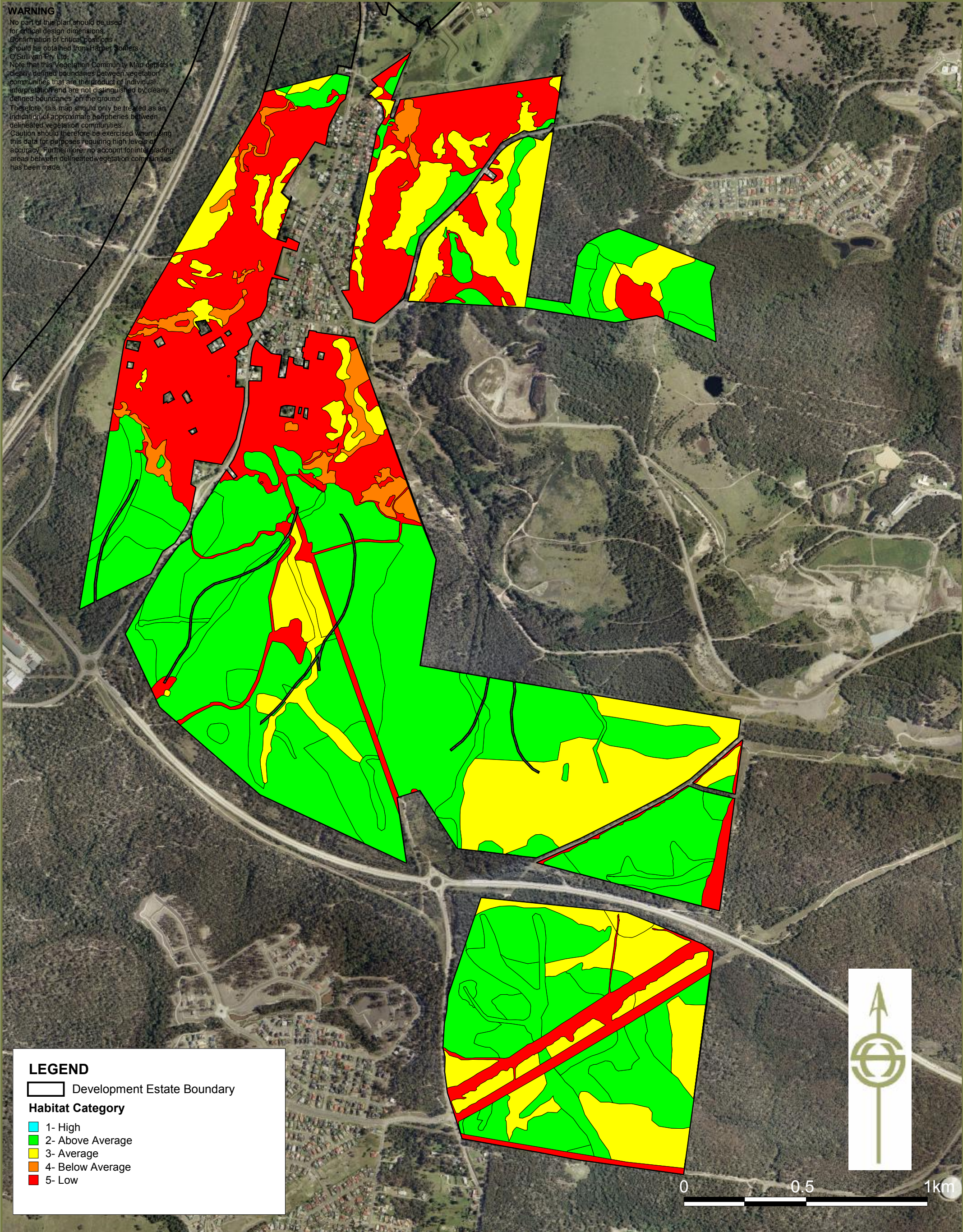
JOB REF:

24530-2

Copyright
"This document & the information shown shall remain the property of Harper
Somers O'Sullivan Pty Ltd. The document may only be used for the purpose for
which it was supplied and in accordance with the terms of engagement for the
commission. Unauthorised use of this document in any way is prohibited."

241 DENISON STREET BROADMEADOW PO BOX 428 HAMILTON NSW 2303
T: 02 4961 6500 F: 02 4961 6794 E: survey@hso.com.au W: www.hso.com.au ABN 11 093 343 858

WARNING
No part of this plan should be used for critical design dimensions. Confirmation of critical positions should be obtained from Harper Somers O'Sullivan Pty Ltd.
Note that this Vegetation Community Map depicts clearly defined boundaries between vegetation communities that are the product of individual interpretation and are not distinguished by clearly defined boundaries on the ground. Therefore, this map should only be treated as an indication of approximate peripheries between delineated vegetation communities. Caution should therefore be exercised when using this data for purposes requiring high levels of accuracy. Furthermore, no account for intergrading areas between delineated vegetation communities has been made.



LEGEND

Development Estate Boundary

Habitat Category

- 1- High
- 2- Above Average
- 3- Average
- 4- Below Average
- 5- Low

TITLE: Figure 4-9 Habitat Condition Mapping