



AUBURN 01

17-21 PARRAMATTA ROAD
LIDCOMBE NSW, AUSTRALIA

**COSTCO
WHOLESALE
CORPORATION**

999 LAKE DRIVE
ISSAQUAH, WA 98027
T: 425.313.8100
Costco.com

ARCHITECT OF RECORD:



Group SA Pty Ltd ABN 78 002 113 779
Level 7, 80 William St East Sydney NSW
Australia 2011 www.groupsa.com
T +612 9381 4144 F +612 9332 3458
architecture interior design urban design planning
nom architect M. Sheldon 3990



DESIGN ARCHITECT

1110 112TH AVE. NE | SUITE 500
BELLEVUE, WA | 98004

1.425.463.2000 | 1.425.463.2002

MulvannyG2.com

CONSULTANTS:

Seattle

Structural

Seattle Structural PS Inc.

Civil and Structural Engineering

1420 Fifth Avenue, Suite 425

Seattle, WA 98101-4019

206-343-3000 phone 206-343-3013 fax



HughesTrueman

Consulting Engineers Planners & Managers

ABN 55 813 523 091

Level 2, 60 Pacific Hwy, PO Box 151, St Leonards NSW 2055

T +61 2 9439 2833 F +61 2 9438 4500

stleonards@hughestrueman.com.au

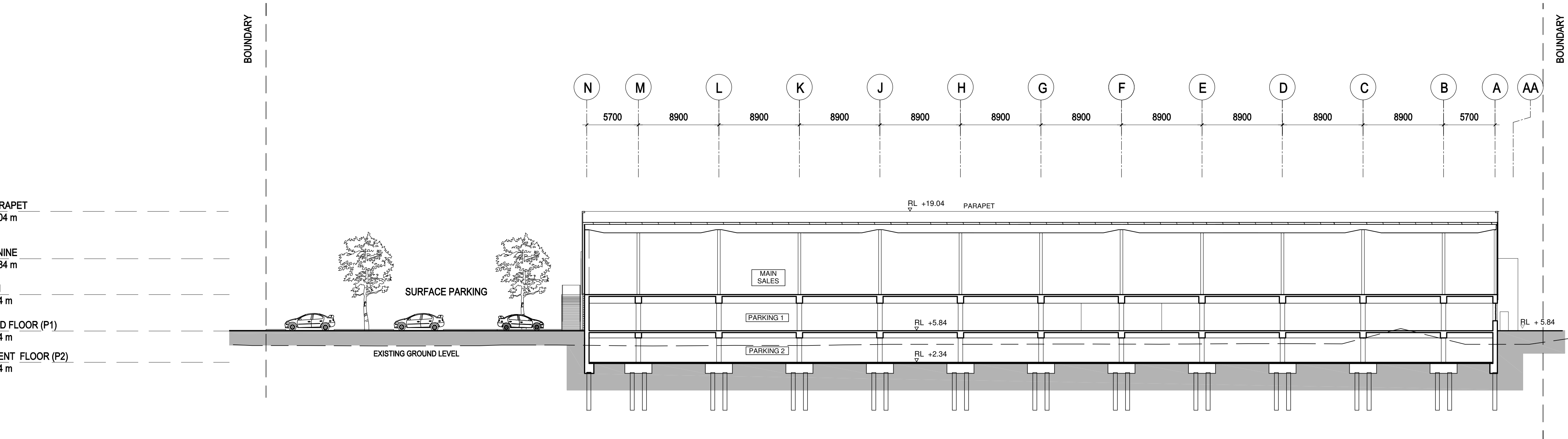
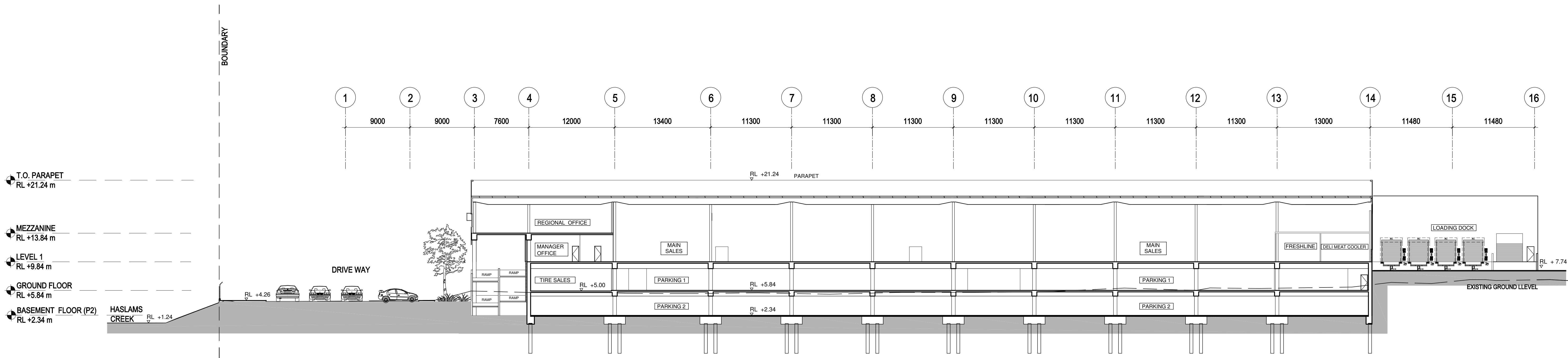


**MCGREGOR
COXALL**

LANDSCAPE ARCHITECTURE
URBAN DESIGN
ESD

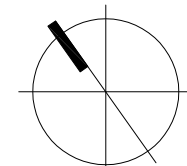
SECTION 1

SCALE: 1:250



SECTION 2

SCALE: 1:250



0 1 2 4 6m SCALE: 1:250

△	DATE	DESCRIPTION
A	14/09/09	REVISION PART 3A
B	28/09/09	SUBMISSION PART 3A

SEPTEMBER 28, 2009

SECTIONS

A4-3100-DA