

FIGURE 19.11

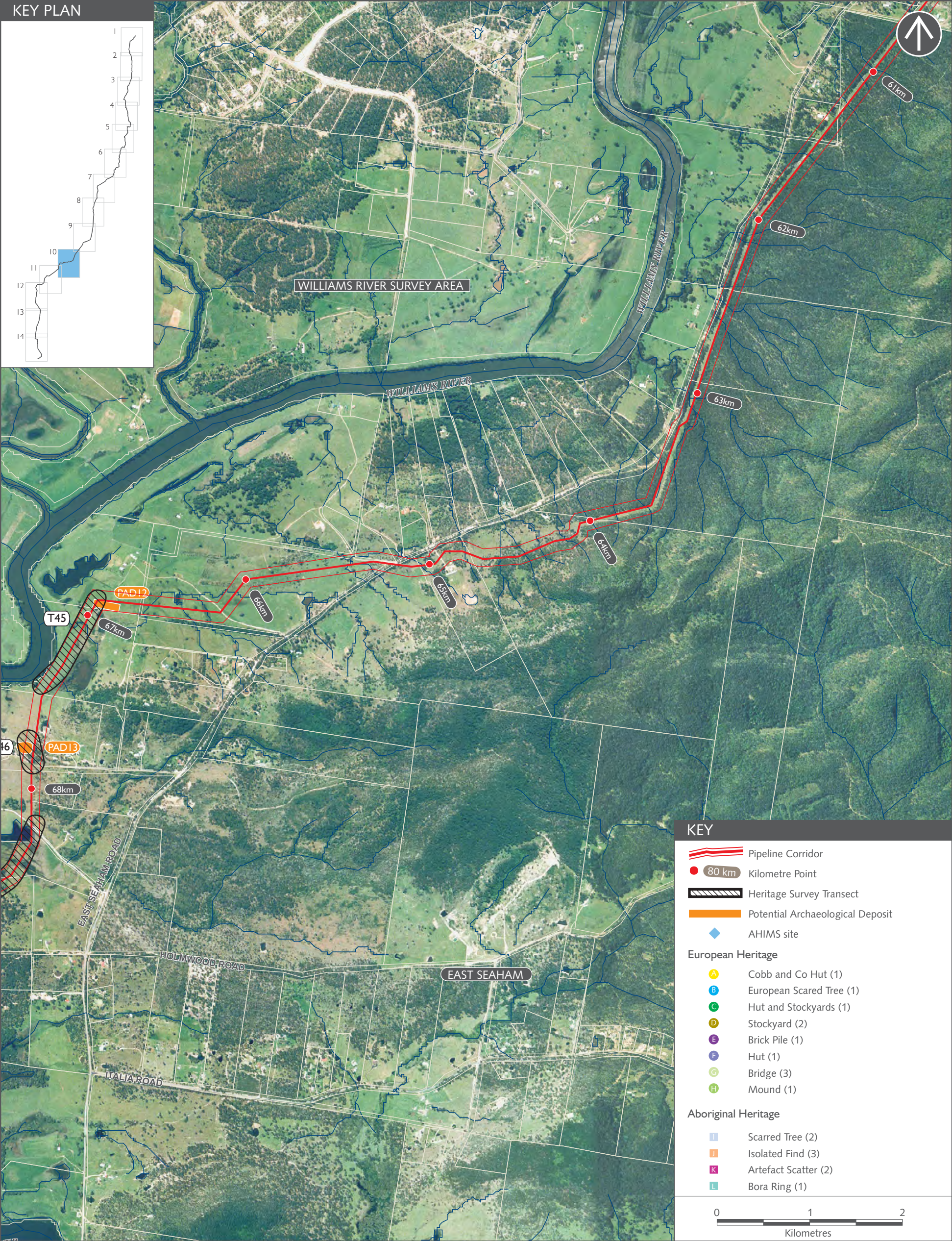


FIGURE 19.12

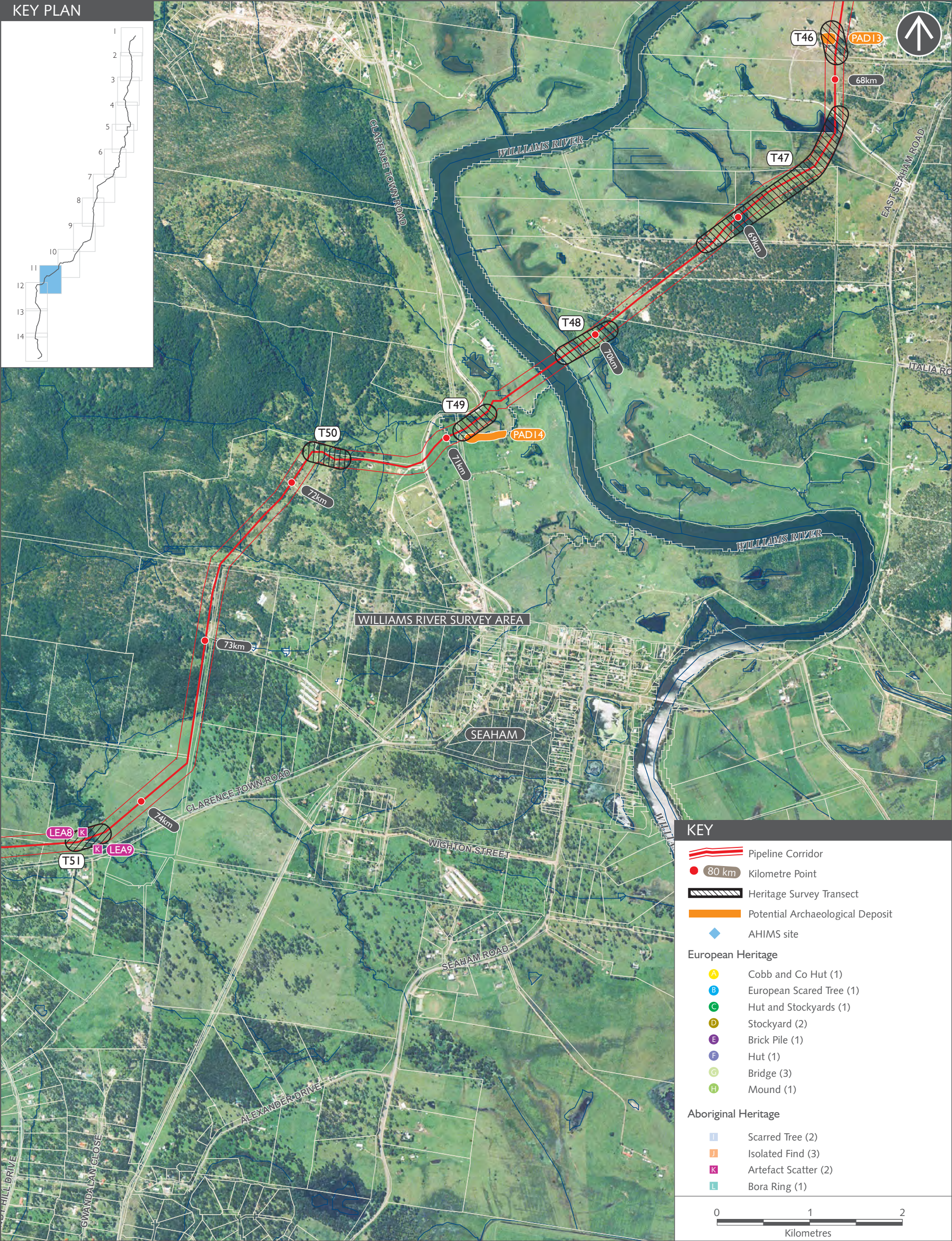


FIGURE 19.13

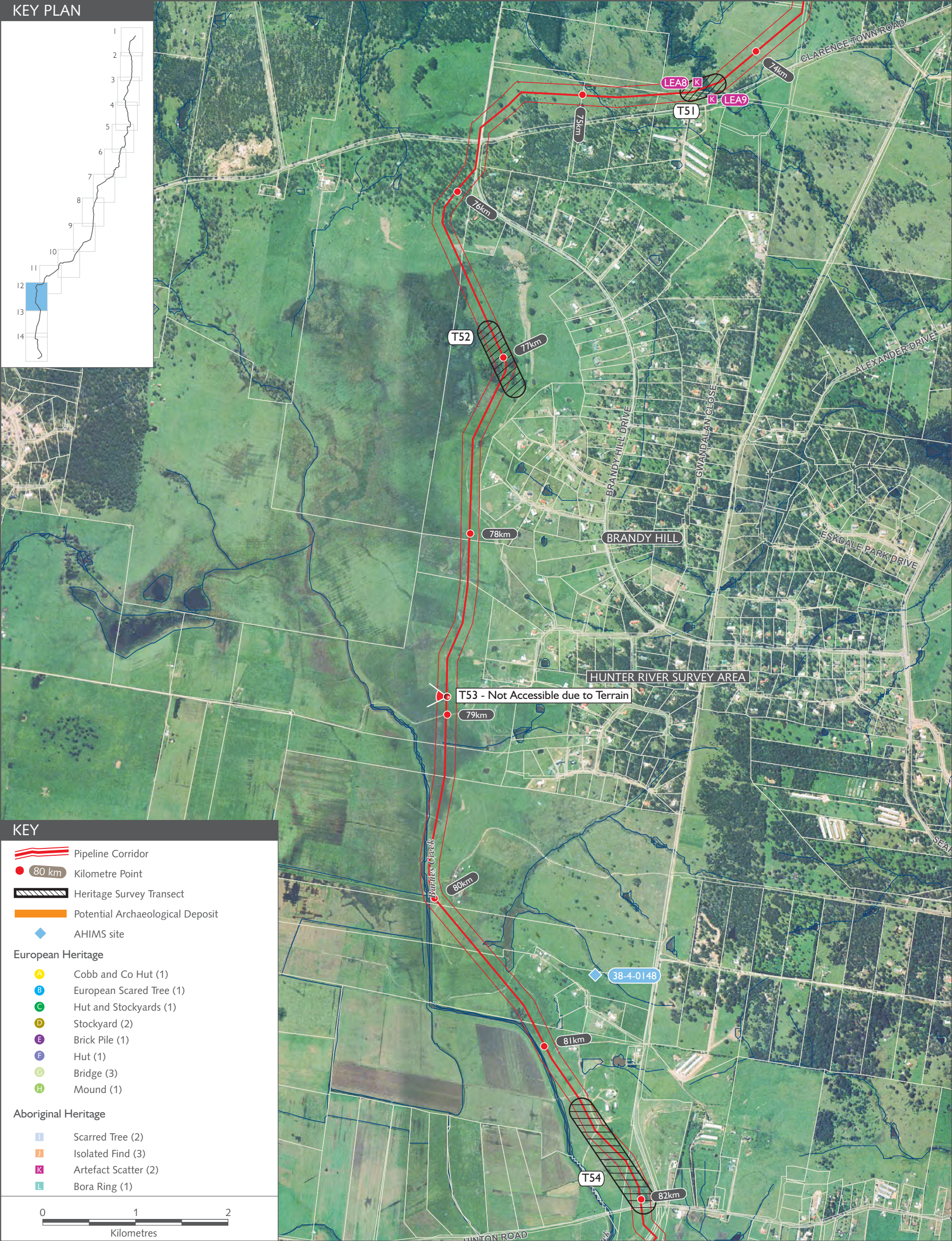
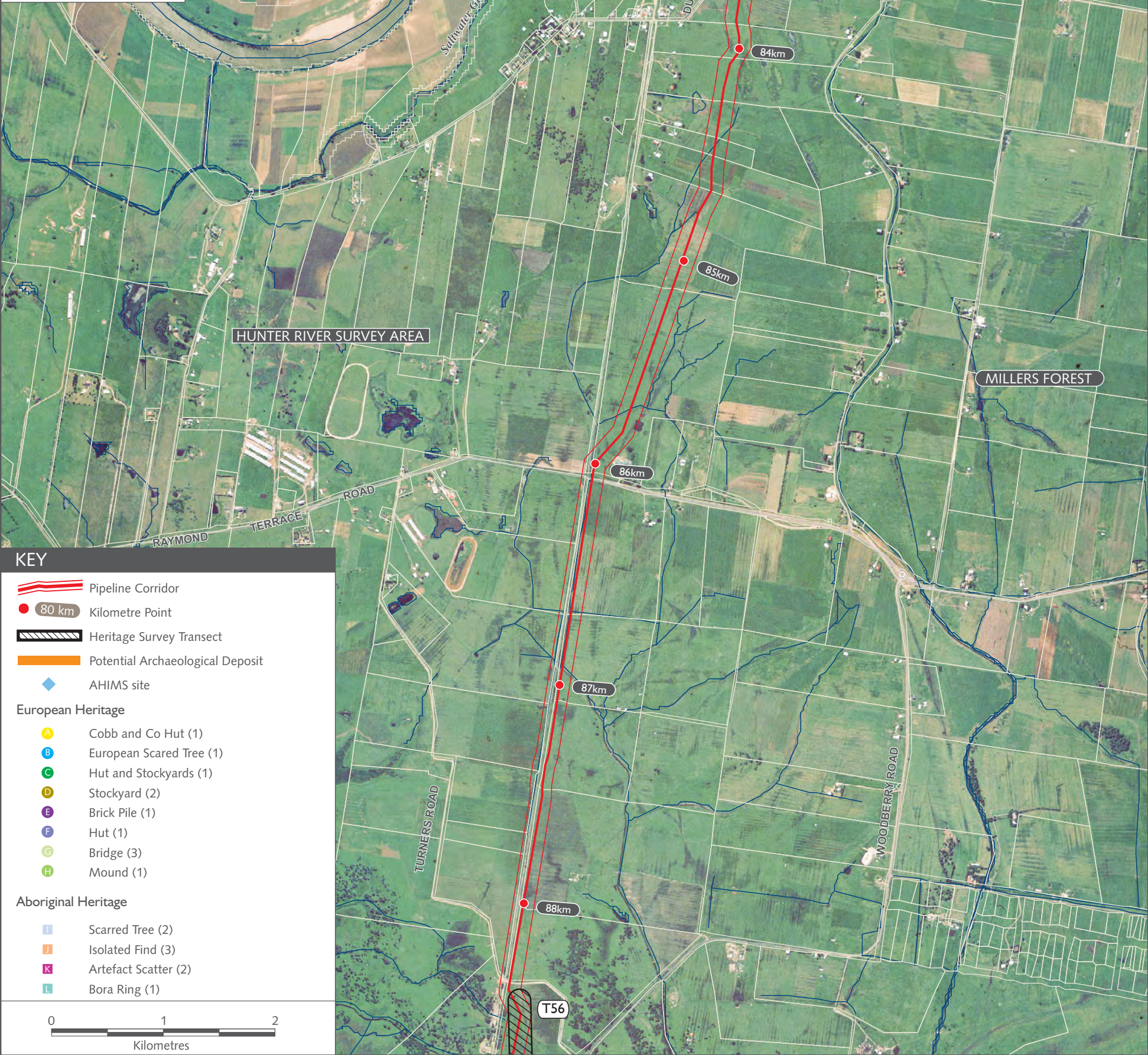
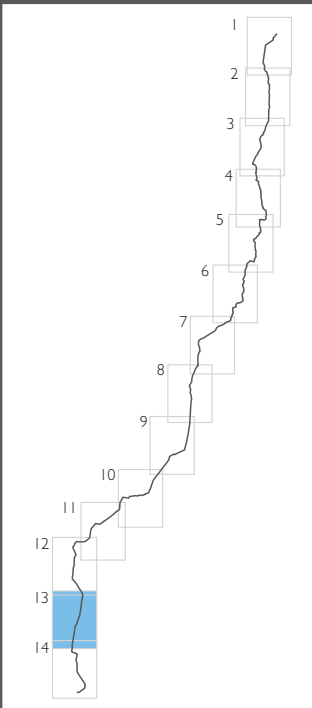


FIGURE 19.14

KEY PLAN



KEY

- Pipeline Corridor
- 80 km Kilometre Point
- Heritage Survey Transect
- Potential Archaeological Deposit
- AHIMS site
- European Heritage
 - Cobb and Co Hut (1)
 - European Scared Tree (1)
 - Hut and Stockyards (1)
 - Stockyard (2)
 - Brick Pile (1)
 - Hut (1)
 - Bridge (3)
 - Mound (1)
- Aboriginal Heritage
 - Scarred Tree (2)
 - Isolated Find (3)
 - Artefact Scatter (2)
 - Bora Ring (1)

AECOM

IDENTIFIED SITES AND HERITAGE SURVEY TRANSECTS - KILOMETRE POINT 82 - 88km
SHEET 13 OF 14

FIGURE 19.15

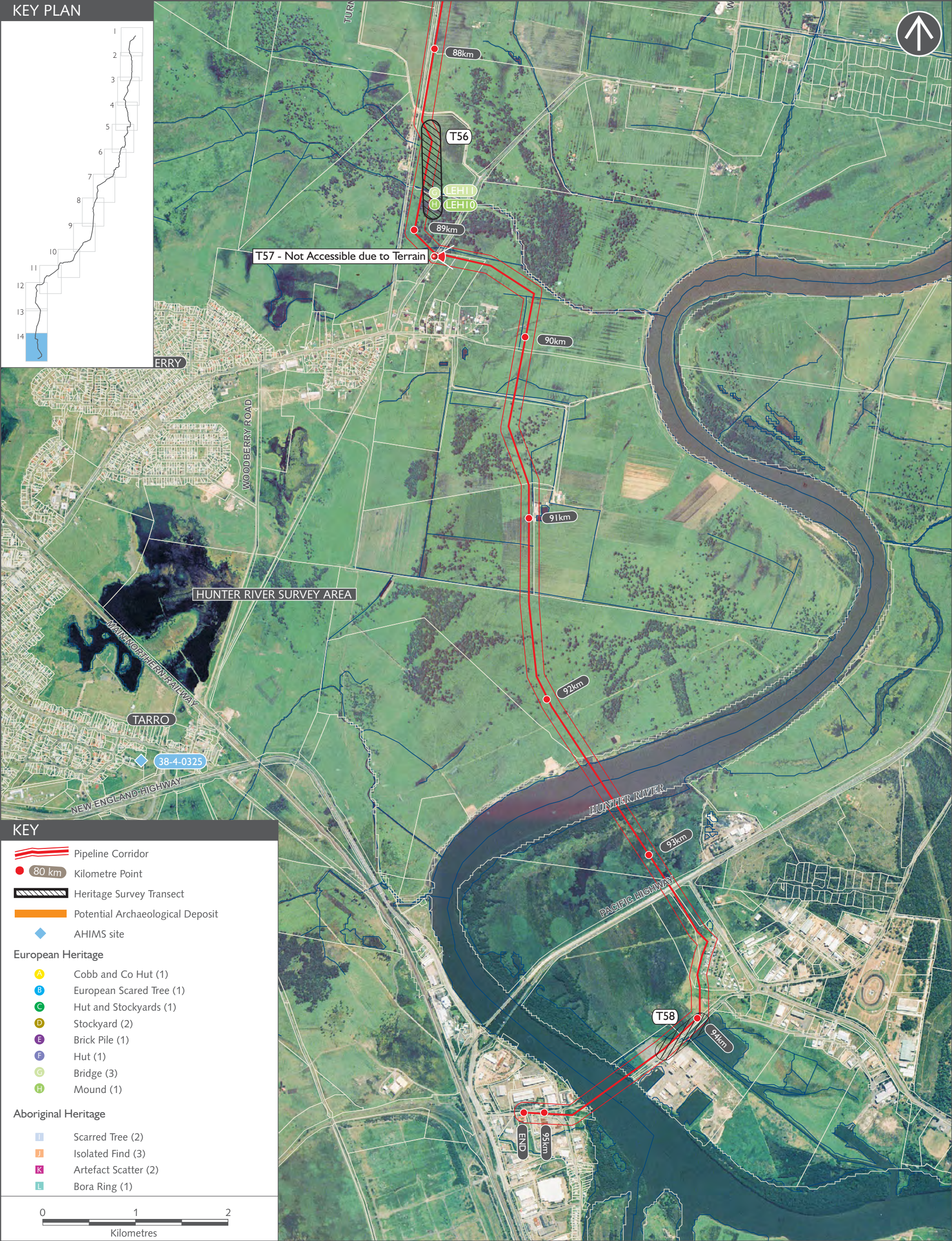


FIGURE 19.16



Photograph 1
Early regeneration of ground cover following hydro mulching along the roadside corridor.



Photograph 2
Early crop cover establishment along a pipeline easement.



Photograph 3
Re-spreading of vegetation over easement through Moreton National Park, NSW.



Photograph 4
Early establishment of revegetation through heavily vegetated area. Re-spreading of vegetation across easement evident.



Photograph 5
Rehabilitation of an open trenched creek crossing. Hydro mulching, rip rap and sediment and erosion control fencing present along creek line.



Photograph 6
Hand-broadcasting of seed along drainage line. Rock walls placed to assist with bank stability.



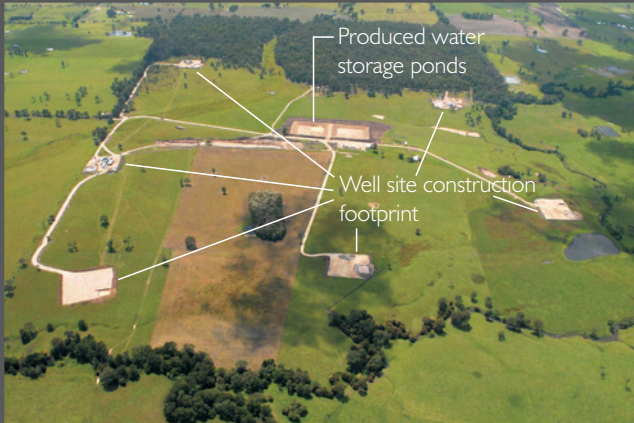
Photograph 7
Rehabilitation of open trenched creek crossing. Natural contours have been restored and rip rap placed to assist bank stability.



Photograph 8
Turf laid over easement through sporting field.



Photograph 9
Predominantly rehabilitated pipeline corridor through rural land.



Photograph 10
Aerial photograph of the initial construction footprint (approx 90x90m) for each well site at the Stratford Pilot (6 wells)



Photograph 11
Aerial photograph of the reduced and rehabilitated footprint (15x15m) for each well site at the Stratford Pilot