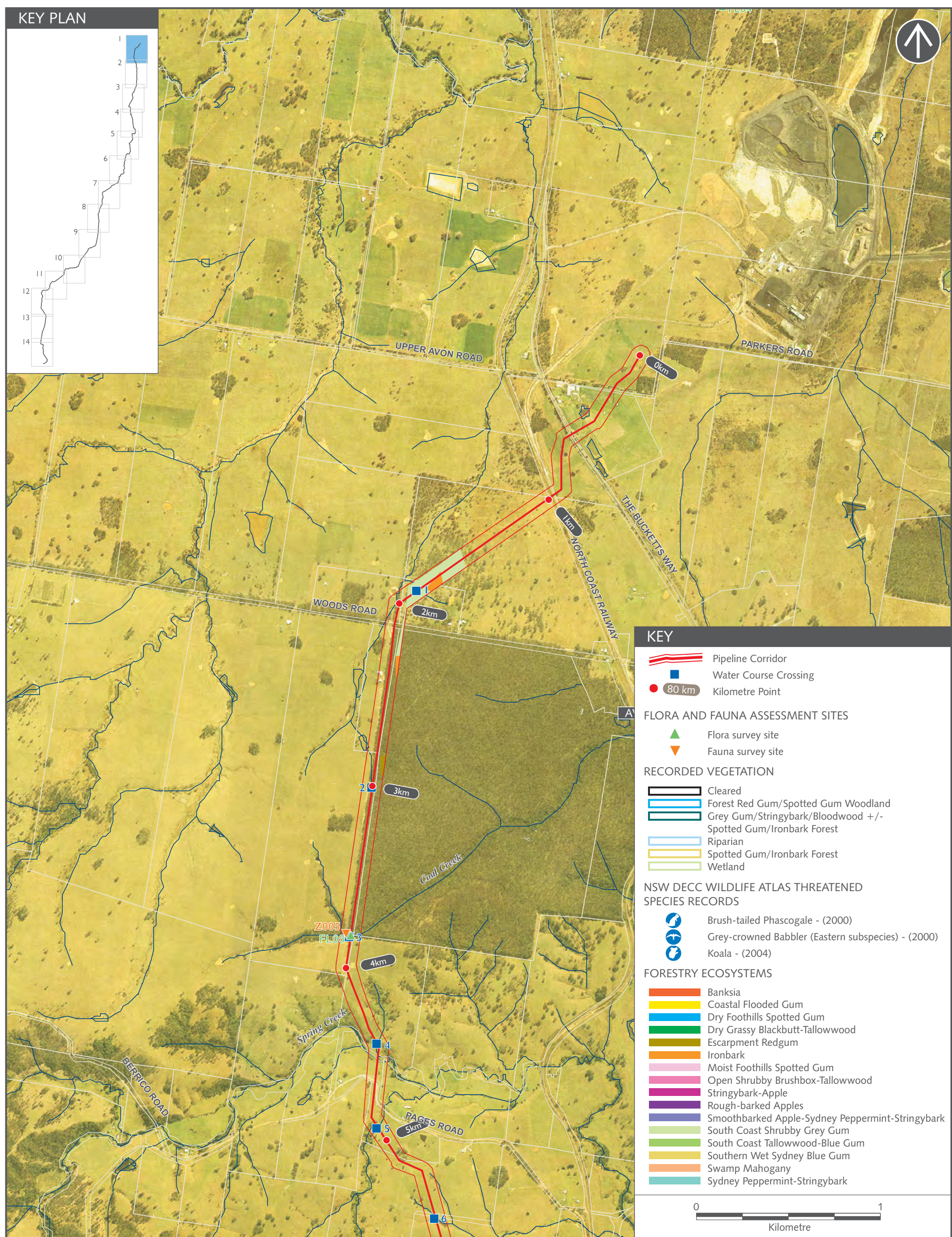


AECOM

FLORA AND FAUNA ASSESSMENT SITES, RECORDED VEGETATION ALONG PIPELINE ROUTE, NSW DECC WILDLIFE ATLAS THREATENED SPECIES RECORDS, FORESTRY ECOSYSTEMS AND WATERCOURSE CROSSINGS - STAGE 1 GAS FIELD DEVELOPMENT AREA

FIGURE 10.1



AECOM

FLORA AND FAUNA ASSESSMENT SITES AND NSW DECC WILDLIFE ATLAS THREATENED SPECIES RECORDS AND FORESTRY ECOSYSTEMS ALONG PIPELINE ROUTE
KILOMETRE POINT 0 - 5KM - SHEET 1 OF 14

FIGURE 10.2

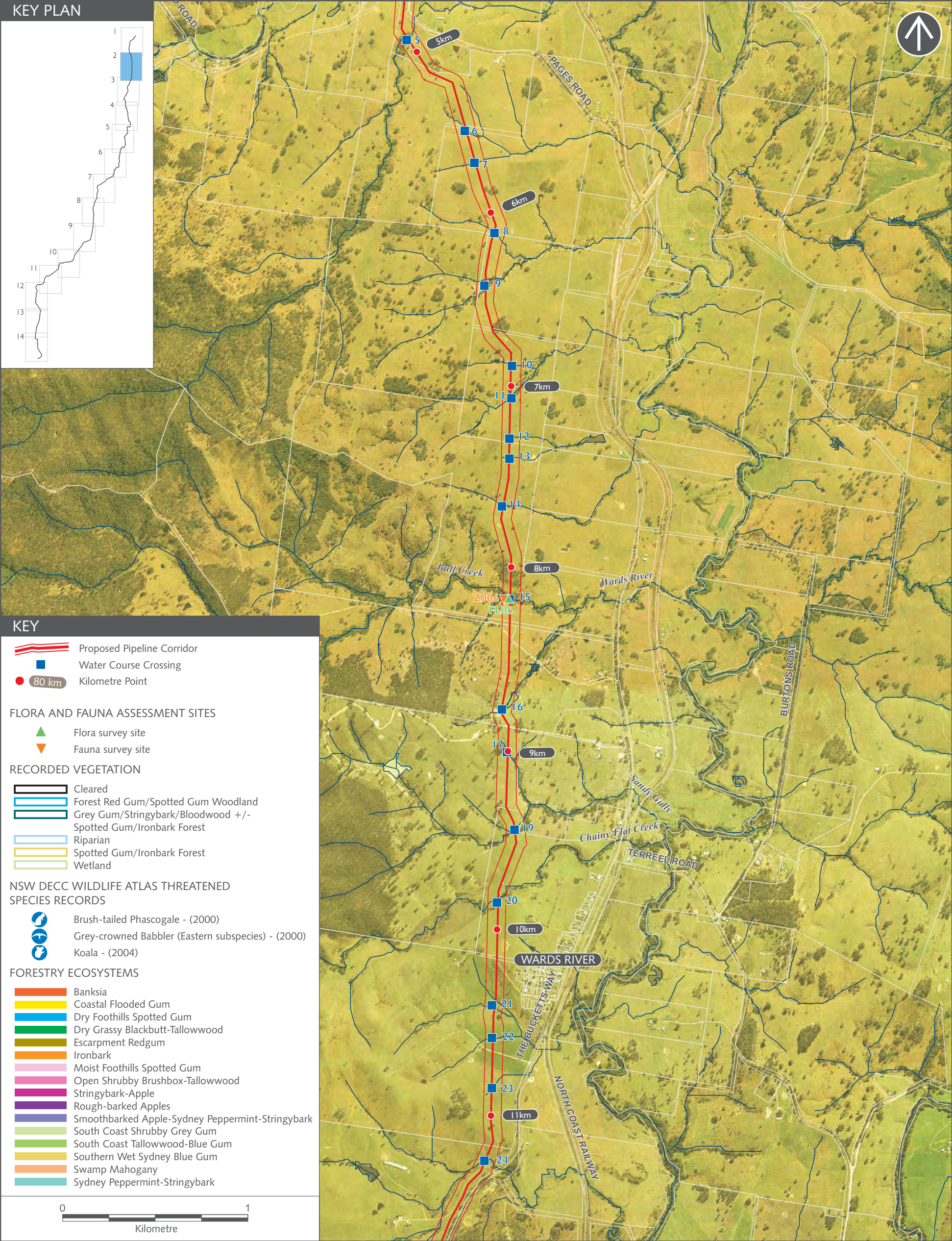


FIGURE 10.3

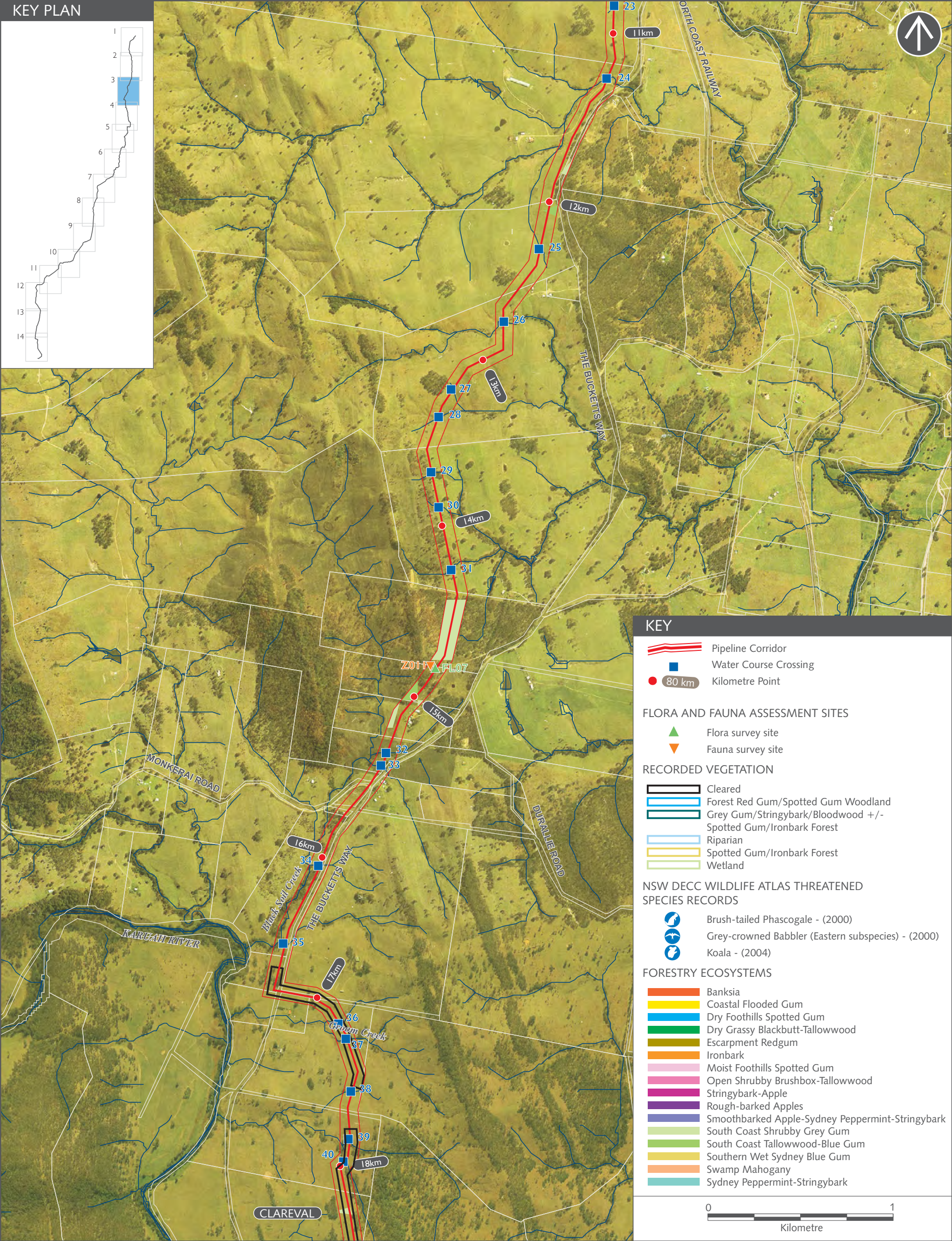
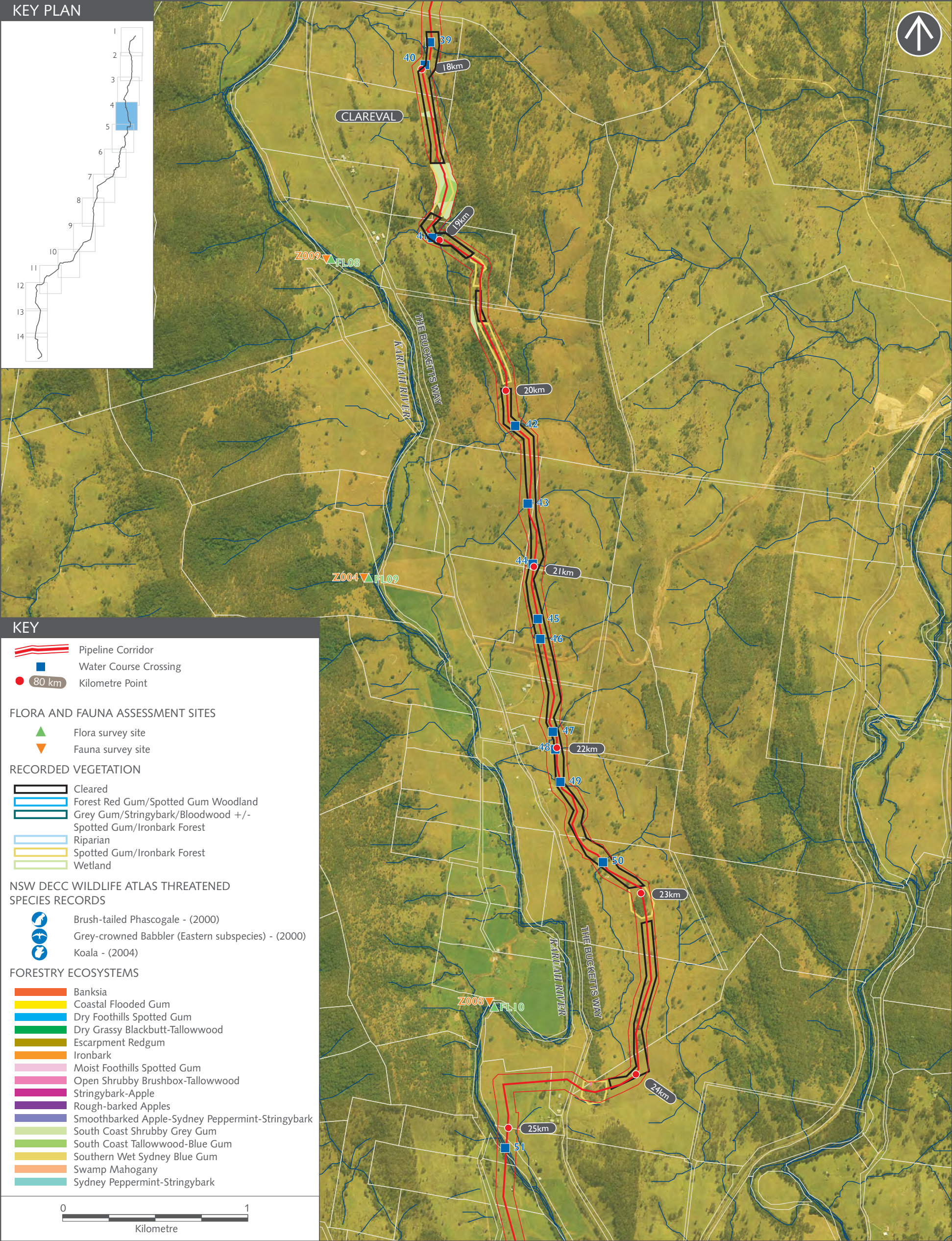


FIGURE 10.4



AECOM

FLORA AND FAUNA ASSESSMENT SITES AND NSW DECC WILDLIFE ATLAS THREATENED SPECIES RECORDS AND FORESTRY ECOSYSTEMS ALONG PIPELINE ROUTE KILOMETRE POINT 18 - 25KM

FIGURE 10.5

