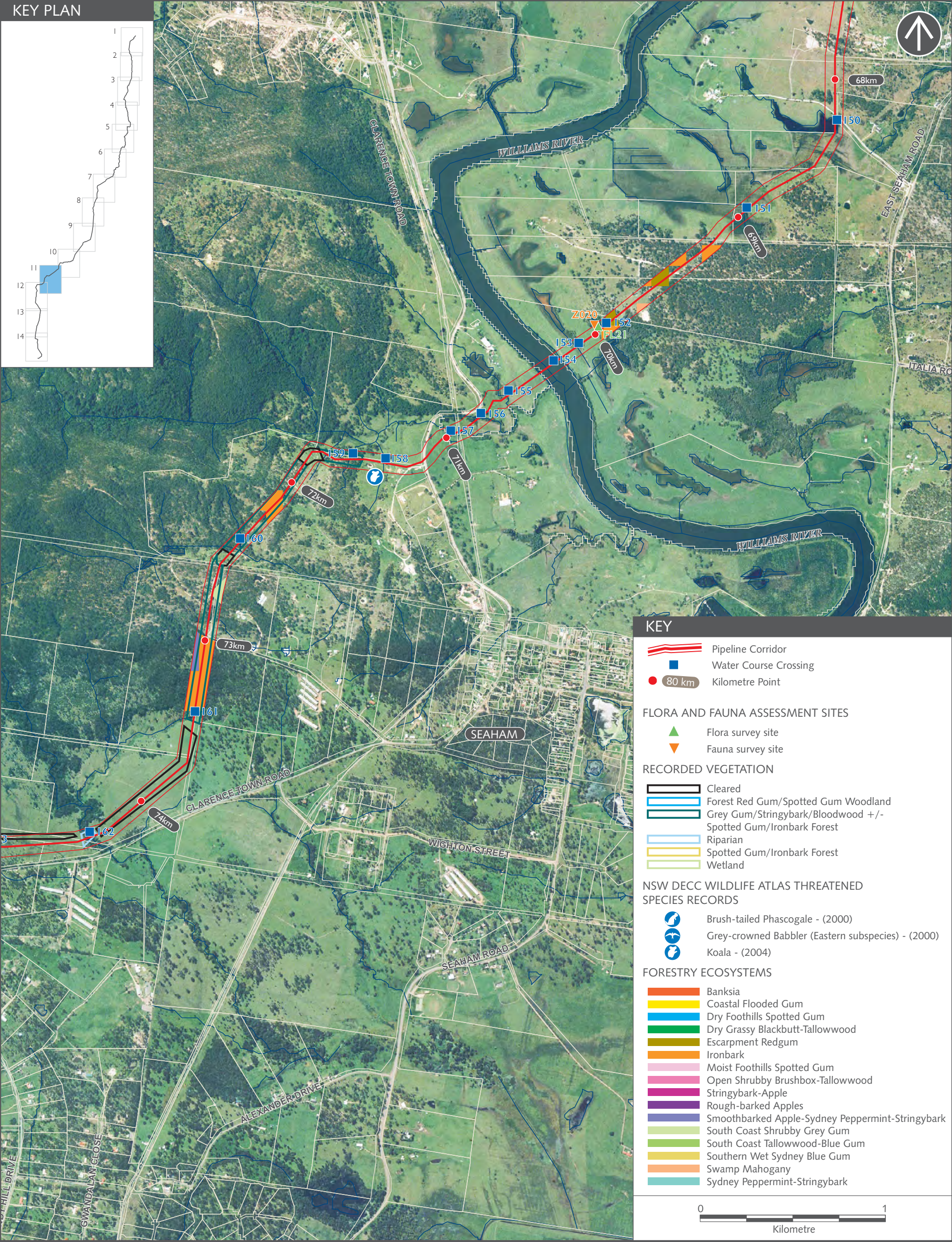


FIGURE 10.11



AECOM

FLORA AND FAUNA ASSESSMENT SITES AND NSW DECC WILDLIFE ATLAS THREATENED SPECIES RECORDS AND FORESTRY ECOSYSTEMS ALONG PIPELINE ROUTE KILOMETRE POINT 68 - 74KM

FIGURE 10.12

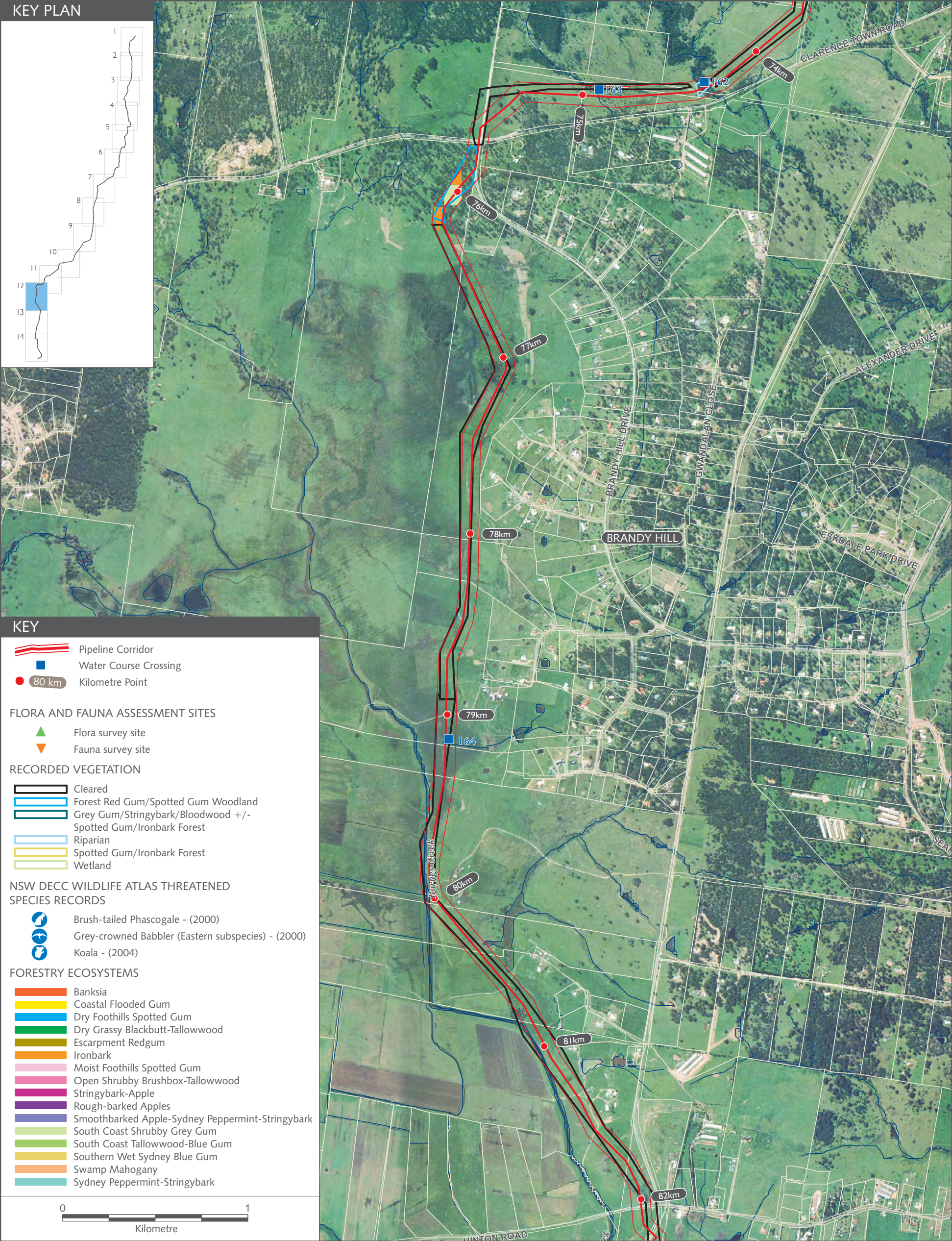
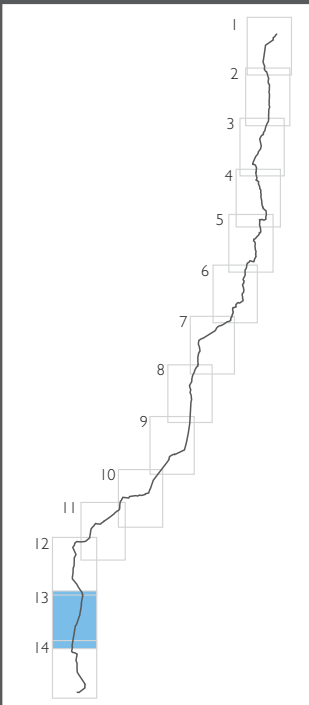


FIGURE 10.13

KEY PLAN



KEY

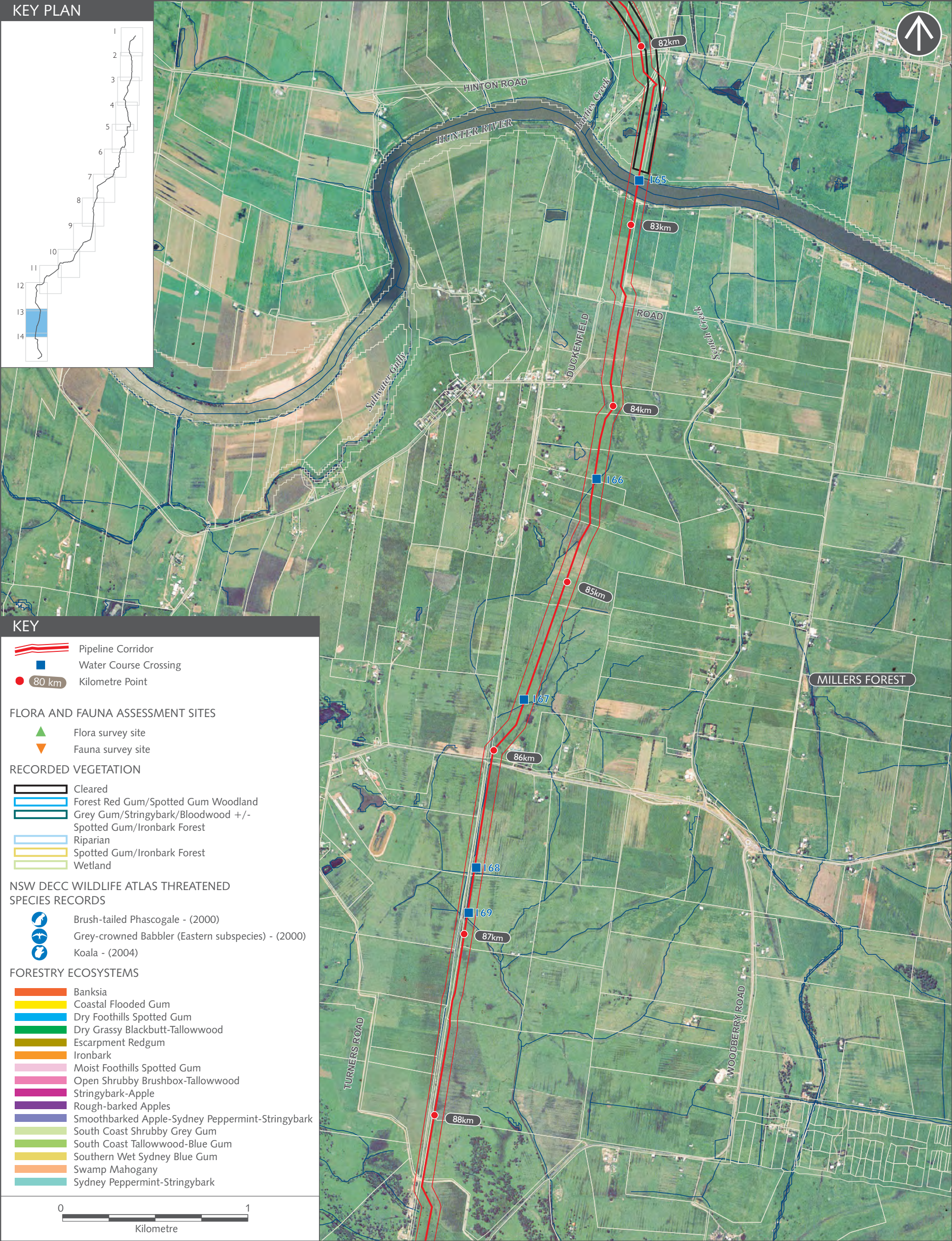
- Pipeline Corridor
- Water Course Crossing
- Kilometre Point

- FLORA AND FAUNA ASSESSMENT SITES
- Flora survey site
 - Fauna survey site

- RECORDED VEGETATION
- Cleared
 - Forest Red Gum/Spotted Gum Woodland
 - Grey Gum/Stringybark/Bloodwood +/- Spotted Gum/Ironbark Forest
 - Riparian
 - Spotted Gum/Ironbark Forest
 - Wetland

- NSW DECC WILDLIFE ATLAS THREATENED SPECIES RECORDS
- Brush-tailed Phascogale - (2000)
 - Grey-crowned Babbler (Eastern subspecies) - (2000)
 - Koala - (2004)

- FORESTRY ECOSYSTEMS
- Banksia
 - Coastal Flooded Gum
 - Dry Foothills Spotted Gum
 - Dry Grassy Blackbutt-Tallowwood
 - Escarpment Redgum
 - Ironbark
 - Moist Foothills Spotted Gum
 - Open Shrubby Brushbox-Tallowwood
 - Stringybark-Apple
 - Rough-barked Apples
 - Smoothbarked Apple-Sydney Peppermint-Stringybark
 - South Coast Shrubby Grey Gum
 - South Coast Tallowwood-Blue Gum
 - Southern Wet Sydney Blue Gum
 - Swamp Mahogany
 - Sydney Peppermint-Stringybark

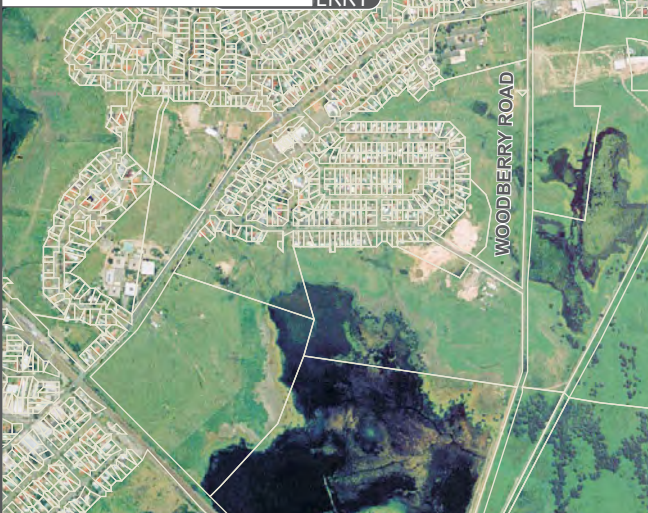
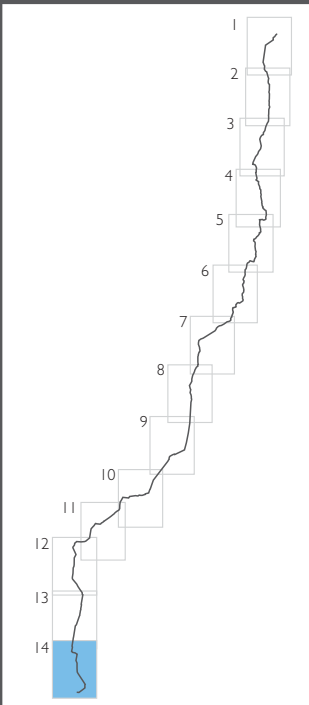


AECOM

FLORA AND FAUNA ASSESSMENT SITES AND NSW DECC WILDLIFE ATLAS THREATENED SPECIES RECORDS AND FORESTRY ECOSYSTEMS ALONG PIPELINE ROUTE
KILOMETRE POINT 82 - 88KM - SHEET 13 OF 14

FIGURE 10.14

KEY PLAN



KEY

- Pipeline Corridor
- Water Course Crossing
- Kilometre Point

FLORA AND FAUNA ASSESSMENT SITES

- Flora survey site
- Fauna survey site

RECORDED VEGETATION

- Cleared
- Forest Red Gum/Spotted Gum Woodland
- Grey Gum/Stringybark/Bloodwood +/- Spotted Gum/Ironbark Forest
- Riparian
- Spotted Gum/Ironbark Forest
- Wetland

NSW DECC WILDLIFE ATLAS THREATENED SPECIES RECORDS

- Brush-tailed Phascogale - (2000)
- Grey-crowned Babbler (Eastern subspecies) - (2000)
- Koala - (2004)

FORESTRY ECOSYSTEMS

- Banksia
- Coastal Flooded Gum
- Dry Foothills Spotted Gum
- Dry Grassy Blackbutt-Tallowwood
- Escarpment Redgum
- Ironbark
- Moist Foothills Spotted Gum
- Open Shrubby Brushbox-Tallowwood
- Stringybark-Apple
- Rough-barked Apples
- Smoothbarked Apple-Sydney Peppermint-Stringybark
- South Coast Shrubby Grey Gum
- South Coast Tallowwood-Blue Gum
- Southern Wet Sydney Blue Gum
- Swamp Mahogany
- Sydney Peppermint-Stringybark



AECOM

FLORA AND FAUNA ASSESSMENT SITES AND NSW DECC WILDLIFE ATLAS THREATENED SPECIES RECORDS AND FORESTRY ECOSYSTEMS ALONG PIPELINE ROUTE
KILOMETRE POINT 88 - END - SHEET 14 OF 14

FIGURE 10.15