

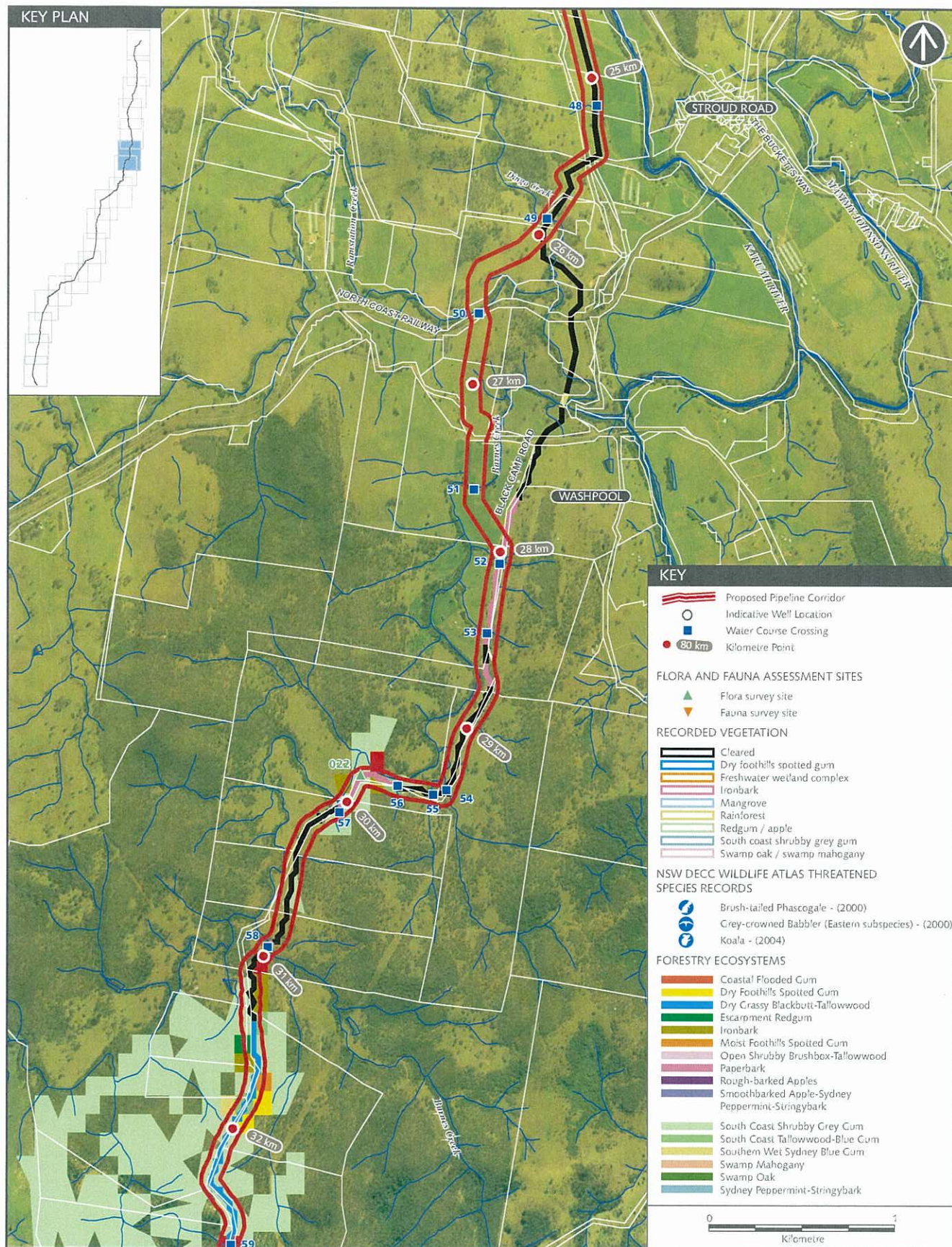
*"This page has been left blank intentionally"*





*"This page has been left blank intentionally"*





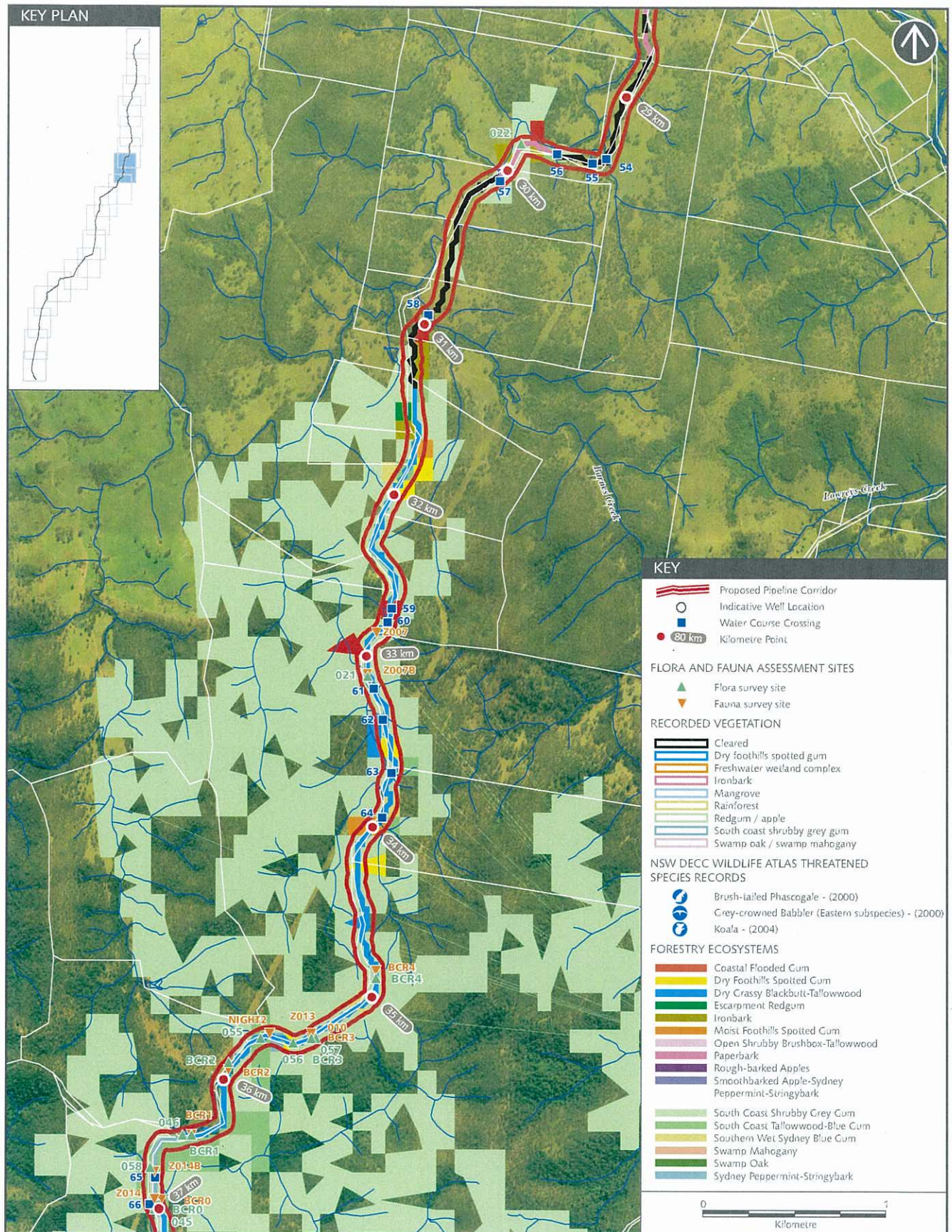
ENSR | AECOM

FLORA AND FAUNA SURVEY ASSESSMENT SITES, RECORDED VEGETATION ALONG  
PIPELINE ROUTE, NSW DECC WILDLIFE ATLAS THREATENED SPECIES RECORDS,  
FORESTRY ECOSYSTEMS AND WATER COURSE CROSSINGS  
KILOMETRE POINT 25-30KM - SHEET 6 OF 18

Figure 7

*"This page has been left blank intentionally"*





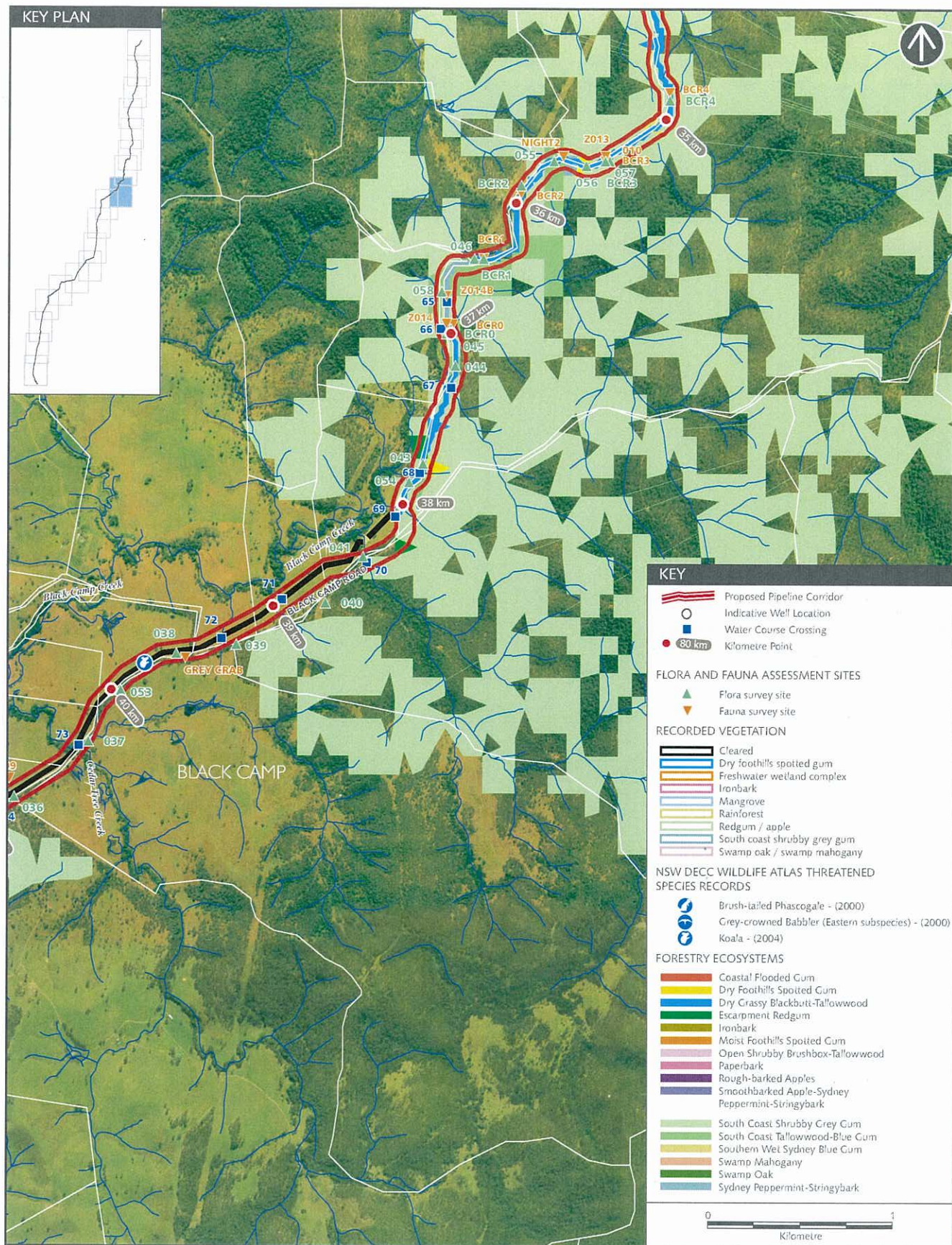
ENSR | AECOM

FLORA AND FAUNA SURVEY ASSESSMENT SITES, RECORDED VEGETATION ALONG  
PIPELINE ROUTE, NSW DECC WILDLIFE ATLAS THREATENED SPECIES RECORDS,  
FORESTRY ECOSYSTEMS AND WATER COURSE CROSSINGS  
KILOMETRE POINT 30-35KM - SHEET 7 OF 18

Figure 8

*"This page has been left blank intentionally"*





ENSR | AECOM

FLORA AND FAUNA SURVEY ASSESSMENT SITES, RECORDED VEGETATION ALONG PIPELINE ROUTE, NSW DECC WILDLIFE ATLAS THREATENED SPECIES RECORDS, FORESTRY ECOSYSTEMS AND WATER COURSE CROSSINGS  
KILOMETRE POINT 35-40KM - SHEET 8 OF 18

Figure 9

*"This page has been left blank intentionally"*