



THE CATCHMENT

- A.1 **Location**
- A.2 **Topography**
- A.3 **Geology**
- A.4 **Soil Types**
- A.5 **Cover & Landuse**
- A.6 **Stream Network**
- A.7 **Gauging**

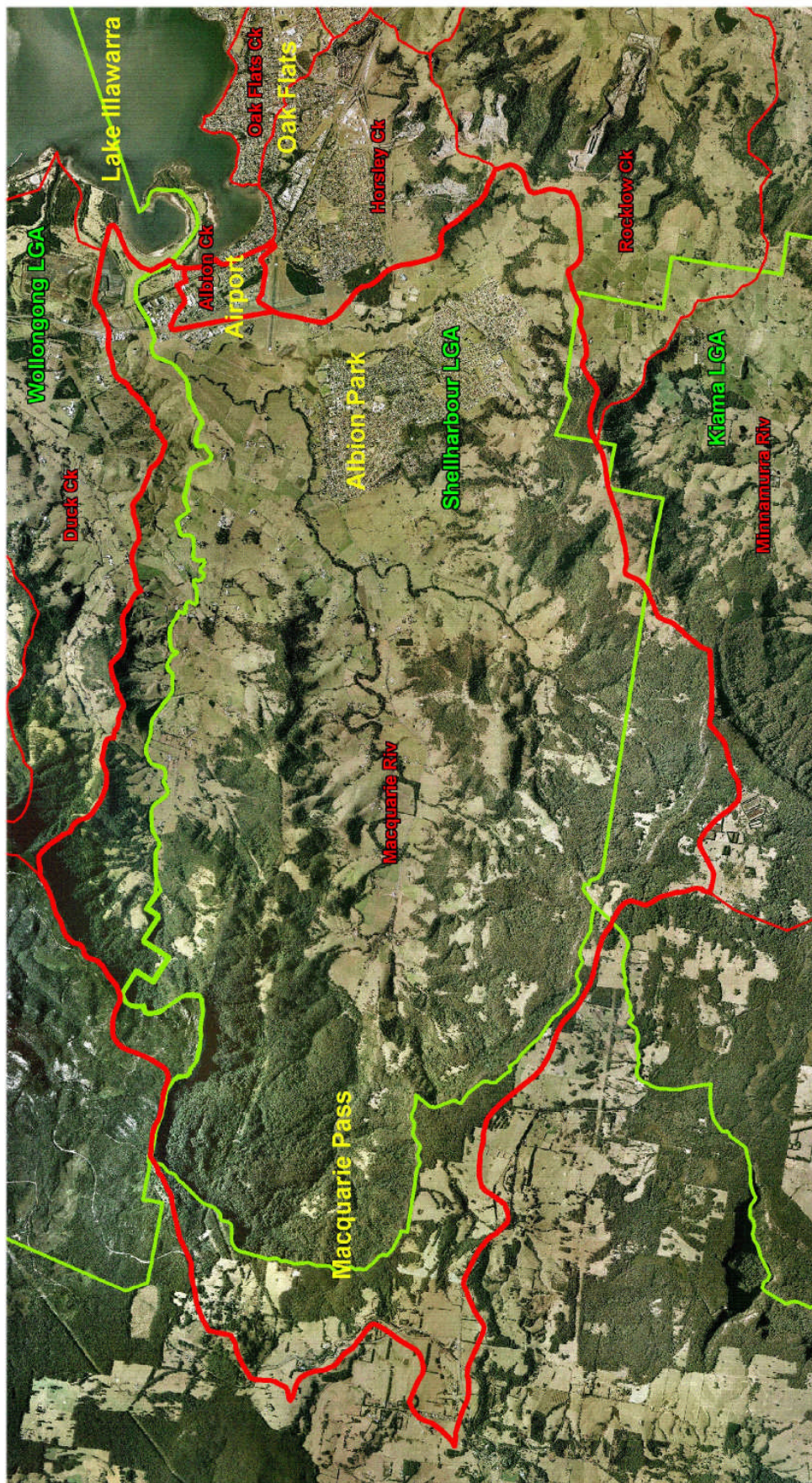
A

A

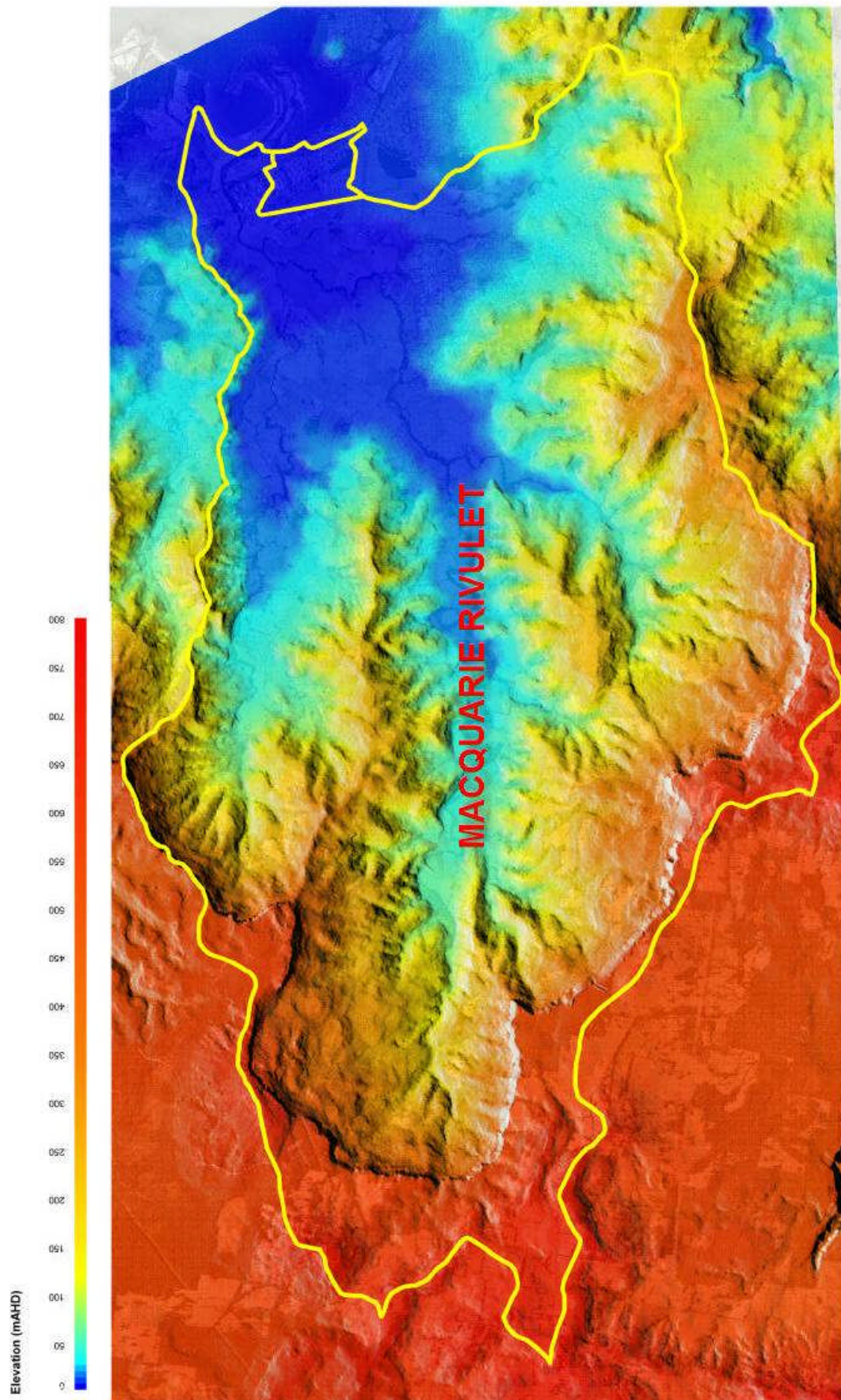
A

A

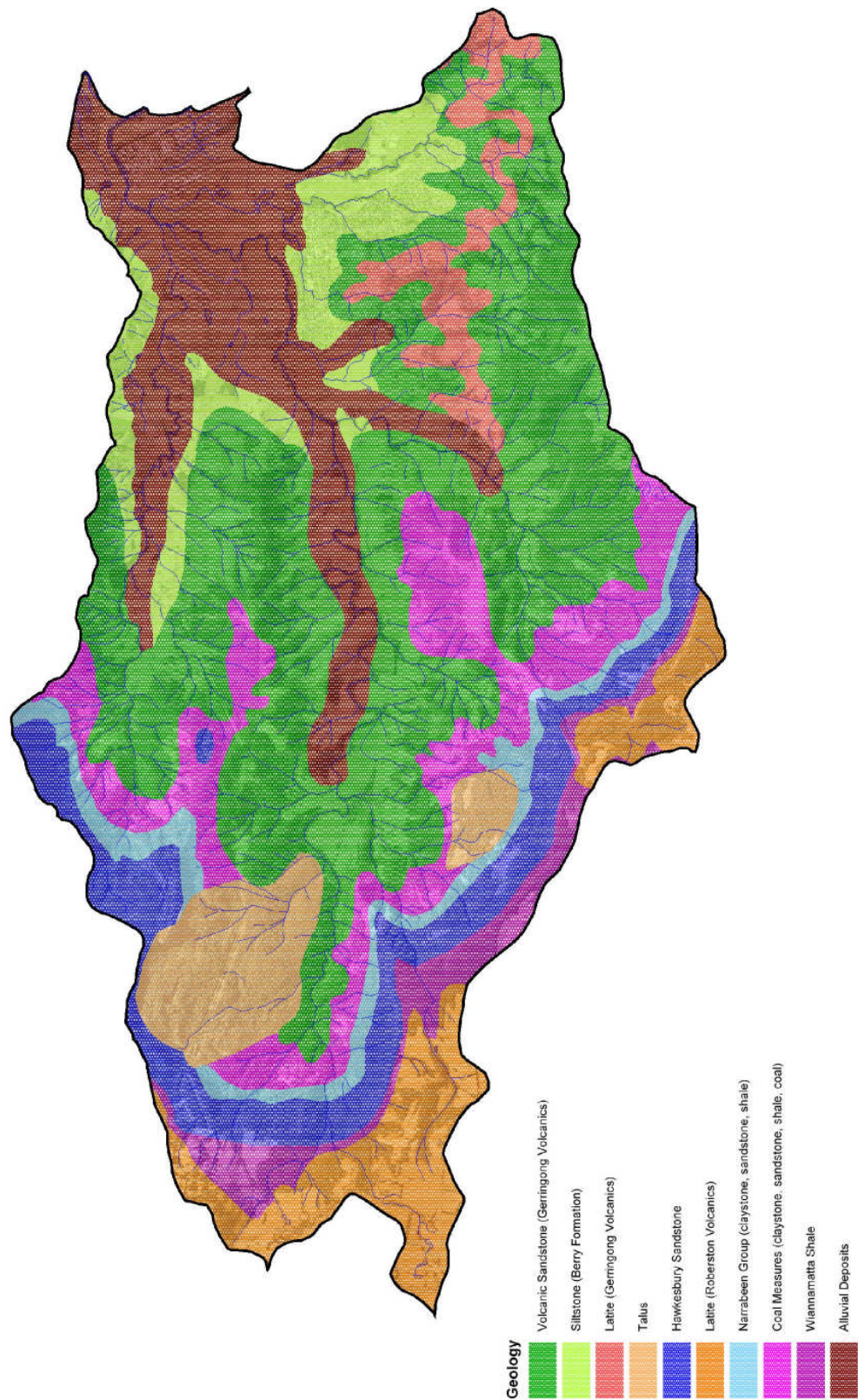
APPENDIX A



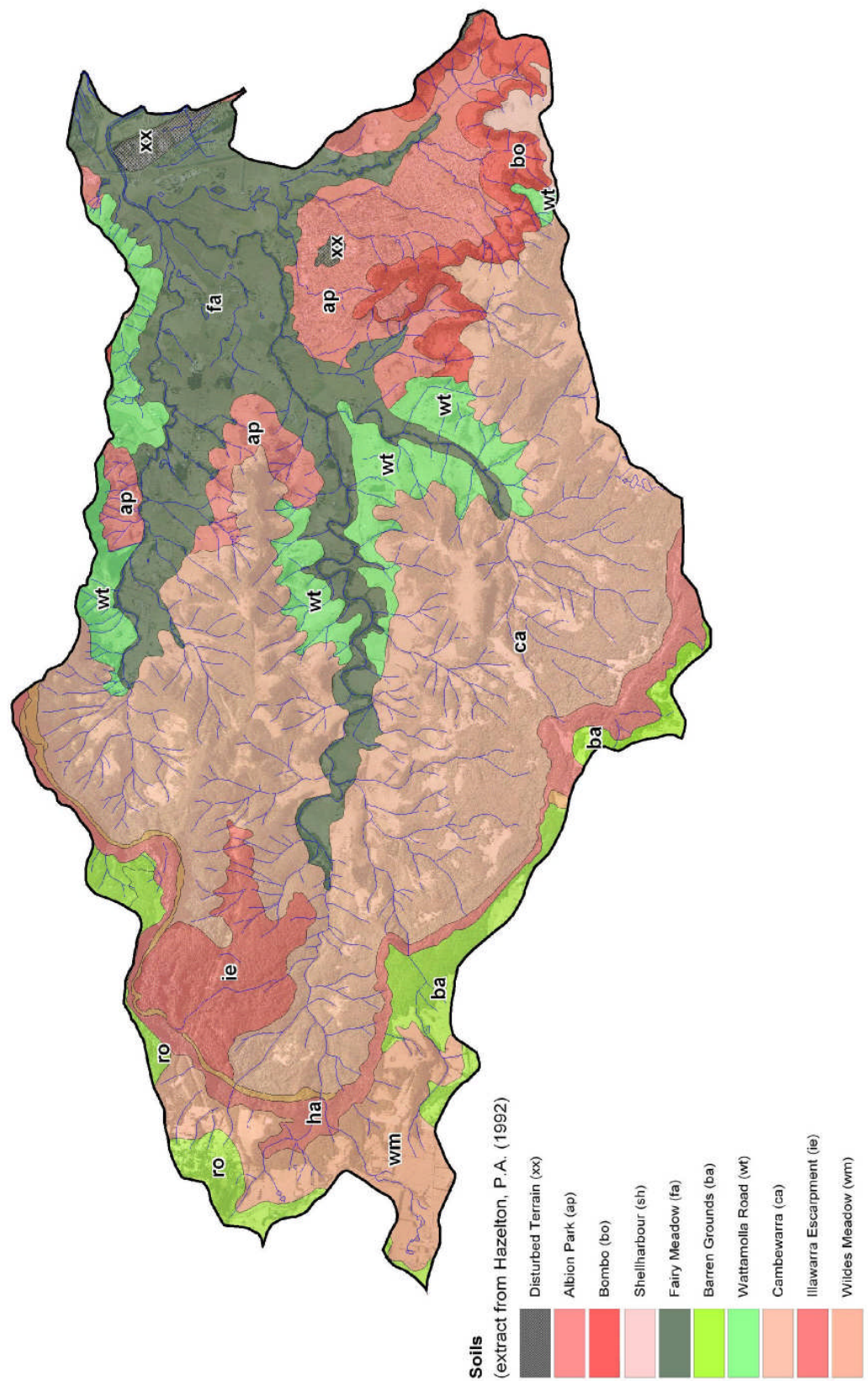
APPENDIX A1. CATCHMENT LOCATION



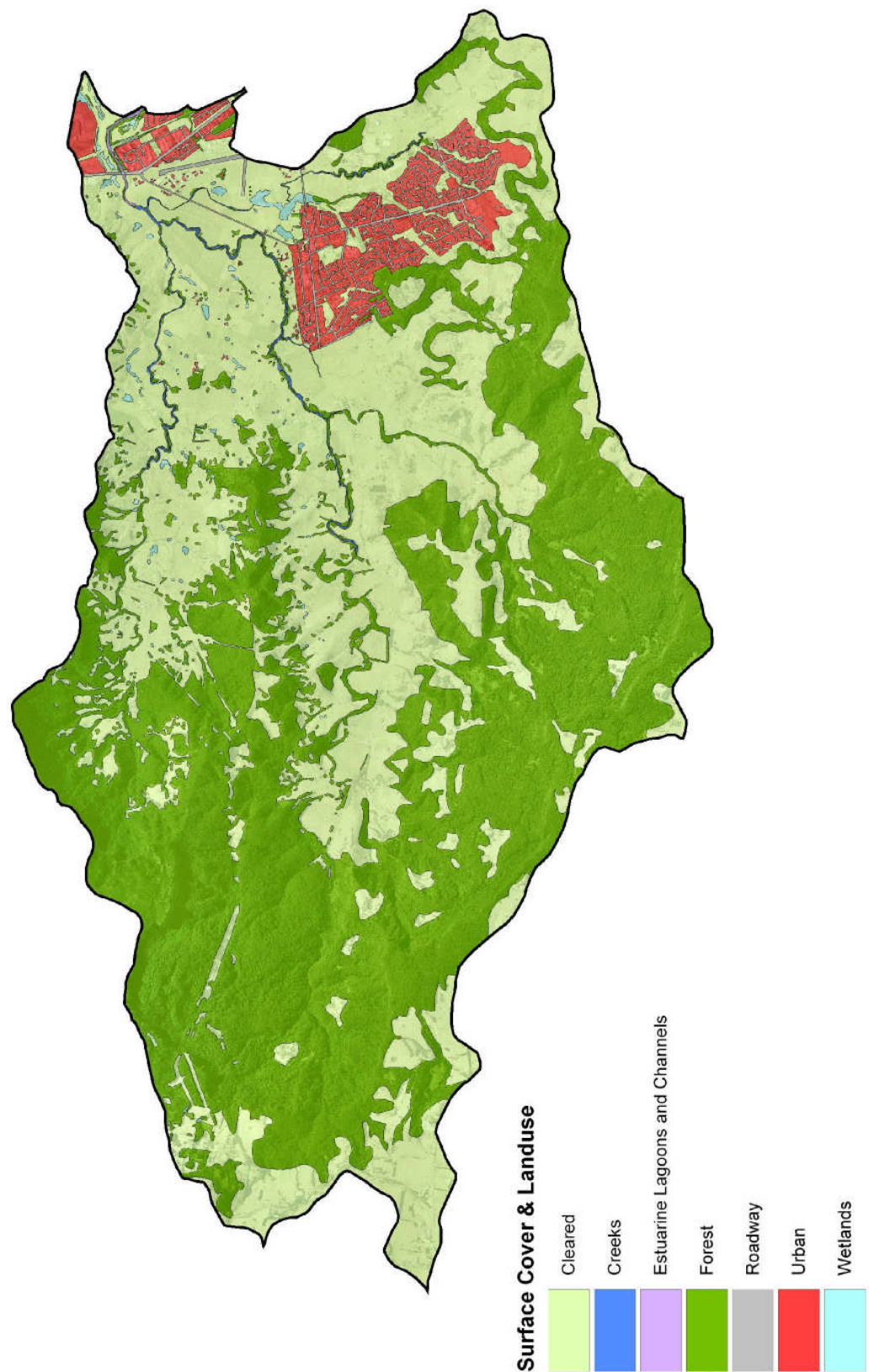
APPENDIX A2. CATCHMENT TOPOGRAPHY



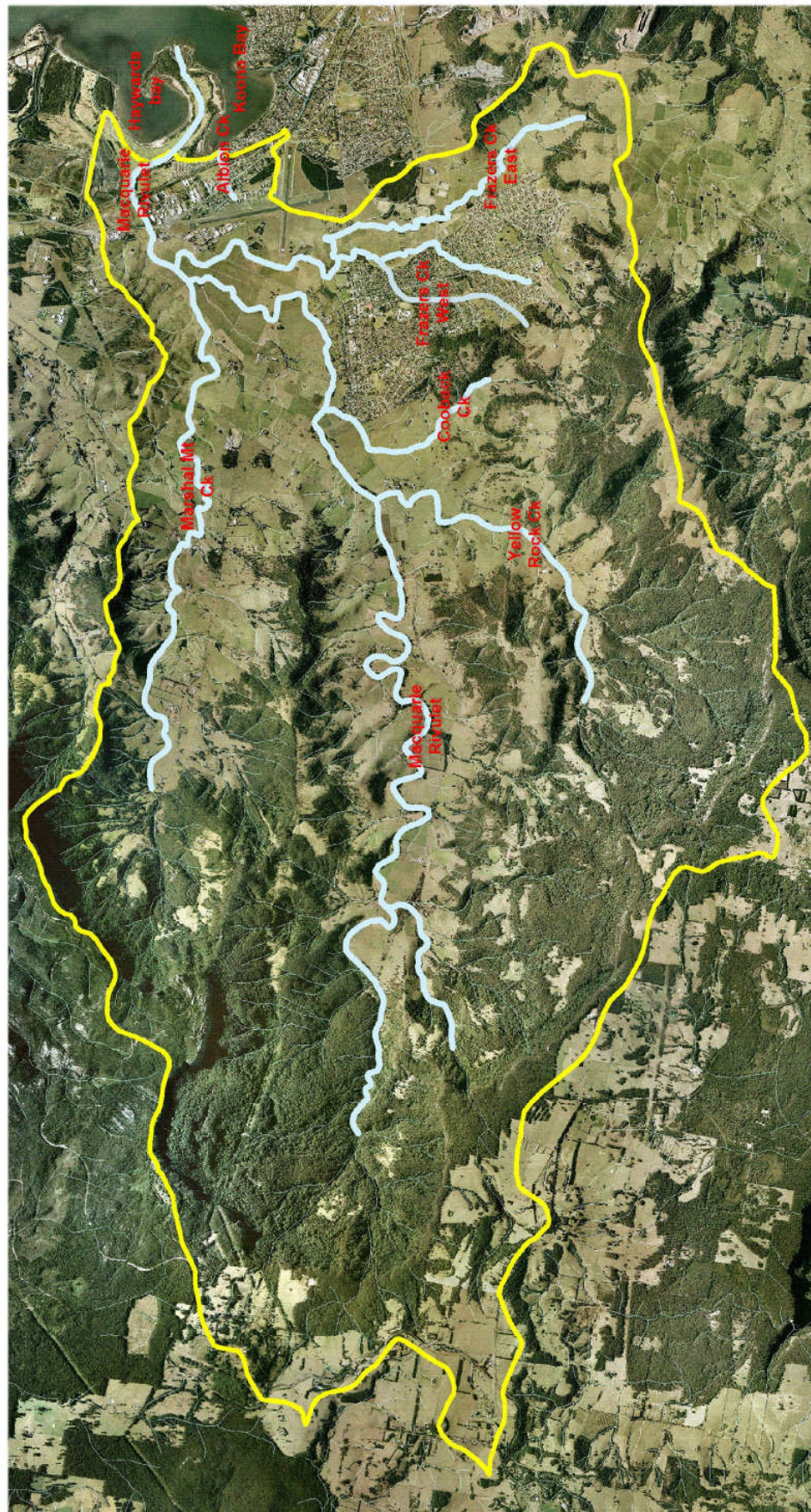
APPENDIX A3. CATCHMENT GEOLOGY



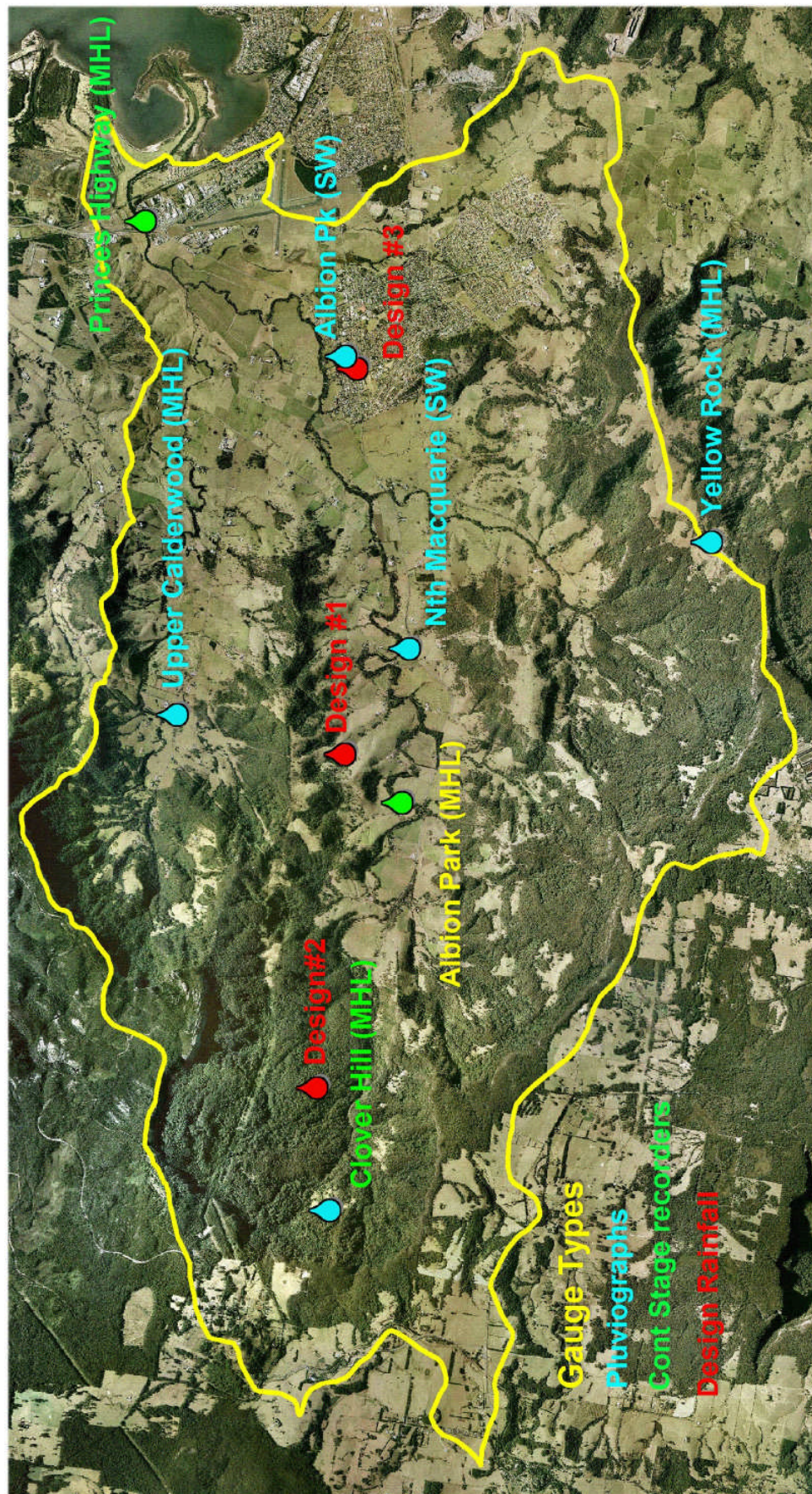
APPENDIX A4. CATCHMENT SOIL TYPES



APPENDIX A5. CATCHMENT COVER & LANDUSE



APPENDIX A6. CATCHMENT STREAM NETWORK



APPENDIX A7. CATCHMENT GAUGES



SUPPORTING DATA

- B.1 Aerial Photography
- B.2 ALS Survey Data
- B.3 Stream Photography
- B.4 Structure Photography
- B.5 June 1991 Rainfall Hyetographs
- B.6 June 1991 Albion Park Stage Record
- B.7 June 1991 Princes Highway Stage Record
- B.8 Albion Park(Sunnybank) Rating Curve
- B.9 Princes Highway Rating Curve
- B.10 June 1991 Flood Photography
- B.11 June 1991 Recorded Flood Levels

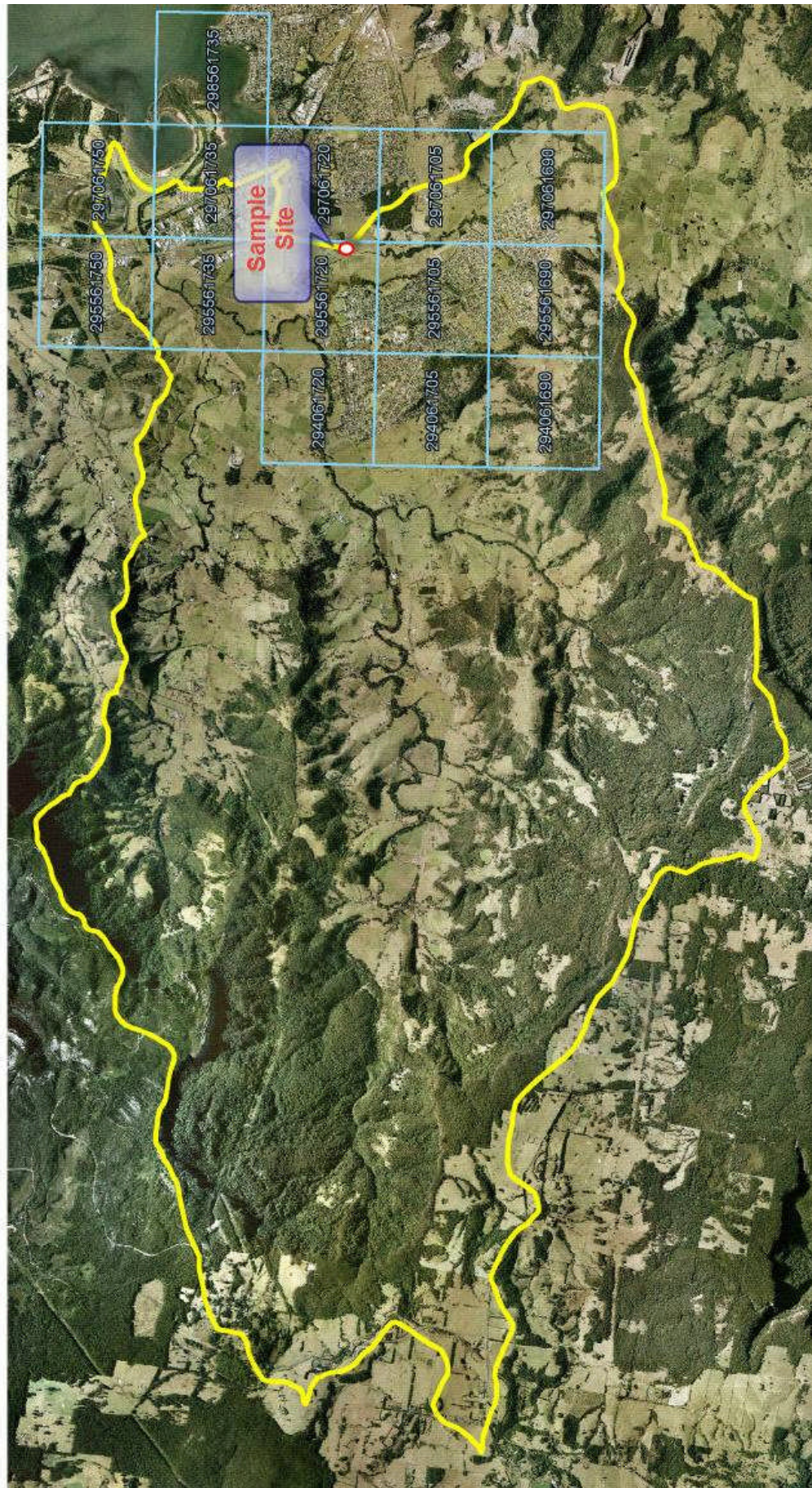
B

B

B

B

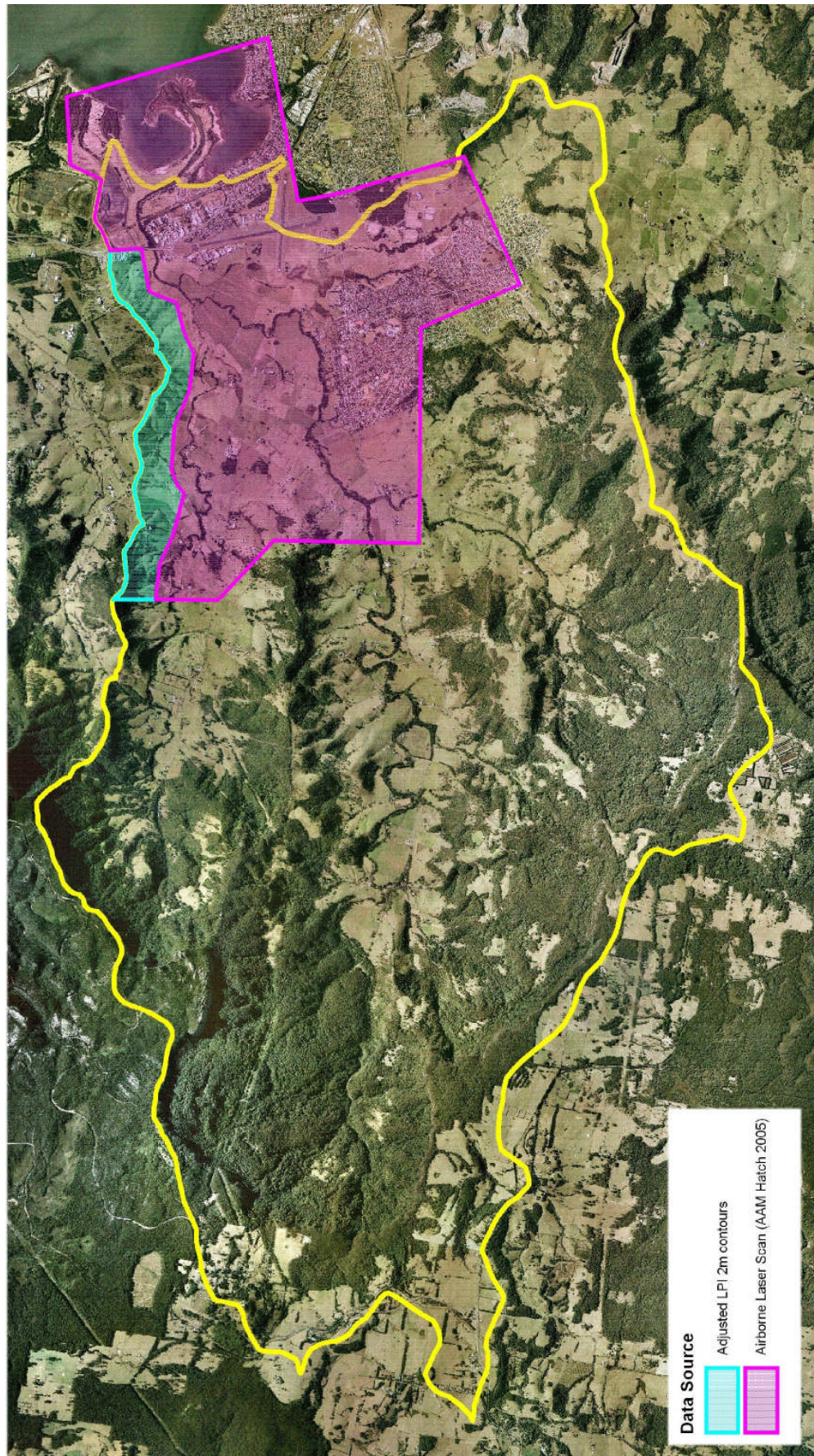
APPENDIX B



APPENDIX B1.1. AERIAL PHOTOGRAPHY - COVERAGE



APPENDIX B1.2. AERIAL PHOTOGRAPHY - SAMPLE



APPENDIX B2. ALS SURVEY DATA



Macquarie Rivulet D/S Illawarra Rail Bridge (Feb 2007)



Macquarie Rivulet D/S Princes Highway Road Bridge (Feb 2007)

APPENDIX B3. STREAM PHOTOGRAPHY



Frazers Creek D/S Illawarra Highway (Feb 2007)



Town Creek D/S Illawarra Highway (Feb 2007)

APPENDIX B3. STREAM PHOTOGRAPHY (ctd)



Frazers Creek West D/S Tongarra Rd (Feb 2007)



Frazers Creek Central D/S Tongarra Rd (Feb 2007)

APPENDIX B3. STREAM PHOTOGRAPHY (ctd)



Frazers Creek East D/S Tongarra Rd (Feb 2007)



Albion Creek D/S Princes Highway (Feb 2007)



Albion Creek D/S Shearwater Drive (Feb 2007)

APPENDIX B3. STREAM PHOTOGRAPHY (ctd)