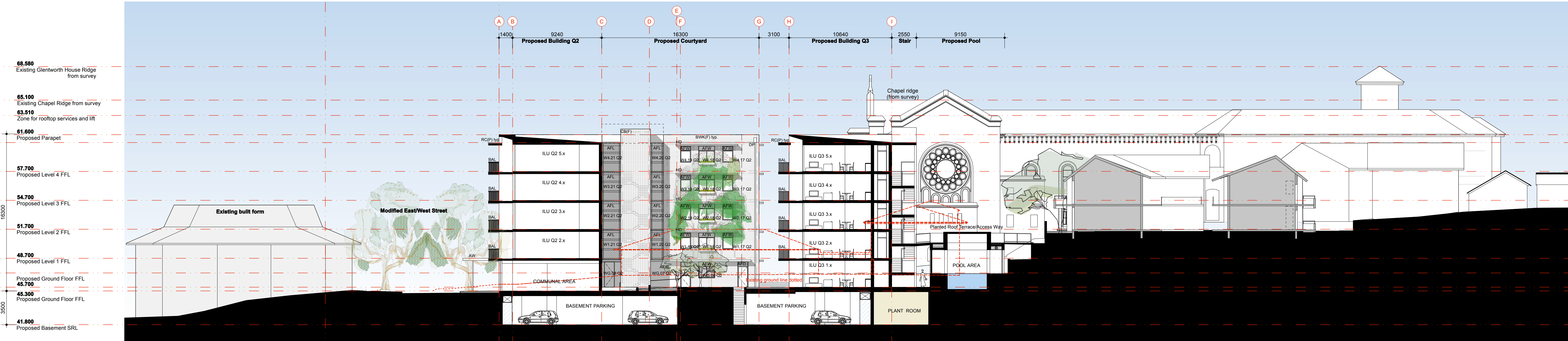
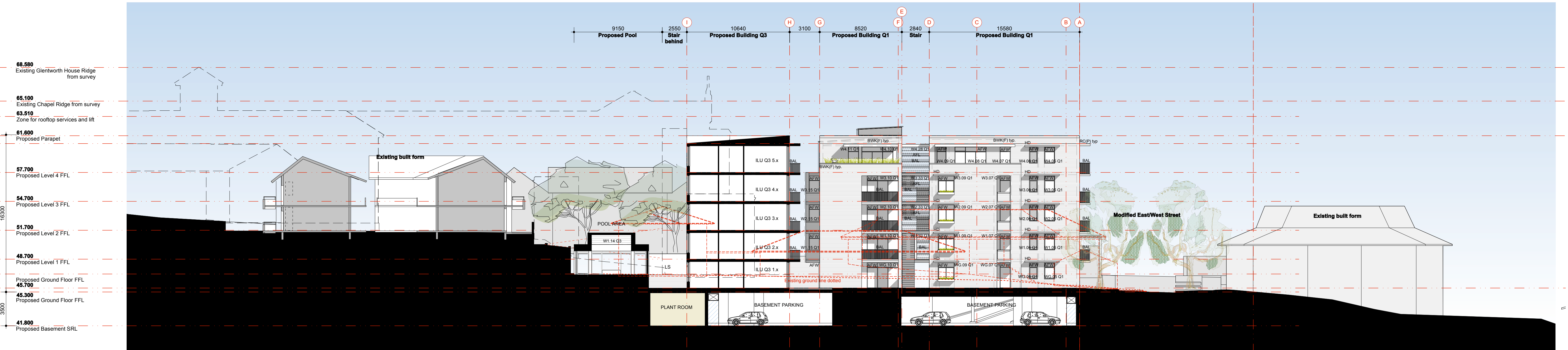


MATERIALS LEGEND	
AFL -	Aluminium Framed Louvre
AFW -	Aluminium Framed Window
AW -	Awning Structure
BAL -	Balustrade (Timber/Metal composite)
BWK (R) -	Brickwork (Rendered)
BWK (F) -	Brickwork (Face Brickwork. Combination of different bonds)
CB(F) -	Masonry (Bond pattern or similar)
DP -	Downpipe
HR -	Handrail
HD -	Shading Hood
LS -	New landscaped area to Landscape Architect's details
OSD -	Onsite water detention tank
RC (P) -	Reinforced Concrete (Paint Finish)
RC (O) -	Reinforced Concrete (Off-form Finish)
RF -	Roof Flashing
RS -	Roof Sheeting



1

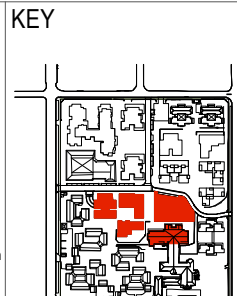
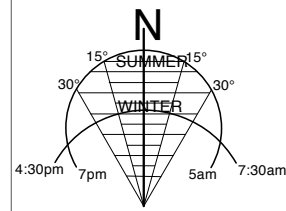
Section - South/North  
Scale 1:200 @ A1



2

Section North/South  
Scale 1:200 @ A1

EXHIBITION COPY



REV.	DATE	AMENDMENTS	REV.	DATE	AMENDMENTS
A	07/05/2009	For Client Review Only	J	05/03/2010	STAGE 1 VILLAGE GREEN DEVELOPMENT
B	27/05/2009	For Client Review Only			
C	08/07/2009	Issued For Client Review Only			
D	14/08/2009	For Coordination Purposes Only			
E	31/08/2009	For Coordination Purposes Only			
F	01/09/2009	For Coordination Purposes Only			
G	04/09/2009	For Coordination Purposes Only			
H	09/09/2009	For Client Review Only			

**STRUCTURAL ENGINEER**  
ROBERT BIRD GROUP  
Level 5, 9 Castlereagh Street  
Sydney NSW 2000  
T: (02) 6246 3200 F: (02) 6246 3201  
E: Paul.Austin@robertbird.com.au

**ELECTRICAL ENGINEER**  
JIM HATZ & ASSOCIATES  
Level 1, 15 Arthur Street  
St Leonards NSW 2065  
T: (02) 9437 1000 F: (02) 9437 1020  
E: enquiries@jimhaz.com

**HYDRAULIC ENGINEER**  
WHIPPS WOOD CONSULTING  
Lwr Gnd, 48 Arthur Street  
Mascot NSW 2020  
T: (02) 9523 9444 F: (02) 6246 3201  
E: AWHipps@wwc.net.au

**LANDSCAPE ARCHITECTURE**  
JILA PTY LTD  
STUDIO 5, 15, 88-72 Wentworth Avenue  
Surry Hills NSW 2010  
T: (02) 9212 6957 F: (02) 9281 3171  
E: Jila@jila.net.au

**SURVEYOR**  
LOCKLEY LAND TITLE SOLUTIONS  
19 Missy Street  
Glenfield NSW 2057  
T: (02) 9479 6077 F: (02) 9479 7143  
E: info@lockley.com.au

**CIVIL ENGINEER**  
ROBERT BIRD GROUP  
Level 5, 9 Castlereagh Street  
Sydney NSW 2000  
T: (02) 6246 3200 F: (02) 6246 3201  
E: Laurence.Melville@robertbird.com.au

**HERITAGE CONSULTANT**  
GRAHAM BROOKS & ASSOCIATES  
71 York Street  
Sydney NSW 2000  
T: (02) 9398 8800 F: (02) 9398 8711  
E: Graham.Brooks@gbheritage.com

**BCA CONSULTANT**  
BCA LOGIC  
Level 17/17-23 Archer Street  
Cherrybrook NSW 2067  
T: (02) 9411 5360 F: (02) 9411 1520  
E: info@bcalogic.com.au

**ACCESS CONSULTANT**  
ACCESS ACCESSIBILITY SOLUTIONS  
467 Beauchamp Road  
Marrickville NSW 2204  
T: (02) 9661 1945 F: (02) 9661 1982  
E: mark@accesslogicsolutions.com

**TRAFFIC CONSULTANT**  
MCLAREN TRAFFIC  
5 Jabiru Place,  
Woronora Heights NSW 2233  
T: (02) 9545 5161 F: (02) 9545 5161  
E: mclaren@mcclaren.com.au

**MECHANICAL ENGINEER**  
ENGINEERING PARTNERS  
16 Northwood Road  
Northwood NSW 2066  
T: (02) 9428 4322 F: (02) 9427 2712  
E: info@engpartners.com.au

**Acoustic Consultant**  
ACOUSTIC LOGIC  
9 Sarah Street  
Mascot NSW 2020  
T: (02) 8338 9886 F: (02) 8338 9399  
E: enquiries@acousticlogic.com.au

**hill thalis**  
ARCHITECTURE + URBAN PROJECTS PTY LTD  
LEVEL 5, 68-72 Wentworth Ave  
Surry Hills NSW 2010 Australia  
T 02 9211 6276 F 02 9281 3171  
E admin@hillthalis.com.au  
www.hillthalis.com.au

CLIENT  
**bevvum**  
LIVING

JOB  
**VILLAGE GREEN,  
CARDINAL FREEMAN VILLAGE**

PACKAGE  
**STAGE 1 VILLAGE GREEN  
DEVELOPMENT**

DRAWING TITLE		CHECKED		SCALE		REV
Sections 2		PT		1:200@A1		
DRAWN	AR/MO					J
DATE CREATED	14.04.09	DRAWING NO.	A2.32			