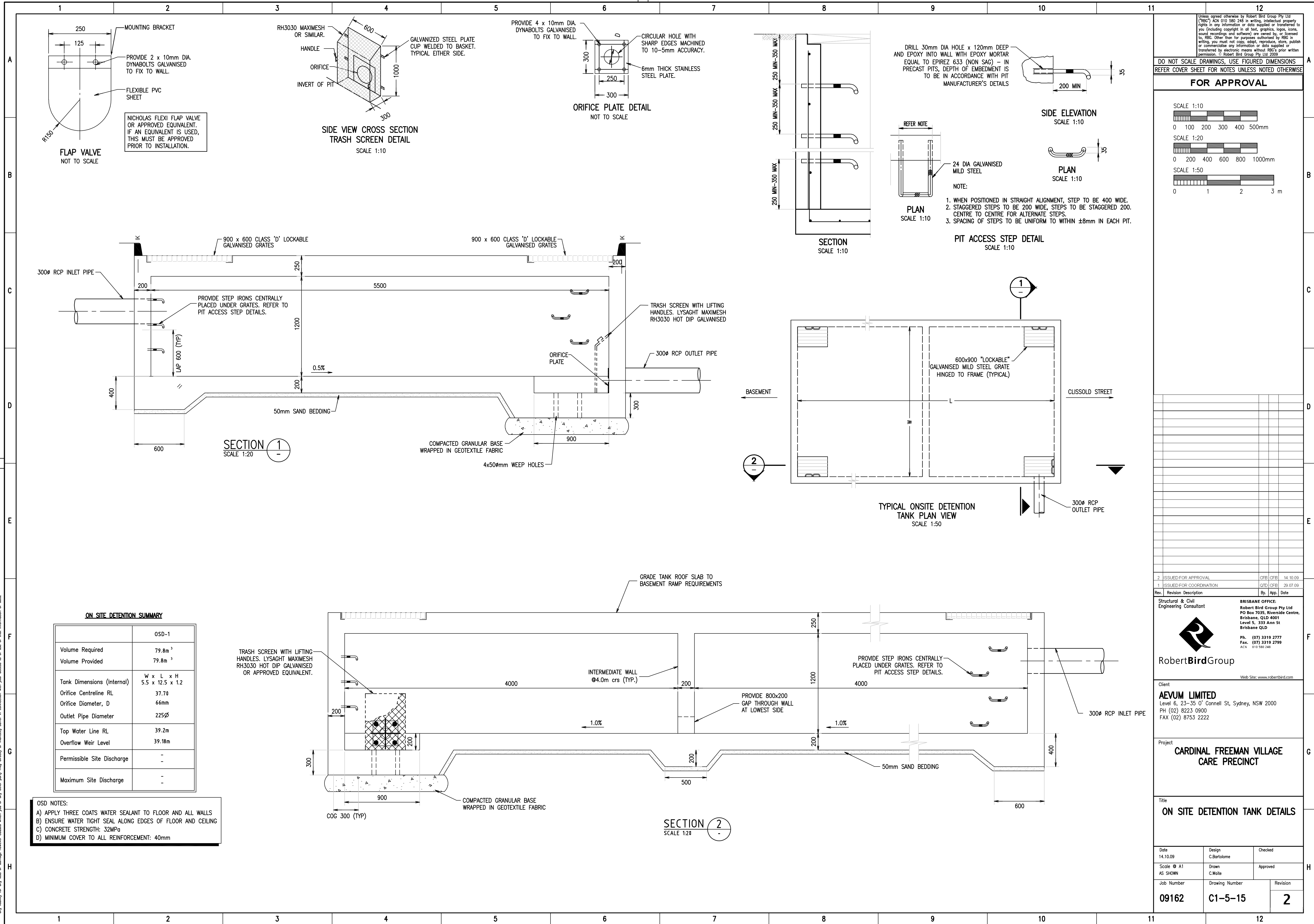






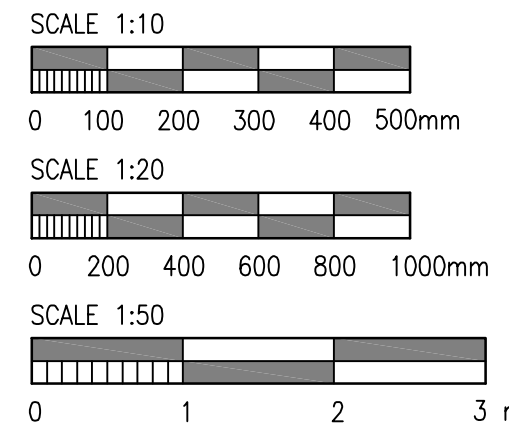
Disclaimer: Robert Brock Group Pty Ltd AON 010 580 248 and its related entities (RBE) do not warrant the accuracy, currency or completeness of any information or data they supply or transfer by electronic means. RBE will not be liable for any loss or damage you or any other party incurs as a result of acting in reliance on information or data supplied or transferred by electronic means and you release RBE from any liability for any loss or damage however caused which you or any other party may directly or indirectly suffer in connection with your access to or use of that information or data.



Unless agreed otherwise by Robert Bird Group Pty Ltd (RBG) ACN 010 580 248 in writing, intellectual property rights in any information or data supplied or transferred to you (including copyright in all text, graphics, logos, icons, sound recordings and software) are owned by, or licensed to, RBG. Other than for purposes authorised by RBG in writing, you must not copy, adapt, reproduce, store, publish or commercialise any information or data supplied or transferred by electronic means without RBG's prior written permission. © Robert Bird Group Pty Ltd 2009

DO NOT SCALE DRAWINGS, USE FIGURED DIMENSIONS
REFER COVER SHEET FOR NOTES UNLESS NOTED OTHERWISE

FOR APPROVAL



2 ISSUED FOR APPROVAL CFB CFB 14.10.09

1 ISSUED FOR COORDINATION QTD CFB 29.07.09

Rev. Revision Description By. App. Date

Structural & Civil Engineering Consultant



RobertBirdGroup

BRISBANE OFFICE:
Robert Bird Group Pty Ltd
PO Box 7035, Riverside Centre,
Brisbane, QLD 4001
Level 5, 333 Ann St
Brisbane QLD
Ph. (07) 3319 2777
Fax. (07) 3319 2799
ACN 010 580 248

Web Site: www.robertbird.com

Client
AEVUM LIMITED
Level 6, 23-35 O'Connell St, Sydney, NSW 2000
PH (02) 8223 0900
FAX (02) 8753 2222

Project
CARDINAL FREEMAN VILLAGE CARE PRECINCT

ON SITE DETENTION TANK DETAILS

Date 14.10.09	Design C.Bartolome	Checked
Scale AS SHOWN	Drawn C.Waite	Approved
Job Number 09162	Drawing Number C1-5-15	Revision 2

CARDINAL FREEMAN VILLAGE
VILLAGE GREEN PRECINCT
Victoria Street, Ashfield
CIVIL WORKS DRAWINGS

Sheet List Table	
Sheet No.	Sheet Title
C2-0-00	COVER SHEET AND DRAWING LIST – VILLAGE GREEN PRECINCT
C2-0-05	STORMWATER DRAINAGE CONCEPT PLAN – VILLAGE GREEN PRECINCT
C2-0-10	CIVIL WORKS DETAILS
C2-1-01	EROSION AND SEDIMENT CONTROL PLAN AND DETAILS
C2-5-10	STORMWATER WORKS DETAILS

Disclaimer: Robert Bird Group Pty Ltd AON 010 580 248 and its related entities (RBG) do not warrant the accuracy, currency or completeness of any information or data they supply or transfer by electronic means. You are responsible for verifying that any information or data supplied or transferred by electronic means matches the information or data on the corresponding PDF or BMR version issued by RBG. RBG does not take any responsibility for any loss or damage you or any other party incur as a result of acting in reliance on any information or data supplied or transferred by electronic means and you release RBG from any such liability.

Unless agreed otherwise by Robert Bird Group Pty Ltd
 ("RBG") ACN 010 580 248 in writing, intellectual property
 rights in any information or data supplied or transferred to
 you (including copyright in all text, graphics, logos, icons,
 sound recordings and software) are owned by, or licensed to,
 RBG. Other than for purposes authorised by RBG in
 writing, you must not copy, adapt, reproduce, store, publish
 or commercialise any information or data supplied or
 transferred by electronic means without RBG's prior written
 permission. © Robert Bird Group Pty Ltd 2009

DO NOT SCALE DRAWINGS, USE FIGURED DIMENSIONS

REFER COVER SHEET FOR NOTES UNLESS NOTED OTHERWISE

FOR APPROVAL

[illegible]

1	ISSUED FOR COORDINATION	QTD	CFB	11.09.09
Rev.	Revision Description	By.	App.	Date

Structural & Civil
Engineering Consultant

BRISBANE OFFICE:
Robert Bird Group Pty Ltd

Robert**Bird**Group

BRISBANE OFFICE:
Robert Bird Group Pty Ltd
PO Box 7035, Riverside Centre,
Brisbane, QLD 4001
Level 5, 333 Ann St
Brisbane QLD

Ph. (07) 3319 2777
Fax. (07) 3319 2799
ACN 010 580 248

Ph. (07) 3319 2777
Fax. (07) 3319 2799
ACN 010 580 248

Web Site: www.robertbird.com

Client

AEVUM LIMITED

Level 6, 23–35 O' Connell St, Sydney, NSW 2000

PH (02) 8223 0900

FAX (02) 8753 2222

Project

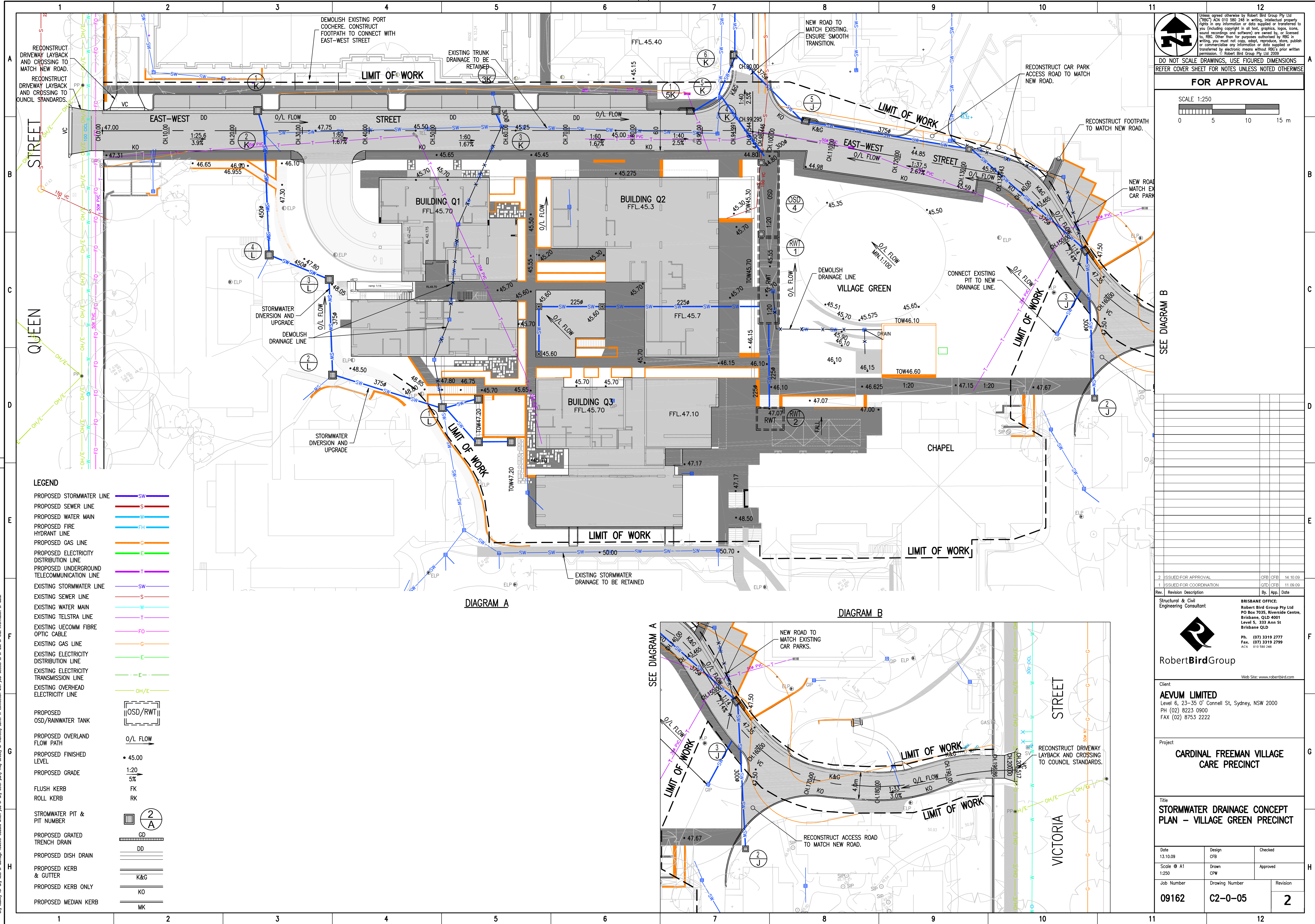
CARDINAL FREEMAN VILLAGE
VILLAGE GREEN PRECINT

Title

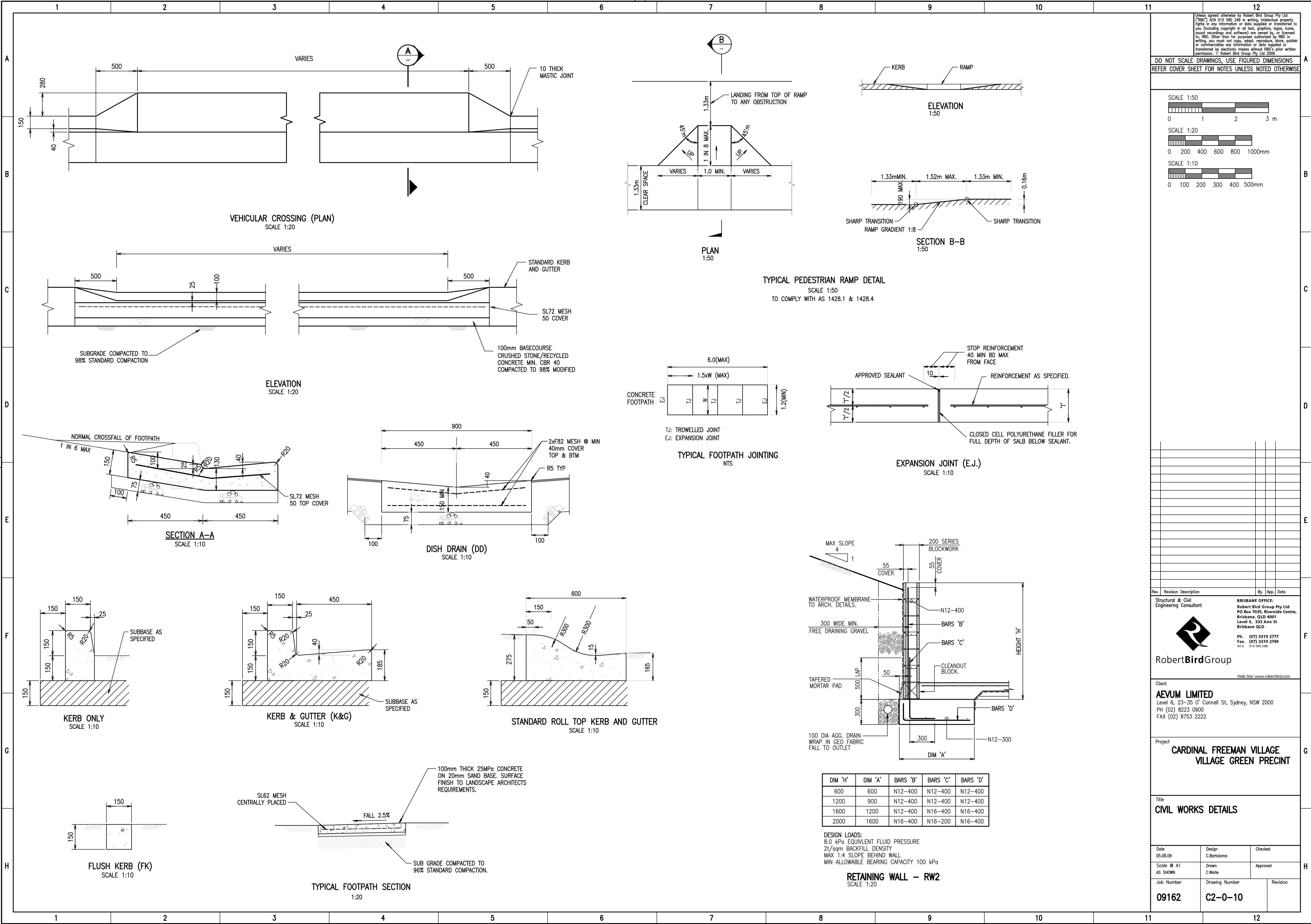
COVER SHEET AND DRAWING LIST —
VILLAGE GREEN PRECINCT

Date 11.09.09	Design C.Bartolome	Checked
Scale \otimes A1 NA	Drawn C.Waite	Approved
Job Number 09162	Drawing Number C2-0-00	Revision 2

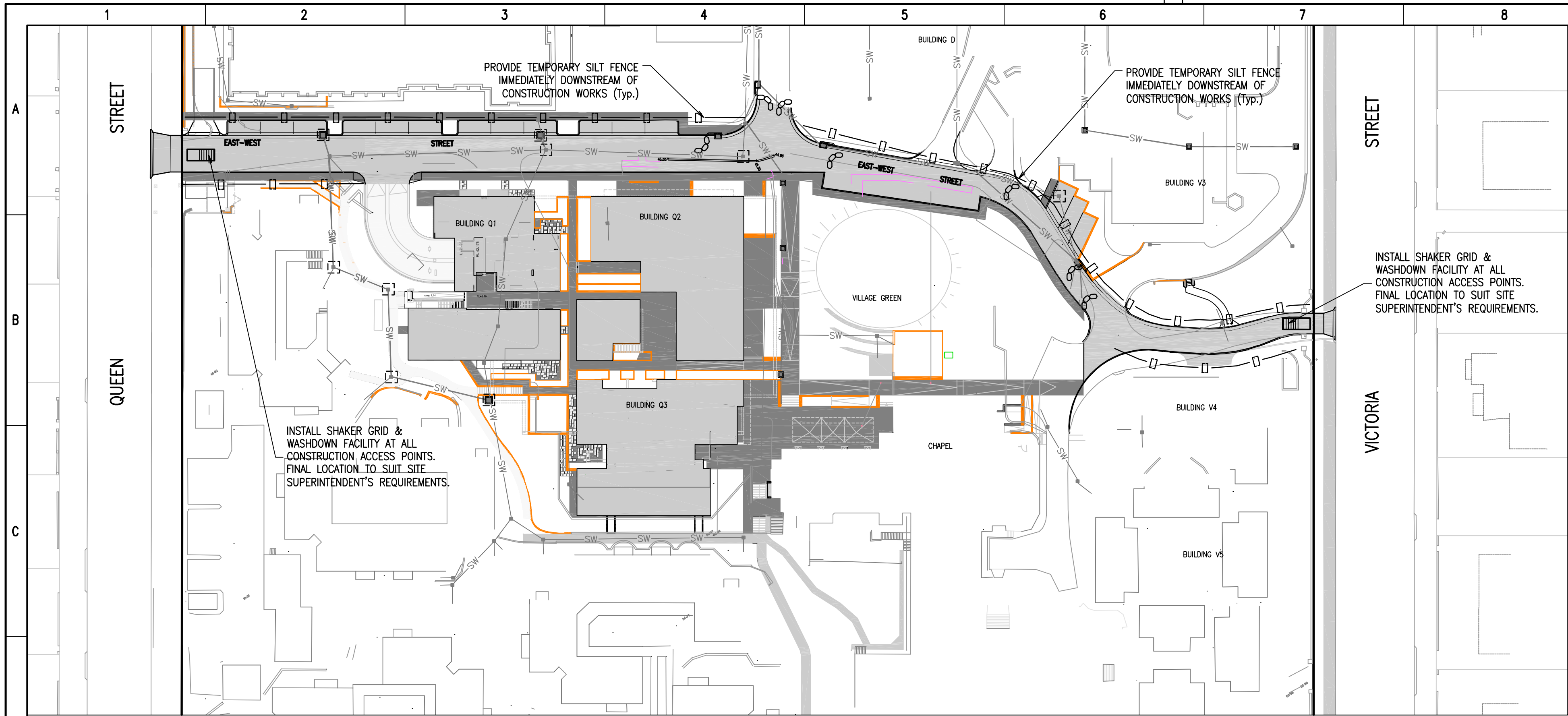
Disclaimer: Robert Bird Group Pty Ltd (RBG) and its related entities (RBG) do not warrant the accuracy, currency, or completeness of any information or data they supply or transfer by electronic means. You are responsible for verifying that any information or data supplied or transferred by electronic means satisfies the information or data requirements of your project. RBG makes no representation or warranty, whether expressed or implied, that the information or data supplied or transferred by electronic means is accurate, current, or complete. You are responsible for any loss or damage, however caused, which you or any other party may directly or indirectly suffer in connection with your access to or use of that information or data.



Disclaimer: Robert Bird Group Pty Ltd ACN 010 580 248 and its related entities (RBG) do not warrant the accuracy, currency, or completeness of any information or data they supply or transfer by electronic means. You are responsible for verifying that any information or data supplied or transferred by electronic means matches the information on data on the corresponding paper or other version issued by RBG. RBG shall not be liable for any loss or damage, however caused, which you or any other party may directly or indirectly suffer in connection with your access to or use of that information or data.



Disclaimer: Robert Bird Group Pty Ltd (RBG) and its related entities (RBG) do not warrant the accuracy, currency, or completeness of any information or data they supply or transfer by electronic means. You are responsible for verifying that any information or data supplied or transferred by electronic means satisfies the information or data in the corresponding PDF or other version issued by RBG. RBG shall not be liable for any loss or damage, however caused, which you or any other party may directly or indirectly suffer in connection with your access to or use of that information or data.



EROSION AND SEDIMENT CONTROL PLAN

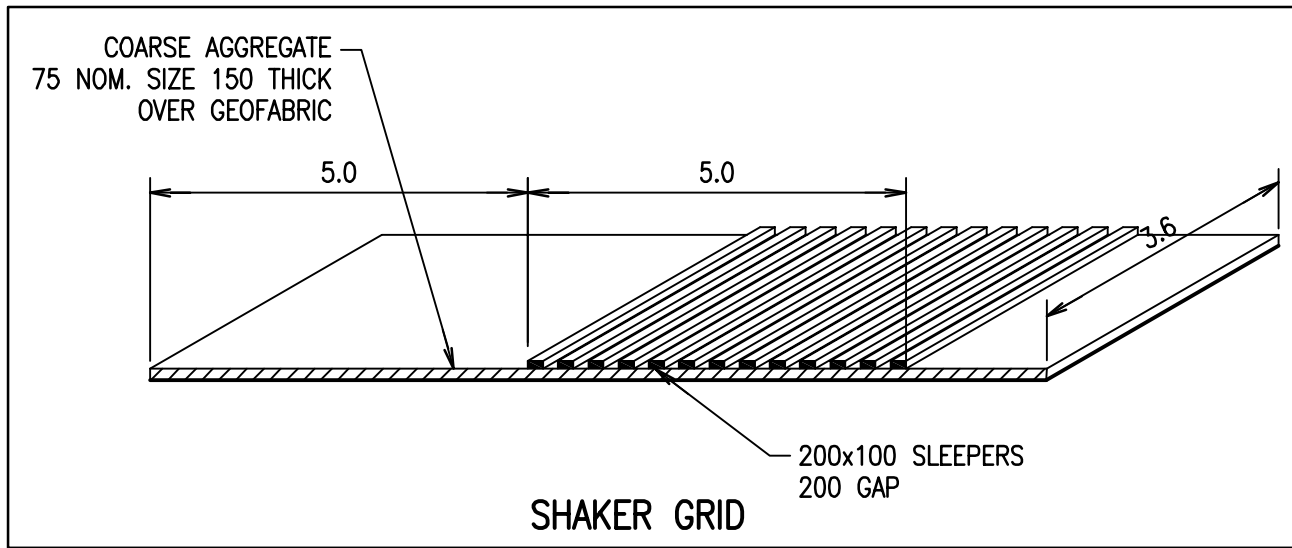
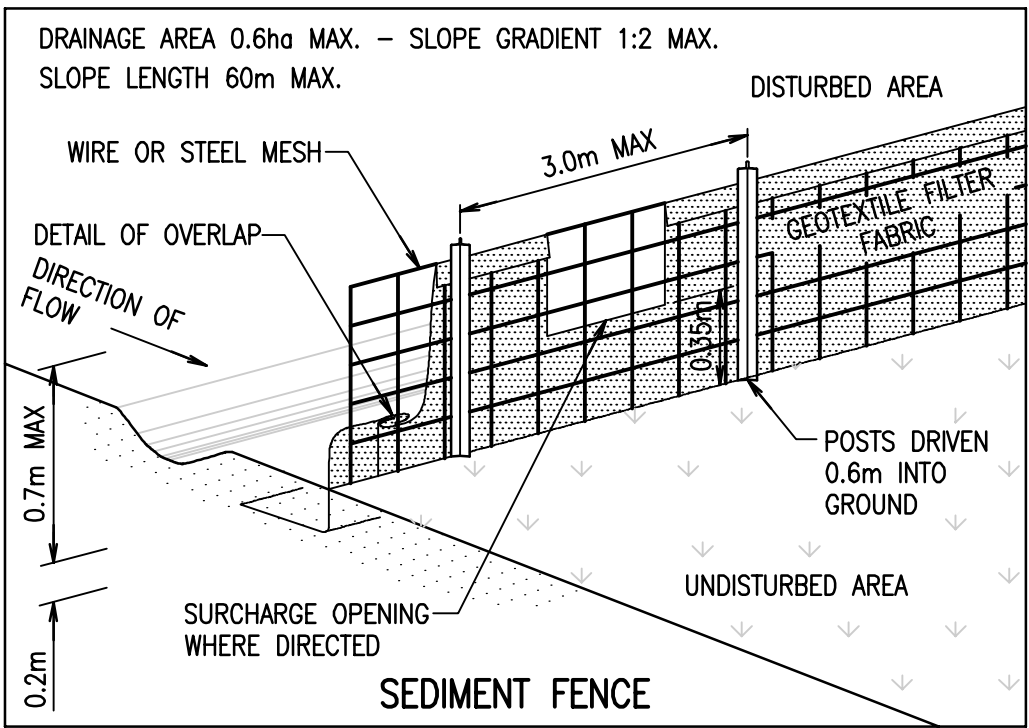
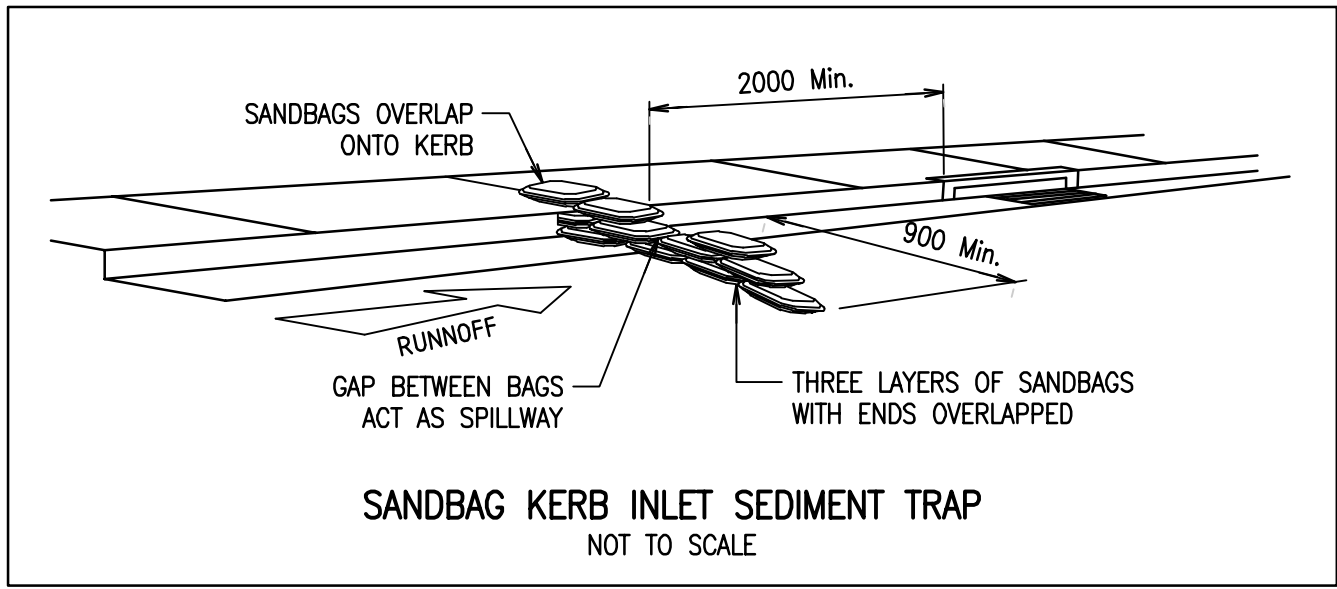
1:500

EROSION AND SEDIMENT CONTROL NOTES

1. ALL WORK SHALL BE GENERALLY CARRIED OUT IN ACCORDANCE WITH:
 - (A) LOCAL AUTHORITY REQUIREMENTS,
 - (B) EPA - POLLUTION CONTROL MANUAL FOR URBAN STORMWATER,
 - (C) DEPARTMENT OF CONSERVATION AND LAND MANAGEMENT MANUAL-"URBAN EROSION & SEDIMENT CONTROL".
2. EROSION AND SEDIMENT CONTROL DRAWINGS AND NOTES ARE PROVIDED FOR THE WHOLE OF THE WORKS. SHOULD THE CONTRACTOR STAGE THESE WORKS THEN THE DESIGN MAY REQUIRE TO BE MODIFIED. VARIATION TO THESE DETAILS MAY REQUIRE TO BE APPROVED BY THE RELEVANT AUTHORITIES. THE EROSION AND SEDIMENT CONTROL PLAN SHALL BE IMPLEMENTED AND ADOPTED TO MEET THE VARYING SITUATIONS AS WORK ON SITE PROGRESSES.
3. MAINTAIN ALL EROSION AND SEDIMENT CONTROL DEVICES TO THE SATISFACTION OF THE SUPERINTENDENT AND THE LOCAL AUTHORITY.
4. WHEN STORMWATER PITS ARE CONSTRUCTED PREVENT SITE RUNOFF ENTERING THE PITS UNLESS SILT FENCES ARE ERECTED AROUND PITS.
5. MINIMIZE THE AREA OF SITE BEING DISTURBED AT ANY ONE TIME.
6. PROTECT ALL STOCKPILES OF MATERIALS FROM SCOUR AND EROSION. DO NOT STOCKPILE LOOSE MATERIAL IN ROADWAYS, NEAR DRAINAGE PITS OR IN WATERCOURSES.
7. ALL SOIL AND WATER CONTROL MEASURES ARE TO BE PUT BACK IN PLACE AT THE END OF EACH WORKING DAY, AND MODIFIED TO BEST SUIT SITE CONDITIONS.
8. CONTROL WATER FROM UPSTREAM OF THE SITE SUCH THAT IT DOES NOT ENTER THE DISTURBED SITE.
9. ALL CONSTRUCTION VEHICLES SHALL ENTER AND EXIT THE SITE VIA THE APPROVED CONSTRUCTION ENTRY/EXIT ROUTE.
10. ALL VEHICLES LEAVING THE SITE SHALL BE CLEANED AND INSPECTED BEFORE LEAVING.
11. MAINTAIN ALL STORMWATER PITS AND PITS CLEAR OF DEBRIS AND SEDIMENT. INSPECT STORMWATER SYSTEM AND CLEAN OUT AFTER EACH STORM EVENT.
12. CLEAN OUT ALL EROSION AND SEDIMENT CONTROL DEVICES AFTER EACH STORM EVENT.
13. ALL DISTURBED AREAS SHALL BE REVEGETATED AS SOON AS THE RELEVANT WORKS HAVE BEEN COMPLETED.

SEQUENCE OF WORKS

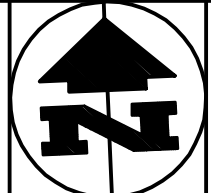
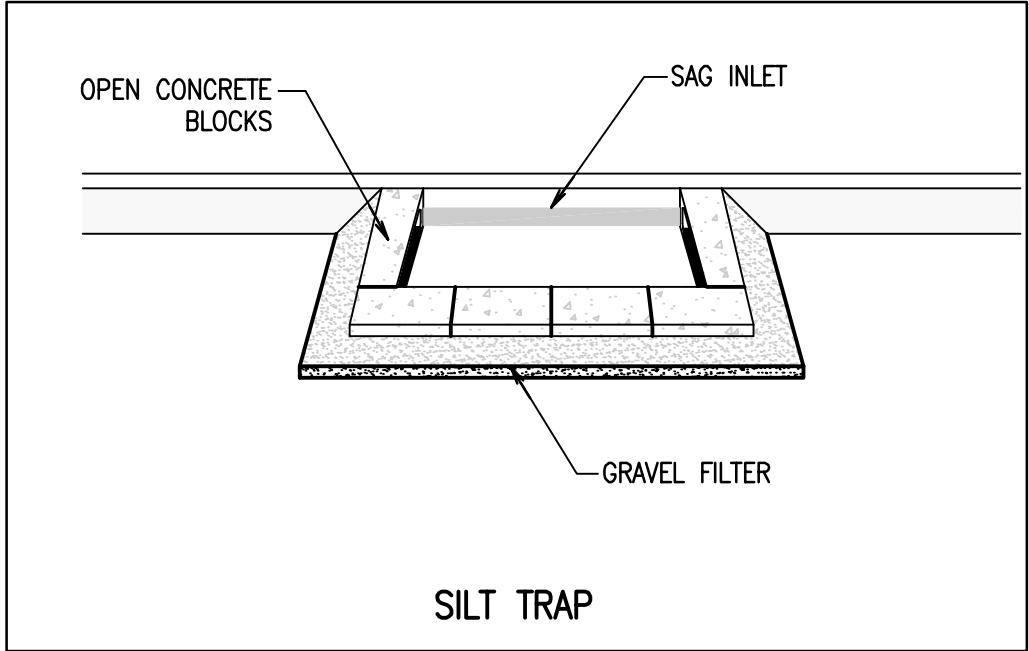
1. PRIOR TO COMMENCEMENT OF EXCAVATION THE FOLLOWING SOIL MANAGEMENT DEVICES MUST BE INSTALLED.
 - 1.1. CONSTRUCT SILT CONTROL DEVICES BELOW THE SITE AND ACROSS ALL POTENTIAL RUNOFF SITES.
 - 1.2. CO-ORDINATE CONSTRUCTION ENTRY/EXIT ROUTES WITH PROJECT MANAGER. ARRANGE SUITABLE LOCATION FOR THE INSPECTION OF TRUCKS PRIOR TO LEAVING SITE AND DIVERT RUNOFF TO SUITABLE CONTROL SYSTEM.
 - 1.3. CONSTRUCT MEASURES TO DIVERT UPSTREAM FLOWS INTO EXISTING STORMWATER SYSTEM.
 - 1.4. PROVIDE SANDBAG SEDIMENT TRAPS UPSTREAM OF EXISTING PITS.
 - 1.5. LOCATE A 1.8 METRE CHAIN WIRE FENCE AROUND THE BOUNDARIES AND ATTACH HESSIAN CLOTH TO IT ON THE WINDWARD SIDE (TIES AT THE TOP CENTER AND BOTTOM AND AT 1 METRE INTERVALS).
2. DISTURBED AREAS ARE REGULARLY WATERED TO REDUCE DUST POLLUTION.
3. CONSTRUCT GEOTEXTILE FILTER PIT SURROUND AROUND ALL PROPOSED PITS AS THEY ARE CONSTRUCTED.
4. ON COMPLETION OF PAVEMENT PROVIDE SAND BAG KERB INLET SEDIMENT TRAPS AROUND PITS.
5. PROVIDE AND MAINTAIN A STRIP OF TURF ON BOTH SIDES OF ALL ROADS AFTER THE CONSTRUCTION OF KERBS.



INSTALLATION

1. EXCAVATE A TRENCH 200mm DEEP.
2. DRIVE POSTS 500-700mm INTO GROUND AT A MAXIMUM SPACING OF 3.0m CENTRES.
3. PLACE AND FIX SUPPORT MESH (F52) TO POST.
4. LAY BIDIM GEOFABRIC (SF 2000) AGAINST THE SUPPORT MESH AND FIX BY TIE WIRE, STAPLES OR HOG RINGS.
5. PLACE BIDIM IN TRENCH AND BACKFILL WITH SOIL.

NOTE:
POSITION OF SEDIMENT FENCE AS DIRECTED BY SUPERINTENDENT. FENCE TO REMAIN IN PLACE UNTIL EXCAVATION IS BELOW FOOTPATH LEVEL. PROVIDE 2m x 2m TURFED AREA ON DOWNSTREAM SIDE OF FENCE AT SURCHARGE OPENINGS.

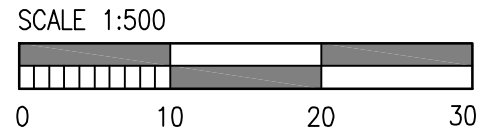


Unless agreed otherwise by Robert Bird Group Pty Ltd (RBG) and its related entities (RBG) in writing, intellectual property rights in any information or data supplied or transferred to you (including copyright in all text, graphics, logos, icons, sound recordings and software) are owned by, or licensed to, RBG. Other than for purposes authorised by RBG in writing, you must not copy, adapt, reproduce, store, publish or commercialise any information or data supplied or transferred by electronic means without RBG's prior written permission. © Robert Bird Group Pty Ltd 2009

DO NOT SCALE DRAWINGS, USE FIGURED DIMENSIONS

REFER COVER SHEET FOR NOTES UNLESS NOTED OTHERWISE

FOR APPROVAL



LEGEND

- DENOTES SEDIMENT FENCE
- INSTALL TEMPORARY SILT TRAPS AROUND PITS UNTIL SURROUNDING PAVEMENTS HAVE BEEN COMPLETED.
- PROVIDE TEMPORARY SANDBAGS AROUND PITS:
 1. AFTER PAVEMENT WORKS IF CONSTRUCTION IS STILL ONGOING UPSTREAM.
 2. TO EXISTING GRATED PITS DOWNSTREAM OF CONSTRUCTION WORKS.
- ▨ SHAKER GRID AND WASH DOWN FACILITY

1 ISSUED FOR COORDINATION QTD CFB 11.09.09

Rev. Revision Description By. App. Date

Structural & Civil Engineering Consultant

BRISBANE OFFICE:
Robert Bird Group Pty Ltd
PO Box 7035, Riverside Centre,
Brisbane, QLD 4001
Level 5, 333 Ann St
Brisbane QLD

Ph. (07) 3319 2777
Fax. (07) 3319 2799
ACN 010 580 348

RobertBirdGroup

Web Site: www.robertbird.com

Client

AEVUM LIMITED
Level 6, 23-35 O'Connell St, Sydney, NSW 2000
PH (02) 8223 0900
FAX (02) 8753 2222

Project

CARDINAL FREEMAN VILLAGE CARE PRECINCT

Title

EROSION AND SEDIMENT CONTROL PLAN AND DETAILS

Date
11.09.09

Design
CB

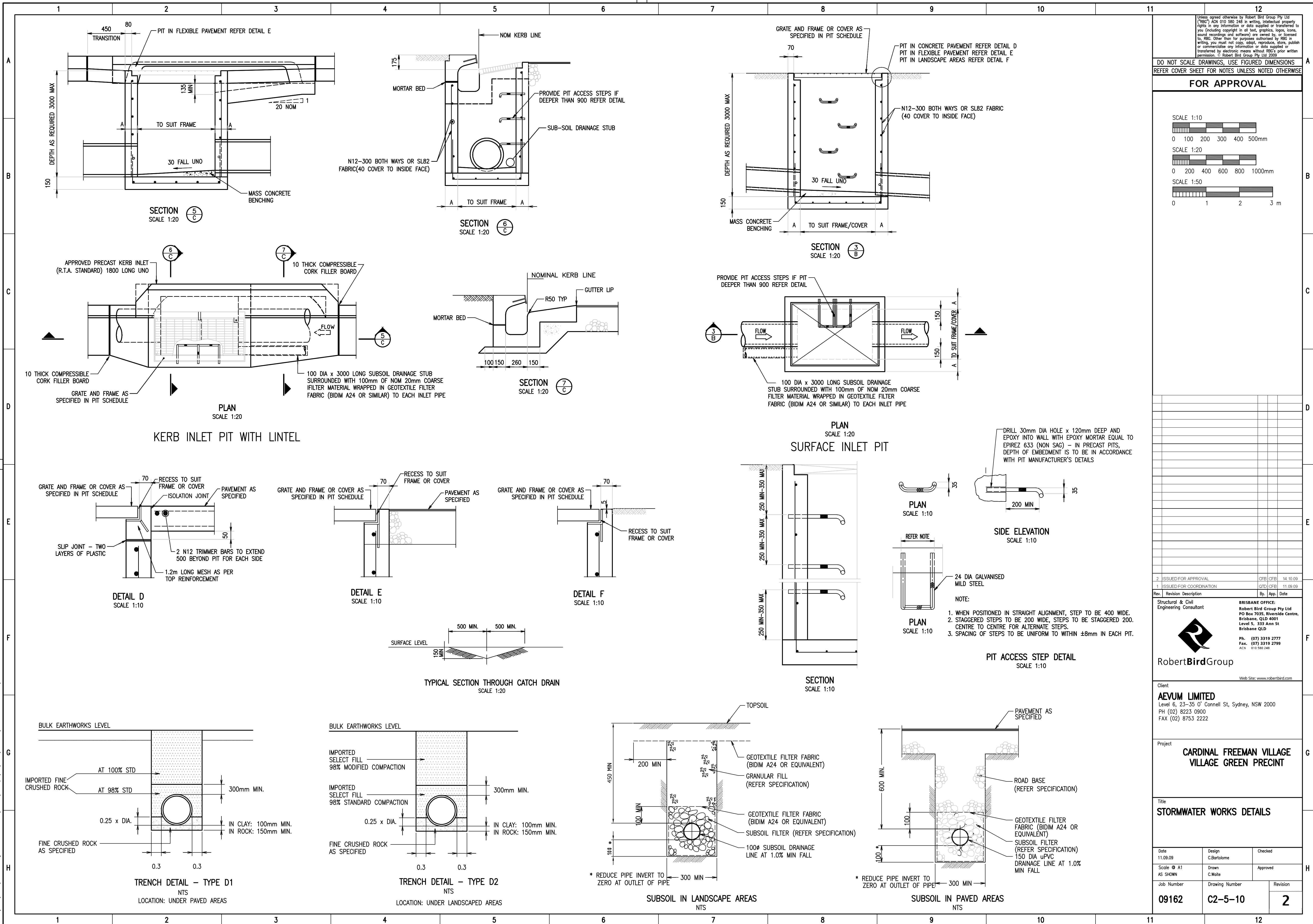
Scale
A1
1:500

Drawn
CPW

Job Number
09162

Drawing Number
C2-1-01

Revision
2




SCALE 1:10
0 100 200 300 400 500mm

SCALE 1:20
0 200 400 600 800 1000mm

SCALE 1:50
0 1 2 3

**Structural & Civil
Engineering Consultant**



BRISBANE OFFICE:
Robert Bird Group Pty Ltd
PO Box 7035, Riverside Centre
Brisbane, QLD 4001
Level 5, 333 Ann St
Brisbane QLD


Ph. (07) 3319 2777
Fax. (07) 3319 2799
ACN. 010 580 248

Web Site: www.robertbird.com

Client
AEVUM LIMITED
Level 6, 23-35 O'Connell St, Sydney, NSW 2000
PH (02) 8223 0900
FAX (02) 8753 2222

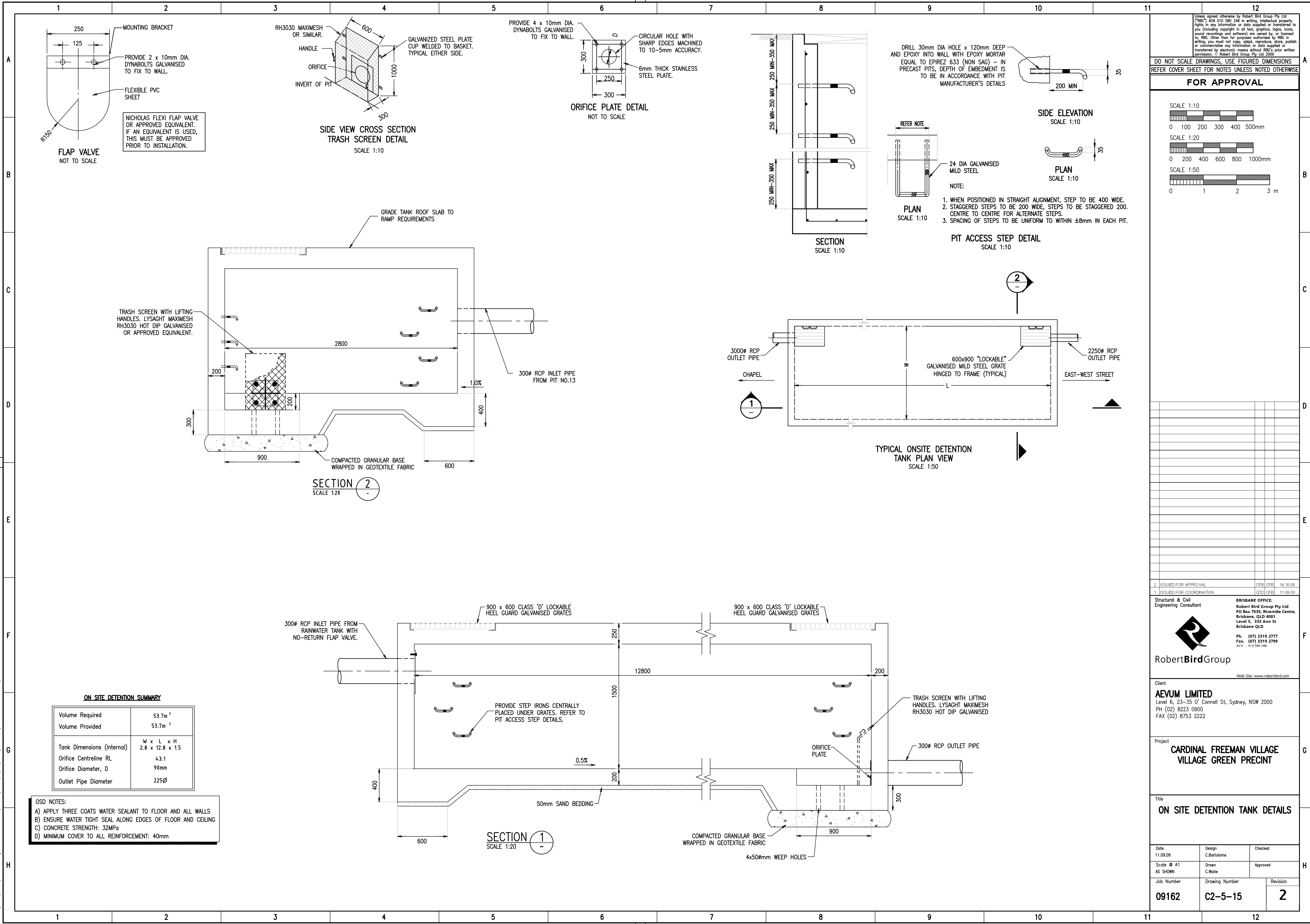
Project **CARDINAL FREEMAN VILLAGE
VILLAGE GREEN PRECINT**

Title
STORMWATER WORKS DETAILS

Date 11.09.09	Design C.Bartolome	Checked
Scale:  A1 AS SHOWN	Drawn C.Waite	Approved
Job Number	Drawing Number	Revision
09162	C2-5-10	2

Disclaimer: Robert Bird Group Pty Ltd ACN 010 580 248 and its related entities (RBG) do not warrant the accuracy, currency, or completeness of any information or data they supply or transfer by electronic means. You are responsible for verifying that any information or data supplied or transferred by electronic means is correct and for ensuring that you have obtained any necessary permissions from the relevant authorities to use the information or data. RBG shall not be liable for any loss or damage, however caused, which you or any other party may directly or indirectly suffer in connection with your access to or use of that information or data.

A1





Robert**Bird**Group

Sydney Office

Robert Bird Group Pty Ltd
ABN 67 010 580 248 ACN 010 580 248

Level 5
9 Castlereagh Street
Sydney NSW 2000
PO Box H38
Australia Square
Sydney NSW 1215
Australia

P: +61 (0) 2 8246 3200
F: +61 (0) 2 8246 3201

www.robertbird.com

Sydney

Brisbane

Melbourne

North Queensland

London