



PROJECT ID S30178
CREATED BY TO
LAST MODIFIED TO 18 12 2009

AECOM
www.aecom.com

AECOM does not warrant the accuracy or completeness of information displayed in this map and any person using it does so at their own risk. AECOM shall bear no responsibility or liability for any errors, faults, defects, or omissions in the information.



- Approximate development footprint
- Piston core sample location
- ⊕ Sediment grab sample location
- Harbour water sample location
- ⊕ Vibro core sample location

Sampling Locations

Port Kembla Port Corporation
Sediment Investigation - Part of EA
for Outer Harbour Redevelopment
Port Kembla NSW 2505

Figure
F5



PROJECT ID S30178
CREATED BY TO
LAST MODIFIED TO 18 12 2009

AECOM
www.aecom.com

AECOM does not warrant the accuracy or completeness of information displayed in this map and any person using it does so at their own risk. AECOM shall bear no responsibility or liability for any errors, faults, defects, or omissions in the information.



- Benzo(a)pyrene concentration (ug/kg) contour
- ISQG - Low concentration (430 ug/kg) contour
- Approximate development footprint
- Piston core sample location
- Sediment grab sample location
- Harbour water sample location
- Vibro core sample location

Distribution of Benzo(a)pyrene Concentrations in the Outer Harbour

Port Kembla Port Corporation
Sediment Investigation - Part of EA for Outer Harbour Redevelopment
Port Kembla NSW 2505

Figure
F6



PROJECT ID S30178
CREATED BY TO
LAST MODIFIED TO 18 12 2009

AECOM
www.aecom.com



- Flouranthene concentration (ug/kg) contour
- ISQG - Low concentration (600 ug/kg) contour
- Approximate development footprint
- Piston core sample location
- ⊕ Sediment grab sample location
- ⊕ Harbour water sample location
- ⊕ Vibro core sample location

AECOM does not warrant the accuracy or completeness of information displayed in this map and any person using it does so at their own risk. AECOM shall bear no responsibility or liability for any errors, faults, defects, or omissions in the information.

Distribution of Flouranthene Concentrations in the Outer Harbour

Port Kembla Port Corporation
Sediment Investigation - Part of EA
for Outer Harbour Redevelopment
Port Kembla NSW 2505

Figure
F7



PROJECT ID S30178
CREATED BY TO
LAST MODIFIED TO 18 12 2009

AECOM
www.aecom.com



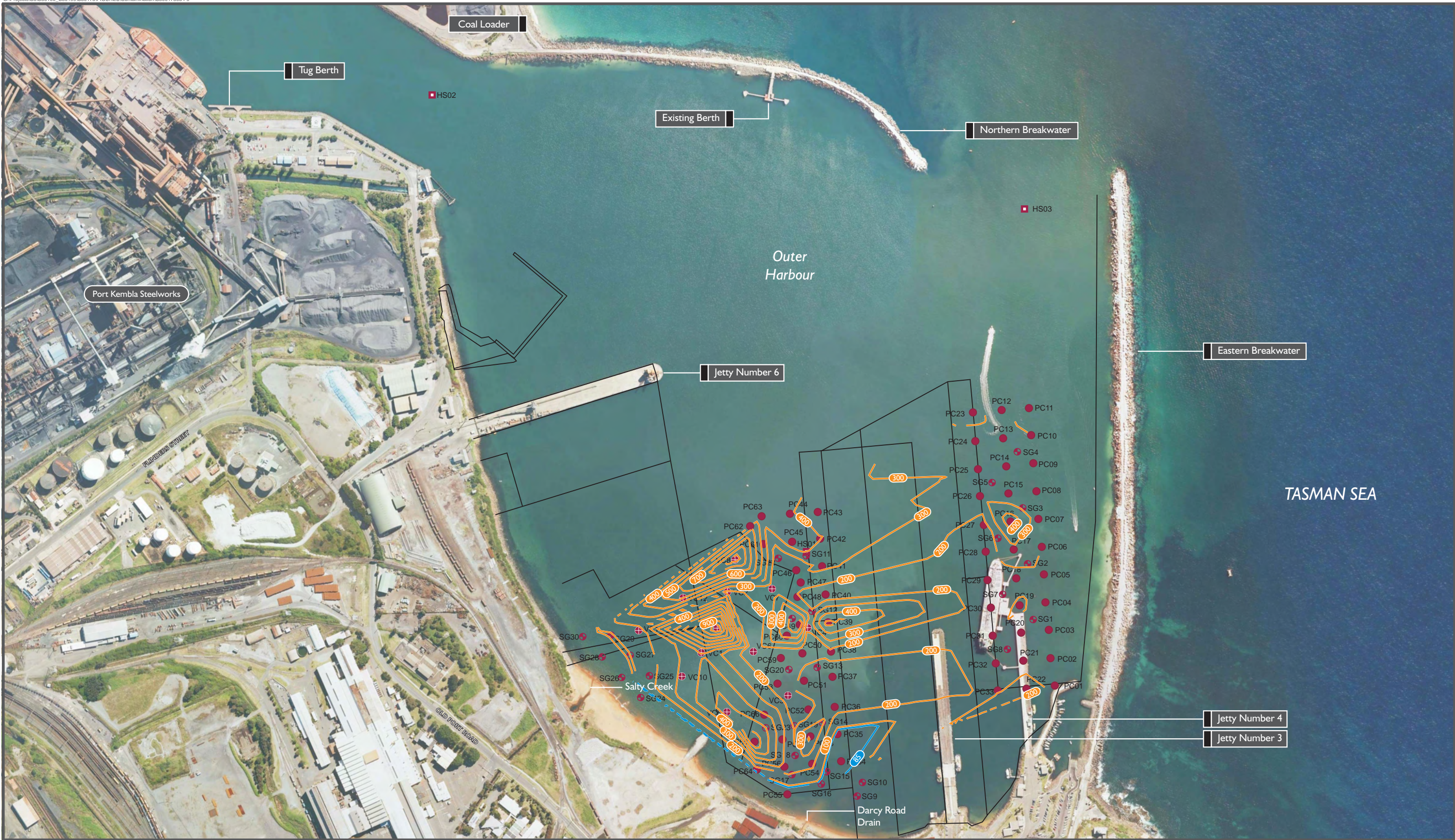
- Napthalene concentration (ug/kg) contour
- ISQG - Low concentration (160 ug/kg) contour
- Approximate development footprint
- Piston core sample location
- ⊕ Sediment grab sample location
- ⊕ Harbour water sample location
- ⊕ Vibro core sample location

AECOM does not warrant the accuracy or completeness of information displayed in this map and any person using it does so at their own risk. AECOM shall bear no responsibility or liability for any errors, faults, defects, or omissions in the information.

Distribution of Napthalene Concntrations in the Outer Harbour

Port Kembla Port Corporation
Sediment Investigation - Part of EA
for Outer Harbour Redevelopment
Port Kembla NSW 2505

Figure
F8



PROJECT ID S30178
CREATED BY TO
LAST MODIFIED TO 21 08 2009

AECOM
www.aecom.com

AECOM does not warrant the accuracy or completeness of information displayed in this map and any person using it does so at their own risk. AECOM shall bear no responsibility or liability for any errors, faults, defects, or omissions in the information.

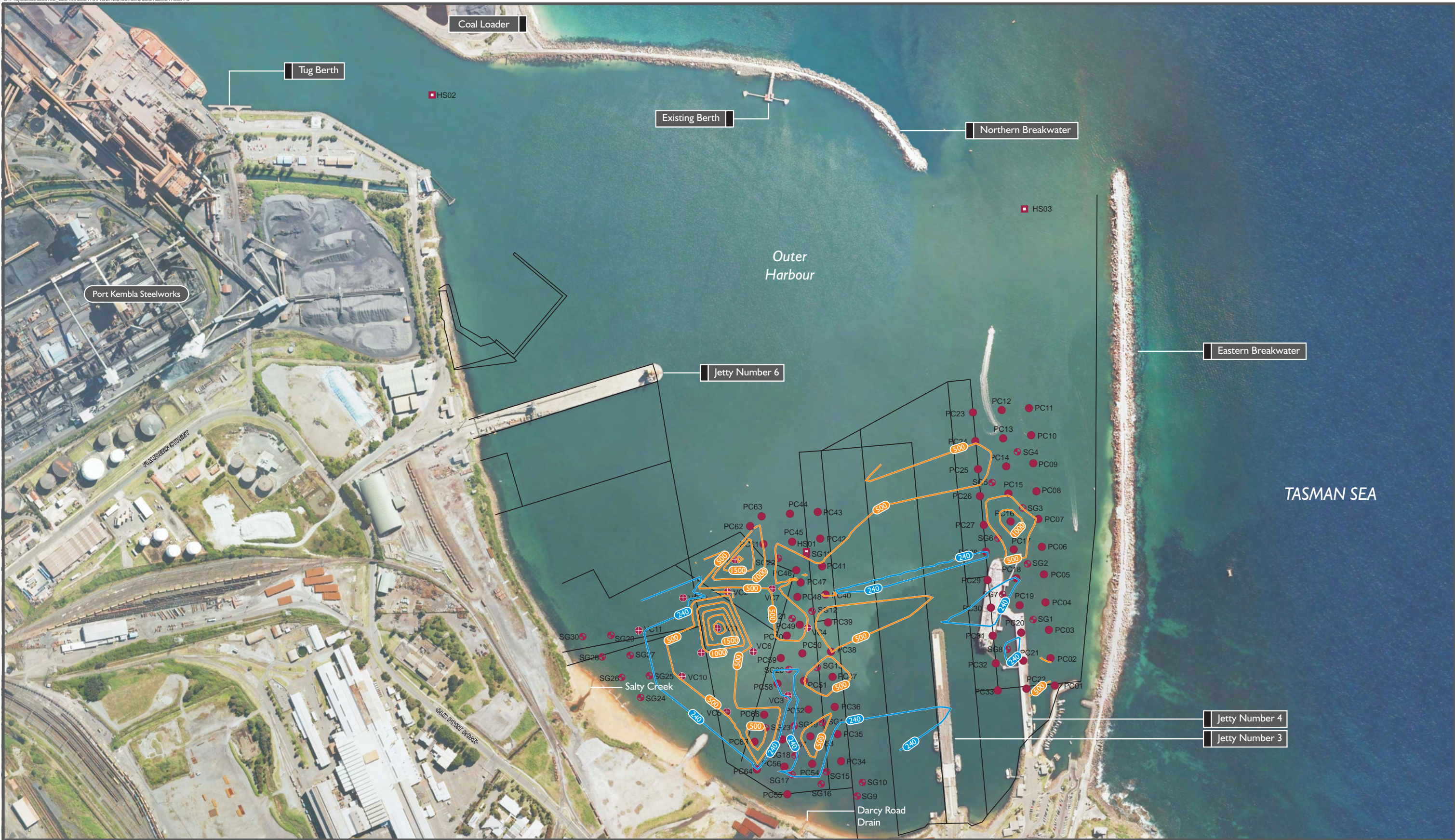


- Anthracene concentration (ug/kg) contour
- ISQG - Low concentration (85 ug/kg)
- Approximate development footprint
- Piston core sample location
- Sediment grab sample location
- Harbour water sample location
- Vibro core sample location

Distribution of Anthracene Concentrations in the Outer Harbour

Port Kembla Port Corporation
Sediment Investigation - Part of EA
for Outer Harbour Redevelopment
Port Kembla NSW 2505

Figure
F9



PROJECT ID S30178
CREATED BY TO
LAST MODIFIED TO 18 12 2009

AECOM
www.aecom.com



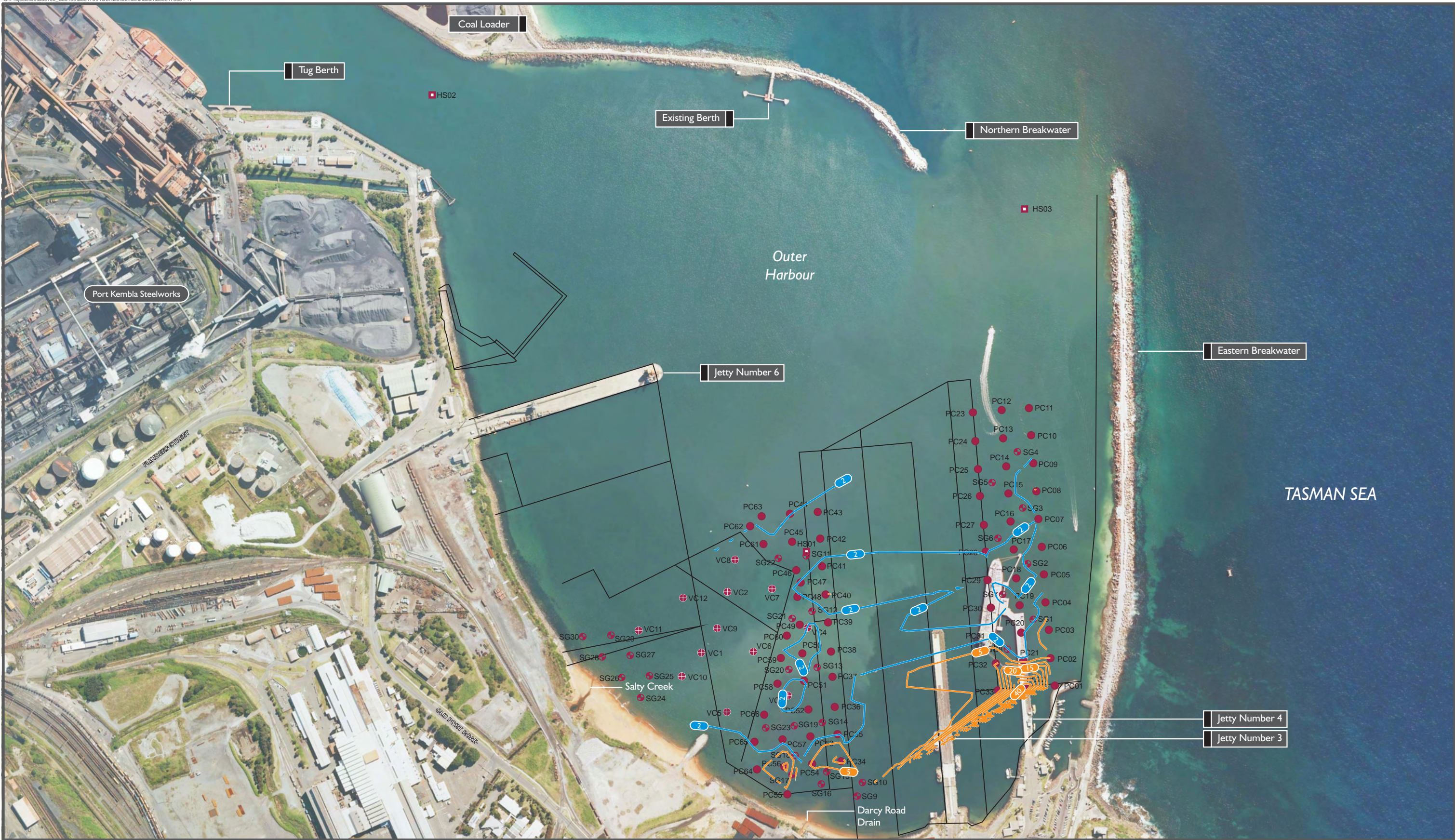
- Phenanthrene concentration (ug/kg) contour
- ISQG - Low concentration 240 (ug/kg)
- Approximate development footprint
- Piston core sample location
- Sediment grab sample location
- Harbour water sample location
- Vibro core sample location

AECOM does not warrant the accuracy or completeness of information displayed in this map and any person using it does so at their own risk. AECOM shall bear no responsibility or liability for any errors, faults, defects, or omissions in the information.

Distribution of Phenanthrene Concentrations in the Outer Harbour

Port Kembla Port Corporation
Sediment Investigation - Part of EA
for Outer Harbour Redevelopment
Port Kembla NSW 2505

Figure
F10



PROJECT ID S30178
CREATED BY TO
LAST MODIFIED TO 18 12 2009

AECOM
www.aecom.com

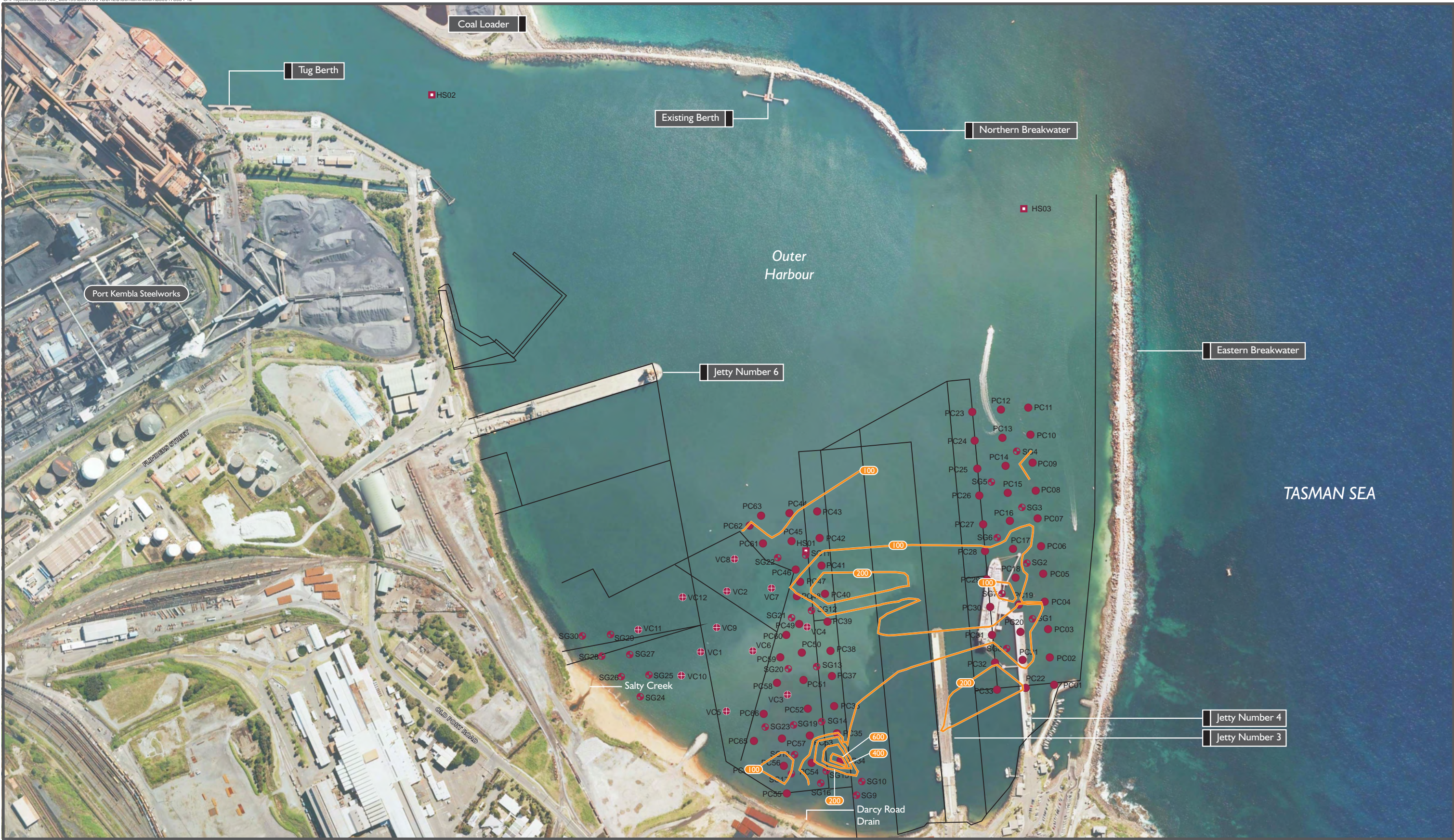
AECOM does not warrant the accuracy or completeness of information displayed in this map and any person using it does so at their own risk. AECOM shall bear no responsibility or liability for any errors, faults, defects, or omissions in the information.

- Antimony concentration (mg/kg) contour
- ISQG - Low concentration (2mg/kg) contour
- Approximate development footprint
- Piston core sample location
- Sediment grab sample location
- Harbour water sample location
- Vibro core sample location

Distribution of Antimony Concentrations in the Outer Harbour

Port Kembla Port Corporation
Sediment Investigation - Part of EA
for Outer Harbour Redevelopment
Port Kembla NSW 2505

Figure
F11



PROJECT ID S30178
CREATED BY TO
LAST MODIFIED TO 21 08 2009

AECOM
www.aecom.com



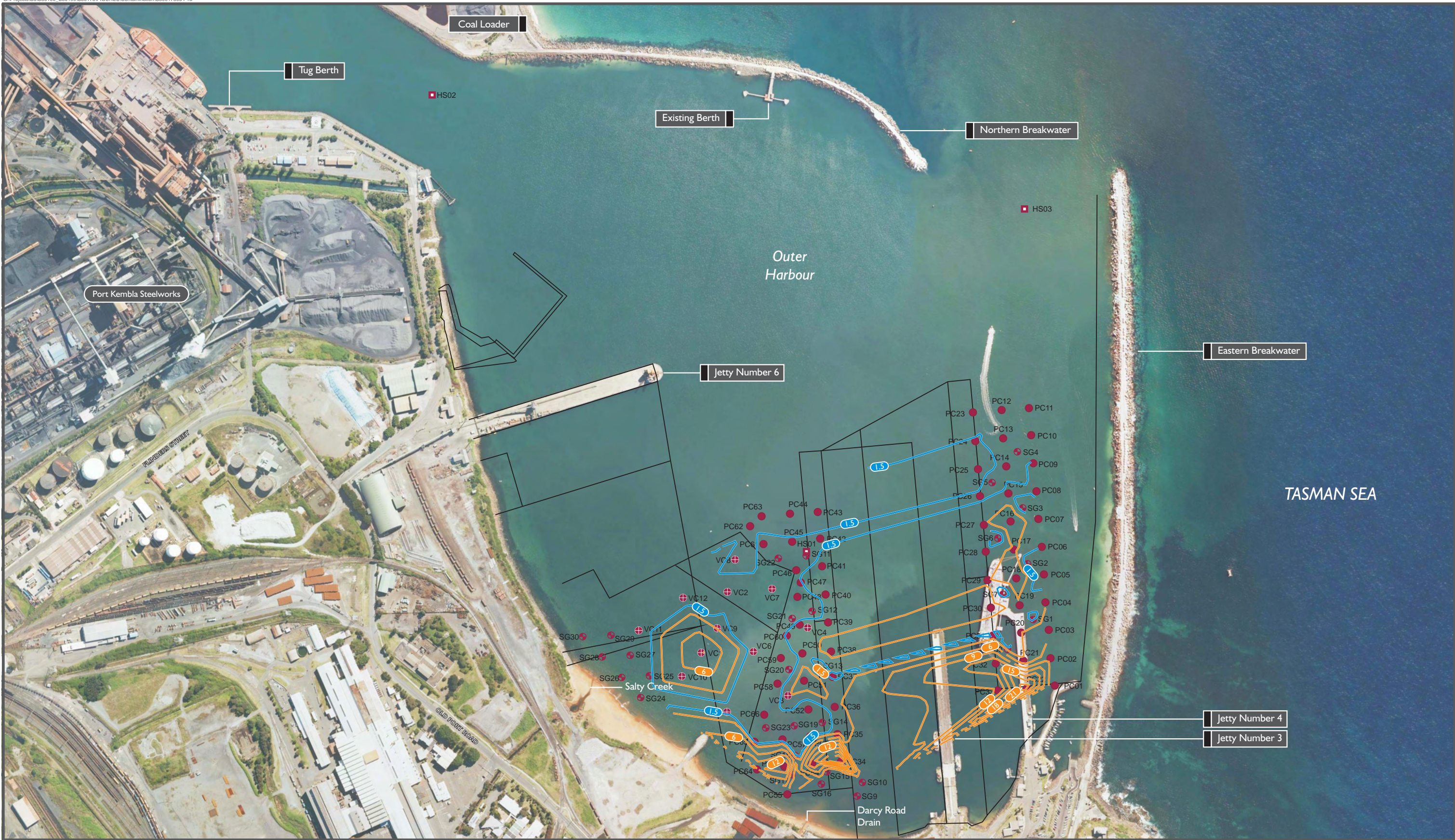
- Arsenic concentration (mg/kg) contour
- ISQG - Low concentration (20mg/kg) contour
- Approximate development footprint
- Piston core sample location
- ⊕ Sediment grab sample location
- Harbour water sample location
- ⊕ Vibro core sample location

AECOM does not warrant the accuracy or completeness of information displayed in this map and any person using it does so at their own risk. AECOM shall bear no responsibility or liability for any errors, faults, defects, or omissions in the information.

Distribution of Arsenic Concentrations in the Outer Harbour

Port Kembla Port Corporation
Sediment Investigation - Part of EA
for Outer Harbour Redevelopment
Port Kembla NSW 2505

Figure
F12



PROJECT ID S30178
CREATED BY TO
LAST MODIFIED TO 18 12 2009

AECOM
www.aecom.com

AECOM does not warrant the accuracy or completeness of information displayed in this map and any person using it does so at their own risk. AECOM shall bear no responsibility or liability for any errors, faults, defects, or omissions in the information.



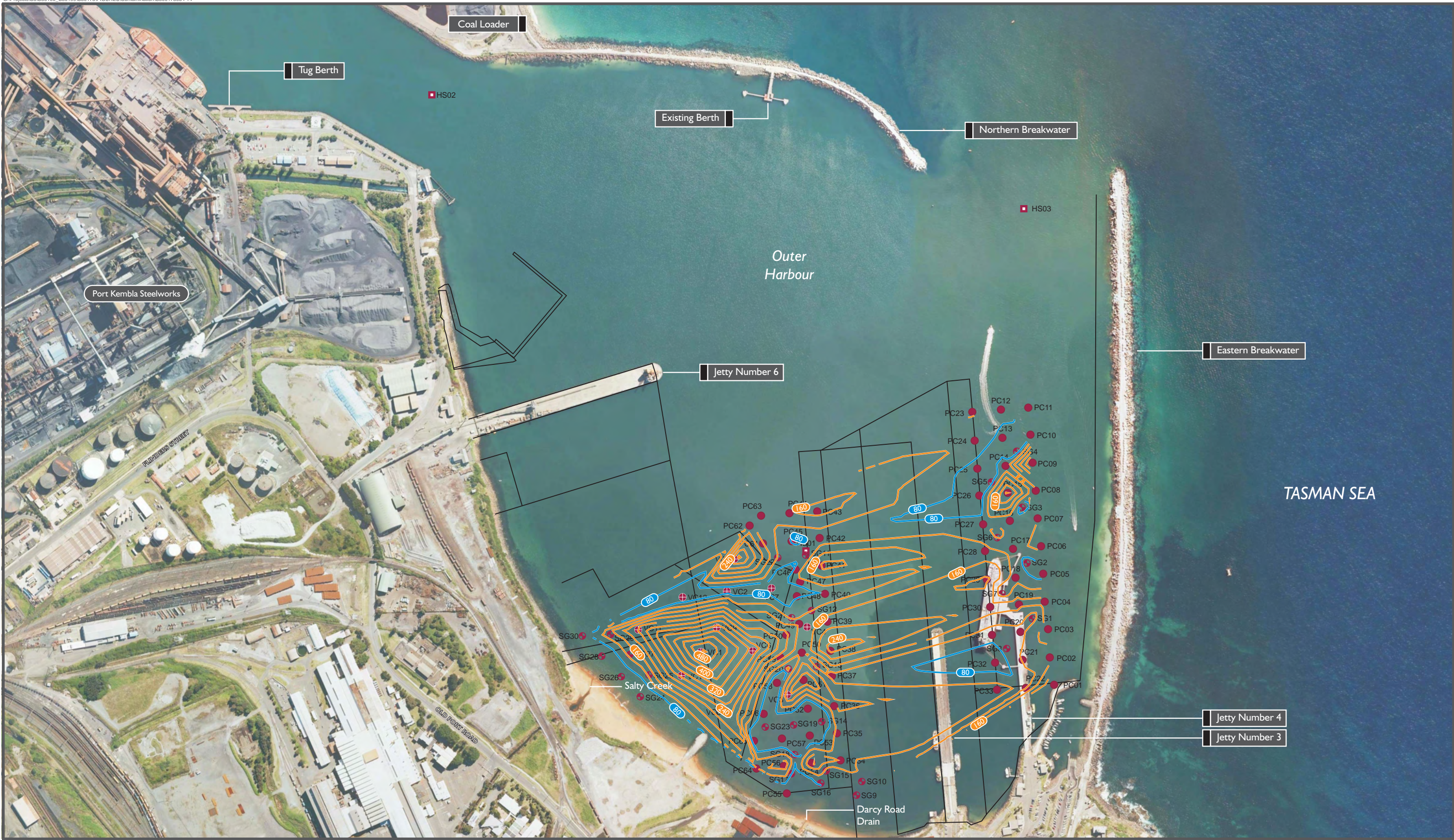
- Cadmium concentration (mg/kg) contour
- ISQG - Low concentration (1.5mg/kg) contour
- Approximate development footprint
- Piston core sample location
- Sediment grab sample location
- ◆ Harbour water sample location
- Vibro core sample location

Distribution of Cadmium Concentrations in the Outer Harbour

Port Kembla Port Corporation
Sediment Investigation - Part of EA
for Outer Harbour Redevelopment
Port Kembla NSW 2505

Figure

F13



PROJECT ID S30178
CREATED BY TO
LAST MODIFIED TO 18 12 2009

AECOM
www.aecom.com



- Chromium concentration (mg/kg) contour
- ISQG - Low concentration (80mg/kg) contour
- Approximate development footprint
- Piston core sample location
- Sediment grab sample location
- Harbour water sample location
- Vibro core sample location

AECOM does not warrant the accuracy or completeness of information displayed in this map and any person using it does so at their own risk. AECOM shall bear no responsibility or liability for any errors, faults, defects, or omissions in the information.

Distribution of Chromium Concentrations in the Outer Harbour

Port Kembla Port Corporation
Sediment Investigation - Part of EA
for Outer Harbour Redevelopment
Port Kembla NSW 2505

Figure

F14



PROJECT ID S30178
CREATED BY TO
LAST MODIFIED TO 18 12 2009

AECOM
www.aecom.com

AECOM does not warrant the accuracy or completeness of information displayed in this map and any person using it does so at their own risk. AECOM shall bear no responsibility or liability for any errors, faults, defects, or omissions in the information.



- Copper concentration (mg/kg) contour
- ISQG - Low concentration (65mg/kg) contour
- Approximate development footprint
- Piston core sample location
- ⊕ Sediment grab sample location
- Harbour water sample location
- ⊕ Vibro core sample location







Distribution of Copper Concentrations in the Outer Harbour

Port Kembla Port Corporation
Sediment Investigation - Part of EA
for Outer Harbour Redevelopment
Port Kembla NSW 2505

Figure

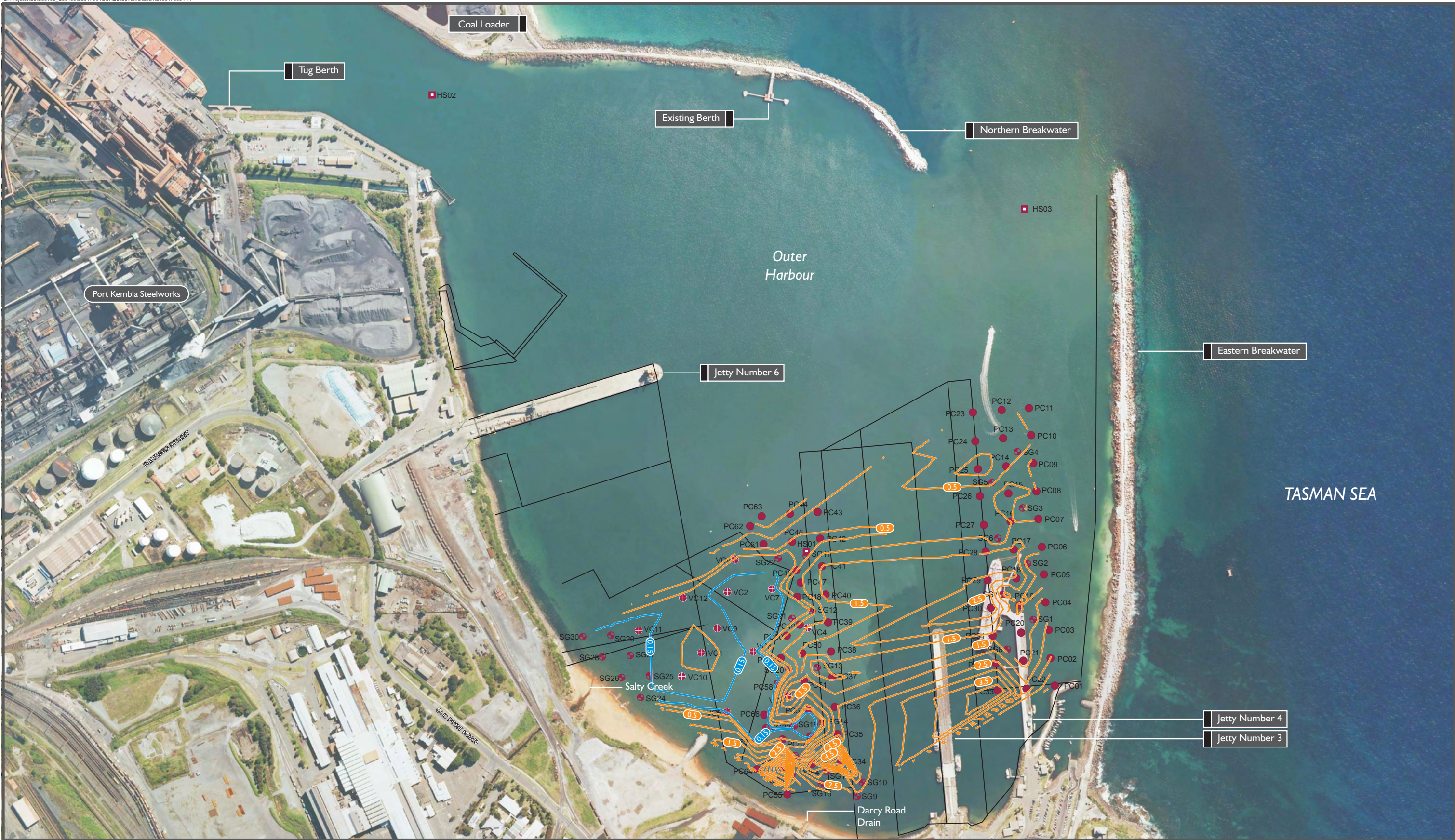
F15

AECOM
www.aecom.com

- Lead concentration (mg/kg) contour
-  ISQG - Low concentration (50mg/kg)
-  Approximate development footprint
-  Piston core sample location
-  Sediment grab sample location
-  Harbour water sample location
-  Vibro core sample location

Port Kembla Port Corporation
Sediment Investigation - Part of EA
for Outer Harbour Redevelopment
Port Kembla NSW 2505

Figure
F16



PROJECT ID S30178
CREATED BY TO
LAST MODIFIED TO 18 12 2009

AECOM
www.aecom.com



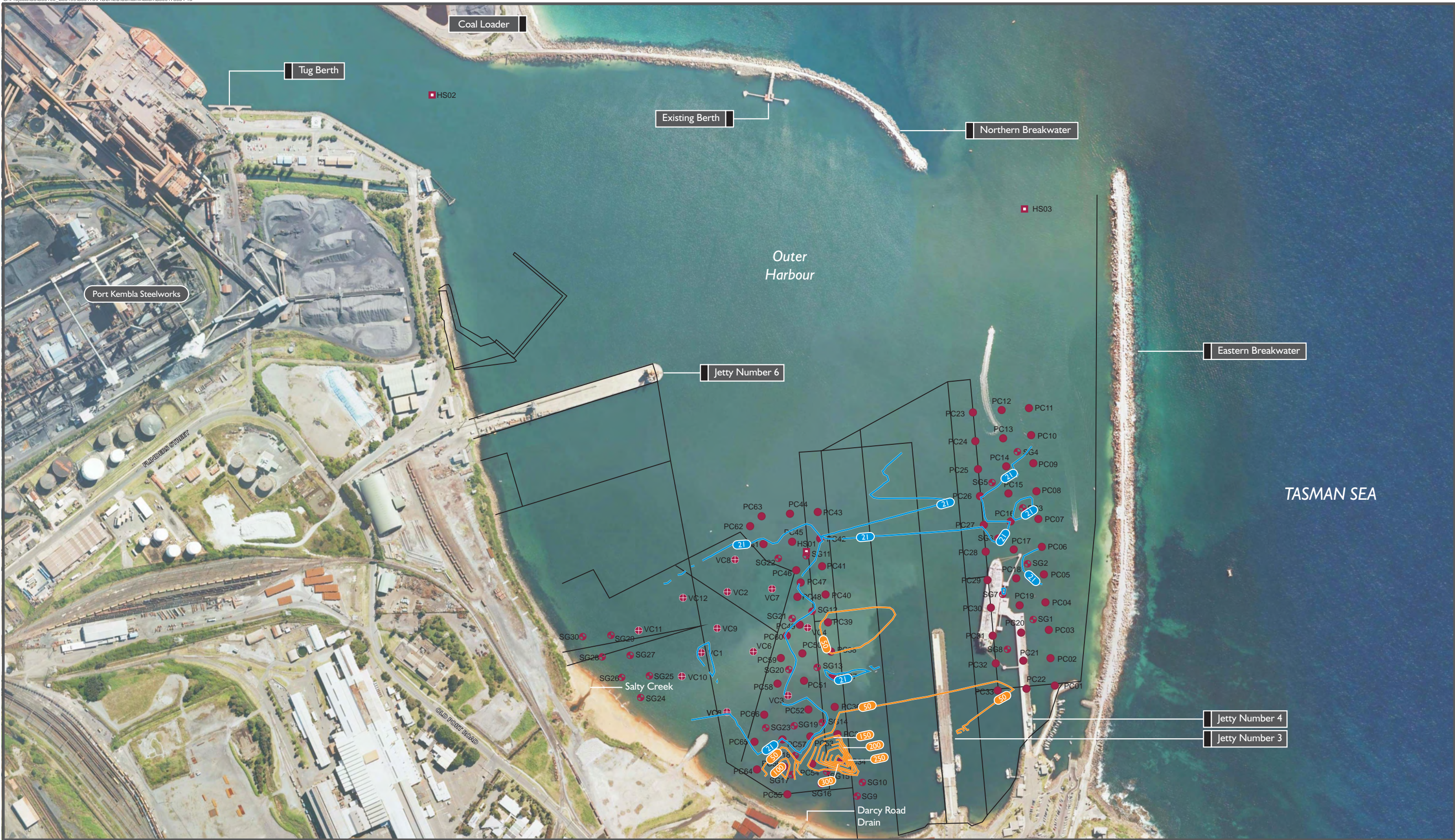
- Mercury concentration (mg/kg) contour
- ISQG - Low concentration (0.15mg/kg) contour
- Approximate development footprint
- Piston core sample location
- Sediment grab sample location
- Harbour water sample location
- Vibro core sample location

AECOM does not warrant the accuracy or completeness of information displayed in this map and any person using it does so at their own risk. AECOM shall bear no responsibility or liability for any errors, faults, defects, or omissions in the information.

Distribution of Mercury Concentrations in the Outer Harbour

Port Kembla Port Corporation
Sediment Investigation - Part of EA
for Outer Harbour Redevelopment
Port Kembla NSW 2505

Figure
F17



PROJECT ID S30178
CREATED BY TO
LAST MODIFIED TO 18 12 2009

AECOM
www.aecom.com

AECOM does not warrant the accuracy or completeness of information displayed in this map and any person using it does so at their own risk. AECOM shall bear no responsibility or liability for any errors, faults, defects, or omissions in the information.



- Nickel concentration (mg/kg) contour
- ISQG - Low concentration (21mg/kg) contour
- Approximate development footprint
- Piston core sample location
- Sediment grab sample location
- Harbour water sample location
- Vibro core sample location

Distribution of Nickel Concentrations in the Outer Harbour

Port Kembla Port Corporation
Sediment Investigation - Part of EA
for Outer Harbour Redevelopment
Port Kembla NSW 2505

Figure
F18

Figure
F19



PROJECT ID S30178
CREATED BY TO
LAST MODIFIED TO 18 12 2009

AECOM
www.aecom.com

AECOM does not warrant the accuracy or completeness of information displayed in this map and any person using it does so at their own risk. AECOM shall bear no responsibility or liability for any errors, faults, defects, or omissions in the information.



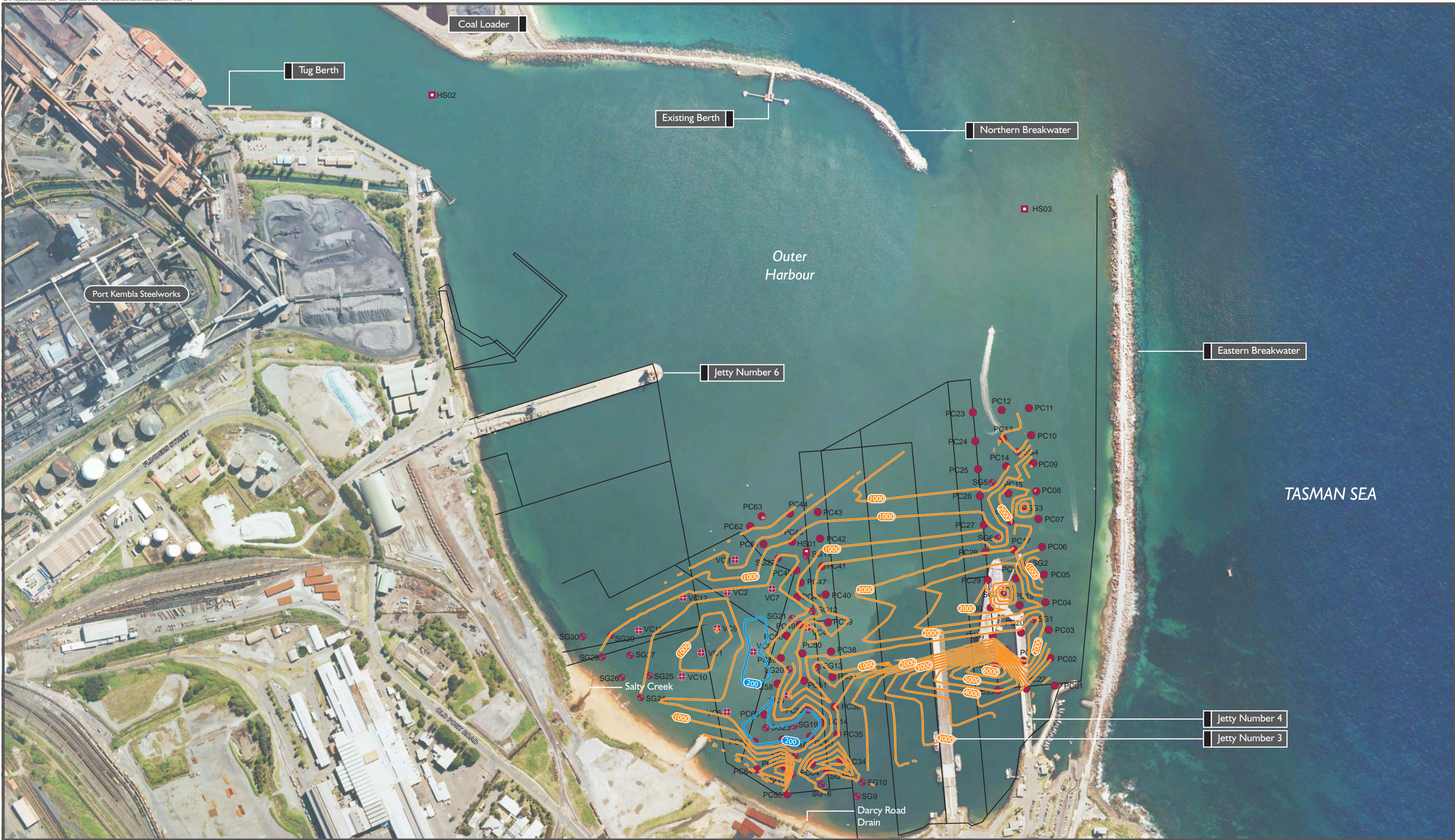
- Silver concentration (mg/kg) contour
- ISQG - Low concentration (1 mg/kg) contour
- Approximate development footprint
- Piston core sample location
- ⊕ Sediment grab sample location
- Harbour water sample location
- ⊕ Vibro core sample location

Distribution of Silver Concentrations in the Outer Harbour

Port Kembla Port Corporation
Sediment Investigation - Part of EA for Outer Harbour Redevelopment
Port Kembla NSW 2505

Figure

F20



PROJECT ID S30178
CREATED BY TO
LAST MODIFIED TO 18 12 2009

AECOM
www.aecom.com

AECOM does not warrant the accuracy or completeness of information displayed in this map and any person using it does so at their own risk. AECOM shall bear no responsibility or liability for any errors, faults, defects, or omissions in the information.



- Zinc concentration (mg/kg) contour
- ISQG Low concentration (200mg/kg) contour
- Approximate development footprint
- Piston core sample location
- ⊕ Sediment grab sample location
- Harbour water sample location
- ⊕ Vibro core sample location

Distribution of Zinc Concentrations in the Outer Harbour

Port Kembla Port Corporation
Sediment Investigation - Part of EA
for Outer Harbour Redevelopment
Port Kembla NSW 2505

Figure
F21

“This page has been left blank intentionally”