

## 2.2 Local Urban Conditions

## 2.2.1 Local Context

Cardinal Freeman Village is located approximately 1 km south of the Ashfield Town Centre.

It is ideally situated being close to major transport infrastructure, a busy retail centre offering all services accessible via a level walk.

Figure 2.2.1 identifies an established walking radii of 200m (5 minutes), 400m (10 minutes) and 800m (20 minutes). The site is well served by facilities, open space, transport, permeable street structure allowing easy movement within the suburb and a level topography.

It is within 200m of bus services and Sydney Private Hospital, 400m of parks and Trinity Grammar School,; and within 1 km of Ashfield town centre.

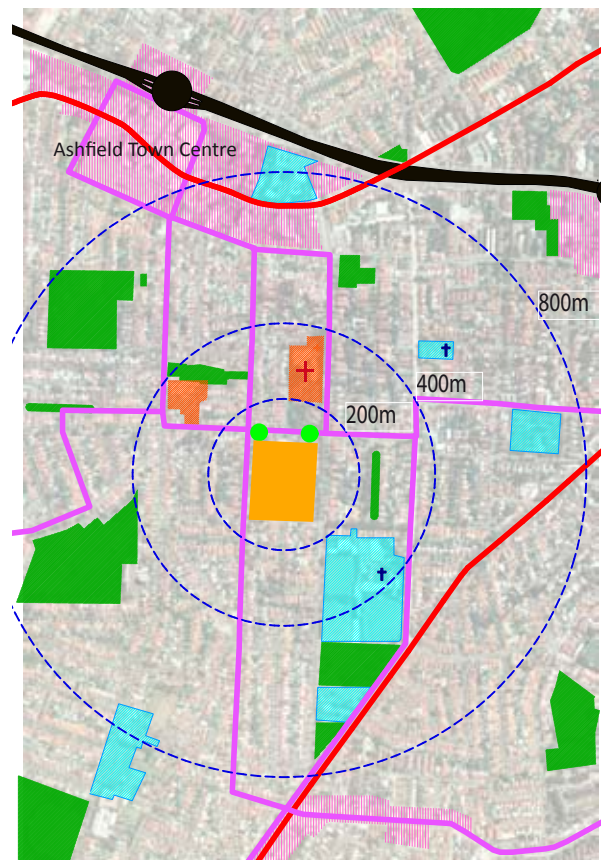


Figure 2.2.1 Cardinal Freeman Village in Local Context

## 2.2.2 Facilities and Services

There are many large civic and institutional facilities in the Ashfield area that complement the diverse residential accommodation.

Schools churches, private hospitals, clubs and other aged care facilities are dotted throughout the area.

Ashfield, Summer Hill and Canterbury town centres provide close proximity to all services.

CFV is the largest full services seniors' community in the inner west of Sydney.

Several services provided within CFV are available for use by non-residents of the village.

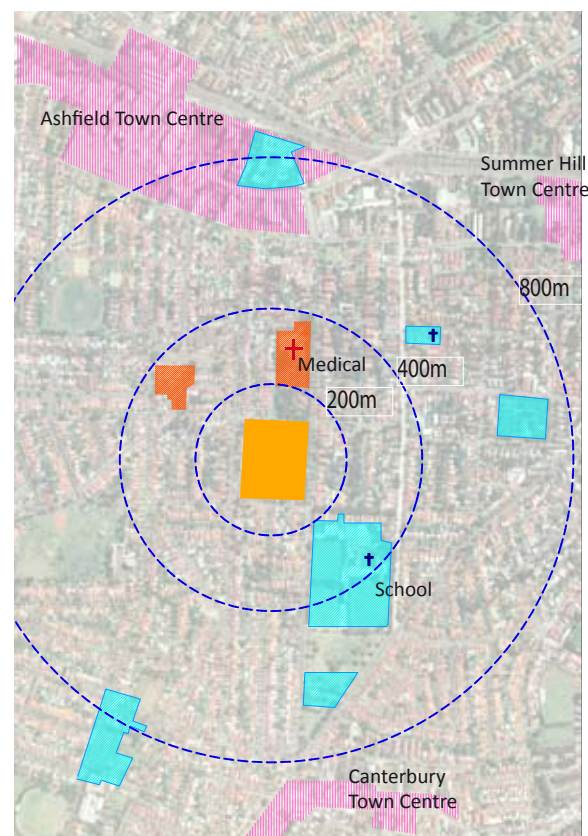


Figure 2.2.2 Facilities

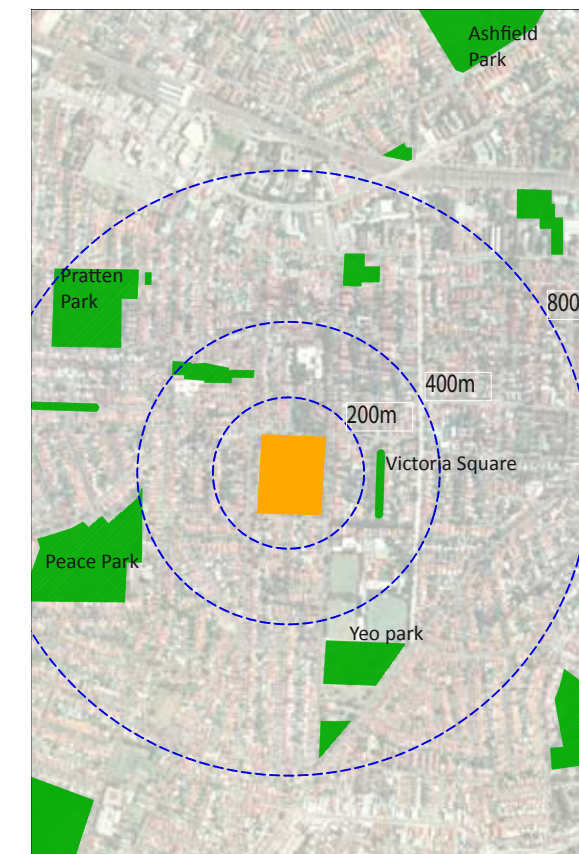
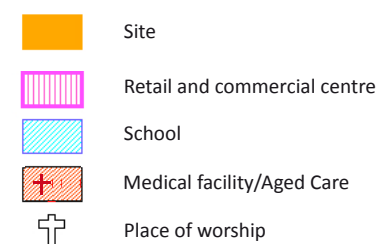


Figure 2.1.3 Local Parks and Open Spaces

## 2.2.3 Parks and Open Spaces

Cardinal Freeman Village is well situated amongst a network of public spaces.

Within walking distance are significant public parks such as Yeo Park, Ashfield Park, Peace Park and Pratten Park.

Victoria Square is only one block to the east of the site.

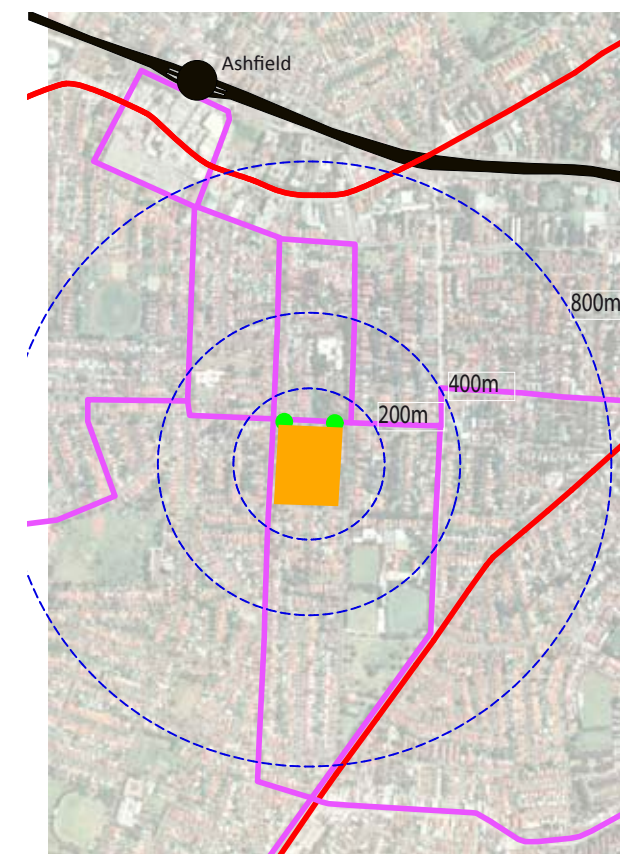
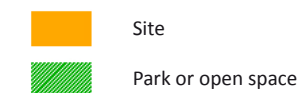


Figure 2.1.4 Public Transport

## 2.2.4 Transport

Cardinal Freeman Village is served well by public transport infrastructure, being located 800m from the Western Train Line and close to the South-Western Line to the south of Ashfield.

The site is also served by Sydney Buses and local bus routes travelling to Ashfield station, Canterbury Stations and beyond Ashfield.

Main vehicular access to major service centres is provided by the Hume Highway which runs parallel to the train line through Ashfield.

Cardinal Freeman Village is located with direct access from Victoria Street and Queen Street to the Hume Highway

