

157-163 Cleveland Street Redfern
Hudson Centre

Vehicle Movement Study
April 2010



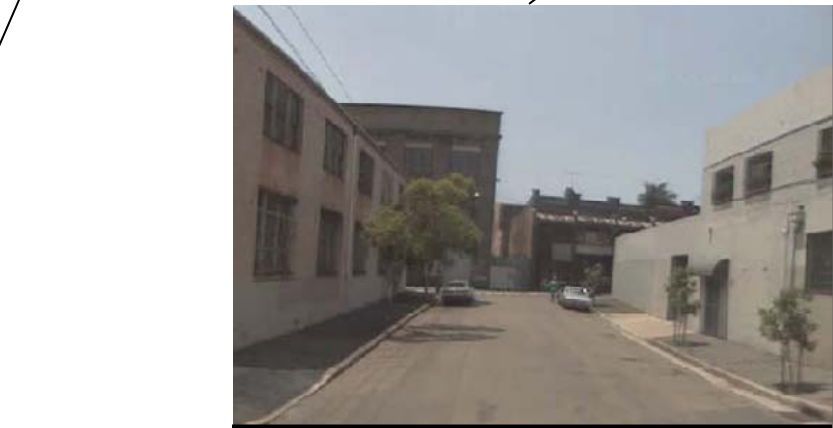
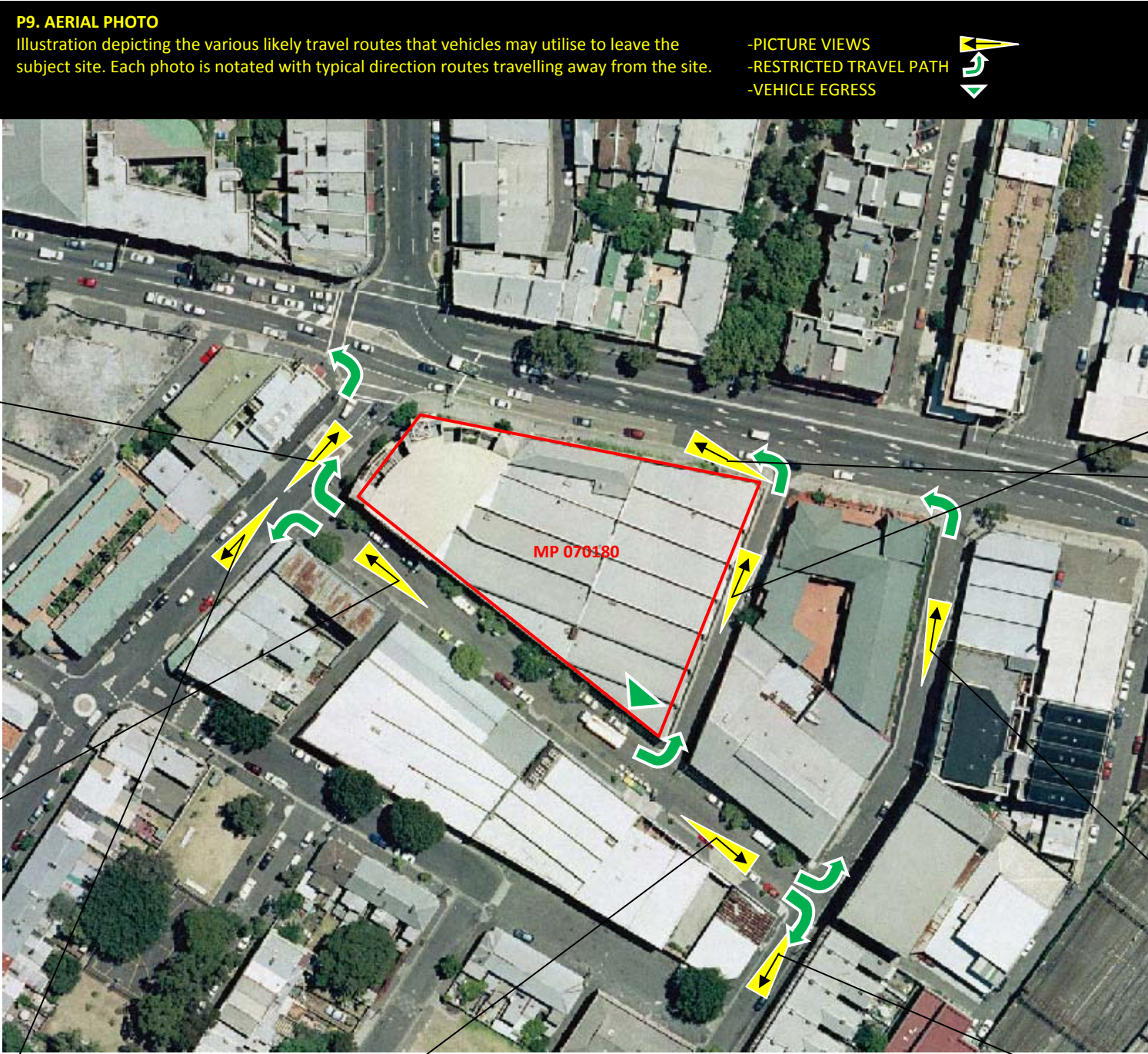
P1. ABERCROMBIE intersecting with CLEVELAND
Traffic Lights: Vehicles may only travel left towards City Road on signal. Travelling WEST towards PARRAMATTA RD or SOUTH towards Newtown.



P2. HUDSON intersecting with ABERCROMBIE
No Signage: Left turning vehicles may travel SOUTH towards Newtown or EAST towards Redfern bound. Right turning vehicles arrive at the intersection illustrated in P1.



P3. ABERCROMBIE going SOUTH
Vehicles use this route likely to travel SOUTH towards Newtown or EAST towards Redfern & Eastern Suburbs.



P7. HUDSON intersecting with EVELEIGH
No Signage. Vehicles may travel NORTH to access CLEVELAND Street as illustrated in P6 or travel SOUTH towards Redfern and Eastern Suburbs as illustrated in P3.



P8. EVELEIGH travelling SOUTH
Vehicles may travel SOUTH towards Lawson street to access Redfern and Eastern Suburbs.



P4. HART intersecting with CLEVELAND
No Signage. Vehicles may TURN LEFT ONLY travelling WEST towards City Road and turn right at ABERCROMBIE to travel NORTH towards Harbour



P5. HART intersecting with CLEVELAND
View towards WEST.



P6. EVELEIGH intersecting with CLEVELAND
No Signage. Vehicles may use EVELEIGH street to access Cleveland Street to enable better convenient access into the RIGHT TURN lanes on CLEVELAND street.