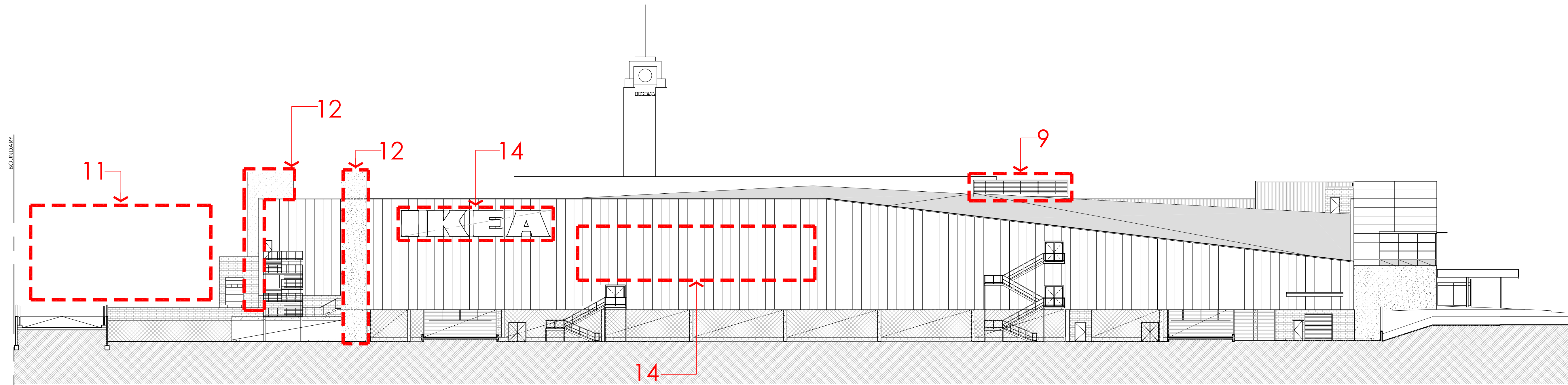


PRELIMINARY ISSUE  
NOT FOR CONSTRUCTION

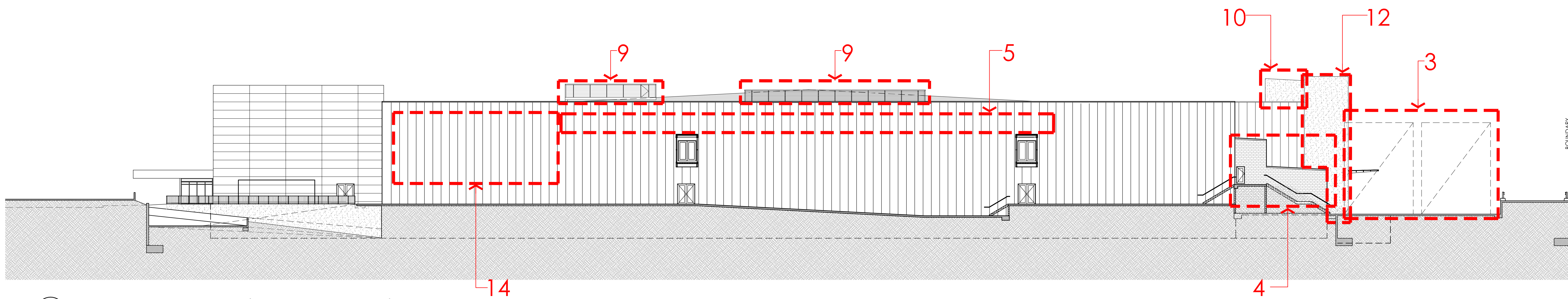
ISSUE	AMENDMENT	DATE	CHKD
1	REVISED DEVELOPMENT APPLICATION	04.03.10	S.M.

NOTES OF MODIFICATIONS:

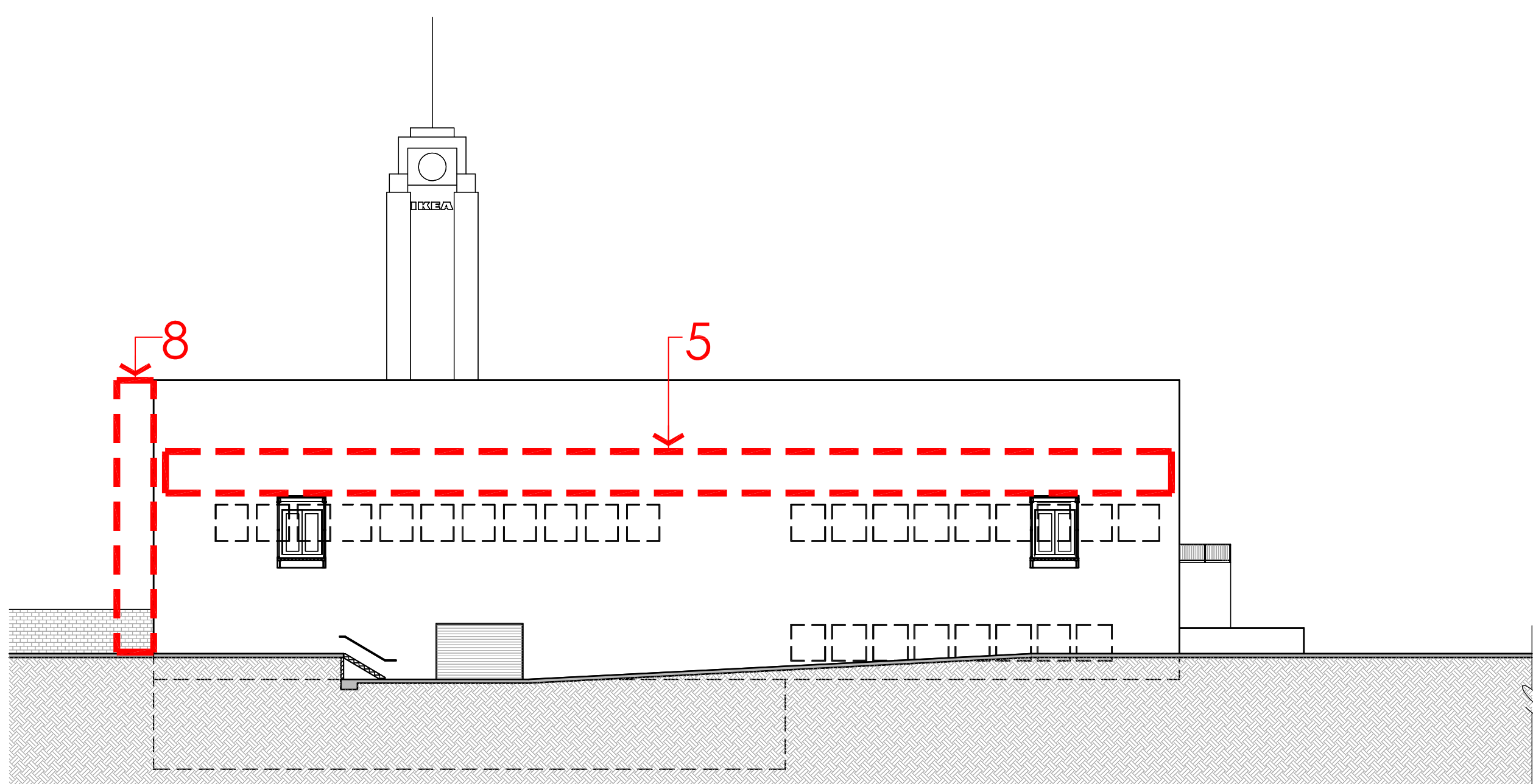
- 1 DELETION OF THE TWO BALCONIES FROM THE NORTH ELEVATION OF THE BUILDING
- 2 CHANGES TO THE CARPARK & ENTRANCE AREA FROM BELLEVUE STREET AS PER SACL ADVICE
- 3 LOCATING THE FIRE SPRINKLER TANKS EXTERNALLY
- 4 EXTENSION OF THE BUILDING FOR ESSENTIAL SERVICES AT GROUND & LOWER GROUND FLOOR LEVELS.
- 5 DELETION OF THE GLASS CANOPY BETWEEN THE HERITAGE BUILDING AND THE STORE
- 6 REVISED DESIGN OF THE CANOPY OVER THE FRONT ENTRY
- 7 CHANGE IN ROOF DESIGN
- 8 DELETION OF THE LIFT AT SOUTHERN END OF ATECO BUILDING
- 9 ADDITION OF THE OPEN MECHANICAL PLATFORMS AT ROOF LEVEL
- 10 ADDITION OF STAIR ACCESS UP TO ROOF LEVEL
- 11 RELOCATION OF THE FIG TREE
- 12 ADDITION OF THE LOWER GROUND FLOOR CARPARK EXHAUST TOWERS
- 13 ADDITION OF CARPARK EXHAUST PLENUM AT LOWER GROUND FLOOR LEVEL & RAIN WATER STORAGE TANKS UNDER THE LOADING DOCK SLAB
- 14 REVISED IKEA SIGNAGE LAYOUT/ DIMENSIONS
- 15 ADDITION OF IKEA WORDMARK AT ROOF LEVEL IN ROOF MEMBRANE MATERIAL
- 16 REVISED LANDSCAPING DESIGN
- 17 ADDITION OF MECHANICAL EQUIPMENT IN THE LOWER GROUND FLOOR OF ATECO BUILDING
- 18 ADDITION OF LOUVRES IN EXTERNAL WALL OF FIRST FLOOR MECHANICAL PLANTROOM



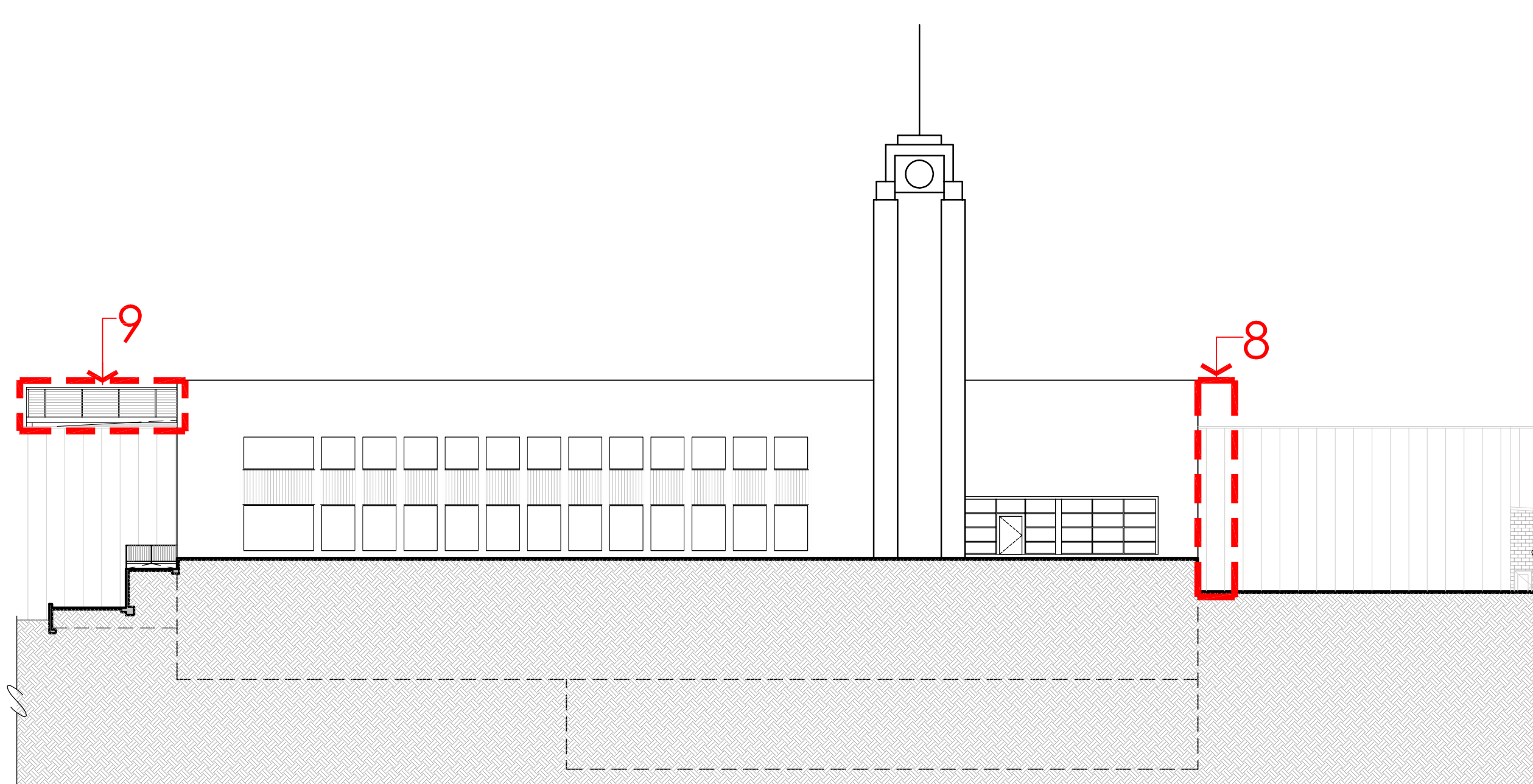
3 EAST ELEVATION - PART 1 (CONTINUED BELOW)  
SCALE 1:250



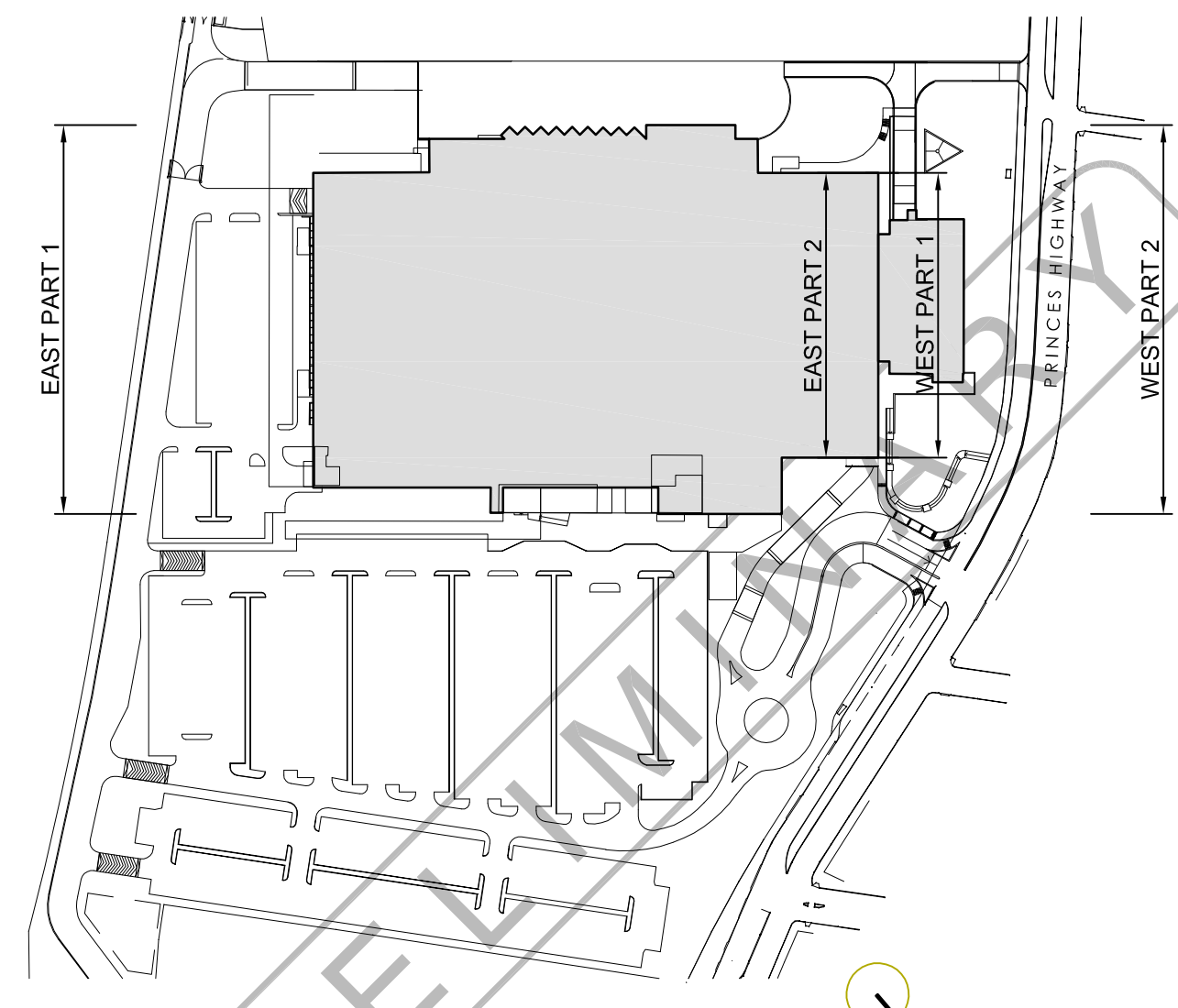
4 WEST ELEVATION - PART 1 (CONTINUED BELOW)  
SCALE 1:250



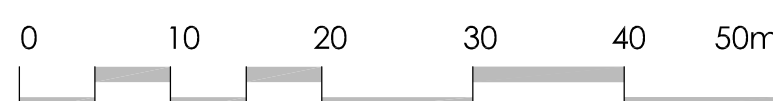
5 EAST ELEVATION - PART 2 (CONTINUED FROM ABOVE)  
SCALE 1:250



6 WEST ELEVATION - PART 2 (CONTINUED FROM ABOVE)  
SCALE 1:250



ELEVATION REFERENCE PLAN  
SCALE NTS



**IKEA**

**LEFFLER SIMES ARCHITECTS**

7 Young St, Neutral Bay  
Sydney NSW 2059 AUSTRALIA  
P +61 2 9109 3344  
F +61 2 9109 3828  
W www.lefflersimes.com.au

Level 2, 18 Oliver Lane  
Melbourne VIC 3000 AUSTRALIA  
P +61 3 9654 6344  
F +61 3 9654 8244  
E info@lefflersimes.com.au

ACH 001 043 992 AEN 39 001 043 992

CLIENT  
**IKEA TEMPE**

PROJECT  
**Proposed Bulky Goods  
Development;  
Princes Highway  
Tempe, Sydney, NSW**

DRAWING  
**East & West Elevations**

DATE August 2009	SCALE 1:250	DRAWN CK
PROJECT No. 2725	DRAWING No. DA 302	ISSUE 1