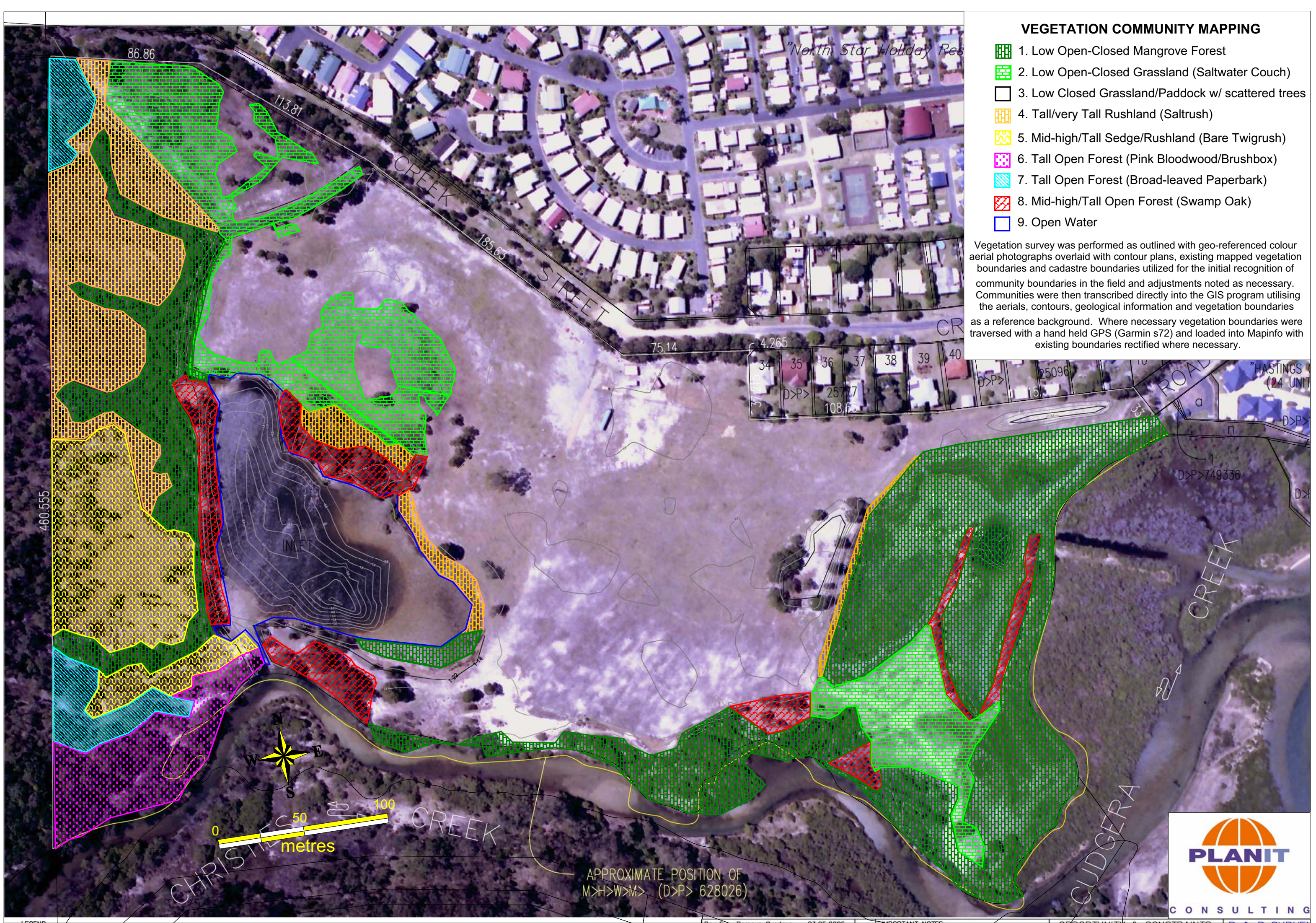






VEGETATION COMMUNITY MAPPING

- 1. Low Open-Closed Mangrove Forest
- 2. Low Open-Closed Grassland (Saltwater Couch)
- 3. Low Closed Grassland/Paddock w/ scattered trees
- 4. Tall/very Tall Rushland (Saltrush)
- 5. Mid-high/Tall Sedge/Rushland (Bare Twigrush)
- 6. Tall Open Forest (Pink Bloodwood/Brushbox)
- 7. Tall Open Forest (Broad-leaved Paperbark)
- 8. Mid-high/Tall Open Forest (Swamp Oak)
- 9. Open Water

Vegetation survey was performed as outlined with geo-referenced colour aerial photographs overlaid with contour plans, existing mapped vegetation boundaries and cadastre boundaries utilized for the initial recognition of community boundaries in the field and adjustments noted as necessary. Communities were then transcribed directly into the GIS program utilising the aerials, contours, geological information and vegetation boundaries as a reference background. Where necessary vegetation boundaries were traversed with a hand held GPS (Garmin s72) and loaded into Mapinfo with existing boundaries rectified where necessary.



ENDANGERED ECOLOGICAL COMMUNITY MAPPING

-  COASTAL SALTMARSH IN THE NSW NORTH COAST, SYDNEY BASIN AND SOUTH EAST CORNER BIOREGIONS
-  SWAMP OAK FLOODPLAIN FOREST OF THE NSW NORTH COAST, SYDNEY BASIN AND SOUTH EAST CORNER BIOREGIONS
-  SUBTROPICAL COASTAL FLOODPLAIN FOREST OF THE NSW NORTH COAST BIOREGION
-  SWAMP SCLEROPHYLL FOREST ON COASTAL FLOODPLAINS OF THE NSW NORTH COAST, SYDNEY BASIN AND SOUTH EAST CORNER BIOREGIONS

NOTE: The above EECs are to be read in conjunction with Section 3.2.1 of the attached report

