



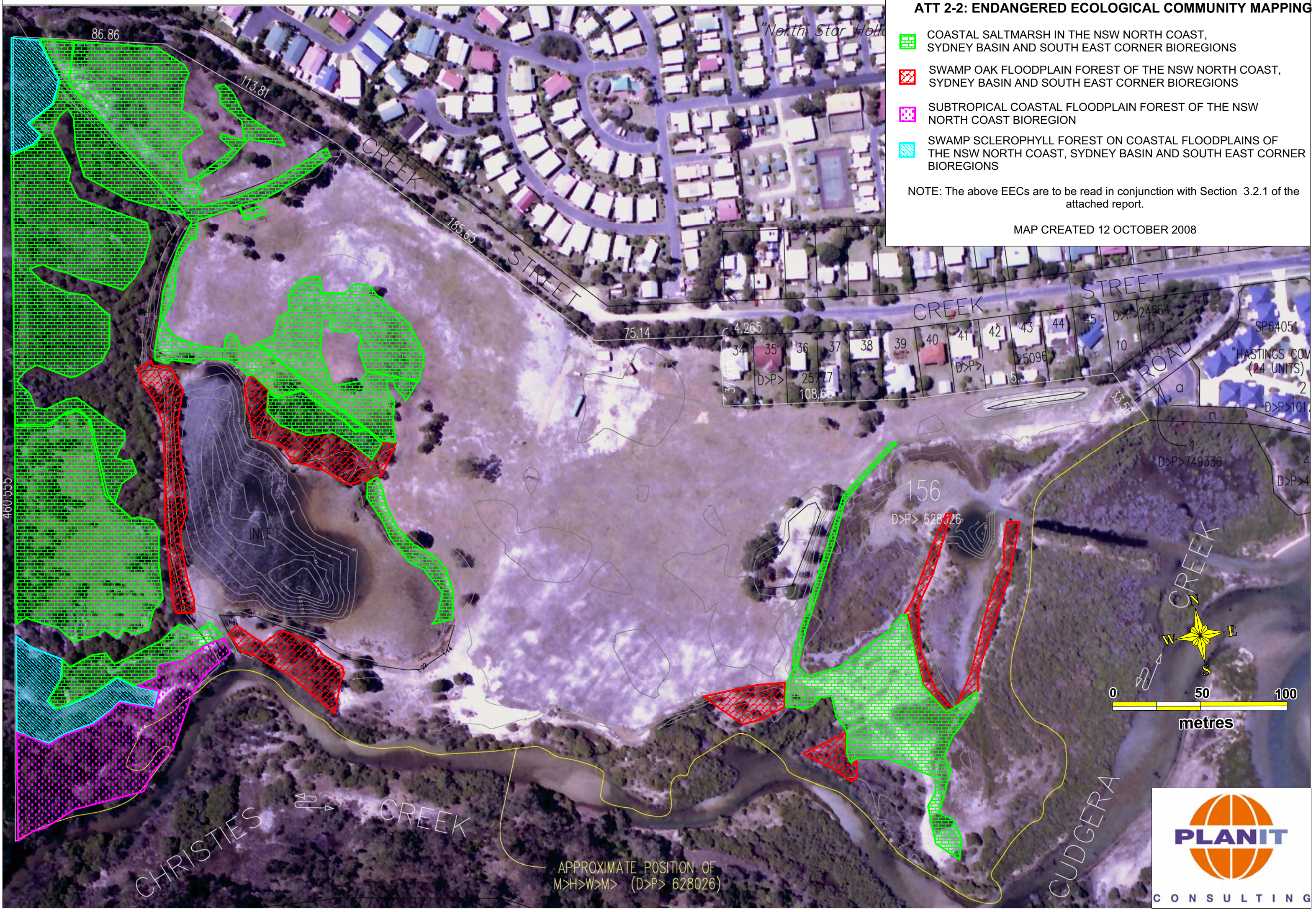


ATT 2-2: ENDANGERED ECOLOGICAL COMMUNITY MAPPING

-  COASTAL SALTMARSH IN THE NSW NORTH COAST, SYDNEY BASIN AND SOUTH EAST CORNER BIOREGIONS
-  SWAMP OAK FLOODPLAIN FOREST OF THE NSW NORTH COAST, SYDNEY BASIN AND SOUTH EAST CORNER BIOREGIONS
-  SUBTROPICAL COASTAL FLOODPLAIN FOREST OF THE NSW NORTH COAST BIOREGION
-  SWAMP SCLEROPHYLL FOREST ON COASTAL FLOODPLAINS OF THE NSW NORTH COAST, SYDNEY BASIN AND SOUTH EAST CORNER BIOREGIONS

NOTE: The above EECs are to be read in conjunction with Section 3.2.1 of the attached report.

MAP CREATED 12 OCTOBER 2008



ATT 2-3: VEGETATION MANAGEMENT MAPPING



VEGETATION COMMUNITY 3 TO BE CLEARED WITHIN DEVELOPMENT ENVELOPE



VEGETATION COMMUNITY 2 TO BE CLEARED WITHIN DEVELOPMENT ENVELOPE



REMNANT VEGETATION COMMUNITIES AND WATERBODIES TO BE RETAINED WITHIN ENVIRONMENTAL ZONES/PARKLANDS



MANAGED RECREATIONAL PARKLANDS. ALL EXISTING TREES TO BE RETAINED



REHABILITATION/RESTORATION ZONES TO BE MANAGED FOR VEGETATION CLEARING OFFSETS



VEGETATION COMMUNITY 2 (SALTMARSH) AND 3 (OPEN Paddock/GRASSLAND) WITHIN 2E (RESIDENTIAL TOURIST) ZONE TO BE RETAINED

*This map is only to be read in conjunction with the attached flora and fauna assessment, specifically Sections 3, 5, 6 and 7.

MAP CREATED 25 FEBRUARY 2010

