

NOTE:
REFER FIGURE DA26 FOR
SITE CROSS SECTIONS

20 10 0 20 40 60 80m
SCALE BEFORE REDUCTION 1: 1000

© Cardno (Qld) Pty Ltd All Rights Reserved 2002.
Copyright in the whole and every part of this drawing belongs to Cardno (Qld) Pty Ltd and may not be used,
sold, transferred, copied or reproduced in whole or in part in any manner or form or on any media, to any
person other than by agreement with Cardno (Qld) Pty Ltd.

This document is produced by Cardno (Qld) Pty Ltd solely for the benefit of and use by the client in
accordance with the terms of the retainer. Cardno (Qld) Pty Ltd does not and shall not assume any
responsibility or liability whatsoever to any third party arising out of any use or reliance by third party
on the content of this document.

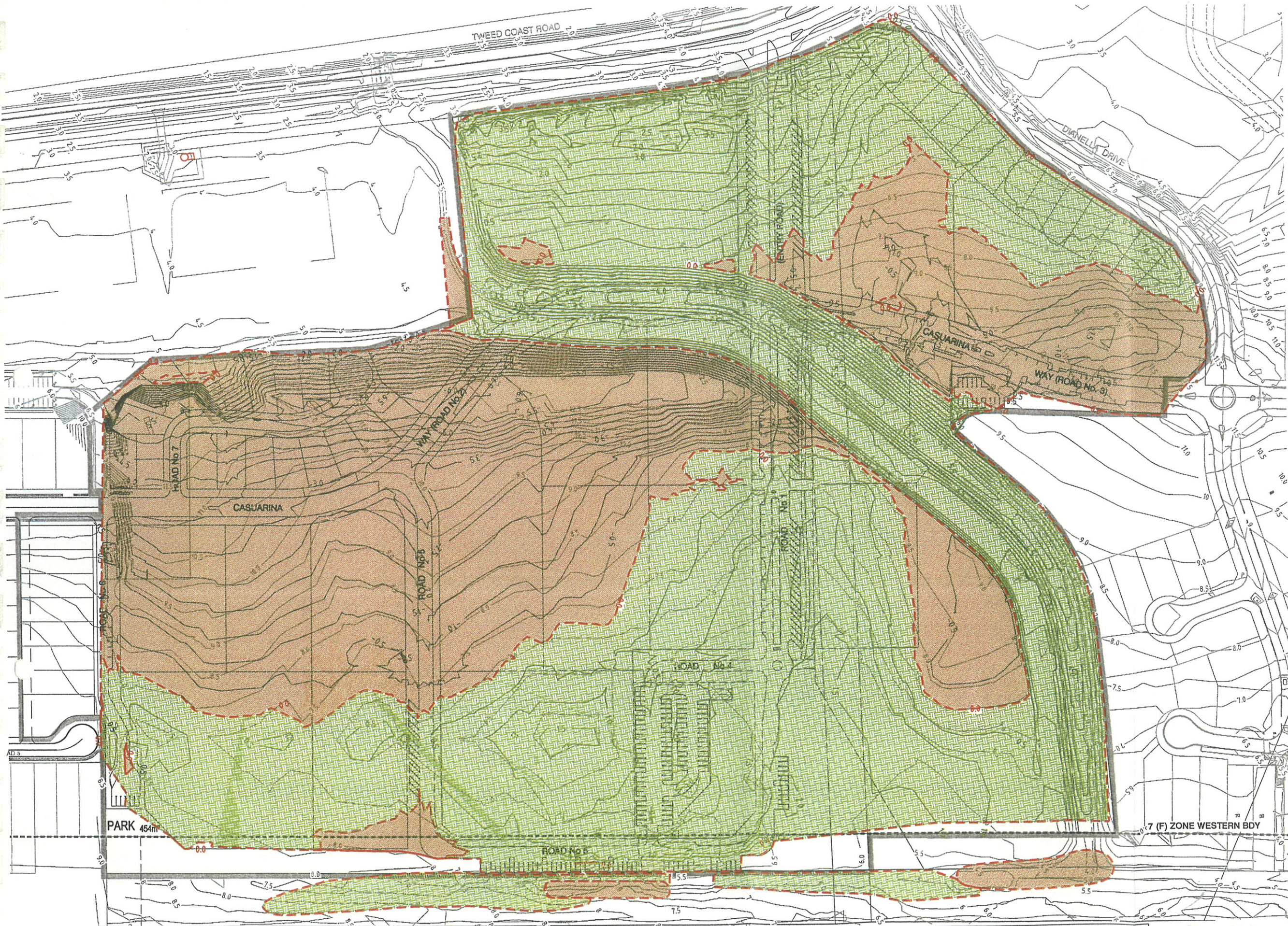


Cardno (Qld) Pty Ltd ACN: 051 074 992
Commercial Centre, Isle of Capri
Gold Coast City, Queensland 4217
Email: gco@cardno.com.au

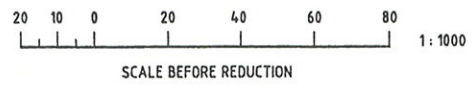
KINGS BEACH (No. 2) PTY LTD
CASUARINA BEACH
TOWN CENTRE
DA SUBMISSION

SCALE :- AS SHOWN A1
DATE :- 10 JULY, 2007 REV. M
DRAWING No.
7079/2/1-FIG DA24

FIGURE No. DA24M(06/01/10)
FINISHED SURFACE CONTOURS



- LEGEND:**
- 1.0 ——— FILL DEPTH CONTOURS (0.5m INTERVALS)
 - 1.0 ——— CUT DEPTH CONTOURS (0.5m INTERVALS)
 - - - - - CUT/FILL INTERFACE
 - [Brown Hatched Box] CUT AREA
 - [Green Hatched Box] FILL AREA
 - [Red Dashed Box] ADDITIONAL MINOR CUT FOR INFILTRATION BASINS
 - [Thick Black Line] SITE BOUNDARY



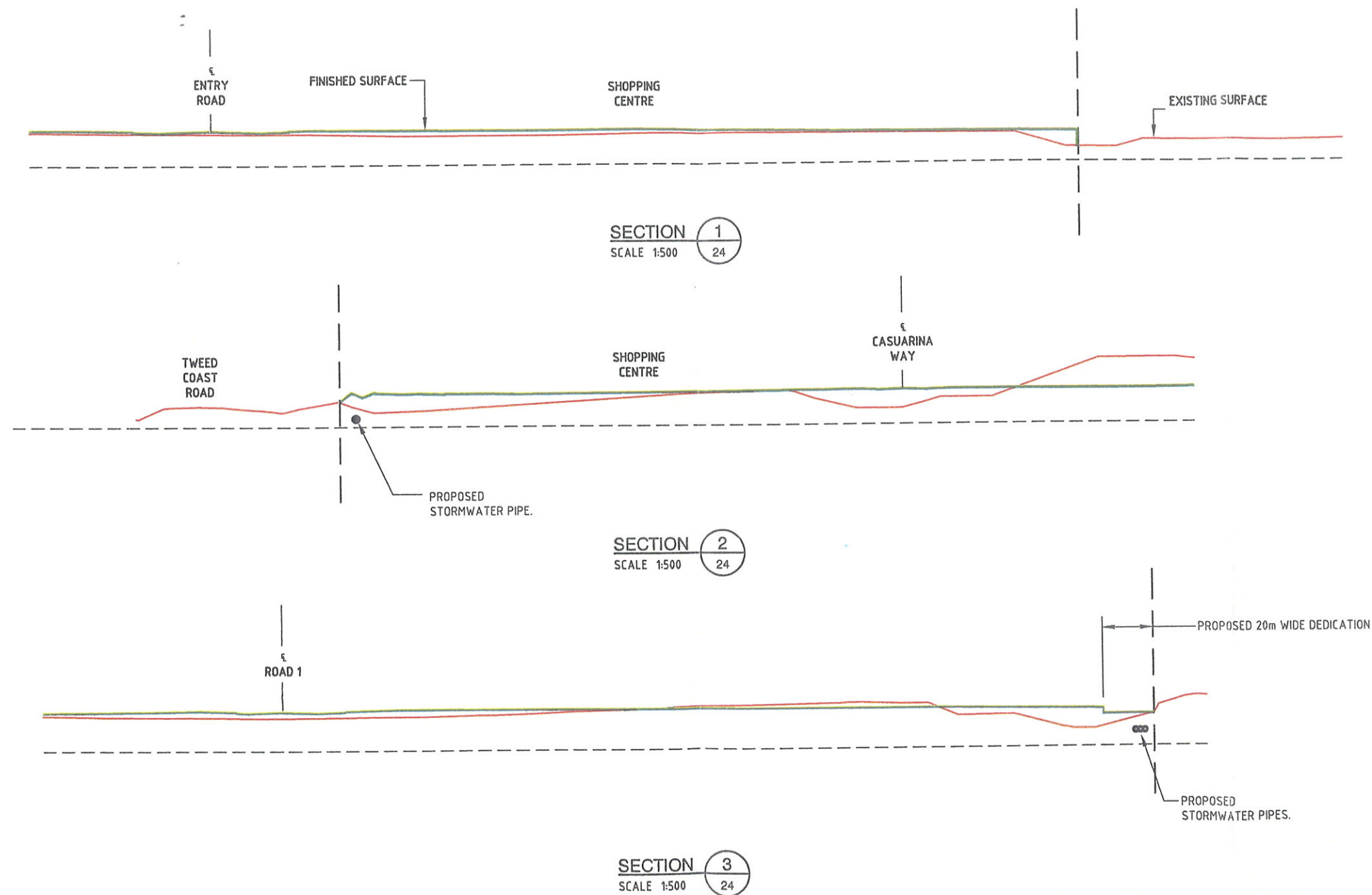
© Cardno (Qld) Pty Ltd All Rights Reserved 2002.
 Copyright in the whole and every part of this drawing belongs to Cardno (Qld) Pty Ltd and may not be used, sold, transferred, copied or reproduced in whole or in part in any manner or form or on any media, to any person other than by agreement with Cardno (Qld) Pty Ltd.

This document is produced by Cardno (Qld) Pty Ltd solely for the benefit of and use by the client in accordance with the terms of the retainer. Cardno (Qld) Pty Ltd does not and shall not assume any responsibility or liability whatsoever to any third party arising out of any use or reliance by third party on the content of this document.

Cardno
 Cardno (Qld) Pty Ltd ACN: 051 074 992
 Commercial Centre, Isle of Capri
 Gold Coast City, Queensland 4217
 Email: gco@cardno.com.au

KINGS BEACH (No. 2) PTY LTD	
CASUARINA BEACH TOWN CENTRE	
DA SUBMISSION	
SCALE :- 1:2000	A1
DATE :- 10 JULY, 2007	REV. K
DRAWING No. 7079/4/1-FIG DA25	

FIGURE No. DA25K(21/12/09)
CUT / FILL DEPTHS LAYOUT PLAN



10 5 0 10 20 30 40m
SCALE BEFORE REDUCTION 1:500

© Cardno (Qld) Pty Ltd All Rights Reserved 2002.
Copyright in the whole and every part of this drawing belongs to Cardno (Qld) Pty Ltd and may not be used, sold, transferred, copied or reproduced in whole or in part in any manner or form or on any media, to any person other than by agreement with Cardno (Qld) Pty Ltd.

This document is produced by Cardno (Qld) Pty Ltd solely for the benefit of and use by the client in accordance with the terms of the retainer. Cardno (Qld) Pty Ltd does not and shall not assume any responsibility or liability whatsoever to any third party arising out of any use or reliance by third party on the content of this document.

Cardno
Cardno (Qld) Pty Ltd ACN: 051 074 992
Commercial Centre, Isle of Capri
Gold Coast City, Queensland 4217
Email: gco@cardno.com.au

KINGS BEACH (No. 2) PTY LTD

CASUARINA BEACH
TOWN CENTRE
DA SUBMISSION

SCALE 1:500 A1
DATE 10 JULY, 2007 REV. 1
DRAWING No.
7079/2/1-FIG DA26

FIGURE No. DA26I(21/12/09)
SITE CROSS SECTIONS



© Cardno (Qld) Pty Ltd All Rights Reserved 2002.

Copyright in the whole and every part of this drawing belongs to Cardno (Qld) Pty Ltd and may not be used, sold, transferred, copied or reproduced in whole or in part in any manner or form or on any media, to any person other than by agreement with Cardno (Qld) Pty Ltd.

This document is produced by Cardno (Qld) Pty Ltd solely for the benefit of and use by the client in accordance with the terms of the retainer. Cardno (Qld) Pty Ltd does not and shall not assume any responsibility or liability whatsoever to any third party arising out of any use or reliance by third party on the content of this document.



Cardno (Qld) Pty Ltd ACN: 051 074 992
Commercial Centre, Isle of Capri
Gold Coast City, Queensland 4217
Email: gco@cardno.com.au

KINGS BEACH (No. 2) PTY LTD

CASUARINA BEACH
TOWN CENTRE
DA SUBMISSION

SCALE: 1:1000 A1
DATE: 10 JULY, 2007 REV. K
DRAWING No.
7079/4/1-FIG DA36

FIGURE No.DA36K(06/01/10)

CATCHMENT AREAS AND
DRAINAGE PATHS



20 10 0 20 40 60 80m
SCALE BEFORE REDUCTION 1: 1000

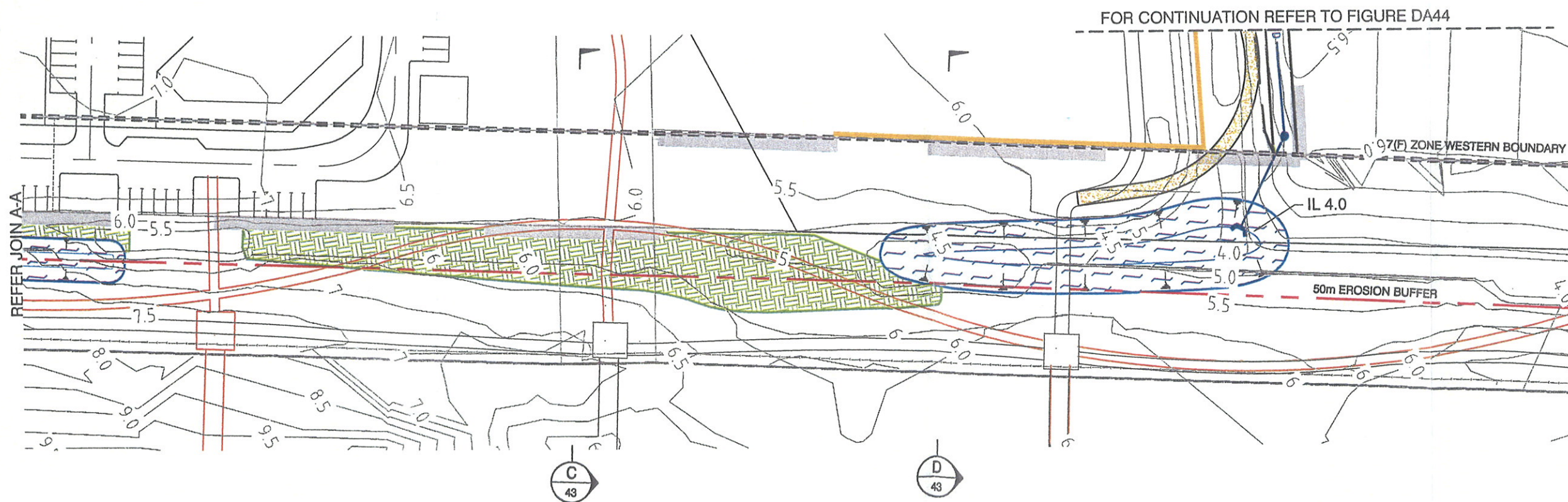
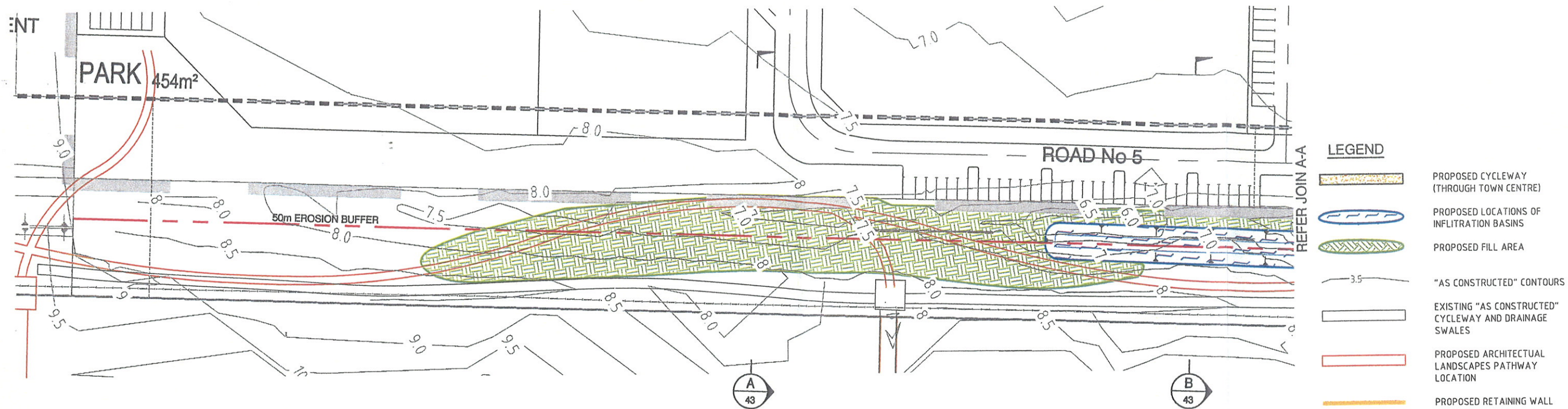
© Cardno (Qld) Pty Ltd All Rights Reserved 2002.
Copyright in the whole and every part of this drawing belongs to Cardno (Qld) Pty Ltd and may not be used, sold, transferred, copied or reproduced in whole or in part in any manner or form or on any media, to any person other than by agreement with Cardno (Qld) Pty Ltd.
This document is produced by Cardno (Qld) Pty Ltd solely for the benefit of and use by the client in accordance with the terms of the retainer. Cardno (Qld) Pty Ltd does not and shall not assume any responsibility or liability whatsoever to any third party arising out of any use or reliance by third party on the content of this document.

Cardno
Cardno (Qld) Pty Ltd ACN: 051 074 992
Commercial Centre, Isle of Copri
Gold Coast City, Queensland 4217
Email: gco@cardno.com.au

KINGS BEACH (No. 2) PTY LTD	
CASUARINA BEACH	
TOWN CENTRE	
DA SUBMISSION	
SCALE :- 1:1000	A1
DATE :- 17 DECEMBER 2007	REV. N
DRAWING No.	
7079/4/1-FIG DA40	

FIGURE No.DA40N(21/12/09)

DEDICATION AND EASEMENT PLAN



10 5 0 10 20 30 40m
SCALE BEFORE REDUCTION 1:500

© Cardno (Qld) Pty Ltd All Rights Reserved 2008
Copyright in the whole and every part of this drawing belongs to Cardno (Qld) Pty Ltd and may not be used, sold, transferred, copied or reproduced in whole or in part in any manner or form or on any media, in any person other than by agreement with Cardno (Qld) Pty Ltd.

This document is produced by Cardno (Qld) Pty Ltd solely for the benefit of and use by the client in accordance with the terms of the retainer. Cardno (Qld) Pty Ltd does not and shall not assume any responsibility or liability whatsoever to any third party arising out of any use or reliance by third party on the content of this document.

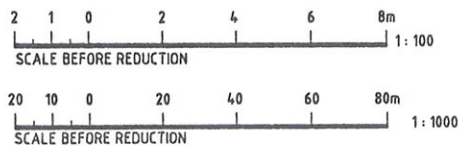
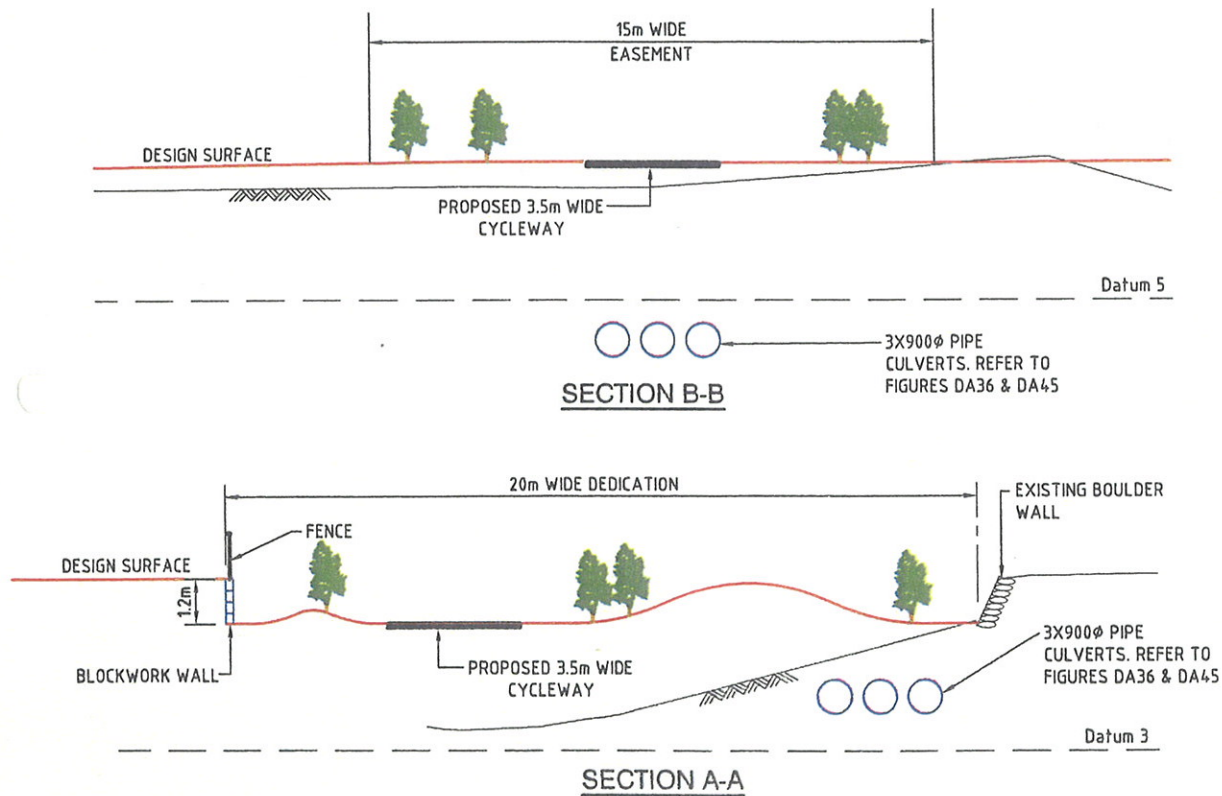
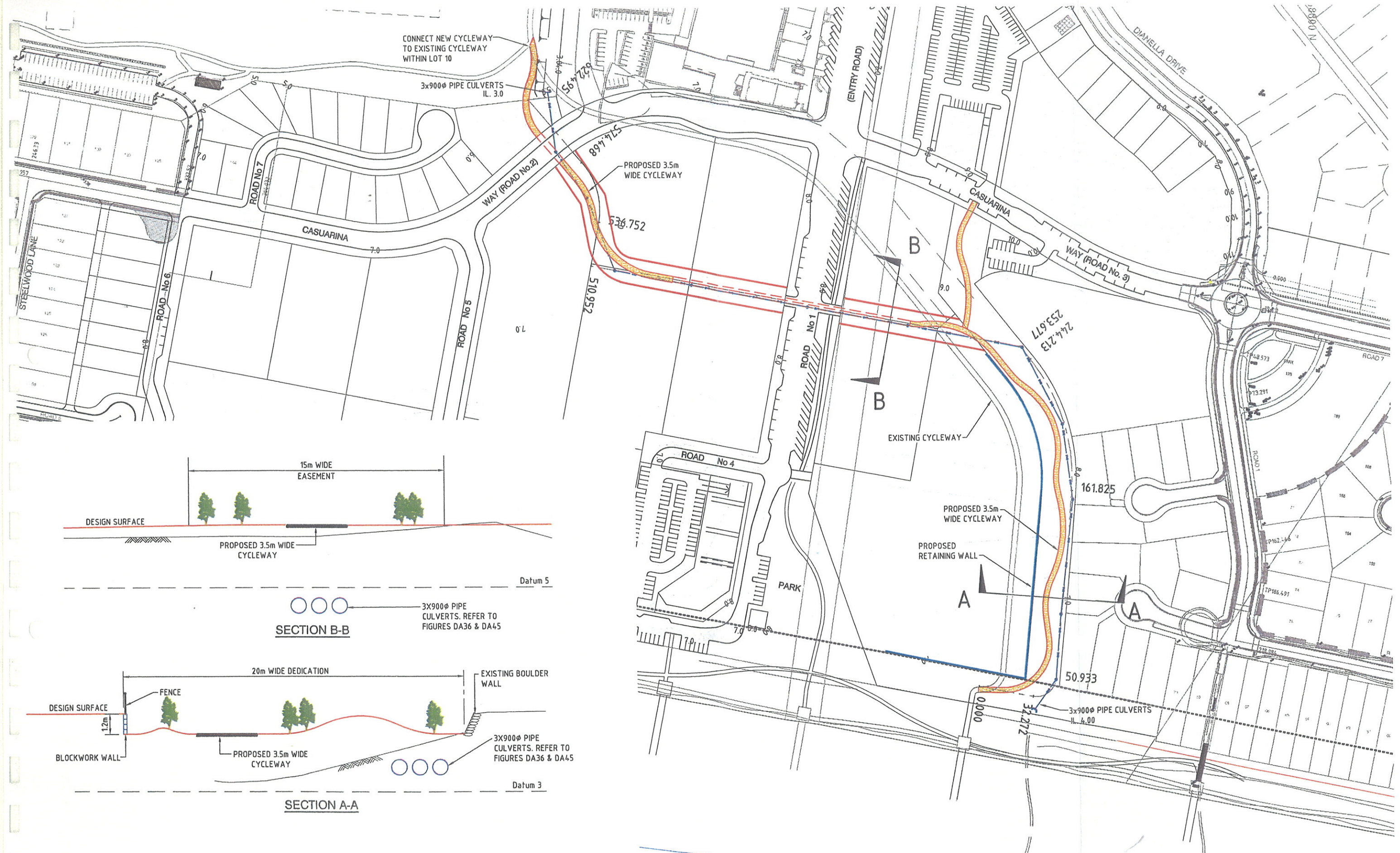
Cardno
Cardno (Qld) Pty Ltd ACN: 051 074 992
Commercial Centre, Isle of Copri
Gold Coast City, Queensland 4217
Email: go@cardno.com.au

KINGS BEACH (No. 2) PTY LTD

CASUARINA BEACH
TOWN CENTRE
DA SUBMISSION

SCALE: 1:500 A1
DATE: 20 NOVEMBER, 2008 REV. B
JOB No. 7079/4/1-FIG DA42

FIGURE No. DA42B (21/12/09)
PROPOSED FRONTAL CYCLEWAY/
INFILTRATION BASINS LAYOUT PLAN



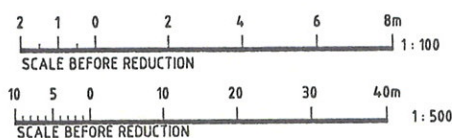
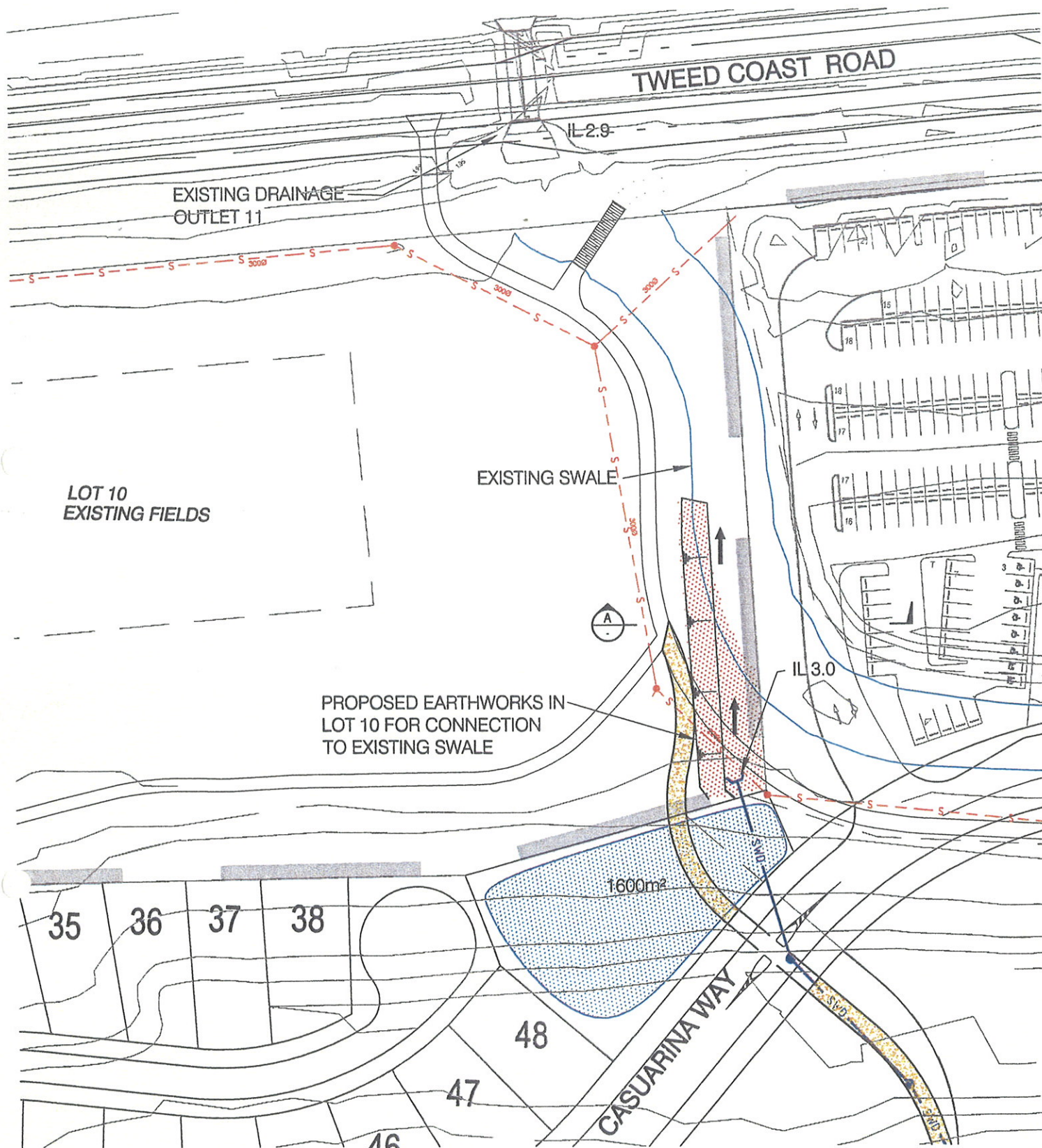
© Cardno (Qld) Pty Ltd All Rights Reserved 2008
 Copyright in the whole and every part of this drawing belongs to Cardno (Qld) Pty Ltd and may not be used, sold, transferred, copied or reproduced in whole or in part in any manner or form or on any media, to any person other than by agreement with Cardno (Qld) Pty Ltd.

This document is produced by Cardno (Qld) Pty Ltd solely for the benefit of and use by the client in accordance with the terms of the retainer. Cardno (Qld) Pty Ltd does not and shall not assume any responsibility or liability whatsoever to any third party arising out of any use or reliance by third party on the content of this document.

Cardno
 Cardno (Qld) Pty Ltd ACN: 051 074 992
 Commercial Centre, Isle of Capri
 Gold Coast City, Queensland 4217
 Email: goo@cardno.com.au

KINGS BEACH (No. 2) PTY LTD	
CASUARINA BEACH	
TOWN CENTRE	
DA SUBMISSION R.F.1	
SCALE -- AS SHOWN	A1
DATE -- 20 NOVEMBER, 2008	REV. D
JOB No.	7079/4/1-FIG DA44

FIGURE No. DA44D (21/12/09)
PROPOSED CYCLEWAY/DRAINAGE
RE-ALIGNMENT LAYOUT PLAN

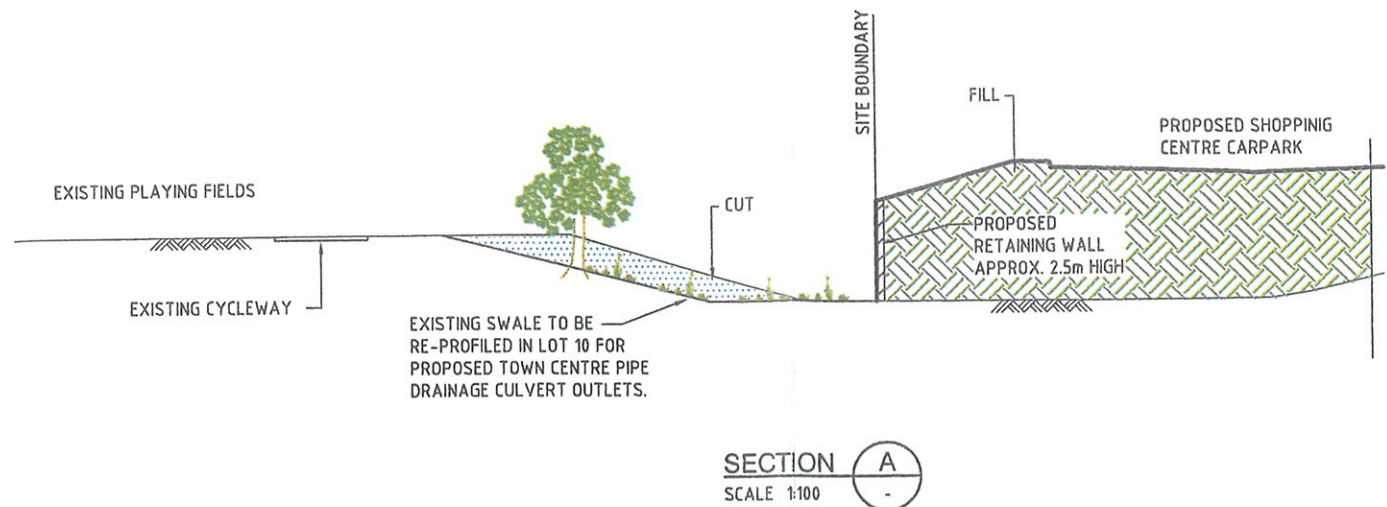


© Cardno (Qld) Pty Ltd All Rights Reserved 2008
 Copyright in the whole and every part of this drawing belongs to Cardno (Qld) Pty Ltd and may not be used, sold, transferred, copied or reproduced in whole or in part in any manner or form or on any media, to any person other than by agreement with Cardno (Qld) Pty Ltd.

This document is produced by Cardno (Qld) Pty Ltd solely for the benefit of and use by the client in accordance with the terms of the retainer. Cardno (Qld) Pty Ltd does not and shall not assume any responsibility or liability whatsoever to any third party arising out of any use or reliance by third party on the content of this document.

Cardno
 Cardno (Qld) Pty Ltd ACN: 051 074 992
 Commercial Centre, Isle of Capri
 Gold Coast City, Queensland 4217
 Email: gco@cardno.com.au

CAD FILE NAME: G:\7079\04\10\DA Approval\November Amendments\70790401DA46.dwg



LEGEND

- PROPOSED LOCATIONS OF INFILTRATION BASINS
- PROPOSED STORMWATER DRAINAGE
- PROPOSED DESIGN CONTOURS
- EXISTING SWALE
- EXISTING CYCLEWAY
- PROPOSED CYCLEWAY
- EXISTING SEWER

KINGS BEACH (No. 2) PTY LTD

CASUARINA BEACH
 TOWN CENTRE
 DA SUBMISSION R.F.I

SCALE: 1:500
 DATE: 20 NOVEMBER, 2008
 JOB No. 7079/4/1-FIG DA46

FIGURE No. DA46B (06/11/09)

PROPOSED ADDITIONAL
 WORKS IN LOT 10