

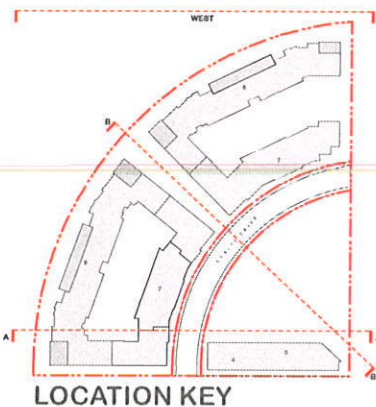
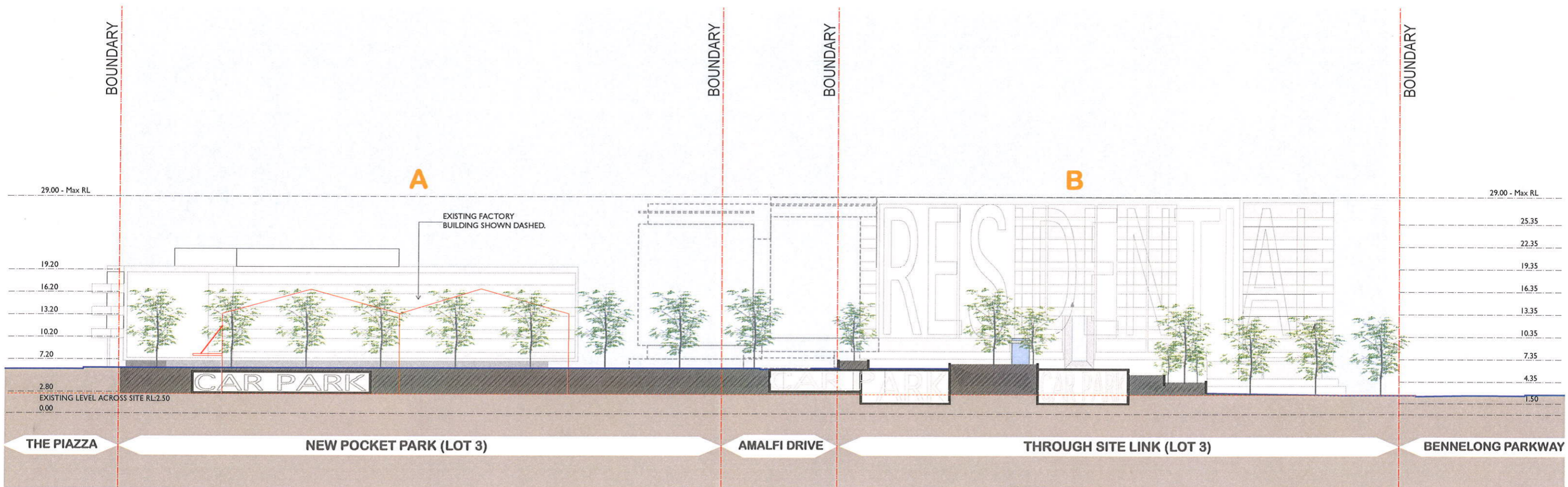
| | | |
|---|--|---|
| NOMINATED ARCHITECT JLG SCALE 1:250 @ A1 1:500 @ A3 | PRINTED 03.05.10 Henlia No 3 Pty Ltd | Nicholas Turner 4188 ESD Quality Endorsed Company ISO 9001 2000 Licence Number 4188 Cad File Name |
|---|--|---|

| No. | Date | Appr | Revision Notes |
|-----|----------|------|--------------------------|
| F | 3/5/10 | kjd | Building height updated |
| E | 17/11/09 | kjd | Concept Plan submission |
| D | 07/07/09 | | Stage 1 DA Issue |
| C | - | | |
| B | 30/06/09 | | Issued for Co-ordination |
| A | 08/12/08 | KJD | Issued for Information |

NSW GOVERNMENT Planning
 Issued under the Environmental Planning and Assessment Act 1979
 Approved Application No. MP09/0160
 granted on the 22/06/2010
 Signed..... HS
 Sheet No. 15 of 08053 19
 Job No. 08053
 Drawing No. DA31 Rev F
TURNER+ASSOCIATES
 L1 410 CROWN STREET SURRY HILLS NSW 2010 T 02 8568 0000 F 02 8568 0088

Bay Park

23 Bennelong Parkway Wentworth Point NSW 2127



0 10m 25m

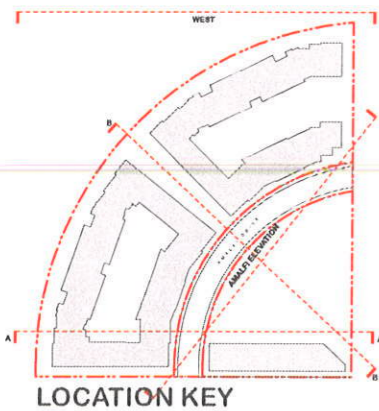
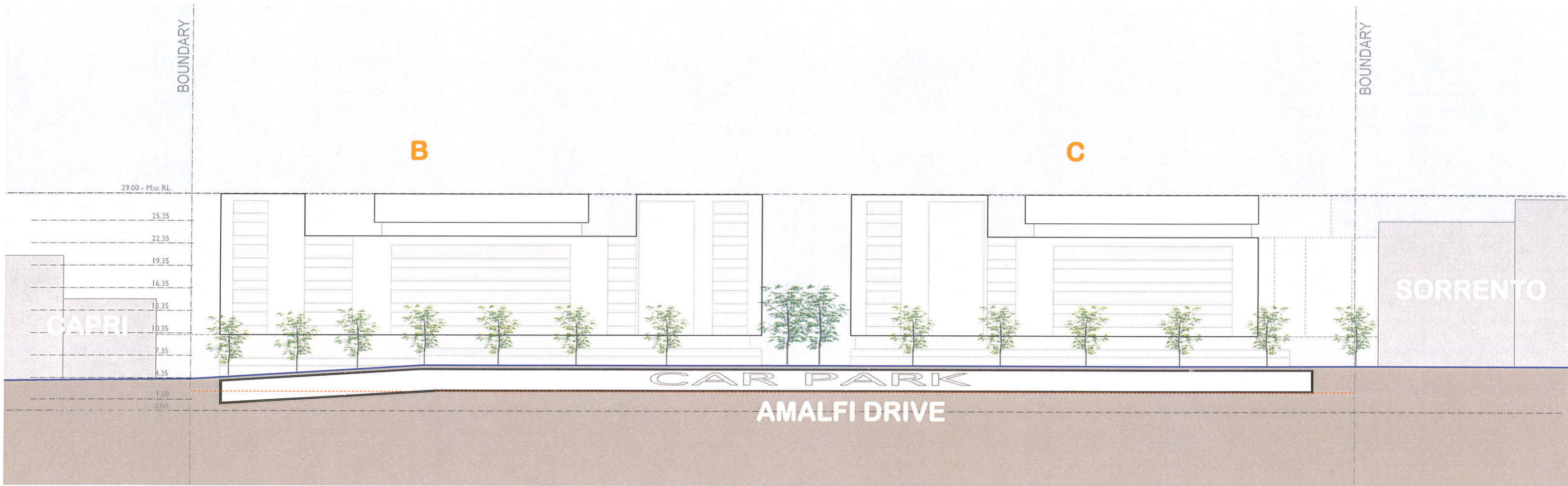
NSW GOVERNMENT
Planning
Issued under the Environmental Planning and Assessment Act 1979
Approved Application No. MP09-0160
granted on the 22/06/2010
Signed [Signature]
Sheet No. 16 of 19


| | |
|--|---|
| <small> HONMATED ARCHITECT Drawn By: JLG SCALE 1:250 @ A1 1:500 @ A3 PRINTED 03.05.10 Henlia No 3 Pty Ltd <small>This drawing is copyright and shall remain the property of Turner+Associates Architects. No reproduction without permission. Unless noted otherwise this drawing is NOT FOR CONSTRUCTION. Do not scale from drawings. Tolerances shall take precedence.</small> </small> | <small> Nihilus Turner 6005 DDU Quality Endorsed Company ISO 9001 2000 Licence Number 4188 Call File Name PRINTED 03.05.10 Henlia No 3 Pty Ltd <small>This drawing is copyright and shall remain the property of Turner+Associates Architects. No reproduction without permission. Unless noted otherwise this drawing is NOT FOR CONSTRUCTION. Do not scale from drawings. Tolerances shall take precedence.</small> </small> |
|--|---|

| No. | Date | Appr | Revision Notes |
|-----|----------|------|--------------------------|
| F | 3/5/10 | kjd | Building height updated |
| E | 17/11/09 | kjd | Concept Plan submission |
| D | 07/07/09 | - | Stage 1 DA Issue |
| C | - | - | - |
| B | - | - | - |
| A | 30/06/0 | - | Issued for Co-ordination |

| | |
|-------------------------|--|
| Illustrative Section_BB | |
|-------------------------|--|

| | | |
|----------------------------|-----------------|--|
| Job No. 08053 | Rev F | Bay Park 23 Bennelong Parkway Homebush Bay NSW 2127 TURNER+ASSOCIATES <small>L1 410 CROWN STREET SURRY HILLS NSW 2010 T 02 8668 0000 F 02 8668 0088</small> |
| Drawing No. DA32 | | |




NSW GOVERNMENT
 Planning

Issued under the Environmental Planning and Assessment Act 1979

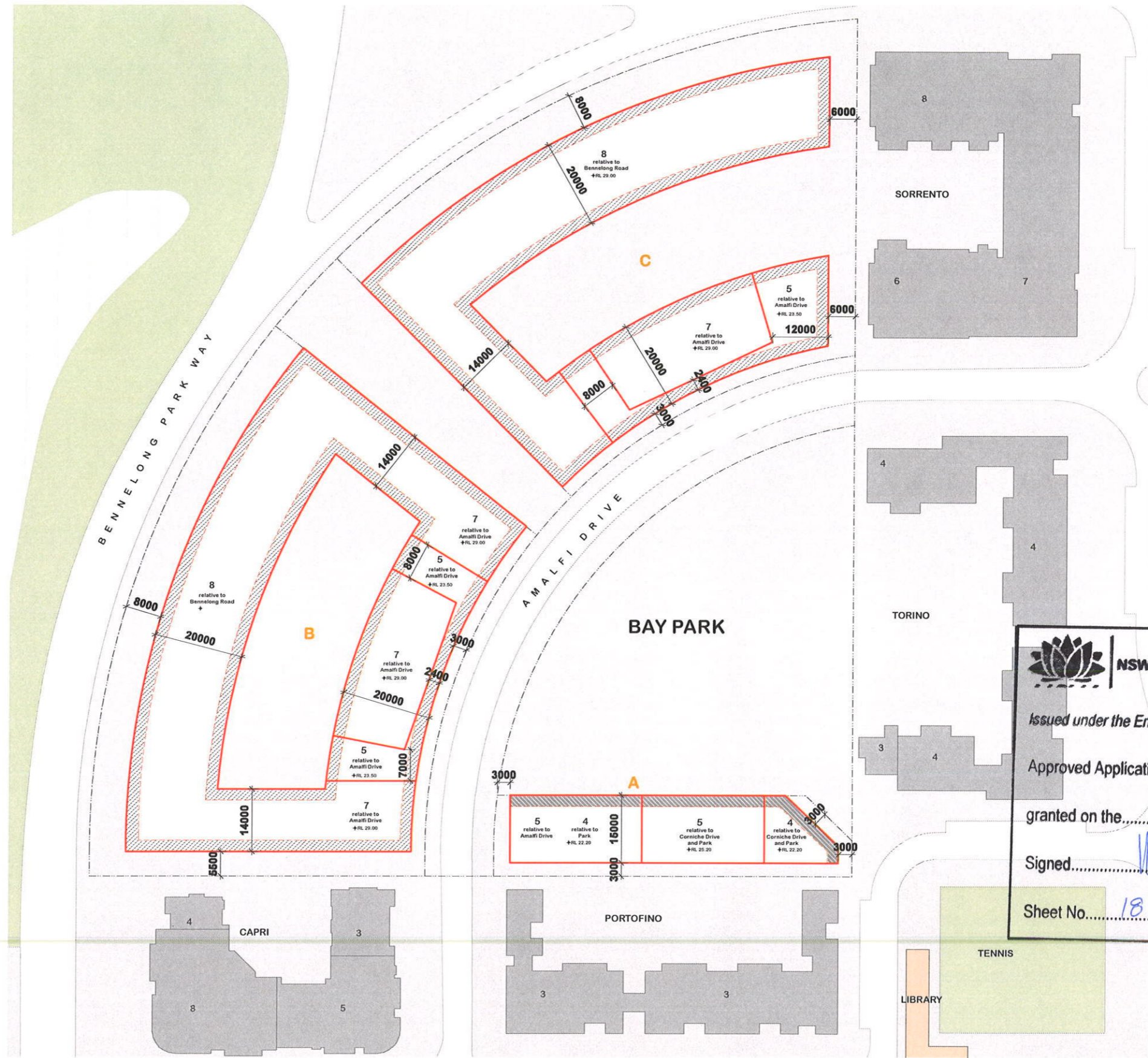
Approved Application No. MP09_0160

granted on the 22/09/2010

Signed KS

Sheet No. 17 of 19

| | | | | | | | | | |
|---|--|---|--|---|--|---|--|---|--|
| <small>NOMINATED ARCHITECT</small> <small>DDO Quality Endorsed Company ISO 9001:2000 Licence Number 4118</small> <small>Number 4695</small> <small>Henlia No 3 Pty Ltd</small> | | <small>PRINTED</small> <small>11.05.10</small> | | <small>Job No.</small> 08053 | | Bay Park <small>23 Bennelong Parkway Wentworth Point NSW 2127</small> | | | |
| <small>SCALE</small> 1:250 @ A1 1:500 @ A3 | | <small>PRINTED</small> 11.05.10 | | <small>No.</small> A <small>Date</small> 11/05/10 <small>Appr</small> kjd <small>Revision Notes</small> Concept Plan submission | | <small>Drawing No.</small> DA33 <small>Rev</small> A | | | |
| <small>This drawing is copyright and shall remain the property of Turner+Associates Architects. No reproduction without permission. Unless noted otherwise this drawing is NOT FOR CONSTRUCTION. Do not scale from drawings. Figure dimensions shall take precedence.</small> | | | | Illustrative Elevation to Amalfi Drive | | | | TURNER+ASSOCIATES <small>L1 410 CROWN STREET SURRY HILLS NSW 2010 T 02 8568 0000 F 02 8568 0088</small> | |



NSW GOVERNMENT Planning

Issued under the Environmental Planning and Assessment Act 1979

Approved Application No. MPO9-0160

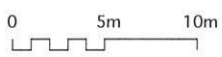
granted on the 22/06/2010

Signed [Signature]

Sheet No. 18 of 19

BAY PARK ENVELOPE - PLAN

- LEGEND**
- Site boundary
 - Predominant facade line
 - Zone for re-entrant balconies / articulation - min 2.5m deep.
 - Zone for salient balconies / articulation - min 2.5m deep



| | | | |
|---|---|---|--|
| NOMINATED ARCHITECT Drawn By: <u> </u> Filename: <u> </u> Cad File Name: <u> </u> SCALE 1:500 @ A1 1:1000 @ A3 PRINTED 03.05.10 Henlia No 3 Pty Ltd <small>This drawing is copyright and shall remain the property of Turner+Associates Architects. No reproduction without permission. Unless noted otherwise this drawing is NOT FOR CONSTRUCTION. Do not scale from drawings. Signed dimensions shall take precedence.</small> | F 3/5/10 kjd Amalfi Drive heights amended E 17/11/09 kjd Concept Plan submission D 07/07/09 Stage 1 DA Issue C - - - B - - - A - - - No. Date Appr Revision Notes | Job No. 08053 Drawing No. DA41 Rev F | Bay Park 23 Benelong Parkway Wentworth Point NSW 2127 TURNER+ASSOCIATES <small>LI 410 CROWN STREET SURRY HILLS NSW 2010 T 02 8568 0000 F 02 8568 0088</small> |
| | Urban Form Control Drawings | | |