

© McQuay and Partners 10

CONCEPT



The Concept

The architectural concept for the development takes its cue from the heritage associated with the industrial uses on the site and the nearby Cooks River. Whilst the industrial uses associated with the site and the surrounds are no longer current there are enough remnants extant, such as the former factory walls and the Mill House, for the story of the site to be developed and told.

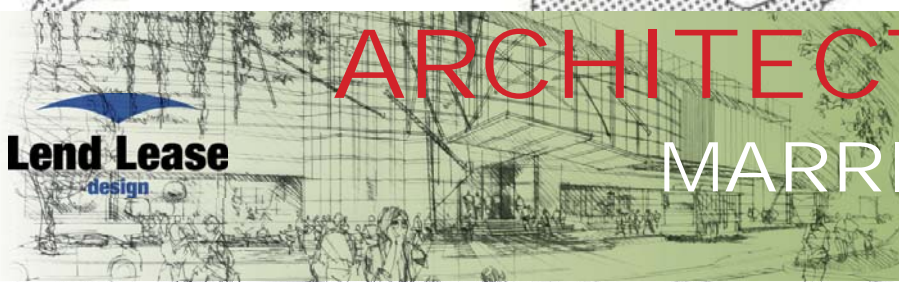
For example the location of the water holes associated with the tannery align more or less with the location of the existing malls. The proposed skylights will evoke the old water holes by bringing pools of natural light into the centre. Such an idea would underpin an internal architectural concept.

Similarly, the Cooks River story together with the Gumbramorra Creek and swamp underpin the external architectural concept for the facades and the landscape design for the public domain.

External architectural concept

We took the idea of water, sustainability (or green), as in ecological and environmental sustainability, within an industrial context as the basis of our concept for the facades. Rather than interpret a water theme literally we decided to abstract the idea and think about what effect water would have on an object sitting on our site. What would water, in this case the water from the Gumbramorra Creek, do to the facades if water was able to lap, to ebb and flow, at this object over a geological time period? The facades of the proposed building on the Smidmore Street site would have striations and wave-like patterns sculpted over time, there would be smooth parts and rough parts depending on which way the water and eddies passed. The colours on this object would also reflect whether that portion received direct sunlight or not, whether plant material or animals managed to cling to its surface to create colonies and grow.

ARCHITECTURAL CONCEPT - CONCEPT



WATER + GREEN INDUSTRIAL CONTEXT

Gumbramorra Creek
Water Holes
Stormwater Easement
Effects of water:
Erosion
Smoothing out
Accumulates drift material

Mangroves
Recycling
Conservation
Heritage
Water collection/retention
Water reuse
Renewable energy

What the waters left behind.

The concept for the building imagines that the Gumbramorra Creek flooded the area directly to its north. The waters sculpting over time niches and spaces on what would be the facades of the new building. All we've done is inhabit these spaces, left after the waters receded and given them uses.

What did the waters leave behind? Coves, smoothed out niches, sculpted corners, ledges, driftwood and colonies of plant material, striated patterns on the ground and vertical surfaces, ridges, furrows and corrugations.

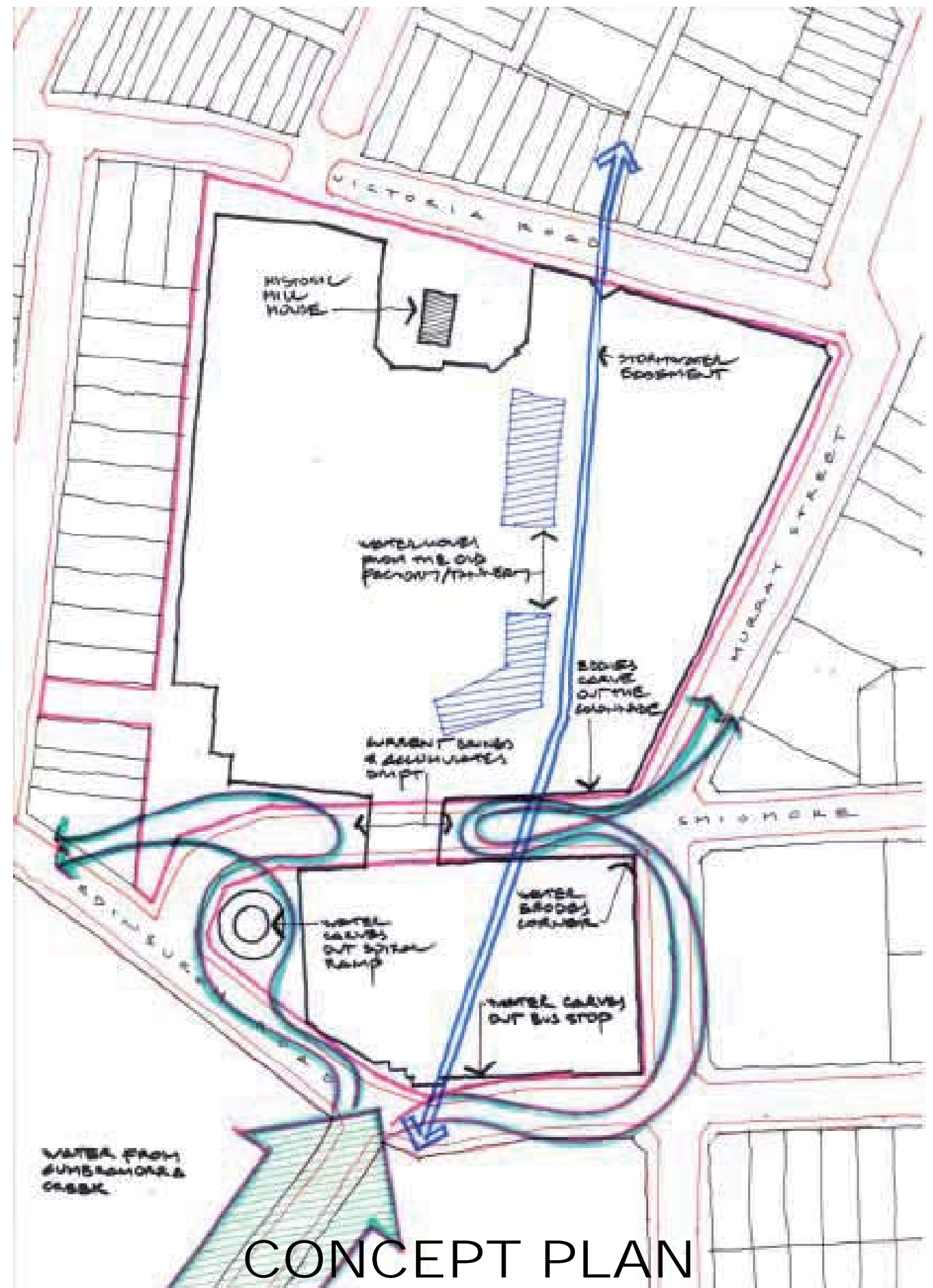
The facades of the Industrial site play with this imagery. The materials selected for their smoothness or roughness or their ability to provide texture and adopt patterns. Patterns and colours are used to create movement on surfaces to evoke the striations, the ridges, furrows and corrugations, left by the currents and eddies of water passing over these surfaces.

The waters also bring drift material which agglomerates in the coves and nooks just as it does on a beach or riverbank. The architectural response is to depict the driftwood as a layer over the facades, a memory of the rhythm of the currents that brought it there. The drift material will be selected from remnants of the existing industrial building. Pieces of timber, parts of trusses, ironwork, girts, beams, rods and angles. This informal chaotic layer or composition provides screening from the sun for the various openings on the façade and canopies for entrances.

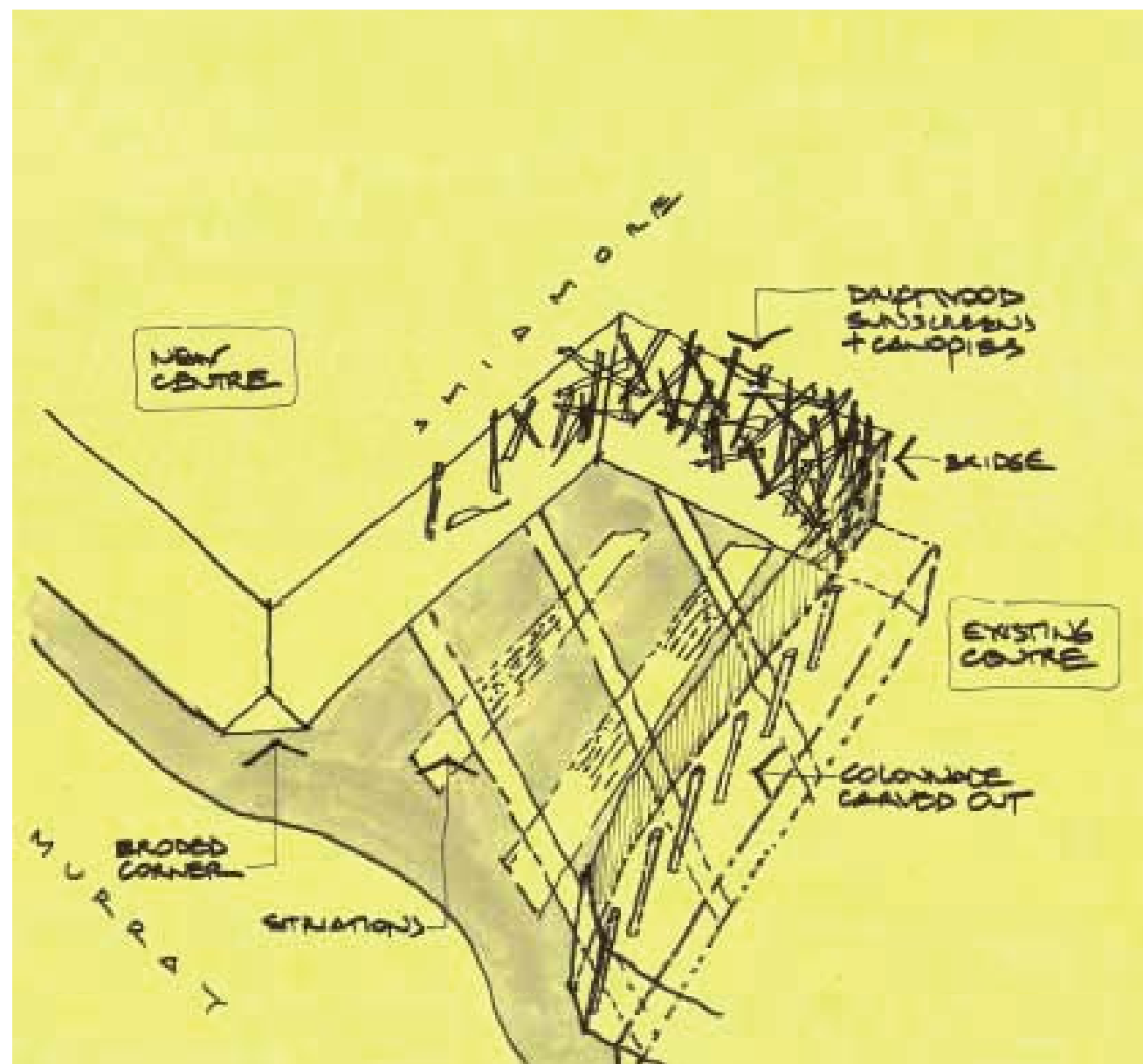
Screens are used in strategic locations much like fishtraps to catch what the currents bring. Some drift material is caught up as well as plant material forming colonies which eventually grow into green walls. These plant colonies create their own pattern within the larger composition of the buildings.

The hardscape patterns and materials are brought into the inside of the malls. The memory of the water holes from the days of the tannery and boot factory are evoked by the ceiling pattern and the way light is brought in through the new skylights.

CONCEPT STORY

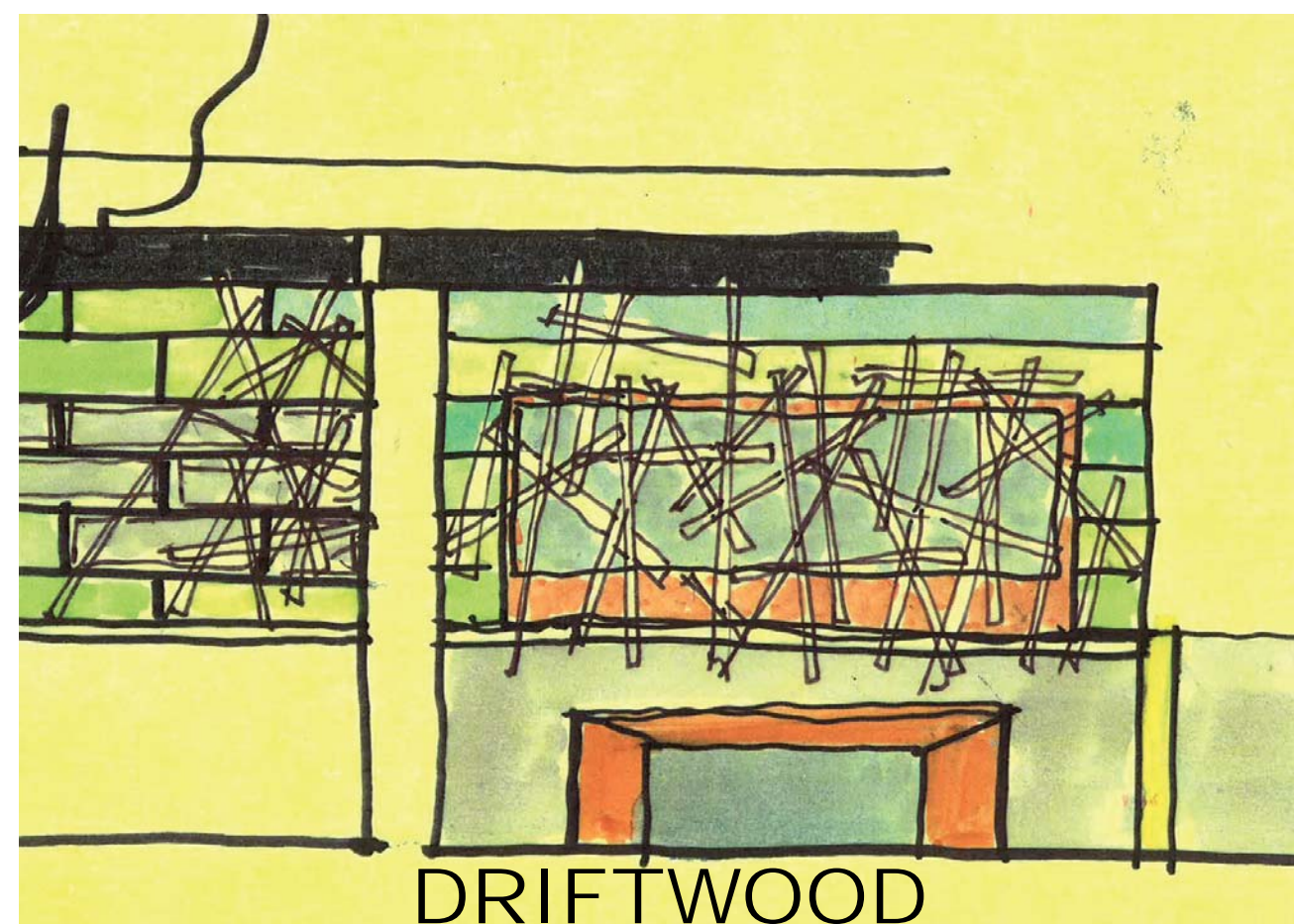


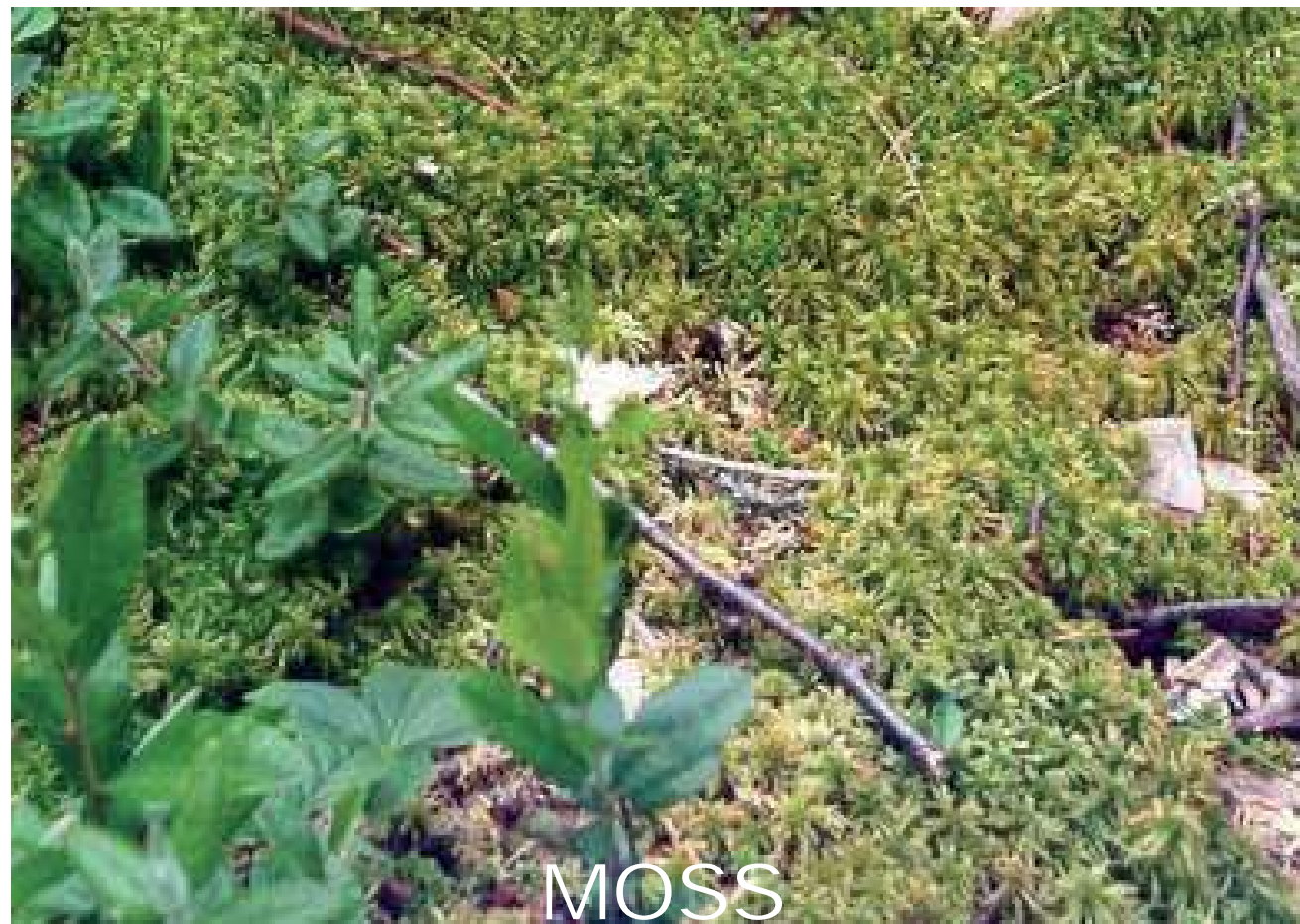
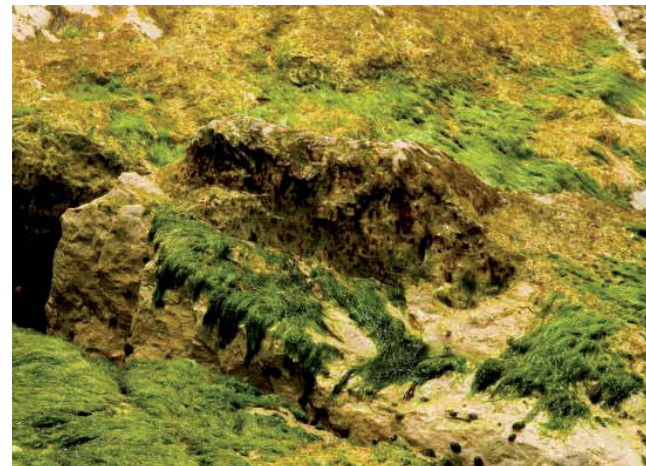
CONCEPT PLAN



EROSION
SCULPTED
CARVED OUT
AGGLOMERATION
BANDING
STRATIFICATION
STRIATION

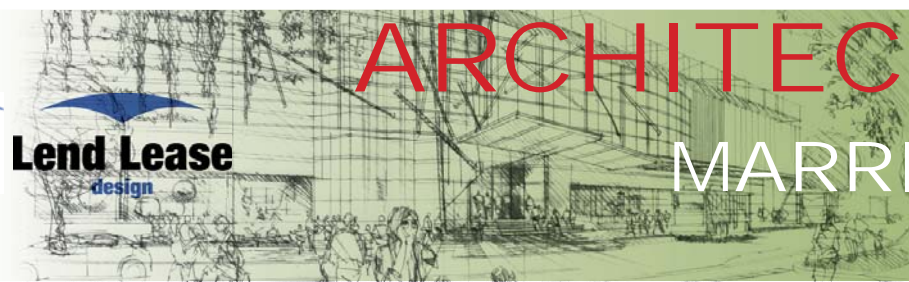
CONCEPT SKETCH

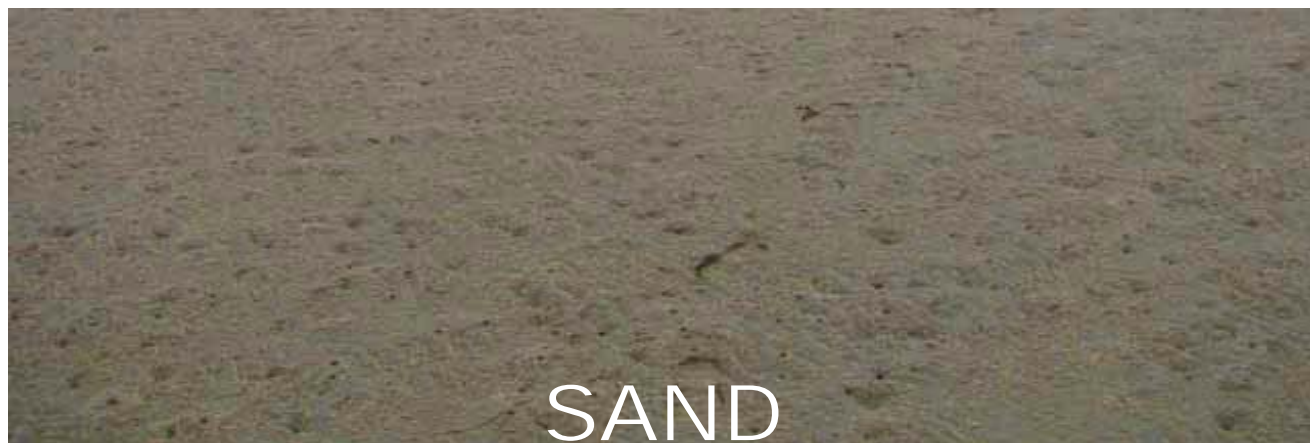
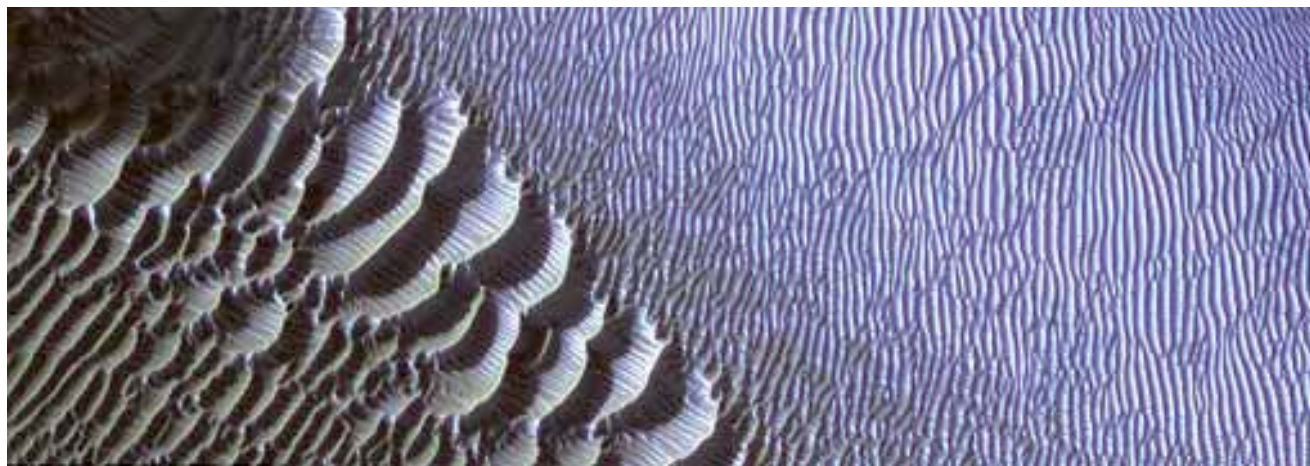
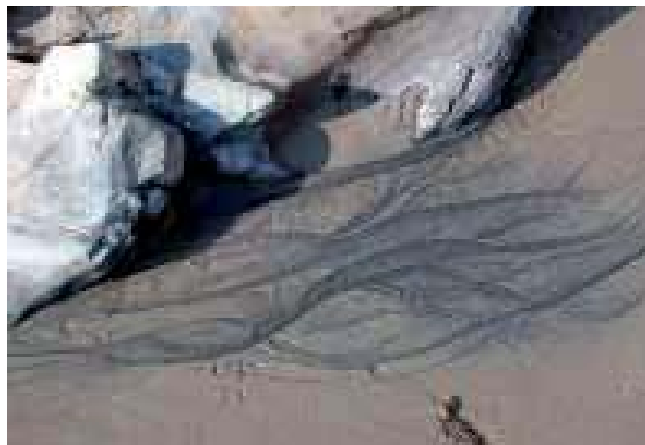




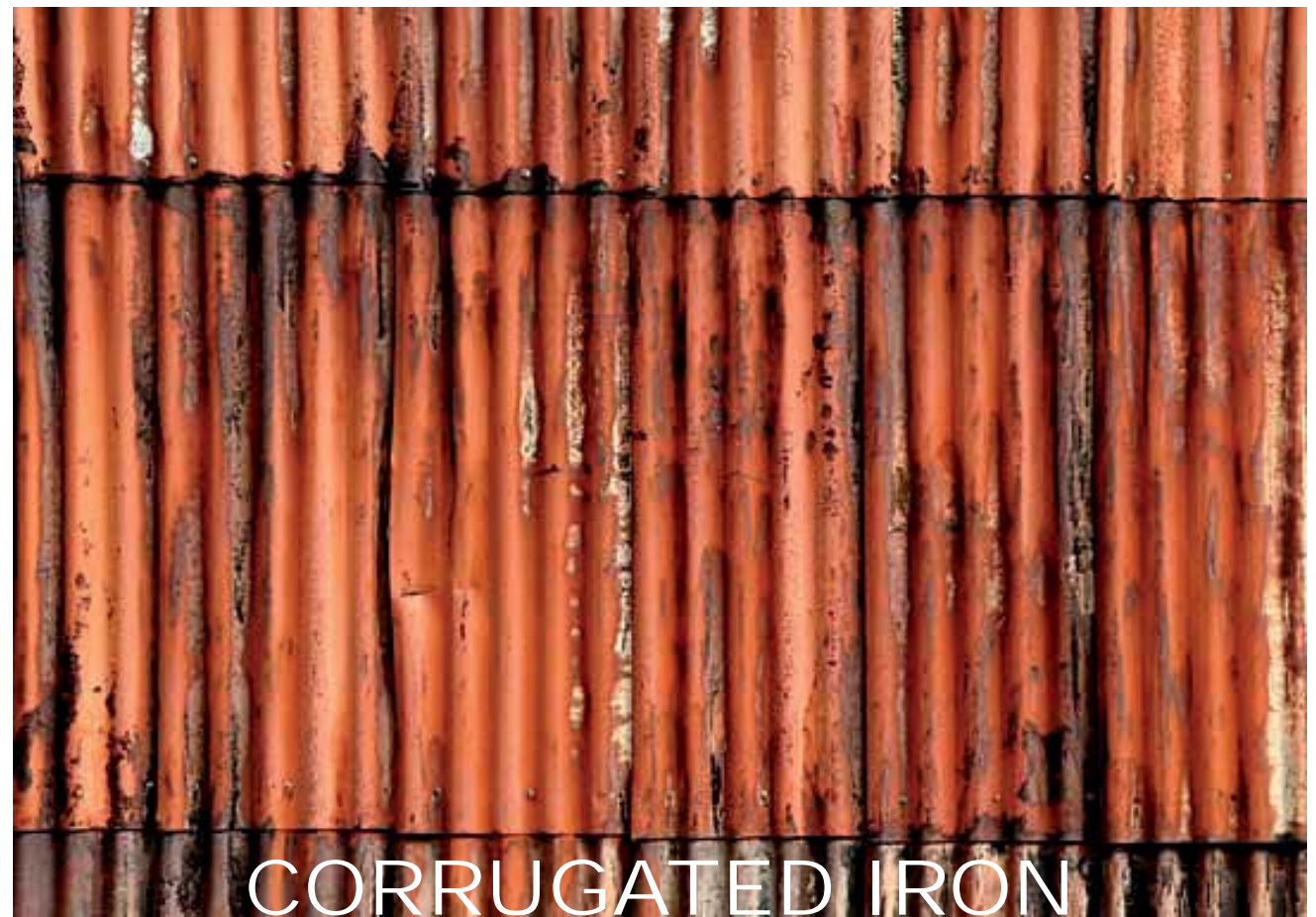
ROCKS

MOSS

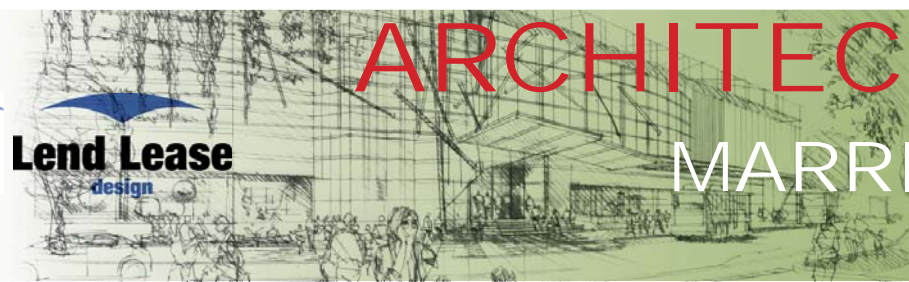


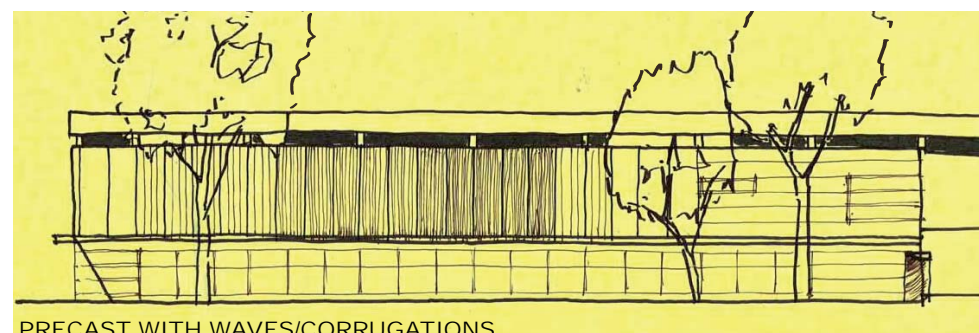


SAND

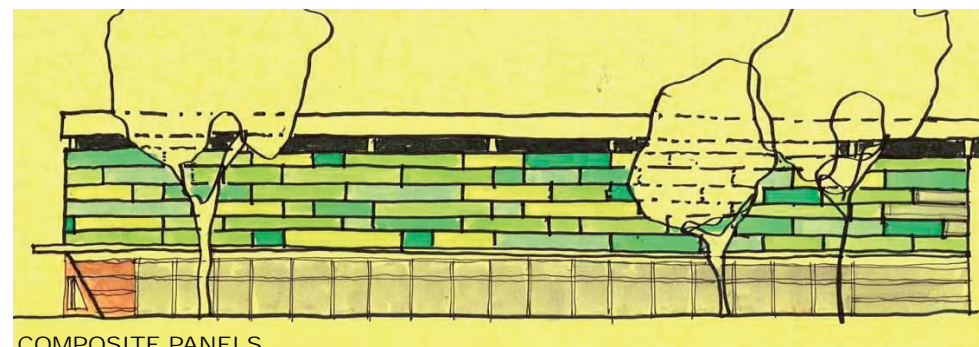


CORRUGATED IRON

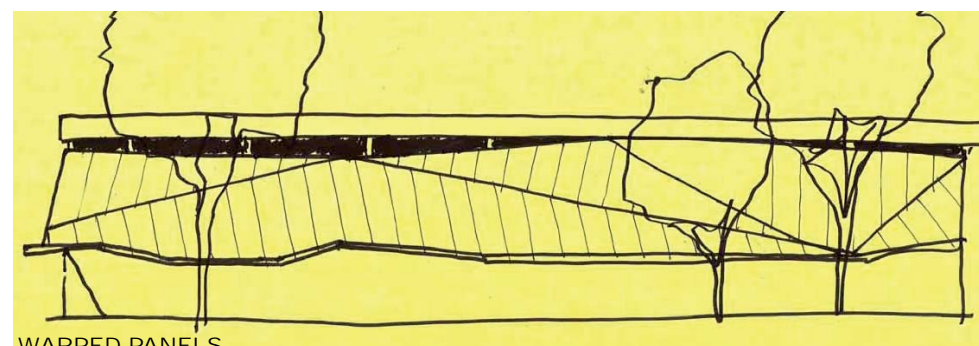




PRECAST WITH WAVES/CORRUGATIONS



COMPOSITE PANELS

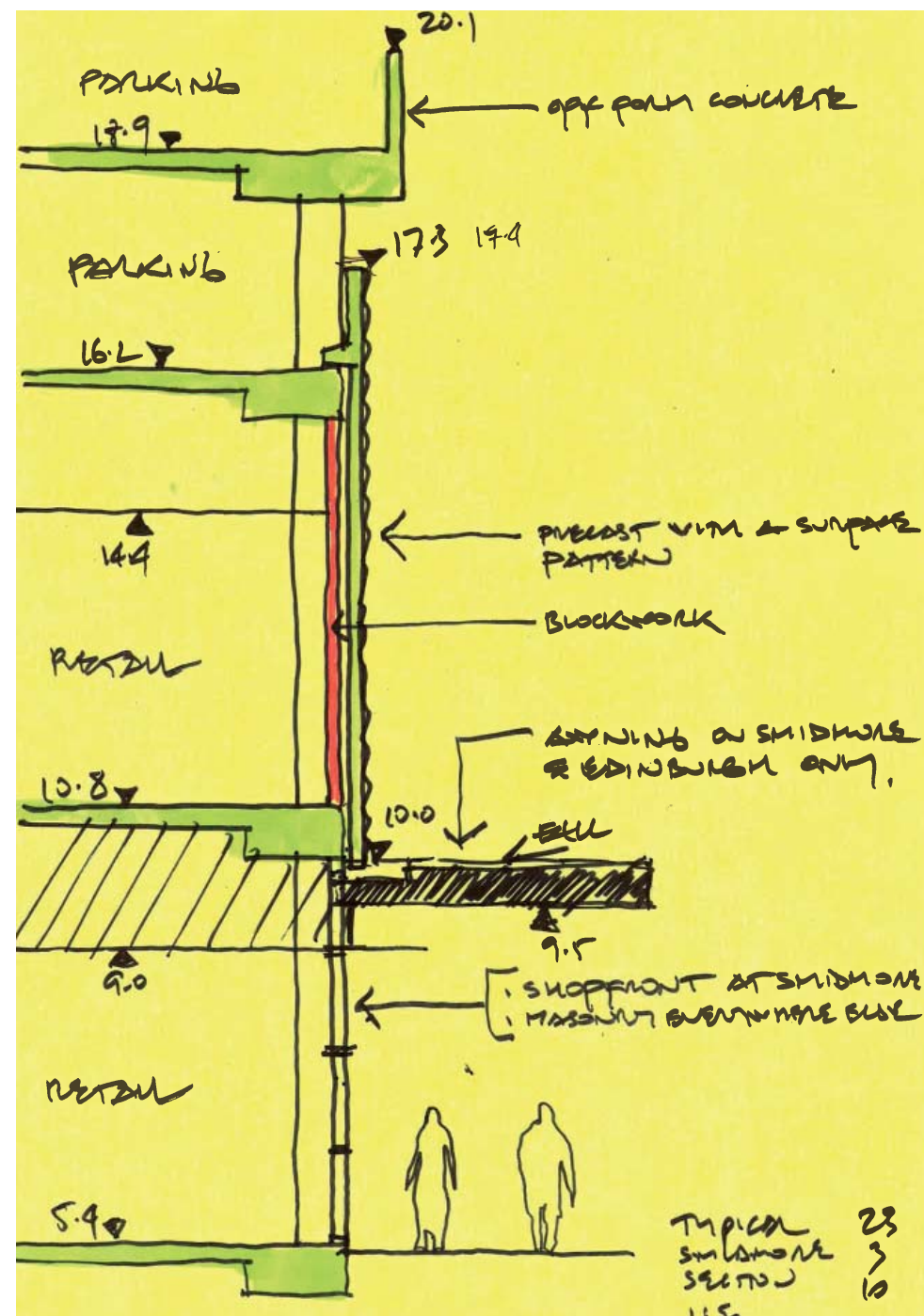


WARPED PANELS



FRAMES

SMIDMORE FACADES



Facades

The facades of the new development on the Smidmore Street site follow a classical tripartite structure with a base, middle and a top. After many iterations of what the facades might want to be (see Smidmore Facades at left) we decided to follow the language of the industrial buildings around the site as well as the methodology of cladding Major retail boxes on the existing Shopping Centre. This language includes having masonry or solid material bases with light weight cladding such as corrugated iron above the lower storey. And in the case of the existing Shopping Centre cladding the Majors with precast panels.

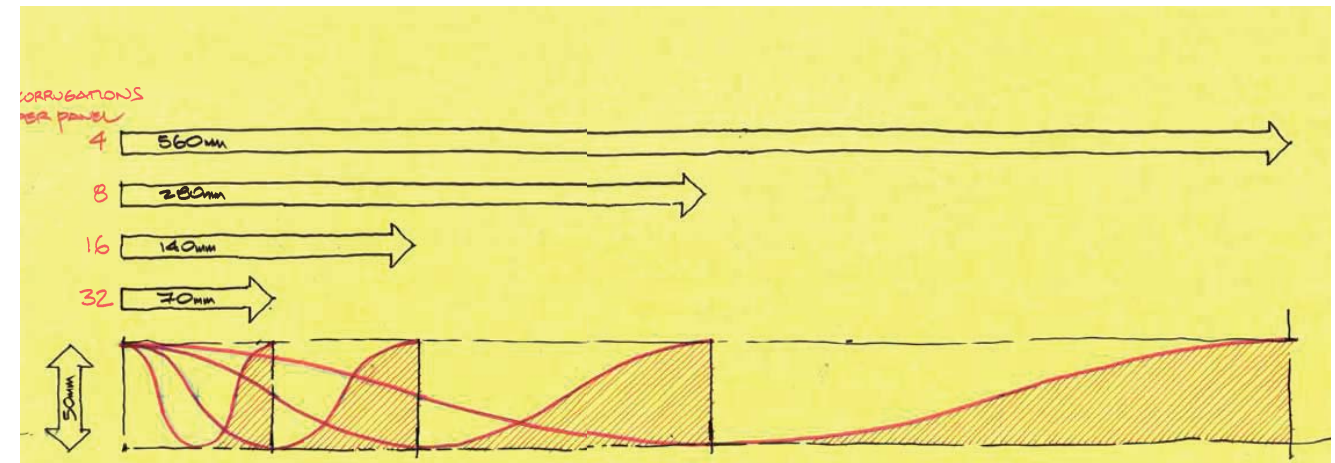
In the case of the new building we have a masonry base, only interrupted by shopfronts or shop windows for activation of the street, with a precast middle above that covering the Supermarket, and an off form concrete ribbon top expressing the car park roof deck. Such a solution also looks to solve some of the practicalities relating to construction methodologies and construction programmes. The precast has an integral pattern (see Facade Ideas over) which reflects both the water concept and the industrial heritage associated with the precinct. The east and southern facades on Smidmore Street are panelised providing a more exposed weathered surface, evoking the layering, the rust and blistering of materials exposed to sun and rain, in contrast to the more smoother textured finish to the precast and the masonry. These panels would be in a range of industrial materials, namely corten steel, corrugated iron and composite panels.

The "driftwood" caught up in the facade screens along Edinburgh Road and along Murray Street as well as Smidmore evoke the recycled nature of some of the material that could be found after the waters recede as well as the industrial aesthetic of the proposal.

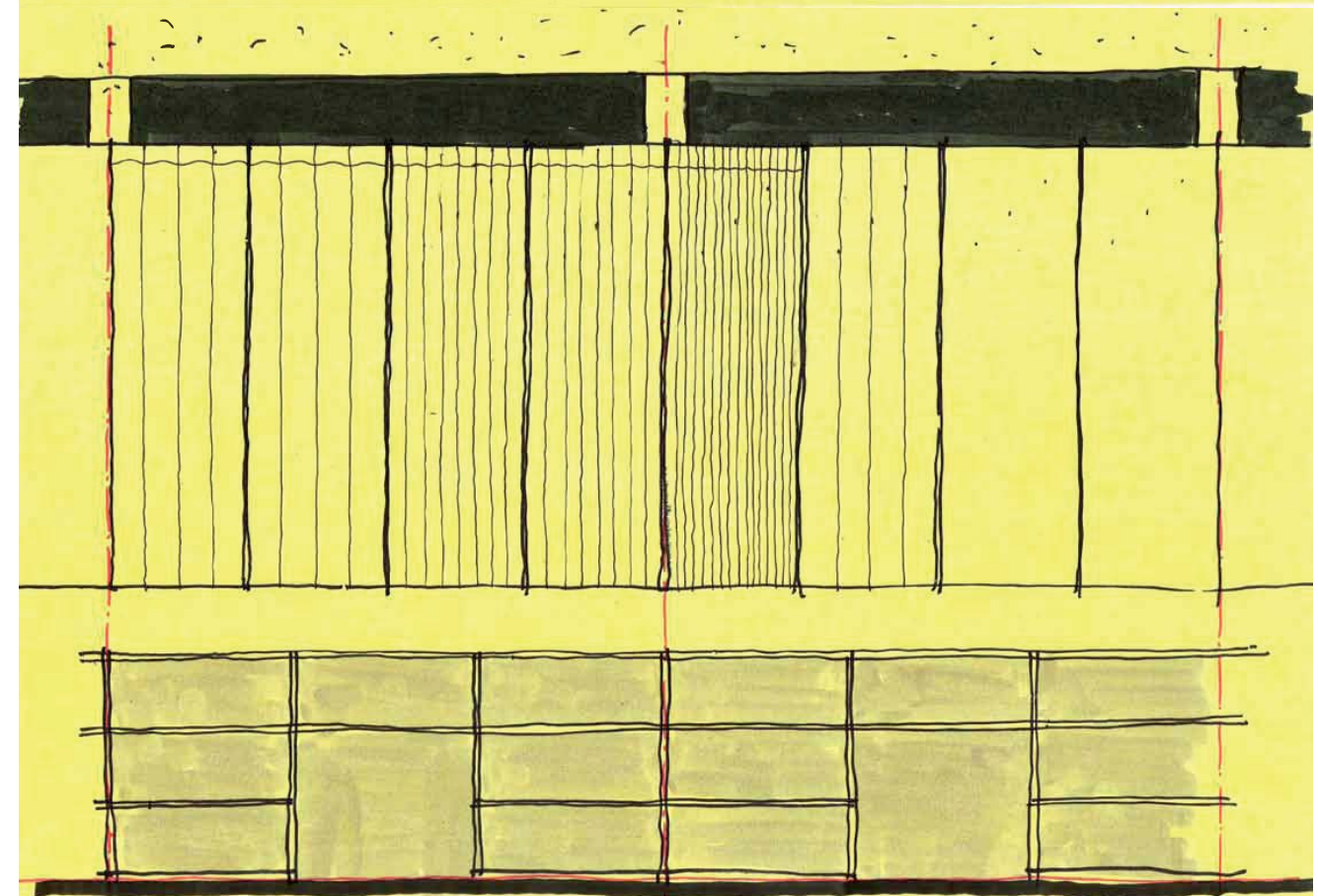
ARCHITECTURAL CONCEPT - FACADES / MATERIALS



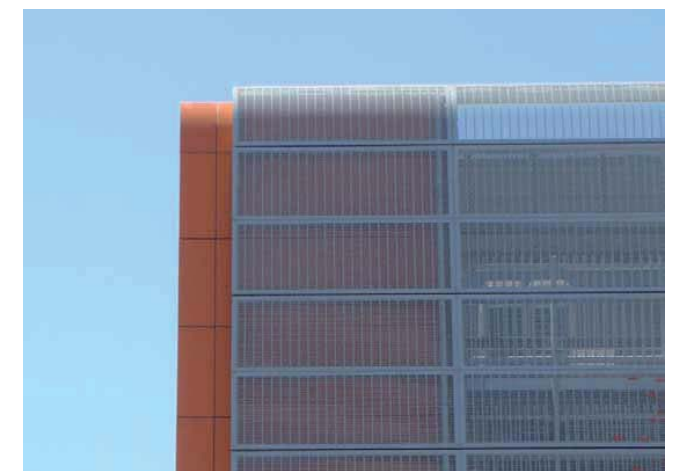
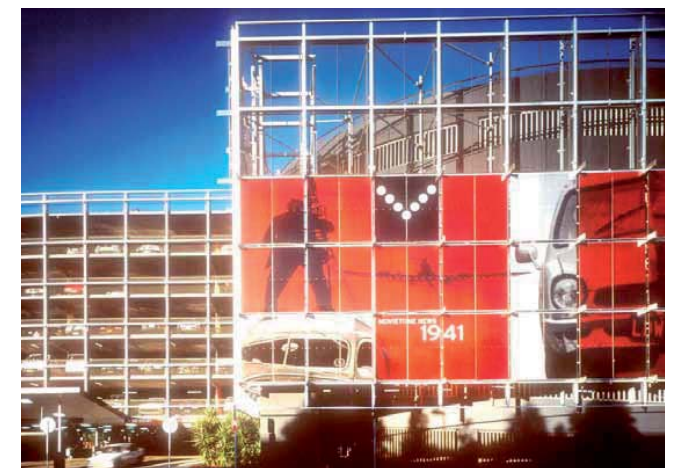
BRICKS AND BLOCKS



WAVE CONCEPT FOR PRECAST PANELS
 POSITIVE PANEL WIDTH OF 2240mm
 DEPTH NOMINAL 280mm WITH 50mm FOR "ORNAMENT"/INSETS
 MARRICKVILLE METRO
 SCALE 1:1



PRECAST CONCEPT



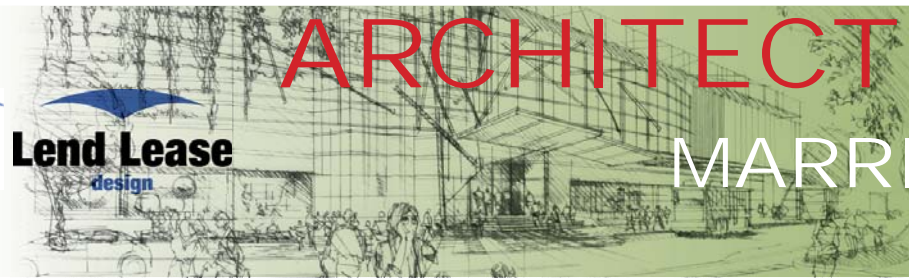
ENTRANCES

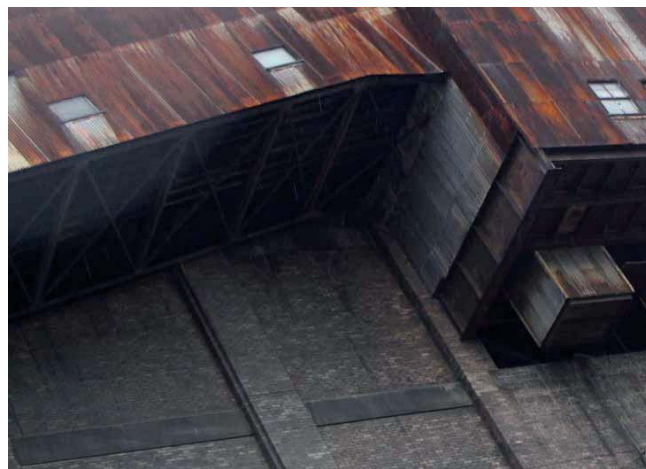


FRAMES

ARCHITECTURAL CONCEPT - ELEMENTS

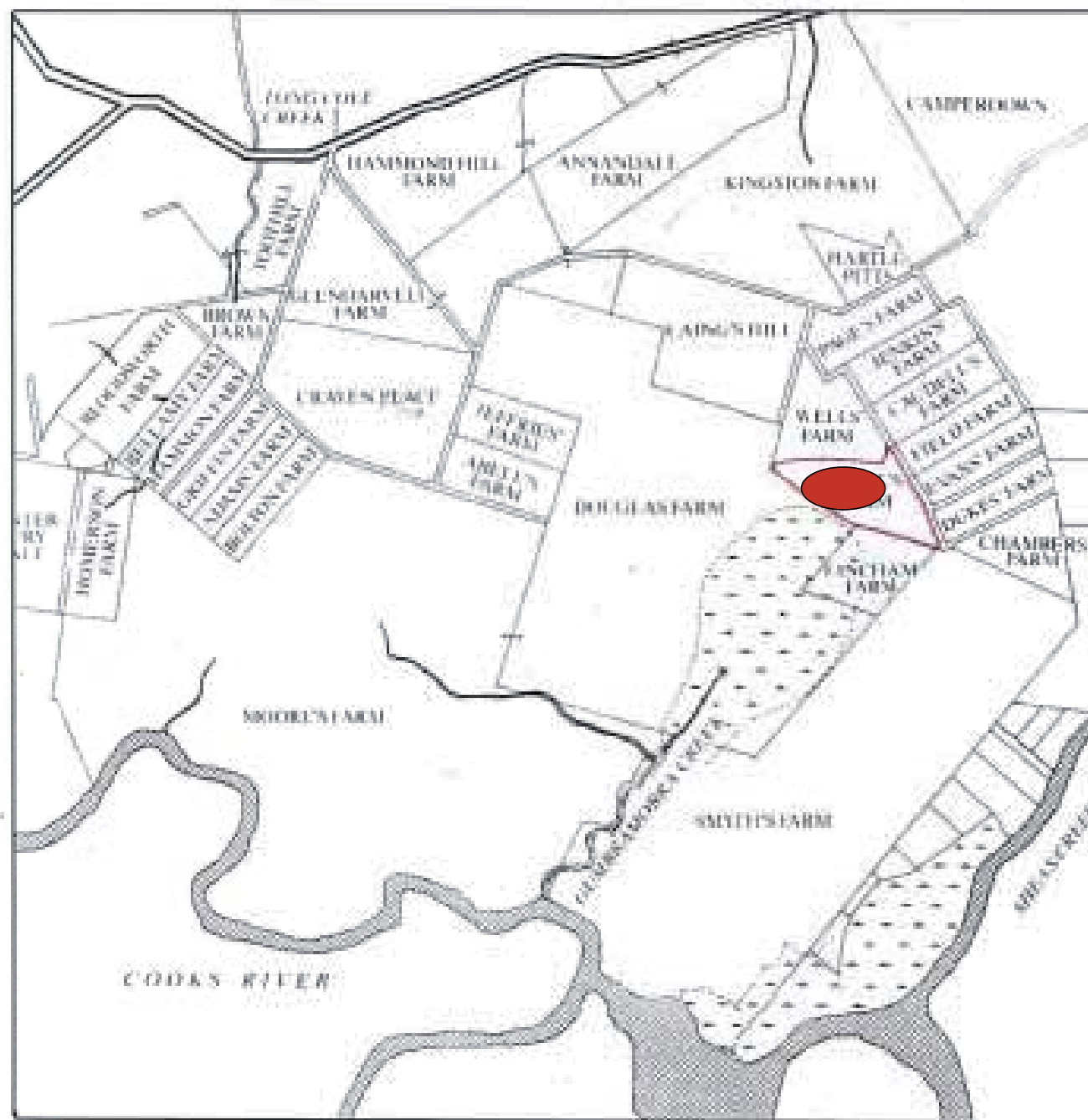
MARRICKVILLE METRO ARCHITECTURAL REPORT 38





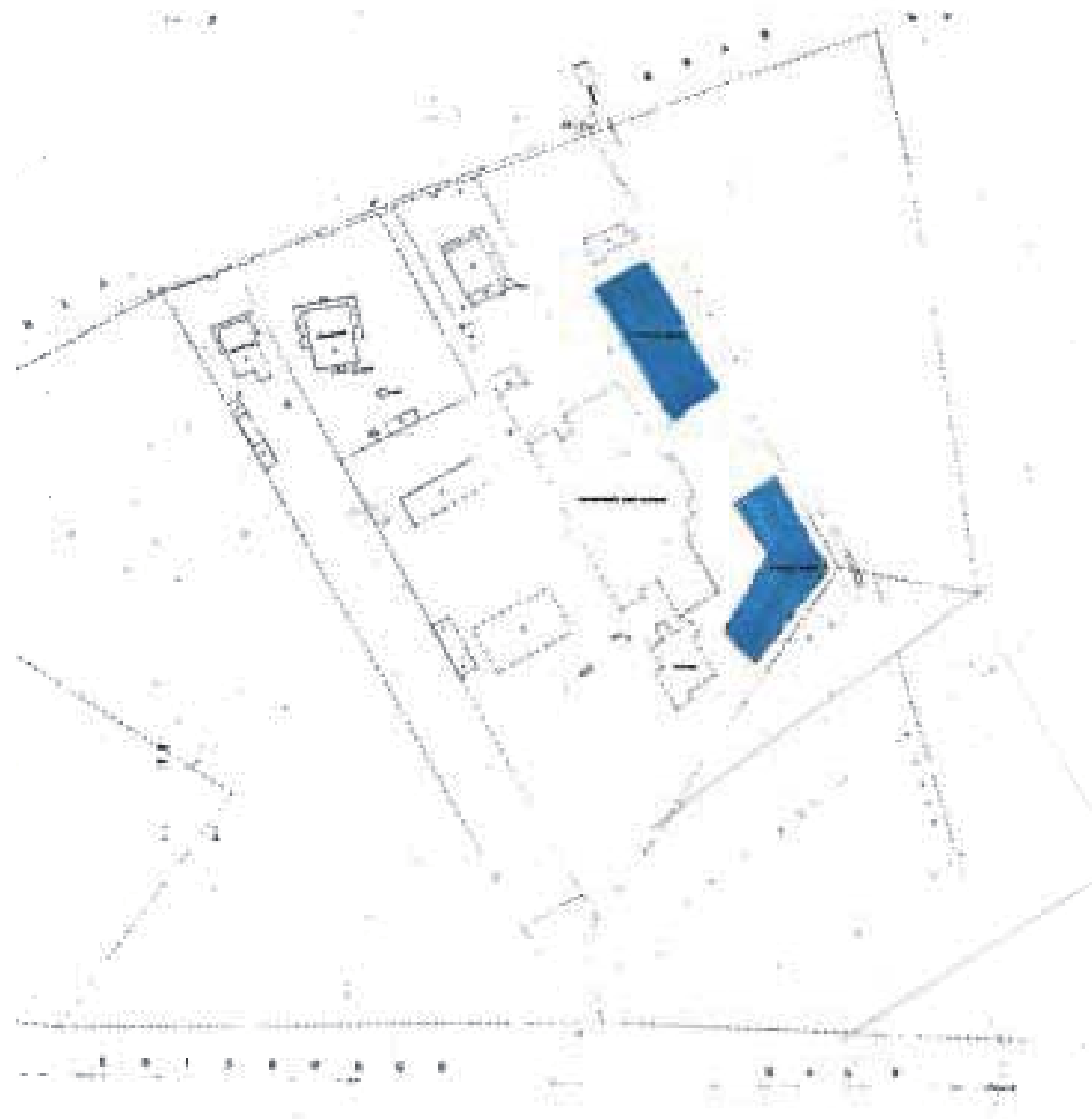
INDUSTRIAL RECYCLING

INDUSTRIAL AESTHETICS



COOKS RIVER
GUMBRAMORRA CREEK
SWAMP LAND
MANGROVES
WAINE'S GRANT
WATER TRAIL

HERITAGE



MILL HOUSE
WOOL MILL
TANNERY
BOOT MAKING
BRICK MAKING
WATER HOLES
WATER TRAIL

HERITAGE