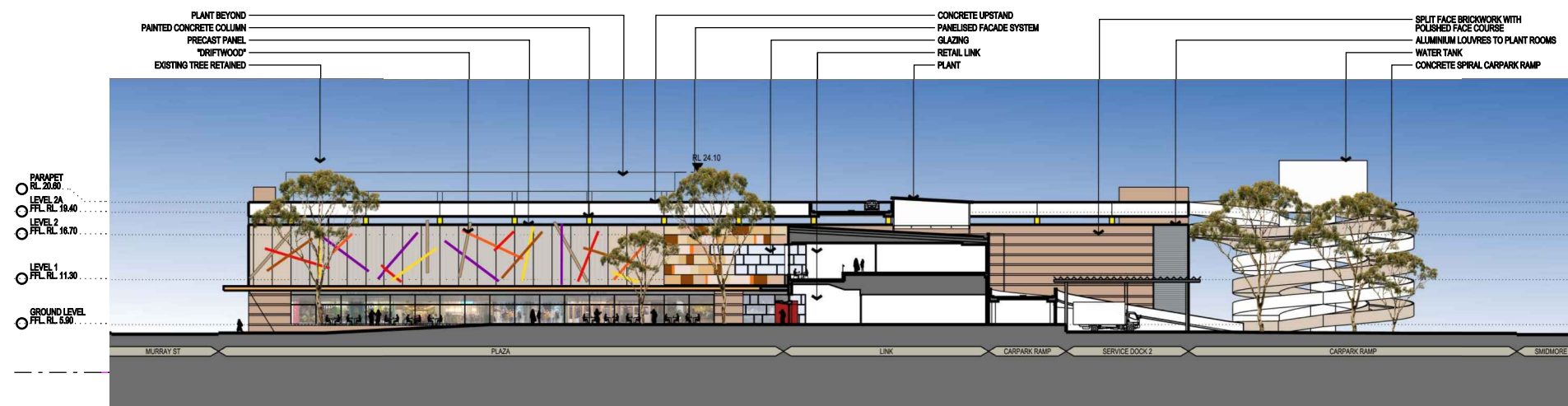


EXISTING NORTH FACING ELEVATION - SMIDMORE STREET

*TREES NOT SHOWN FOR CLARITY.
REFER TO LANDSCAPE DRAWINGS FOR DETAILS.



PROPOSED NORTH FACING ELEVATION - SMIDMORE STREET



ISSUE FOR PART 3A APPLICATION

02	ISSUE FOR PART 3A APPLICATION	16.07.10
01	ISSUE FOR PART 3A APPLICATION	02.06.10
Issue/Rev. Revision Description Date		
Project Manager Bovis Lend Lease Pty. Limited		
Bovis Lend Lease 30 The Bend 30 Midmore Road Milners Point NSW 2000		
Architect Lend Lease design		
Lend Lease 30 The Bend 30 Midmore Road Milners Point NSW 2000		
Urban Planners URBIS		
Ph:+612 8233 8000 Fax:+612 8233 8000 Level 21, 321 Bent Street Sydney NSW 2000		
Landscape Architect SITE IMAGE		
Ph:02 9000 2800 Fax:02 9000 2877 24-48 Brown Street Alexandria NSW 2015		
Client AMP capital INVESTORS		
Project Metro		
Title OVERALL ELEVATIONS SHEET 2		
Scale		
Drawn LY	Checked EI	Coordinated EI
Approved GJ	Date 24.05.10	
Project Number : Drawing Number		Issue
160496:EA011B		02