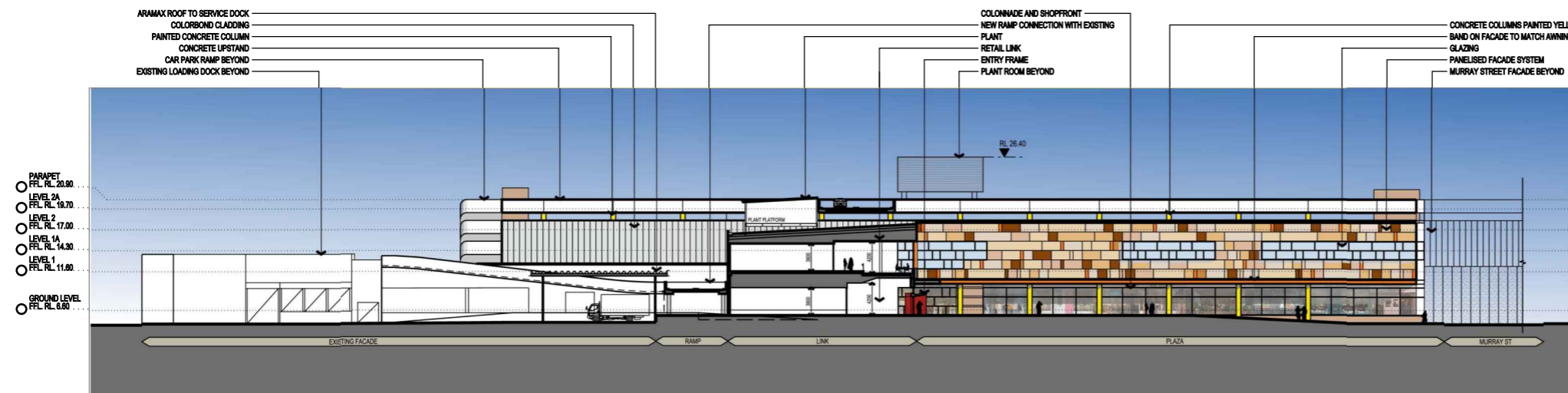
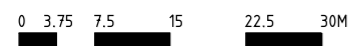


EXISTING SOUTH FACING ELEVATION - SMIDMORE STREET

*TREES NOT SHOWN FOR CLARITY.
REFER TO LANDSCAPE DRAWINGS FOR DETAILS.



PROPOSED SOUTH FACING ELEVATION - SMIDMORE STREET



ISSUE FOR PART 3A APPLICATION

02	ISSUE FOR PART 3A APPLICATION	16.07.10
01	ISSUE FOR PART 3A APPLICATION	02.06.10
Issue/Rev.	Revision Description	Date
Project Manager Bovis Lend Lease Pty. Limited ADV 97 000 000 100 30 The Bond 30 Hickson Road Millsers Point NSW 2000		
Architect Lend Lease design 30 The Bond 30 Hickson Road Millsers Point NSW 2000		
Urban Planners URBIS Ph: +612 8235 9900 Fax: +612 8235 9900 Level 21, 321 Kent Street Sydney NSW 2010		
Landscape Architect SITE IMAGE Ph: +612 8980 2800 Fax: +612 8980 2877 24-48 Bonville Street Alexandria NSW 2015		
Client AMP CAPITAL INVESTORS		
Project METRO MARRICKVILLE		
Title OVERALL ELEVATIONS SHEET 3		
Scale 1:1000		
Drawn	Checked	Coordinated
LY	EI	EI
		GJ
Project Number: 1 Drawing Number:		Date: 24.05.10
160496:EA011c		02