

PLATE 3.1

Hunter River Copper Smelting Works, 1886
Source: Hunter Photobank Goold Collection



PLATE 3.2

Hunter River Copper Smelting Works Private
Jetty, showing Railway. (Tin smelting works is shown
to the left with offices and cottages centre back)
Source: Phillips 1980.



PLATE 3.3

The disused Hunter River Copper Smelting Works in 1913. Several derricks used for pile driving are at left with smelter building and cottage centre. The stack was utilised by the Steelworks.

Source: Jay, 1999

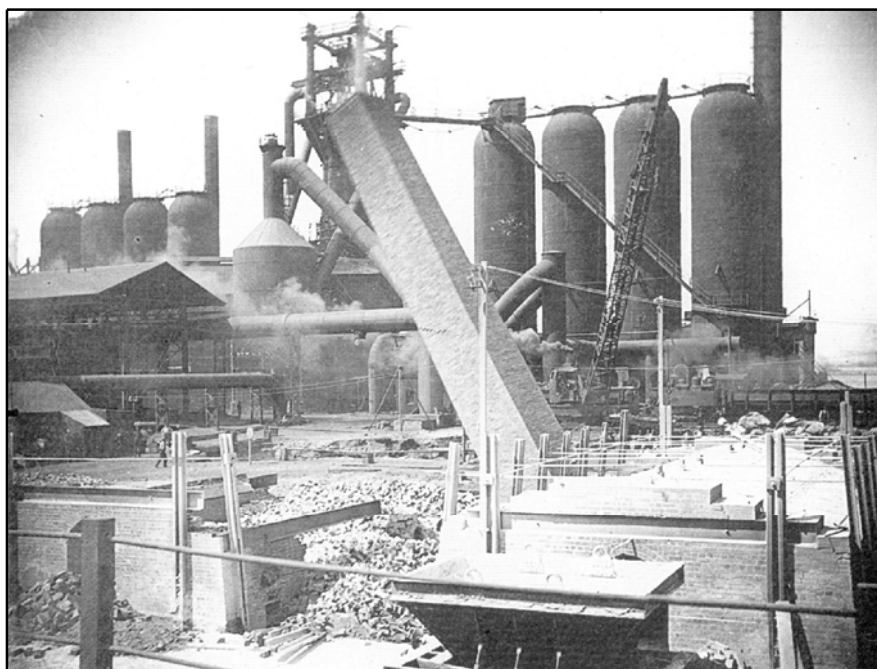


PLATE 3.4

Demolition of the Copper Smelter Stack 1923.

Source: The BHP Review, October 1935

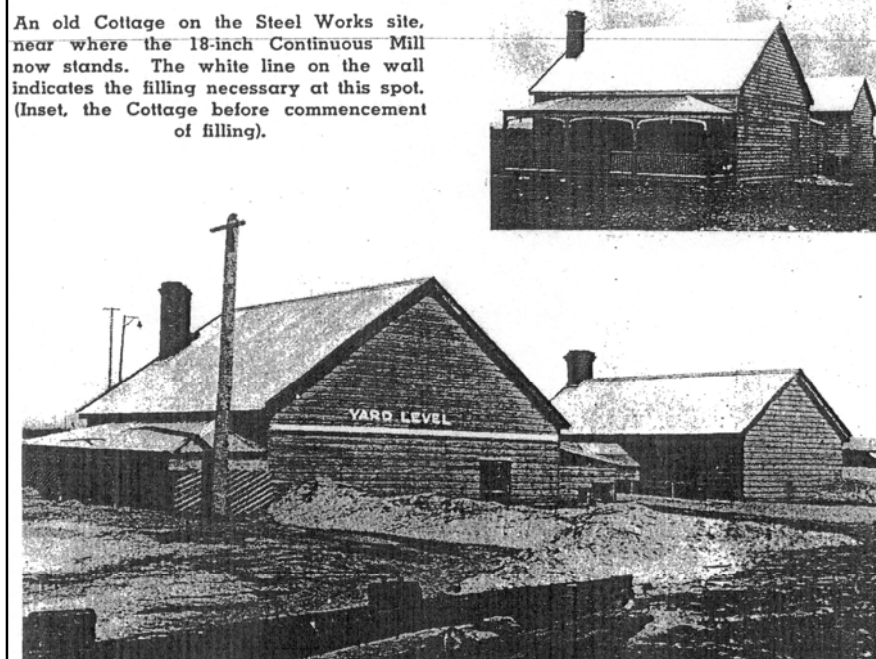


PLATE 3.5

Cottages from the Copper Smelting Works
Source: The BHP Review, October 1935



PLATE 3.6

A three foot diameter dredge pipe delivers sand filling
from the harbour, March, 1914 around foundations
for the Open Hearth Steel Furnaces



PLATE 3.7

Construction of battery of Semet Solvay
By Product Coke Ovens
Source: BHPBA N 292

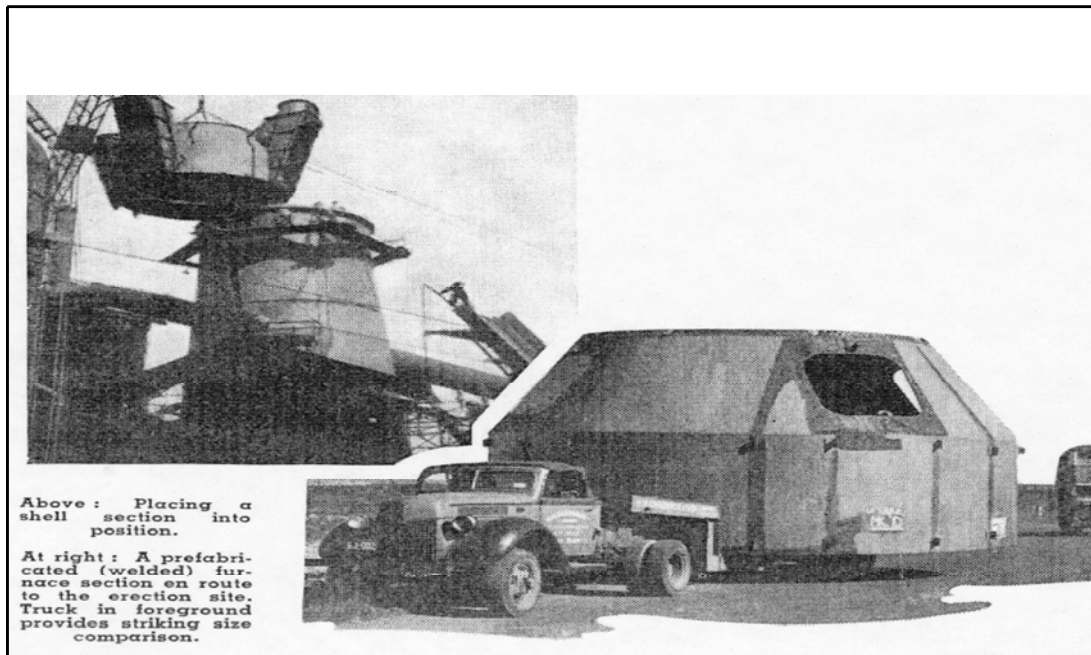


PLATE 3.8

View of Portion of Semet Solvay Coke Ovens Newcastle
Source: BHP Shapes and Sections Handbook, 1924

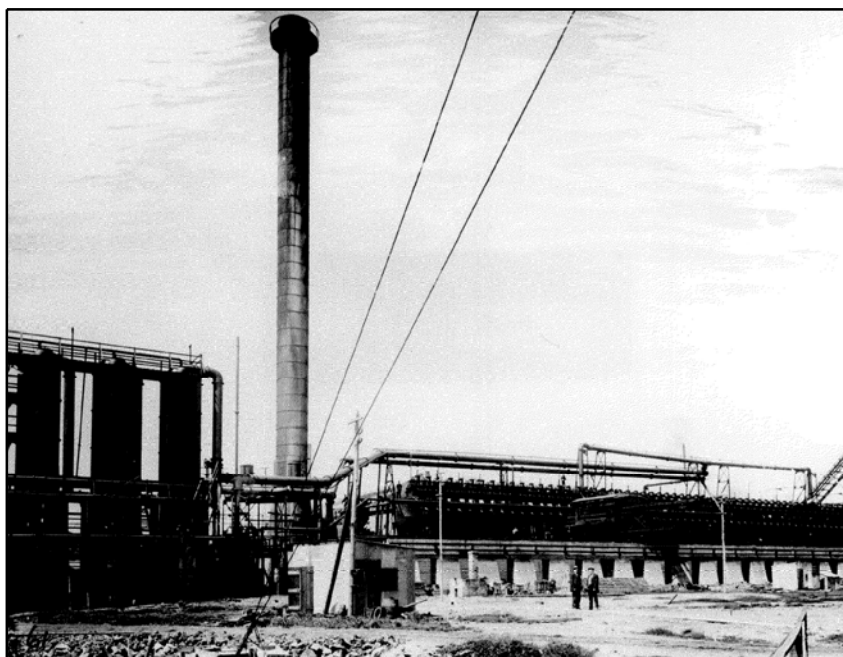


PLATE 3.9

General View of Semet Solvay Coke Ovens Plant, 1930
Source: BHPBA N 0513

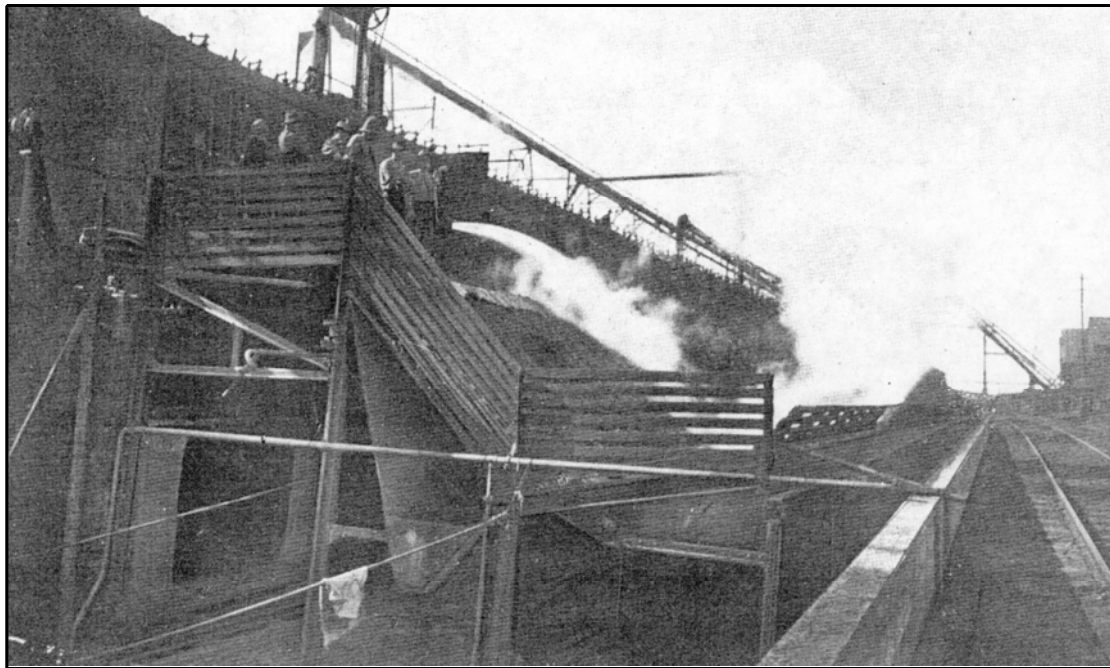


PLATE 3.10

Quenching Coke at Coke Ovens, Newcastle 1924
Source: BHP Shape and Sections Handbook, 1924

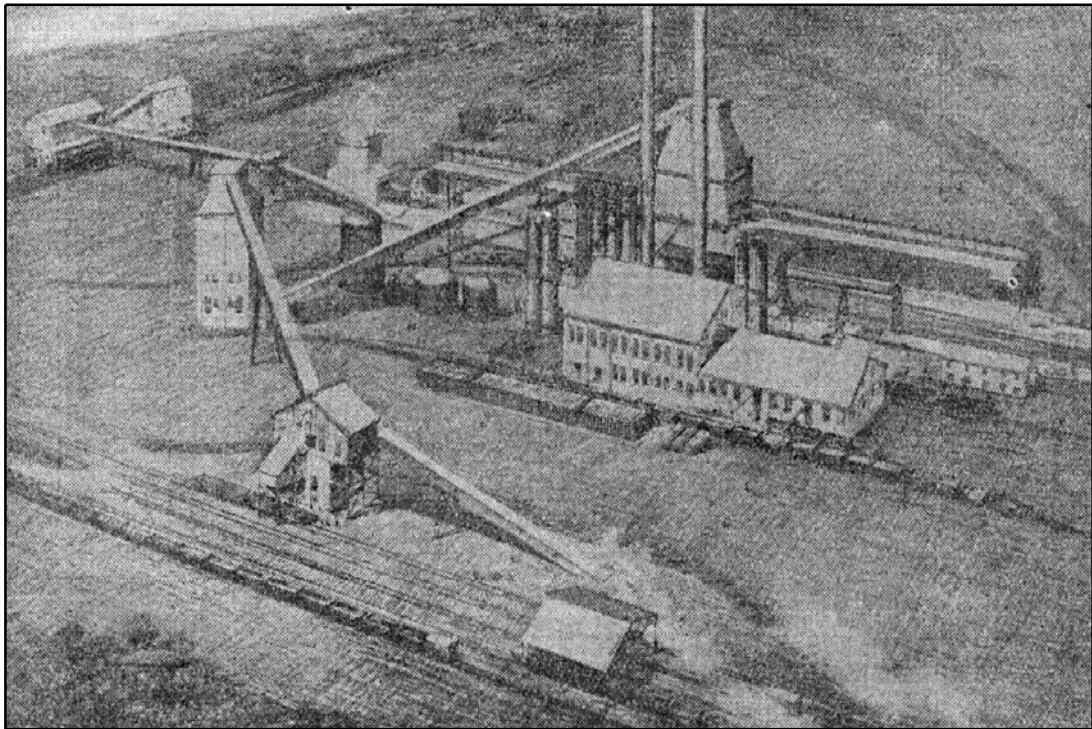


PLATE 3.11

No.1 and No.2 batteries Wilputte Coke Ovens
Source: Newcastle Herald, 28/8/1933

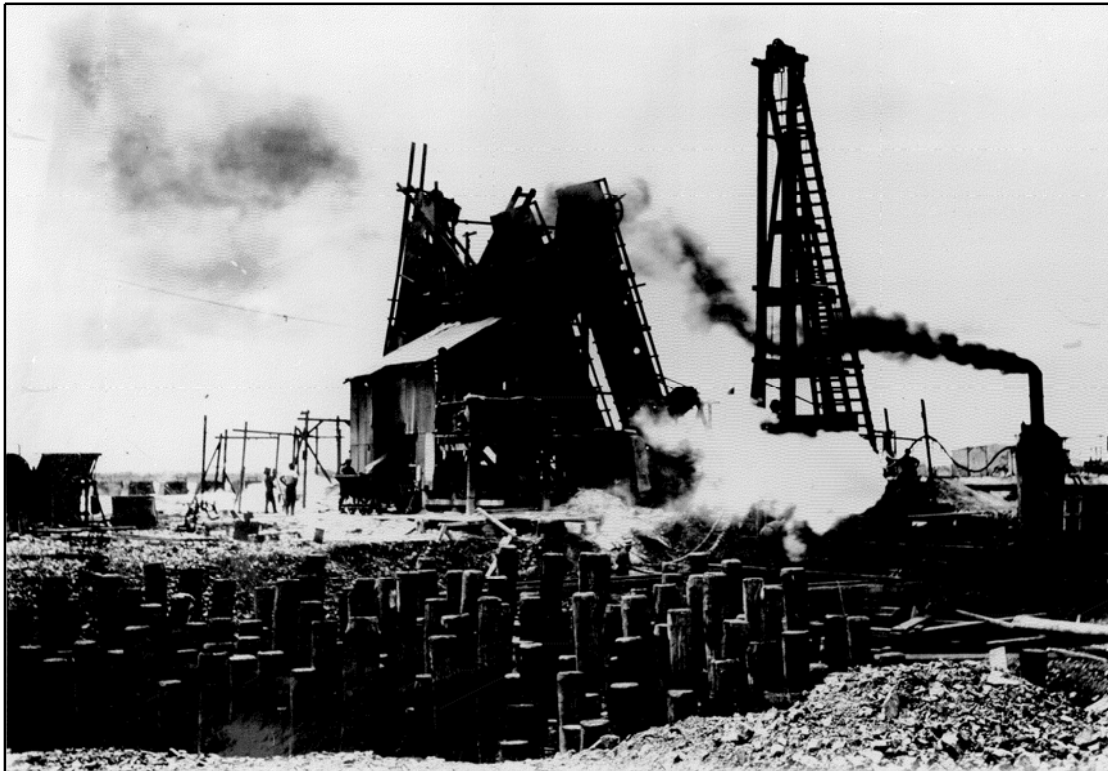


PLATE 3.12

View of pile driving and foundations
of No.2 Blast Furnace
Source: BHPBA N 2838

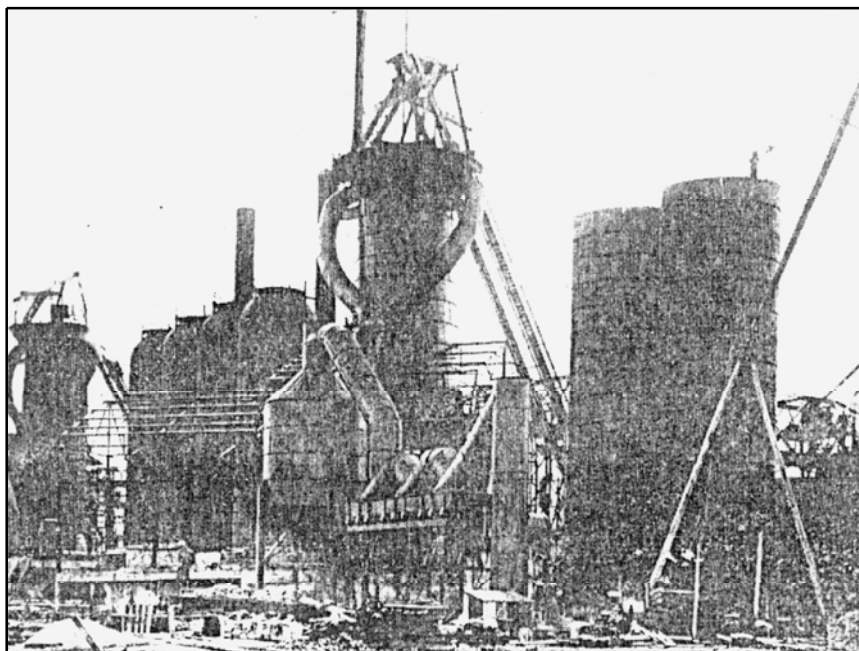


PLATE 3.13

No.2 Blast Furnace in process of construction, 1918
Source: The BHP Review, February 1936

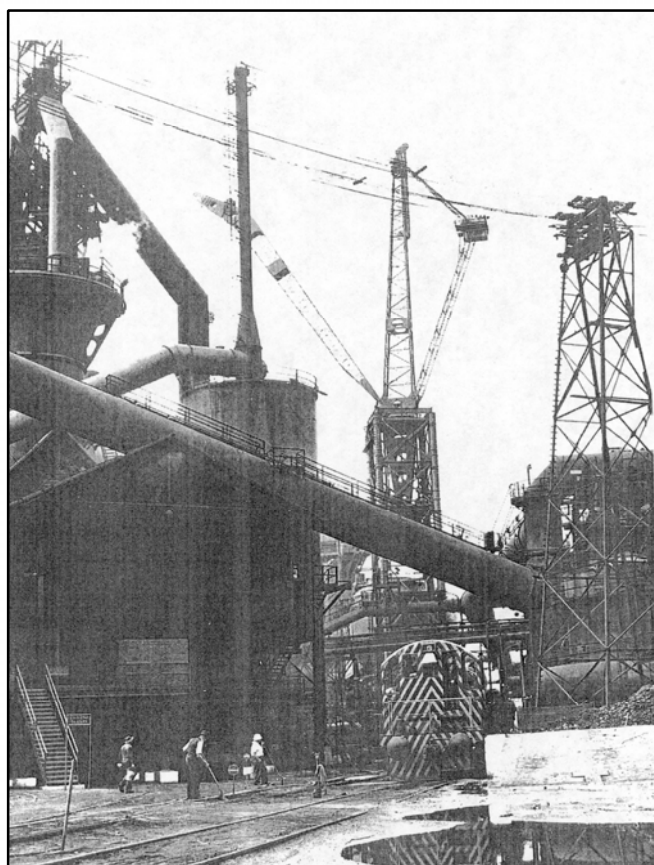


PLATE 3.14

The 60 ton crane specifically built for the rebuild of
No.2 Blast Furnace, 1947
Source: The Blast is Past, BHP 1999

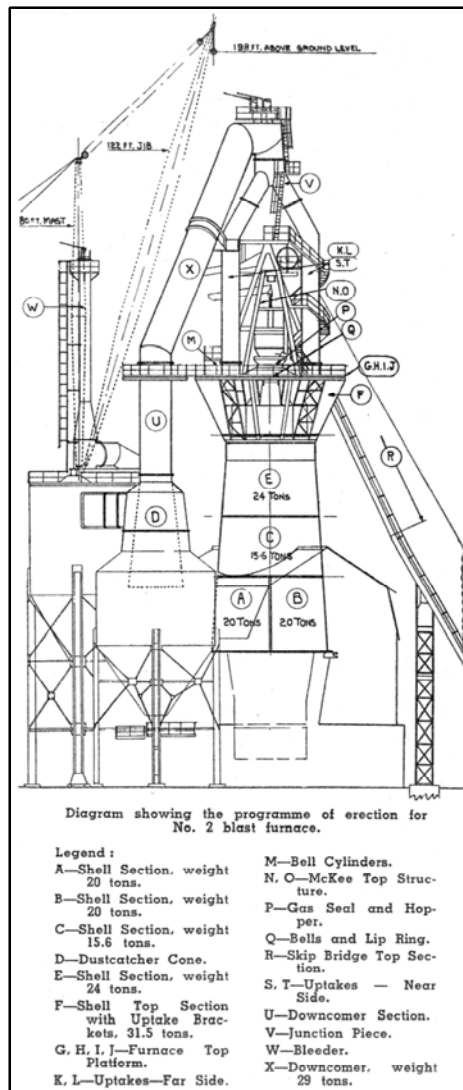


PLATE 3.15
Diagram showing the programme of erection for No.2 Blast Furnace
Source: The BHP Review, March 1947

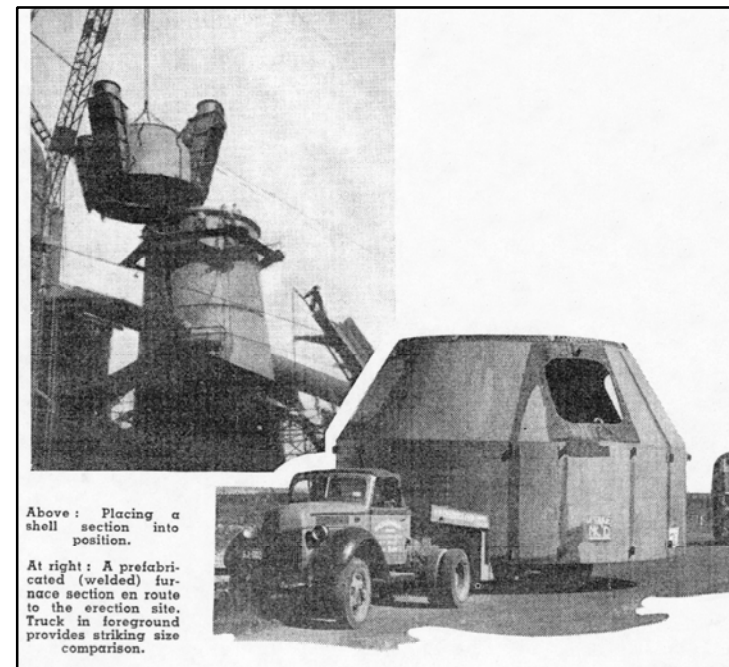


PLATE 3.16
Prefabricated furnace section – No 2 Blast Furnace Rebuild.
Source: BHP Review, March 1947

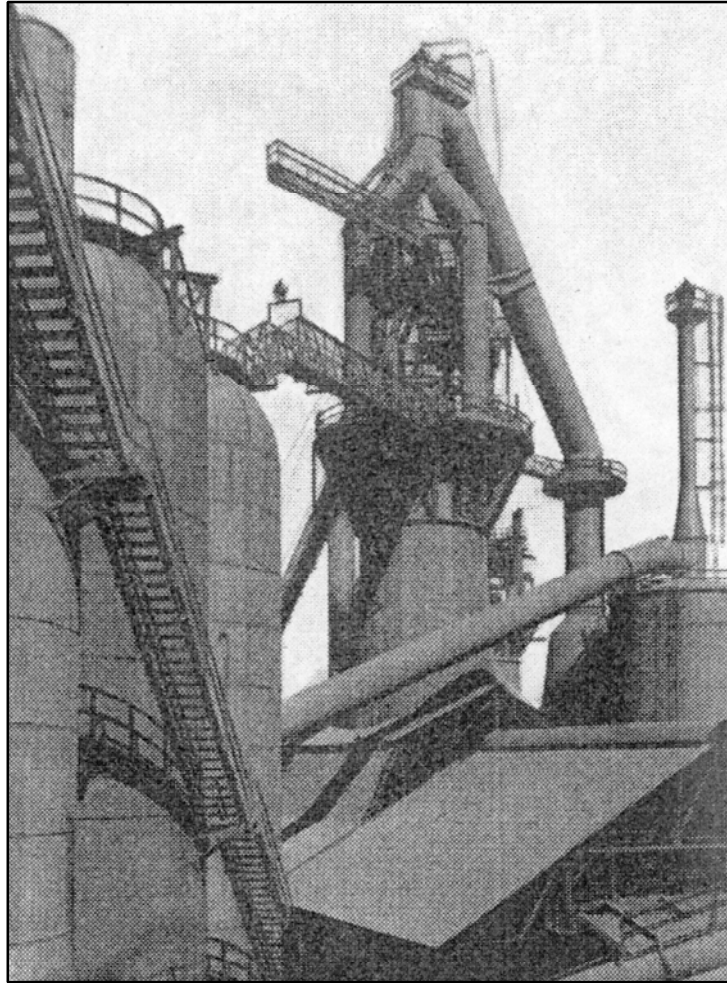


PLATE 3.17

The finished job – No.2 Blast Furnace
Source: The BHP Review, March 1947

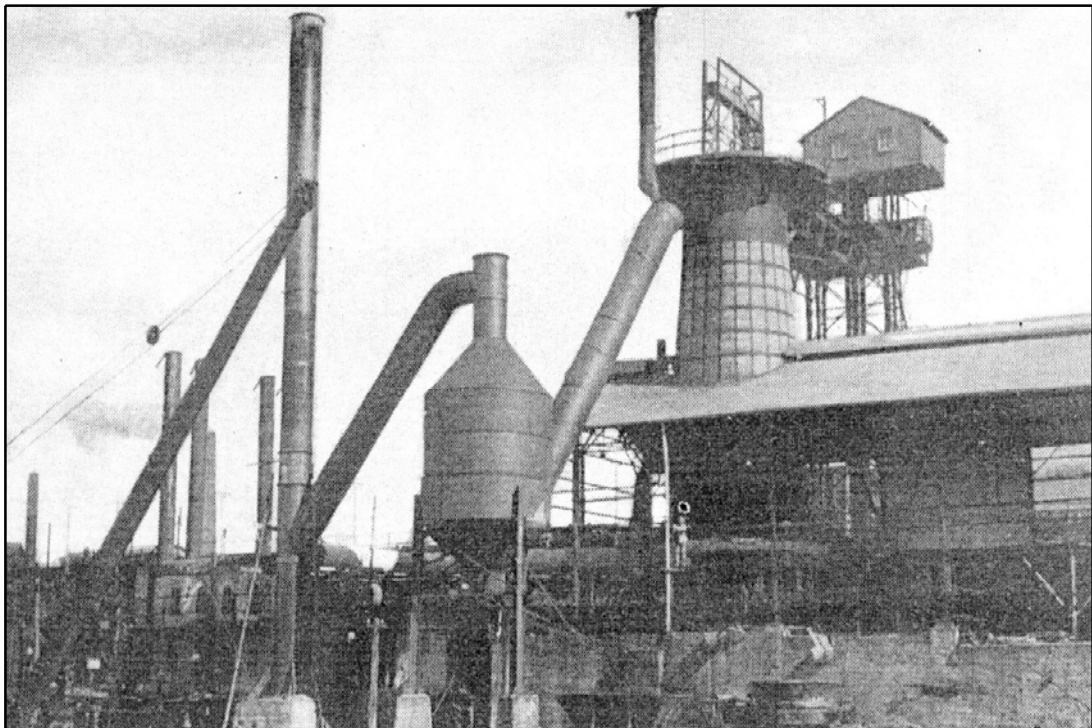


PLATE 3.18

View of "Maggie" 1918
Source: BHP Review, 1929

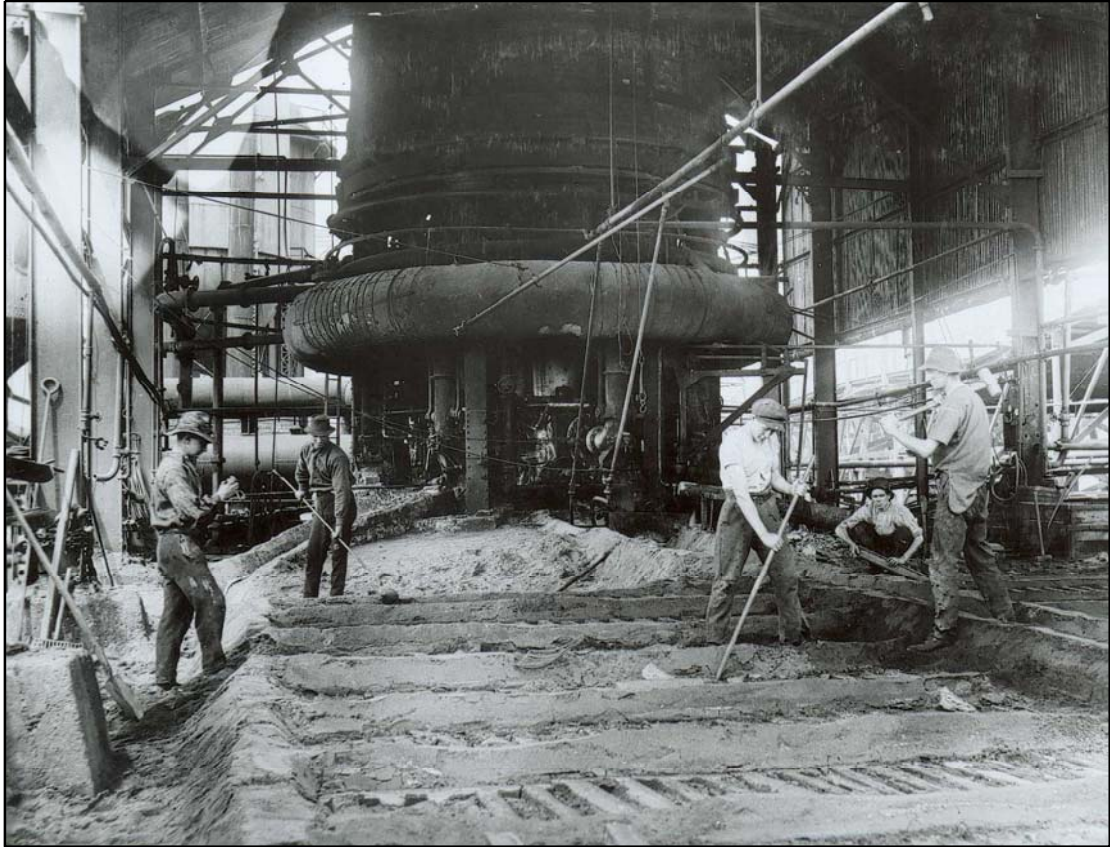


PLATE 3.19

Workers lifting pigs of metal at the
Ferro-Manganese Furnace
Source: BHPBA N 683

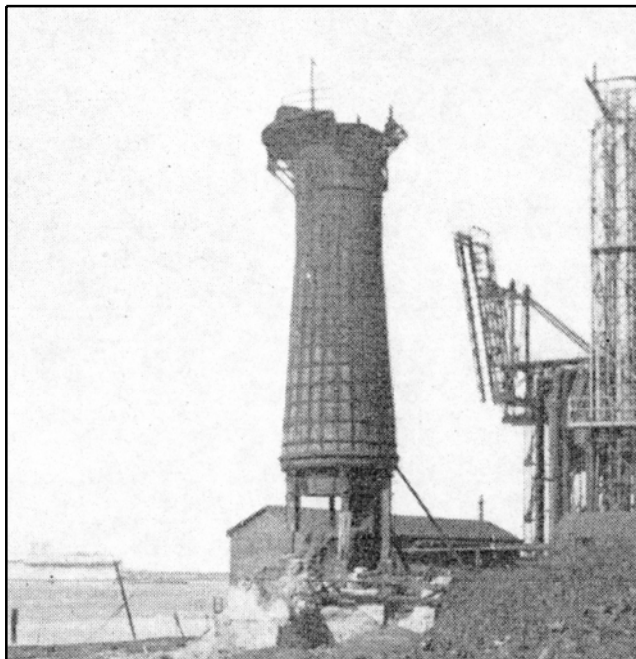


PLATE 3.20

Maggie – Just prior to falling (Left) and falling (Right)
Source: BHP Review 1934

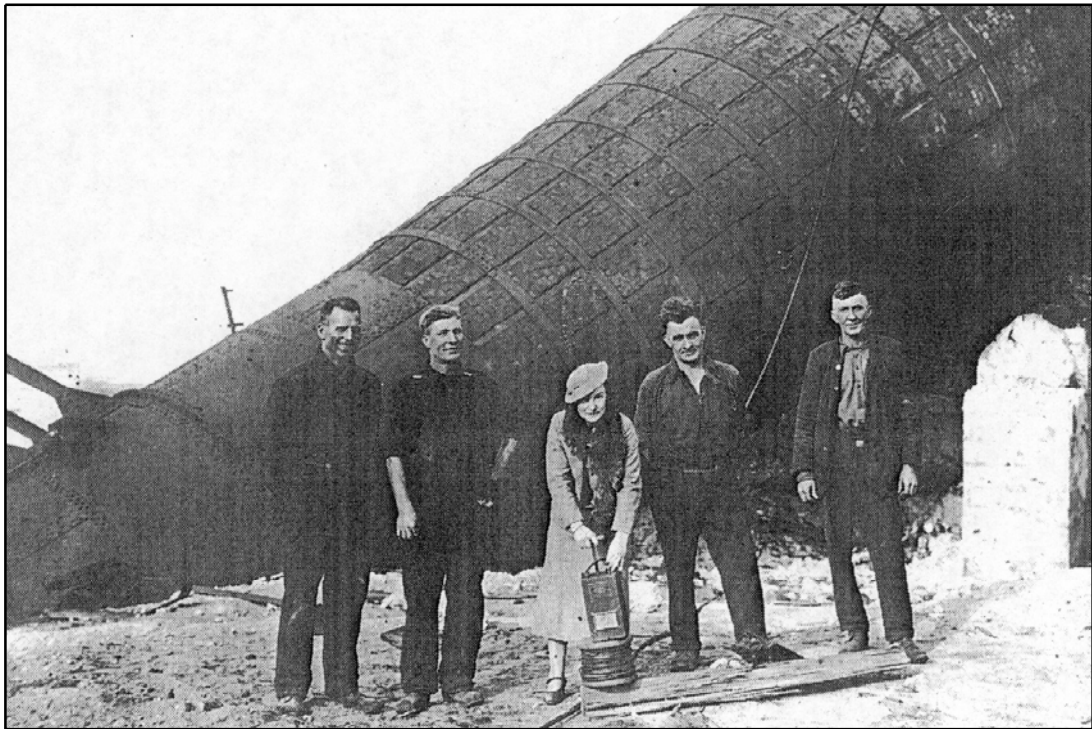


PLATE 3.21

Maggie after being felled
Source: The Blast is Past, BHP 1999

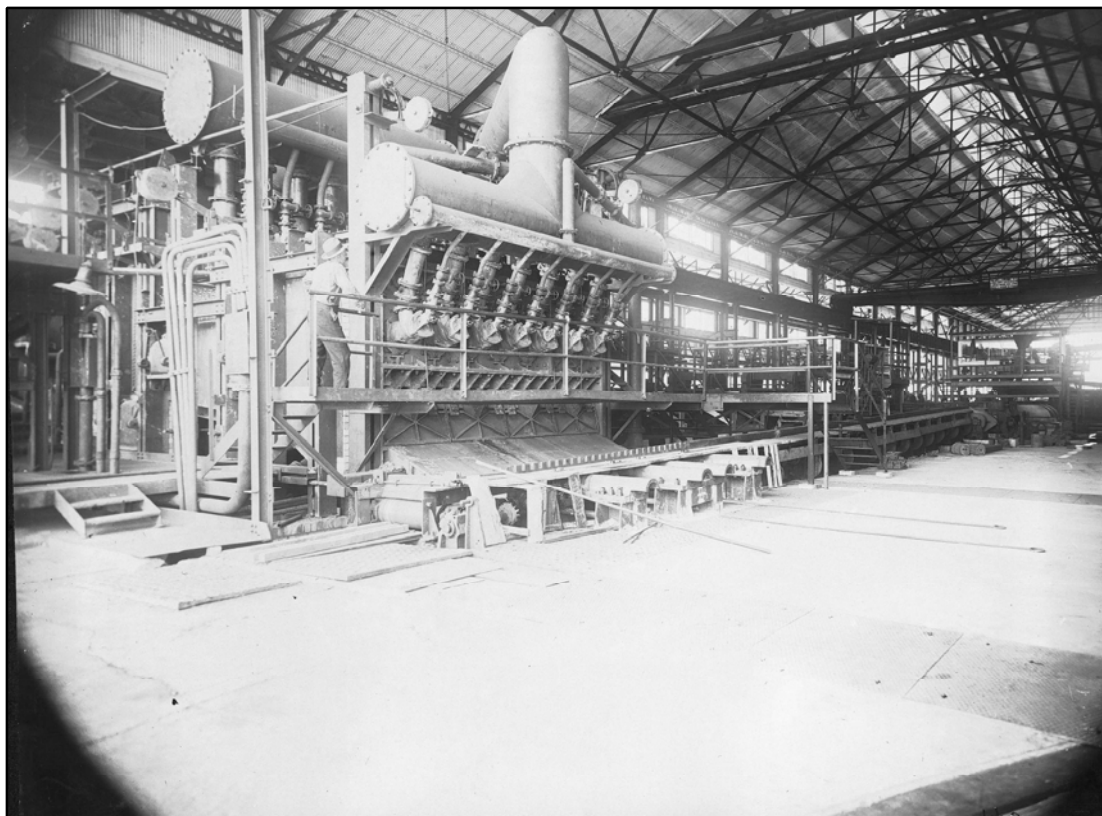


PLATE 3.22

Interior view of the 34 inch x 90 inch plate mill and
re-arranged 18 inch bar mill showing re-heating furnace
Source: BHPBA N 0817

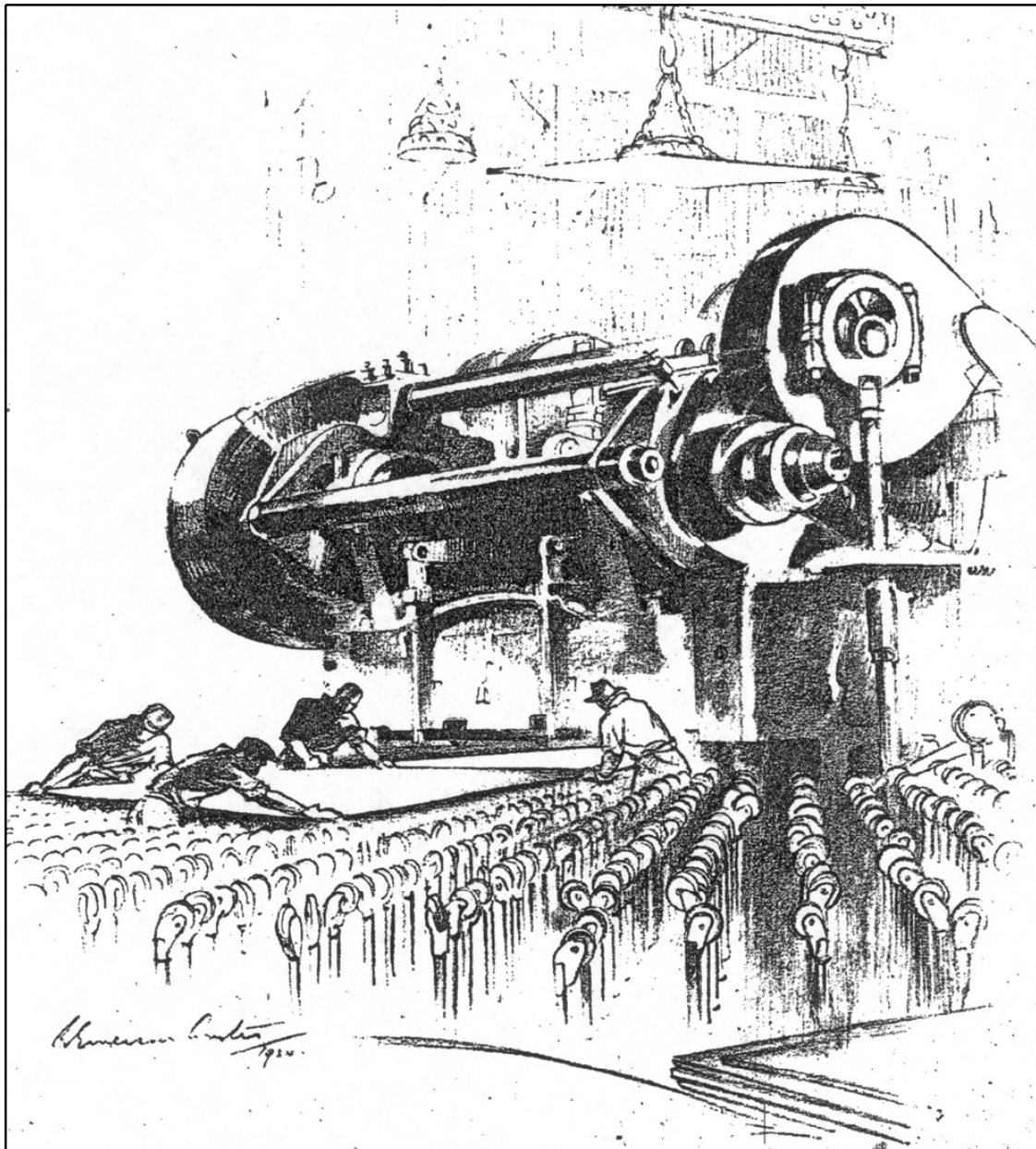


PLATE 3.23

Plate Mill Shears

Source: The BHP Review, 1935