

6.0 SELECTED PHOTOGRAPHS

Figure 6.1 View North/West of panorama. Power house on left and blast furnace in centre.



Figure 6.2 Eastern Façade of Power House showing old timber louvres and new window cladding

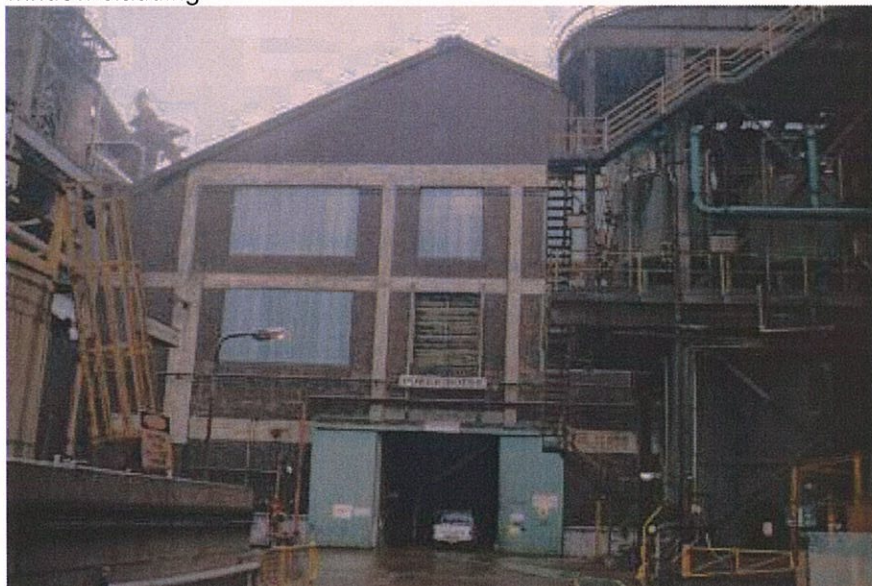


Figure 6.3 View South/East of Power House.

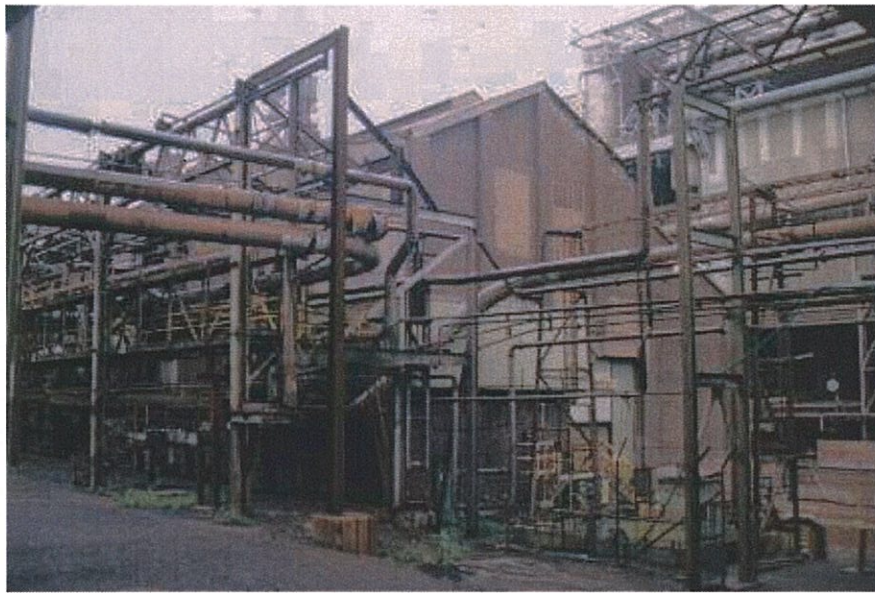


Figure 6.4 Western façade of Power House showing bricked in fenestrations.



Figure 6.5 View North of No1 condenser (left) and No2 condenser.

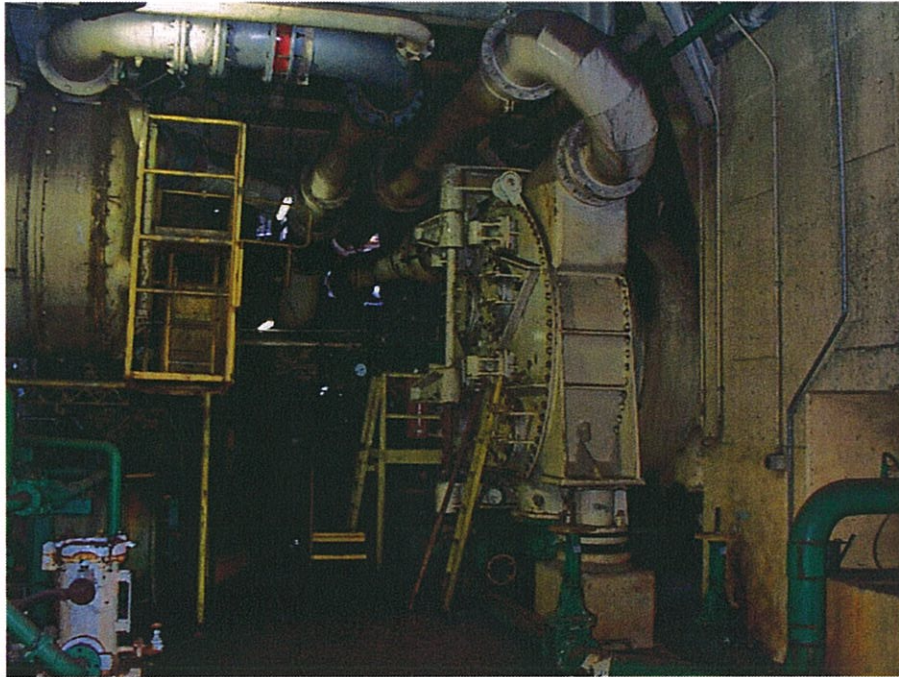


Figure 6.6 View North of No2 Alternator oil coolers.

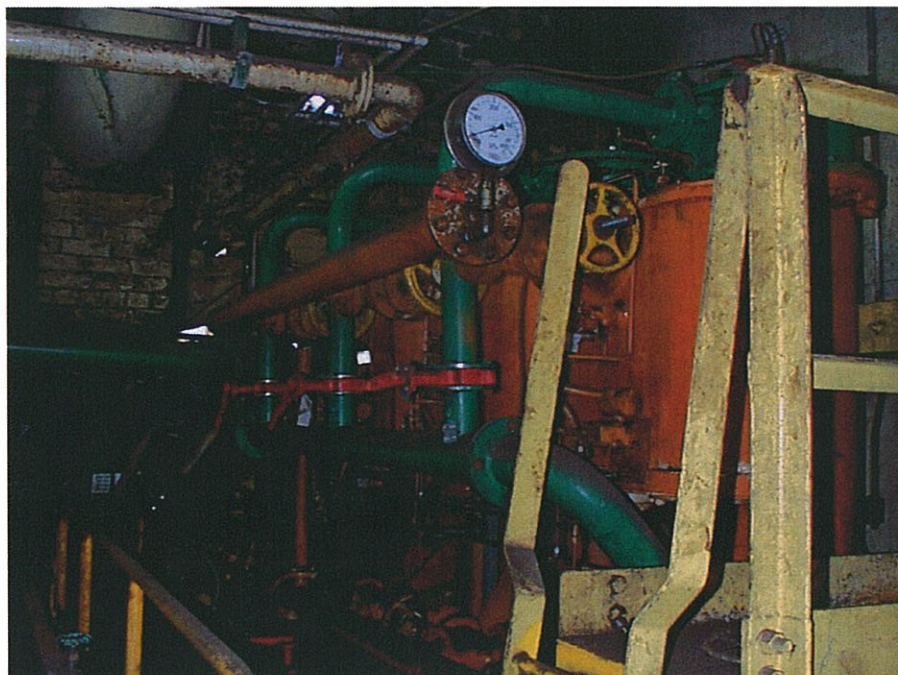


Figure 6.7 View East of No1 condenser oil coolers.



Figure 6.8 View North/West of No2 condensate pump and filter.

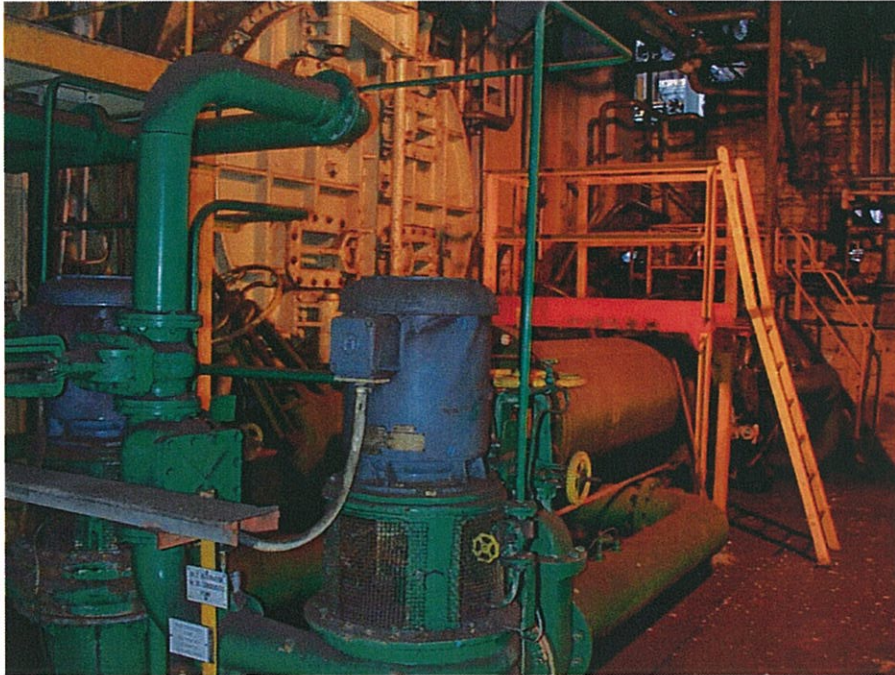


Figure 6.9 View North of salt water filter and No2 condenser on left and back of No3 condenser on right.



Figure 6.10 View of South of electrical switchboard on mezzanine.



Figure 6.11 View North/East of bus chamber.



Figure 6.12 View North West of open end of No4 condenser.

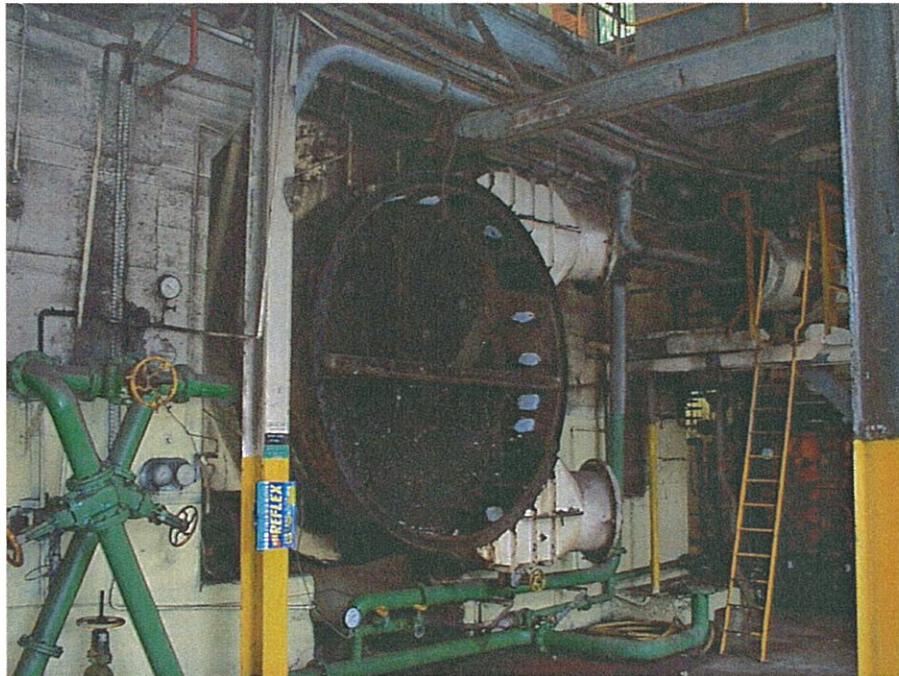


Figure 6.13 View North of oil filters for No3 and No4 condensers.



Figure 6.14 View North from stairs of various machines components including end of No4 condenser and hood from No2 turbine.

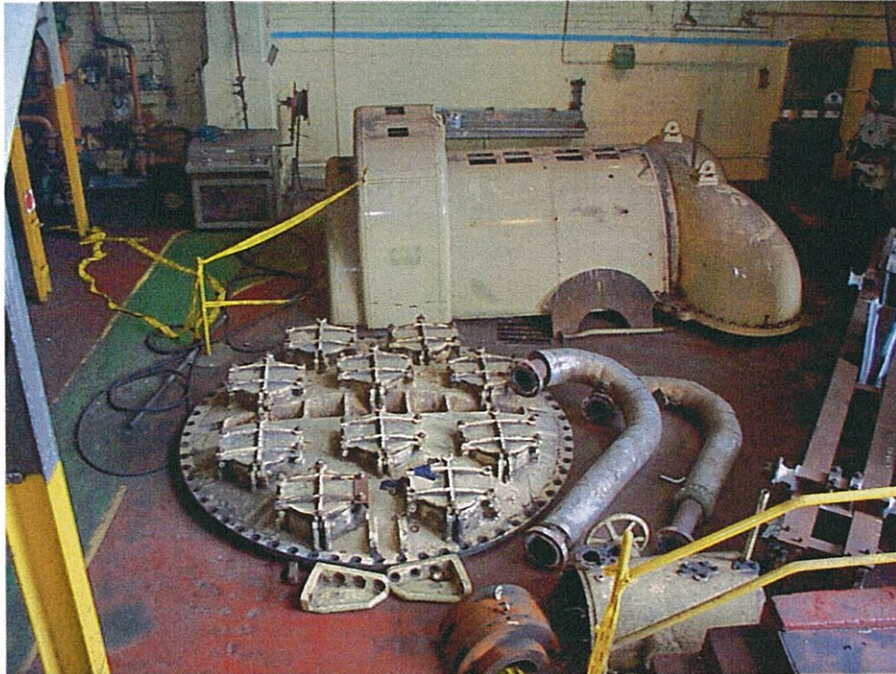


Figure 6.15 View North to mezzanine (left) and windows on Northern façade.



Figure 6.16 View South of voltage regulator panel (transformers 289 and 290).

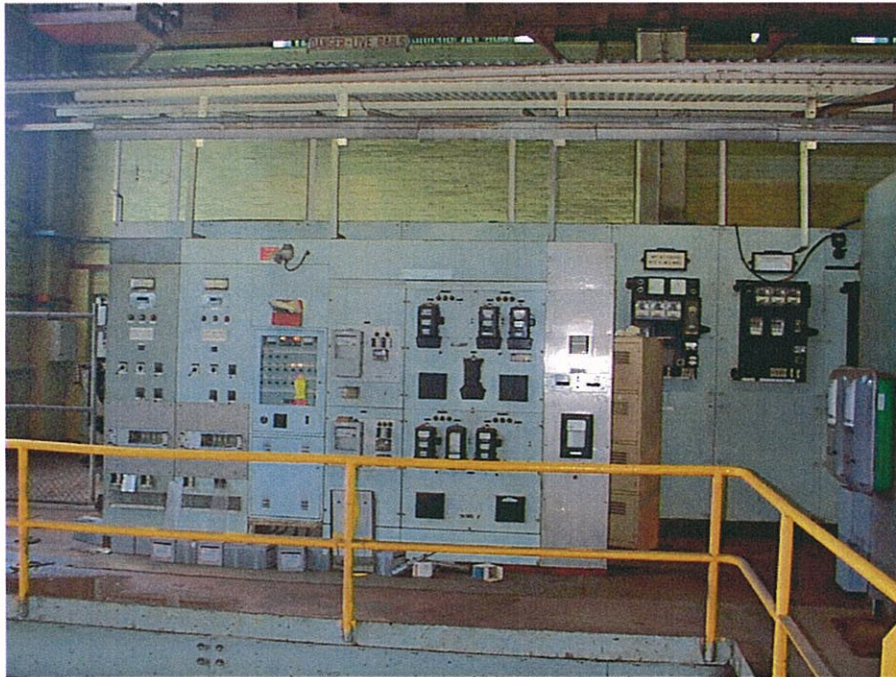


Figure 6.17 View North/East of old louvre window and newer semi transparent glazing.

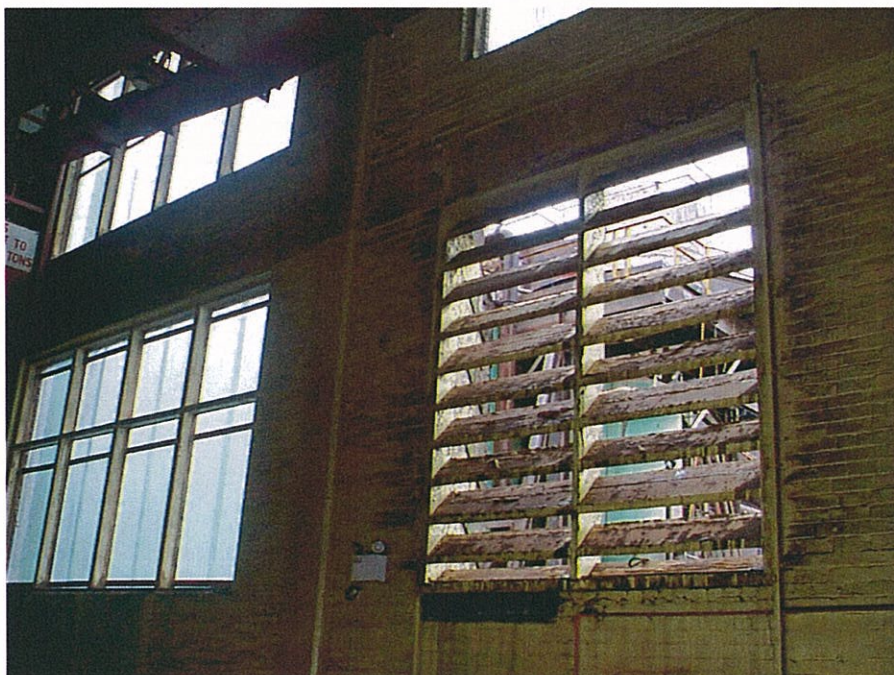
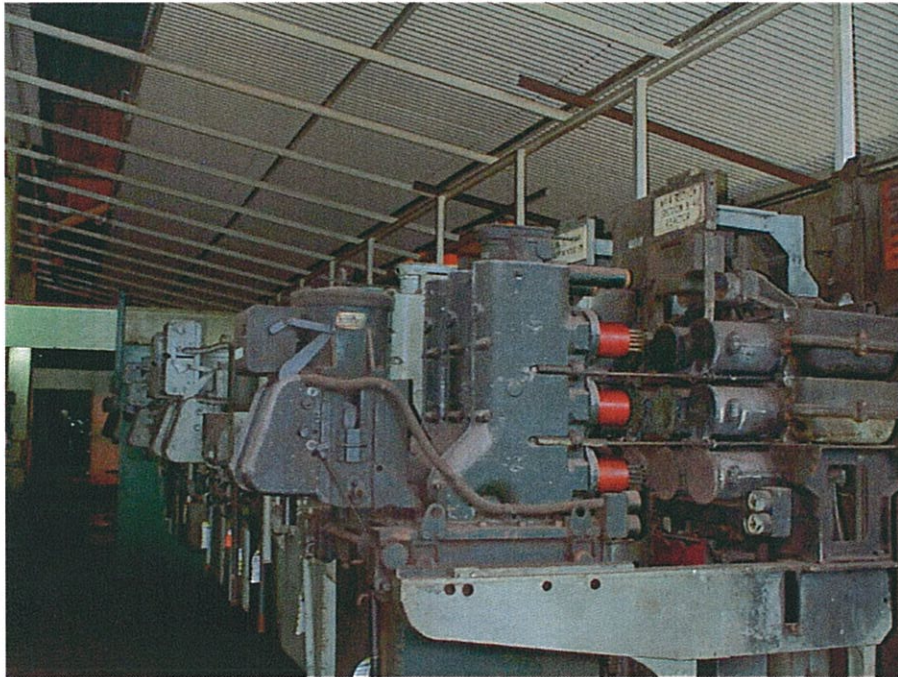


Figure 6.18 View West of electrical reactor switches in open position.



INTERNAL
Figure 6.19 View South of substation interconnector control panel. Note marble panel.

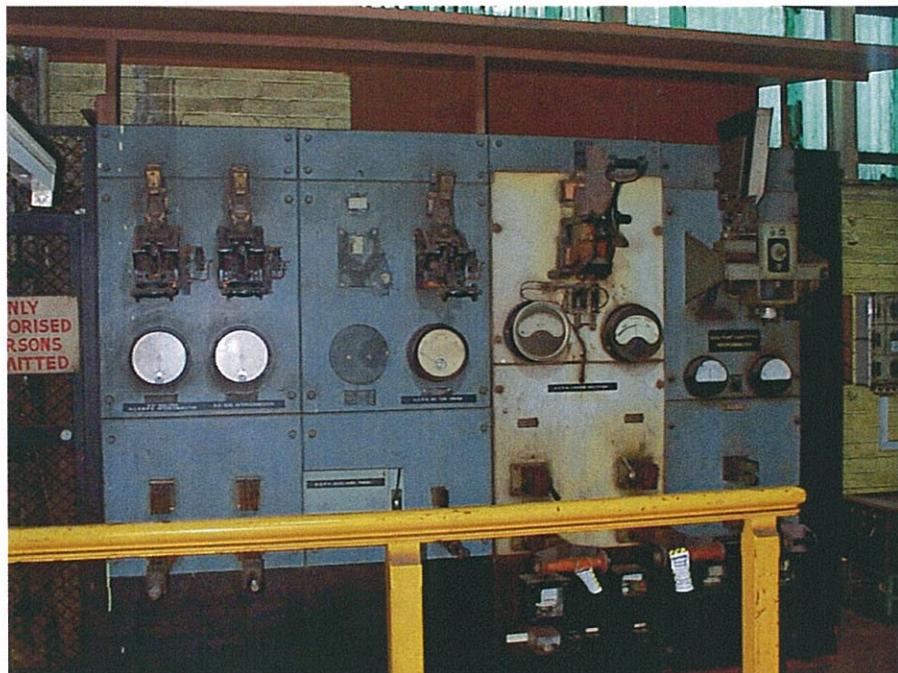


Figure 6.20 View North/East of bank of reactor switches with one in foreground removed and cable ends covered up.



Figure 6.21 View West of "Brown Boveri" No1 Turbine. Note bricked in section of western wall behind.



Figure 6.22 View West of western wall showing bricked in sections between columns.

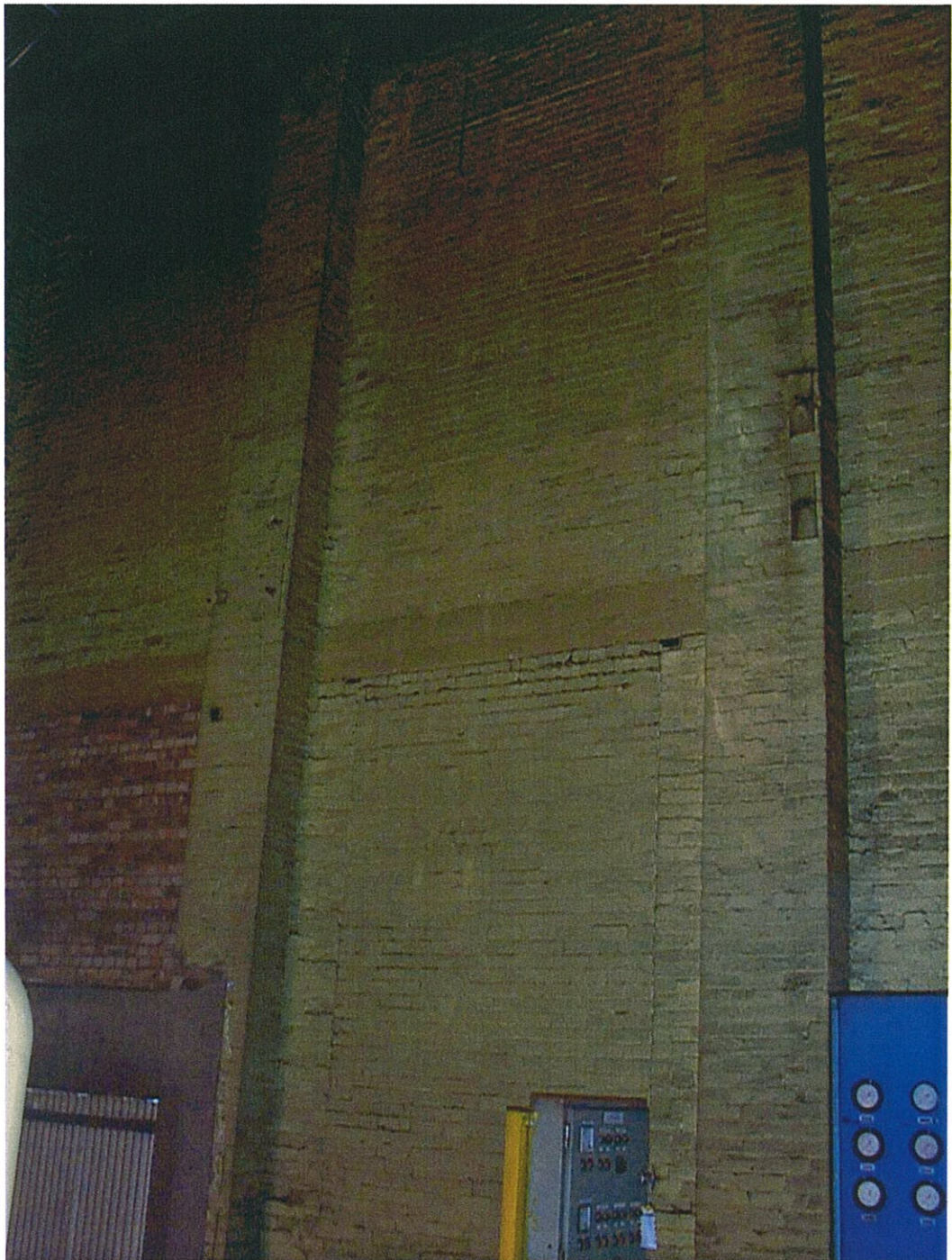


Figure 6.23 View North/East of No3 turbine (Parsons) with hood removed and generator (Fuji).



Figure 6.24 View South/East of row of electrical control panels



Figure 6.25 View North/East of number 4 synchronous condenser. (Parsons turbine)



Figure 6.26 View South from within control room of panel and switches.



Figure 6.27 View East along room with overhead cable trays.



7.0 NEGATIVE REFERENCE LIST

The following information relates to the complete set of negatives taken for the recording of this building. Under each Roll Number is a table containing the negative numbers and a description of each frame taken of that roll. The roll and negative numbers, position and direction of frame taken are referenced in the plan in section 8.0 – photographic reference plan. The numbers in the column titled “Figure No.” relate to the selected photographs in section 6.0 of this report. Items marked with a dash in this column have prints located in the appendix along with the complete set of negatives.

Manual camera photographs

ROLL 9857 23/03/00

Camera: Nikon FE. F 1:3.5

Film: Soulcator coloured film ASA 100

Neg No.	Figure No.	Description
2A	6.4	Western façade of Power House showing bricked in fenestrations
3A	6.3	View South/East of Power House
4A	6.2	Eastern Façade of Power House showing old timber louvres and new window cladding

Digital photographs

22/03/00

Camera: Kodak DC-120 Zoom 38 – 114

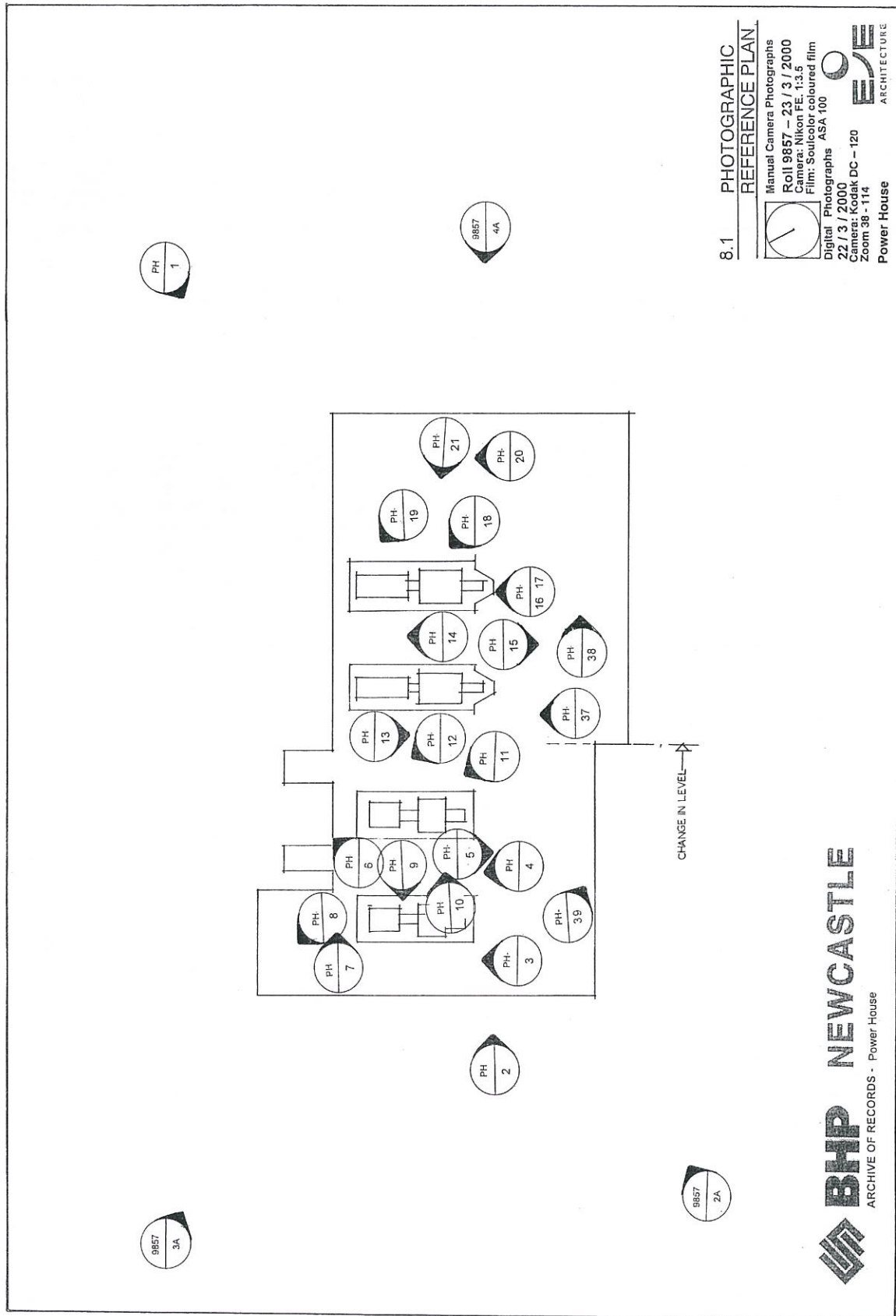
Photo No.	Figure No.	Description
PH-01	6.1	View North/West of panorama. Power house on left and blast furnace in centre.
PH-02	-	Signage at West wall.
PH-03	-	View North of underslung condenser of Number 1 turbine.
PH-04	6.5	View North of number 1 condenser (left) and number 2 condenser.
PH-05	-	View South to mezzanine.
PH-06	6.6	View North of number 2 Alternator oil coolers.
PH-07	6.7	View East of number 1 condenser oil coolers.
PH-08	-	View North of condensate cooler and number 1 condenser
PH-09	-	View West of concrete chamber and Access panel. Equipment in foreground dated 1985.
PH-10	-	View East of concrete chamber associated with number 2 condenser and ductwork.
PH-11	6.8	View North/West of number 2 condensate pump and filter.
PH-12	-	View North of water inlet pipe to number 2 condenser. Note penetrations to exterior wall.
PH-13	-	View South/West of low pressure steam heater and switchboard on mezzanine.
PH-14	6.9	View North of salt water filter and number 2 condenser on left and back of number 3 condenser on right.
PH-15	6.10	View of South of electrical switchboard on mezzanine.
PH-16	-	View North/East of cables above bus chamber to south of number 4 condenser.
PH-17	6.11	View North/East of bus chamber.
PH-18	6.12	View North West of open end of number 4 condenser green pipes – salt water.
PH-19	6.13	View North of oil filters for number 3 and number 4 condensers.
PH-20	6.14	View North from stairs of various machines components including end of number 4 condenser and hood from number 2 turbine.
PH-21	-	View West to mezzanine control room.
PH-22	6.15	View North to mezzanine (left) and windows on Northern façade.
PH-23	-	View North/East from mezzanine to crane hook.

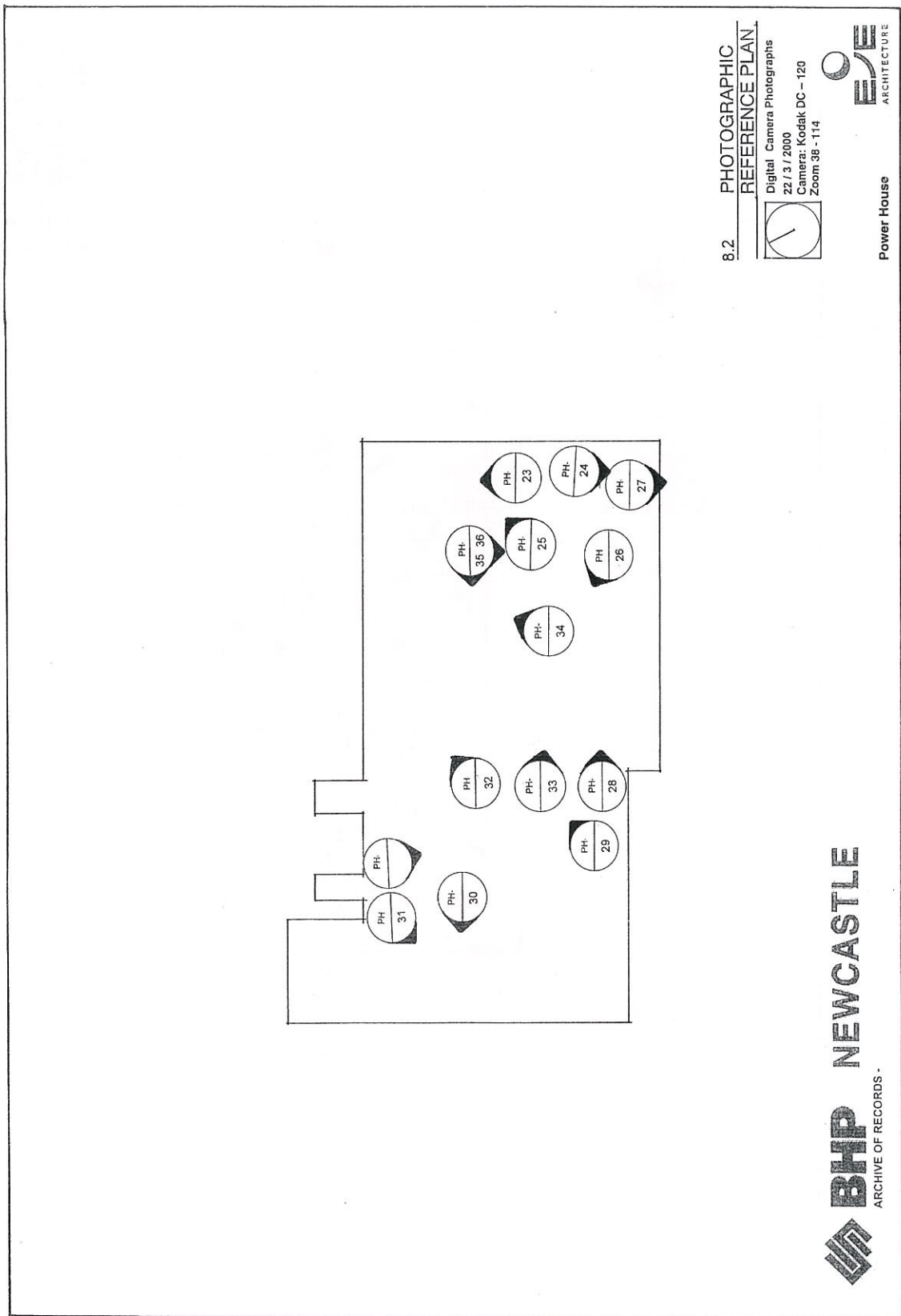
ARCHIVAL RECORD

Power House

PH-24	6.16	View South of voltage regulator panel (transformers 289 and 290).
PH-25	6.17	View North/East of old louvre window and newer semi transparent glazing.
PH-26	6.18	View West of electrical reactor switches in open position.
PH-27	6.19	View South of substation interconnector control panel. Note marble panel.
PH-28	6.20	View North/East of bank of reactor switches with one in foreground removed and cable ends covered up.
PH-29	-	View North/East of concrete wall and penetrations from old 25 cycle switch units now removed.
PH-30	6.21	View West of "Brown Boveri" number 1 Turbine. Note bricked in section of western wall behind.
PH-31	6.22	View West of western wall showing bricked in sections between columns.
PH-32	6.23	View North/East of number 3 turbine (Parsons) with hood removed and generator (Fuji).
PH-33	6.24	View South/East of row of electrical control panels (11KV?).
PH-34	6.25	View North/East of number 4 synchronous condenser.
PH-35	-	View West from within control room of salt water distribution system.
PH-36	6.26	View South from within control room of panel and switches.
PH-37	-	View North into (number 3) reactor cage.
PH-38	6.27	View East along room with overhead cable trays.
PH-39	-	View South/East of tapered column base characteristic of columns to West of change in level (see plan). Columns to East of level change one rectangular.

8.0 PHOTOGRAPHIC REFERENCE PLAN





9.0 DIAGRAMMATIC RECORD AND DRAWINGS

Figure 9.1 A. C. Power Plant Building
Arrangement and details of Brickwork
Source: BHP. Drawing ref – E4471

UNABLE TO PRINT THIS DRAWING

10.0 HISTORIC PHOTOGRAPHIC RECORD

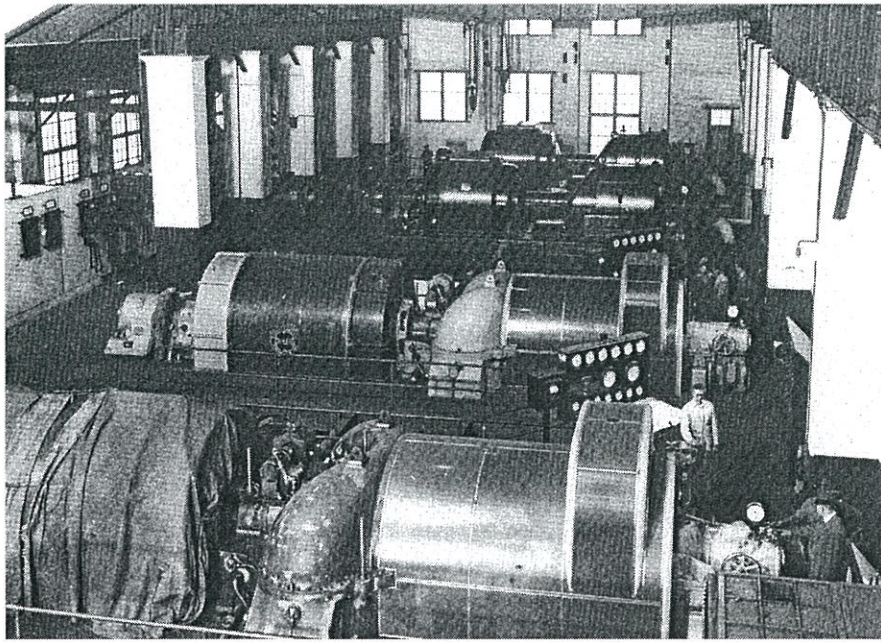


Figure 10.1: No4 Turbo Alternator being tested. No3, 2 and 1 alternators in background. 1938

Source Cranney (1999:95)

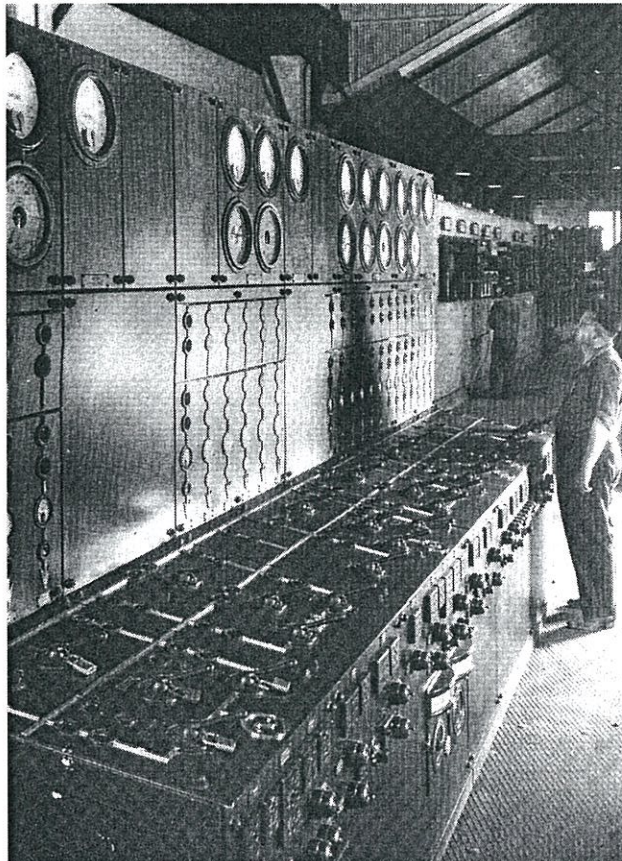


Figure 10.2 Power House control panel, 1938

Source: Cranney (1999:96)

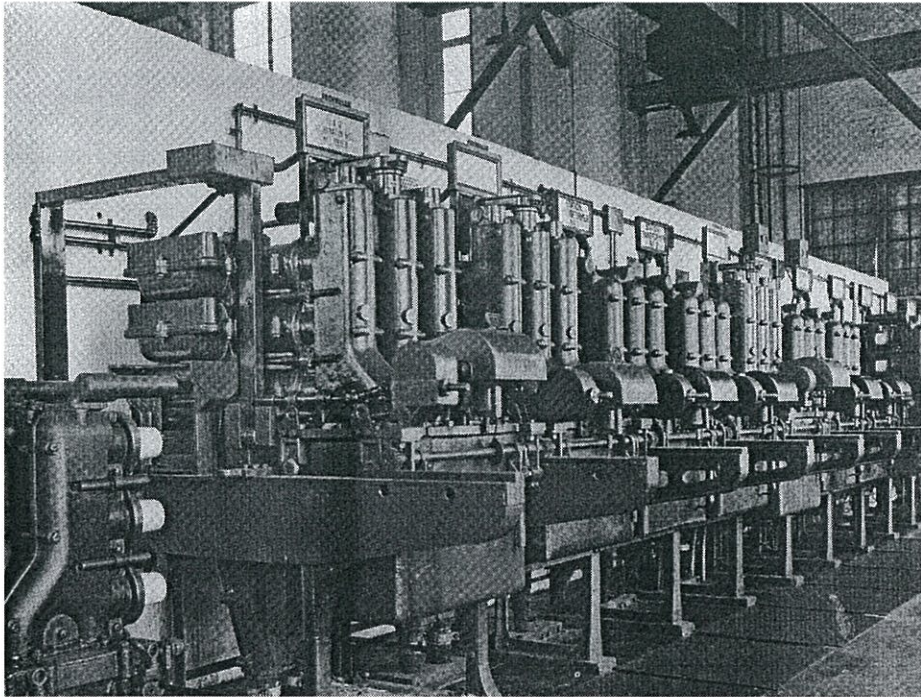


Figure 10.3 Rear of HT switchboard. 1934
Source: Cranney: (1999:93)

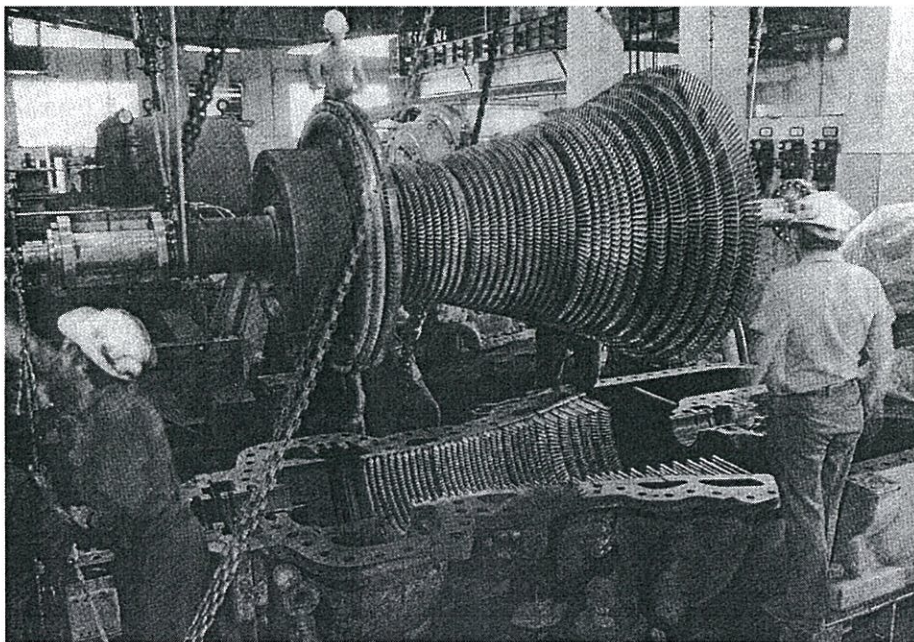


Figure 10.4 Installation of Brown Boveri Turbo Alternator. 1984
Source: Cranney: (1999:125)

ARCHIVAL RECORD

Power House

11.0 FULL FORMAT PHOTOGRAPHIC RECORD

Note: There are no full format photographs for this item.

12.0 INVENTORY OF EQUIPMENT FITMENTS AND FINISHES

ITEM	DESCRIPTION
Turbine No1	Original turbo alternator replaced by Brown Boveri T/A. Installed in 1984
Turbine No2	Original turbo alternator replaced in 1987 with new T/A.
Turbine No3	18 Mw Parsons T/A. Converted to 50 cycle power in 1975. Converted to Synchronous condenser in 1995. Origin 1936 - 1937.
Turbine No4	18Mw Parsons T/A. Converted to 50 cycle power in 1975. Converted to Synchronous condenser in 1994. Origin 1936 - 1937
Condensers 1,2,3,4.	Underslung condensers on floor below turbo alternators. Origin dates unknown. Associated pumps, condensers and filters also.
HT control switchboards	Interconnector control panel with dials, switches and marble insulative backing to some sections. Estimated origin 1937. Some switchboards removed.
Voltage regulator panel	Modern panel of switches etc.
Electrical reactor switches	Rear of HT switchboard. Switchgear in good condition. Some sets removed. Original items circa 1937.
Control room	Modern control panels etc.

13.0 APPENDICES

- 13.1 Appendix A: Manual camera negatives and photos
- 13.2 Appendix B: Digital images Proof Page and disk
- 13.3 Appendix C: Archive Drawing Register Disk

13.1 Appendix A: Manual camera negatives and photos

Refer to the final Archive Report master copy, to be submitted to the NSW Heritage Office, for negatives and additional mounted manual photographs

Appendix B: Digital images Proof Page and disk

Refer to the final Archive Report master copy, to be submitted to the NSW Heritage Office, for the digital images disc.



ARCHIVAL RECORD Power House



13.2 Appendix C: Archive Drawing Register Disk

Refer to the final Archive Report master copy, to be submitted to the NSW Heritage Office, for the drawing register disk. Also accompanying the master copy shall be full size prints of the drawings as included in Section 9.0 - "Diagrammatic Records & Drawings".