

6.0 SELECTED PHOTOGRAPHS

Figure 6.1 Opening to B.O.S. showing ladle car within.



Figure 6.2 View East of overlap of B.O.S, with open hearth building at left. Open Hearth building in foreground and Mould condition building in centre of image.



Figure 6.3 View South/East of Western end of B.O.S. Plant showing overlap with old open hearth building.



Figure 6.4 View East of entrance to scrap charging aisle.



Figure 6.5 Eastern facade of B.O.S. Plant showing teeming aisle (left) and hot metal charging aisle with rail tracks (right).



Figure 6.6 Precipitators to Eastern side of B.O.S. Plant.



Figure 6.7 View West of Southern side of B.O.S. Plant showing openings.



Figure 6.8 View of North/West of B.O.S. (right) and junction with open hearth building mould conditioning building at left.



Figure 6.9 Interior - View East of B.O.S. Plant from under open Hearth building. Cranes over teeming aisle (right) and charging aisle. Note ends of runways and old open hearth columns.



Figure 6.10 Interior view West of overlap between B.O.S. Building and open Hearth building. Open Hearth building at bottom of image.



Figure 6.11 Interior – View East towards teeming aisle showing crane and ladles.



Figure 6.12 Interior – View South/East of ladle repair area.



Figure 6.13 Interior – View South towards Lance holder.

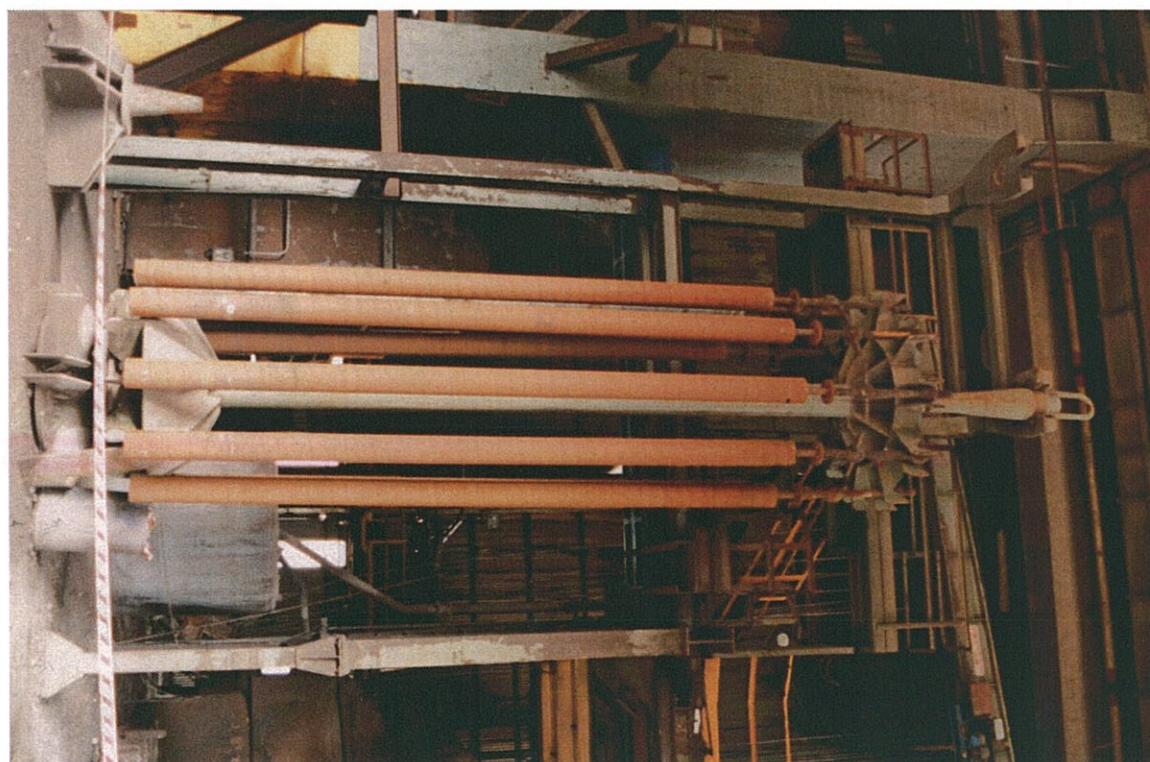


Figure 6.14 Interior – View South/East of B.O.S. Furnaces (number 2 on left), fume extraction ducts and scrap crane.



Figure 6.15 Interior – View East of two cranes in scrap charging aisle. (cranes 59 and 36 [50/50/15T]).



Figure 6.16 Interior – View South of number 1 B.O.S. Furnace.



Figure 6.17 Interior – View west of ladle weighbridge.



Figure 6.18 Interior – 300/75/15 T Charging Crane.



Figure 6.19 Interior – View North of ladle treatment plant (right) and ladle transfer car.

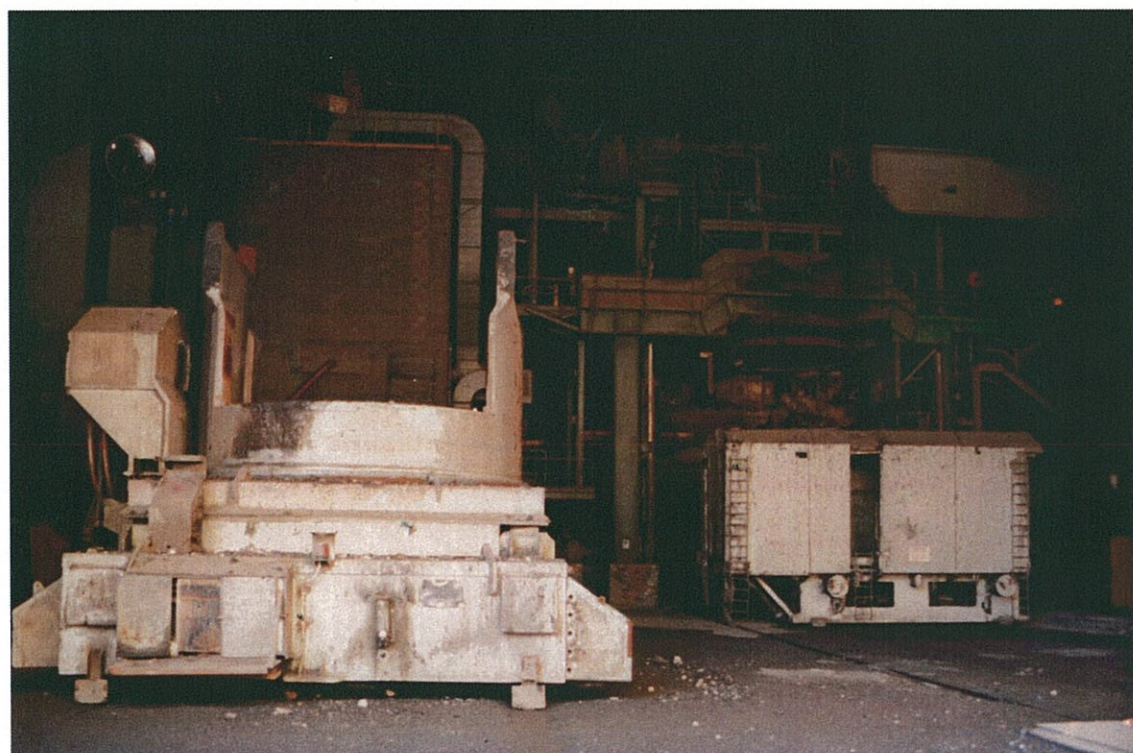


Figure 6.20 Interior – View North of ladle slag rake and ladle car in foreground.



Figure 6.21 Interior – View West of ladles and lids.



Figure 6.22 Interior – View North of slide gate nozzle platform.

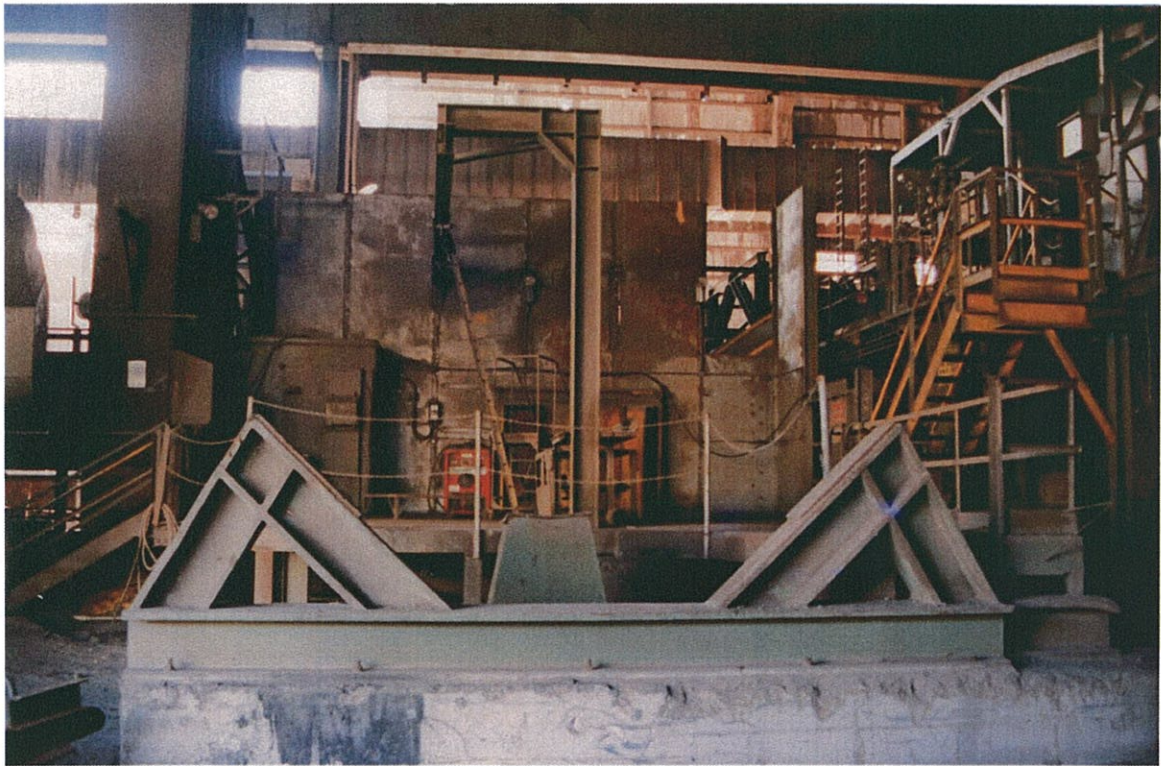


Figure 6.23 Interior – View West of teeming aisle.



7.0 NEGATIVE REFERENCE LIST

The following information relates to the complete set of negatives taken for the recording of this building. Under each Roll Number is a table containing the negative numbers and a description of each frame taken of that roll. The roll and negative numbers, position and direction of frame taken are referenced in the plan in section 9.0 – photographic reference plan. The numbers in the column titled "Figure No." relate to the selected photographs in section 7.0 of this report. Items marked with a dash in this column have prints located in the appendix along with the complete set of negatives.

ROLL 9857 – 23/03/2000

Camera: Nikon FE. F 1:3.5

Film: Soulcour coloured film ASA 100

Neg No.	Figure No.	Description
5A	6.5	Eastern facade of B.O.S. Plant showing teeming aisle (left) and hot metal charging aisle with rail tracks (right).
6A	6.6	Precipitators to Eastern side of B.O.S. Plant.
7A	6.7	View West of Southern side of B.O.S. Plant showing openings.
8A	6.1	Opening to B.O.S. showing ladle car within.
9A	6.8	View of North/West of B.O.S. (right) and junction with open hearth building mould conditioning building at left.
10A	6.3	View South/East of Western end of B.O.S. Plant showing overlap with old open hearth building.
11A	6.2	View East of overlap of B.O.S, with open hearth building. Mould condition building in centre of image.

ROLL 9878 – 29/03/2000

Camera: Nikon FE. F 1:3.5

Film: Soulcour coloured film ASA 100

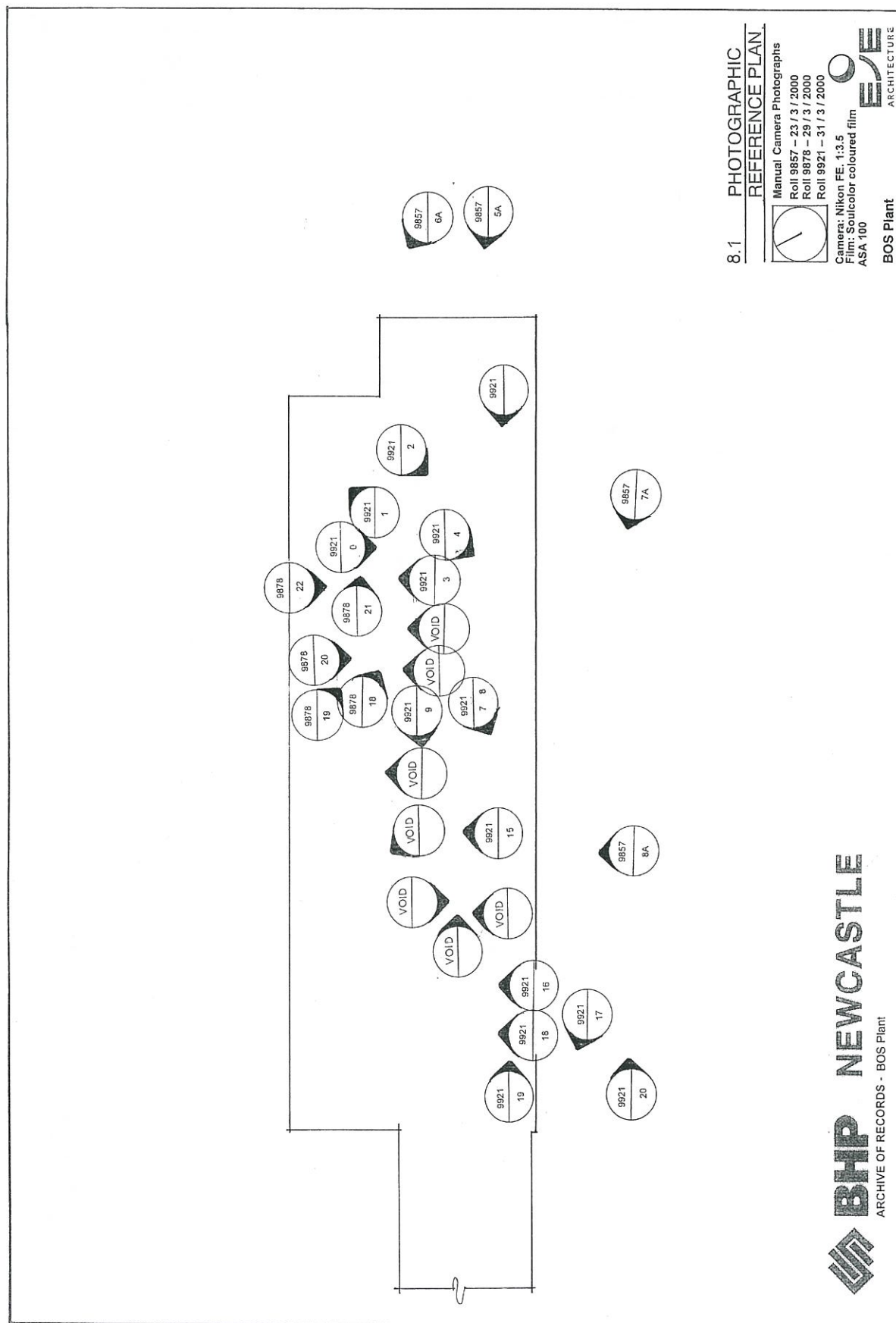
Neg No.	Figure No.	Description
6	6.9	Interior - View East of B.O.S. Plant from under open Hearth building. Cranes over teeming aisle (right) and charging aisle. Note ends of runways and old open hearth columns.
7	6.10	Interior – View West of overlap between B.O.S. Building and open Hearth building. Open Hearth building at bottom of image.
8	6.11	Interior – View East towards teeming aisle showing crane and ladles.
9	-	Interior - Detail of crane (teeming aisle).
10	6.12	Interior – View South/East of ladle repair area.
11	-	Interior – View West of crane and rails in charging aisle. Open hearth trusses in background.
12	6.13	Interior – View South towards Lance holder.
13	-	Interior – Southern wall of B.O.S. (teeming aisle) and column support for dual crane runways.
14	6.4	View Eastern of entrance to scrap charging aisle.
15	-	Interior – View South of micro alloy pouring pit.
16	-	Interior – View South of Ladle Metallurgy Control booth.
17	-	Interior – View South/East of storage area in scrap charging aisle.
18	6.14	Interior – View South/East of B.O.S. Furnaces (number 2 on left), fume extraction ducts and scrap crane.
19	-	Interior – View South of flue and ductwork over number 2 B.O.S. Furnace.
20	-	Interior – View South of number 2 B.O.S. Furnace.
21	6.15	Interior – View East of two cranes in scrap charging aisle. (cranes 59 and 36 [50/50/15T]).
22	6.16	Interior – View South of number 1 B.O.S. Furnace.

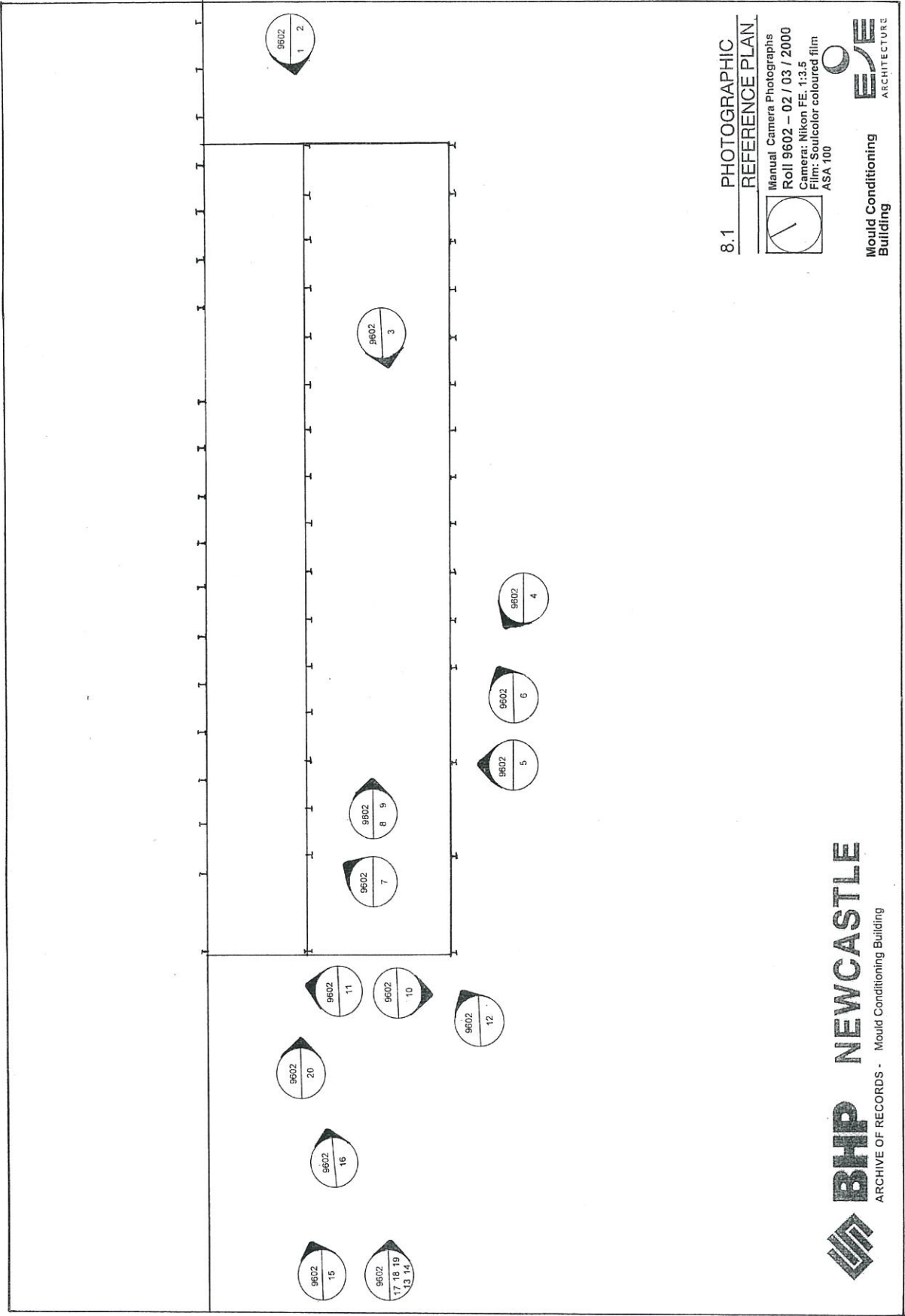
ROLL 9921 – 31/3/2000

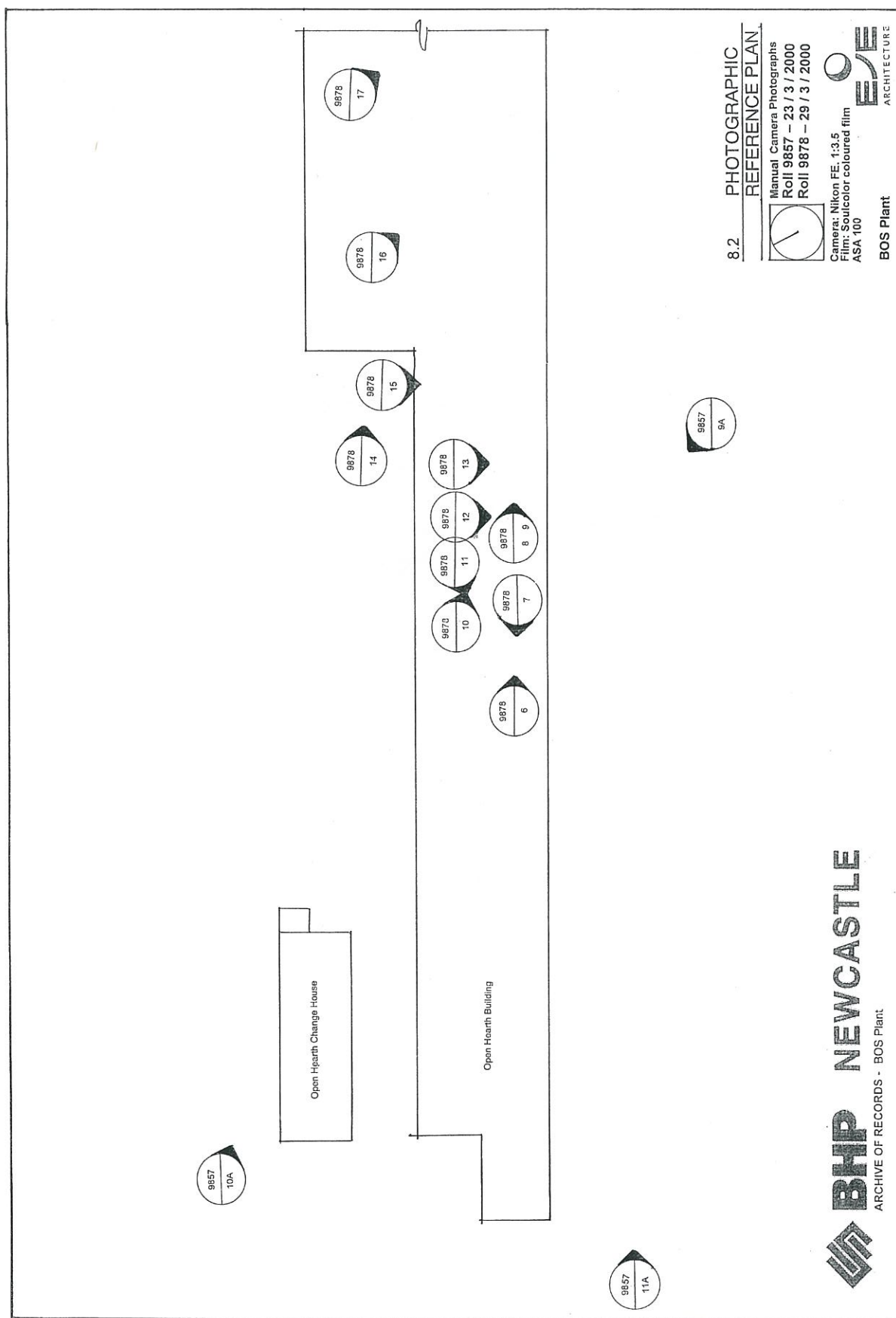
Camera: Nikon FE. F 1:3.5

Film: Soulcolor coloured film ASA 100

Neg No.	Figure No.	Description
0	-	Interior – View South of Eastern side of B.O.S. Furnace number 1 showing south valve outlets and North valve inlets and Furnace trunnion.
01	-	Interior – View North/East view of crane hook scrap ramp and B.O.S. precipitators in background.
02	6.17	Interior – View west of ladle weighbridge.
03	-	Interior – Number 1 Furnace and slag taphole.
04	-	Interior – Number 1 ladle transfer pit and cars.
05	-	
06	-	
07	6.18	Interior – 300/75/15 T Charging Crane.
08	-	Interior – Hooks from Charging Crane.
09	-	Interior – view west of ladle treatment plant and opening in building to bloom caster (left).
10	-	
11	-	
12	-	
13	-	
14	-	
15	6.19	Interior – View North of ladle treatment plant (right) and ladle transfer car.
16	6.20	Interior – View North of ladle slag rake and ladle car in foreground.
17	6.21	Interior – View West of ladles and lids.
18	6.22	Interior – View North of slide gate nozzle platform.
19	-	Interior – View East along teeming aisle.
20	-	View East of opening in Southern facade (on left) and bloom caster mill to right.
21	6.23	Interior – View West of teeming aisle.







9.0 DIAGRAMMATIC RECORD AND DRAWINGS

Figure 9.1: BOS Plant
Cross Section through building between portals 1 & 2 (1962)

Source: BHP drawing Ref -82340/2

This drawing can't be printed

Figure 9.2: BOS Plant
Section through No.1 Furnace, Looking east showing scrap / metalcharging. (1962)

Source: BHP drawing Ref -84381/1

This drawing can't be printed

Figure 9.3: BOS Plant
General Layout of Shop (1967)

Source: BHP Drawing Ref -103770 (part 1)

This drawing can't be printed

Figure 9.4: BOS Plant
General Layout of Shop (1967)

Source: BHP Drawing Ref -103770 (part 2)

This drawing can't be printed