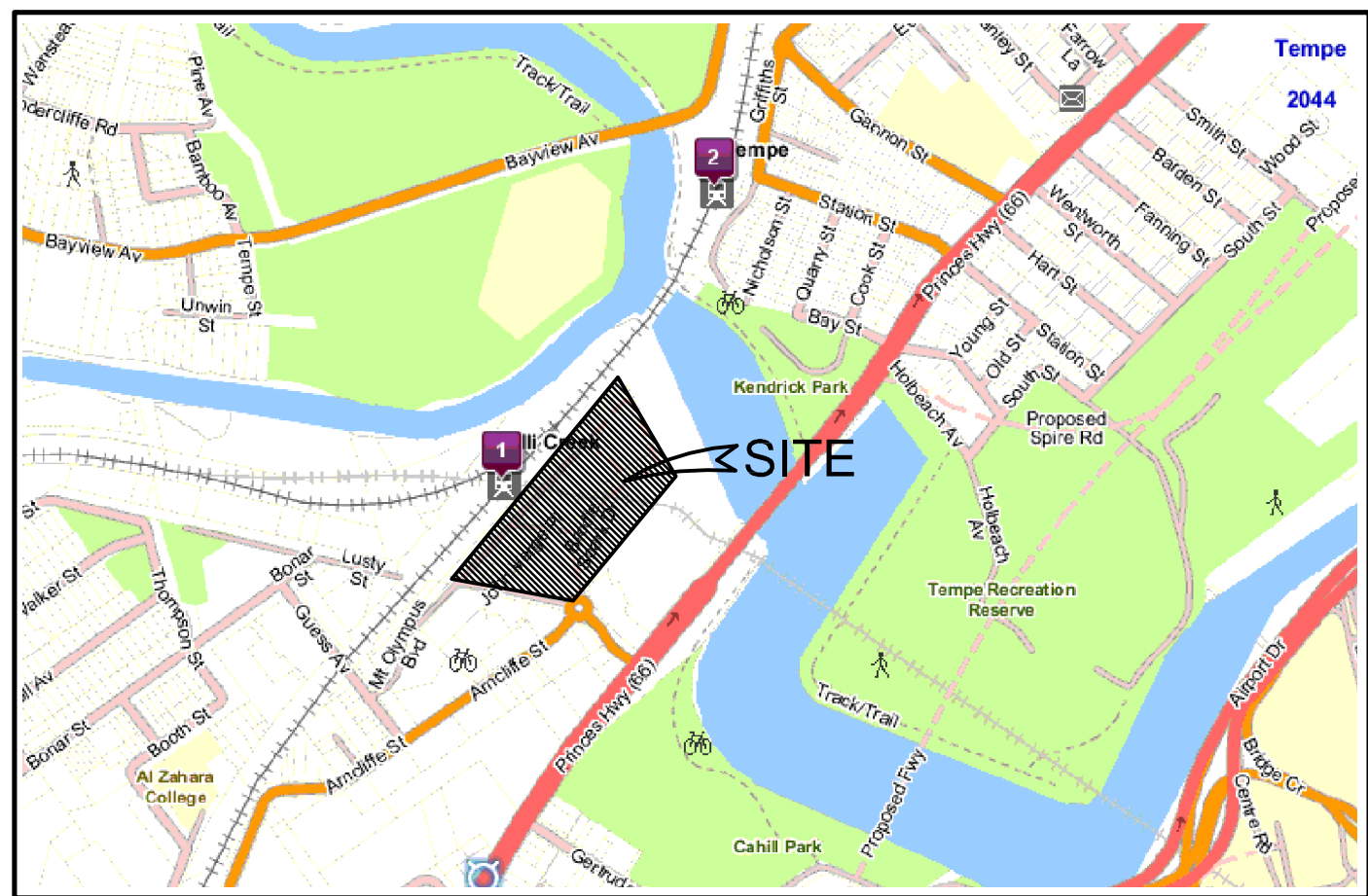


DISCOVERY POINT

WOLLI CREEK, NEW SOUTH WALES

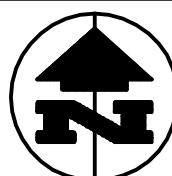


LOCALITY PLAN
NOT TO SCALE

CONCEPT PLAN - DRAWING INDEX

| | |
|---------|--|
| CP - 01 | TITLE PAGE, LOCALITY PLAN AND DRAWING INDEX |
| CP - 02 | STORMWATER MANAGEMENT PLAN SHEET 1 OF 2 |
| CP - 03 | STORMWATER MANAGEMENT PLAN SHEET 2 OF 2 |
| CP - 04 | BULK EARTHWORKS PLAN SHEET 1 OF 2 |
| CP - 05 | BULK EARTHWORKS PLAN SHEET 1 OF 2 |
| CP - 06 | BULK EARTHWORKS CROSS SECTIONS |
| CP - 07 | STORMWATER LONGITUDINAL SECTION |
| CP - 11 | EROSION AND SEDIMENT CONTROL PLAN SHEET 1 OF 2 |
| CP - 12 | EROSION AND SEDIMENT CONTROL PLAN SHEET 2 OF 2 |
| CP - 13 | EROSION AND SEDIMENT CONTROL DETAILS SHEET |





This information shall be copyright except for the sole purpose of assisting the organisation named in this document in performing tasks associated with the nominated project. This drawing and associated or derived information shall not be used for other purposes or transferred to others without written permission of 'Smart Civil'.

DO NOT SCALE DRAWINGS, USE FIGURED DIMENSIONS
REFER COVER SHEET FOR NOTES UNLESS NOTED OTHERWISE

1 : 1000 10 5 0 10 20 30 40 50 A1
1 : 2000 A3

| Rev. | Revision Description | By. | App. | Date | Rev. | Revision Description | By. | App. | Date |
|------|-------------------------|-----|------|---------|------|----------------------|-----|------|------|
| | | | | | | | | | |
| | | | | | | | | | |
| | | | | | | | | | |
| | | | | | | | | | |
| | | | | | | | | | |
| B | Concept Plan Submission | JM | | 4.5.10 | | | | | |
| A | Concept Plan submission | JM | | 20.4.10 | | | | | |



SMART CIVIL PTY LTD
ACN 123 676 388
Ground Floor, 65 Chandos Street St Leonards NSW 2065
Ph: (02) 9906 7322 Fax: (02) 9504 8858
Email: sydney@smarcivil.com.au
Web Site: www.smarcivil.com.au

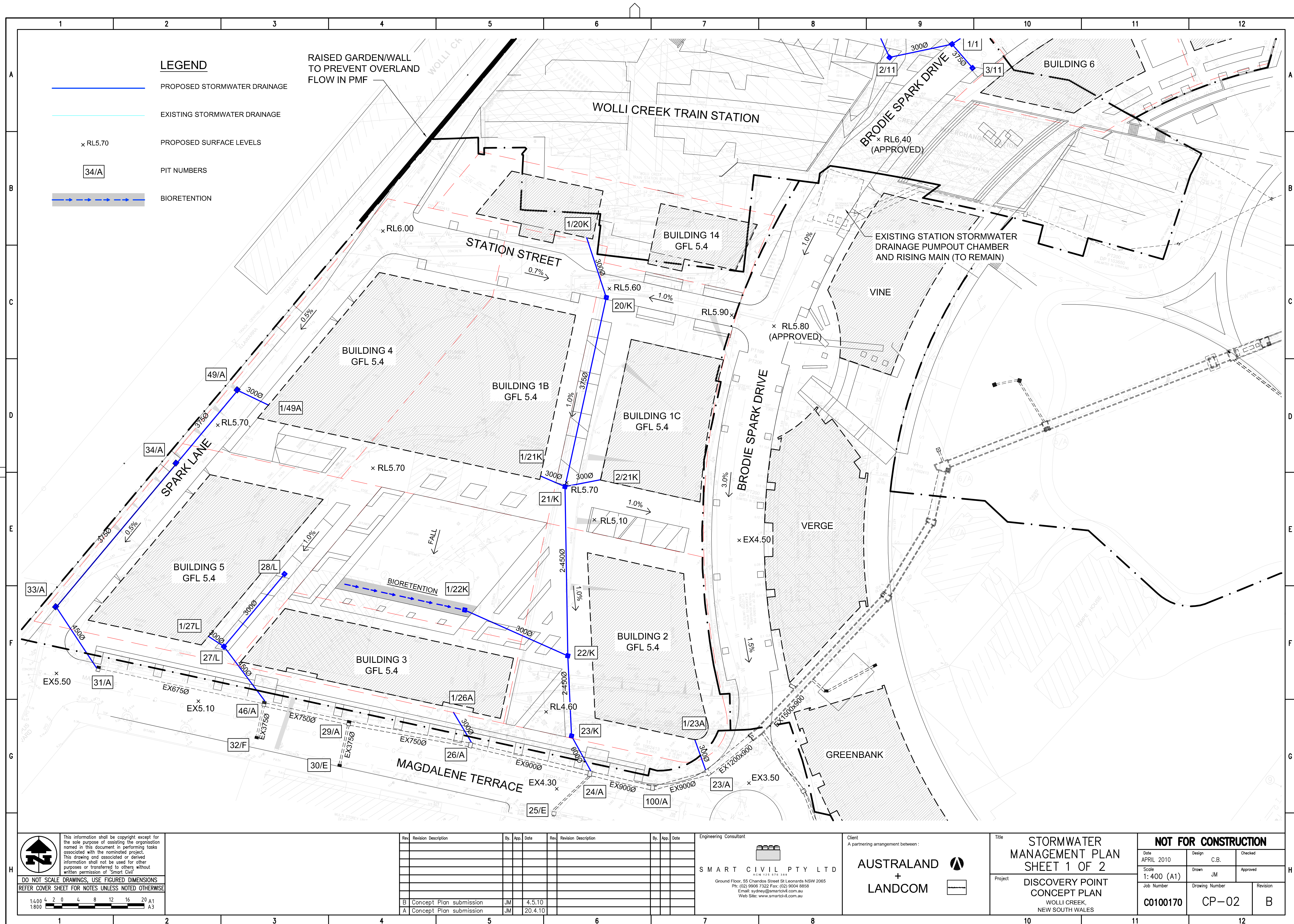
Client
A partnering arrangement between :

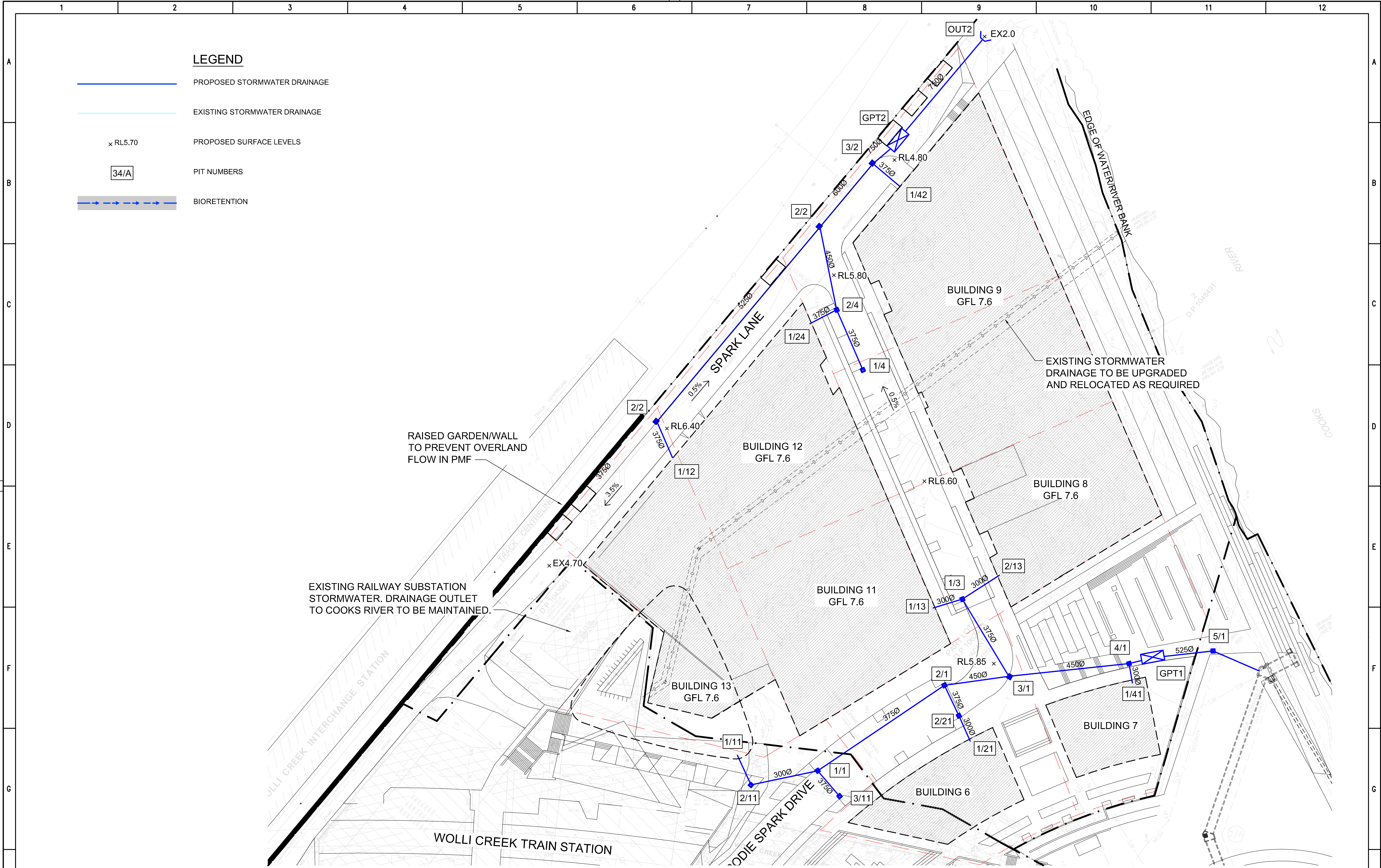
AUSTRALAND + LANDCOM

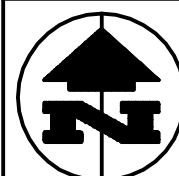
Title
TITLE PAGE,
LOCALITY PLAN AND
DRAWING INDEX

Project
DISCOVERY POINT
CONCEPT PLAN
WOLLI CREEK,
NEW SOUTH WALES

| NOT FOR CONSTRUCTION | | | |
|------------------------|-------------------------|---------------|--|
| Date APRIL 2010 | Design C.B. | Checked | |
| Scale 1:1000 (A1) | Drawn JM | Approved | |
| Job Number C0100170 | Drawing Number CP-01 | Revision B | |







This information shall be copyright except for the sole purpose of assisting the organisation named in this document in performing tasks associated with the nominated project. This drawing and associated or derived information shall not be used for other purposes or transferred to others without written permission of 'Smart Civil'.

DO NOT SCALE DRAWINGS, USE FIGURED DIMENSIONS
REFER COVER SHEET FOR NOTES UNLESS NOTED OTHERWISE

1:400

4

2

0

4

8

12

16

20

A1

1:600

4

2

0

4

8

12

16

20

A3

| Rev. | Revision Description | By. | App. | Date | Rev. | Revision Description | By. | App. | Date |
|------|-------------------------|-----|------|---------|------|----------------------|-----|------|------|
| | | | | | | | | | |
| | | | | | | | | | |
| | | | | | | | | | |
| | | | | | | | | | |
| | | | | | | | | | |
| | | | | | | | | | |
| | | | | | | | | | |
| B | Concept Plan submission | JM | | 4.5.10 | | | | | |
| A | Concept Plan submission | JM | | 20.4.10 | | | | | |

Engineering Consultant



SMART CIVIL PTY LTD
ACN 123 676 388
Ground Floor, 55 Chandos Street St Leonards NSW 2065
Ph: (02) 9906 7322 Fax: (02) 9004 8858
Email: sydney@smarcivil.com.au
Web Site: www.smarcivil.com.au

Client

A partnering arrangement between :

AUSTRALAND

+

LANDCOM

Title

STORMWATER
MANAGEMENT PLAN
SHEET 2 OF 2

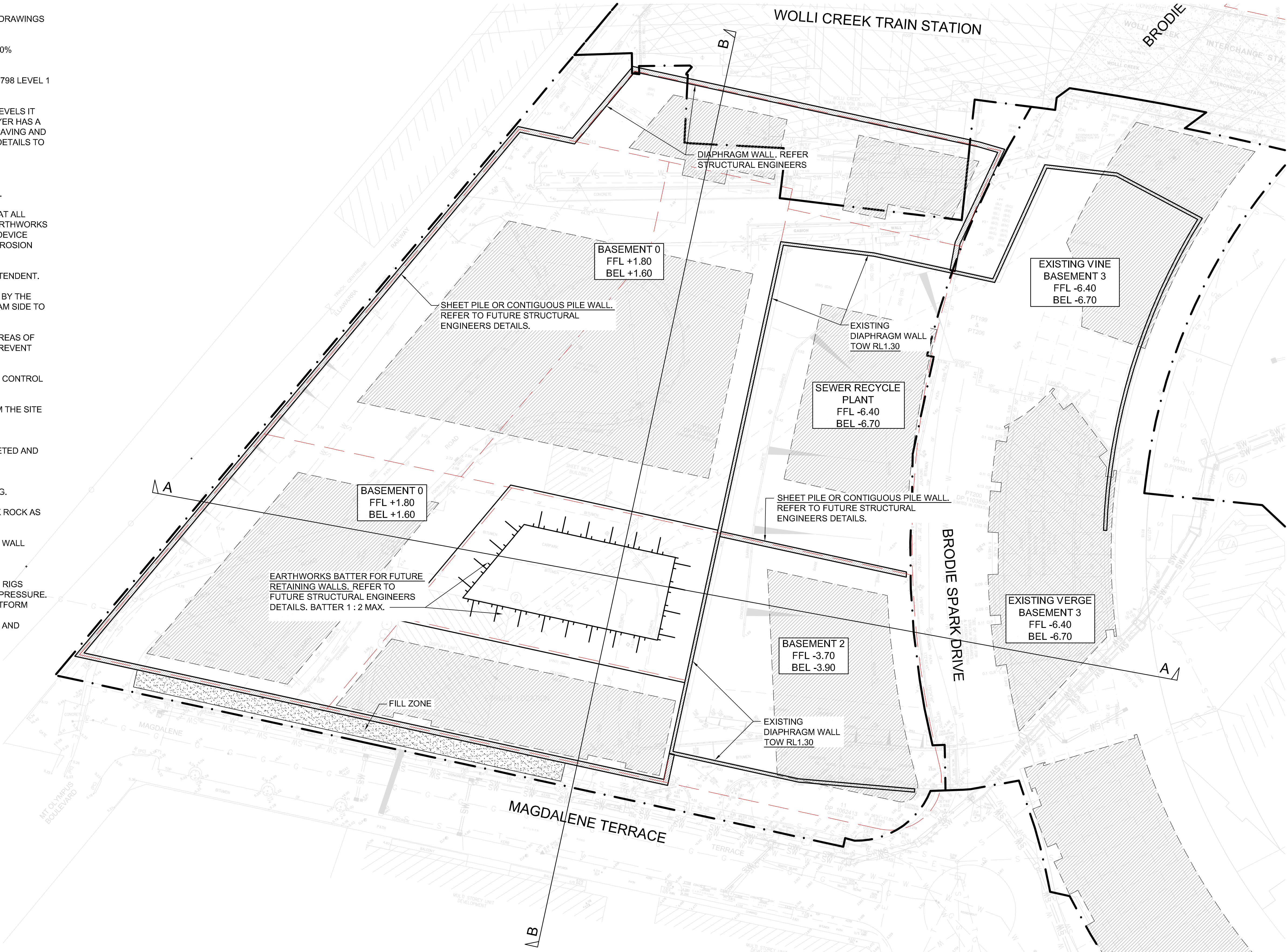
Project

DISCOVERY POINT
CONCEPT PLAN
WOLLI CREEK,
NEW SOUTH WALES

| NOT FOR CONSTRUCTION | | | |
|----------------------|----------------|----------|--|
| Date | Design | Checked | |
| APRIL 2010 | C.B. | | |
| Scale | Drawn | Approved | |
| 1:400 (A1) | JM | | |
| Job Number | Drawing Number | Revision | |
| C0100170 | CP-03 | B | |

NOTES

1. BUILDING LOCATIONS TO BE CONFIRMED ON ARCHITECTS DRAWINGS PRIOR TO COMMENCEMENT OF EARTHWORKS.
2. BUILDING AND PAVED AREAS SHALL BE COMPACTED TO 100% STANDARD COMPACTION AND PROOF ROLLED.
3. ALL EARTHWORKS TO BE DONE IN ACCORDANCE WITH AS3798 LEVEL 1 SUPERVISION.
4. FOR THE PURPOSE OF CALCULATING BULK EARTHWORK LEVELS IT HAS BEEN ASSUMED THAT BUILDING SLAB AND BLINDING LAYER HAS A TOTAL THICKNESS OF 200mm. IT HAS BEEN ASSUMED THAT PAVING AND BEDDING LAYER HAS A TOTAL THICKNESS OF 200mm. SLAB DETAILS TO BE CONFIRMED ON STRUCTURAL DRAWINGS PRIOR TO COMMENCEMENT OF EARTHWORKS.
5. TOPSOIL MAY BE STOCKPILED AND REUSED IN AREAS OF LANDSCAPING IF APPROVED BY THE LANDSCAPE ARCHITECT.
6. CONSTRUCT SHAKER GRID FOR CONSTRUCTION TRAFFIC AT ALL POINTS OF EXIT FROM THE SITE. PRIOR TO COMMENCING EARTHWORKS OPERATIONS. CLEAN OUT AND MAINTAIN THE SHAKE DOWN DEVICE REGULARLY TO ENSURE EFFICIENT OPERATION. REFER TO EROSION AND SEDIMENT CONTROL PLAN DWG MP-11 & 12.
7. SPOIL TO BE DISPOSED OF AS DIRECTED BY THE SUPERINTENDENT.
8. STOCKPILED SPOIL ON SITE TO BE LOCATED AS DIRECTED BY THE SUPERINTENDENT. CONSTRUCT SILT FENCE ON DOWNSTREAM SIDE TO PREVENT TRANSPORT OF SEDIMENT.
9. CONSTRUCT SILT FENCE ON DOWNSTREAM SIDE OF ALL AREAS OF EARTHWORKS AS DIRECTED BY THE SUPERINTENDENT TO PREVENT THE TRANSPORT OF SEDIMENT.
10. THE SUB-CONTRACTOR SHALL PROVIDE ADEQUATE DUST CONTROL TO ALL AREAS.
11. PROVIDE FOR PUMPOUT OF STORMWATER RUNOFF FROM THE SITE AS WELL AS GROUNDWATER INFILTRATION TO EXCAVATION.
12. EXCAVATION OF SOIL BELOW WATER TABLE SHOULD NOT COMMENCE UNTIL THE DIAPHRAGM WALL HAS BEEN COMPLETED AND THE WATER TABLE CAN BE LOWERED BY DEWATERING.
13. DO NOT EXCAVATE SOIL BELOW RAMP LEVEL UNTIL THE TEMPORARY RAMP HAS BEEN BUILT TO BE SELF-SUPPORTING.
14. PROVIDE SHOTCRETE AND ANCHORS TO AREAS OF WEAK ROCK AS REQUIRED TO MAINTAIN VERTICAL EXCAVATED FACE.
15. CAPPING BEAM TO BE INSTALLED ON TOP OF DIAPHRAGM WALL WHERE INDICATED. FOR CAPPING BEAM DETAILS REFER TO STRUCTURAL DRAWINGS.
16. PROVIDE A HARDSTAND WORKING PLATFORM FOR PILING RIGS WHICH WILL NEED TO HAVE A 350 KPa ALLOWABLE BEARING PRESSURE. THE CONTRACTOR IS REQUIRED DESIGN THIS WORKING PLATFORM WITH NECESSARY RECOMMENDATION FROM A QUALIFIED GEOTECHNICAL ENGINEER FOR MATERIALS SPECIFICATIONS AND COMPACTION REQUIREMENTS.



This information shall be copyright except for the sole purpose of assisting the organisation named in this document in performing tasks associated with the nominated project. This drawing and associated or derived information shall not be used for other purposes or transferred to others without written permission of 'Smart Civil'.

DO NOT SCALE DRAWINGS, USE FIGURED DIMENSIONS
REFER COVER SHEET FOR NOTES UNLESS NOTED OTHERWISE



| Rev. | Revision Description | By. | App. | Date | Rev. | Revision Description | By. | App. | Date |
|------|-------------------------|-----|------|---------|------|----------------------|-----|------|------|
| | | | | | | | | | |
| | | | | | | | | | |
| | | | | | | | | | |
| | | | | | | | | | |
| | | | | | | | | | |
| | | | | | | | | | |
| | | | | | | | | | |
| B | Concept Plan submission | JM | | 4.5.10 | | | | | |
| A | Concept Plan submission | JM | | 20.4.10 | | | | | |

Engineering Consultant

SMART CIVIL PTY LTD
ACN 123 676 388
Ground Floor, 65 Chandos Street St Leonards NSW 2065
Ph: (02) 9906 7322 Fax: (02) 9004 8858
Email: sydney@smartsivil.com.au
Web Site: www.smartsivil.com.au

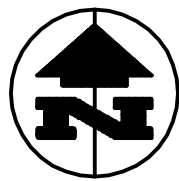
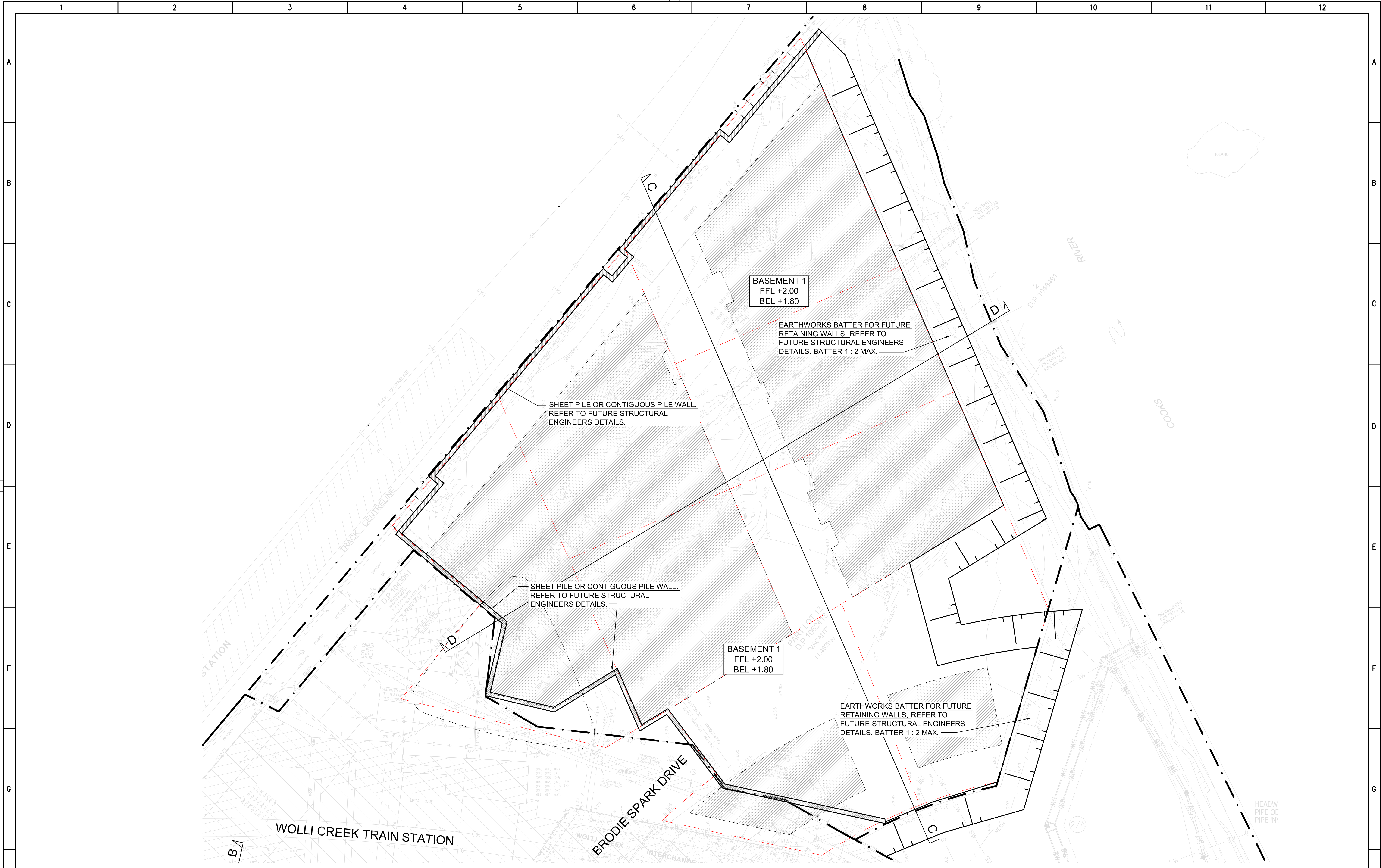
Client
A partnering arrangement between :

AUSTRALAND + **LANDCOM**

Title **BULK EARTHWORKS PLAN**
SHEET 1 OF 2

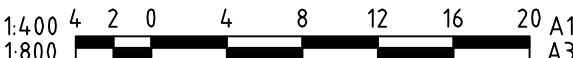
Project **DISCOVERY POINT CONCEPT PLAN**
WOLLI CREEK,
NEW SOUTH WALES

| NOT FOR CONSTRUCTION | | |
|-------------------------------|--------------------------------|----------------------|
| Date APRIL 2010 | Design C.B. | Checked |
| Scale 1:400 (A1) | Drawn JM | Approved |
| Job Number C0100170 | Drawing Number CP-04 | Revision B |



This information shall be copyright except for the sole purpose of assisting the organisation named in this document in performing tasks associated with the nominated project. This drawing and associated or derived information shall not be used for other purposes or transferred to others without written permission of 'Smart Civil'.

DO NOT SCALE DRAWINGS, USE FIGURED DIMENSIONS
REFER COVER SHEET FOR NOTES UNLESS NOTED OTHERWISE



| Rev. | Revision Description | By. | App. | Date | Rev. | Revision Description | By. | App. | Date |
|------|-------------------------|-----|------|---------|------|----------------------|-----|------|------|
| | | | | | | | | | |
| | | | | | | | | | |
| | | | | | | | | | |
| | | | | | | | | | |
| | | | | | | | | | |
| | | | | | | | | | |
| | | | | | | | | | |
| B | Concept Plan submission | JM | | 4.5.10 | | | | | |
| A | Concept Plan submission | JM | | 20.4.10 | | | | | |

Engineering Consultant

SMART CIVIL PTY LTD
ACN 123 676 388
Ground Floor, 65 Chandos Street St Leonards NSW 2065
Ph: (02) 9906 7322 Fax: (02) 9004 8858
Email: sydney@smartsivil.com.au
Web Site: www.smartsivil.com.au

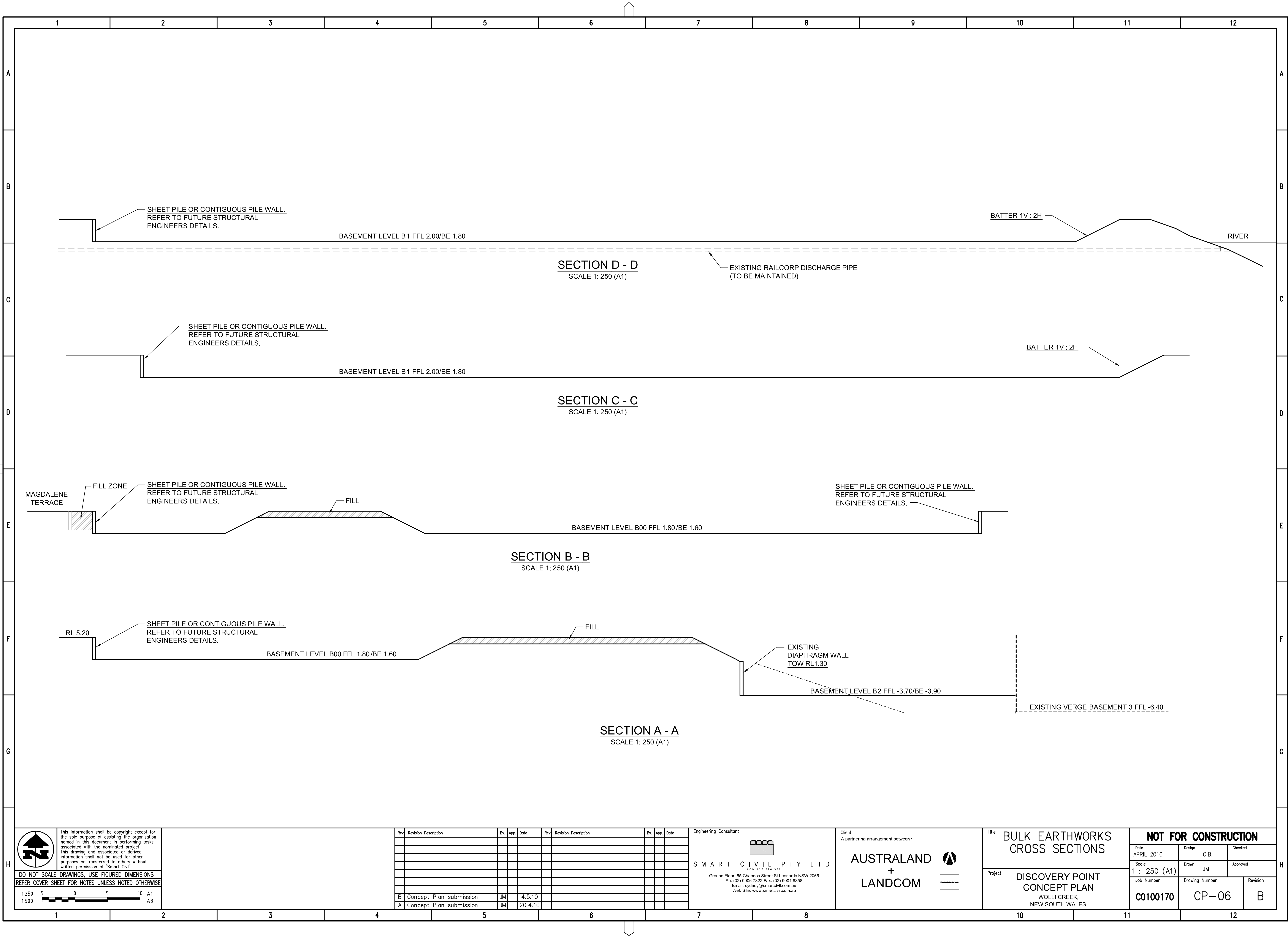
Client
A partnering arrangement between :

AUSTRALAND 
+ LANDCOM 

Title **BULK EARTHWORKS PLAN**
SHEET 2 OF 2

Project **DISCOVERY POINT CONCEPT PLAN**
WOLLI CREEK,
NEW SOUTH WALES

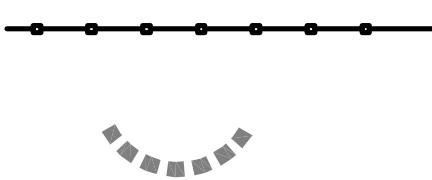
| NOT FOR CONSTRUCTION | | | | |
|-------------------------------|--------------------------------|----------------------|--|--|
| Date APRIL 2010 | Design C.B. | Checked | | |
| Scale 1:400 (A1) | Drawn JM | Approved | | |
| Job Number C0100170 | Drawing Number CP-05 | Revision B | | |



EROSION AND SEDIMENT CONTROL NOTES.

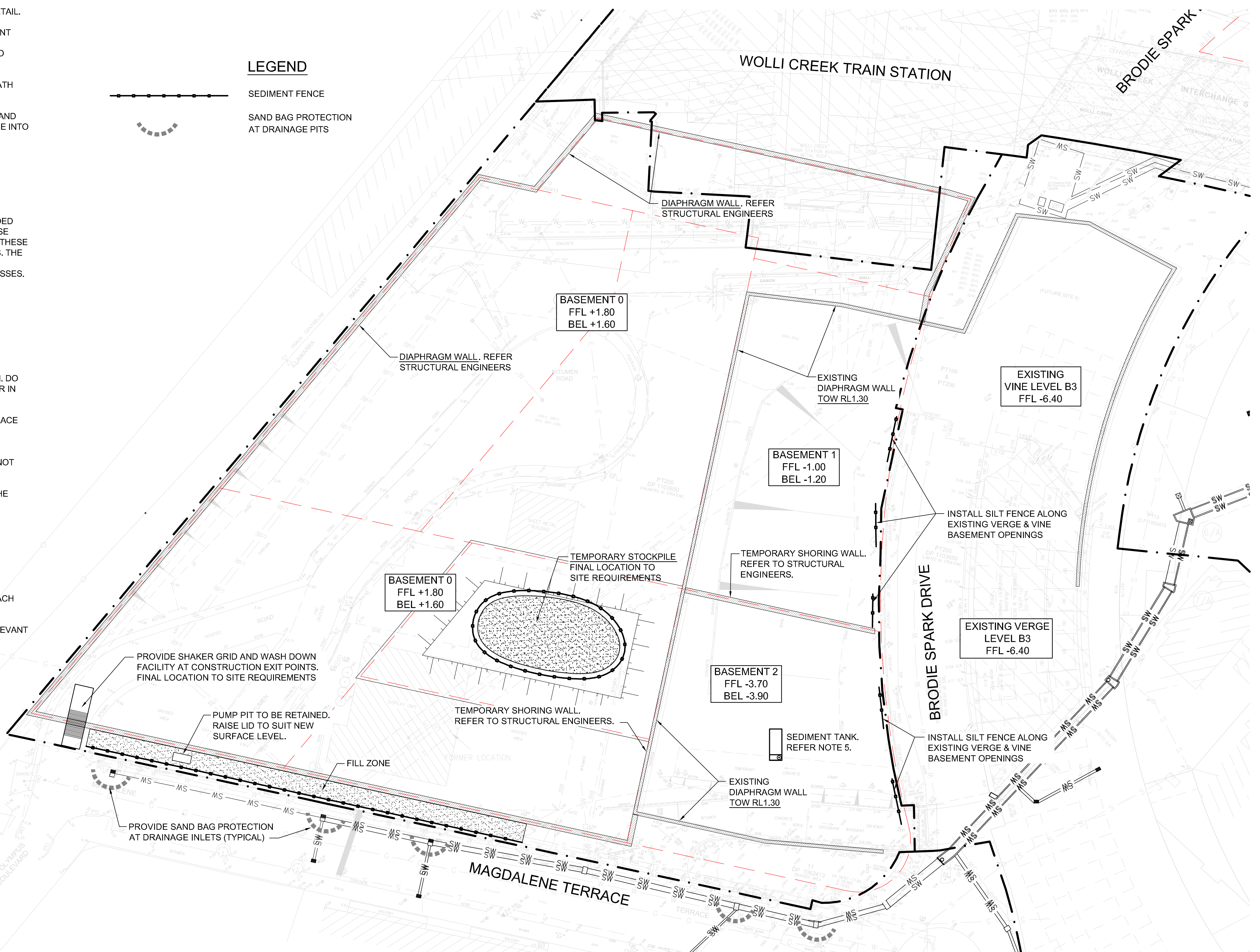
1. REFER TO STRUCTURAL ENGINEER FOR SHORING DIAPHRAGM WALL DETAIL.
2. BULK EARTHWORKS LEVELS SHOWN ALLOW FOR 200mm THICK PAVEMENT
3. ALL SERVICES CHECKS AND RELOCATIONS TO BE COMPLETED PRIOR TO START OF EXCAVATION WORKS.
4. PROVIDE PROTECTION FOR PEDESTRIANS AT ANY TEMPORARY FOOTPATH CROSSINGS.
5. PROVIDE PORTABLE SEDIMENTATION TANK . ALL SITE GROUND WATER AND RUNOFF TO DRAIN THROUGH TANK FOR TREATMENT PRIOR TO DISCHARGE INTO COUNCIL'S DRAINAGE OR COOKS RIVER.
- 6.ALL WORK SHALL BE GENERALLY CARRIED OUT IN ACCORDANCE WITH:
(A) LOCAL AUTHORITY REQUIREMENTS,
(B) EPA - POLLUTION CONTROL MANUAL FOR URBAN STORMWATER,
(C) DEPARTMENT OF CONSERVATION AND LAND MANAGEMENT MANUAL- URBAN EROSION & SEDIMENT CONTROL".
7. EROSION AND SEDIMENT CONTROL DRAWINGS AND NOTES ARE PROVIDED FOR THE WHOLE OF THE WORKS. SHOULD THE CONTRACTOR STAGE THESE WORKS THEN THE DESIGN MAY REQUIRE TO BE MODIFIED. VARIATION TO THESE DETAILS MAY REQUIRE TO BE APPROVED BY THE RELEVANT AUTHORITIES. THE EROSION AND SEDIMENT CONTROL PLAN SHALL BE IMPLEMENTED AND ADOPTED TO MEET THE VARYING SITUATIONS AS WORK ON SITE PROGRESSES.
8. MAINTAIN ALL EROSION AND SEDIMENT CONTROL DEVICES TO THE SATISFACTION OF THE SUPERINTENDENT AND THE LOCAL AUTHORITY.
9. WHEN STORMWATER PITS ARE CONSTRUCTED PREVENT SITE RUNOFF ENTERING THE PITS UNLESS SILT FENCES ARE ERECTED AROUND PITS.
10. MINIMIZE THE AREA OF SITE BEING DISTURBED AT ANY ONE TIME.
11. PROTECT ALL STOCKPILES OF MATERIALS FROM SCOUR AND EROSION. DO NOT STOCKPILE LOOSE MATERIAL IN ROADWAYS, NEAR DRAINAGE PITS OR IN WATERCOURSES.
12. ALL SOIL AND WATER CONTROL MEASURES ARE TO BE PUT BACK IN PLACE AT THE END OF EACH WORKING DAY, AND MODIFIED TO BEST SUIT SITE CONDITIONS.
13. CONTROL WATER FROM UPSTREAM OF THE SITE SUCH THAT IT DOES NOT ENTER THE DISTURBED SITE.
14. ALL CONSTRUCTION VEHICLES SHALL ENTER AND EXIT THE SITE VIA THE APPROVED CONSTRUCTION ENTRY/EXIT ROUTE.
15. ALL VEHICLES LEAVING THE SITE SHALL BE CLEANED AND INSPECTED BEFORE LEAVING.
16. MAINTAIN ALL STORMWATER PIPES AND PITS CLEAR OF DEBRIS AND SEDIMENT. INSPECT STORMWATER SYSTEM AND CLEAN OUT AFTER EACH STORM EVENT.
17. CLEAN OUT ALL EROSION AND SEDIMENT CONTROL DEVICES AFTER EACH STORM EVENT.
18. ALL DISTURBED AREAS SHALL BE REVEGETATED AS SOON AS THE RELEVANT WORKS HAVE BEEN COMPLETED.

LEGEND



SEDIMENT FENCE

SAND BAG PROTECTION
AT DRAINAGE PITS



This information shall be copyright except for the sole purpose of assisting the organisation named in this document in performing tasks associated with the nominated project. This drawing and associated or derived information shall not be used for other purposes or transferred to others without written permission of "Smart Civil"

DO NOT SCALE DRAWINGS, USE FIGURED DIMENSIONS
REFER COVER SHEET FOR NOTES UNLESS NOTED OTHERWISE



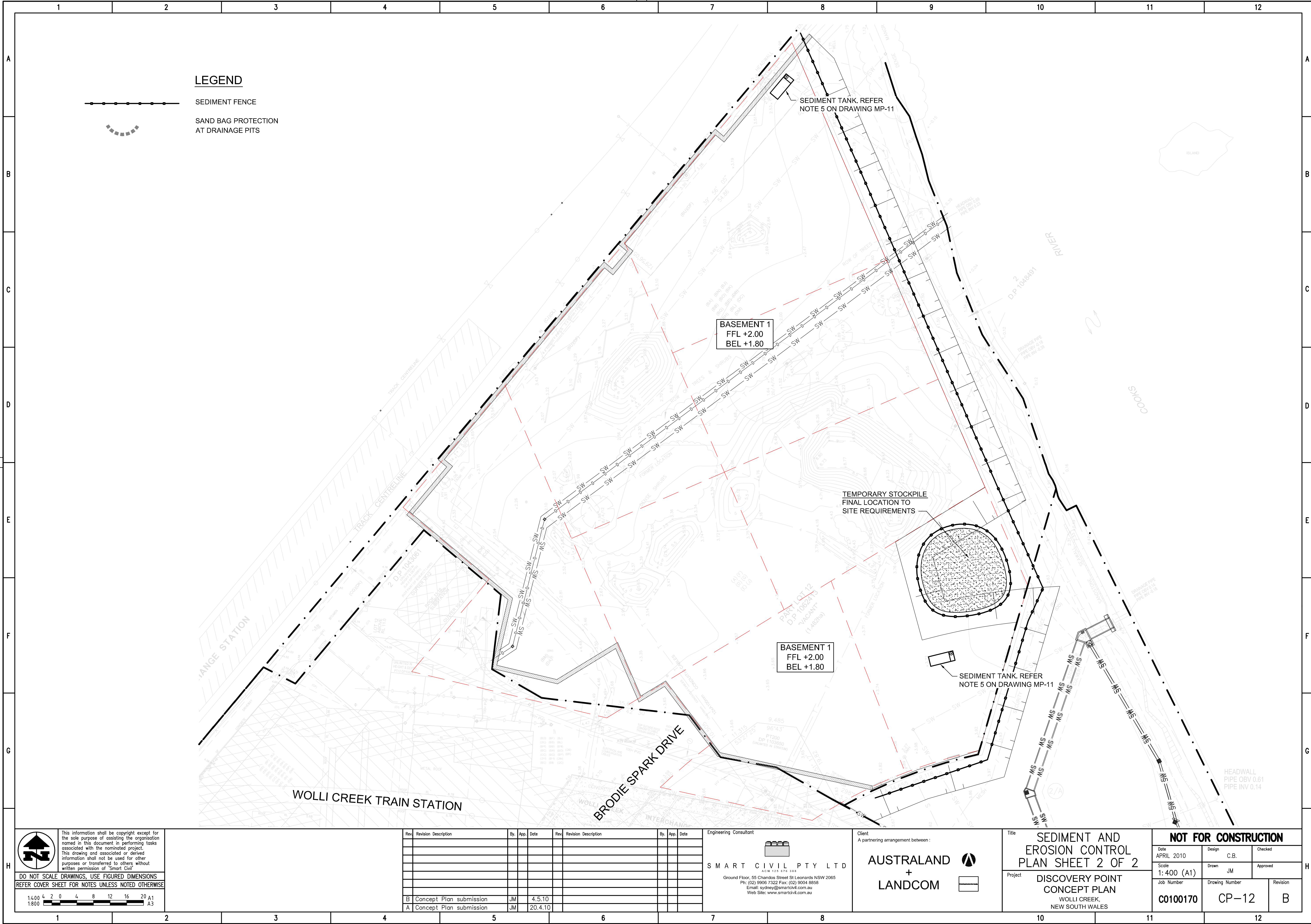
| Rev. | Revision Description | By. | App. | Date | Rev. | Revision Description | By. | App. | Date |
|------|-------------------------|-----|------|---------|------|----------------------|-----|------|------|
| | | | | | | | | | |
| | | | | | | | | | |
| | | | | | | | | | |
| | | | | | | | | | |
| | | | | | | | | | |
| B | Concept Plan submission | JM | | 4.5.10 | | | | | |
| A | Concept Plan submission | JM | | 20.4.10 | | | | | |

Engineering Consultant
SMART CIVIL PTY LTD
ACN 123 676 388
Ground Floor, 55 Chandos Street St Leonards NSW 2065
Ph: (02) 9906 7322 Fax: (02) 9004 8858
Email: sydney@smarcivil.com.au
Web Site: www.smartcivil.com.au

Client
A partnering arrangement between :
AUSTRALAND
+
LANDCOM

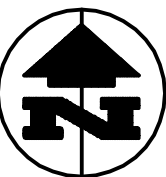
Title
SEDIMENT AND EROSION CONTROL PLAN SHEET 1 OF 2
Project
DISCOVERY POINT CONCEPT PLAN
WOLLI CREEK, NEW SOUTH WALES

| NOT FOR CONSTRUCTION | | | |
|-------------------------------|--------------------------------|----------------------|--|
| Date APRIL 2010 | Design C.B. | Checked | |
| Scale 1:400 (A1) | Drawn JM | Approved | |
| Job Number C0100170 | Drawing Number CP-11 | Revision B | |



LEGEND

- SEDIMENT FENCE
- SAND BAG PROTECTION AT DRAINAGE PITS



This information shall be copyright except for the sole purpose of assisting the organisation named in this document in performing tasks associated with the nominated project. This drawing and associated or derived information shall not be used for other purposes or transferred to others without written permission of "Smart Civil".

DO NOT SCALE DRAWINGS, USE FIGURED DIMENSIONS
REFER COVER SHEET FOR NOTES UNLESS NOTED OTHERWISE

1:400 4 2 0 4 8 12 16 20 A1
1:600 A3

| Rev. | Revision Description | By. | App. | Date | Rev. | Revision Description | By. | App. | Date |
|------|-------------------------|-----|------|---------|------|----------------------|-----|------|------|
| | | | | | | | | | |
| | | | | | | | | | |
| | | | | | | | | | |
| | | | | | | | | | |
| | | | | | | | | | |
| B | Concept Plan submission | JM | | 4.5.10 | | | | | |
| A | Concept Plan submission | JM | | 20.4.10 | | | | | |

Engineering Consultant
SMART CIVIL PTY LTD
ACN 123 676 388
Ground Floor, 65 Chandos Street St Leonards NSW 2065
Ph: (02) 9906 7322 Fax: (02) 9004 8858
Email: sydney@smartsivil.com.au
Web Site: www.smartsivil.com.au

Client
A partnering arrangement between:
AUSTRALAND
+
LANDCOM

Title
**SEDIMENT AND EROSION CONTROL
PLAN SHEET 2 OF 2**
Project
**DISCOVERY POINT
CONCEPT PLAN
WOLLI CREEK,
NEW SOUTH WALES**

| NOT FOR CONSTRUCTION | | | |
|-------------------------------|--------------------------------|----------------------|--|
| Date APRIL 2010 | Design C.B. | Checked | |
| Scale 1:400 (A1) | Drawn JM | Approved | |
| Job Number C0100170 | Drawing Number CP-12 | Revision B | |