











- KEY**
-  Site Boundary
 -  Catchment Boundary
 -  Locality 1
 -  Locality 2
 -  Locality 3
 -  Raingarden
 -  Riparian Corridor
 -  Detention Basin
 -  Ornamental Pond
 -  Culvert

Dwg Name: Water Cycle Management Strategy
Date: 13 Sept 2010





LANDCOM

KEY

- Site Boundary
- 10m APZ
- 15m APZ
- 40m APZ
- 50m APZ

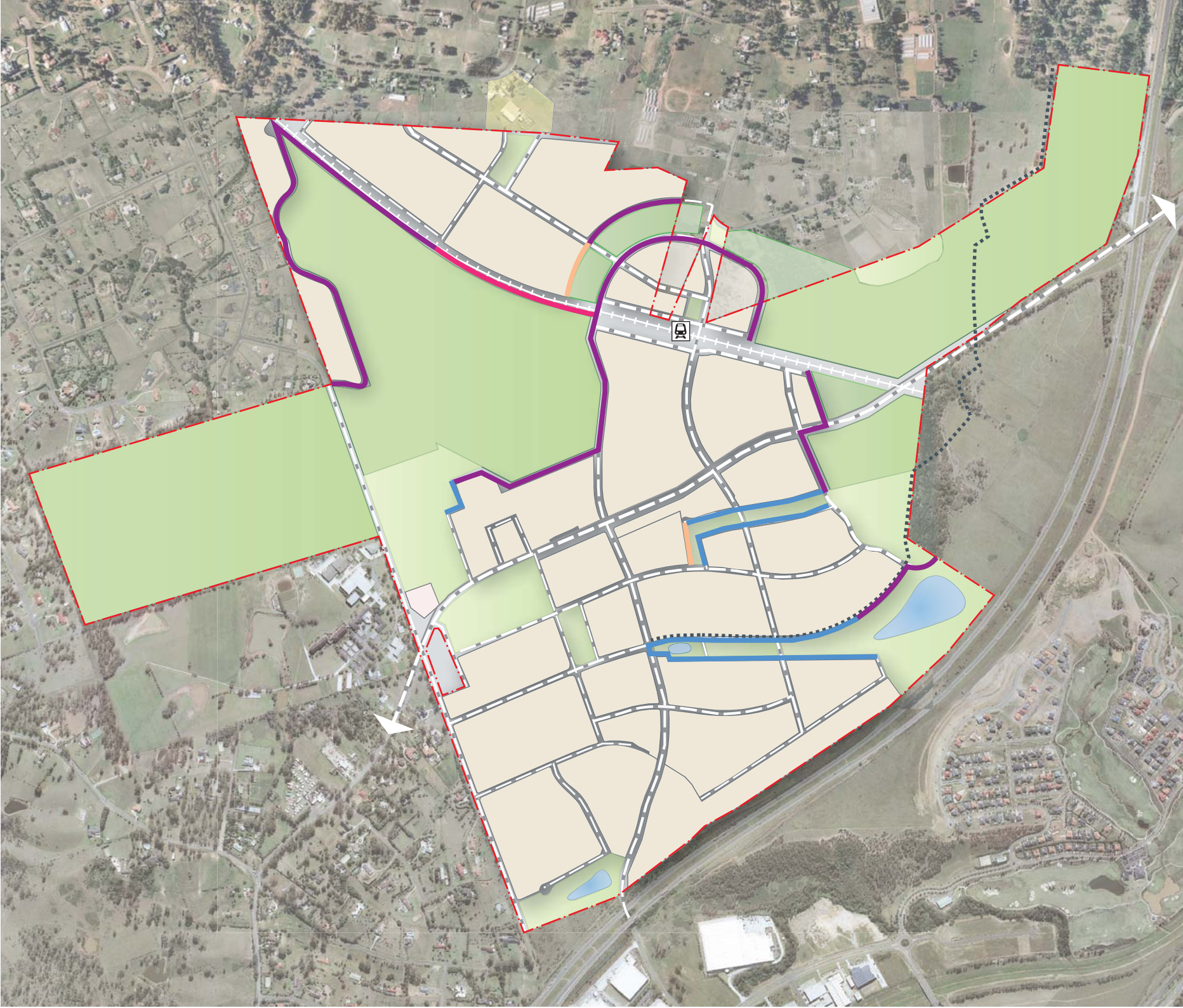
Dwg Name: Bushfire Asset Protection Zones

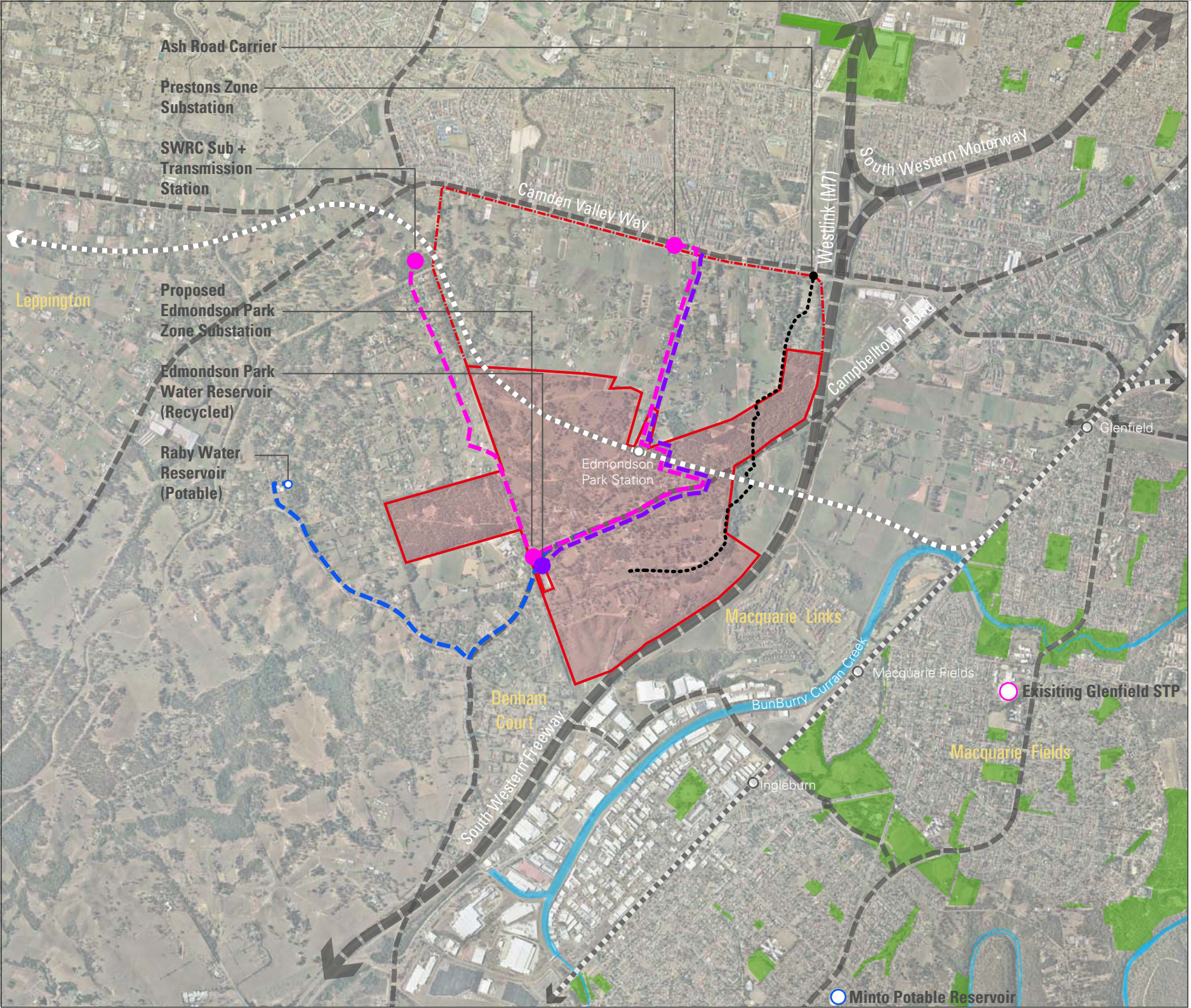
Date: 27 Aug 2010



EPS

Edmondson Park South





KEY

- Site Area
- Edmondson Park Release Area
- Motorways
- Regional Roads
- Existing Rail Corridor
- SWRL Corridor
- Parks
- Water Bodies
- Water (Potable)
- Electricity
- Water Recycled
- Sewer Line

Dwg Name: Utility Services Infrastructure Strategy

Date: 27 Aug 2010





LANDCOM

KEY

--- Site Boundary



Dwg Name: Signage Plan

Date: 27 Aug 2010



EPS

Edmondson Park South