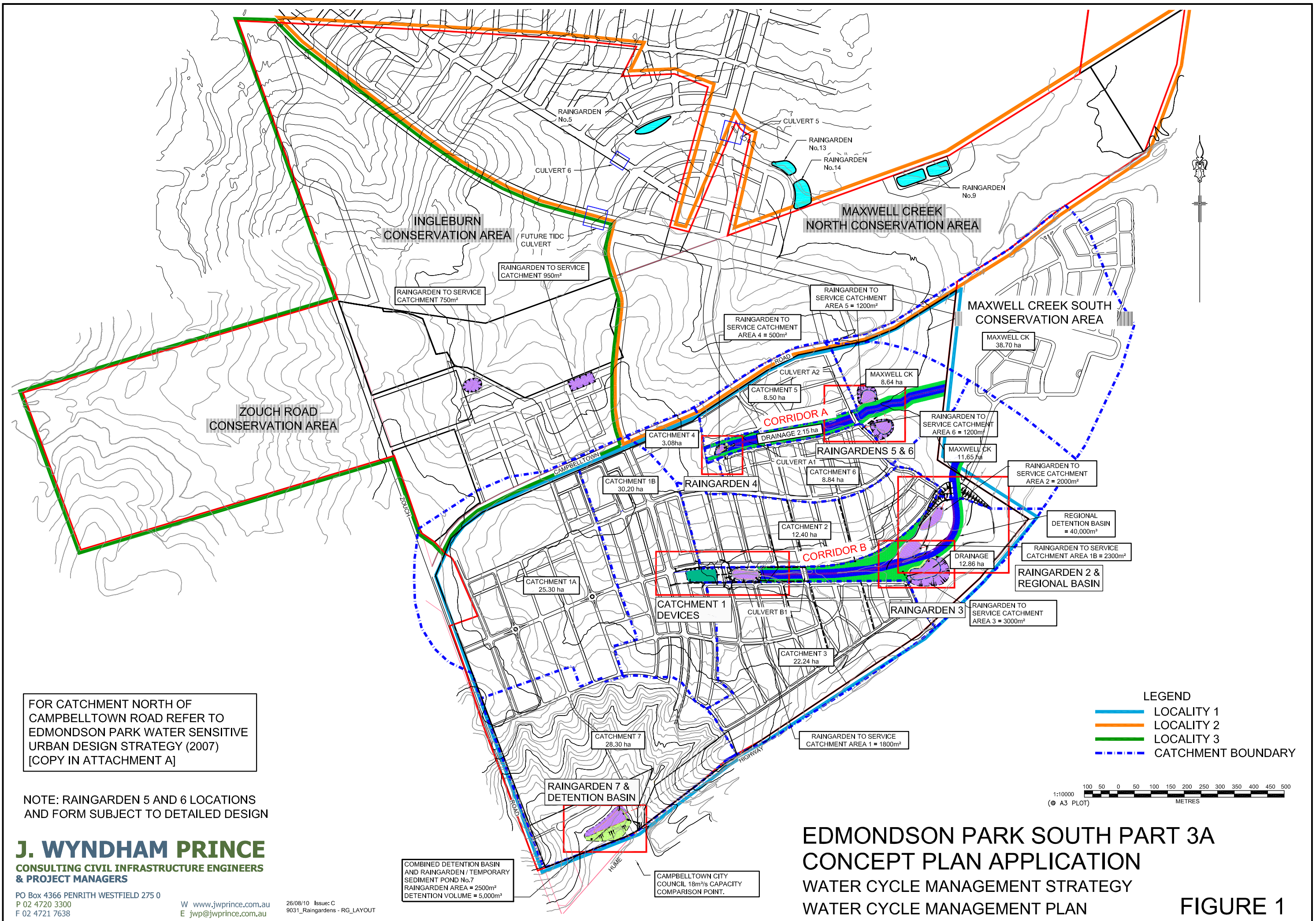


# FIGURES



FOR CATCHMENT NORTH OF CAMPBELLTOWN ROAD REFER TO EDMONDSON PARK WATER SENSITIVE URBAN DESIGN STRATEGY (2007) [COPY IN ATTACHMENT A]

NOTE: RAINGARDEN 5 AND 6 LOCATIONS AND FORM SUBJECT TO DETAILED DESIGN

**J. WYNDHAM PRINCE**  
CONSULTING CIVIL INFRASTRUCTURE ENGINEERS & PROJECT MANAGERS

PO Box 4366 PENRITH WESTFIELD 275 0  
P 02 4720 3300  
F 02 4721 7638

W [www.jwprince.com.au](http://www.jwprince.com.au)  
E [jwp@jwprince.com.au](mailto:jwp@jwprince.com.au)

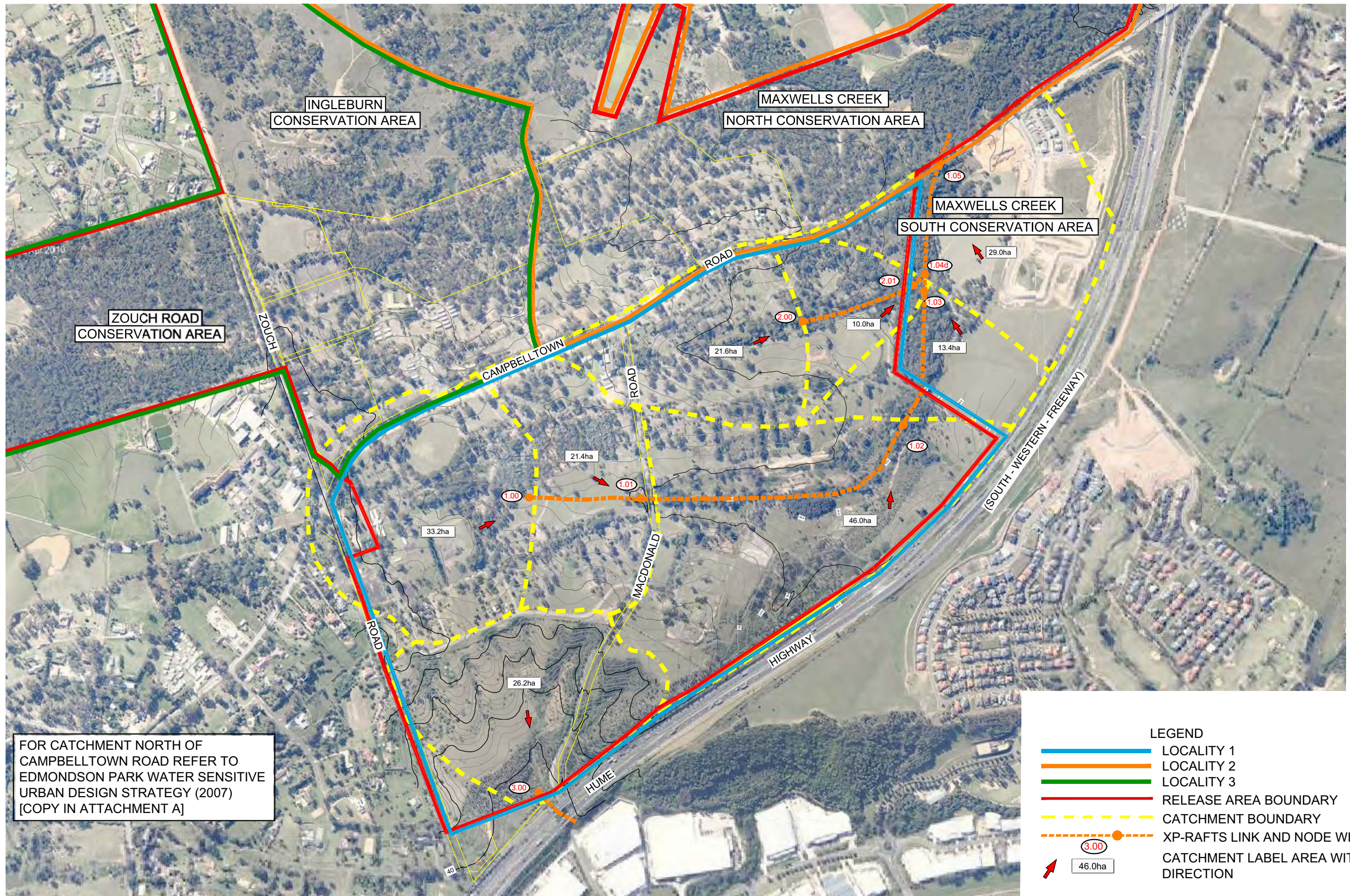
28/08/10 Issue: C  
9031\_Raingardens - RG\_LAYOUT

COMBINED DETENTION BASIN AND RAINGARDEN / TEMPORARY SEDIMENT POND No.7  
RAINGARDEN AREA = 2500m<sup>2</sup>  
DETENTION VOLUME = 5,000m<sup>3</sup>

CAMPBELLTOWN CITY COUNCIL 18m<sup>3</sup>/s CAPACITY COMPARISON POINT.

**EDMONDSON PARK SOUTH PART 3A**  
**CONCEPT PLAN APPLICATION**  
WATER CYCLE MANAGEMENT STRATEGY  
WATER CYCLE MANAGEMENT PLAN

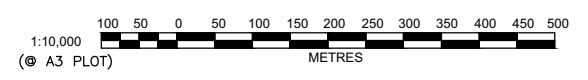
**FIGURE 1**



FOR CATCHMENT NORTH OF CAMPBELLTOWN ROAD REFER TO EDMONDSON PARK WATER SENSITIVE URBAN DESIGN STRATEGY (2007) [COPY IN ATTACHMENT A]

**LEGEND**

- LOCALITY 1
- LOCALITY 2
- LOCALITY 3
- RELEASE AREA BOUNDARY
- CATCHMENT BOUNDARY
- XP-RAFTS LINK AND NODE WITH LABEL
- ↗ CATCHMENT LABEL AREA WITH FLOW DIRECTION



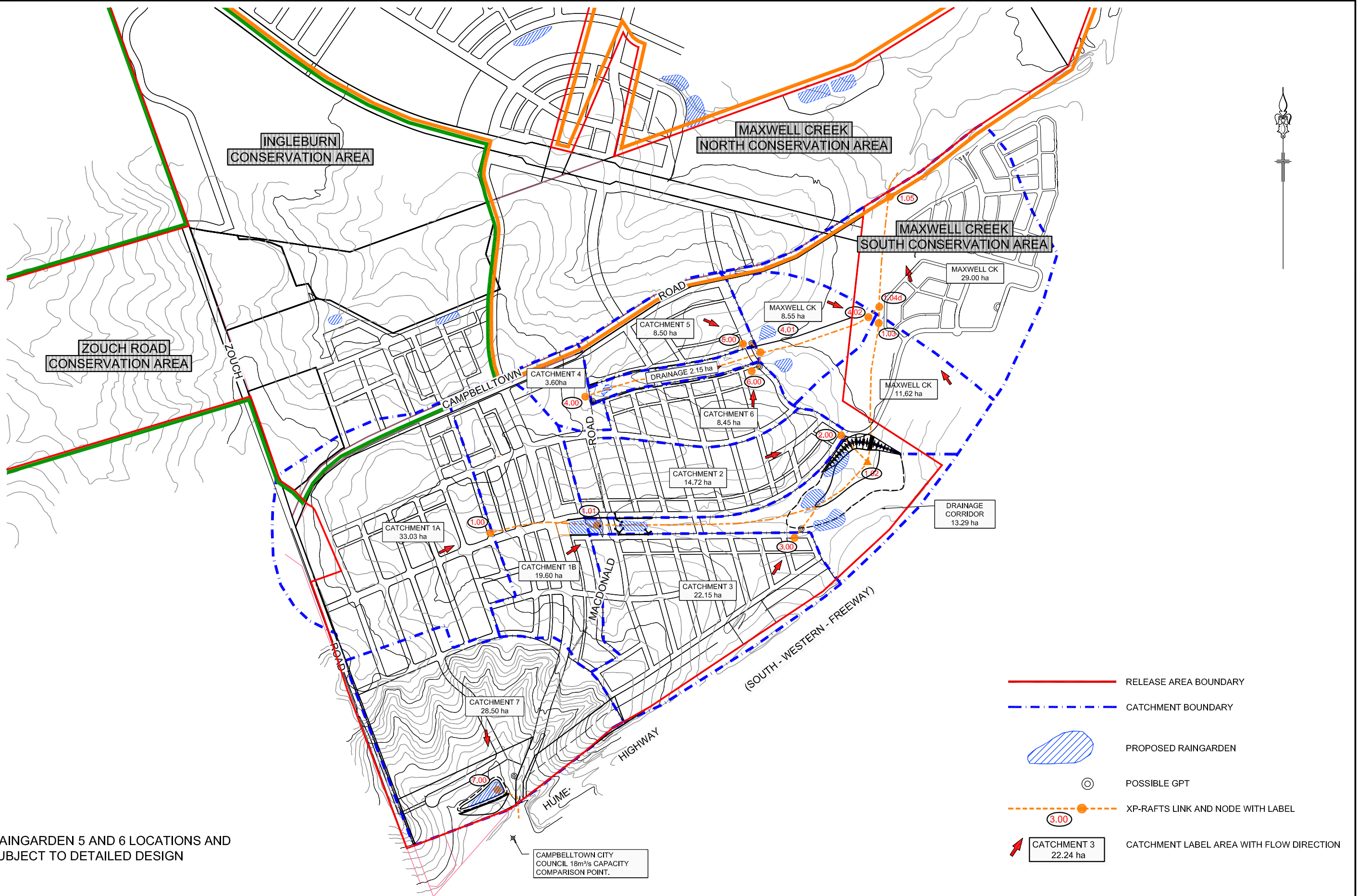
**J. WYNDHAM PRINCE**  
 CONSULTING CIVIL INFRASTRUCTURE ENGINEERS  
 & PROJECT MANAGERS

PO Box 4366 PENRITH WESTFIELD 275 0  
 P 02 4720 3300  
 F 02 4721 7638  
 W www.jwprince.com.au  
 E jwp@jwprince.com.au

16/08/10 Issue: B  
 J:\9031W\Drawings\SW - Figures\9031SW01.dwg

**EDMONDSON PARK SOUTH PART 3A**  
**CONCEPT PLAN APPLICATION**  
 CATCHMENT LAYOUT PLAN  
 PRE-DEVELOPMENT SITE CONDITIONS

**FIGURE 2**



NOTE: RAINGARDEN 5 AND 6 LOCATIONS AND FORM SUBJECT TO DETAILED DESIGN

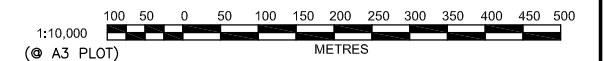
**J. WYNDHAM PRINCE**  
 CONSULTING CIVIL INFRASTRUCTURE ENGINEERS  
 & PROJECT MANAGERS

PO Box 4366 PENRITH WESTFIELD 275 0  
 P 02 4720 3300  
 F 02 4721 7638

W www.jwprince.com.au  
 E jwp@jwprince.com.au

26/08/10 Issue: B  
 J:\9031W\Drawings\SW - Figures\9031SW02 (Interim).dwg  
 SHEET 2 OF 2

**EDMONDSON PARK PART 3A**  
**PROJECT PLAN APPLICATION**  
**CATCHMENT LAYOUT PLAN**  
**POST-DEVELOPMENT SITE CONDITIONS**



**FIGURE 3**