

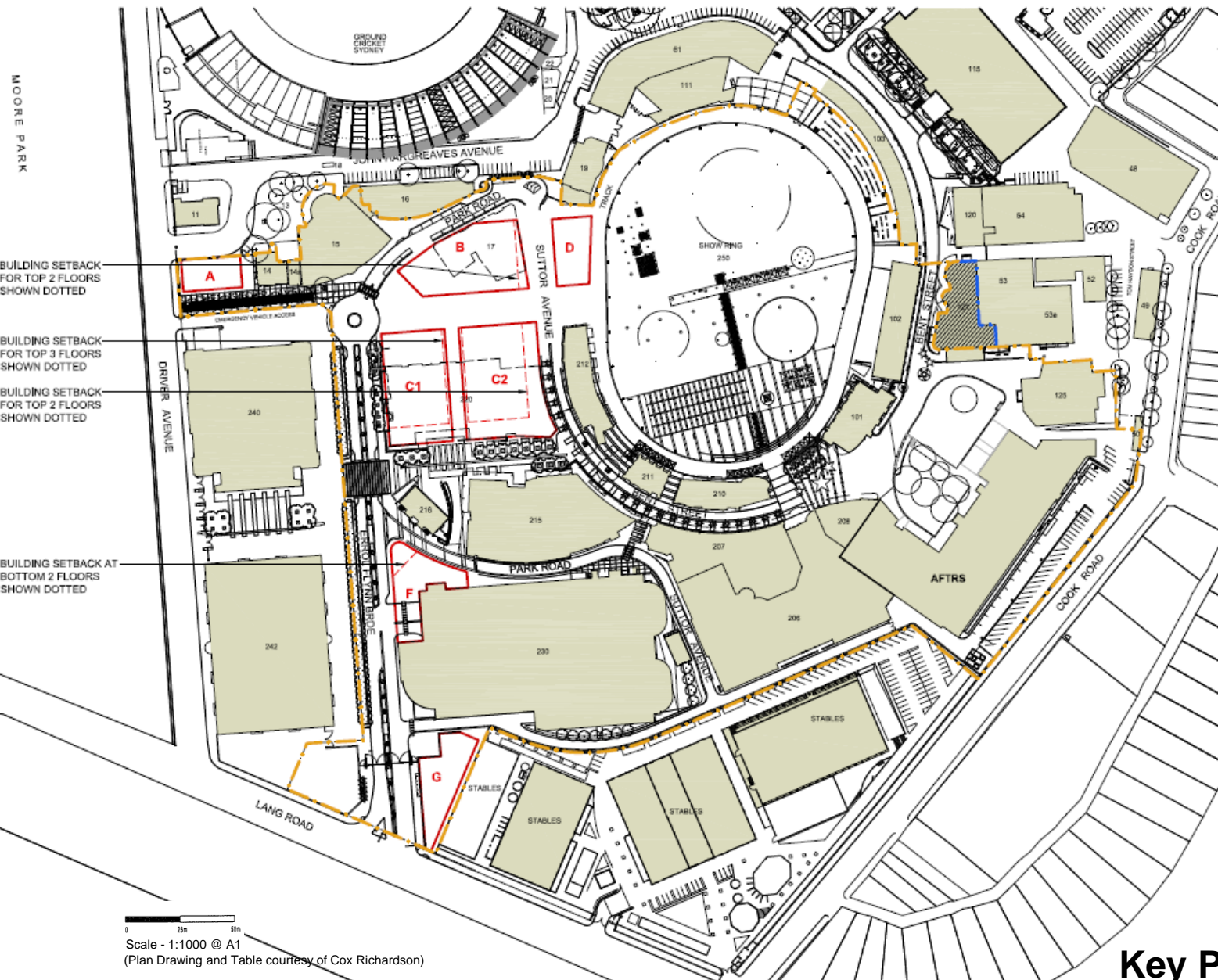
MOORE PARK

BUILDING SETBACK FOR TOP 2 FLOORS SHOWN DOTTED

BUILDING SETBACK FOR TOP 3 FLOORS SHOWN DOTTED

BUILDING SETBACK FOR TOP 2 FLOORS SHOWN DOTTED

BUILDING SETBACK AT BOTTOM 2 FLOORS SHOWN DOTTED



Proposed Development Floor Space Allocation Diagram

A	=	950 m2
B	=	7956 m2
C	=	16660 m2
D	=	1220 m2
F	=	4630 m2
G	=	1900 m2

TOTAL PROPOSED AREA - 33,316m2
TOTAL DEMOLISHED AREA - (7129m2)
(BUILDING 17 & 220)

TOTAL ADDITIONAL FLOOR SPACE AREA - 26,187M2

NB - Floor space allocation for individual sites are indicative only and is limited by the defined building envelope.

BOUNDARY LINE
BUILDING 121 FORMS PART OF EQ AT GROUND LEVEL ONLY

Scale - 1:1000 @ A1
(Plan Drawing and Table courtesy of Cox Richardson)

ENTERTAINMENT QUARTER – Moore Park, Sydney
MAJOR PROJECT MP07_0144 CONCEPT PLAN APPLICATION
KEY PLAN (AREAS)

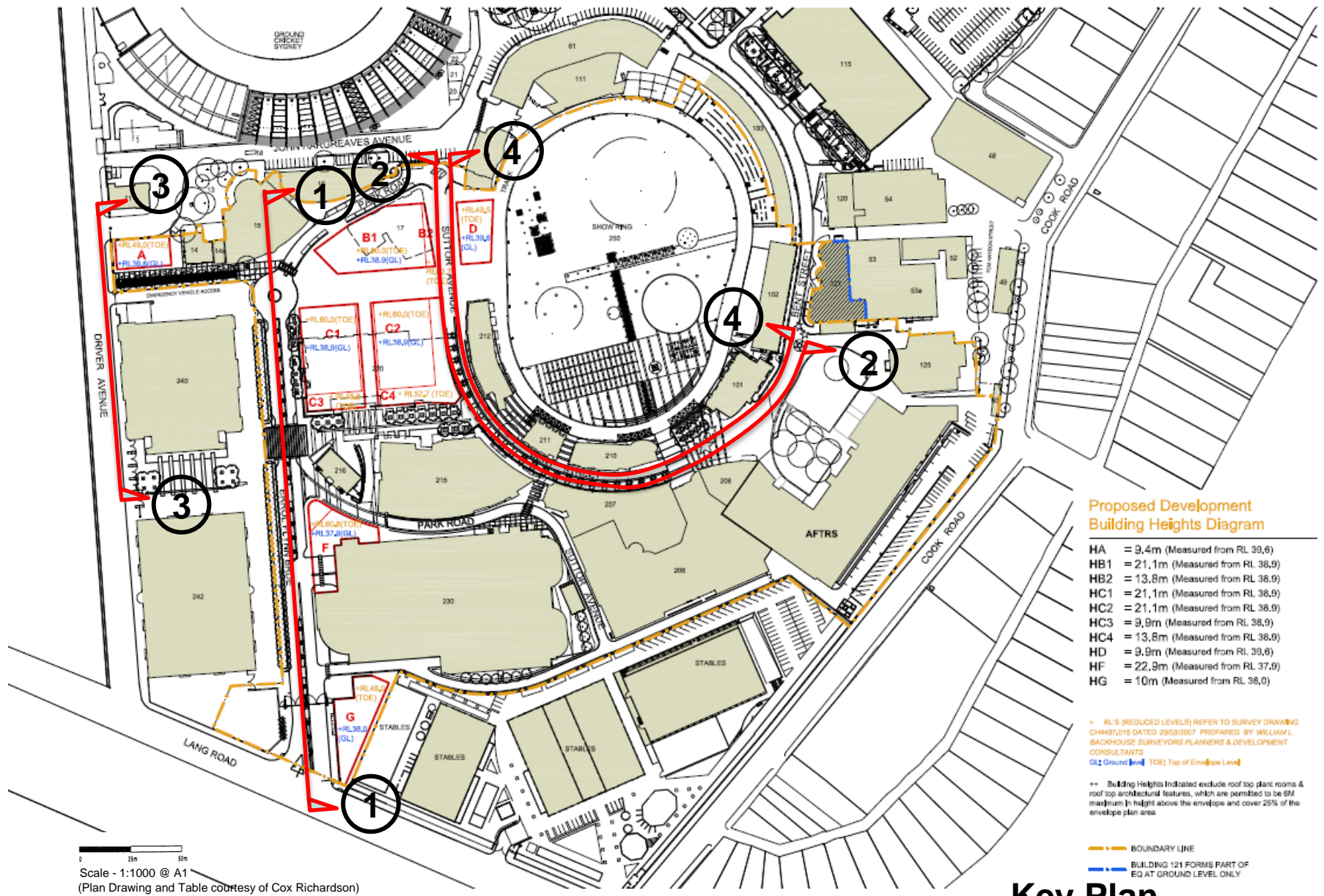


Key Plan

Colonial First State
Property Management

20 SEPT 2010

Drg No CPAR-0905-01



ENTERTAINMENT QUARTER – Moore Park, Sydney
MAJOR PROJECT MP07_0144 CONCEPT PLAN APPLICATION
KEY PLAN (HEIGHTS)

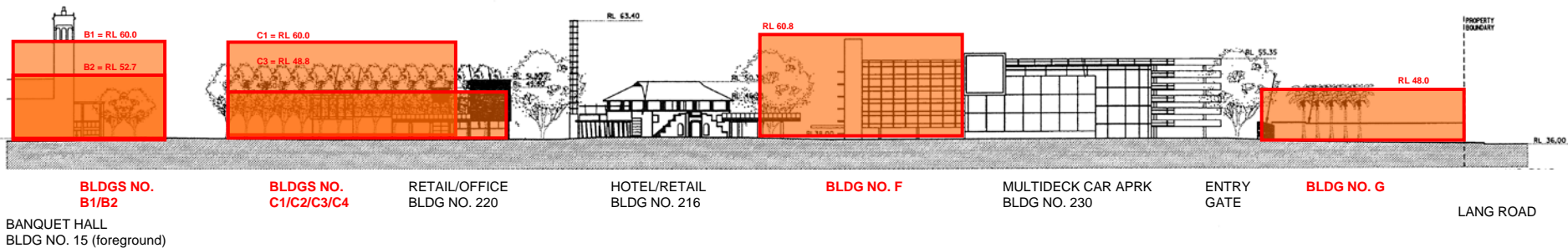


Key Plan

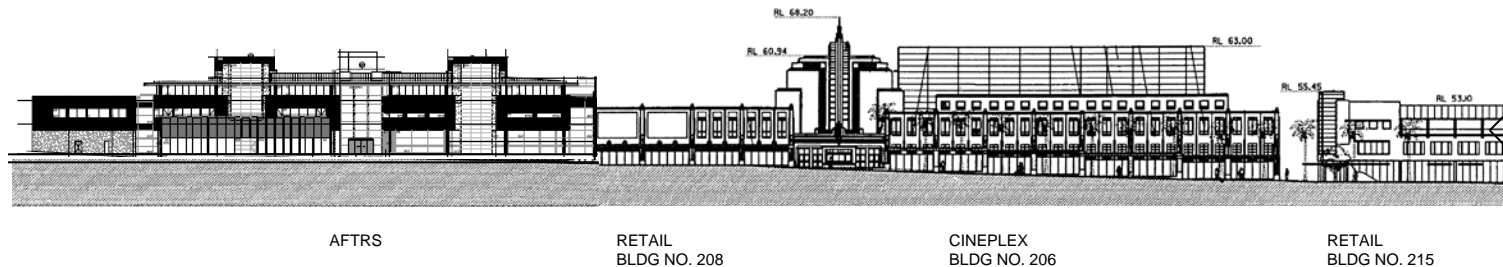
Colonial
First State
 Property Management

20 SEPT 2010

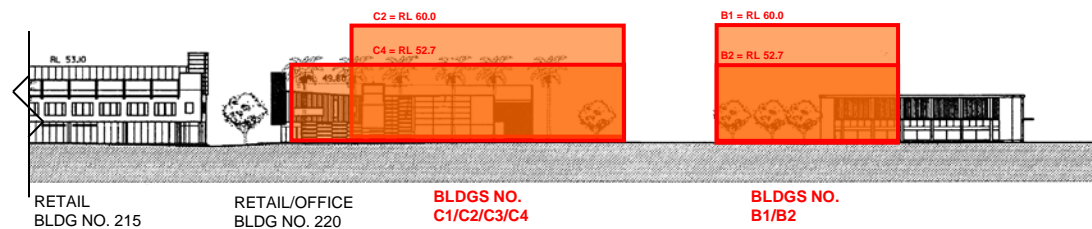
Drg No CPAR-0905-02



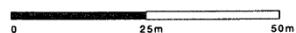
ELEVATION 1



ELEVATION 2



ELEVATION 2 continued



Scale - 1:1000 @ A3
Scale - 1:500 @ A1

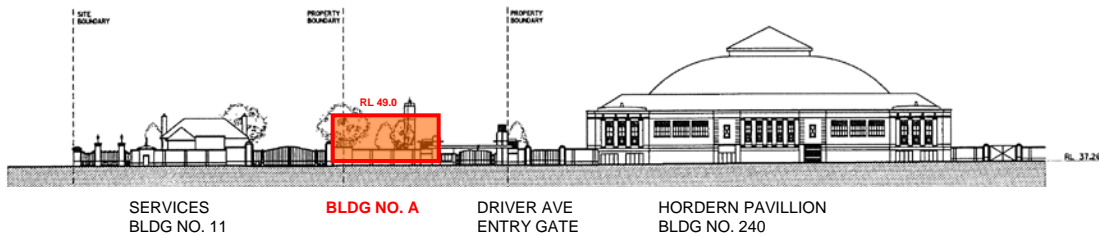
ENTERTAINMENT QUARTER – Moore Park, Sydney
MAJOR PROJECT MP07_0144 CONCEPT PLAN APPLICATION
ELEVATIONS

**Proposed Development
Building Heights Diagram**

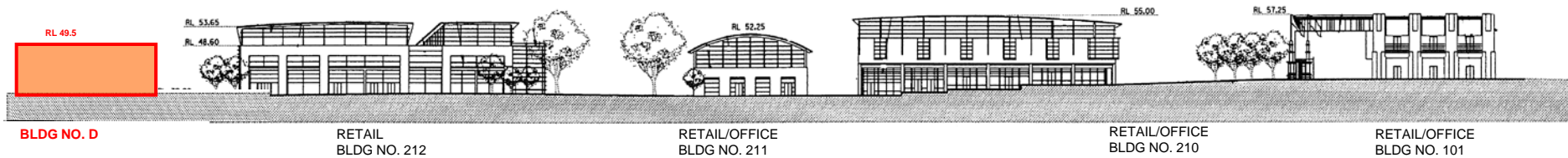
HA	= 9,4m (Measured from RL 39,6)
HB1	= 21,1m (Measured from RL 38,9)
HB2	= 13,8m (Measured from RL 38,9)
HC1	= 21,1m (Measured from RL 38,9)
HC2	= 21,1m (Measured from RL 38,9)
HC3	= 9,9m (Measured from RL 38,9)
HC4	= 13,8m (Measured from RL 38,9)
HD	= 9,9m (Measured from RL 39,6)
HF	= 22,9m (Measured from RL 37,9)
HG	= 10m (Measured from RL 38,0)

RL'S (REDUCED LEVELS) REFER TO SURVEY DRAWING CH4497,015 DATED 29/03/2007 PREPARED BY WILLIAM L. BACKHOUSE SURVEYORS PLANNERS & DEVELOPMENT CONSULTANTS
GL: Ground Level; TDE: Top of Envelope Level

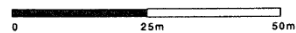
++ Building Heights Indicated exclude roof top plant rooms & roof top architectural features, which are permitted to be 6M maximum in height above the envelope and cover 25% of the envelope plan area



ELEVATION 3



ELEVATION 4



Scale - 1:1000 @ A3
Scale - 1:500 @ A1

ENTERTAINMENT QUARTER – Moore Park, Sydney MAJOR PROJECT MP07_0144 CONCEPT PLAN APPLICATION ELEVATIONS

Proposed Development Building Heights Diagram

HA	= 9,4m (Measured from RL 39,6)
HB1	= 21,1m (Measured from RL 38,9)
HB2	= 13,8m (Measured from RL 38,9)
HC1	= 21,1m (Measured from RL 38,9)
HC2	= 21,1m (Measured from RL 38,9)
HC3	= 9,9m (Measured from RL 38,9)
HC4	= 13,8m (Measured from RL 38,9)
HD	= 9,9m (Measured from RL 39,6)
HF	= 22,9m (Measured from RL 37,0)
HG	= 10m (Measured from RL 38,0)

+= RL'S (REDUCED LEVELS) REFER TO SURVEY DRAWING CH4497,015 DATED 28/03/2007 PREPARED BY WILLIAM L. BACKHOUSE SURVEYORS PLANNERS & DEVELOPMENT CONSULTANTS

GL: Ground Level TDE: Top of Envelope Level

++ Building Heights Indicated exclude roof top plant rooms & roof top architectural features, which are permitted to be 6M maximum in height above the envelope and cover 25% of the envelope plan area