



**LANDSCAPE OPEN SPACE  
CONCEPT PLAN REPORT**

MP08-0234

August 2010

Revision [B]



1.0	Introduction
1.1	Landscape Vision
1.2	Landscape Character
2.0	Landscape Masterplan
3.0	Design Analysis
3.1	Natural Vegetation
3.2	Open Space Categories
3.2.1	Community Open Space
3.2.2	Local Open Space
3.2.3	Private Community Space
3.2.4	Urban Open Space
3.3	Community Facilities
3.4	Pedestrian Circulation
4.0	Landscape Character Zones
4.1	Ridge Top Residential
4.2	Eco Art Village
4.3	Town Centre Village
4.4	Ridge Top Town Residential
4.5	Hillside Town Frame Residential
4.6	Gateway Village
4.7	Hillside Residential
5.0	Landscape Detail
6.0	Plant Species

"This report has been revised to be consistent with the terms of the Rise Concept Plan Approval No. 08\_0234 issued by the Minister for Planning on 29 June 2010. Precinct J and the fire trail to this precinct have been deleted. This revised assessment report forms part of the consolidated concept plan required by Condition A3 of the approval".

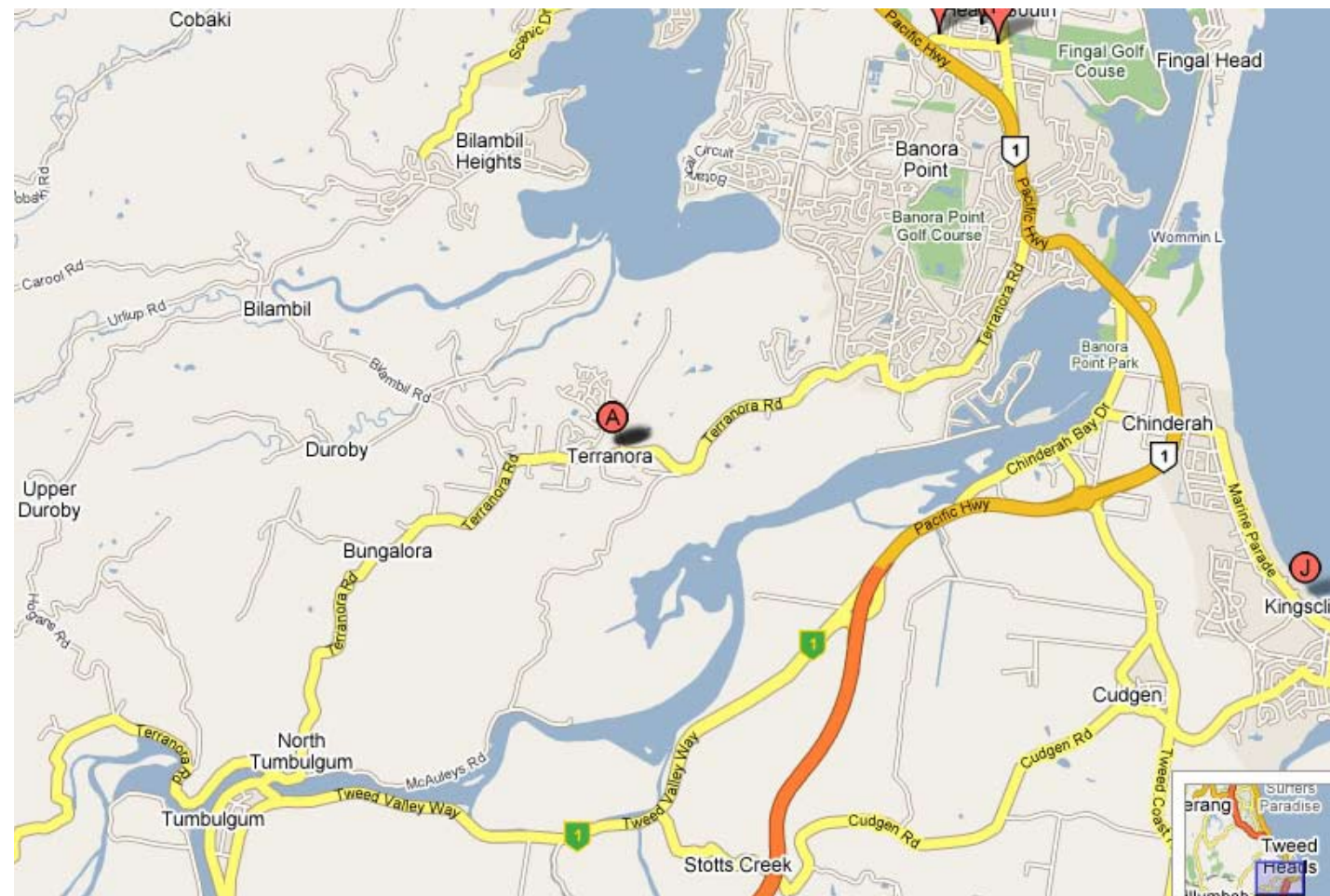
# 1.0 Introduction

‘RISE’ is a new master planned community proposed for a large parcel of land in the hinterlands of Tweed shire council. The site’s high elevation provides the site with 360 degree views with site line as far north as Stradbroke Island and south to Byron Bay.

Each road and street within ‘RISE’ is designed to function beyond the safe movement of motor vehicles to become linear corridors of open space and parks. The native endemic planting to be carried deep into the development and help to reinforce the overall feel and character of ‘RISE’. These design principles and design approach, that carefully integrates & coordinates the engineering and landscape design of the roads & streets, ensure ‘RISE’ is not only safe for vehicles but safe and functional for pedestrians and promotes clear legibility & way finding with a linear open space.

The following report outlines the proposed landscape open space master plan for the proposed ‘RISE’ development. This report is to be read in reference to the Bilambil Heights Urban Release Area principals as set down by Tweed Shire Council and is to form part of the suite of concept master plan reports for the state significant application to the New South Wales State Government.

The report also outlines the design intent and direction for the detailed design of all landscape elements within the development, and should be used as a guide in developing detailed works.





# 1.1 Landscape Vision

The overall theme of the development will draw upon the sites unique location on the hinterland of the tweed coast, surrounded by magnificent views, naturally vegetated hill side, and rural farmlands. Retention of all significant native vegetation where possible further reinforces the character of nature.

- Celebrate the natural hinterland forest vegetation of northern N.S.W.
- Provide a high quality landscape and open space system with attention to detail and use of quality materials.
- Reinforce the rural characteristics of the region through a modern high quality design aesthetic.





# 1.2 Landscape Character

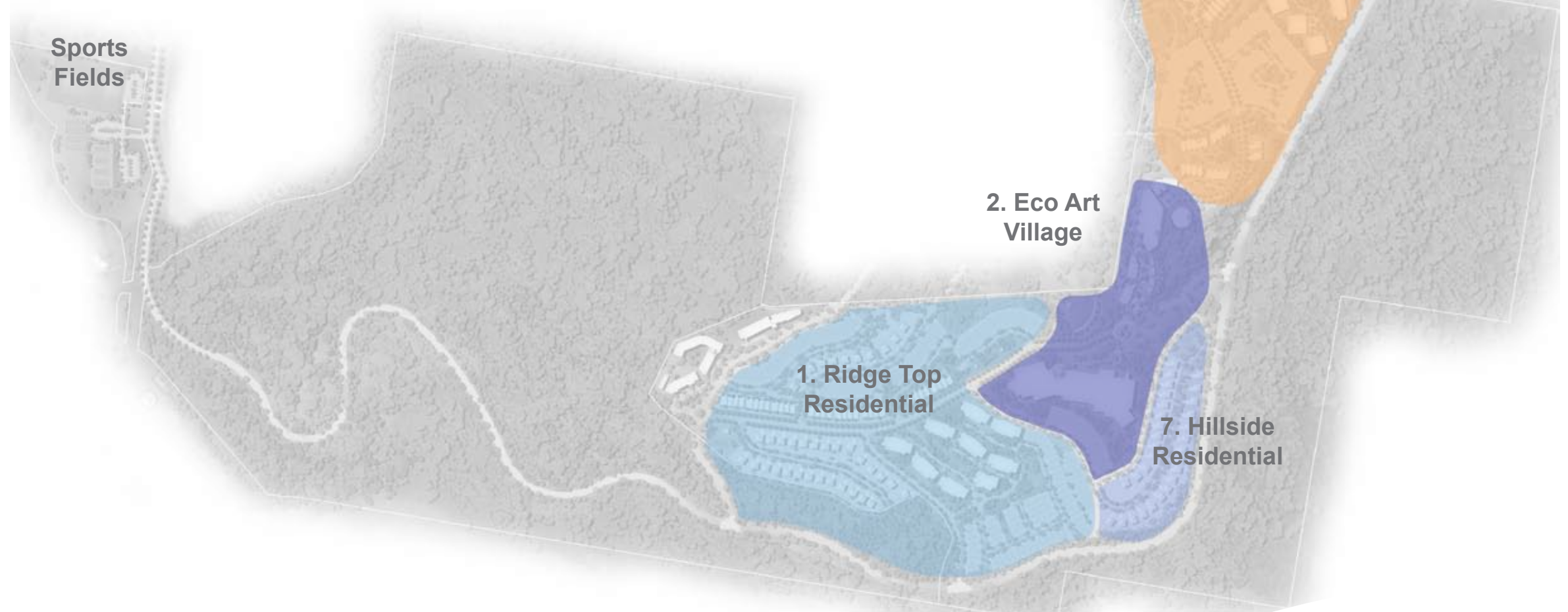
## Character Plan

‘Rise’ - As its name suggests can be characterised by its location. One elevated at the peak of the Tweed hinterland. However the undulating surrounding hills of remnant wet forest and grazing farmland suggests an equally strong characteristic that should be recognised through the urban and landscape design of the development.

‘Rise’ must also represent a development of the highest quality; therefore the character must suggest refinement, attention to detail, quality materials, contemporary, yet with a rustic quality.

The opportunity exists to reinforce these themes through accentuating the natural & rustic elements and combining them with refined finishes & high quality materials. This will establish a design signature unique to rise, drawing upon its natural and cultural context and high level of quality.

However, due to the large size of ‘Rise’ it is necessary to divide the mater plan into a series of smaller character zones, each respecting the overall character, but more specifically acknowledging its immediate site and planning characteristics. This allows for greater personalisation and place making for residents and their visitors.







# 2.0 Landscape Masterplan

Landscape Open Space Concept Plan Report





# 2.0 Landscape Masterplan

## 1 Ridgetop Entry Drive

- structural forest landscape
- manicured landscape to road edge
- landscape rhythm elements
- landscape structure

## 2 Community Events Lawn

- lawn terrace amphitheater
- small stage area
- vegetated parklands, terraced down slope

## 3 Town Gully

- existing dam
- walkable edge around dam
- picnic shelter

## 4 Hillside Gully Park

- existing dam
- pathway on edge of hill
- viewing platforms

## 5 Urban Town Plaza

The landscape mater plan is made up of a combination of all private, semi private and public external areas. While the proposed landscape design principles can not dictate what is undertaken in private external spaces the design of all public and semi-private spaces can have a huge influence. Therefore, this landscape master plan is concerned with all levels of open space and streetscapes. The primary objectives of the landscape master plan are:

- To create an urban fabric that promotes safe pedestrian, cycle and buggy movement designed around the principles of 'streets as linear parks'.
- To create a clear hierarchy of streets and open space to maximise legibility and sense of place, and accommodates a fully connected network of pedestrian, cycle and buggy paths.
- Embrace the principle of 'water sensitive urban design', best practice.
- To establish a sense of identity and strong visual character complimentary to the site's location and surrounds within the hinterlands of the Tweed shire.
- To promote opportunities for appropriate social contact activities, ranging from passive to active recreational pursuits.
- To provide security and safety for all pedestrians, cyclists and motorists within 'Rise' through the appropriate landscape design of open space and streetscapes.
- To conserve and enhance bio diversity through the conservation, rehabilitation, revegetation and management of hectares of the site as protected vegetation zones.
- To respect and manage bush fire risk through the appropriate planting within the nominated asset protection zones (APZ).







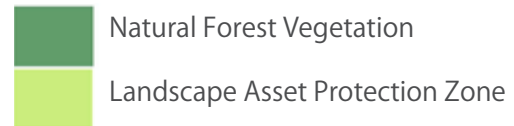
# 3.0 Design Analysis

Landscape Open Space Concept Plan Report





## 3.1 Natural Vegetation





## 3.2 Open Space Categories

- Private Community Space
- Urban Open Space
- Local Open Space
- Community Open Space

The open space within the development is for the recreational enjoyment of residents and their visitors and will provide a variety of passive and active recreation opportunities. The open space system has considered the safe and comfortable movement of pedestrians and cyclists throughout the whole development, therefore designing streets as linear parks. The total open space network is well integrated into the urban layout, allowing sufficient access for all residents to major community facilities and open space

**Cross Reference:** ML Design Drawing; A-MP-01-30(B)  
Titled Site Plan - Local Parks Key Plan

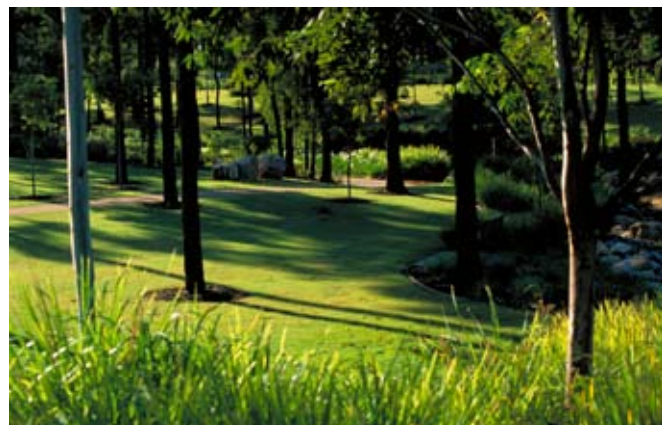




# 3.2.1 Community Open Space



Community Open Space



Sports Fields  
-tennis  
-basketball/netball  
-BMX  
-scateboard park



Ridge Top Entry Drive  
-structural forest landscape  
-manicured landscape to road edge  
-landscape rhythm elements

Hillside gully park  
-existing dam  
-pathway on edge of hill  
-viewing platforms

Community Common Park  
-shelter  
-start of heritage walk  
-picnic facilities

Community Events Lawn  
-lawn terrace amphitheater  
-small stage area  
-vegetated parklands terraced down slope

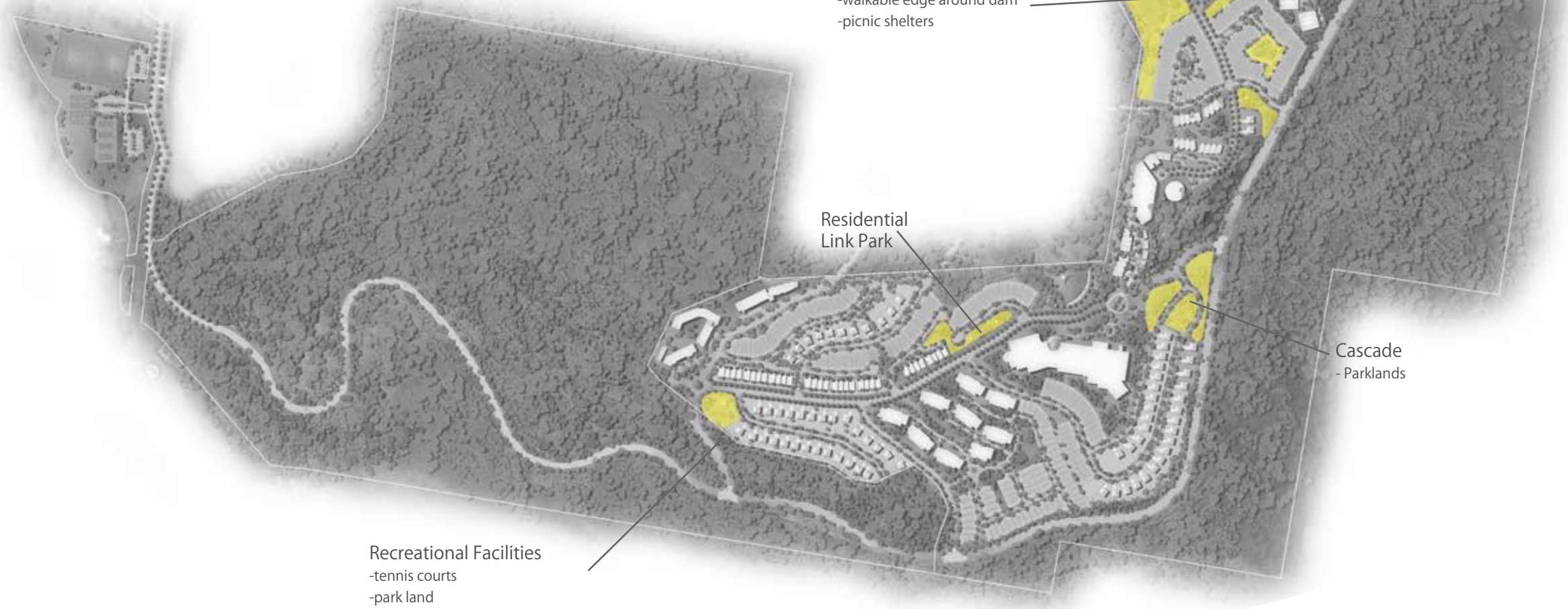


NTS



# 3.2.2 Local Public Open Space

Local Open Space





# 3.2.3 Private Open Space

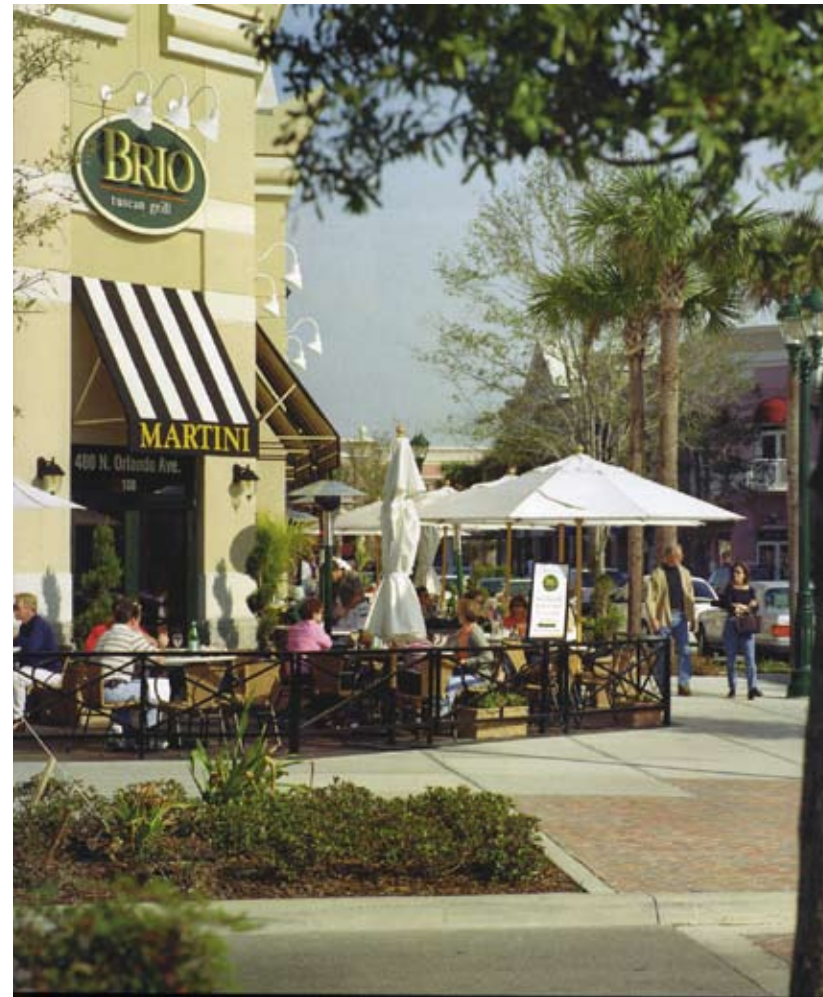
Private Community Space





# 3.2.4 Urban Open Space

Urban Open Space





## 3.3 Community Facilities






- 1 Community Sports Fields
- 2 Existing Dams
- 3 Ridge Top Look Out to Mt. Warning
- 4 Community Events Amphitheater
- 5 Community Hall & Recreation Facilities
- 6 Town Centre Plaza
- 7 Art Street





## 3.4 Pedestrian Circulation

Strongly related to the hierarchy of entries and gateways, special road pavement treatments have been proposed. Together with other possible landscape elements designed at the various gateways, the road pavement change is a major contributor to the sense of entry and arrival. Materials selected (concrete or stone) for use in roadways must be durable and of a size and shape that is resilient to movement and cracking.

-  Shared Pedestrian/ Buggy Path
-  Primary Pedestrian Circulation
-  Buggy Underpass







# 4.0 Landscape Precincts

Landscape Open Space Concept Plan Report





# 4.1 Ridge Top Residential

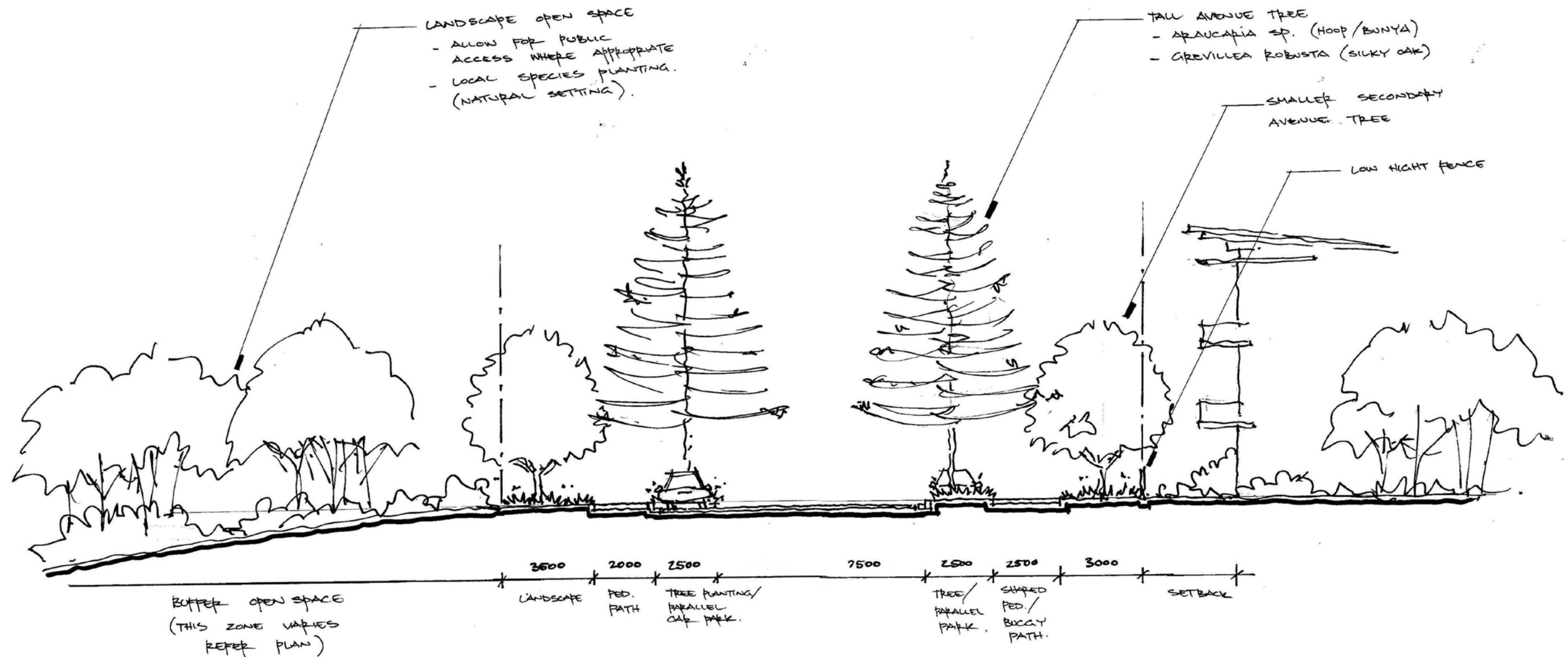


- 1 **Public Spine Road**  
> Informal Arrangement of Street Trees
- 2 **Minor Entry Gateway**  
> Feature Road Pavement  
> Feature Planting  
> Signature Walls/ Markers
- 3 **Entry to Semi-Private Residential Community**
- 4 **Skyline Drive**  
> Strong Tree Lines Avenue  
> Possible Hoop Pines
- 5 **Residential Street (Refer Streetscape master Plan)**
- 6 **Multi-unit Apartments**
- 7 **Future Public Road Connection**  
> Refer Streetscape Master Plan





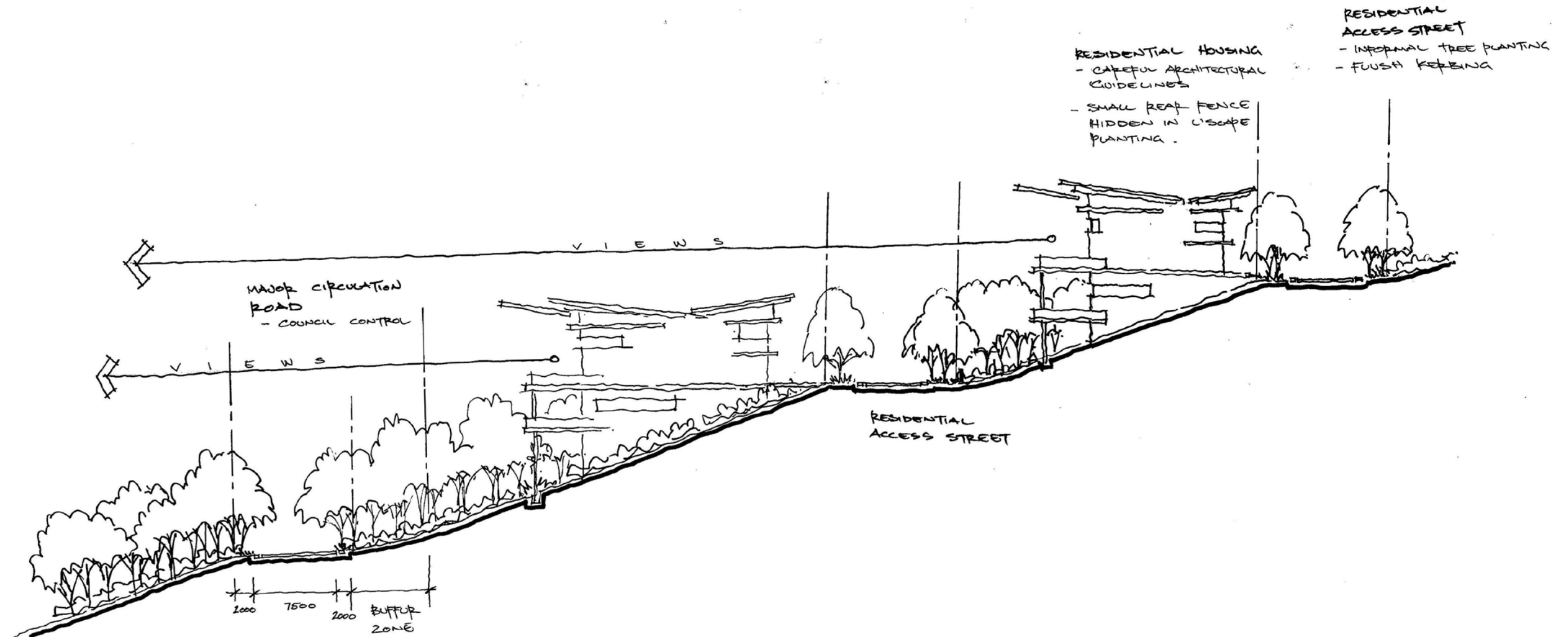
# 4.1 Ridge Top Residential



Ridge Top Residential  
Skyline Drive Section



# 4.1 Ridge Top Residential



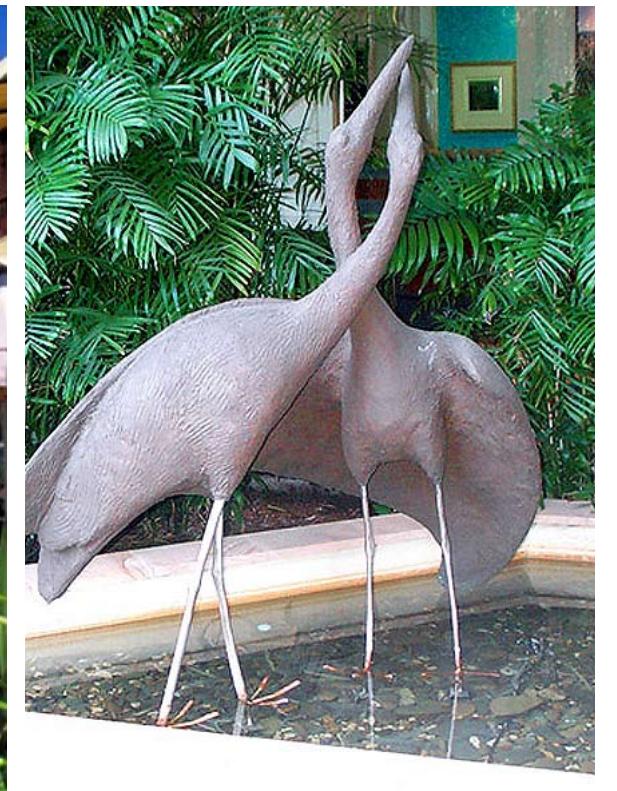
Hillside Residential Housing



## 4.2 Eco Art Village



- 1 **Public Open Space**  
> Informal Street Tree Arrangement
- 2 **Minor Entry Gateway**  
> Feature Road Pavement  
> Feature Planting  
> Signature Walls/ Markers
- 3 **Skyline Drive Roundabout**  
> Signature Planting & Paving
- 4 **Events Amphitheater**  
> Terraces moulded into hillside
- 5 **Skyline Drive**  
> Strong Tree Lined Avenue  
> Possible hoop Pines
- 6 **Eco Art Village Street**  
> Paved Roadway  
> Pedestrian Orientated
- 7 **Rear Access**  
> Primary Vehicle Movement
- 8 **Vehicle Entry To Apartments**
- 9 **Share Pedestrian Buggy Path**
- 10 **Existing Protected Vegetation**





## 4.2 Eco Art Village

- |   |  |    |                                    |
|---|--|----|------------------------------------|
| 1 | Entry Artwork  | 9  | outdoor dining street space        |
| 2 | Roundabout Art Space   | 10 | pedestrianised vehicle slow way    |
| 3 | Outdoor dining & Art Exhibition Terraces                               | 11 | woodland buffer on lower slope     |
| 4 | Discreet parallel Carpark's  | 12 | outdoor entertainment amphitheatre |
| 5 | Contrast Exposed aggregate paving-<br>pedestrianised street & slow way | 13 | Hilltop Plaza public terrace       |
| 6 | Viewing Terrace  |    |                                    |
| 7 | Bollards to vehicle carriageway  |    |                                    |
| 8 | shrub planting to vehicle carriageway                                  |    |                                    |





## 4.2 Eco Art Village

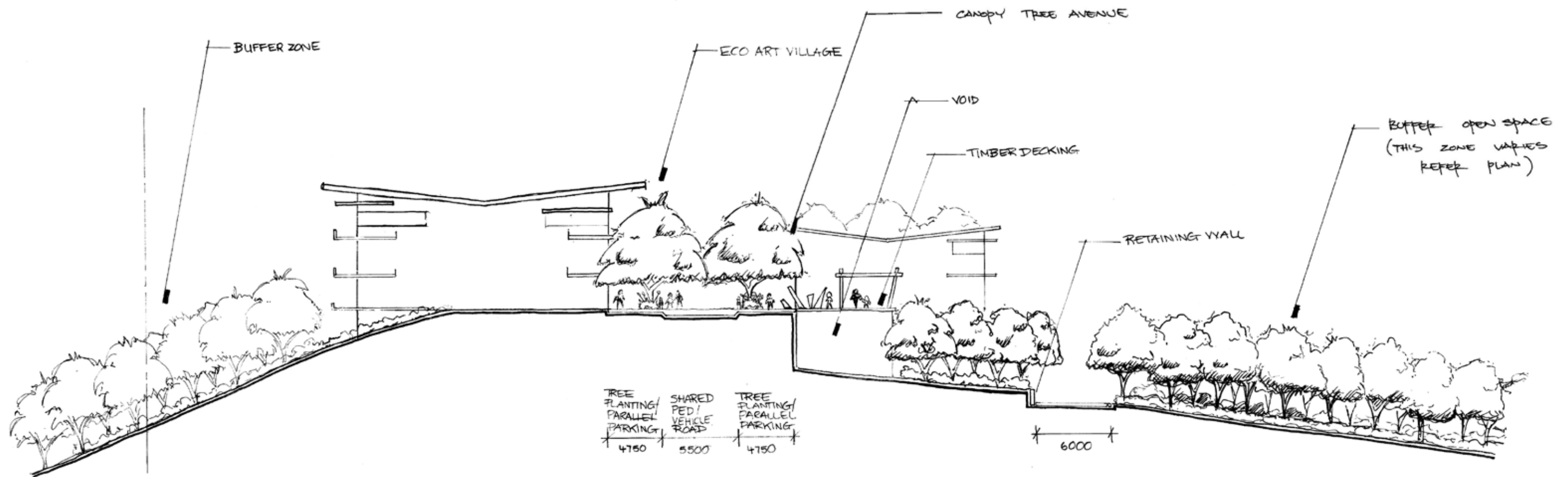


- 1 Pedestrian contrast stone exposed aggregate pavements
- 2 bollards defining vehicle access
- 3 discreet parallel car park bays - textured finish
- 4 pergola over paved deck
- 5 outdoor dining art exhibition spaces
- 6 street art opportunity
- 7 contemporary angular paving lines - echo rainforest character
- 8 vehicular slow-way





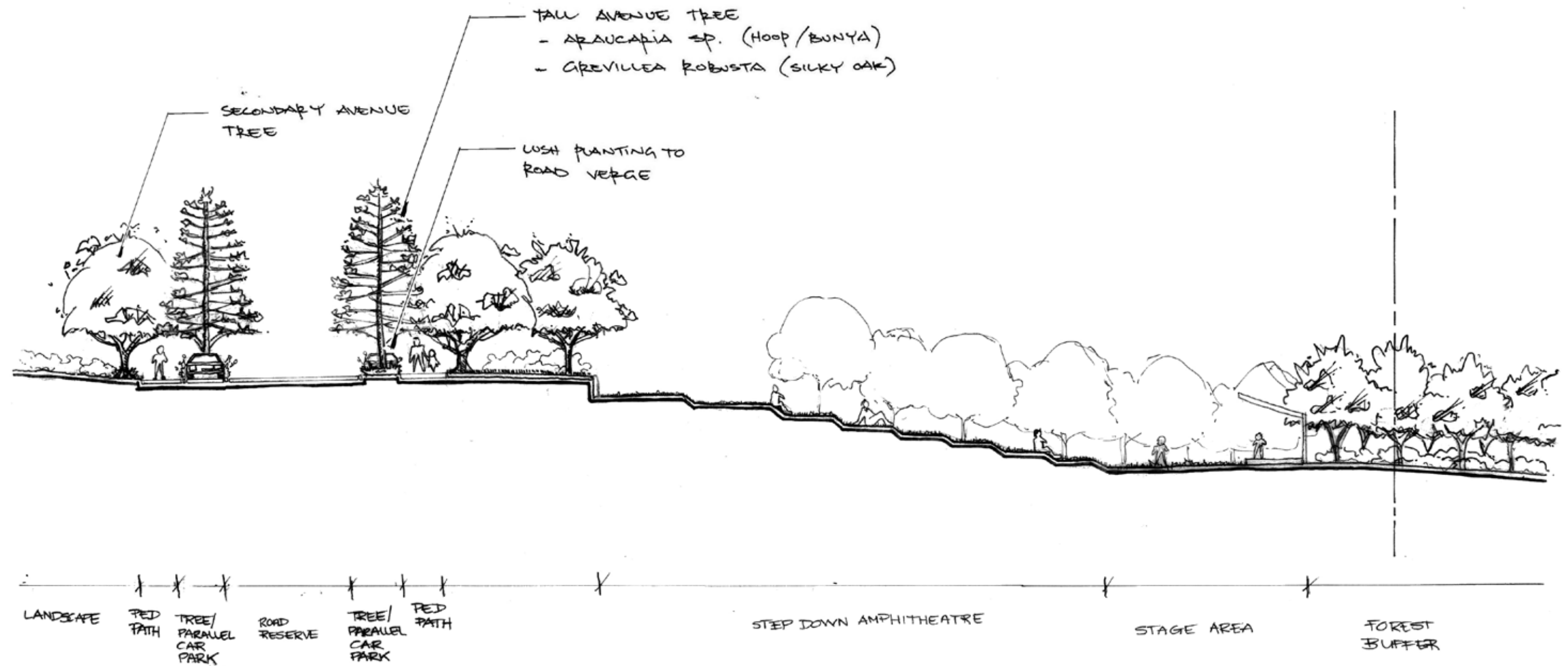
## 4.2 Eco Art Village



Eco Art Village  
Tourism Art Street Section



## 4.2 Eco Art Village



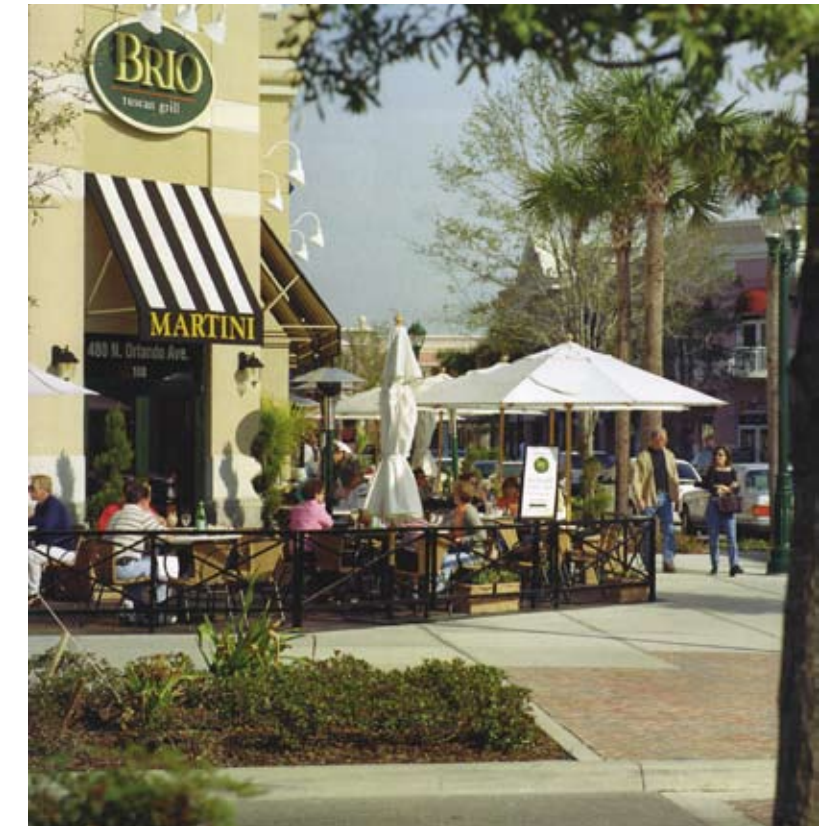
Eco Art Village  
Community Events Lawn & Amphitheater Section



# 4.3 Town Centre Village



- 1 **Public Spine Road**  
  - > Informal Street Tree Arrangement
- 2 **Minor Entry Gateway**  
  - > Feature Road Pavement
  - > Feature Planting
  - > Signature Walls/ Markers
- 3 **Major Entry Roundabout**  
  - > Signature Paving & Planting
  - > Feature Walls/ Markers
- 4 **Minor Entry Road**  
  - > Avenue Tree Planting
- 5 **Town Centre Circulation Road**  
  - > Signature Avenue Trees
- 6 **Town Centre Plaza**  
  - > Paved Vehicle Street
  - > Wide Paved Verge
- 7 **Paved On-Street Car parking Plaza**
- 8 **Feature Terraces, Stair Access & Water Elements**
- 9 **Resort Hotel Apartments**
- 10 **Local Community Common Park**
- 11 **Community Facilities**  
  - > Tennis Courts
  - > Community Hall
  - > Possible Swimming Pool
- 12 **Local Shopping Village**
- 13 **Paved Car Park Plaza**
- 14 **Proposed School**





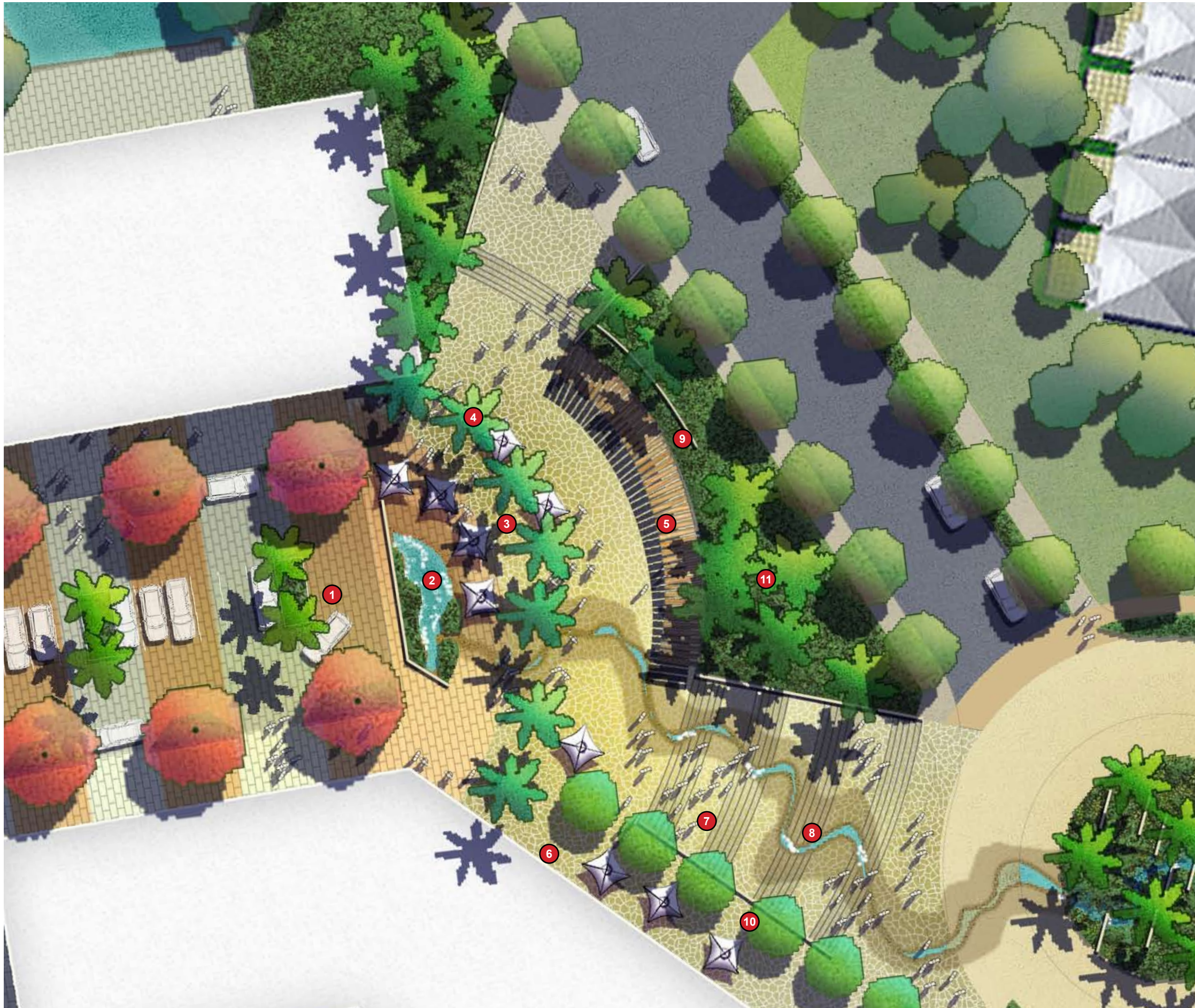
## 4.3 Town Centre Village

- 1 Entry Water Feature and Wall
- 2 Outdoor dining terrace
- 3 Sculpture
- 4 Feature Fig Tree
- 5 Urban Pergolas & Terrace
- 6 Pedestrianised Carpark
- 7 Outdoor dining/Cafe Terrace
- 8 Special Stair with Water Feature
- 9 Water Feature and Feature Planting
- 10 Contrast Patterned Paving
- 11 Accent Entry Planting
- 12 Pergola & Terrace





## 4.3 Town Centre Village

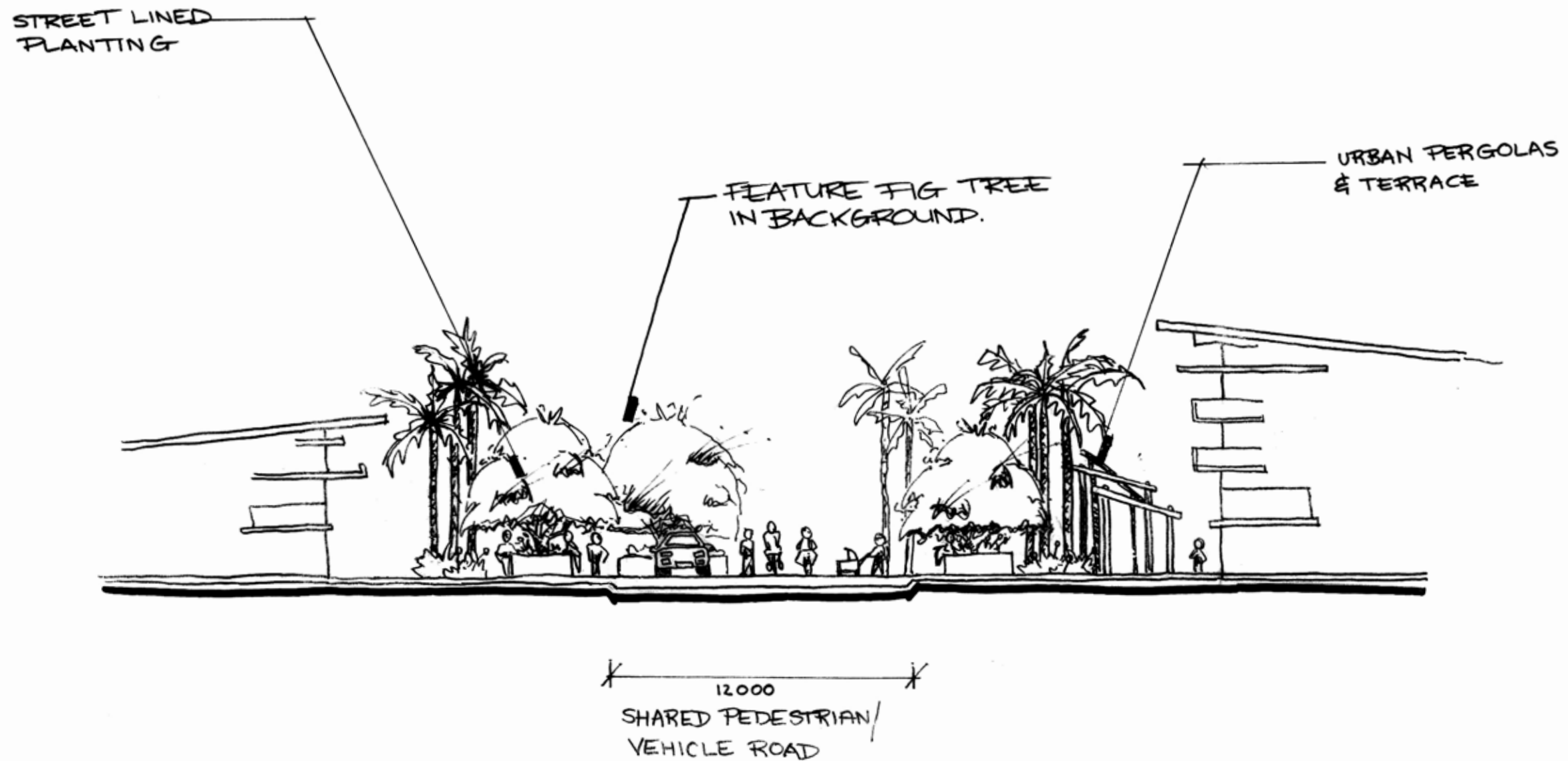


- 1 pedestrian paved car park - contrasting exposed aggregate
- 2 terraced water feature
- 3 outdoor dining terrace & special market activity plaza
- 4 architectural date palm colonnade
- 5 pergola & viewing terrace with seats
- 6 restaurant spill out dining terrace
- 7 stone paved terraces & stair
- 8 sculptural water feature
- 9 stone pitched retaining walls
- 10 native canopy trees
- 11 palm grove with shrub understories





## 4.3 Town Centre Village



Town Centre Village  
Urban Town Plaza Section



# 4.4 Ridge Top Town Residential

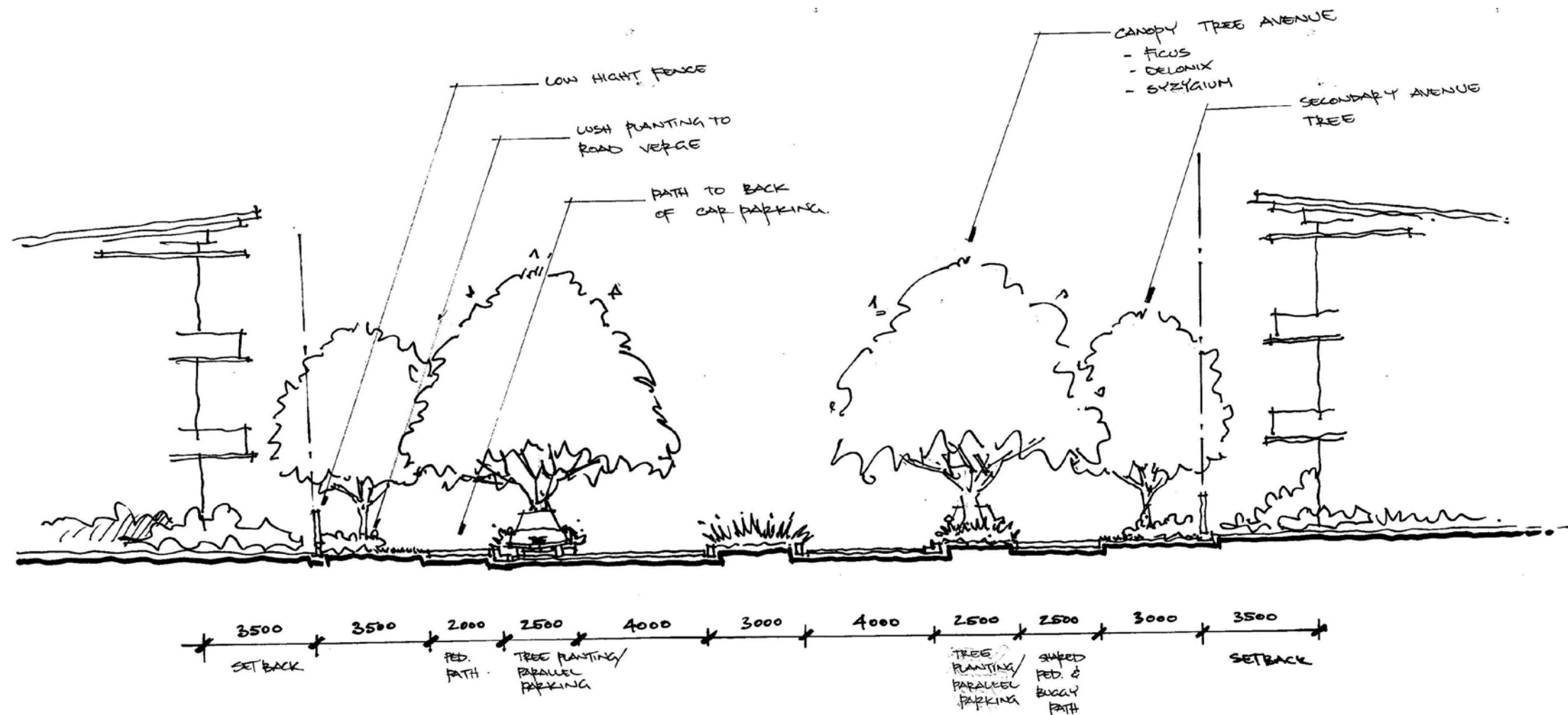


- 1 **Public Spine Road**  
> Informal Street Tree Arrangement
- 2 **Minor Entry Gateway**  
> Feature Road Pavement
- 3 **Major Circulation Road**  
> Refer Streetscape Masterplan
- 4 **Parkway Drive**  
> Double Avenue of Street Trees  
> Refer Streetscape Masterplan
- 5 **Community Parklands Surrounding Existing Dams**  
> Open Lawn Areas  
> Picnic Facilities  
> Pathways
- 6 **Linear gully Park**  
> Pathways  
> Lookouts  
> Natural Endemic Vegetation
- 7 **Rear Lane Access**  
> Refer Streetscape Masterplan
- 8 **Entry to Semi-Private residential Community**
- 9 **Residential Streets**  
> Refer Streetscape Masterplan
- 10 **Future Public Road Connection**  
> Refer Streetscape Master Plan





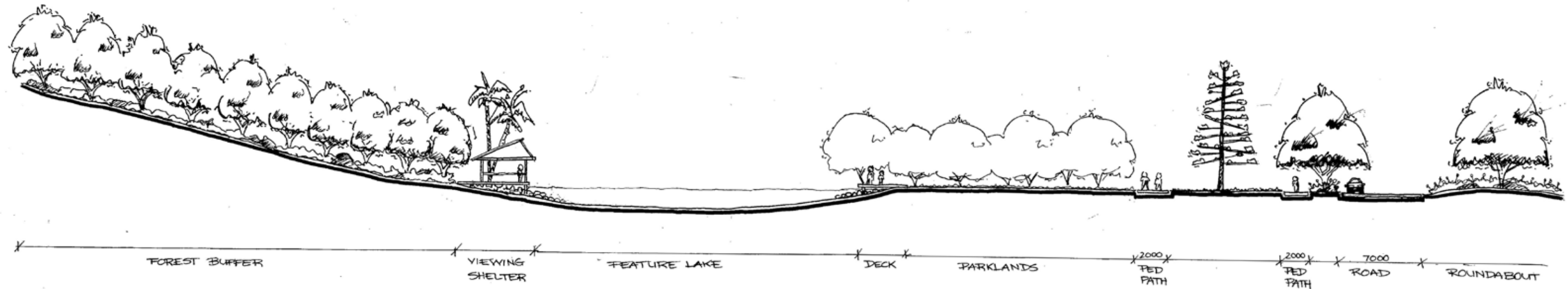
# 4.4 Ridge Top Town Residential



Ridge Top Town Residential  
Parkway Drive



## 4.4 Ridge Top Town Residential



Ridge Top Town Residential  
Town Gully Park



# 4.5 Hillside Town Frame Residential

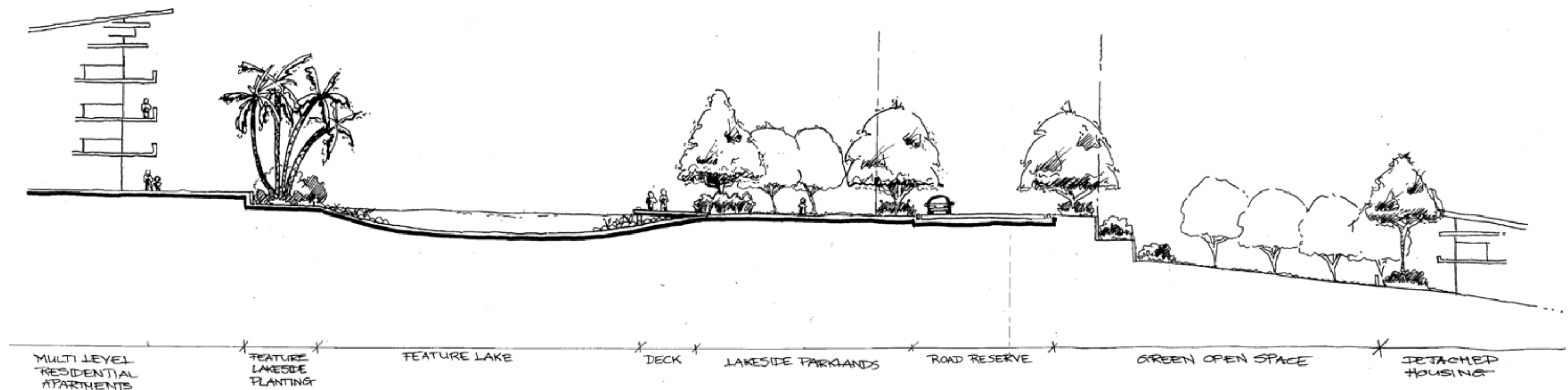


- 1 **Public Spine Road**
- 2 **New Treatment to ... Road**
  - > Avenue Street trees
  - > Landscape Planting
- 3 **Major Entry Roundabout**
  - > Signature Paving & Planting
  - > Feature Walls/ Markers
- 4 **Community Park with Visual Axis from entry Roundabout**
- 5 **Proposed Water Reservoir Set Within Open Space**
- 6 **Community Tennis Courts**
- 7 **Local community Common Park**
- 8 **Residential Street**
  - > Refer Streetscape Masterplan
- 9 **Gully Parklands & Existing Lake**
- 10 **Gully Link Park**
- 11 **Shared Pedestrian/ Buggy Open Space Corridor**
- 12 **Proposed Detached Residential Lots**





## 4.5 Hillside Town Frame Residential



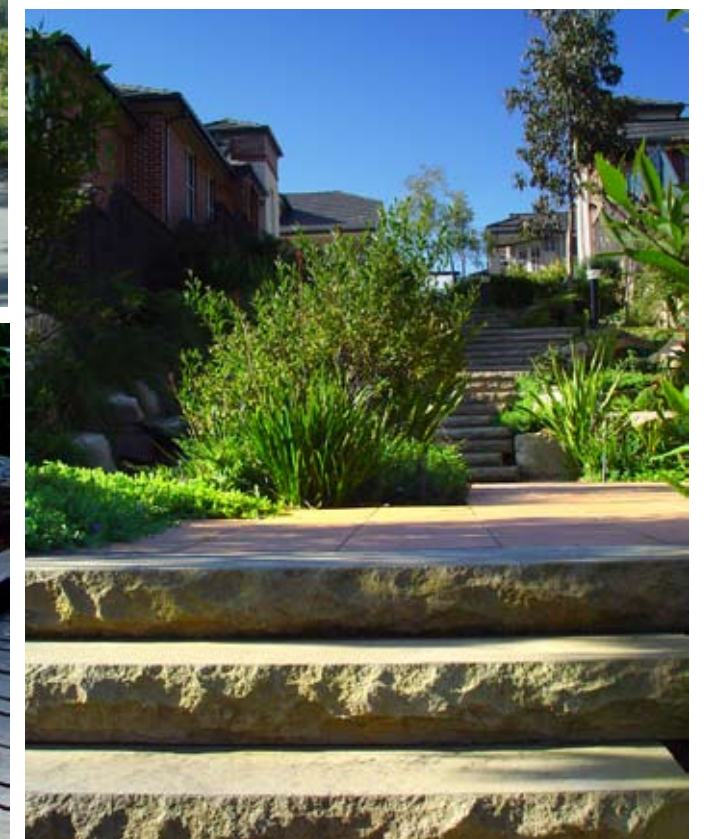
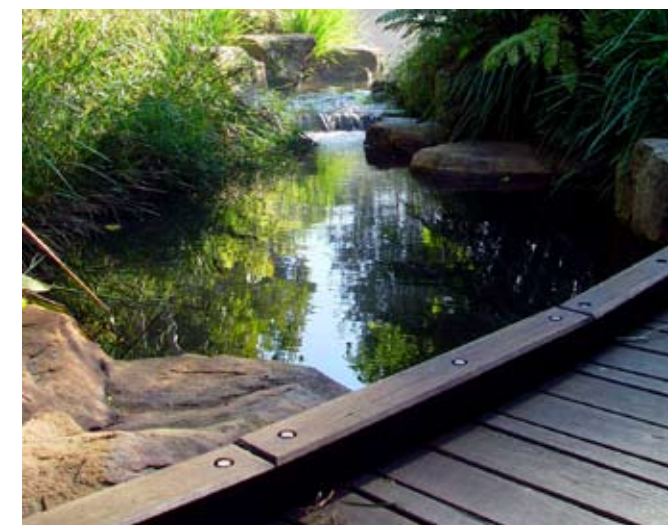
Hillside Town  
Parkland Common



# 4.6 Gateway Village

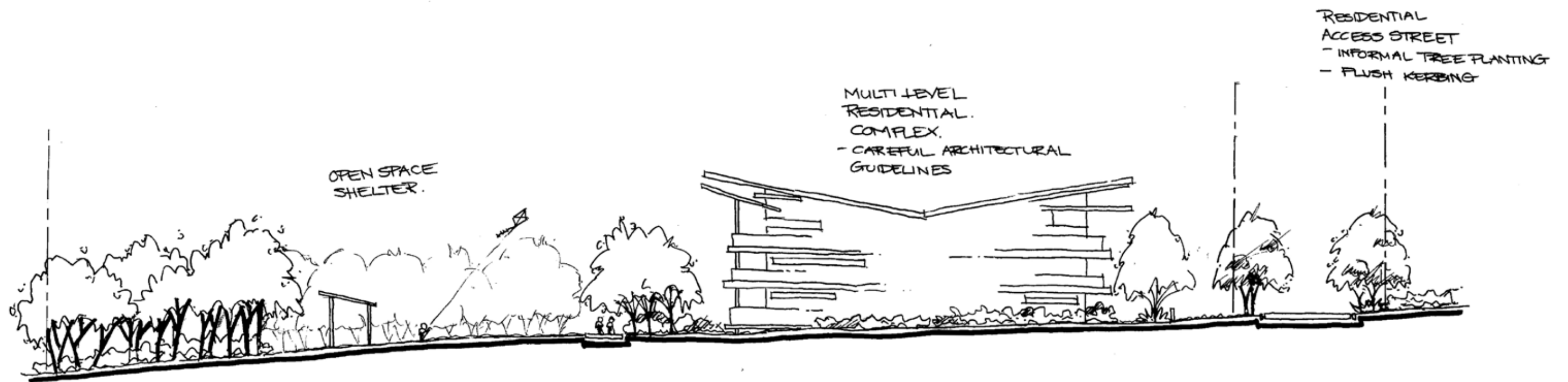


- 1 **Public Spine Road**
- 2 **New Treatment to Marana Street**
  - > Avenue Street trees
  - > Landscape Planting
- 3 **Minor Entry Gateway**
  - > Feature Road Pavement
- 4 **Major Entry Roundabout**
  - > Signature Paving & Planting
  - > Feature Walls/ Markers
- 5 **Proposed Private Community Tennis Courts**
- 6 **Neighbourhood Arrival Roundabout**
  - > Feature Paving & Planting
- 7 **Minor Access Road**
  - > Avenue Tree Planting
- 8 **Community Commons**
  - > Open Lawn Areas
  - > Pathways
  - > Picnic Facilities
- 9 **Shared Pedestrian/ Buggy Open Space Corridor**





## 4.6 Gateway Village



Gateway Village  
Private Community Park Section



# 4.7 Hillside Residential

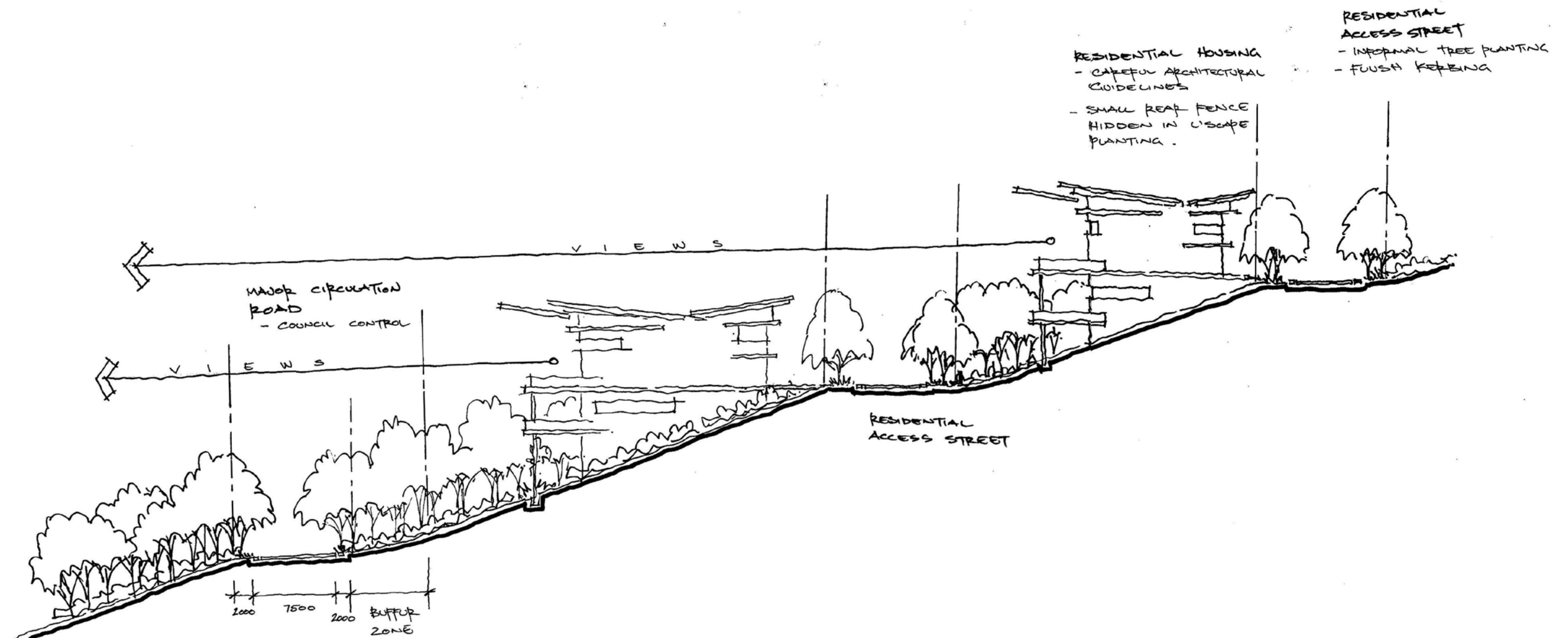


- 1 **Public Spine Road**  
> Informal Street Tree Alignment
- 2 **Minor Entry Gateway**  
> Feature Road Pavement
- 3 **Skyline Drive Roundabout**  
> Signature Planting & Paving
- 4 **Minor Entry Drive Parklands**  
> Visual Landscape  
> Open Lawn Area
- 5 **Existing Dam**  
> Open Parklands  
> Picnic facilities
- 6 **Hillside Dwellings**





# 4.7 Hillside Residential



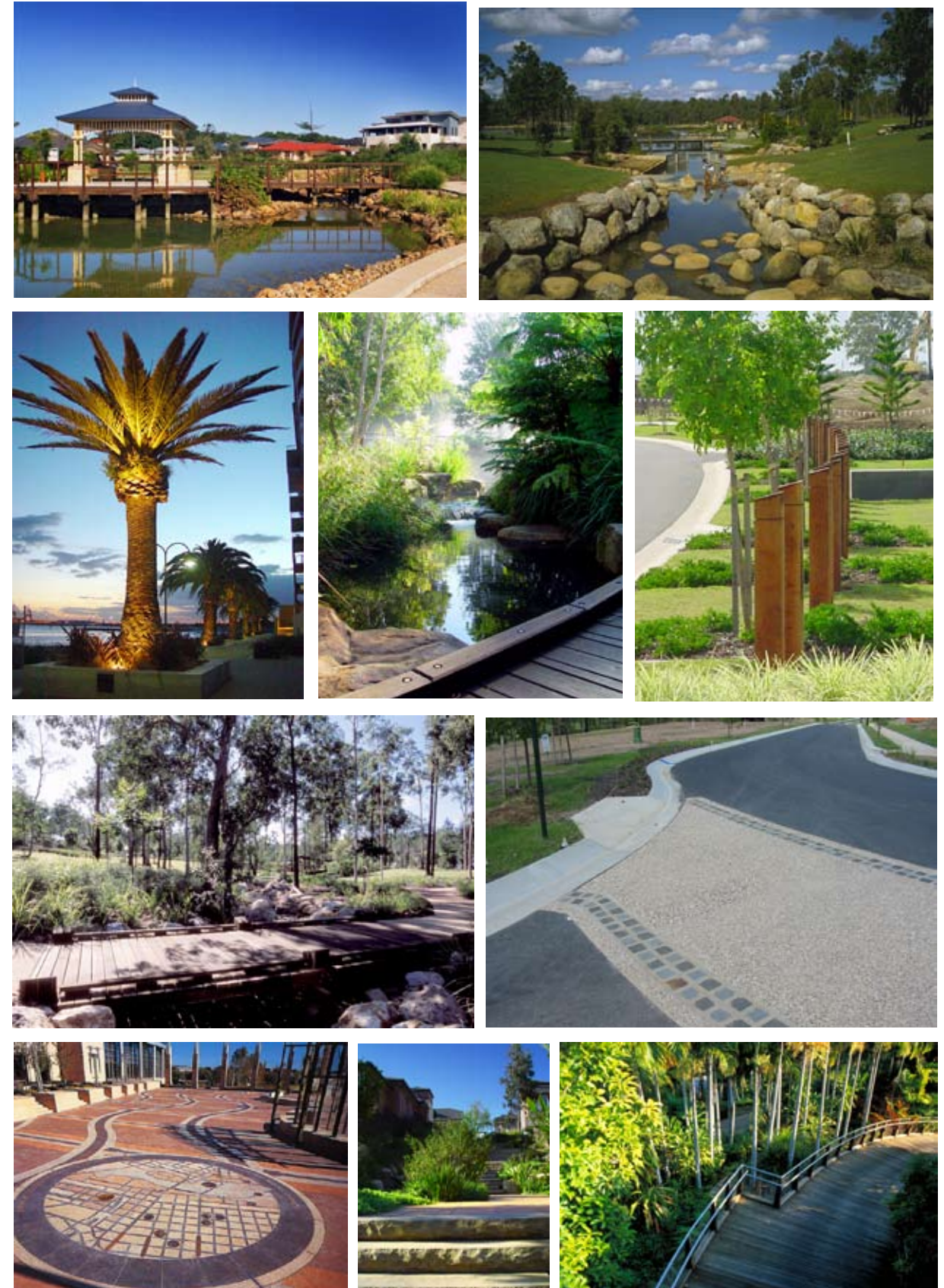
Hillside Housing Section



# 5.0 Landscape Elements

Landscape elements and details including but not limited to street and park furniture, paths and pavements, retaining walls, shelters and ancillary landscape structures will be designed as a coordinated suite or a unified family of elements. Those Elements will match the rainforest site character and proposed architectural themes.

Within the frame of the overall unified suite or family, elements and details will be slightly modified to suit each sub landscape character zone.





## 6.0 Plant Species

Plant species have been selected to match the sites hinterland rainforest character and project vision. A palette of predominant local endemic species will be used through most areas of the site whilst non evasive exotic species will be used as accents in sub-urban areas and zones of intense development. The following is a nominal list of proposed species. This list will be further developed at a later detail design stage





Rise

INDICATIVE PLANT SPECIES

PALETTE

FOR POT SIZES AND DENSITIES  
REFER TO INDIVIDUAL PLANTING  
ZONE DENSITY SCHEDULES

		Endemic to region	Australian native	Exotic species	Green Fire Break Species	Bioretention Species (>300mm)
Botanical Name	Common Name					
LARGE TREES >10m						
Agathis robusta	Queensland Kauri		x			
Araucaria cunninghamiana	Hoop Pine		x			
Argyrodendron trifoliolatum	White Booyong	x	x			
Backhousia myrtifolia	Grey Myrtle	x	x			
Brachychiton acerifolius	Illawarra Flame Tree	x	x		x	
Brachychiton discolor	Queensland Lace Bark		x		x	
Buckinghamia celcissima	Ivory Curl Flower		x			
Castanopora alphandi	Brown tamarind	x	x			
Casuarina cunninghamiana	River She Oak	x	x			
Casuarina glauca	Swamp Oak		x			



# 6.0 Plant Species

Choricarpia subargentea	Giant Ironwood	x	x			
Cinnamomum oliveri	Olivers Sassafras	x	x			
Corymbia gummifera	Red Bloodwood	x	x			
Corymbia henryi	Large Leaved Spotted Gum	x	x			
Corymbia intermedia	Pink Bloodwood	x	x			
Cryptocarya glaucescens	Jackwood	x	x			
Cryptocarya microneura	Muragon	x	x			
Cryptocarya obovata	Pepper Berry Tree	x	x			
Cryptocarya triplinervis	Brown Laurel	x	x			
Decaspermum humile	Silky Myrtle	x	x			
Diploglottis australis	Native Tamarind	x	x		x	
Elaeocarpus eumundii	Eumundi Quandong		x		x	
Elaeocarpus grandis	Blue Quandong	x	x		x	
Elaeocarpus kirtonii	Silver Quandong	x	x		x	
Elaeocarpus obovatis	Hard Quandong	x	x		x	
Elaeocarpus reticulatus	Blueberry Ash	x	x		x	
Eucalyptus acmenoides	White Stringybark	x	x			
Eucalyptus carnea	Broad-leaved white mahogany	x	x			
Eucalyptus major	Large Fruited Greygum	x	x			
Eucalyptus pilularis	Blackbutt	x	x			
Eucalyptus propinqua	Queensland Grey Gum	x	x			
Eucalyptus siderophioia	Grey Ironbark	x	x			
Eucalyptus tereticornis	Forest Red Gum	x	x			
Eurochinus falcata	Ribbonwood	x	x			
Ficus coronata	Creek Sandpaper Fig	x	x			
Ficus fraseri	Sandpaper fig	x	x			
Ficus hillii			x			
Ficus macrophylla	Moreton Bay Fig	x	x			
Ficus obliqua	Small-leaved Fig	x	x			
Ficus rubiginosa	Rock Fig	x	x			
Ficus superba	Deciduous Fig	x	x			
Ficus virens	Spotted Fig	x	x			



# 6.0 Plant Species

<i>Ficus watkinsiana</i>	Strangler Fig	x	x			
<i>Flindersia australis</i>	Crows Ash		x		x	
<i>Flindersia brallianna</i>	Queensland Maple		x		x	
<i>Flindersia schottiana</i>	Bumpy Ash	x	x		x	
<i>Geissois benthamii</i>	Red Carrabeen	x	x			
<i>Gossia bidwillii</i>	Scrub Python Tree	x	x			
<i>Gmelina leichardtii</i>	White Beech	x	x			
<i>Grevillea hilliana</i>	White Silky Oak	x	x			
<i>Grevillia robusta</i>	Silky Oak	x	x			
<i>Jagera pseudorhus</i>	Foambark Tree	x	x			
<i>Lophostemon confertus</i>	Brush Box	x	x			
<i>Lophostemon suaveolens</i>	Swamp Box	x	x			
<i>Mallotus philipensis</i>	Red Kamala	x	x			
<i>Melia azederach v. australasica</i>	White Cedar	x	x			
<i>Mellicope elleryana</i>	Pink Euodia		x		x	
<i>Mischocarpus pyriformis</i>	Yellow Pear Fruit	x	x			
<i>Podocarpus elatus</i>	Brown Pine	x	x		x	
<i>Polyscias elegans</i>	Cellerywood	x	x		x	
<i>Polyscias murrayi</i>	Pencil Cedar	x	x		x	
<i>Pouteria australis</i>	Black Apple	x	x			
<i>Pouteria queenslandica</i>	Blush Coondoo	x	x			
<i>Rhodosphaera rhodanthema</i>	Tulip Satinwood	x	x		x	
<i>Sloanea australis</i>	Maidens Blush	x	x			
<i>Sloanea woollsii</i>	Yellow Carabeen	x	x		x	
<i>Stenocarpus salignus</i>	Beefwood	x	x			
<i>Stenocarpus sinuatus</i>	Fire Wheel Tree	x	x		x	
<i>Syzygium francisii</i>	Giant Water Gum	x	x		x	
<i>Syzygium hemilampra</i>	Broad Leaf Lilly Pilly	x	x		x	
<i>Syzygium leuhmanniae</i>	Ri Berry	x	x		x	
<i>Syzygium moorei (v)</i>	Durobby	x	x		x	
<i>Syzygium smithii</i>	Lilly Pilly	x	x		x	
<i>Syzygium tierneyanum</i>	River Cherry		x			



# 6.0 Plant Species

Toeckima dasyrrhache	Blunt Leaf Steelwood	x	x			
Toona ciliata	Red Cedar	x	x		x	
Waterhousea floribunda	Weeping Lilly Pilly	x	x		x	
Waterhousea unipuntata	Rolly Polly Satinash	x	x		x	
<b>SMALL TREES &lt;10m</b>						
Alectryon tomentosus	Hairy Birdseye	x	x		x	
Alloxylon flammeum	Tree Waratah		x		x	
Alloxylon pinnatum	Dorrigo Waratah	x	x		x	
Archidendron hendersonii	White Lace Flower	x	x			
Backhousea citriodora	Lemon Scented Myrtle		x			
Banksia integrifolia	Coastal Wattle	x	x			
Callistemon viminalis	Weeping Bottlebrush	x	x			
Cassia marksiana	Marks Cassia	x	x			
Cupaniopsis anacardioides	Tuckeroo	x	x		x	
Cupaniopsis flagelliformis	Brown Tuckeroo	x	x		x	
Cupaniopsis newmanii	Long Leaved Tuckeroo		x		x	
Diploglottis campbellii	Small Leafed Tamarind	x	x		x	
Endiandra globosa	Black Walnut	x	x		x	
Endiandra muelleri	Green-leaved Rose Walnut	x	x		x	
Endiandra pubens	Hairy Walnut	x	x		x	
Glochidion ferdinandi	Cheese Tree	x	x		x	
Harpullia alata	White-winged Tulip	x	x		x	
Harpullia pendula	Tulipwood		x		x	
Hymenosporum flavescens	Native Frangipani	x	x		x	
Lepiderema purchella	Fine Leaved Tuckeroo	x	x		x	
Macadamia integrifolia	Queensland nut	x	x			
Macadamia tetraphylla	Rough Leaved Macadamia	x	x			
Macaranga tanarius	Macaranga	x	x		x	
Magnolia graniflora	Magnolia			x		
Melaleuca quinquenervia	Paper Bark	x	x			
Orites excelsa	Mountain Silky Oak	x	x			



# 6.0 Plant Species

Pandanus tectorius	Pandanus		x			
Plumeria obtusa	Frangipani			x		
Plumeria rubra	Frangipani			x		
Sarcopteryx stipata	Steelwood	x	x			
Synoum glandulosum	Bastard Rosewood	x	x			
Syzygium australe	Scrub Cherry		x		x	
Syzygium oleosum	Blue Lilly Pilly	x	x		x	
Tabebuia palmeri	Pink Flowering Tabebuia			x		
<b>PALMS, FERNS AND CYCADS</b>						
Archontophoenix alexandrae	Alexandra Palm		x		x	
Archontophoenix cunninghamiana	Picabeen Palm	x	x		x	
Asplenium australasicum	Bird's nest fern	x	x		x	
Bismarckia nobillis	Bismarck Palm			x		
Blechnum ambiguum	Tangle Fern	x	x			
Cyathea cooperi	Scaly Treefern	x	x		x	
Cyathea leichardtiana	Prickly Treefern	x	x		x	
Cycas revoluta	Japanese Cycad			x		
Dicksonia antartica	Soft Treefern		x			
Doodia aspera	Prickly Rasp Fern	x	x			
Doodia media	Common Rasp Fern	x	x			
Lepidozamia peroffskyana	Burrawang Palm	x	x		x	
Linospadix monostachya	Walking Stick Palm	x	x			
Livistona australis	Cabbage Palm		x			
Neodypsis decaryi	Triangle Palm			x		
Rhapis excelsa	Lady Palm			x		
Todea barbara	King Fern		x			
Zamia ferferacia	Mexican Cardboard Palm			x		
<b>SHRUBS</b>						
Alpinia arundelliana	Narrow Leaved Native Ginger	x	x			



# 6.0 Plant Species

Alpinia caerulea	Native Ginger	x	x			
Alpinia zerumbet 'variegatta'	Shell Ginger			x		
Atractocarpus chartaceus	Narrow Leaved Gardenia	x	x			
Atractocarpus fitzalanii	Brown Gardenia		x			
Azalea spp.	Azaleas			x		
Baeckea virgata dwarf	Weeping Heath Myrtle		x			
Banksia robur	Swamp Banksia		x			
Banksia spinulosa	Honeysuckle Banksia	x	x			
Brunfelsia spp.	Yesterday, Today, Tomorrow			x		
Callistemon spp	Bottlebrush		x			
Camillia spp.	Camillia			x		
Cassine australis	Red Olive Plum		x			
Codiaeum variegatum	Croton			x		
Cordyline australis	Green Palm Dracenia			x		
Cordyline congesta	Palm Lilly	x	x			
Cordyline fruticosa	Ti Plant		x			
Cordyline negra				x		
Cordyline petiolaris	Broard Leaved Palm Lilly	x	x			
Cordyline rubra	Red Fruited Palm Lilly	x	x			
Cordyline stricta	Narrow Leaved Palm Lilly	x	x			
Crinum pendunculatum	Spider Lilly		x			
Decaspermum humile	Silky Myrtle	x	x			
Doryanthes excelsa	Gymea lilly		x			
Doryanthes palmerii	Giant Spear lilly		x			
Dracaena marginata 'Tricolour'				x		
Gardenia spp.	Gardenia			x		
Grevillea 'Forest Rambler'			x			
Grevillea 'Honey Gem'			x			
Grevillea 'Poorinda Royal Mantle'			x			
Grevillea spp			x			
Heliconia spp.	False Bird of Paradise			x		
Hibiscus heterophyllus	Native rosella	x	x			



# 6.0 Plant Species

Hibiscus splendens	Native Hollyhock Tree	x	x			
Hymenocallis littoralis	Beach Spider Lily		x			
Ixora Coccinea	Flame of the Woods			x		
Megaskepasma erythrochlamys	Brazilian Red Coat			x		
Melaleuca Claret Tops	Claret Tops		x			
Melaleuca decora	White Feather Honey Myrtle	x	x			
Melastoma affine	Blue tongue		x			
Metrosideros thomasi	Metrosideros			x		
Michelia figo	Port Wine Magnolia			x		
Pavetta australiensis	Butterfly Bush		x			
Philodendron 'Evergreen Giant'	Philodendron			x		
Philodendron 'Red Emperor'	Philodendron			x		
Philodendron 'Salome'	Philodendron			x		
Philodendron 'Tango'	Philodendron			x		
Philodendron 'Xanadu'	Philodendron			x		
Phormium spp.	New Zealand flax			x		
Randia moorei	Spiny Gardenia	x	x			
Rhodamnia maideniana	Smooth Scrub Turpentine	x	x			
Rhodamnia rubescens	Brush Turpentine	x	x			
Strelitzia reginae	Bird of Paradise			x		
Syzygium 'Aussie Copper'	Aussie Copper		x			
Syzygium paniculatum 'Elite'			x			
Syzygium 'Tiny Trev'			x			
Westringea fruticosa	Native Rosemary		x			
Xanthorrhoea macronema	Grass Tree	x	x			
<b>GROUNDCOVERS &amp; CLIMBERS</b>						
Aechmea spp.	Bromeliad			x		
Aglaonema 'Silver Queen'				x		
Alocasia brisbanensis	Conjevoi	x	x		x	
Aspidatira spp.	Cast Iron Plant			x		
Austromyrtus dulcis	Midyim		x			



# 6.0 Plant Species

Bromeliad	Bromeliad			x		
Calathea spp.				x		
Callistemon 'Little John'			x			
Callyera australis	Blunt Wisteria		x			
Cissus antarctica	Kangaroo Vine	x	x			
Clivia spp.	Kafir lilly			x		
Ctenanthe				x		
Dampiera diversifolia			x			
Dianella caerulea var. caerulea	Blue Flax Lilly	x	x			x
Dianella longifloia var. longifolia	Smooth Flax Lilly	x	x			x
Dianella spp.	Flax Lillies					x
Faradaya splendida	Glory Vine		x			
Ficus pumila	Climbing Fig			x		
Grevillea 'Bronze Rambler'			x			
Hardenbergia violacea	Sarsparilla Vine	x	x			
Heliconia spp.	Heliconia			x		
Iresine herbstii	Bloodleaf			x		
Liriope spp.				x		
Ophiopogon japonicus	Mondo Grass			x		
Pandorea jasminoides	Bower Vine	x	x			
Pandorea pandorana 'Golden Showers'	Wonga Wonga Vine		x			
Pollia crispata		x	x		x	
Rhoeo spp.				x		
Scaevola calendulacea	Scented Fan Flower		x		x	
Spathiphyllum wallisii	Peace Lilly			x		
Tecomanthe hillii	Frazer Island Creeper			x		
Tillandsia spp.	Bromeliad			x		
Trachelospermum jasminodes	Varigated Star Jasmine			x		



6.0Plant Species

NATIVE GRASSES						
Cymbopogon refractus	Barbed Wire Grass		x			
Gahnia sieberiana	Red Fruited Saw Sedge	x	x			x
Lomandra confertifolia	Fine Leaved Lomandra	x	x			x
Lomandra hystrix	River Mat-Rush	x	x			x
Lomandra longifolia	Long-Leaved Mat Rush	x	x			x
Lomandra multiflora	Many Flowered Mat-Rush		x			x
Lomandra spicata	Rainforest Mat-Rush	x	x			
Poa labillardieri	Tussock Grass		x			x
Restio tetraphyllus	Foxtails		x			
Themeda triandra	Kangaroo Grass		x			