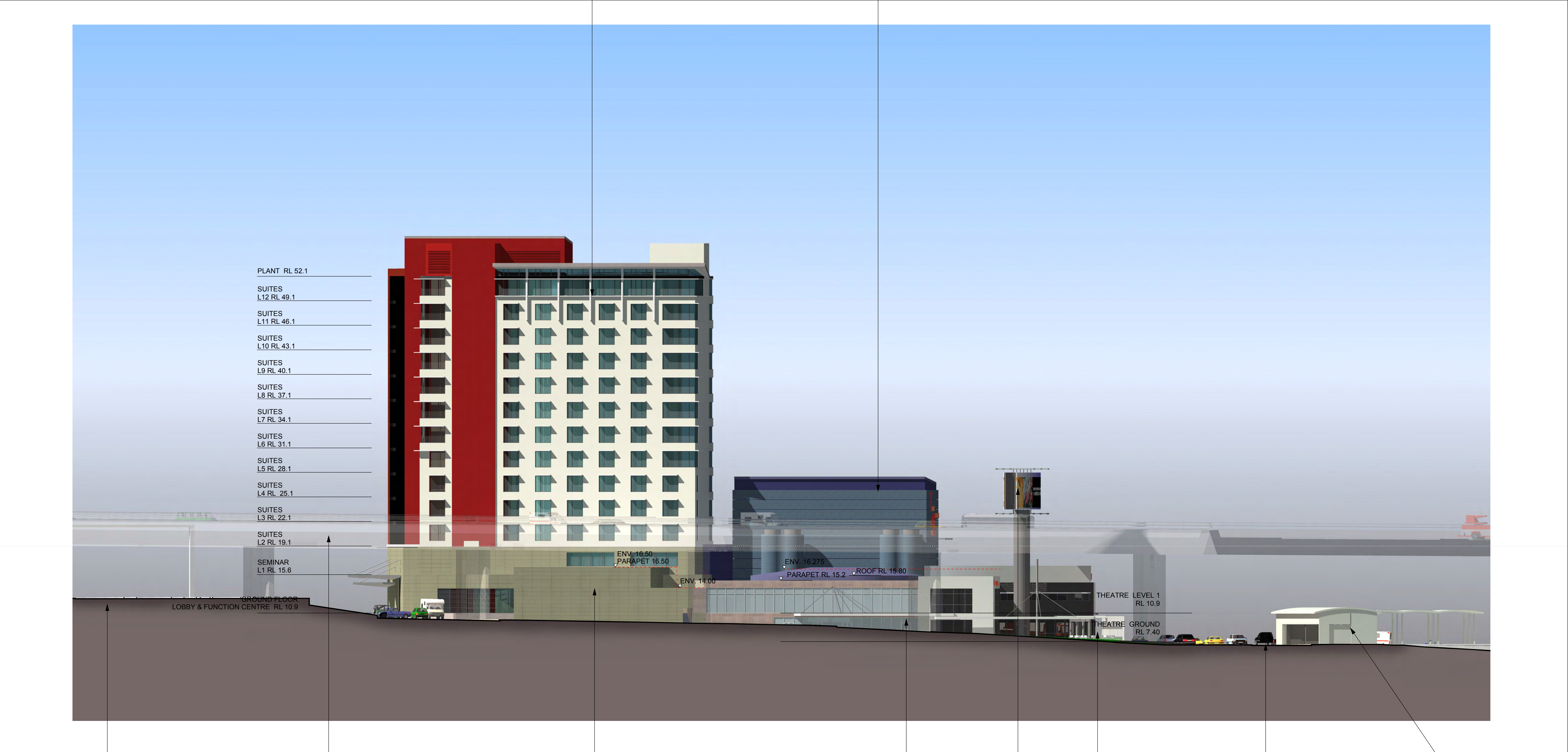


BUILDING Q
PROPOSED HOTEL

BUILDING P
PROPOSED THEATRE



NORTHERN RAILWAY LINE WESTERN MOTORWAY IN FOREGROUND FUNCTION CENTRE THEATRE ENTRANCE PYLON SIGN **BUILDING O** PROPOSED RETAIL GEORGE STREET BUILDING D

N O R T H E L E V A T I O N - R A I L W A Y L A N E