

Highgate - Upper Levels

Proposed Concept Plan Amendment (MOD 4) Indicative Design
Level 25 - RL90.187

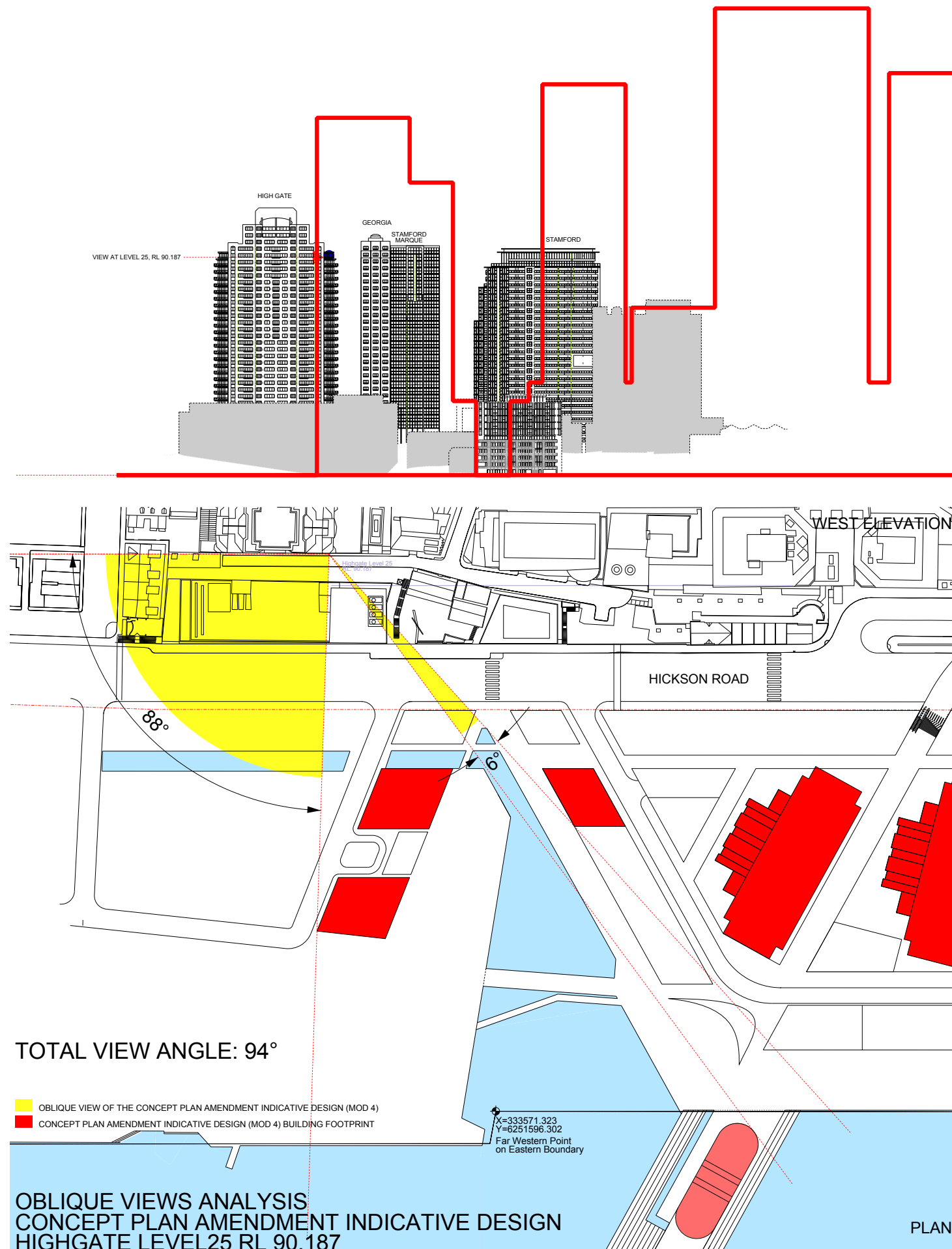


Image showing view from Level 25 from Highgate
Proposed Concept Plan Amendment (MOD 4) Indicative Design



Provided from animation by Virtual Ideas

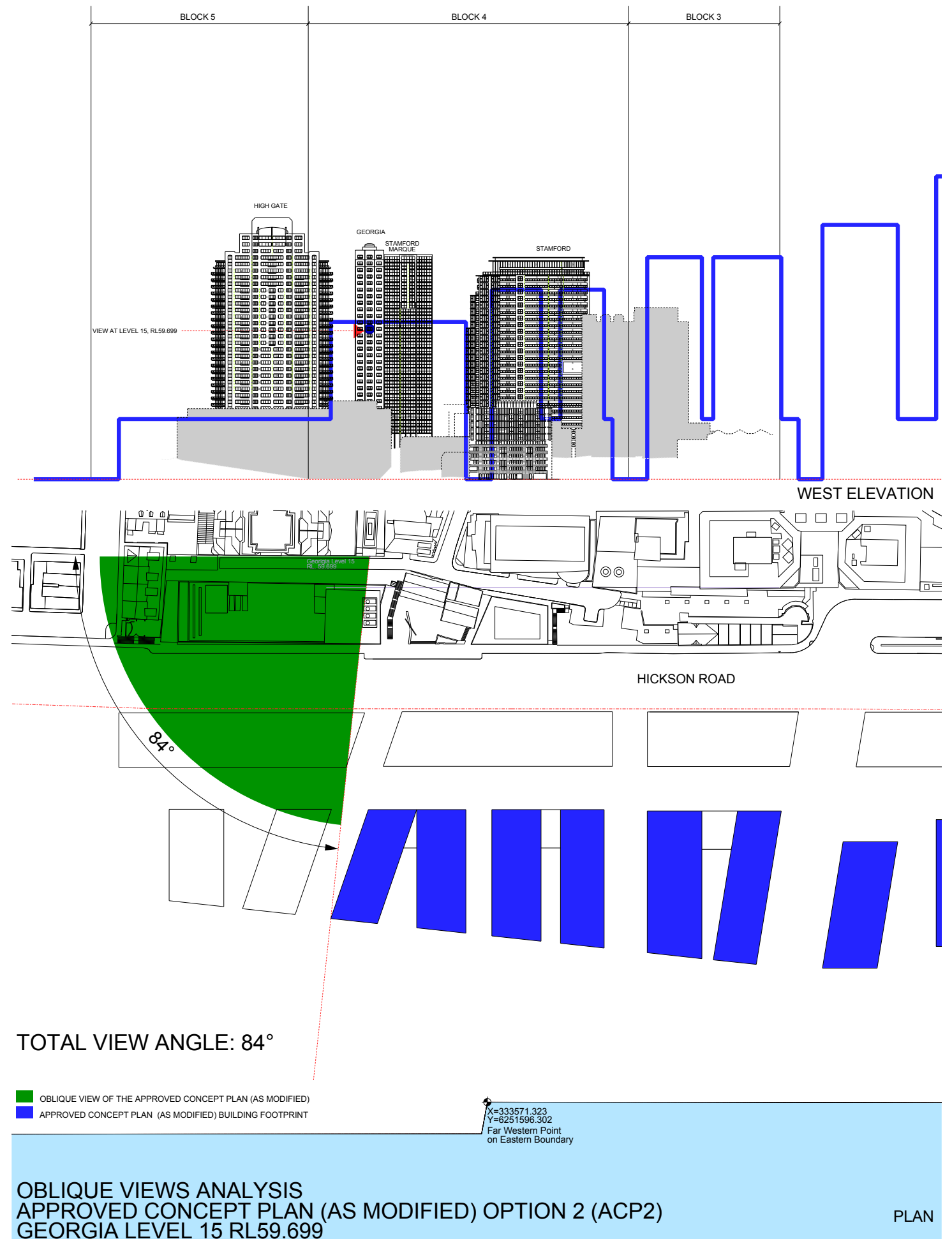
Georgia - Lower Levels

Approved Concept Plan (As Modified) Option 2 (ACP2) Indicative Design
Level 15 - RL59.699

Georgia - Views at Level 15 at RL59.699

- Approved Concept Plan (as modified) Option 2 Indicative Design
Existing uninterrupted view angle 84°
- Proposed Concept Plan Amendment (Mod 4) Indicative
Uninterrupted view angle 88°

Uninterrupted view greater than 54° is maintained



Georgia - Lower Levels

Proposed Concept Plan Amendment (MOD 4) Indicative Design

Level 15 - RL59.699

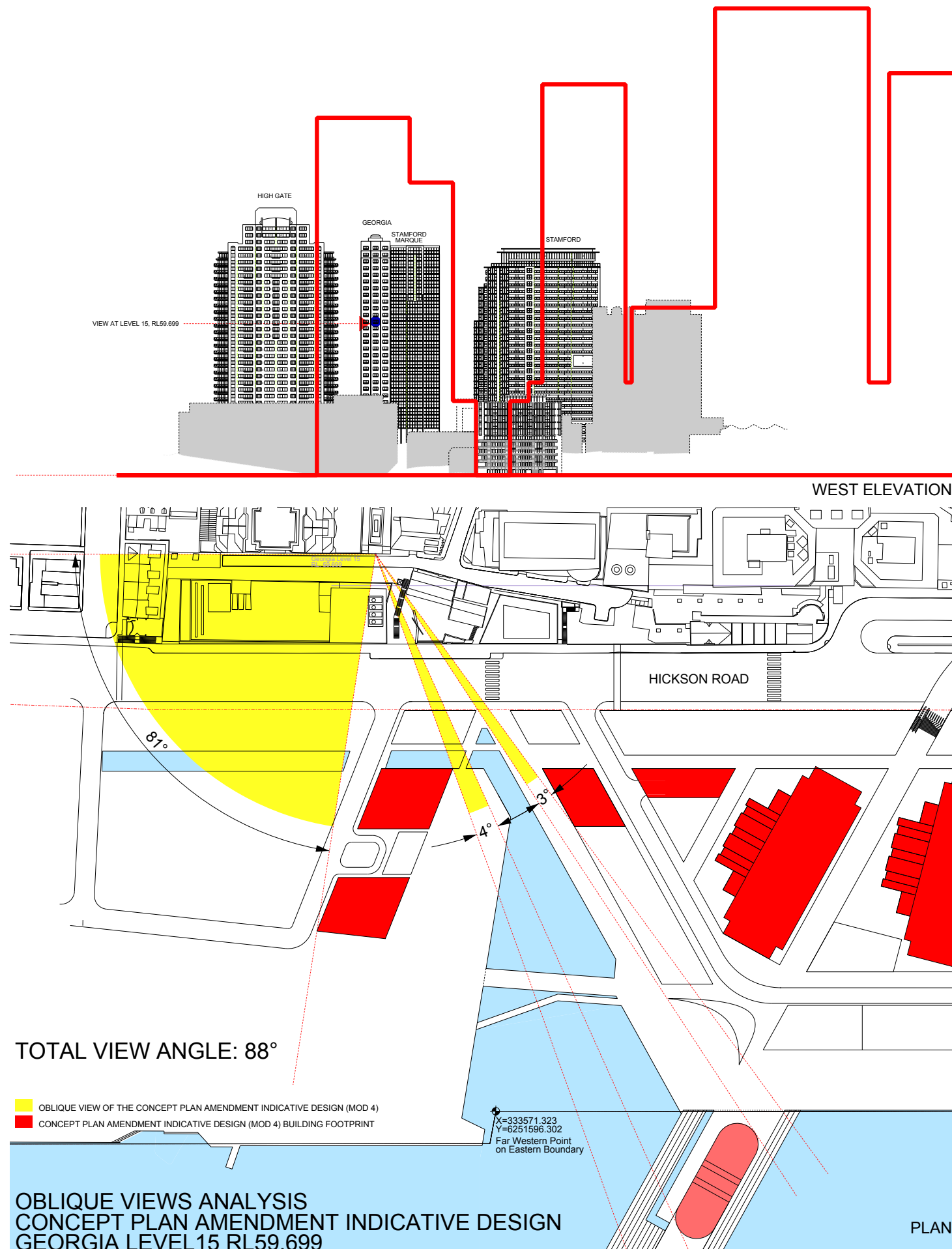


Image showing view from Level 15 from Georgia
Proposed Concept Plan Amendment (MOD 4) Indicative Design



Provided from animation by Virtual Ideas

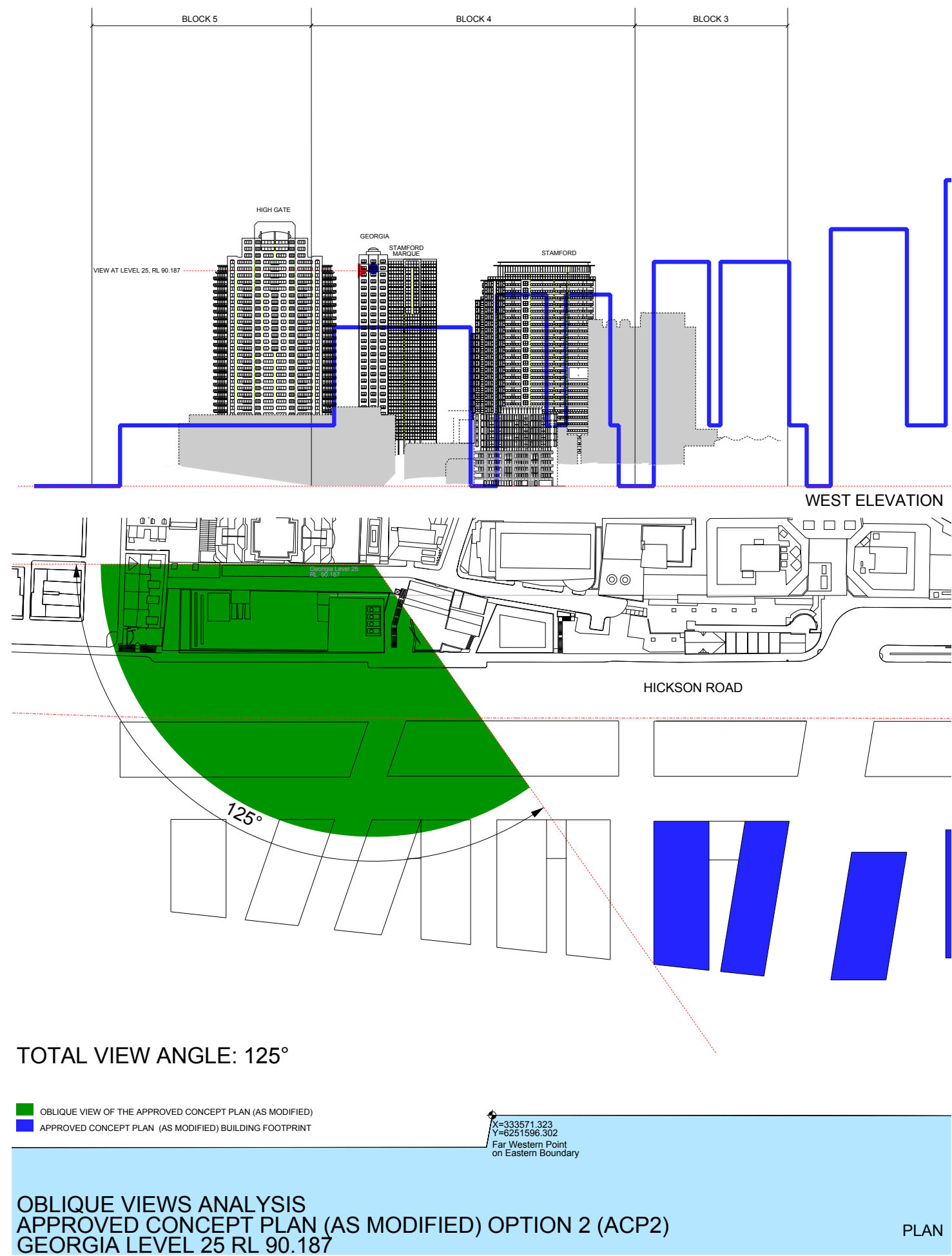
Georgia - Upper Levels

Approved Concept Plan (As Modified) Option 2 (ACP2) Indicative Design
Level 25 - RL90.187

Georgia - Views at Level 25 at RL90.187

- Approved Concept Plan (as modified) Option 2 Indicative Design
Existing uninterrupted view angle 125°
- Proposed Concept Plan Amendment (Mod 4) Indicative
Uninterrupted view angle 88°

Uninterrupted view greater than 54° is maintained



Georgia - Upper Levels

Proposed Concept Plan Amendment (MOD 4) Indicative Design

Level 25 - RL90.187

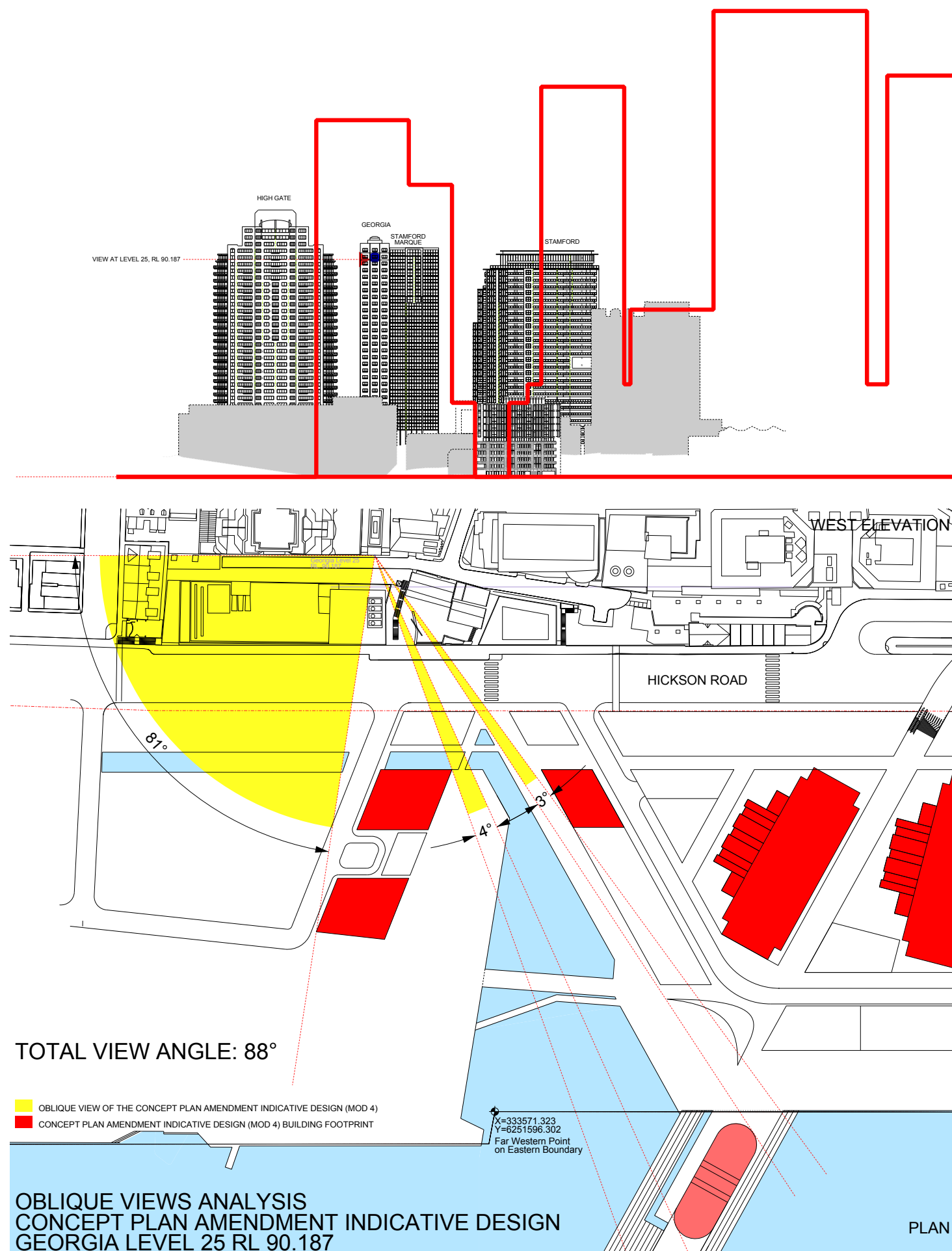


Image showing view from Level 25 from Georgia
Proposed Concept Plan Amendment (MOD 4) Indicative Design



Provided from animation by Virtual Ideas

Stamford Marquee - Lower Levels

Approved Concept Plan (As Modified) Option 2 (ACP2) Indicative Design
Level 15 - RL59.699

Stamford Marquee - Views at Level 15 at RL59.699

- Approved Concept Plan (as modified) Option 2 Indicative Design
Existing uninterrupted view angle 77°
- Proposed Concept Plan Amendment (Mod 4) Indicative
Uninterrupted view angle 87°

Uninterrupted view greater than 54° is maintained

