

# Stamford Marquee - Lower Levels

Proposed Concept Plan Amendment (MOD 4) Indicative Design

Level 15 - RL59.699

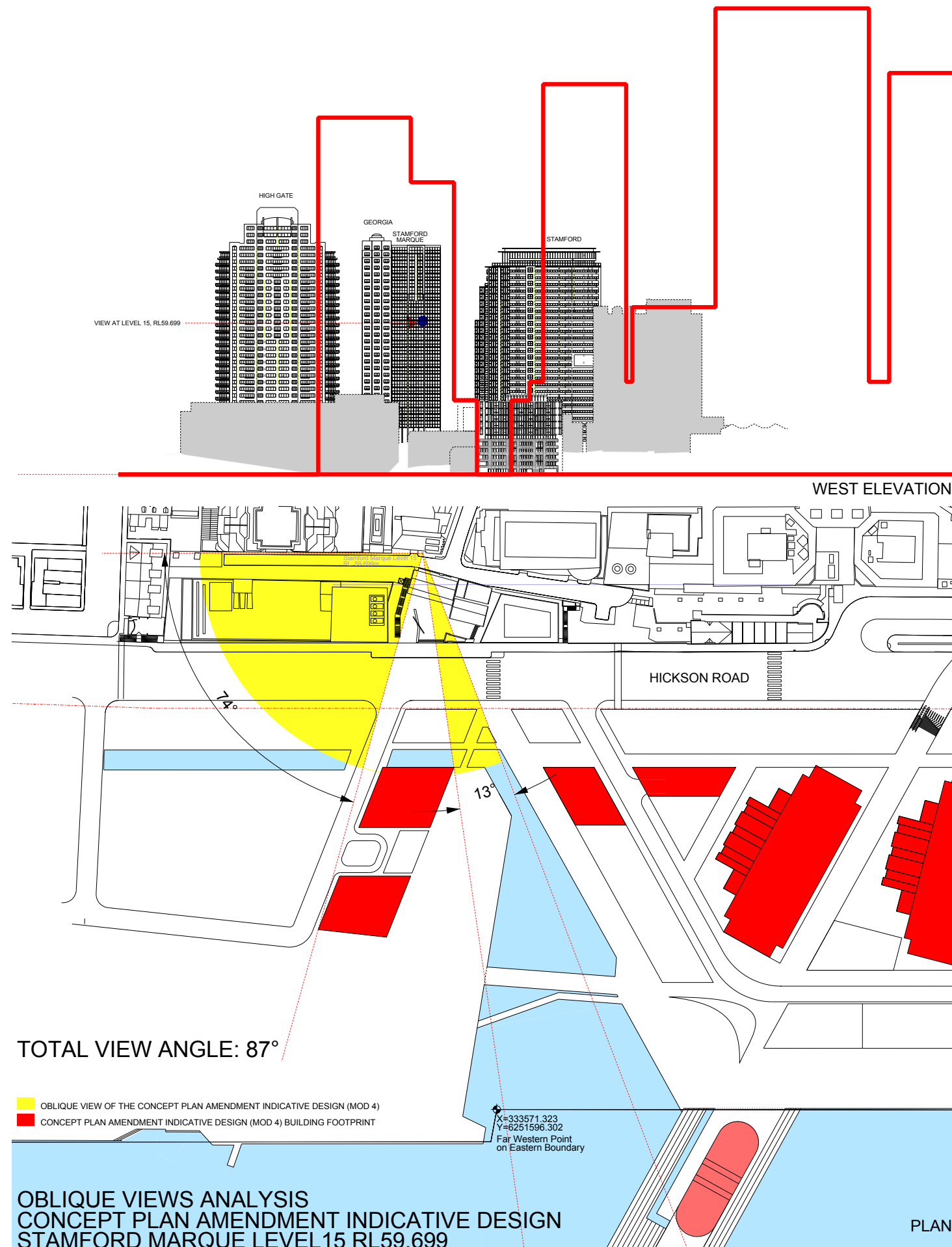


Image showing view from Level 15 from Stamford Marquee  
Proposed Concept Plan Amendment (MOD 4) Indicative Design



Provided from animation by Virtual Ideas

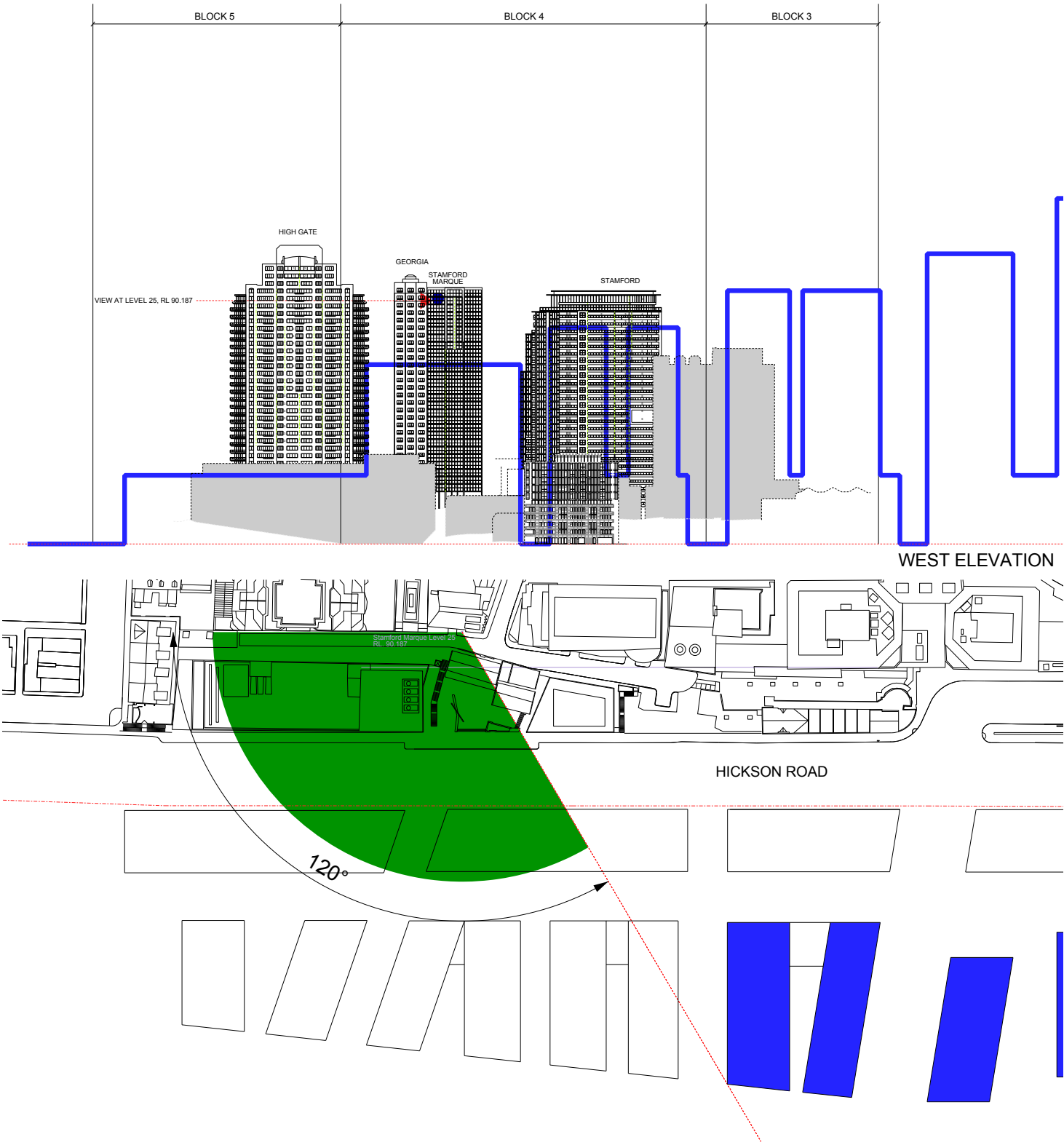
# Stamford Marque - Upper Levels

Approved Concept Plan (As Modified) Option 2 (ACP2) Indicative Design  
Level 25 - RL90.187

## Stamford Marque - Views at Level 25 at RL90.187

- Approved Concept Plan (as modified) Option 2 Indicative Design  
Existing uninterrupted view angle 120°
- Proposed Concept Plan Amendment (Mod 4) Indicative  
Uninterrupted view angle 87°

Uninterrupted view greater than 54° is maintained



TOTAL VIEW ANGLE: 120°

OBLIQUE VIEW OF THE APPROVED CONCEPT PLAN (AS MODIFIED)  
APPROVED CONCEPT PLAN (AS MODIFIED) BUILDING FOOTPRINT

X=333571.323  
Y=6251596.302  
Far Western Point  
on Eastern Boundary

OBLIQUE VIEWS ANALYSIS  
APPROVED CONCEPT PLAN (AS MODIFIED) OPTION 2 (ACP2)  
STAMFORD MARQUE LEVEL 25 RL 90.187

PLAN



# Stamford Marquee - Upper Levels

Proposed Concept Plan Amendment (MOD 4) Indicative Design

Level 25 - RL90.187

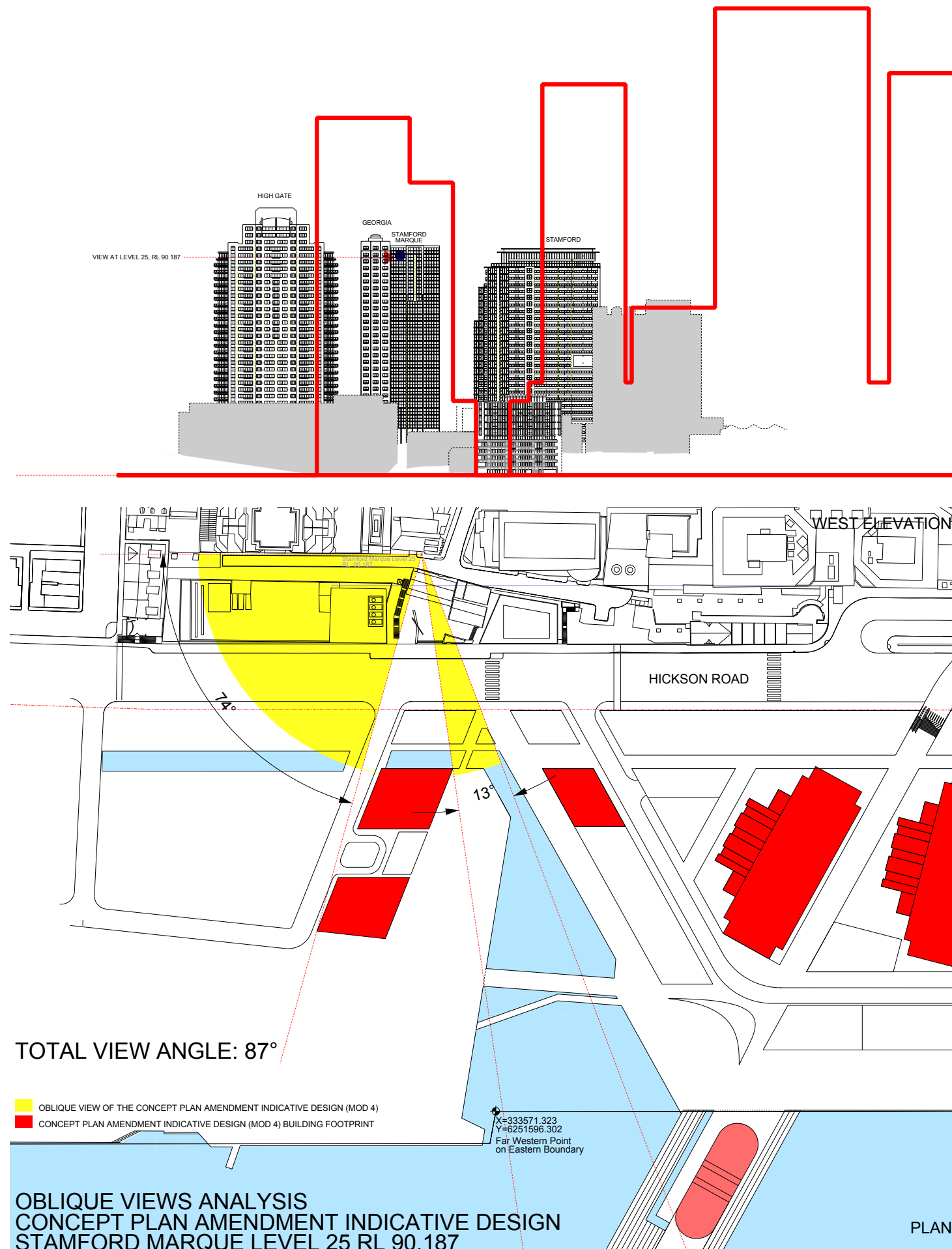


Image showing view from Level 25 from Stamford Marquee  
Proposed Concept Plan Amendment (MOD 4) Indicative Design



Provided from animation by Virtual Ideas

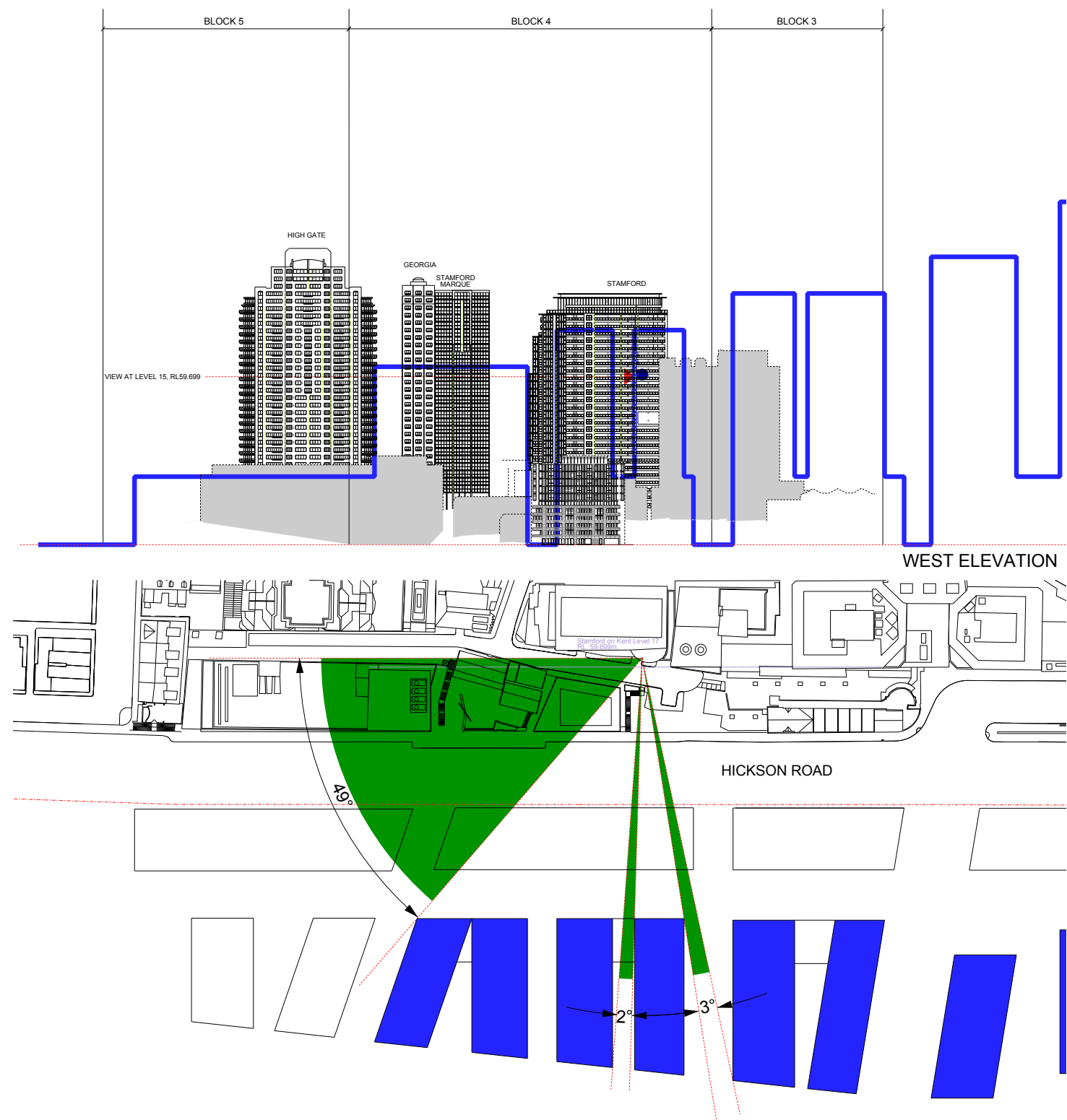
# Stamford on Kent - Lower Levels

Approved Concept Plan (As Modified) Option 2 (ACP2) Indicative Design  
Level 15 - RL59.699

## Georgia - Views at Level 15 at RL59.699

- Approved Concept Plan (as modified) Option 2 Indicative Design  
Existing uninterrupted view angle 54°
- Proposed Concept Plan Amendment (Mod 4) Indicative  
Uninterrupted view angle 62°

Uninterrupted view greater than 54° is maintained



TOTAL VIEW ANGLE: 54°

OBLIQUE VIEW OF THE APPROVED CONCEPT PLAN (AS MODIFIED)  
APPROVED CONCEPT PLAN (AS MODIFIED) BUILDING FOOTPRINT  
X=333571.323  
Y=6251596.302  
Far Western Point  
on Eastern Boundary

OBLIQUE VIEWS ANALYSIS  
APPROVED CONCEPT PLAN (AS MODIFIED) OPTION 2 (ACP2)  
STAMFORD ON KENT LEVEL 17 RL59.699  
PLAN



# Stamford on Kent - Lower Levels

Proposed Concept Plan Amendment (MOD 4) Indicative Design  
Level 15 - RL59.699

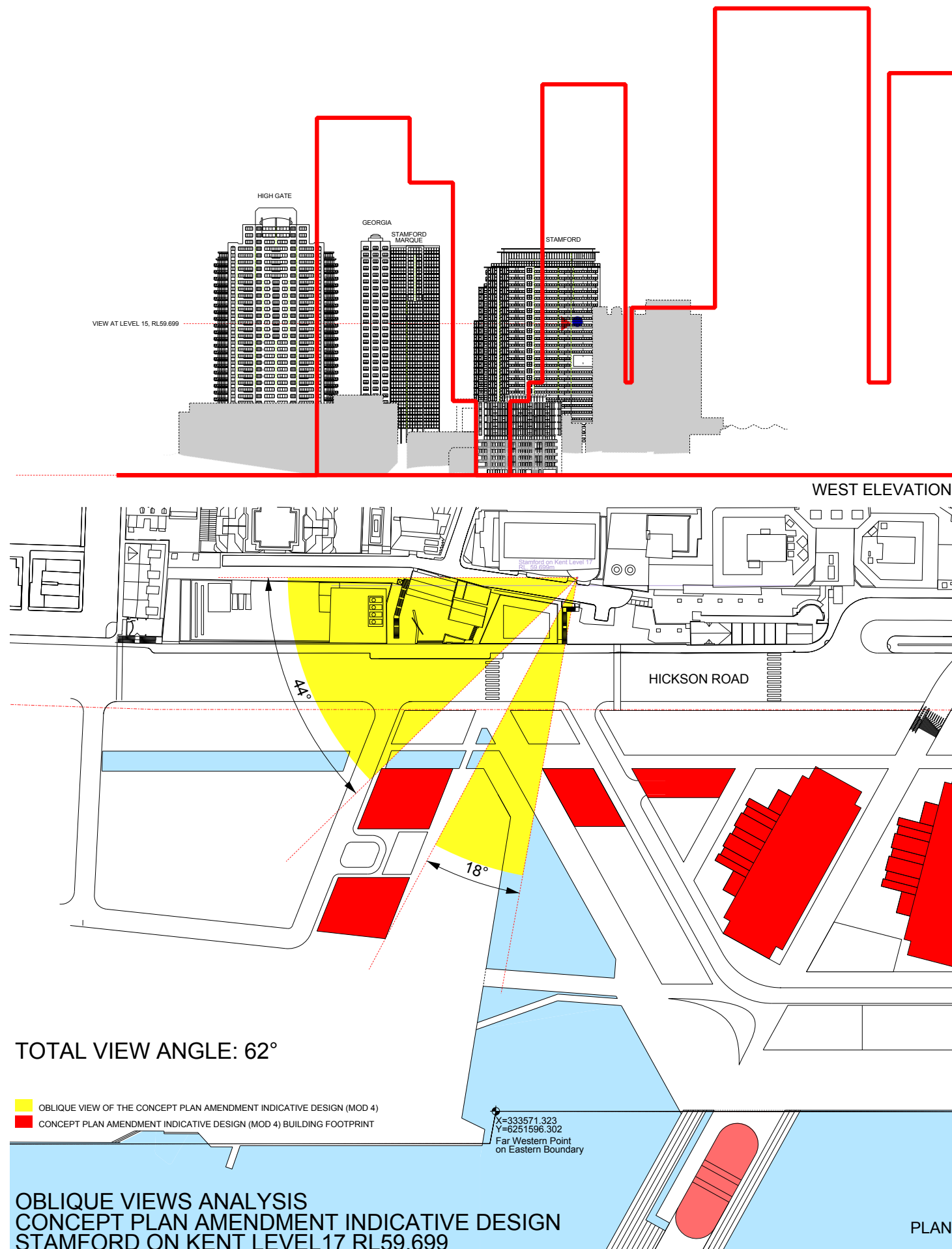


Image showing view from Level 15 Stamford on Kent  
Proposed Concept Plan Amendment (MOD 4) Indicative Design



Provided from animation by Virtual Ideas

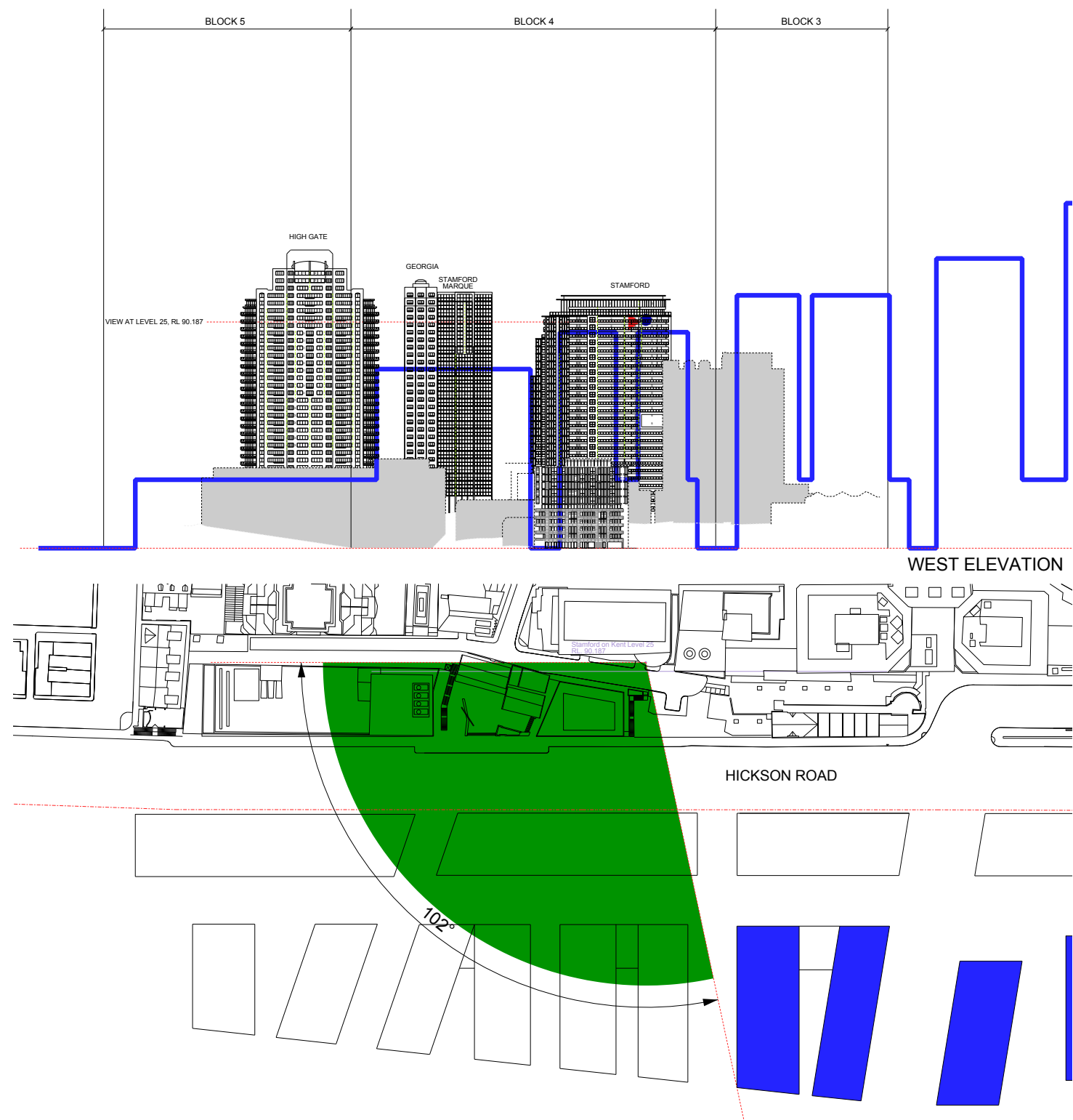
# Stamford on Kent - Upper Levels

Approved Concept Plan (As Modified) Option 2 (ACP2) Indicative Design  
Level 25 - RL90.187

## Georgia - Views at Level 25 at RL90.187

- Approved Concept Plan (as modified) Option 2 Indicative Design  
Existing uninterrupted view angle 102°
- Proposed Concept Plan Amendment (Mod 4) Indicative  
Uninterrupted view angle 66°

Uninterrupted view greater than 54° is maintained



TOTAL VIEW ANGLE: 102°

OBLIQUE VIEW OF THE APPROVED CONCEPT PLAN (AS MODIFIED)

APPROVED CONCEPT PLAN (AS MODIFIED) BUILDING FOOTPRINT

X=333571.323  
Y=6251596.302  
Far Western Point  
on Eastern Boundary

OBLIQUE VIEWS ANALYSIS  
APPROVED CONCEPT PLAN (AS MODIFIED) OPTION 2 (ACP2)  
STAMFORD ON KENT LEVEL 25 RL 90.187

PLAN