

Proposed Development Boundary

Bore

Test Pit

Filling over Residual - Narrabeen Group

Minor Filling over Residual - Moon Island Beach

Alluvium


Residual - Narrabeen Group

Filling over Alluvium

Alluvial with High Acid Sulphate Soil Potential

Filling over Alluvial with High Acid Sulphate Soil Potential

The map displays an aerial view of Catherine Hill Bay with various geological and development features. A thick blue line outlines the 'Proposed Development Boundary'. Two main areas are highlighted: 'Area A' in the upper right and 'Area B' in the lower left. Area A is primarily filled with pink hatching, indicating 'Filling over Alluvial with High Acid Sulphate Soil Potential'. Area B is filled with green hatching, indicating 'Residual - Narrabeen Group'. Other areas include yellow hatching for 'Alluvium' and red hatching for 'Filling over Residual - Narrabeen Group'. Numerous test pits are marked with black squares and labeled (Pit 1 to Pit 44). Two bores are marked with black circles and labeled (Bore 103, Bore 107). A road labeled 'FORMER HAUL ROAD' runs through the center. A building labeled 'EXISTING BUILDING WITH FRIBR' is located near the center. A 'SUBSTATION' is also marked. The map includes a legend in the top left, a north arrow in the top right, and a title block in the bottom right.



**Douglas Partners**

Geotechnics . Environment . Groundwater

TITLE:

TEST LOCATION PLAN and  
SURFACE GEOLOGY  
PROPOSED RESIDENTIAL DEVELOPMENT  
CATHERINE HILL BAY

CLIENT: Coal & Allied Industries Ltd

DRAWN BY: PWW

SCALE: 1:4000

PROJECT: 39662.06

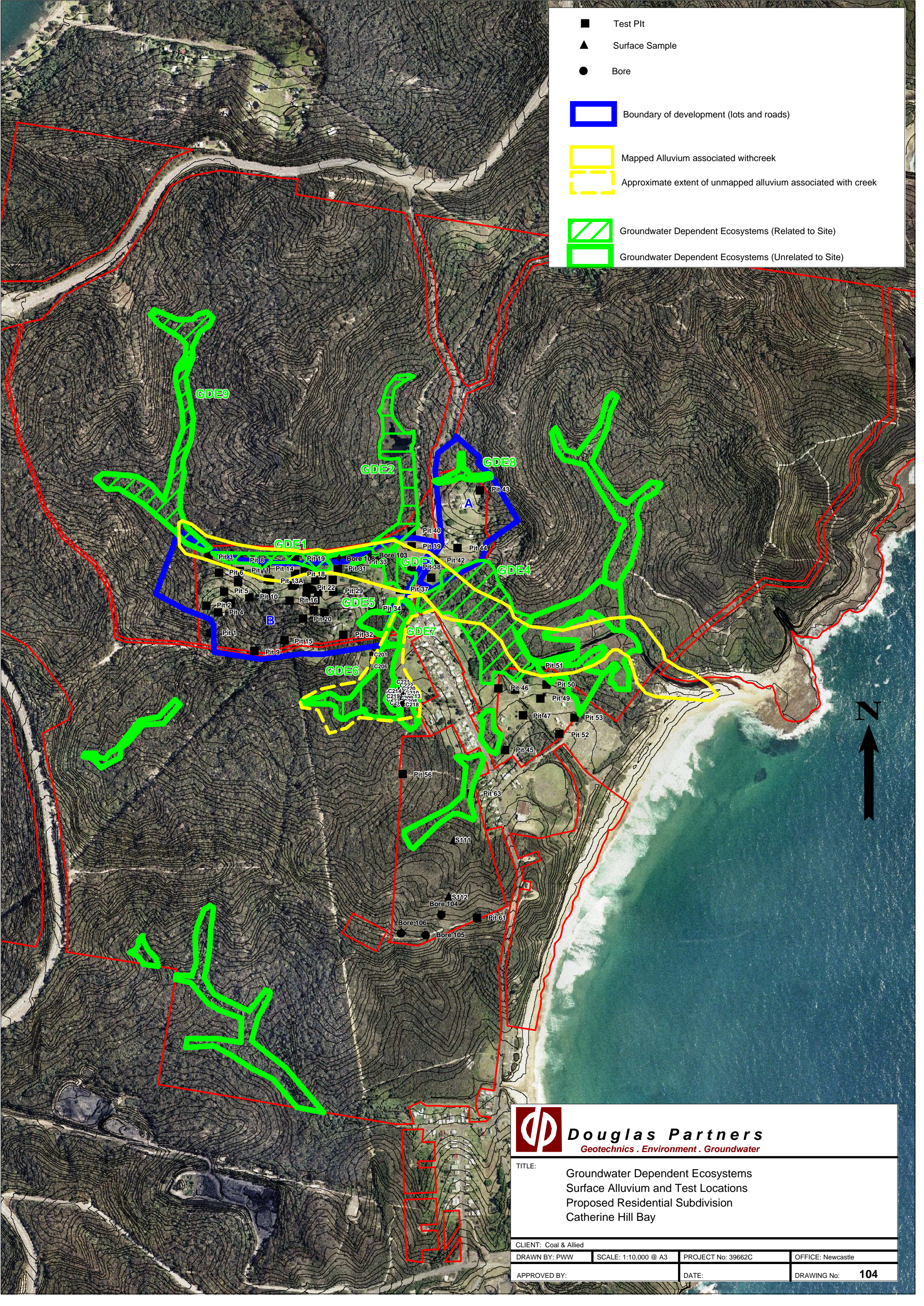
OFFICE: NEWCASTLE

APPROVED BY:


DATE:

DRAWING No: 4





- Test Pit
- ▲ Surface Sample
- Bore
- Boundary of development (lots and roads)
- Mapped Alluvium associated with creek
- Approximate extent of unmapped alluvium associated with creek
- Groundwater Dependent Ecosystems (Related to Site)
- Groundwater Dependent Ecosystems (Unrelated to Site)



**Douglas Partners**  
*Geotechnics . Environment . Groundwater*

TITLE:

Groundwater Dependent Ecosystems  
Surface Alluvium and Test Locations  
Proposed Residential Subdivision  
Catherine Hill Bay

CLIENT: Coal & Allied			
DRAWN BY: PWW	SCALE: 1:10,000 @ A3	PROJECT No: 39662C	OFFICE: Newcastle
APPROVED BY:	DATE:	DRAWING No: <b>104</b>	