



Edmondson Park Conservation Agreement Review

10SYDPLA-0024

Prepared for
Landcom

November 2010

DOCUMENT TRACKING

ITEM	DETAIL
Project Name	Edmondson Park Conservation Agreement Review
Project Number	10SYDPLA-0024
File location	
Prepared by	Robert Mezzatesta/Steven House
Approved by	Steven House
Status	FINAL
Version Number	4
Last saved on	19 th November 2010

ACKNOWLEDGEMENTS

This document has been prepared by Eco Logical Australia Pty Ltd with support from Landcom and J. Wyndham Prince.

Disclaimer

This document may only be used for the purpose for which it was commissioned and in accordance with the contract between Eco Logical Australia Pty Ltd and J Wyndham Prince and Landcom. The scope of services was defined in consultation with J Wyndham Prince and Landcom, by time and budgetary constraints imposed by the client, and the availability of reports and other data on the subject area. Changes to available information, legislation and schedules are made on an ongoing basis and readers should obtain up to date information.

Eco Logical Australia Pty Ltd accepts no liability or responsibility whatsoever for or in respect of any use of or reliance upon this report and its supporting material by any third party. Information provided is not intended to be a substitute for site specific assessment or legal advice in relation to any matter. Unauthorised use of this report in any form is prohibited.

Contents

1	Background.....	1
2	Proposed Actions.....	4
3	Assessment of Proposed Actions on Existing Conservation Agreement	6
4	Conclusion	7

List of Figures

Figure 1. Existing Map 3 from Conservation Agreement 3

Figure 2. Proposed Actions and Modifications 5

Figure 3. Proposed Revised Map 3 of the Conservation Agreement..... 8

1 Background

The Commonwealth and the State of NSW entered into a Conservation Agreement (CA) under the *Environment Protection and Biodiversity Conservation Act, 1999 cth* (EPBC Act) for development of Edmondson Park in 2009. This agreement is a form of approval under the EPBC Act and is a legally binding document.

The CA recognises that development of the site will result in impacts to Matters of National Environmental Significance, namely:

- Cumberland Plain Woodland (CPW)
- Swift Parrot
- Grey-headed Flying-fox

To provide for positive long term environmental outcomes for biodiversity, under the CA the state is required to carry out the following actions:

1. Establishment and management of a Regional Park including undertaking control measures for existing areas of African Olive;
2. Sympathetic management of Public Open Space that contained CPW; and
3. An environmental offset outside the Precinct to offset unavoidable impacts.

The location of actions 1 and 2 are indicated in Map 3 of the CA (included as Figure 1 in this report).

Within the Regional Park the following outcomes are required:

- Protection of approximately 79 Ha of CPW
- Protection of approximately 31 Ha of Sydney Coastal Riverflat Forest
- Rehabilitation and Restoration of approximately 9 Ha of cleared land to CPW
- Additional management requirement as identified by the NSW National Parks and Wildlife Act, 1974

Within the Public Open Space network, areas identified as 'Public Open Space for Conservation' (as per Map 3 in the CA) require the following additional management actions;

- The retention of trees;
- Maintenance of the existing native understorey; and
- Locating passive and active facilities cognisant of existing CPW values.

The environmental offset requires;

- Protection and management of 72 Ha of CPW in secure conservation areas

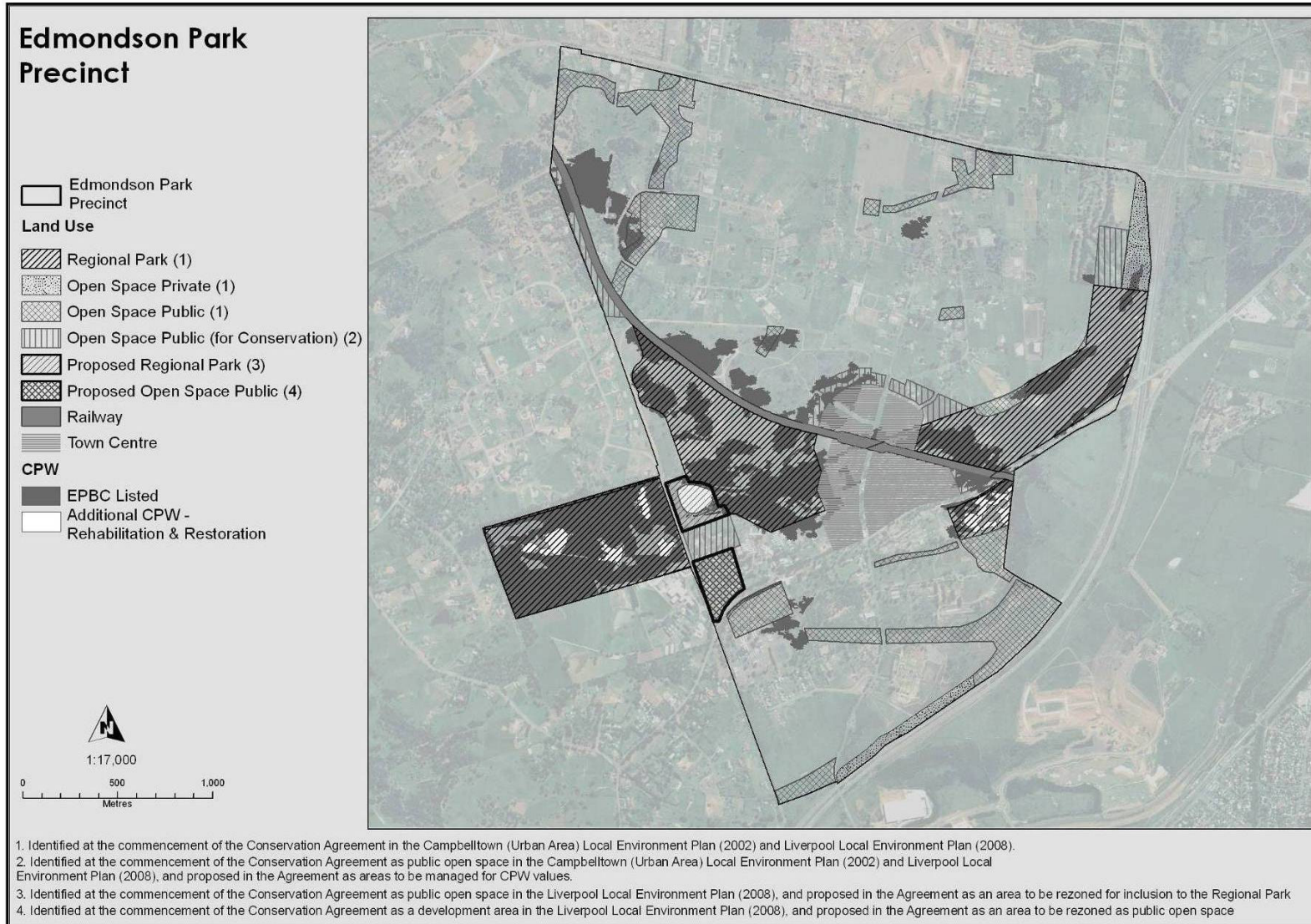


Figure 1. Existing Map 3 from Conservation Agreement

2 Proposed Actions

Landcom (the NSW State Government developer) is seeking a minor amendment to the Conservation Agreement in the form of a map change.

Landcom seeks the following modifications:

1. Regional Park boundary adjustment (equal area swap). This would require modification of Map 3 in the Conservation Agreement.
2. Temporary disturbance of an area of Regional Park for the purposes of constructing a sewer main. No modification to Conservation Agreement required.
3. Modifications to areas of public open space (these areas are not identified as 'Public Open Space for Conservation'). This would require modification of Map 3 in the Conservation Agreement.

The location of the proposed modifications is identified in Figure 2, below.

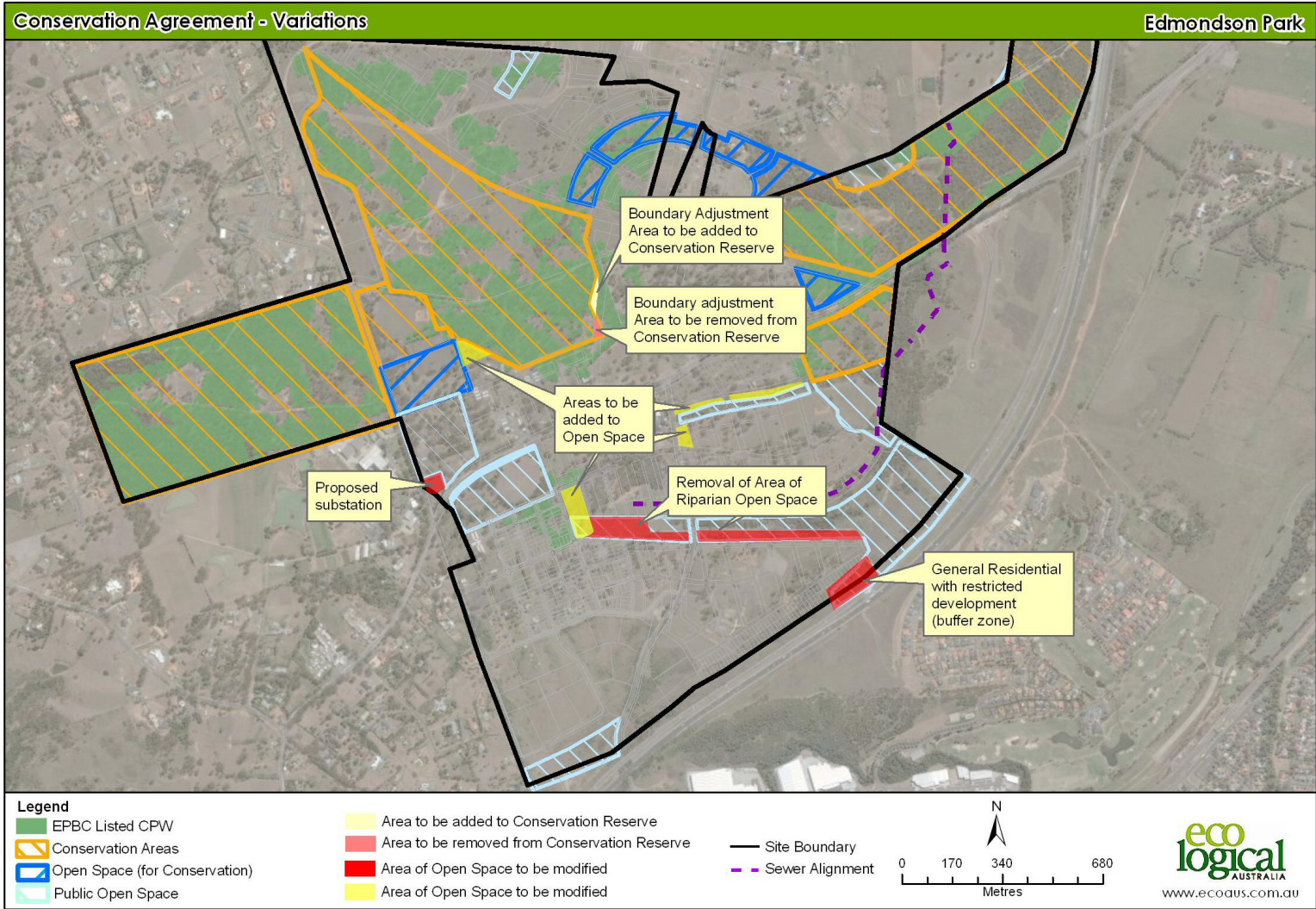


Figure 2. Proposed Actions and Modifications

3 Assessment of Proposed Actions on Existing Conservation Agreement

CA Action	Regional Park Adjustment	Sewer Main Construction	Open Space Modification
1. Regional Park	The proposed modification will result in the loss of 1247 m ² of derived native grasslands that would be classified as class 'C' according to the definition of the <i>Cumberland Plain Woodlands Critically Endangered Ecological Community description (DEWHA, 2009)</i> . This loss would be ameliorated by the inclusion of 1650 m ² of high quality habitat 'A' class vegetation within the Regional Park.	This will result in the disturbance of an area less than 10 metres in width through the Regional Park, primarily through an area of Sydney Coastal Riverflat Forest. This area would be fully revegetated following construction of the sewer main.	No Change
2. Management of 'Public Open Space for Conservation'	No Change	No Change	No Change
3. Offsite Offset	No Change	No Change	No Change

4 Conclusion

The proposed changes have been designed in a way to have minimal environmental impacts and are not considered to be materially different from the CA. Importantly, the 'Biodiversity Management Actions' identified in Chapter 3 of the CA will all be undertaken and no changes are required to this element of the CA.

The Regional Park boundary adjustment will provide an improved management edge and will avoid having urban development backing on to the park boundary. Additionally lesser value 'C class' CPW will be substituted for 'A class' CPW, this will result in an improved environmental outcome for the site.

The proposed Open Space revision does not impact on any requirements of the Conservation Agreement, Map 3 should however be modified to reflect this change.

Whilst the proposed sewer alignment will have a temporary impact as the level of impact is minor and will be fully rehabilitated following construction the long-term impact is considered to be negligible.

The only required change to the CA is to modify Map 3 in relation to the Regional Park boundary adjustment and revised approach to Open Space. The proposed revised Map 3 is shown below in Figure 3.

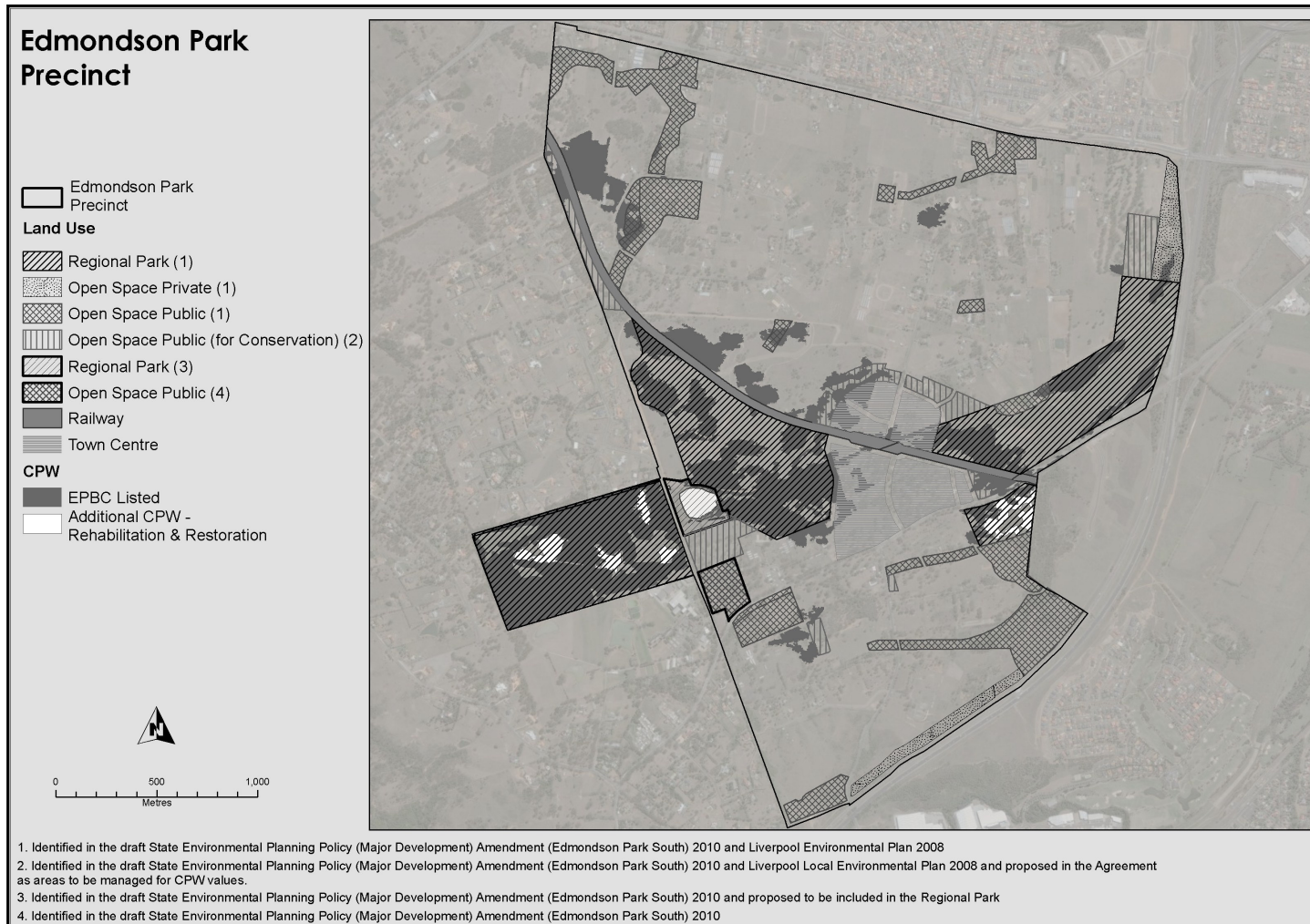


Figure 3. Proposed Revised Map 3 of the Conservation Agreement