

Note * Refer to streetscape planting plan



6.0 - INDICATIVE MATERIALS PALETTE

North Penrith Village precinct is widely regarded as a unique setting within the greater urban fabric. In determining the sites ‘Genus Loci’ the landscape design principles that utilise play - colour, form and materials will be celebrated to create North Penrith Village with a sense of place which is wholly in keeping with Landcom objectives and guidelines and conducive to the wider community.

The materials to be selected will be carefully considered against the site characteristics and needs of the spaces created. The materials palette must reflect a special sense of identity which is unique to North Penrith Village.

It is important that the landscape design philosophy reflects, wherever possible, this uniqueness. It is also very important that design solutions need to have a sense of both the formal that is in keeping with the village centre and the parkland character as seen throughout the main body of the development site and the more natural and informal celebrating the remaining areas of remnant endangered forest communities around Thornton Hall to the east.

Drawing together a cohesive design strategy from this juxtaposition of design styles calls upon a more sensitive and understated treatment. It is not simply a case of whatever is deemed appropriate for whichever location but rather an cohesion of site specific materials used in similar but distinct ways. In natural areas materials need to be carefully selected to harmonise with their surroundings and the materials utilised throughout the remainder of the development.

- Smiths Paddock and surrounds will incorporate the traditional materials normally associated with the heritage of the sporting oval and will include an interpretive timber pailing fence. Contemporary and traditional materials such as lightly exposed and exposed concrete along with Porphyry setts will interconnect seamlessly with galvanised mesh and timber boardwalks over the ornamental rain gardens. Rubber soft fall and mulch will be utilised within the playground spaces. The large plaza spaces for the Public Art Work and for the Community Facilities forecourt and building surrounds will be enhanced with higher quality materials such as exfoliated granite pavers and large format concrete pavers respectively. The interactive pop jet and foam jet plaza’s will incorporate subtle but playful patterns made from coloured concrete and mosaic tile inlays.

- Belmore Park will comprise of mainly contemporary materials ranging from cast in situ concrete pavements either lightly exposed or exposed, concrete/stone banding, block work walls clad with red ceramic tiles, option for cor-ten panels and stainless steel. These contemporary material will be offset with the incorporation of a cobble stone plaza of porphyry setts or the more uniform granite pavers. By utilising these more raw materials the design will help to enhance the strong village character which is projected through the use of deciduous street tree planting while being located within a contemporary development.

Indeed, the components chosen for use throughout the landscape theming process at North Penrith Village comprise, where possible, local materials such as stone, timber (limited due to maintenance requirements), concrete and steel. These shall be used in a variety of ways to reinforce the character of the park or space whilst being practical, low maintenance and cost-effective.





The stone shall be predominantly sandstone which can be laid in either random or coursed linear fashion. Concrete works will be clean lined and pale in colour to denote contrast. Pavers will be either bluestone, granite, concrete and porous in function where possible. The timber, where feasible, should be recycled hardwood that turns a silver colour during the weathering process. The steel, depending upon its application, shall be stainless, galvanised or painted. Cor-ten steel can also be used for certain major components through the parks. It is intended that these materials in their various forms will provide a unity between different landscape components.

There are also opportunities for bright, idiosyncratic elements such as red poly carbonate or red ceramic tile cladding to walls. This will provide an interesting contrast when used in conjunction with the concrete walls or the more natural stonework.



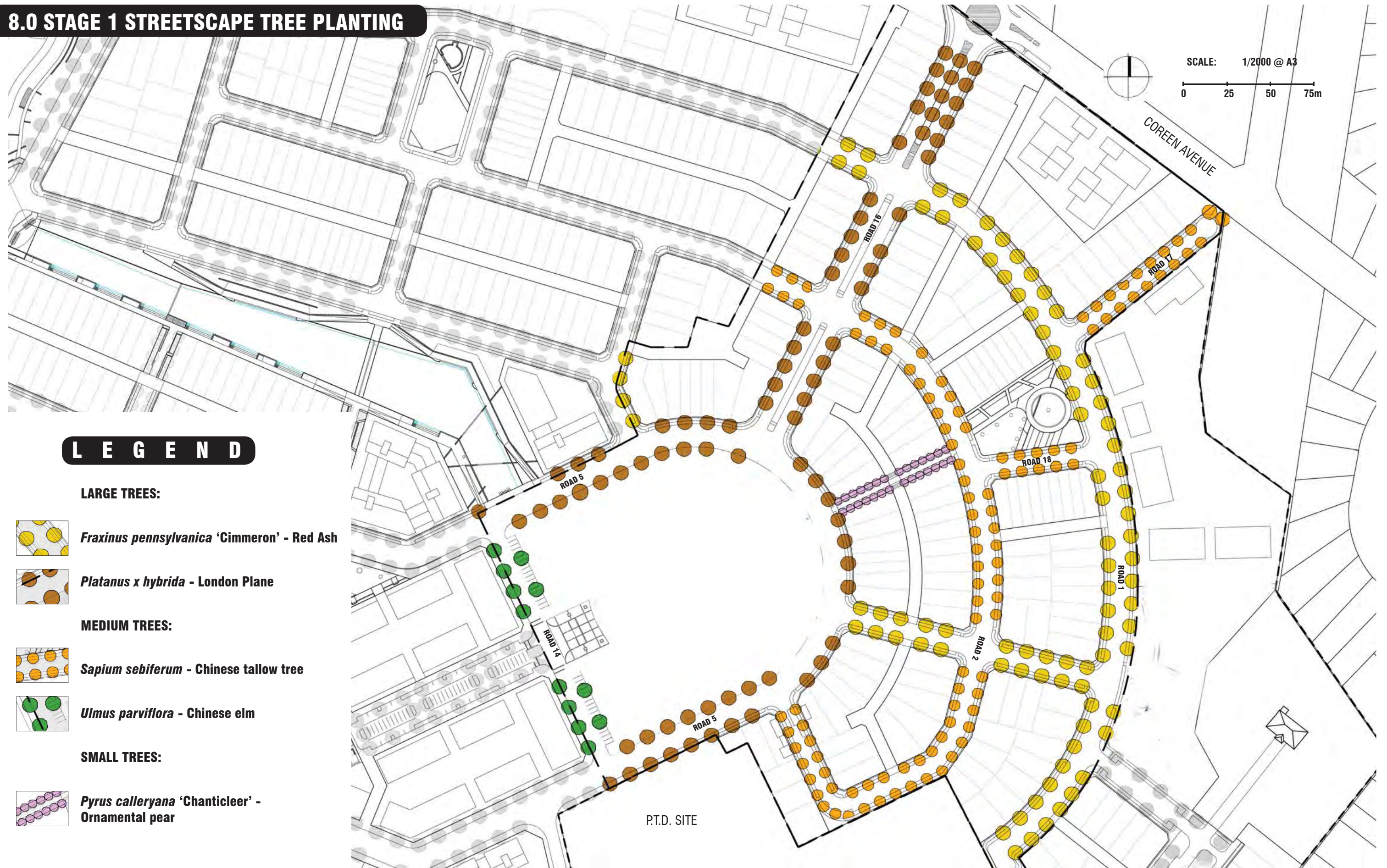
7.0 - INDICATIVE FURNITURE PALETTE

The site furniture palette will reflect the design intent of each individual precinct.
Design principles will be:

- 1. Furniture palette to be robust and low maintenance.
- 2. Furniture palette to be modern in design.
- 3. Possible incorporation of public art into components.



8.0 STAGE 1 STREETSCAPE TREE PLANTING



9.0 STAGE 1 - INDICATIVE PLANTING PALETTE

There will be a predominant focus on the appropriate mix of formal and native plant species used through out the site. Overall, a leafy, deciduous character to the streetscapes will aid in the enforcement of a European styled village character. Exotic species will be used in certain specific locations -

- In Streetscapes where Penrith City Council will not accept larger natives;
- Where accent planting is required such as at the entry precincts, pedestrian crossing points and focal points within parks and civic spaces.

A structured approach to the planting design will occur to the more formal open spaces and neighbourhood parks, internal streetscapes and at the main entrances off Coreen Avenue. Open spaces and Public Domain footpaths will be bordered by a hierarchy of formal exotic species and native grasses and ground covers where appropriate to provide a more structured, defined look.

Park Trees



Brachychiton populneus
Kurrajong



Eucalyptus melliodora
Yellow Box



Fraxinus oxycarpa
'Raywood' Claret Ash



Magnolia grandiflora
Bull Bay



Pistacia chinensis
Chinese Pistacia



Populus simonii
Chinese Poplar



Pyrus ussuriensis
Manchurian Pear



Quercus palustris
Pin Oak



Tristaniaopsis laurina
'Luscious' Water Gum



Waterhousea floribunda
Weeping Lilly Pilly

Shrubs



Acmena smithii
'Hedgemaster'



Alternanthera dentata
Ruby Leaf Alternanthera



Buxus microphylla
Japanese Box



Callistemon citrinus
'Anzac'
Dwarf Bottlebrush



Grevillea 'Honey Gem'
Grevillea



Gardenia augusta 'Florida'
Gardenia



Lavandula denata
French Lavender



Murraya paniculata
Orange Jessamine



Viburnum odoratissimum
Sweet Viburnum



Westringia 'Wynyabbie Gem'
Coastal Rosemary

Grasses & Ground Covers



Beschorneria yuccoides
Mexican Lily



Dianella 'Little Jess'
Paroo Lily



Dietes grandiflora
Wild Iris



Hymenocallis littoralis
Swap Lily



Juniperus conferta
Shore Juniper



Liriope muscari 'Evergreen Giant'
Turf Lily



Lomandra 'Tanika'
Mat Rush



Pennisetum alopecuroides
Swamp Foxtail



Poa labillardieri 'Eskdale'
Tussock Grass



Trachelospermum jasminoides
Star Jasmine



Viola hederacea

Street Trees



Fraxinus pennsylvanica
'Cimmzam' Cimmeron
Red Ash



Platanus x hybrida
London Plane



Pyrus calleryana
'Chanticleer'
Ornamental Pear



Sapium sebiferum
Chinese Tallow



Ulmus parvifolia
Chinese Elm



10.0 STAGE 1 INDICATIVE PLANTING SCHEDULE

INDICATIVE STREET TREE SCHEDULE:

SYM	BOTANICAL NAME	COMMON NAME	HEIGHT	SPACING	POT SIZE
COREEN AVENUE ENTRY / BOULEVARDE					
	Plantanus x hybrda	London Plane	20m	12m	200L
COLLECTOR (BUS ROUTE) & MAIN STREET					
	Plantanus x hybrda	London Plane	20m	15m	200L
SECONDARY ENTRY COLLECTOR STREETS					
	Plantanus x hybrda	London Plane	20m	15m	200L
COLLECTOR & LOCAL STREETS					
	Fraxinus pennsylvanica 'Cimarron'	Green Ash	15m	As Shown	100L
	Ulmus parvifolia	Chinese Elm	15m	As Shown	100L
LOCAL & MINOR LOCAL STREETS					
	Saplum serblferum	Chlnese Tallow	7m	6m	100L
	Pyrus ussuriensis	Manchurian Pear	9m	6m	100L
THROUGH SITE LINK					
	Pyrus calleryana 'Chanticleer'	Ornamental Pear	7m	6m	100L

PLANTING SCHEDULE:

SMITHS PADDOCK (OPEN SPACE 1)					
SYM	BOTANICAL NAME	COMMON NAME	HEIGHT	SPACING	POT SIZE
DECIDUOUS TREES					
	Fraxinus oxycarpa 'Raywood'	Claret Ash	15m	As Shown	200L
	Pistacia chinensis	Chinese Pistachia	15m	As Shown	200L
	Platanus x hybrda	London Plane	25m	As Shown	400L
	Pyrus calleryana 'Chanticleer'	Ornamental Pear	7m	As Shown	200L
	Pyrus calleryana 'Bradford'	Ornamental Pear	7m	As Shown	200L
	Sapium serbiferum	Chinese Tallowood	12m	As Shown	100L
	Ulmus parvifolia	Chinese Elm	20m	As Shown	400L
EVERGREEN TREES					
	Brachychlton populneus	Kurrajong	20m	As Shown	100L
	Cupaniopsis anacardioides	Tuckeroo	10m	As Shown	100L
	Eucalyptus melliodora #	Yellow Box	25m	As Shown	100L
	Syncarpia glomulifera	Turpentine	25m	As Shown	100L
	Tristaniopsis laurina 'Luscious'	Water Gum	12m	As Shown	75L
	Waterhousia floribunda	Weeping Lilly Pilly	15m	As Shown	100L
SHRUBS					
	Acmena smithii 'Hedgemaster'	Lilly Pilly	1m	500mm	25L
	Alternanthera dentata	Ruby Leaf Alternanthera	1.5m	300mm	200mm
	Buxus microphylla	Japanese Box	1.5m	300mm	200mm
	Callistemon citrinus 'Anzac'	Drawf Bottlebrush	1.0m	4m2	5L
	Callistemon viminalis 'Little John'	Drawf Bottlebrush	1.0m	4m2	5L
	Grevillea 'Honey Gem'	Grevillea	3m	1m2	25L
	Gardenia augusta 'Florida'	Gardenia	1.5m	3m2	25L
	Lavandula dentata	French Lavenda	1m	300mm	5L
	Murraya paniculata	Orange Jessamine	3m	750mm	25L
	Rosmarinus officinalis	Rosemary	1.5m	500mm	25L
	Syzygium sp.	Lilly Pilly	3m	1.0m	25L
	Viburnum odoratisslmum	Sweet Viburnum	6m	500mm	25L
	Westringia 'Wynyabbie Gem'	Coastal Rosemary	1m	500mm	25L
GRASSES & GROUND COVERS					
	Beschomeria yuccoides	Mexican Lily	1.0m	3m2	200mm
	Dianella 'Breeze'	Paroo Lily	0.3m	7/m²	75mm Tube
	Dianella 'Little Rev'	Paroo Lily	0.3m	9/m²	75mm Tube
	Dianella 'Little Jess'	Paroo Lily	0.4m	7/m²	75mm Tube
	Dietes grandiflora	Wild Iris	0.6m	7/m²	75mm Tube
	'Hymenocallis littoralis'	Swamp Lilly	1.5m	4m2	5L
	Imperata cylindrica	Blady Grass	0.6m	7/m²	75mm Tube
	Juniperus conferta	Shore Juniper	0.3m	4m2	200mm
	Liriope muscari 'Evergreen Giant'	Turf Lily	0.7m	5/m²	150mm
	Lomandra 'Tanika'	Mat Rush	0.7m	7/m²	75mm Tube
	Lomandra 'Katrinus'	Mat Rush	0.7m	7/m²	75mm Tube
	Pennisetum alopecuroides 'Nafray'	Swamp Foxtail	0.7m	7/m²	75mm Tube
	Poa labillardieri 'Eskdale'	Tussock Grass	0.6m	9/m²	75mm Tube
	Trachelospermum jasminoides	Star Jasmine	0.6m	5/m²	150m
	Viola hederacea	Native Violet	0.2m	5/m²	100mm

- Denotes that this stock may need to be provenance stock sourced from the local area if not commercially available.

ORNAMENTAL RAIN GARDENS					
TREES					
	Melaleuca quinquenervia	Broad Leaved Paperbark	15m	As Shown	75L
	Melaleuca styphelioides	Prickly-Leaved Paperbark	12m	As Shown	75L
SHRUBS					
	Melaleuca thymifolia	Honey Myrtle	0.5m	5m2	150mm
SEDGES & RUSHES					
	Carex appressa	Tall Sedge	0.6m	5/m²	75mm Tube
	Isolepsis nodosa	Club Rush	0.7m	5/m²	75mm Tube
	Juncus ussatus	Common Rush	0.7m	7/m²	75mm Tube
	Lomandra longifolia 'Katrinus'	Mat Rush	0.7m	7/m²	75mm Tube

BELMORE GREEN (OPEN SPACE 3)					
SYM	BOTANICAL NAME	COMMON NAME	HEIGHT	SPACING	POT SIZE
DECIDUOUS TREES					
	Fraxinus oxycarpa 'Raywood'	Claret Ash	15m	As Shown	200L
	Largerstoemia indica	Crepe Myrtle	12m	As Shown	100L
	Magnolia x soulangeana	Tulip Magnolia	7m	As Shown	100L
	Populus simonii	Chinese Poplar	20m	As Shown	800L
	Pyrus calleryana 'Chanticleer'	Ornamental Pear	7m	As Shown	100L
	Pyrus calleryana 'Bradford'	Ornamental Pear	7m	As Shown	100L
	Quercus palustris	Pin Oak	20m	As Shown	400L
	Sapium serbiferum	Chinese Tallowood	12m	As Shown	100L
EVERGREEN TREES					
	Brachychiton populneus	Kurrajong	20m	As Shown	100L
	Cupaniopsis anacardioides	Tuckeroo	10m	As Shown	100L
	Hymenosporum flavum	Native Frangipani	10m	As Shown	75L
	Magnolia grandiflora	Bull Bay Magnolia	10m	As Shown	75L
	Syncarpia glomulifera	Turpentine	25m	As Shown	100L
	Tristanlopsis laurina 'Luscious'	Water Gum	12m	As Shown	75L
	Waterhousia floribunda	Weeping Lilly Pilly	15m	As Shown	100L
SHRUBS					
	Acmena smithii 'Hedgemaster'	Lilly Pilly	1m	500mm	25L
	Alternanthera dentata	Ruby Leaf Alternanthera	1.5m	300mm	200mm
	Buxus microphylla	Japanese Box	1.5m	300mm	200mm
	Callistemon citrinus 'Anzac'	Drawf Bottlebrush	1.0m	4m2	5L
	Callistemon viminalis 'Little John'	Drawf Bottlebrush	1.0m	4m2	5L
	Cordylina sp	Cordylina	3m	4m2	5L
	Dodenaea viscosa 'Purpurea'	Purple Hop Bush	2m	2m2	25L
	Grevillea 'Honey Gem'	Grevillea	3m	1m2	25L
	Gardenia augusta 'Florida'	Gardenia	1.5m	3m2	25L
	Lavandula dentata	French Lavenda	1m	300mm	5L
	Murraya paniculata	Orange Jessamine	3m	750mm	25L
	Philodendron 'Xanadu'	Philodendron	1.2m	500mm	25L
	Rosmarinus officdnalis	Rosemary	1.5m	500mm	25L
	Syzygium sp.	Lilly Pilly	3m	1.0m	25L
	Viburnum odoratissimum	Sweet Viburnum	6m	500mm	25L
	Westringia 'Wynyabbie Gem'	Coastal Rosemary	1m	500mm	25L
GRASSES & GROUND COVERS					
	Beschomeria yuccoides	Mexican Lily	1.0m	3m2	200mm
	Dianella 'Breeze'	Paroo Lily	0.3m	7/m²	75mm Tube
	Dianella 'Little Rev'	Paroo Lily	0.3m	9/m²	75mm Tube
	Dianella 'Little Jess'	Paroo Lily	0.4m	7/m²	75mm Tube
	Dietes grandiflora	Wild Iris	0.6m	7/m²	75mm Tube
	'Hymenocallis littoralis'	Swamp Lilly	1.5m	4m2	5L
	Juniperus conferta	Shore Juniper	0.3m	4m2	200mm
	Liriope muscari 'Evergreen Giant'	Turf Lily	0.7m	5/m²	150mm
	Lomandra 'Tanika'	Mat Rush	0.7m	7/m²	75mm Tube
	Pennisetum alopecuroides 'Nafray'	Swamp Foxtail	0.7m	7/m²	75mm Tube
	Phormium tenax 'Baby Bronze'	New Zealand Flax	0.6m	5/m²	200mm
	Poa labillardieri 'Eskdale'	Tussock Grass	0.6m	9/m²	75mm Tube
	Trachelospermum jasminoides	Star Jasmine	0.6m	5/m²	150m
	Viola hederacea	Native Violet	0.2m	5/m²	100mm



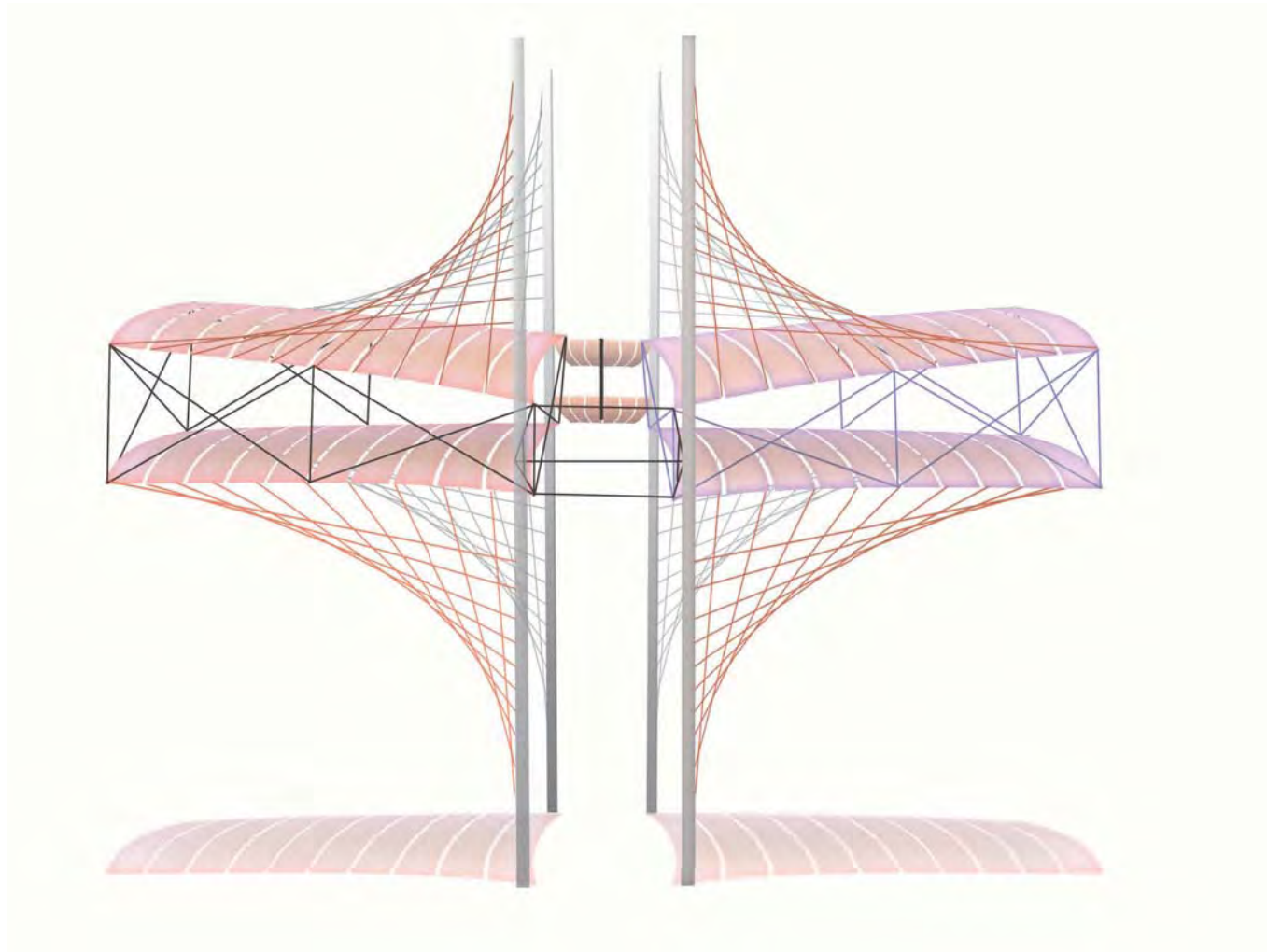
Box Kite Artwork - Smiths Paddock

This concept transforms the fragile structural frame of the Box Kite into a suspended sculpture at the oval entrance. Celebrating the flimsy flight paths of early aviation, the sculpture powerfully marks the sightline towards the railway station.

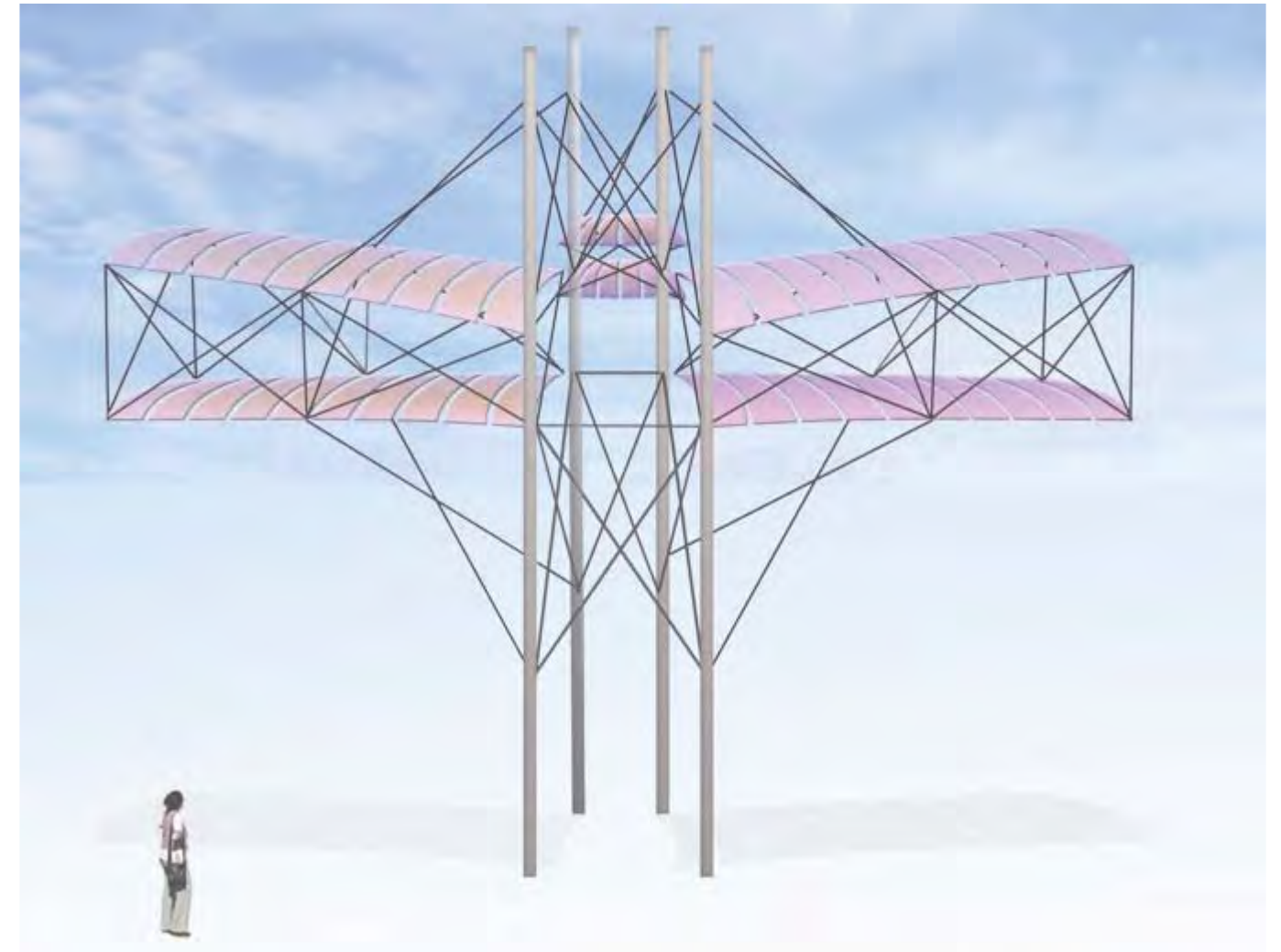
The scale of the sculpture allows people to walk underneath and an array of integrated LED lights will illuminate its skeletal form at night.

The potential material palette includes metal rods, cables and rolled perforated sheets in stainless steel or aluminium.

The maintenance schedule of the artwork is minimal. The LED lights have a 30,000 hour life which is about twenty years before they gradually fade. The perforated sheets require an annual clean using a detergent to prevent surface patina or pollutant build up. The final surface finish which will be electro polishing, anodising or a paint system will be hard and durable.

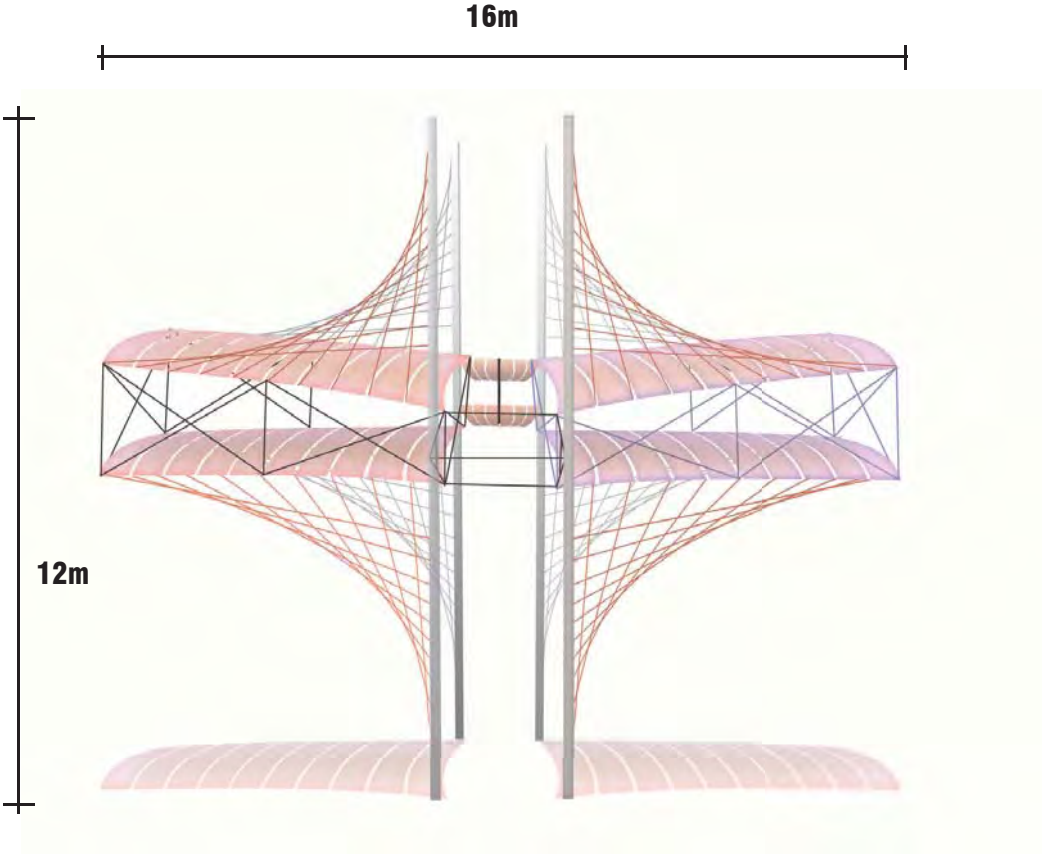


Concept exploration - Option A



Concept exploration - Option B



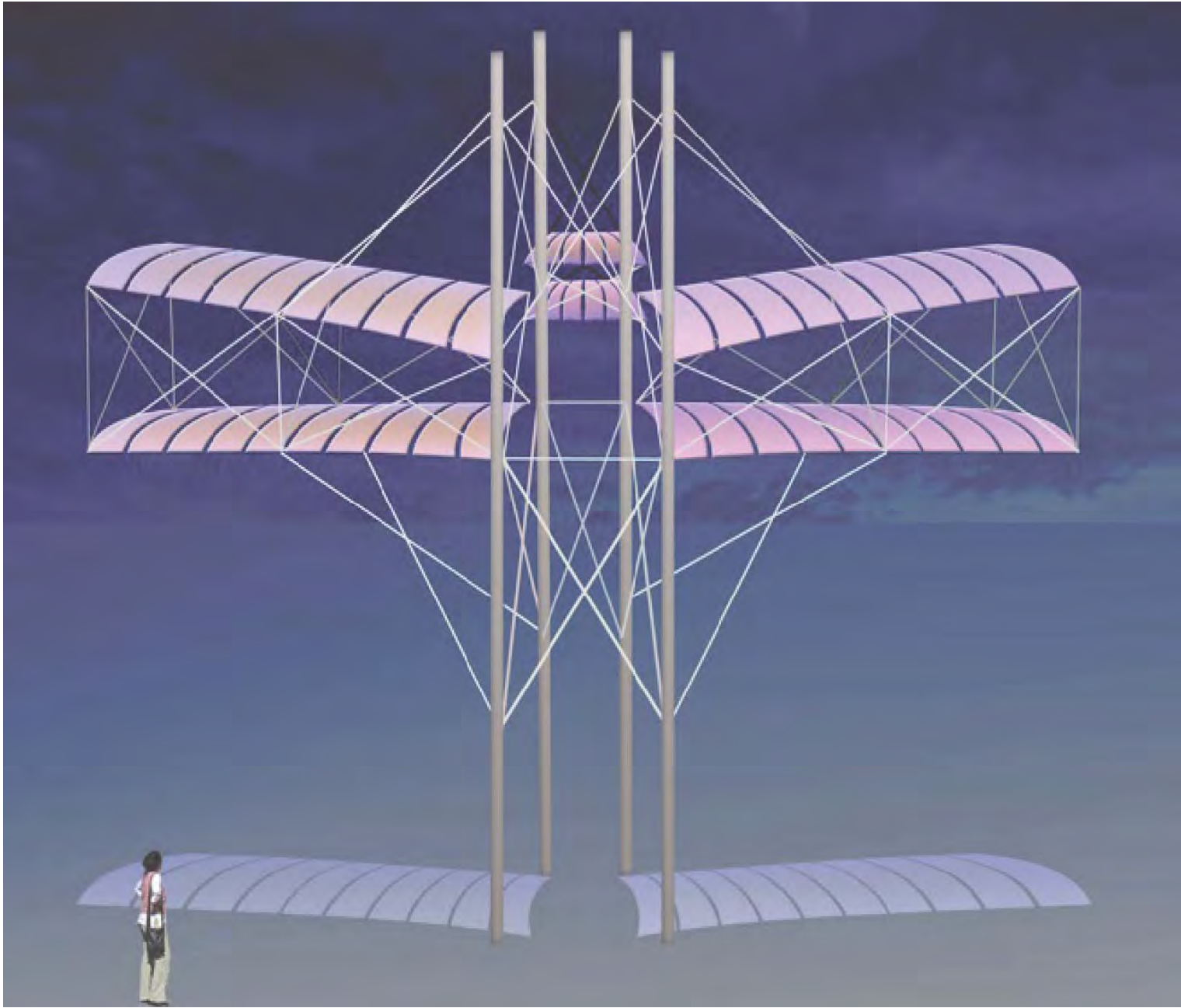
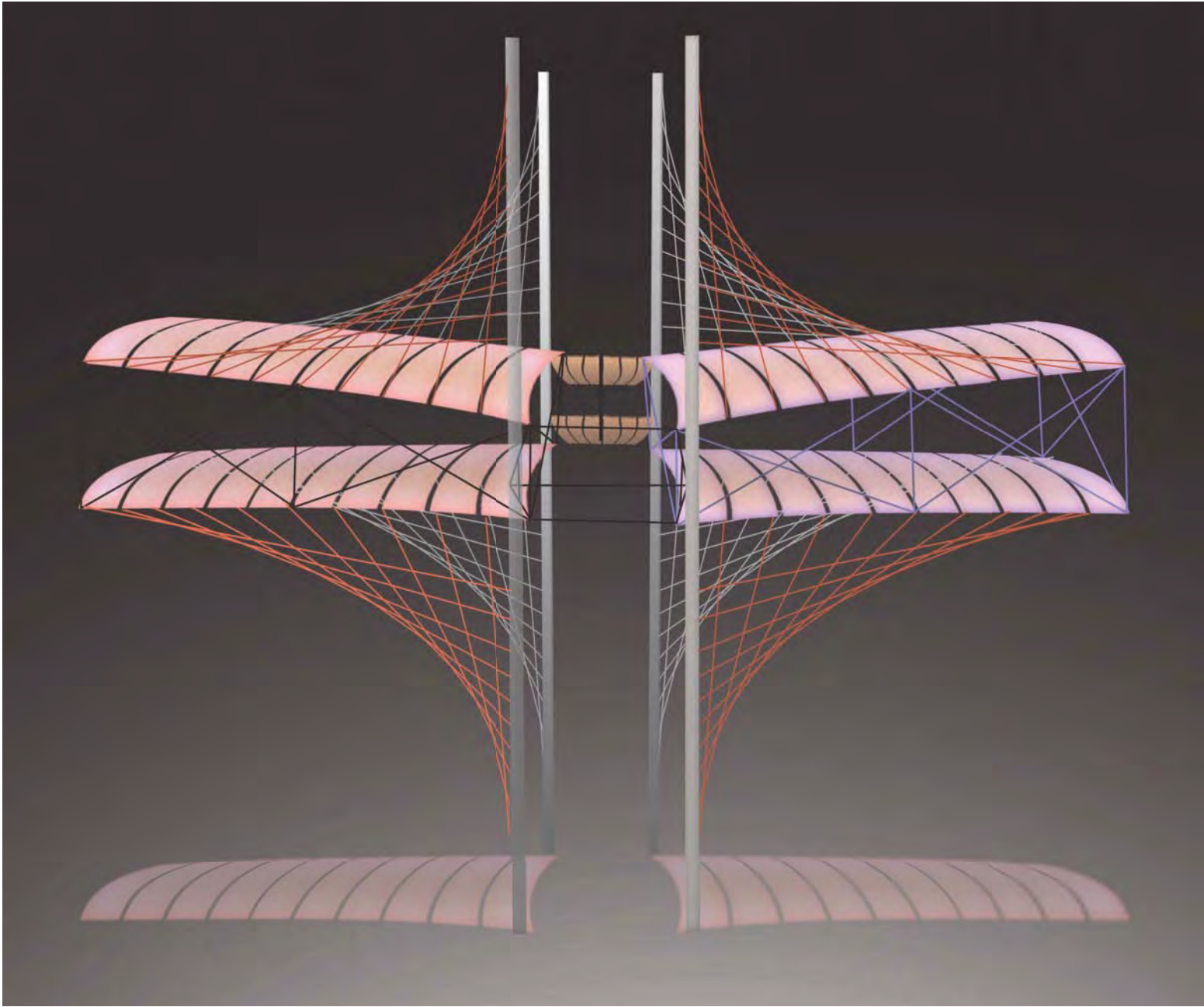


The dimensions of the artwork are sixteen metres in width and twelve metres in height approximately.



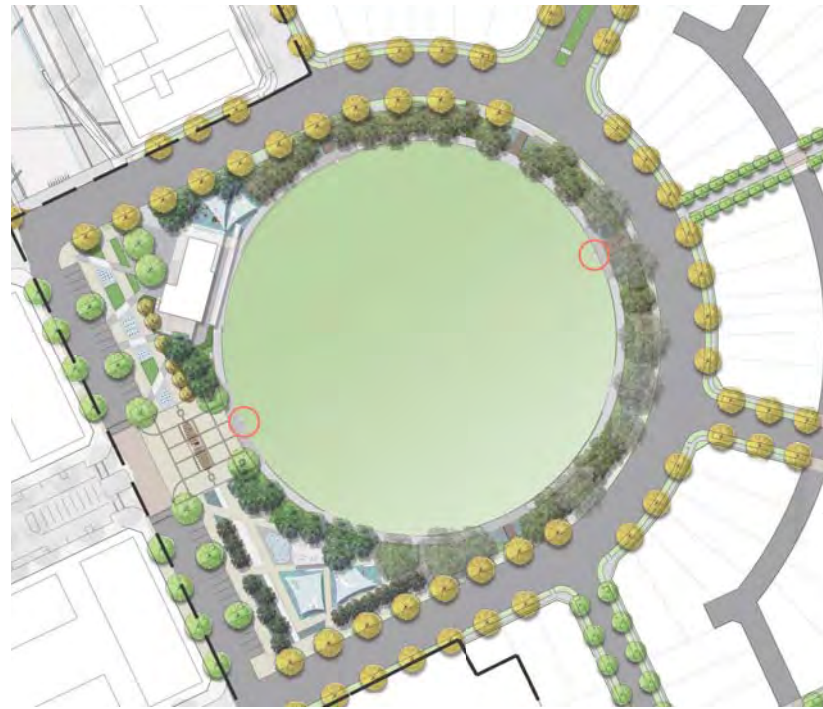
Plan above and elevation below showing the scale and location of the artwork





Montage showing the concept options of the box kite sculpture with integrated lighting. The dimensions of the artwork are sixteen metres in width and twelve metres in height approximately.





Cricket Bat Picket Fence Gate Location Plan

Cricket Bat Picket Entry

The deconstruction of the picket fence at two entry points into the oval punctuates the rhythmic white elements with cricket bats. These bats will be cast or cut elements and are carefully scaled according to the dimensions of the pickets.

As a whimsical response to the famous cricket match which was played on the oval, the artwork integrates with the picket fence seamlessly.

The potential material palette will match the picket fence which is usually aluminium.

The maintenance schedule will be part of the fence cleaning timetable.

The cricket bats' handles and face change incrementally as they approach the entrance.



Cricket Bat Picket Fence Gate Concept



Speedway Text in Pavement

The insertion of text related to the speedway circuit can be applied to a number of locations near the old track. With this integrated design the extent and nature of this popular spectacle is activated within the streetscape of the development.

The content of this text will explore identities, bike and car types, numbers and the relative speed and times of the races. By coming across these vignettes the viewer senses the atmosphere of the races and experiences the scale of the action.

The method of application can include metal inlay, sand blasting and relief. All slip hazard regulations will be met for the text insertion, relief or blasting within the ground plane.

There is no maintenance schedule required apart from annual inspections of the metal or composite inlay.



The use of a motif like the chequered flag defines the content of the text fragment and anticipates the discovery of more speedway allusions further along the former track towards the station



Historic Speedway text location plan

