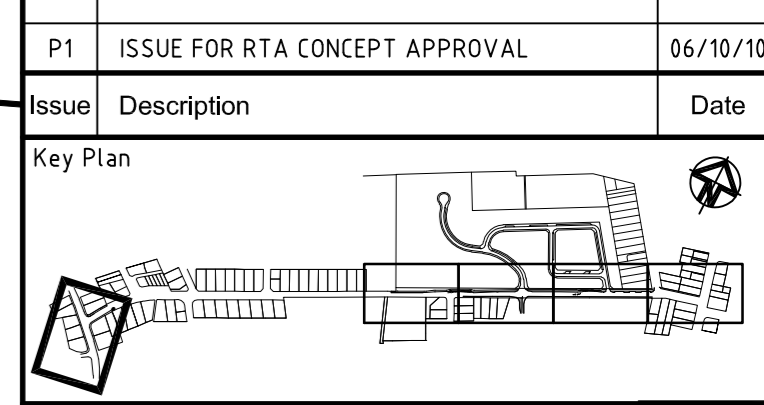


P1	ISSUE FOR RTA CONCEPT APPROVAL	06/10/10
Issue	Description	Date




Status: **PRELIMINARY**
 NOT TO BE USED FOR CONSTRUCTION

A1

Scale	1 : 250	Drawn TS	
		Designed AMc	
Height Datum	AHD	Checked AMc	
Grid		Approved	

File: CE010 STORMWATER DRAINAGE PLAN SHT 1.dwg

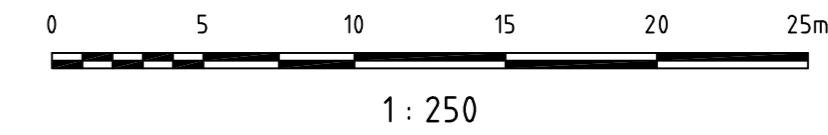
Client
**MERITON APARTMENTS
 PTY LTD**

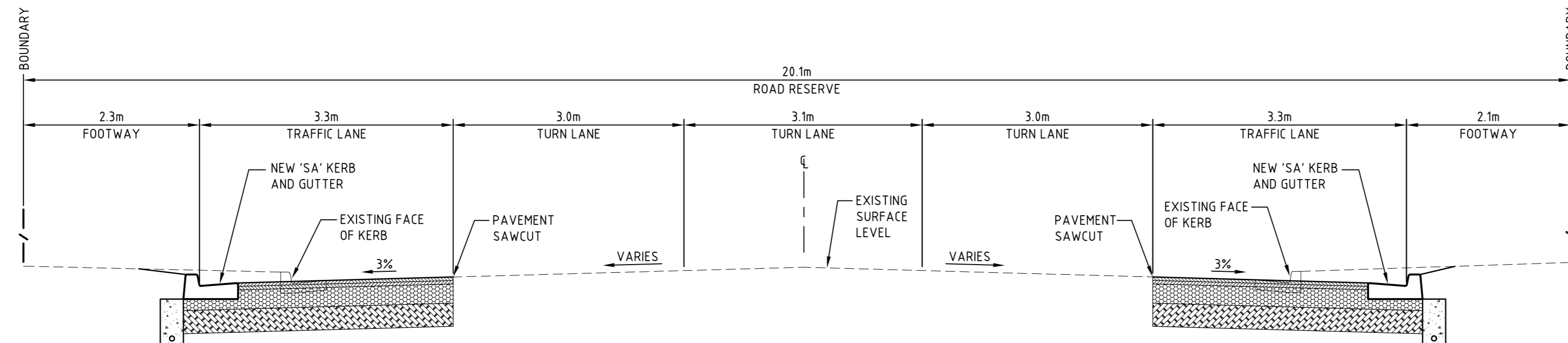
Civil Engineers and Project Managers

 Suite 702, 6A Glen Street
 Milsons Point NSW 2061
 ABN 96 130 882 405
 Tel: 02 8920 2466
 Fax: 02 9922 5102
 www.atl.net.au
 info@atl.net.au

Project
**EPHING PARK
 61 MOBBS LANE
 EPPING**

Title
**EXTERNAL WORKS
 ROADWORKS AND
 STORMWATER DRAINAGE
 PLAN SHEET 1**

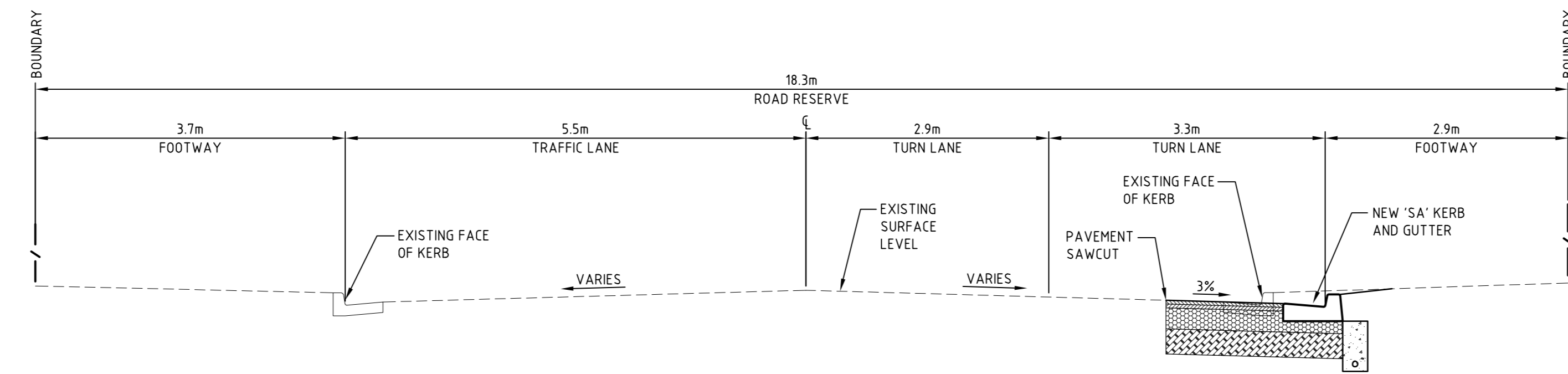
Drawing No. CE010	Project No. 10-26	Issue P1
-----------------------------	-----------------------------	--------------------






MARSDEN ROAD TYPICAL SECTION

SECTION 1
1 : 100



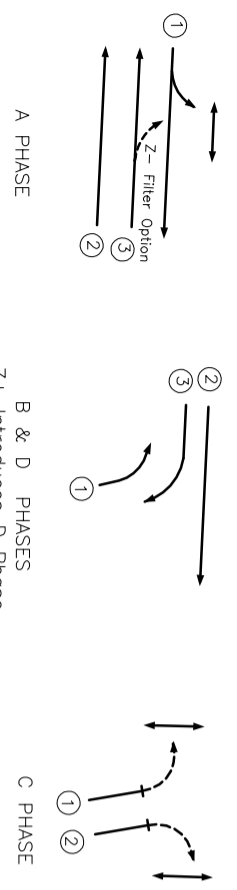
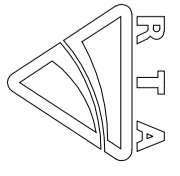
MOBBS LANE TYPICAL SECTION

SECTION 2
1 : 100

P1 ISSUE FOR RTA CONCEPT APPROVAL			06/10/10
Issue	Description	Date	
Key Plan			
Status	PRELIMINARY NOT TO BE USED FOR CONSTRUCTION		A1
Scales	1 : 50	Drawn	MM
		Designed	MM
Height Datum	AHD	Checked	AMc
Grid	MGA	Approved	
File:	CE003 TYP ROAD CROSS SECTIONS.dwg		
Client	MERITON APARTMENTS PTY LTD		
Civil Engineers and Project Managers			
		Suite 702, 6A Glen Street Milsons Point NSW 2061 ABN 96 130 882 405 Tel: 02 8920 2466 Fax: 02 9922 5102 www.atl.net.au info@atl.net.au	
Project	EPPING PARK 61 MOBBS LANE EPPING		
Title	EXTERNAL WORKS TYPICAL ROAD CROSS SECTIONS SHEET 1		
Drawing No.	Project No.	Issue	
CE003	10-26	P1	

DRAWN BY CADD
DO NOT AMEND MANUALLY

DATE IN SERVICE: 00/00/00



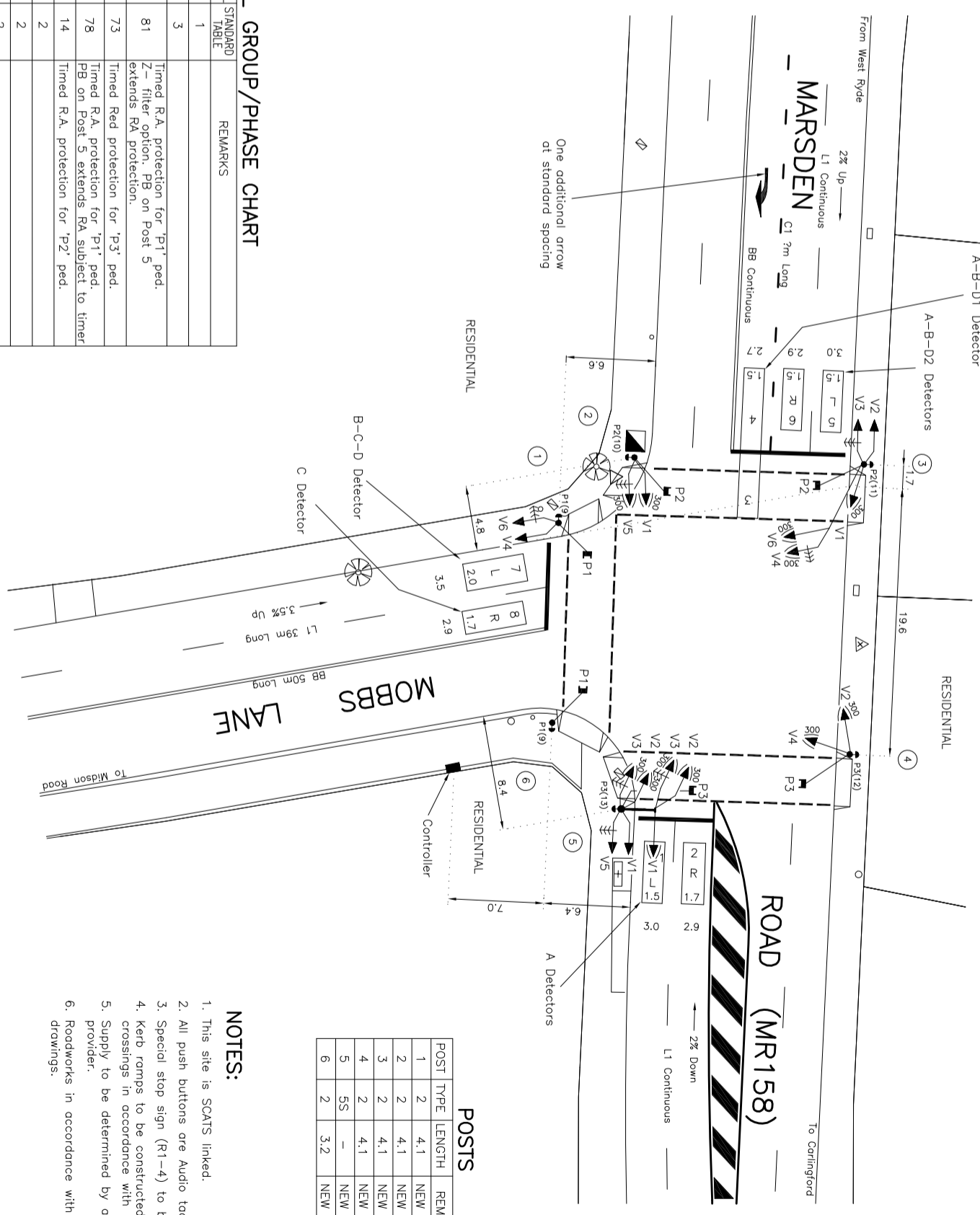
MOVEMENTS

DETECTOR SPECIFICATION

Detector	Specifications
A	FN A(L) A(E1)
A-B-D1	FN B(PR) D(PR) B(E4) D(E4)
Approach	DS - Z+ A(NEXT) A(NEXT)
A-B-D1	FN A(L),B(L) D(L) A(E3)
Approach	DS - A/B/D A/B/D A-B-D1(PR),B(NEXT),D(NEXT)
A-B-D1	FN B(E3) D(E3)
Approach	DS A(NEXT),D(NEXT) A(NEXT),B(NEXT)
A-B-D2	FN A(L) A(E2) B(E2) D(E2)
Approach	DS SG/PS A/B/D A B
B-C-D	FN B(PR) D(PR) B(E1)
cont.	DS B,C,D B,C,D Z+,C C(NEXT),D(NEXT)
B-C-D	FN C(E1) D(E1)
cont.	DS B(NEXT),D(NEXT) B(NEXT),C(NEXT)
C	FN C(L) C(E2)
P1	FN A(PR) C(L)
P.B.	SG/PS P1(WALK) A,P1(WALK)
P2	FN C(PR) A(L)
P.B.	SG/PS P2(WALK) C,P2(WALK)
P3	FN C(PR) A(L)
P.B.	SG/PS P3(WALK) C,P3(WALK)

SIGNAL GROUP/PHASE CHART

SIGNAL GROUP	PHASES WHEN GREEN				REMARKS
	A	B	C	D	
V1	X				1
V2	X	X			3
V3	X		X		81
V4				X	73
V5				X	78
V6	X	X	X		14
P1	X				2
P2		X			2
P3			X		2



POSTS

POST	TYPE	LENGTH	REMARKS
1	2	4.1	NEW
2	2	4.1	NEW
3	2	4.1	NEW
4	2	4.1	NEW
5	SS	-	NEW
6	2	3.2	NEW

- NOTES:**
- This site is SCATS linked.
 - All push buttons are Audio tactile.
 - Special stop sign (R1-4) to be placed on post 1.
 - Kerb ramps to be constructed at all marked foot crossings in accordance with MD.R173.B01.A.1.
 - Supply to be determined by a level 2/3 service provider.
 - Roadworks in accordance with AT&L construction drawings.

PUBLIC UTILITY LEGEND		REFERENCE PLANS		DESIGN APPROVAL		RTA ACCEPTANCE		Roads and Traffic Authority, N.S.W.		EXISTING		PROPOSED	
SYMBOLS/ABB.	SYMBOLS/ABB.	U.S.G.	E.	U.S.G.	E.	ROSS, NETTIE	RECOMMENDED	PARAMATTA CITY COUNCIL AREA	CADD FILE:	W00000_1A.dgn	SCALE	5	0 (1:200)
STP VALVE	STP POSE	01-0005	N. 1 259 948	DESIGNED	VCT	DATE	26.07.10	TRAFFIC SIGNALS AT THE INTERSECTION OF	000 TS 000	SUPERSIDES	-	ISSUE	A
SERIES MANHOLE	ELECTRIC FIT ROLE	CHECKED	AM	DESIGN PREPARED BY	TRANSPORT AND TRAFFIC PLANNING ASSOCIATES	DATE		MARSDEN ROAD (MR158) AND MOBBS LANE	REGN.	0000.000.W.0000	SHEET	1	
ELECTRIC FIT ROLE	POWER POLE	SITE CHECKED	AM	DATE				EPPING	TOS No	0000			
SLAB BOX	TELEPHONE BOX	SURVEYOR:	NSCO	DATE	June 2008								
TELEPHONE PILLAR	TELEPHONE PILLAR	DATE											