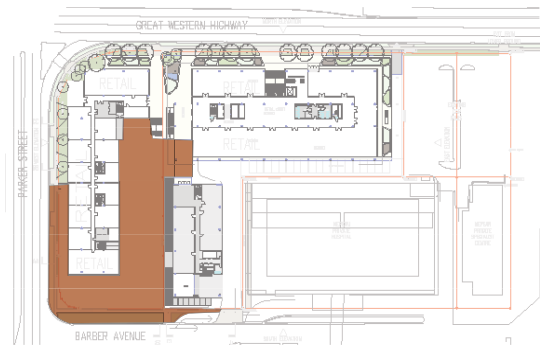
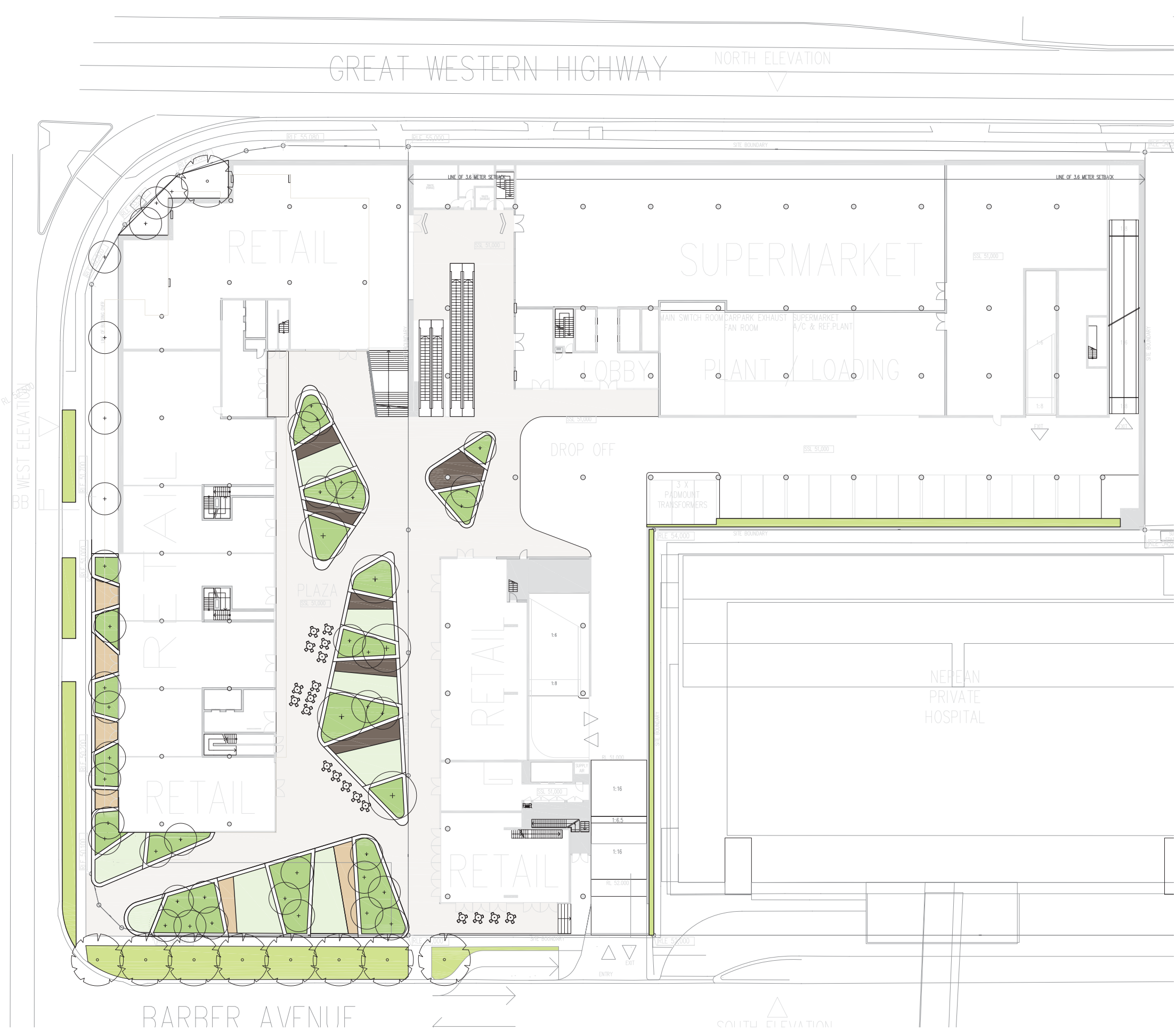





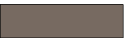


Barber Avenue, Kingswood Landscape Report





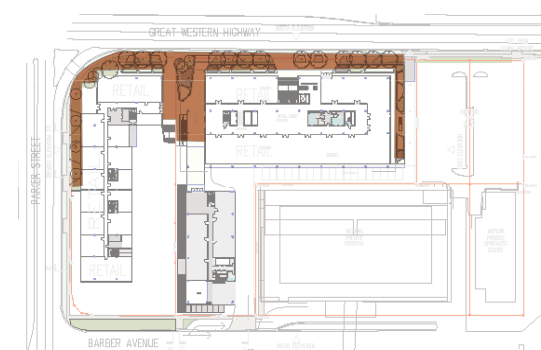
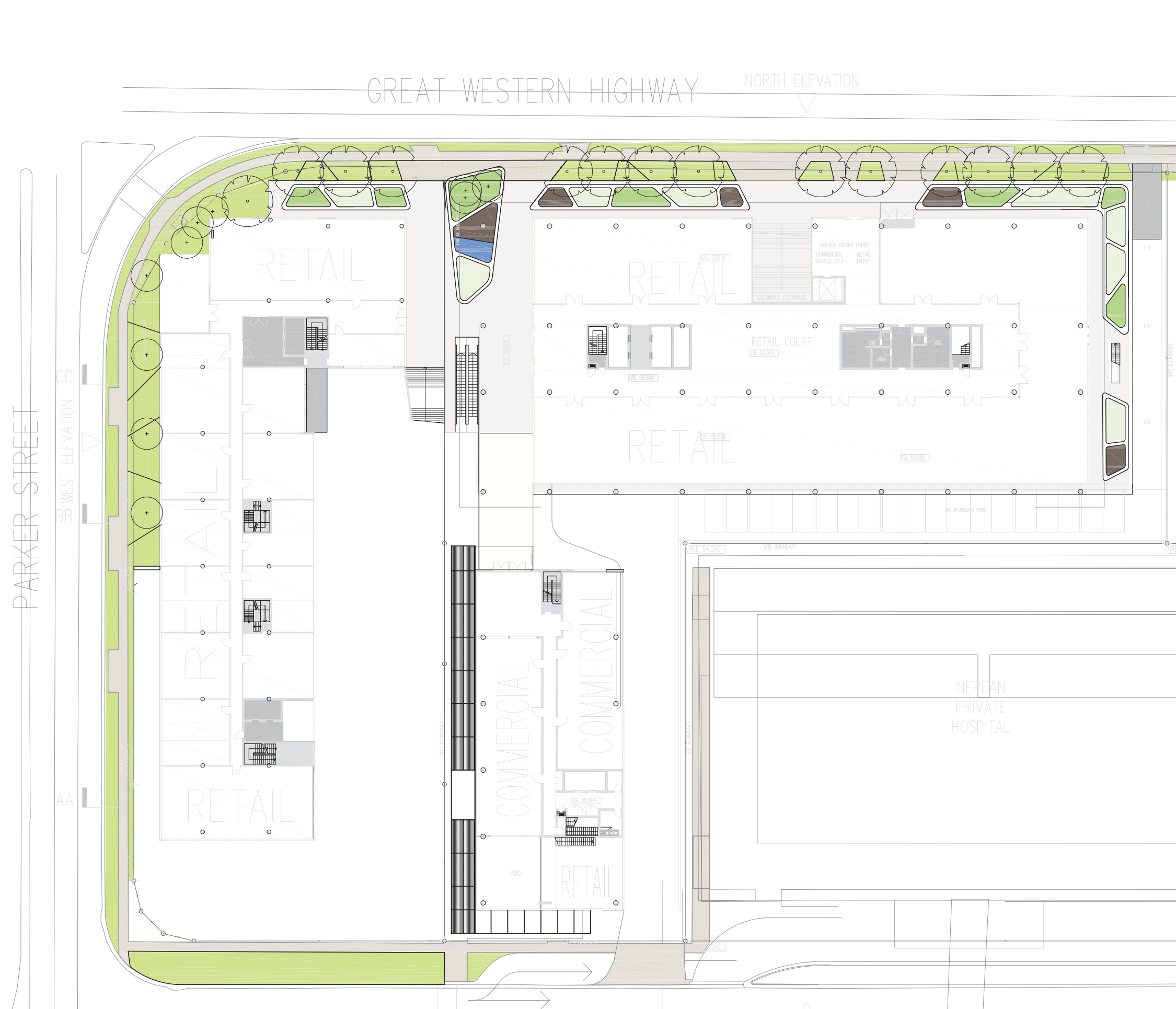
2010-Aug-27



Legend

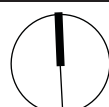
-  • Raised planters 500mm high.
-  • Timber decks 150mm above surrounding pavement level.
-  • Lawn / groundcover terraces 150mm above surrounding pavement.
-  • Gravel

	Architect	Landscape Architect	Project	Drawing Title	Project No.	Dwg No.	Revision
	TURNER+ASSOCIATES		Barber Avenue, Kingswood	LOWER GROUND FLOOR LANDSCAPE PLAN	1007	LC-01	A
					Scale 1:500@A3	Date 27/08/10	
					Dwg Status Landscape Concept		



Legend

- Shrubs in raised planters.
- Timber decks.
- Lawn / groundcover terraces in raised planter.
- Water feature



Architect
TURNER+ASSOCIATES

Landscape Architect
turf design

Project
Barber Avenue,
Kingswood

Drawing Title
**GROUND FLOOR
LANDSCAPE PLAN**

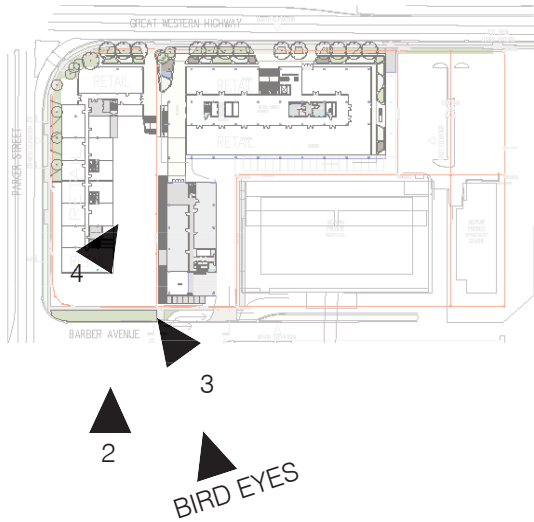
Project No. 1007	Dwg No. LC-02	Revision A
Scale 1:500@A3	Date 27/08/10	
Dwg Status Landscape Concept		



View 1



View 2



View 3



View 4

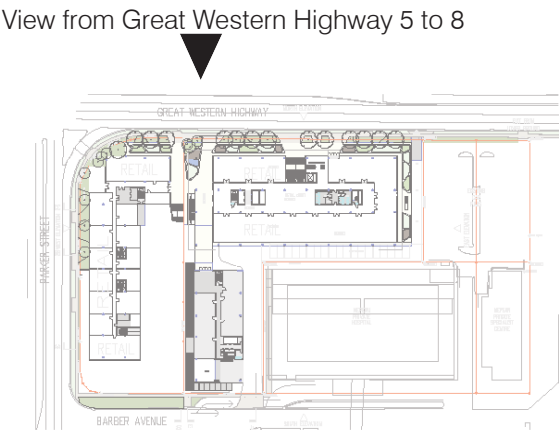
		Architect	Landscape Architect	Project Barber Avenue, Kingswood	Drawing Title PERSPECTIVES	Project No.	Dwg No.	Revision A
		TURNER+ASSOCIATES	turf design			1007	LC-03	
						Scale	Date	
						Dwg Status	Landscape Concept	



View 5




View 6

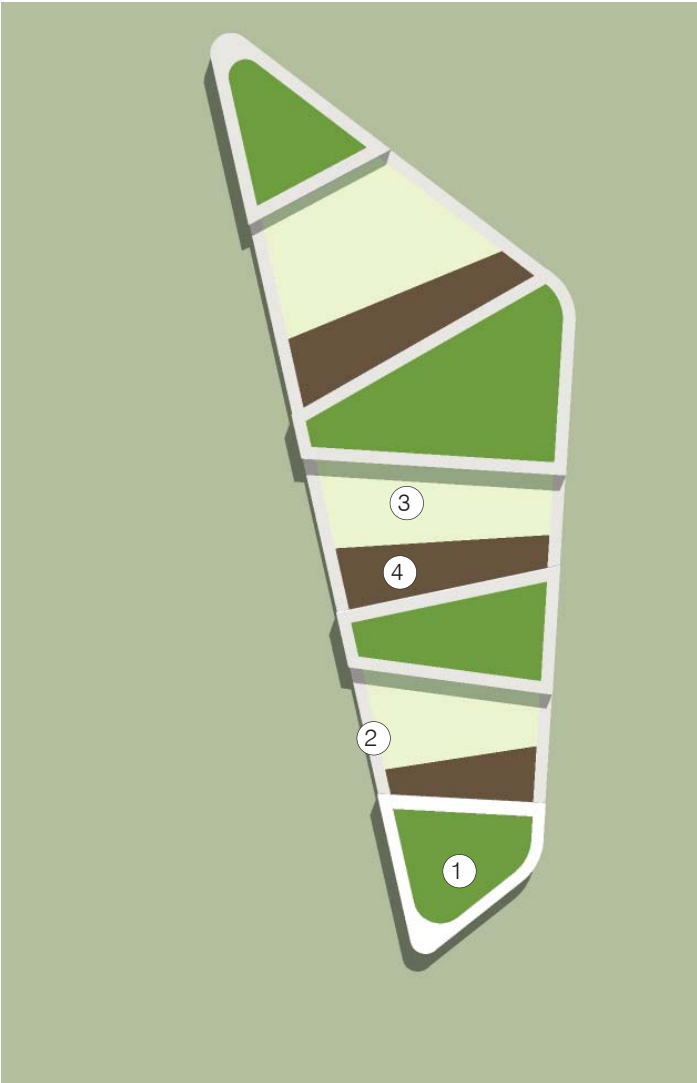


View 7

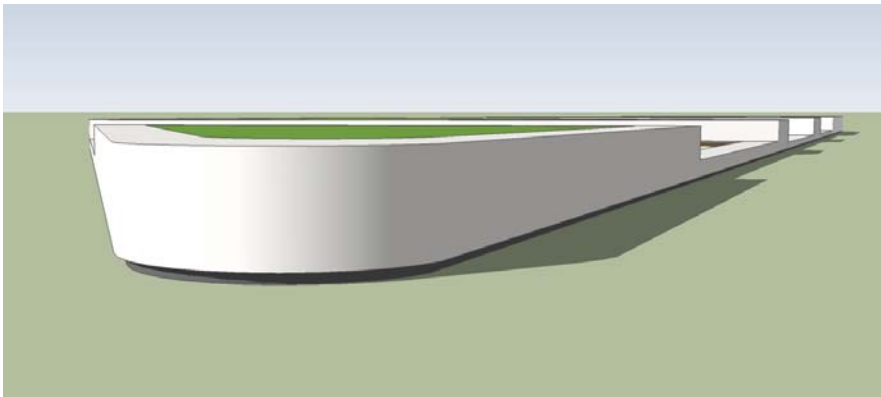


View 8

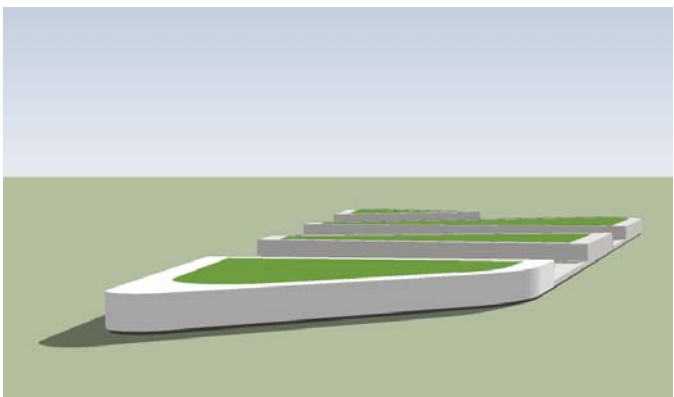
	Architect	Landscape Architect	Project	Drawing Title	Project No.	Dwg No.	Revision
	TURNER+ASSOCIATES		Barber Avenue, Kingswood	PERSPECTIVES	1007	LC-04	A
					Scale	Date	
					Dwg Status	Landscape Concept	



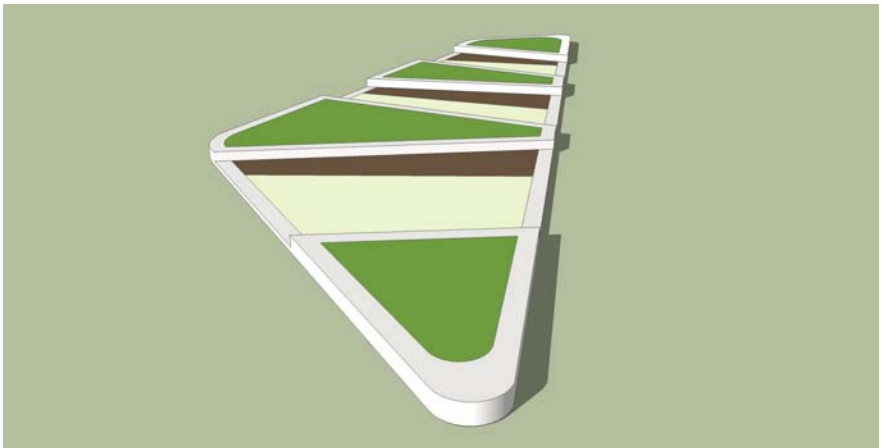
Top View



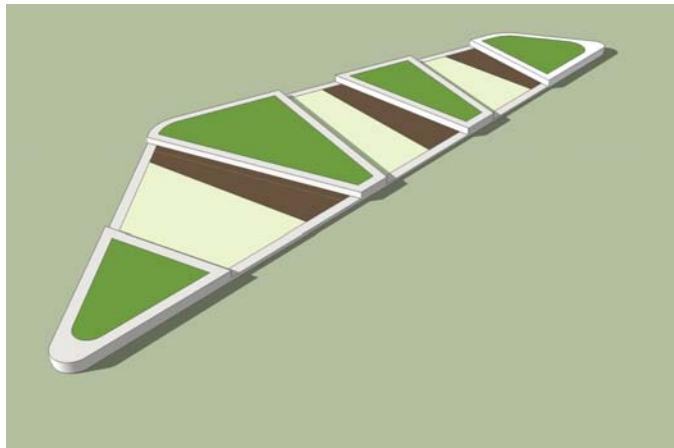
View1



View2



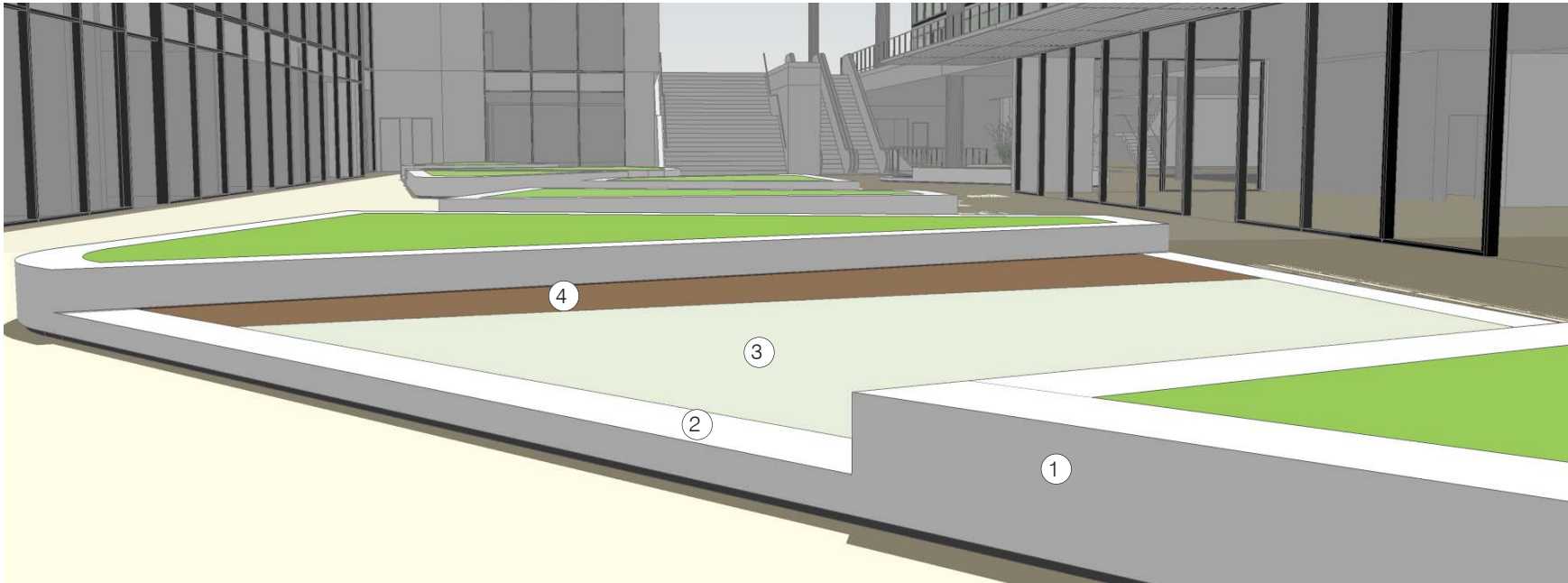
View3



View4

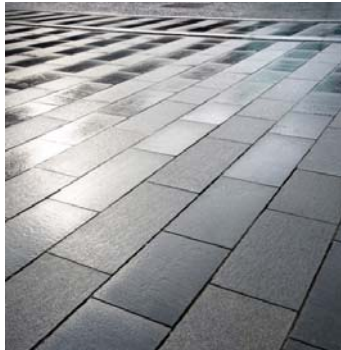
Key


- 1. Planters - 500mm high x 450mm wide concrete with recessed base
- 2. Lawn/groundcover - 150mm high x 450mm wide concrete edge with recessed base
- 3. Timber deck - Deck infill within 150mm high x 450mm wide concrete edge with recessed base



Perspective

	Architect TURNER+ASSOCIATES	Landscape Architect turf design	Project Barber Avenue, Kingswood	Drawing Title MODELLING	Project No. 1007	Dwg No. LC-05	A
					Scale	Date 27/08/10	
					Dwg Status Landscape Concept		



		Architect	Landscape Architect	Project	Drawing Title	Project No.	Dwg No.	Revision
		TURNER+ASSOCIATES		Barber Avenue, Kingswood	MATERIAL	1007	LC-06	A
						Scale	Date	
						Dwg Status	27/08/10	



Design thinking

Create a lush understory appropriate to the setting beneath the dappled filegry of shade provided by the light Eucalypt canopy over. Provide dark and lime greens with yellow flowers and foliage variegations creating a cool but rich visual aesthetic.

Plant palette

The understorey planting will be comprised of a harmonius mix of broad leafed, bold foliage shade tolerant plant species appropriate to the setting beneath the filigree of shade provided by the interwoven tree canopy above. Visual interest will be attained through mixed foliage textures, dark and lime green tones. Additional highlights of white and yellow flowers and foliage variegations will enhance the cool, but rich, visual aesthetic.

A small number of plant species will be used in order to ensure foliage colour and textural contrasts are in harmony.

The arrangement of plants will be structured around the garden modules developing larger swathes of mass plantings.

Though modulated at different heights the planting will be structured as such to retain views across the courtyards.

Proposed species include:

- Dracaena Janet Craig'*
- Pleomele reflexa*
- Liriope gigantea*
- Crinum pedunculatum*
- Philodendron 'Xanadu'*
- Hibbertia scandens*
- Trachelospermum jasminoides*
- Alpinia zerumbet*
- Elleteria cardamomum*
- Lomandra 'Tanika'*

		Architect	Landscape Architect	Project	Drawing Title	Project No.	Dwg No.	Revision
		TURNER+ASSOCIATES		Barber Avenue, Kingswood	PLANTING	1007	LC-07	
						Scale	Date	
						Dwg Status		
						27/08/10		A
						Landscape Concept		