

---

***APPENDIX B***  
***Site Photographs***

---



Photo 1: Property 1



Photo 2: Property 2

**Preliminary Contamination Assessment**  
**Shepherds Bay Urban Renewal**  
**Meadowbank**

**Project**  
**71920**

**July**  
**2010**

**Plate**  
**1**



Photo 3: Property 3



Photo 4: Property 4

<b>Preliminary Contamination Assessment</b> <b>Shepherds Bay Urban Renewal</b> <b>Meadowbank</b>	<b>Project</b> <b>71920</b>	<b>July</b> <b>2010</b>	<b>Plate</b> <b>2</b>
--	--------------------------------	----------------------------	--------------------------



Photo 5: Property 5



Photo 6: Property 6

**Preliminary Contamination Assessment**  
**Shepherds Bay Urban Renewal**  
**Meadowbank**

**Project**  
**71920**

**July**  
**2010**

**Plate**  
**3**





Photo 7: Property 7



Photo 8: Western side of Property 8

**Preliminary Contamination Assessment**  
**Shepherds Bay Urban Renewal**  
**Meadowbank**

**Project**  
**71920**

**July**  
**2010**

**Plate**  
**4**



Photo 9: Western side of Property 8



Photo 10: Western side of Property 8

**Preliminary Contamination Assessment**  
**Shepherds Bay Urban Renewal**  
**Meadowbank**

**Project**  
**71920**

**July**  
**2010**

**Plate**  
**5**





Photo 11: Eastern Side of Property 8



Photo 12: Exposed sandstone of eastern side of Property 8 along Nancarrow Road

<b>Preliminary Contamination Assessment</b> <b>Shepherds Bay Urban Renewal</b> <b>Meadowbank</b>	<b>Project</b> <b>71920</b>	<b>July</b> <b>2010</b>	<b>Plate</b> <b>6</b>
--	--------------------------------	----------------------------	--------------------------



<p>Photo 14: Gravel and Soil stockpiles on vacant section of Property 8</p> <p><b>Preliminary Contamination Assessment</b>  <b>Shepherds Bay Urban Renewal</b>  <b>Meadowbank</b></p>	<p><b>Project</b>  <b>71920</b></p>	<p><b>July</b>  <b>2010</b></p>	<p><b>Plate</b>  <b>1</b></p>
---	---	-------------------------------------	-----------------------------------





Photo 15: Abandoned Barrel on vacant part of Property 8



Photo 16: Dumped concrete rubble with fibre cement pieces attached at Property 8



Photo 17: Property 9 from Nancarrow Road



Photo 18: Property 9 from Constitution Road

**Preliminary Contamination Assessment**  
**Shepherds Bay Urban Renewal**  
**Meadowbank**

**Project**  
**71920**

**July**  
**2010**

**Plate**  
**9**





Photo 19: Substation on north west corner of Property 9



Photo 20: Exposed sandstone on north eastern side of Property 9

**Preliminary Contamination Assessment**  
**Shepherds Bay Urban Renewal**  
**Meadowbank**

**Project**  
**71920**

**July**  
**2010**

**Plate**  
**10**





Photo 21: Constitution Road Embankment adjacent to Property 9



Photo 22: Property 10

**Preliminary Contamination Assessment**  
**Shepherds Bay Urban Renewal**  
**Meadowbank**

**Project**  
**71920**

**July**  
**2010**

**Plate**  
**11**



Photo 23: Property 11



Photo 24: Property 12

<b>Preliminary Contamination Assessment</b> <b>Shepherds Bay Urban Renewal</b> <b>Meadowbank</b>	<b>Project</b> <b>71920</b>	<b>July</b> <b>2010</b>	<b>Plate</b> <b>12</b>
--	--------------------------------	----------------------------	---------------------------





Photo 25: western lot of Property 13



Photo 26: Central lot of Property 13

**Preliminary Contamination Assessment**  
**Shepherds Bay Urban Renewal**  
**Meadowbank**

**Project**  
**71920**

**July**  
**2010**

**Plate**  
**13**





Photo 27: Eastern lot of Property 13



Photo 28: Property 14

**Preliminary Contamination Assessment**  
**Shepherds Bay Urban Renewal**  
**Meadowbank**

**Project**  
**71920**

**July**  
**2010**

**Plate**  
**14**



Photo 29: Property 15 south west corner



Photo 30: Property 15 centre of timber yard





Photo 31: Property 16



Photo 32: Property 17

**Preliminary Contamination Assessment**  
**Shepherds Bay Urban Renewal**  
**Meadowbank**

**Project**  
**71920**

**July**  
**2010**

**Plate**  
**16**





Photo 33: Eastern lot of Property 18



Photo 34: Central Lot of Property 18

**Preliminary Contamination Assessment**  
**Shepherds Bay Urban Renewal**  
**Meadowbank**

**Project**  
**71920**

**July**  
**2010**

**Plate**  
**17**



Photo 35: Western Lot of Property 18



Photo 36: Property 19

**Preliminary Contamination Assessment**  
**Shepherds Bay Urban Renewal**  
**Meadowbank**

**Project**  
**71920**

**July**  
**2010**

**Plate**  
**18**





Photo 37: Abandoned car at rear of Property 19



Photo 38: Site 20

**Preliminary Contamination Assessment**  
**Shepherds Bay Urban Renewal**  
**Meadowbank**

**Project**  
**71920**

**July**  
**2010**

**Plate**  
**19**





Photo 39: Property 21



Photo 40: Property 22

**Preliminary Contamination Assessment**  
**Shepherds Bay Urban Renewal**  
**Meadowbank**

**Project**  
**71920**

**July**  
**2010**

**Plate**  
**20**



Photo 41: Property 23



Photo 42: Eastern building of Property 24

**Preliminary Contamination Assessment**  
**Shepherds Bay Urban Renewal**  
**Meadowbank**

**Project**  
**71920**

**July**  
**2010**

**Plate**  
**21**



Photo 43: Western building of Property 24



Photo 44: Property 25

<b>Preliminary Contamination Assessment</b> <b>Shepherds Bay Urban Renewal</b> <b>Meadowbank</b>	<b>Project</b> <b>71920</b>	<b>July</b> <b>2010</b>	<b>Plate</b> <b>22</b>
--	--------------------------------	----------------------------	---------------------------





Photo 45: Property 26



Photo 46: Property 27

<b>Preliminary Contamination Assessment</b> <b>Shepherds Bay Urban Renewal</b> <b>Meadowbank</b>	<b>Project</b> <b>71920</b>	<b>July</b> <b>2010</b>	<b>Plate</b> <b>23</b>
--	--------------------------------	----------------------------	---------------------------



Photo 47: Property 28



Photo 48: Property 29

<b>Preliminary Contamination Assessment</b> <b>Shepherds Bay Urban Renewal</b> <b>Meadowbank</b>	<b>Project</b> <b>71920</b>	<b>July</b> <b>2010</b>	<b>Plate</b> <b>24</b>
--	--------------------------------	----------------------------	---------------------------



Photo 49: Property 30



Photo 50: Property 31

**Preliminary Contamination Assessment**  
**Shepherds Bay Urban Renewal**  
**Meadowbank**

**Project**  
**71920**

**July**  
**2010**

**Plate**  
**25**





Photo 51: Belmore Street Side of Property 32



Photo 52: Corner of Belmore and Rothesay Property 32

**Preliminary Contamination Assessment**  
**Shepherds Bay Urban Renewal**  
**Meadowbank**

**Project**  
**71920**

**July**  
**2010**

**Plate**  
**26**



Photo 53: Eastern side of Property 32



Photo 54: Ground floor level of Property 32 on south eastern side

<b>Preliminary Contamination Assessment</b> <b>Shepherds Bay Urban Renewal</b> <b>Meadowbank</b>	<b>Project</b> <b>71920</b>	<b>July</b> <b>2010</b>	<b>Plate</b> <b>27</b>
--	--------------------------------	----------------------------	---------------------------



Photo 55: Southern side of Property 32



Photo 56: Southern side of Property 32

**Preliminary Contamination Assessment**  
**Shepherds Bay Urban Renewal**  
**Meadowbank**

**Project**  
**71920**

**July**  
**2010**

**Plate**  
**28**





Photo 57: Warehouse floor on northern side of Property 32



Photo 58: Exposed soil at centre of Property 32 on Rothesay Street

**Preliminary Contamination Assessment**  
**Shepherds Bay Urban Renewal**  
**Meadowbank**

**Project**  
**71920**

**July**  
**2010**

**Plate**  
**29**



Photo 59: north eastern corner of Property 32



Photo 60: north western corner of Property 32

**Preliminary Contamination Assessment**  
**Shepherds Bay Urban Renewal**  
**Meadowbank**

**Project**  
**71920**

**July**  
**2010**

**Plate**  
**30**





Photo 61: Exposed sandstone at north western corner of Property 32



Photo 62: eastern side of property 33

**Preliminary Contamination Assessment**  
**Shepherds Bay Urban Renewal**  
**Meadowbank**

**Project**  
**71920**

**July**  
**2010**

**Plate**  
**31**





Photo 63: water tank in Property 33



Photo 64: Central Building in Property 32

**Preliminary Contamination Assessment**  
**Shepherds Bay Urban Renewal**  
**Meadowbank**

**Project**  
**71920**

**July**  
**2010**

**Plate**  
**32**



Photo 65: Western part of Property 33



Photo 66: Property 34

**Preliminary Contamination Assessment**  
**Shepherds Bay Urban Renewal**  
**Meadowbank**

**Project**  
**71920**

**July**  
**2010**

**Plate**  
**33**





Photo 67: Property 35



Photo 68: Property 36

<b>Preliminary Contamination Assessment</b> <b>Shepherds Bay Urban Renewal</b> <b>Meadowbank</b>	<b>Project</b> <b>71920</b>	<b>July</b> <b>2010</b>	<b>Plate</b> <b>34</b>
--	--------------------------------	----------------------------	---------------------------





Photo 69: Property 37



Photo 70: Property 38



Photo71: Property 39



Photo 72: Embankment along Auburn Street side of Property 4C

**Preliminary Contamination Assessment**  
**Shepherds Bay Urban Renewal**  
**Meadowbank**

**Project**  
**71920**

**July**  
**2010**

**Plate**  
**36**





Photo73: Southern side of Property 40



Photo 74: Property 41

**Preliminary Contamination Assessment**  
**Shepherds Bay Urban Renewal**  
**Meadowbank**

**Project**  
**71920**

**July**  
**2010**

**Plate**  
**37**



---

***APPENDIX C***  
***Site History Information***

---



**Douglas Partners**  
Geotechnics • Environment • Groundwater

CLIENT: Holdmark Constructions Pty Ltd

DRAWN BY: KP

SCALE: NTS

OFFICE: Sydney

APPROVED BY: KP

DATE: 19.07.2010

TITLE:

**1930 Aerial Photograph**

**Preliminary Contamination Assessment**

**Proposed Shepherds Bay Urban Renewal**

Project No: 71920

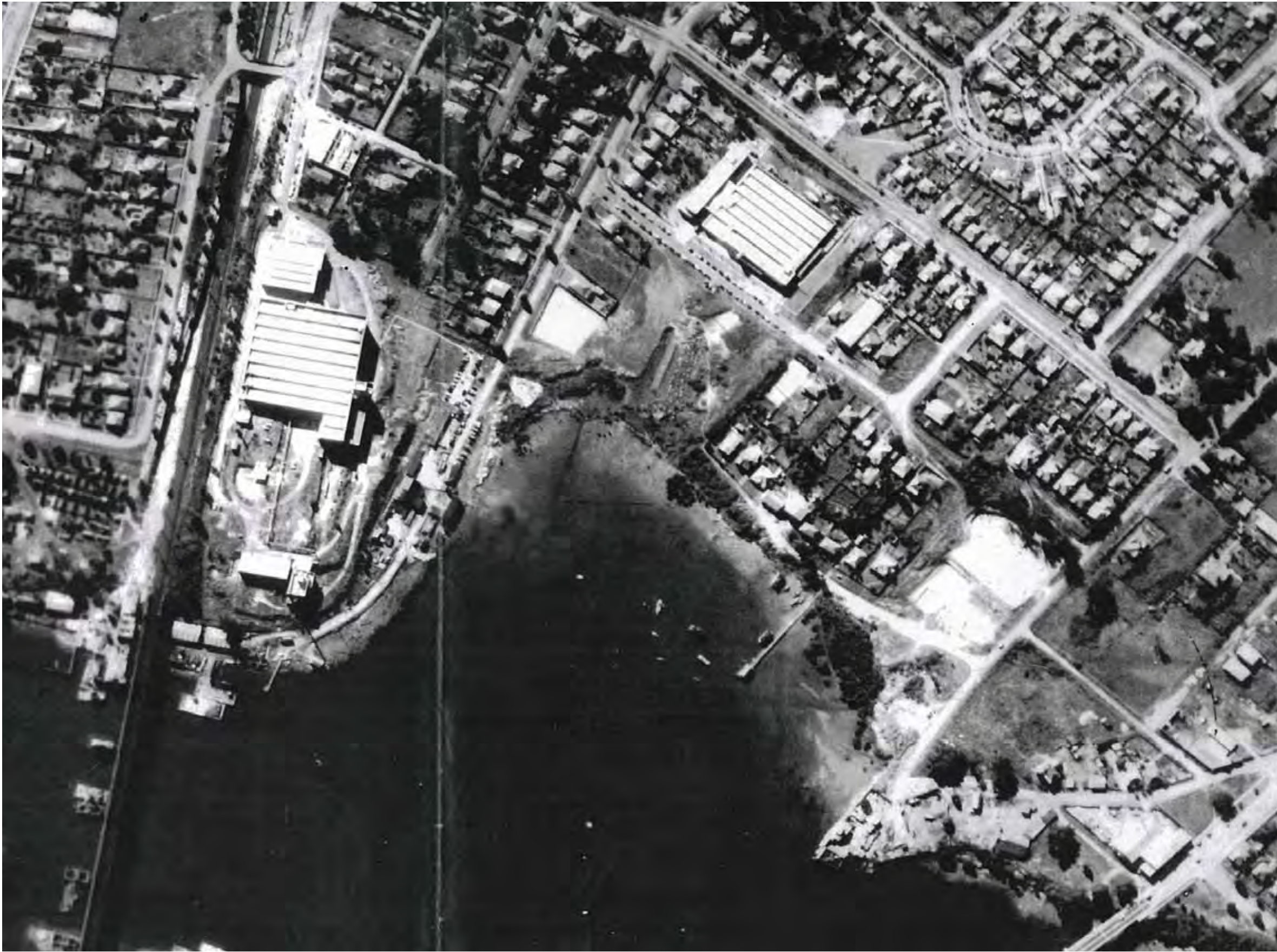
Aerial Photo No: 1

Revision: A









**Douglas Partners**  
Geotechnics • Environment • Groundwater

CLIENT: Holdmark Constructions Pty Ltd

DRAWN BY: KP

SCALE: NTS

OFFICE: Sydney

APPROVED BY: KP

DATE: 19.07.2010

TITLE:

**1951 Aerial Photograph**  
**Preliminary Contamination Assessment**  
**Proposed Shepherds Bay Urban Renewal**

Project No: 71920

Aerial Photo No: 3

Revision: A









**Douglas Partners**  
Geotechnics • Environment • Groundwater

CLIENT: Holdmark Constructions Pty Ltd

DRAWN BY: KP

SCALE: NTS

OFFICE: Sydney

APPROVED BY: KP

DATE: 19.07.2010

TITLE:

**1970 Aerial Photograph**

**Preliminary Contamination Assessment**

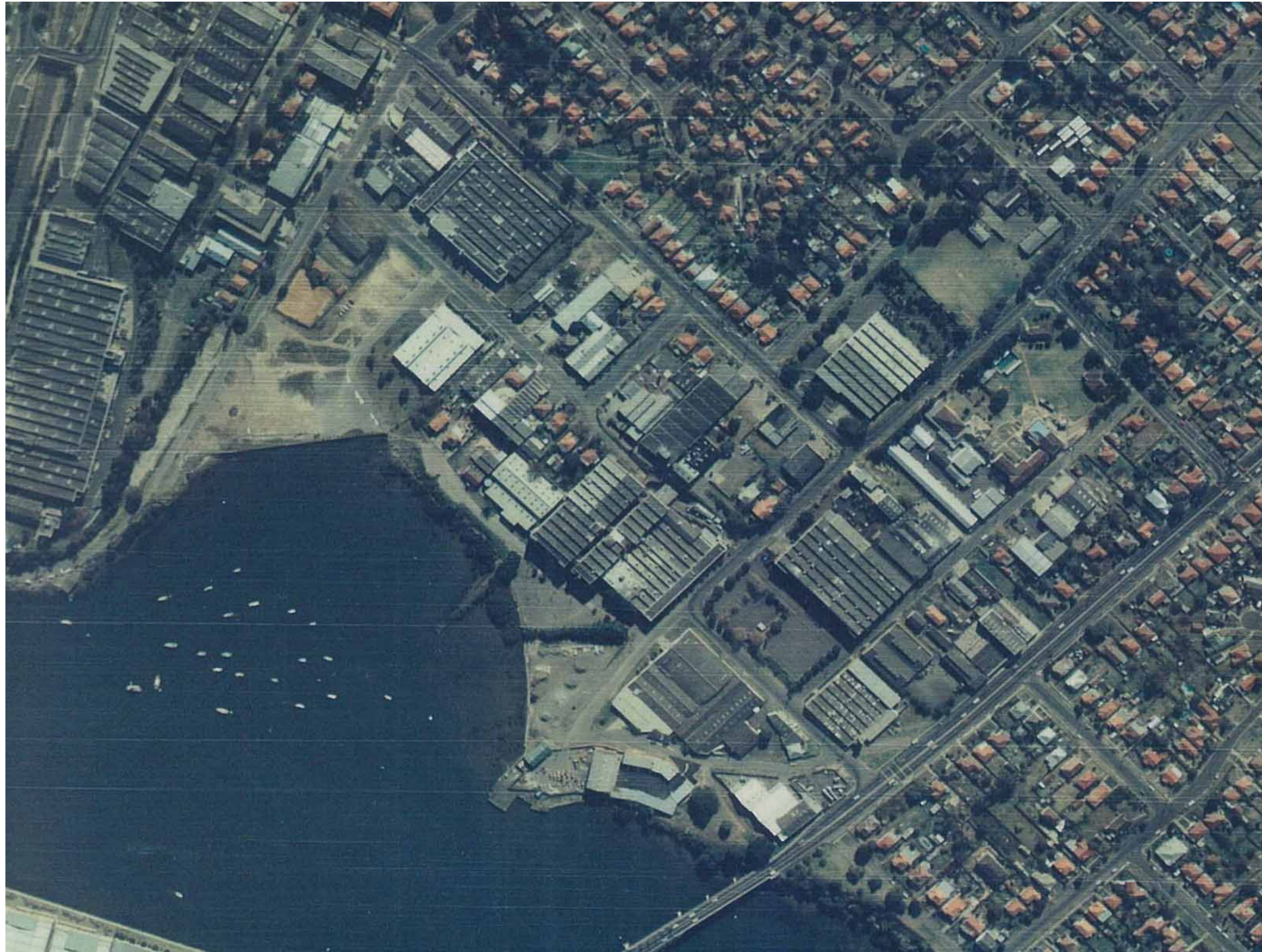
**Proposed Shepherds Bay Urban Renewal**

Project No: 71920

Aerial Photo No: 5

Revision: A





**Douglas Partners**  
Geotechnics • Environment • Groundwater

CLIENT: Holdmark Constructions Pty Ltd

DRAWN BY: KP

SCALE: NTS

OFFICE: Sydney

APPROVED BY: KP

DATE: 19.07.2010

TITLE:

**1982 Aerial Photograph**

**Preliminary Contamination Assessment**

**Proposed Shepherds Bay Urban Renewal**

Project No: 71920

Aerial Photo No: 6

Revision: A

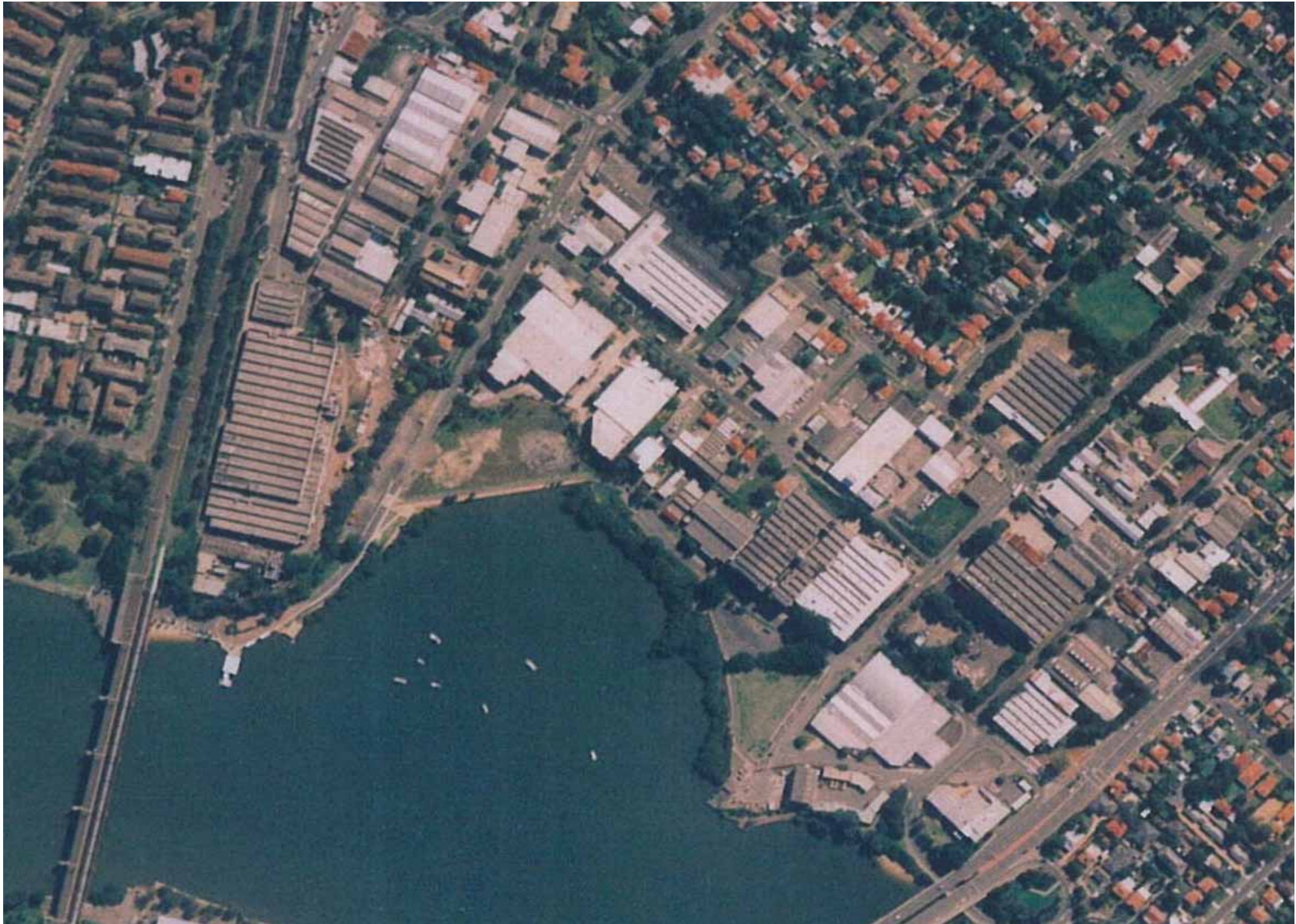












**Douglas Partners**  
Geotechnics • Environment • Groundwater

CLIENT: Holdmark Constructions Pty Ltd

DRAWN BY: KP

SCALE: NTS

OFFICE: Sydney

APPROVED BY: KP

DATE: 19.07.2010

TITLE:

**2002 Aerial Photograph**

**Preliminary Contamination Assessment**

**Proposed Shepherds Bay Urban Renewal**

Project No: 71920

Aerial Photo No: 9

Revision: A





**Douglas Partners**  
Geotechnics • Environment • Groundwater

CLIENT: Holdmark Constructions Pty Ltd

DRAWN BY: KP

SCALE: NTS

OFFICE: Sydney

APPROVED BY: KP

DATE: 19.07.2010

TITLE:

**2010 Aerial Photograph**  
**Preliminary Contamination Assessment**  
**Proposed Shepherds Bay Urban Renewal**

Project No: 71920

Aerial Photo No: 10

Revision: A

# Groundwater Works Summary

For information on the meaning of fields please see [Glossary](#)  
Document Generated on Tuesday, July 20, 2010

[Print Report](#)

[Works Details](#) [Site Details](#) [Form A](#) [Licensed Construction](#) [Water Bearing Zones](#) [Drillers Log](#)

## Work Requested -- GW104999

### Works Details [\(top\)](#)

GROUNDWATER NUMBER GW104999  
LIC-NUM 10BL160464  
AUTHORISED-PURPOSES MONITORING BORE  
INTENDED-PURPOSES MONITORING BORE  
WORK-TYPE Bore  
WORK-STATUS Supply Obtained  
CONSTRUCTION-METHOD  
OWNER-TYPE  
COMMENCE-DATE  
COMPLETION-DATE 2001-08-20  
FINAL-DEPTH (metres) 3.10  
DRILLED-DEPTH (metres) 3.60  
CONTRACTOR-NAME  
DRILLER-NAME  
PROPERTY N/A  
GWMA -  
GW-ZONE -  
STANDING-WATER-LEVEL 3.54  
SALINITY 248.00  
YIELD

### Site Details [\(top\)](#)

REGION 10 - SYDNEY SOUTH COAST  
RIVER-BASIN 213 - SYDNEY COAST - GEORGES RIVER  
AREA-DISTRICT  
CMA-MAP 9130-3N  
GRID-ZONE 56/1  
SCALE 1:25,000  
ELEVATION  
ELEVATION-SOURCE (Unknown)  
NORTHING 6256697.00  
EASTING 323091.00  
LATITUDE 33 48' 55"  
LONGITUDE 151 5' 19"  
GS-MAP



AMG-ZONE 56  
 COORD-SOURCE  
 REMARK

**Form-A (top)**

COUNTY CUMBERLAND  
 PARISH HUNTERS HILL  
 PORTION-LOT-DP LT3 DP206306

**Licensed (top)**

COUNTY CUMBERLAND  
 PARISH HUNTERS HILL  
 PORTION-LOT-DP 200 1032187

**Construction (top)**

Negative depths indicate Above Ground Level;H-Hole;P-Pipe;OD-Outside Diameter;  
 ID-Inside Diameter;C-Cemented;SL-Slot Length;A-Aperture;GS-Grain Size;Q-Quantity

HOLE- NO	PIPE- NO	COMPONENT- CODE	COMPONENT- TYPE	DEPTH- FROM (metres)	DEPTH- TO (metres)	OD (mm)	ID (mm)	INTERVAL	DETAIL
1		Hole	Hole	0.00	3.10	100			Auger
1	1	Casing	PVC Class 18	0.00	3.00	60			Screwed; Seated on Bottom
1	1	Opening	Slots - Horizontal	3.00	3.60	60			PVC Class 18; A: 35mm
1		Annulus	Waterworn/Rounded	1.00	2.50				Graded; GS: 2.8- 3.6mm; Q: 0m <sup>3</sup>

**Water Bearing Zones (top)**

FROM- DEPTH (metres)	TO-DEPTH (metres)	THICKNESS (metres)	ROCK- CAT- DESC	S- W-L	D- D- L	YIELD	TEST-HOLE- DEPTH (metres)	DURATION	SALINITY
3.50	3.60	0.10		3.54					248.00

**Drillers Log (top)**

FROM	TO	THICKNESS	DESC	GEO-MATERIAL	COMMENT
0.00	0.90	0.90	FILL,CLAYEY SAND BROWN		
0.90	1.30	0.40	FILL, SILTY CLAYEY SAND GREY		
1.30	3.60	2.30	CLAY,SANDY,MOTTED GREY		

**Warning To Clients:** This raw data has been supplied to the Department of Infrastructure, Planning and Natural Resources (DIPNR) by drillers, licensees and other sources. The DIPNR does not verify the accuracy of this data. The data is presented for use by you at your own risk. You should consider verifying this data before relying on it. Professional hydrogeological advice should be sought in interpreting and using this data.



# Groundwater Works Summary

For information on the meaning of fields please see [Glossary](#)  
Document Generated on Tuesday, July 20, 2010

[Print Report](#)

[Works Details](#) [Site Details](#) [Form A](#) [Licensed](#) [Construction](#) [Water Bearing Zones](#) [Drillers Log](#)

## Work Requested -- GW104998

### Works Details [\(top\)](#)

GROUNDWATER NUMBER GW104998  
LIC-NUM 10BL160464  
AUTHORISED-PURPOSES MONITORING BORE  
INTENDED-PURPOSES MONITORING BORE  
WORK-TYPE Bore  
WORK-STATUS Supply Obtained  
CONSTRUCTION-METHOD  
OWNER-TYPE  
COMMENCE-DATE  
COMPLETION-DATE 2001-08-20  
FINAL-DEPTH (metres) 3.10  
DRILLED-DEPTH (metres) 3.10  
CONTRACTOR-NAME  
DRILLER-NAME  
PROPERTY N/A  
GWMA -  
GW-ZONE -  
STANDING-WATER-LEVEL 2.50  
SALINITY 279.00  
YIELD

### Site Details [\(top\)](#)

REGION 10 - SYDNEY SOUTH COAST  
RIVER-BASIN 213 - SYDNEY COAST - GEORGES RIVER  
AREA-DISTRICT  
CMA-MAP 9130-3N  
GRID-ZONE 56/1  
SCALE 1:25,000  
ELEVATION  
ELEVATION-SOURCE (Unknown)  
NORTHING 6256701.00  
EASTING 323055.00  
LATITUDE 33 48' 54"  
LONGITUDE 151 5' 18"  
GS-MAP

AMG-ZONE 56  
COORD-SOURCE  
REMARK

**Form-A (top)**

COUNTY CUMBERLAND  
PARISH HUNTERS HILL  
PORTION-LOT-DP LT1 DP206306

**Licensed (top)**

COUNTY CUMBERLAND  
PARISH HUNTERS HILL  
PORTION-LOT-DP 200 1032187

**Construction (top)**

Negative depths indicate Above Ground Level;H-Hole;P-Pipe;OD-Outside Diameter;  
ID-Inside Diameter;C-Cemented;SL-Slot Length;A-Aperture;GS-Grain Size;Q-Quantity

HOLE- NO	PIPE- NO	COMPONENT- CODE	COMPONENT- TYPE	DEPTH- FROM (metres)	DEPTH- TO (metres)	OD (mm)	ID (mm)	INTERVAL	DETAIL
1		Hole	Hole	0.00	3.10	100			Auger
1	1	Casing	PVC Class 18	0.00	2.50	60	50		Screwed PVC Class 18; A: 35mm
1	1	Opening	Slots - Horizontal	2.50	3.10	60			Graded; GS: 2.4- 3.1mm; Q: 0m³
1		Annulus	Waterworn/Rounded	1.00	2.50				

**Water Bearing Zones (top)**

FROM- DEPTH (metres)	TO-DEPTH (metres)	THICKNESS (metres)	ROCK- CAT- DESC	S- W-L	D- D- L	YIELD	TEST-HOLE- DEPTH (metres)	DURATION	SALINITY
2.50	3.10	0.60		2.50					279.00

**Drillers Log (top)**

FROM	TO	THICKNESS	DESC	GEO-MATERIAL	COMMENT
0.00	0.90	0.90	FILL,CLAYEY SAND,BROWN		
0.90	1.40	0.50	FILL,SILTY CLAYEY SAND,GREY		
1.40	3.10	1.70	CLAY,SANDY,MOTTED GREY		

Warning To Clients: This raw data has been supplied to the Department of Infrastructure, Planning and Natural Resources



(DIPNR) by drillers, licensees and other sources. The DIPNR does not verify the accuracy of this data. The data is presented for use by you at your own risk. You should consider verifying this data before relying on it. Professional hydrogeological advice should be sought in interpreting and using this data.

# Groundwater Works Summary

For information on the meaning of fields please see [Glossary](#)  
Document Generated on Tuesday, July 20, 2010

[Print Report](#)

[Works Details](#) [Site Details](#) [Form A](#) [Licensed Construction](#) [Water Bearing Zones](#) [Drillers Log](#)

## Work Requested -- GW104997

### Works Details ([top](#))

GROUNDWATER NUMBER GW104997  
LIC-NUM 10BL160464  
AUTHORISED-PURPOSES MONITORING BORE  
INTENDED-PURPOSES MONITORING BORE  
WORK-TYPE Bore  
WORK-STATUS Supply Obtained  
CONSTRUCTION-METHOD  
OWNER-TYPE  
COMMENCE-DATE  
COMPLETION-DATE 2001-08-20  
FINAL-DEPTH (metres) 2.40  
DRILLED-DEPTH (metres) 2.40  
CONTRACTOR-NAME  
DRILLER-NAME  
PROPERTY N/A  
GWMA -  
GW-ZONE -  
STANDING-WATER-LEVEL 2.32  
SALINITY 260.00  
YIELD

### Site Details ([top](#))

REGION 10 - SYDNEY SOUTH COAST  
RIVER-BASIN 213 - SYDNEY COAST - GEORGES RIVER  
AREA-DISTRICT  
CMA-MAP 9130-3N  
GRID-ZONE 56/1  
SCALE 1:25,000  
ELEVATION  
ELEVATION-SOURCE (Unknown)  
NORTHING 6256692.00  
EASTING 323049.00  
LATITUDE 33 48' 55"  
LONGITUDE 151 5' 17"  
GS-MAP



AMG-ZONE 56  
 COORD-SOURCE  
 REMARK

**Form-A (top)**

COUNTY CUMBERLAND  
 PARISH HUNTERS HILL  
 PORTION-LOT-DP LT1 DP206306

**Licensed (top)**

COUNTY CUMBERLAND  
 PARISH HUNTERS HILL  
 PORTION-LOT-DP 200 1032187

**Construction (top)**

Negative depths indicate Above Ground Level;H-Hole;P-Pipe;OD-Outside Diameter;  
 ID-Inside Diameter;C-Cemented;SL-Slot Length;A-Aperture;GS-Grain Size;Q-Quantity

HOLE- NO	PIPE- NO	COMPONENT- CODE	COMPONENT- TYPE	DEPTH- FROM (metres)	DEPTH- TO (metres)	OD (mm)	ID (mm)	INTERVAL	DETAIL
1		Hole	Hole	0.00	2.40	100			Auger
1	1	Casing	PVC Class 18	0.00	1.90	60	50		Screwed; Seated on Bottom
1	1	Opening	Slots - Horizontal	1.90	2.40	60			PVC Class 18; A: 35mm
1		Annulus	Waterworn/Rounded	1.00	2.50				Graded; GS: 1.7- 2.4mm; Q: 0m³

**Water Bearing Zones (top)**

FROM- DEPTH (metres)	TO-DEPTH (metres)	THICKNESS (metres)	ROCK- CAT- DESC	S- W-L	D- D- L	YIELD	TEST-HOLE- DEPTH (metres)	DURATION	SALINITY
2.30	2.40	0.10		2.32					260.00

**Drillers Log (top)**

FROM	TO	THICKNESS	DESC	GEO-MATERIAL	COMMENT
0.00	0.70	0.70	FILL,CLAYEY SAND		
0.70	1.50	0.80	FILL,SILTY CLAYEY SAND		
1.50	2.40	0.90	SILTY SANDY CLAY,GREY		

**Warning To Clients:** This raw data has been supplied to the Department of Infrastructure, Planning and Natural Resources (DIPNR) by drillers, licensees and other sources. The DIPNR does not verify the accuracy of this data. The data is presented for use by you at your own risk. You should consider verifying this data before relying on it. Professional hydrogeological advice should be sought in interpreting and using this data.





You are here: [Home](#) > [Contaminated land](#) > [Record of EPA notices](#)



## Search results

Your search for: LGA: Ryde City Council

[Search Again](#)[Refine Search](#)

did not find any records in our database.

If a site does not appear on the record it may still be affected by contamination. For example:

- Contamination may be present but the site has not been regulated by the EPA under the Contaminated Land Management Act 1997 or the Environmentally Hazardous Chemicals Act 1985.
- The EPA may be regulating contamination at the site through a licence or notice under the Protection of the Environment Operations Act 1997 (POEO Act).
- Contamination at the site may be being managed under the [planning process](#).

More information about particular sites may be available from:

- The [POEO public register](#)
- The appropriate planning authority: for example, on a planning certificate issued by the local council under [section 149 of the Environmental Planning and Assessment Act](#).

### Search TIP

To search for a specific site, search by LGA (local government area) and carefully review all sites listed.

... [more search tips](#)

See [What's in the record and What's not in the record](#).

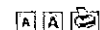
If you want to know whether a specific site has been the subject of notices issued by the EPA under the CLM Act, we suggest that you search by Local Government Area only and carefully review the sites that are listed.

This public record provides information about sites regulated by the EPA under the Contaminated Land Management Act 1997, including sites currently and previously regulated under the Environmentally Hazardous Chemicals Act 1985. Your inquiry using the above search criteria has not matched any record of current or former regulation. You should consider searching again using different criteria. The fact that a site does not appear on the record does not necessarily mean that it is not affected by contamination. The site may have been notified to the EPA but not yet assessed, or contamination may be present but the site is not yet being regulated by the EPA. Further information about particular sites may be available from the appropriate planning authority, for example, on a planning certificate issued by the local council under section 149 of the Environmental Planning and Assessment Act. In addition the EPA may be regulating contamination at the site through a licence under the Protection of the Environment Operations Act 1997. You may wish to search the POEO public register. [POEO public register](#)

20 July 2010



You are here: [Home](#) > [Environment protection licences](#) > [POEO Public Register](#) > [Search for licences, applications and notices](#)



## Search Results

Your search for: **LGA - RYDE**

matched

25 licences (with applications or notices matching your search)

plus 13 notices (where no licence is available online. [See faq.](#))

[Search again](#)

[Return to previous page](#)

Document number	Name	Address	Status/Notice type
11519	SPECIALIST DIAGNOSTIC SERVICES PTY LIMITED <a href="#">licence summary</a>	10 Lyon Park Road NORTH RYDE 2113	No longer in force
6921	STATE TRANSIT AUTHORITY OF NSW <a href="#">licence summary</a>	49-75 BUFFALO RD RYDE 2112	No longer in force
10983	SYDNEY WATER CORPORATION <a href="#">licence summary</a>	51 HERMITAGE ROAD WEST RYDE 2114	No longer in force
12532	THE JOB MARKET PTY LTD <a href="#">licence summary</a>	20 Waterview Street PUTNEY 2112	Issued
11735	THIESS PTY LTD <a href="#">licence summary</a>	- MACQUARIE PARK 2113	Surrendered
4527	WASTE RECYCLING AND PROCESSING CORPORATION <a href="#">licence summary</a>	WICKS ROAD NORTH RYDE 2113	Issued
009127	AUSTRALIAN VINYLs CORPORATION LTD <a href="#">notice summary</a>	30-34 BUFFALO ROAD GLADESVILLE 2111	S 80 Surrender Licence
009120	BRAD GARLICK AUTOMOTIVE GROUP <a href="#">notice summary</a>	35-39 HIGGINBOTHAM ROAD GLADESVILLE 2111	S 80 Surrender Licence
010746	CSR, CENTRAL LABORATORY <a href="#">notice summary</a>	35-41 WATERLOO ROAD NORTH RYDE 2113	S 80 Surrender Licence
009108	DUNCAN H. MACFARLANE PTY LTD <a href="#">notice summary</a>	10 NANCARROW AVENUE RYDE 2112	S 80 Surrender Licence
010170	HARTLAND CABLES <a href="#">notice summary</a>	18-20 RAILWAY ROAD MEADOWBANK 2114	S 80 Surrender Licence
009124	HOOVER COMPANY (AUSTRALIA) PTY LTD <a href="#">notice summary</a>	84 BELMORE STREET MEADOWBANK 2114	S 80 Surrender Licence
009125	HOOVER COMPANY (AUSTRALIA) PTY LTD <a href="#">notice summary</a>	41-45 BELMORE STREET MEADOWBANK 2114	S 80 Surrender Licence
009583	KINGSTON INDUSTRIES PTY LTD <a href="#">notice summary</a>	79-83 FALCONER STREET WEST RYDE 2114	S 80 Surrender Licence
009122	KONICA AUSTRALIA PTY LIMITED <a href="#">notice summary</a>	22 GIFFNOCK AVENUE NORTH RYDE 2113	S 80 Surrender Licence
009634	RYDE AQUATIC LEISURE CENTRE (RALC) <a href="#">notice summary</a>	RYDE OLYMPIC PARK, 504 VICTORIA ROAD RYDE 2112	S 80 Surrender Licence
010273	RYDE SWIMMING CENTRE <a href="#">notice summary</a>	KAREN MORAS DRIVE RYDE 2112	S 80 Surrender Licence
010747	RYDE-PARRAMATTA GOLF CLUB <a href="#">notice summary</a>	1156 VICTORIA ROAD WEST RYDE 2046	S 80 Surrender Licence
011065	WATERS TRADING <a href="#">notice summary</a>	100 BELMORE STREET RYDE 2112	S 80 Surrender Licence

1 2

Page 2 of 2

20 July 2010





You are here: [Home](#) > [Environment protection licences](#) > [POEO Public Register](#) > [Search for licences, applications and notices](#)



## Search Results

Your search for: **LGA - RYDE**

matched

25 licences (with applications or notices matching your search)

plus 13 notices (where no licence is available online. [See faq.](#))

[Search again](#)

[Return to previous page](#)

Document number	Name	Address	Status
7020	AB MAURI TECHNOLOGY & DEVELOPMENT PTY LIMITED <a href="#">licence summary</a>	67 EPPING ROAD NORTH RYDE 2113	Surrendered
12012	ABSOLUTE SHIPWRIGHTS PTY LTD <a href="#">licence summary</a>	20 Waterview Street PUTNEY 2112	Surrendered
11754	APS MARINE PTY LTD <a href="#">licence summary</a>	20 WATERVIEW STREET PUTNEY 2112	Surrendered
6891	ASTRAZENECA PTY LTD <a href="#">licence summary</a>	10-14 KHARTOUM ROAD NORTH RYDE 2113	Issued
6919	BRI AUSTRALIA LIMITED <a href="#">licence summary</a>	1 RIVETT ROAD NORTH RYDE 2113	No longer in force
2714	BRITISH AEROSPACE AUSTRALIA PROPERTIES PTY LIMITED <a href="#">licence summary</a>	RAILWAY ROAD MEADOWBANK 2114	Surrendered
13044	CITY OF RYDE <a href="#">licence summary</a>	160 Wicks Road MACQUARIE PARK 2113	Issued
4553	CITY OF RYDE <a href="#">licence summary</a>	WICKS ROAD NORTH RYDE 2113	Surrendered
5030	CITY OF RYDE <a href="#">licence summary</a>	WITHIN THE LOCAL GOVERNMENT AREA OF RYDE CITY COUNCIL RYDE 2112	Surrendered
11182	CONTRACT PHARMACEUTICAL SERVICES OF AUSTRALIA PTY LIMITED <a href="#">licence summary</a>	1 Giffnock Avenue & 44 Waterloo Road NORTH RYDE 2113	Surrendered
10868	DOUGLASS HANLY MOIR PATHOLOGY PTY LIMITED <a href="#">licence summary</a>	95 Epping Rd NORTH RYDE 2113	No longer in force
12191	EIFFEL TECHNOLOGIES LIMITED <a href="#">licence summary</a>	3 Innovation Road NORTH RYDE 2113	Surrendered
2891	GILBARCO AUSTRALIA LIMITED <a href="#">licence summary</a>	12-38 TALAVERA ROAD NORTH RYDE 2113	Surrendered
11735	HOCHTIEF AG <a href="#">licence summary</a>	- MACQUARIE PARK 2113	Surrendered
11916	MAN DIESEL AUSTRALIA PTY LTD <a href="#">licence summary</a>	36-42 WATERLOO ROAD MACQUARIE PARK 2113	No longer in force
7101	NORTHERN SYDNEY AND CENTRAL COAST AREA HEALTH SERVICE <a href="#">licence summary</a>	WICKS ROAD NORTH RYDE 2113	No longer in force
7617	NORTHERN SYDNEY AND CENTRAL COAST AREA HEALTH SERVICE <a href="#">licence summary</a>	DENNISTONE RD EASTWOOD 2122	No longer in force
6853	NOVOGEN LIMITED <a href="#">licence summary</a>	140 WICKS ROAD NORTH RYDE 2113	Surrendered
11398	PROTEOME SYSTEMS LIMITED <a href="#">licence summary</a>	1/35-41 Waterloo Road NORTH RYDE 2113	Surrendered
91	ROYAL REHABILITATION CENTRE SYDNEY <a href="#">licence summary</a>	59 CHARLES STREET RYDE 2112	No longer in force

1 2

Page 1 of 2

20 July 2010

N009108

Notice No: 009108      Issued: 05-Jan-2000  
Notice Type: POEO S.80 SURRENDER OF LICENCE  
Premise: DUNCAN H. MACFARLANE PTY LTD  
          RYDE 2112  
Industry: FERROUS AND NON-FERROUS METAL WORKS  
Local Gov: RYDE  
Catchment: SYDNEY COAST-GEORGES RVR

.....  
Approval of the surrender of a licence

Section 80(2) Protection of the Environment Operations Act 1997

Registered Post

DUNCAN H. MACFARLANE PTY LTD  
10 NANCARROW AVENUE  
RYDE NSW 2112

Our ref: N 009108 L 002161  
          501101/B01

Date: 5 January 2000

#### APPROVAL OF THE SURRENDER OF A LICENCE

##### BACKGROUND

- (a) DUNCAN H. MACFARLANE PTY LTD ("the licensee") applied to the Environment Protection Authority ("EPA") to surrender the licence 002161.

##### APPROVAL OF THE SURRENDER OF A LICENCE

The surrender of licence 002161 is approved.

The approval of the surrender is subject to the following conditions :-

Note: The surrender of the licence takes effect when this notice is given to the licensee.

This notice is issued under section 80(2) of the Protection of the Environment Operations Act 1997.

.....  
Peter Ayres  
Manager Sydney Local Government  
SYDNEY  
(by Delegation)

##### RELEVANT INFORMATION :

- \* No fees are refundable on the surrender of a licence (s.80 of the Protection of the Environment Act 1997).



N009108

- \* On the date that the surrender of your licence takes effect the current licence fee period comes to an end. However, the surrender of your licence does not affect your liability to pay fees owing to the EPA for that licence fee period or for any earlier licence fee period.
- \* If you have not already paid the administrative fee for the licence fee period which has just come to an end on the surrender of your licence you must still do so. Please note that the administrative fee for a licence fee period must be paid no later than 60 days after the beginning of that licence fee period. (cl. 29 of the Protection of the Environment Operations (General) Regulation 1998).
- \* Any load-based fees payable in relation to the licence fee period ending on the surrender of the licence must be paid no later than 60 days after the surrender of the licence. (cl.31 of the Protection of the Environment Operations (General) Regulation 1998).

N009125

Notice No: 009125      Issued: 06-Jan-2000  
Notice Type: POEO S.80 SURRENDER OF TRANS.LICENCE  
Premise: HOOVER COMPANY (AUSTRALIA) PTY LTD  
          MEADOWBANK 2114  
Industry: AN ACTIVITY  
Local Gov: RYDE  
Catchment: SYDNEY COAST-GEORGES RVR

.....  
Approval of the surrender of a licence

Section 80(2) Protection of the Environment Operations Act 1997

Registered Post

HOOVER COMPANY (AUSTRALIA) PTY LTD  
P.O. BOX 101  
WEST RYDE NSW 2114

Our ref: N 009125 L 004835  
          501572/B01

Date: 6 January 2000

#### APPROVAL OF THE SURRENDER OF A LICENCE

##### BACKGROUND

- (a) HOOVER COMPANY (AUSTRALIA) PTY LTD ("the licensee") applied to the Environment Protection Authority ("EPA") to surrender the licence 004835.

#### APPROVAL OF THE SURRENDER OF A LICENCE

The surrender of licence 004835 is approved.

This notice is issued under section 80(2) of the Protection of the Environment Operations Act 1997.

The surrender of the licence takes effect when this notice is given to the licensee.

The approval of the surrender is subject to the following conditions :-

1. If you have not already done so, you must provide the EPA with a Certificate of Compliance in relation to compliance with the conditions of your licence during the period beginning on the date your licence was granted or, if it was a renewed licence, the date of its last renewal and ending on the date of surrender of the licence.
2. The Certificate must be provided to the EPA as specified in accordance with your conditions of the licence, the surrender of which this notice approves.
3. The content and form of the Certificate must be as set out in accordance with your licence conditions.
4. The Certificate must be signed as set out in your licence conditions.



N009125

.....  
Peter Ayres  
Manager Sydney Local Government  
SYDNEY  
(by Delegation)

RELEVANT INFORMATION :

- \* No fees are refundable on the surrender of a licence (s.80 of the Protection of the Environment Operations Act 1997).
- \* On the date that the surrender of your licence takes effect the current licence fee period comes to an end. However, the surrender of your licence does not affect your liability to pay fees owing to the EPA for that licence fee period or for any earlier licence fee period.

N011065

Notice No: 011065      Issued: 11-Oct-2000  
Notice Type: POEO S.80 SURRENDER OF TRANS.LICENCE  
Premise: WATERS TRADING  
RYDE 2112  
Industry: AGRICULTURAL PRODUCE - OTHER  
Local Gov: RYDE  
Catchment: SYDNEY COAST-GEORGES RVR

.....  
Approval of the surrender of a licence

Section 80(2) Protection of the Environment Operations Act 1997

Registered Post

WATERS TRADING PTY LIMITED  
4-8 PARKER STREET  
FOOTSCRAY VIC 3011

Our ref: N 011065 L 001051  
501094/B01

Date: 11 October 2000

#### APPROVAL OF THE SURRENDER OF A LICENCE

##### BACKGROUND

- (a) WATERS TRADING PTY LIMITED ("the licensee") applied to the Environment Protection Authority ("EPA") to surrender the licence 001051.

##### APPROVAL OF THE SURRENDER OF A LICENCE

The surrender of licence 001051 is approved.

This notice is issued under section 80(2) of the Protection of the Environment Operations Act 1997.

The surrender of the licence takes effect when this notice is given to the licensee.

The approval of the surrender is subject to the following conditions :-

1. If you have not already done so, you must provide the EPA with a Certificate of Compliance in relation to compliance with the conditions of your licence during the period beginning on the date your licence was granted or, if it was a renewed licence, the date of its last renewal and ending on the date of surrender of the licence.
2. The Certificate must be provided to the EPA as specified in accordance with your conditions of the licence, the surrender of which this notice approves.
3. The content and form of the Certificate must be as set out in accordance with your licence conditions.
4. The Certificate must be signed as set out in your licence conditions.