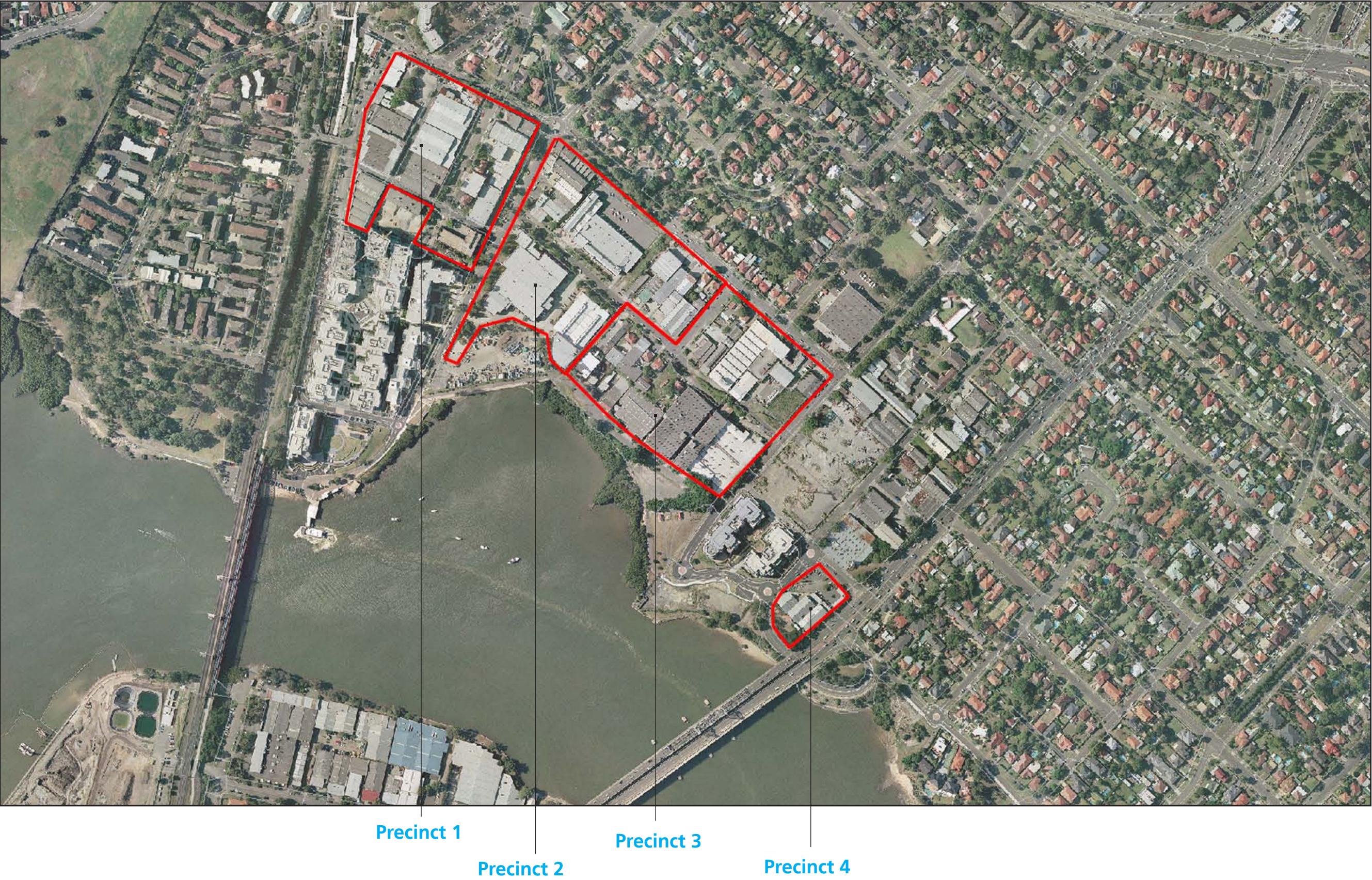
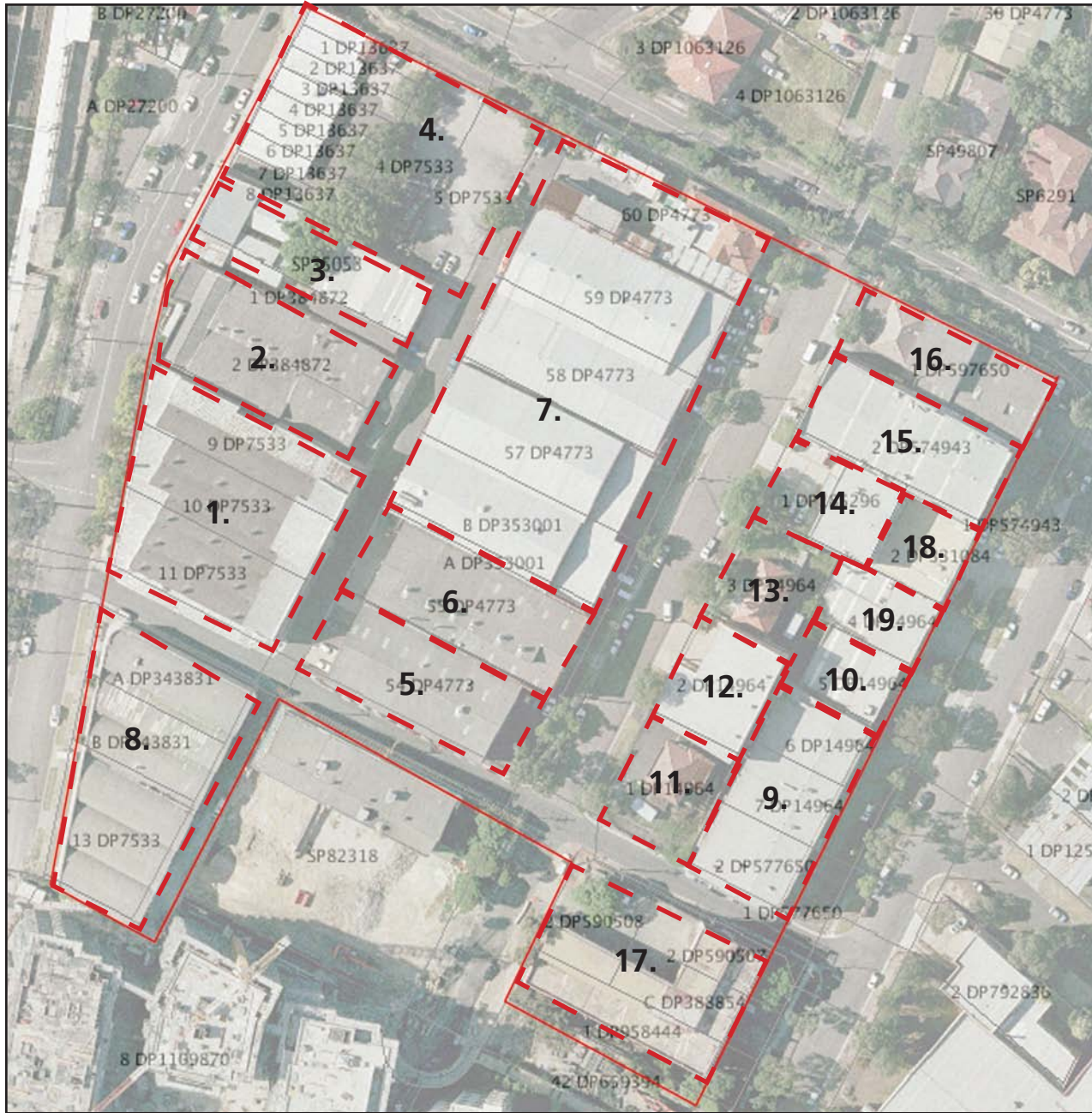


MEADOWBANK MASTERPLAN SITE ANALYSIS





## Precinct 1: Aerial Zoom and Sub Lots



Meadowbank Masterplan - Site Analysis

Precinct 1

Sub Lot	Address	LOT	DP	No. of Stories	On-Site Carparking (approx.)	Adjacent Street Front Carparking	Land Use	Significant Trees	Age of Building	Vehicle Use on Industrial Land
1	18-20 Railway Road, Meadowbank	9 to 11	7533	2	0	0	Industrial	0	20+ years	n/a
2	13-17 Railway Road, Meadowbank	2	384872	2	0	3	Commercial	0	20+ years	n/a
3	9-11 Railway Road, Meadowbank	SP	35053	2	0	3	Commercial	0	20+ years	n/a
4	8 Railway Road, Meadowbank	1 to 8, 4, 5	13637, 7533	2	21	4	Commercial	0	20+ years	n/a
5	13 Angus Street, Meadowbank	54	4773	2	10	4	Industrial	2 on nature strip	20+ years	1 x loading dock
6	11 Angus Street, Meadowbank	55	4773	2	3	18	Industrial	0	20+ years	1 x loading dock
7	9-17 Angus Street, Meadowbank	B to 60	4773	2	12	30	Industrial	3 on nature strip	15+ years	2 x loading docks
8	21 Railway Road, Meadowbank	A, B, 13	343831, 343831, 7533	2	0	30	Industrial	0	20+ years	2 x loading docks
9	127 Bowden Street Meadowbank	6, 7, 2	14964	3	14	5	Industrial	0	20+ years	n/a
10	125 Bowden Street, Meadowbank	5	14964	2	4	2	Industrial	0	20 + years	Small trucks
11	8 Angus Street, Meadowbank	1	14964	1	5	18	Commercial	0	20+ years	n/a
12	6 Angus Street, Meadowbank	2	14964	2	1	18	Industrial	0	15+ years	2 x loading docks
13	4 Angus Street, Meadowbank	3	14964	1	1	18	Industrial	3 on nature strip	20+ years	n/a
14	2A Angus Street, Meadowbank	1	185296	2	32	18	Industrial	0	10+ years	1 x loading dock
15	119 Bowden Street, Meadowbank	2	574943	2	28	2	Industrial/commercial	0	20+ years	1 x loading dock
16	2AA Bowden Street, Meadowbank	1	597650	2	5	1	Commercial	1	20+ years	n/a
17	133A Underdale Lane, Meadowbank	42, C, 1, 1 to 2, 2	659394, 388854, 958444, 590507, 590508	2 to 3	33	2	Industrial	0	20+ years	n/a
18	121 Bowden Street, Meadowbank	2	331084	3	8	2	Industrial	0	20+ years	n/a



Sub Lot 1) Lot 9-11 DP 7533, 18-20 Railway Road, Meadowbank



Sub Lot 2) Lot 2 DP 384872, 13-17 Railway Road, Meadowbank



Sub Lot 3) SP 35053, 9-11 Railway Road, Meadowbank



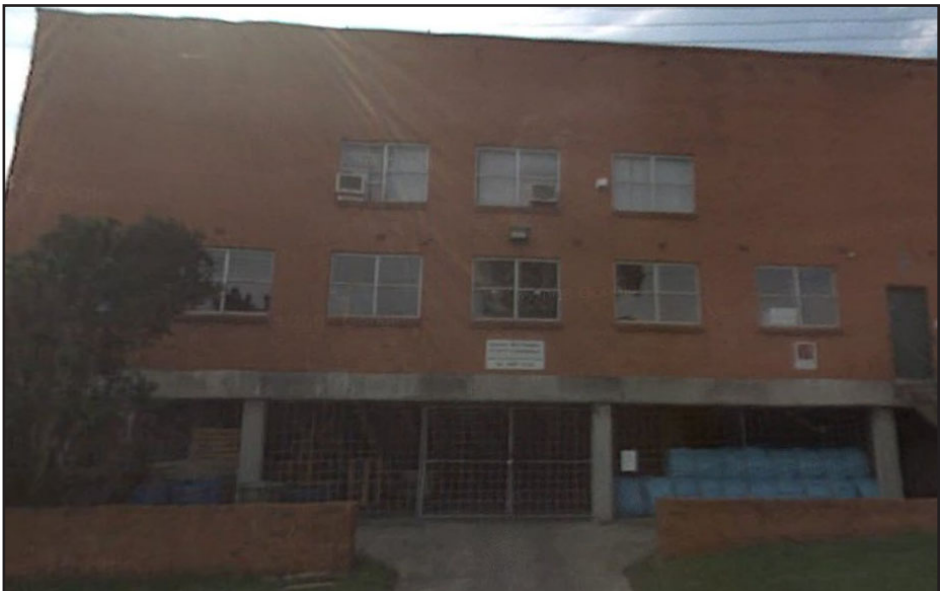
Sub Lot 4) Lot 1-8, 4-5 DP 13637, 7533, 8 Railway Road, Meadowbank



Sub Lot 5) Lot 54 DP 4773, 13 Angus Street, Meadowbank



Sub Lot 6) Lot 55 DP 4773, 11 Angus Street, Meadowbank



Sub Lot 7) Lot B DP 35001, Lot 57-60 DP 4773 to 2, 9-17 Angus Street, Meadowbank



Sub Lot 8) Lot A-B DP 343831, Lot 13 DP 7533, 21 Railway Road, Meadowbank



Sub Lot 9) Lot 2 DP 577650, Lot 7 DP 14964, Lot 6 DP 14964, 127 Bowden Street Meadowbank





Sub Lot 10) Lot 5 DP 14964, 125 Bowden Street, Meadowbank



Sub Lot 11) Lot 1 DP 14964, 8 Angus Street, Meadowbank



Sub Lot 12) Lot 2 DP 14964, 6 Angus Street, Meadowbank



Sub Lot 13) Lot 3 DP 14964, 4 Angus Street, Meadowbank



Sub Lot 14) Lot 1 DP 185296, 2A Angus Street, Meadowbank



Sub Lot 15) Lot 2 DP 574943, 119 Bowden Street, Meadowbank



Sub Lot 16) Lot 1 DP 597650, 2AA Bowden Street, Meadowbank



Sub Lot 17) Lot 2 DP 590508, Lot 2 DP 590507, Lot C DP 388854, Lot 1DP 958444, Lot 42 DP 659394, 133A Underdale Lane, Meadowbank



Sub Lot 18) Lot 2 DP 332084, 121 Bowden Street, Meadowbank

