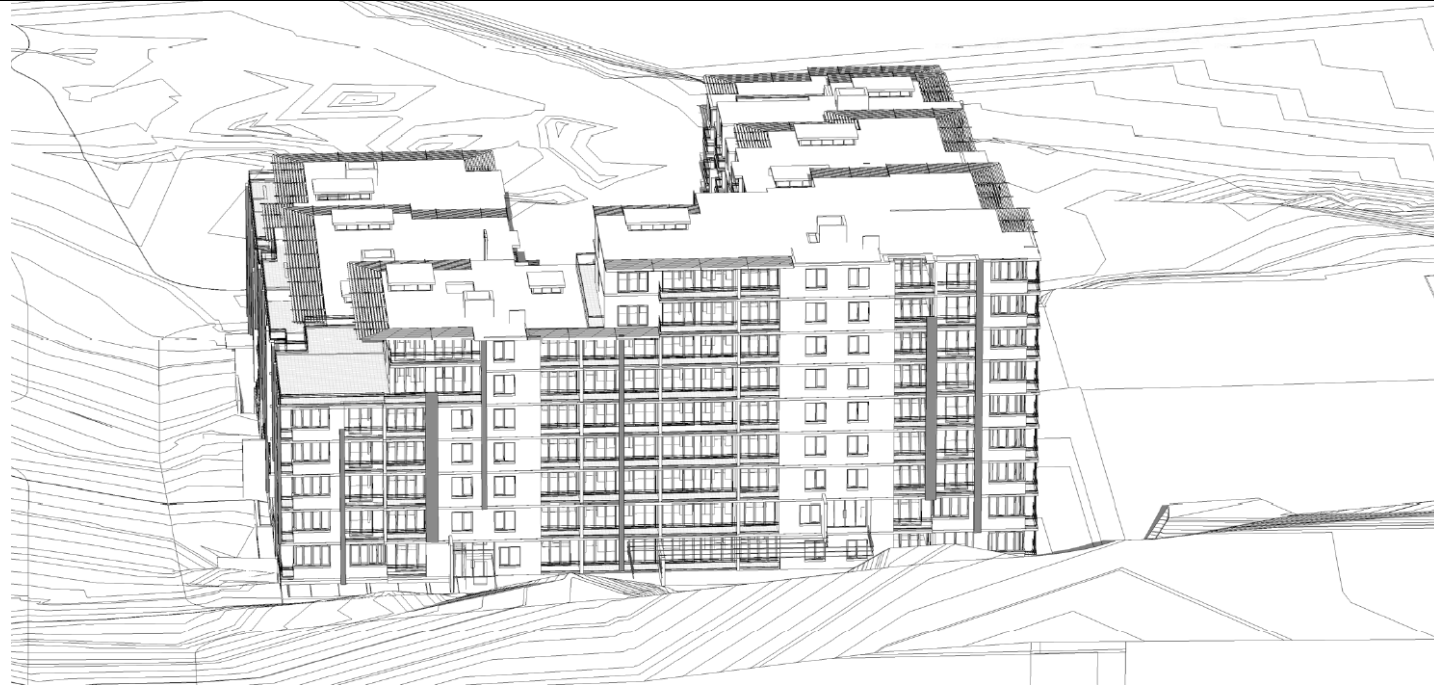


APPENDIX A: VIEWS FROM THE SUN

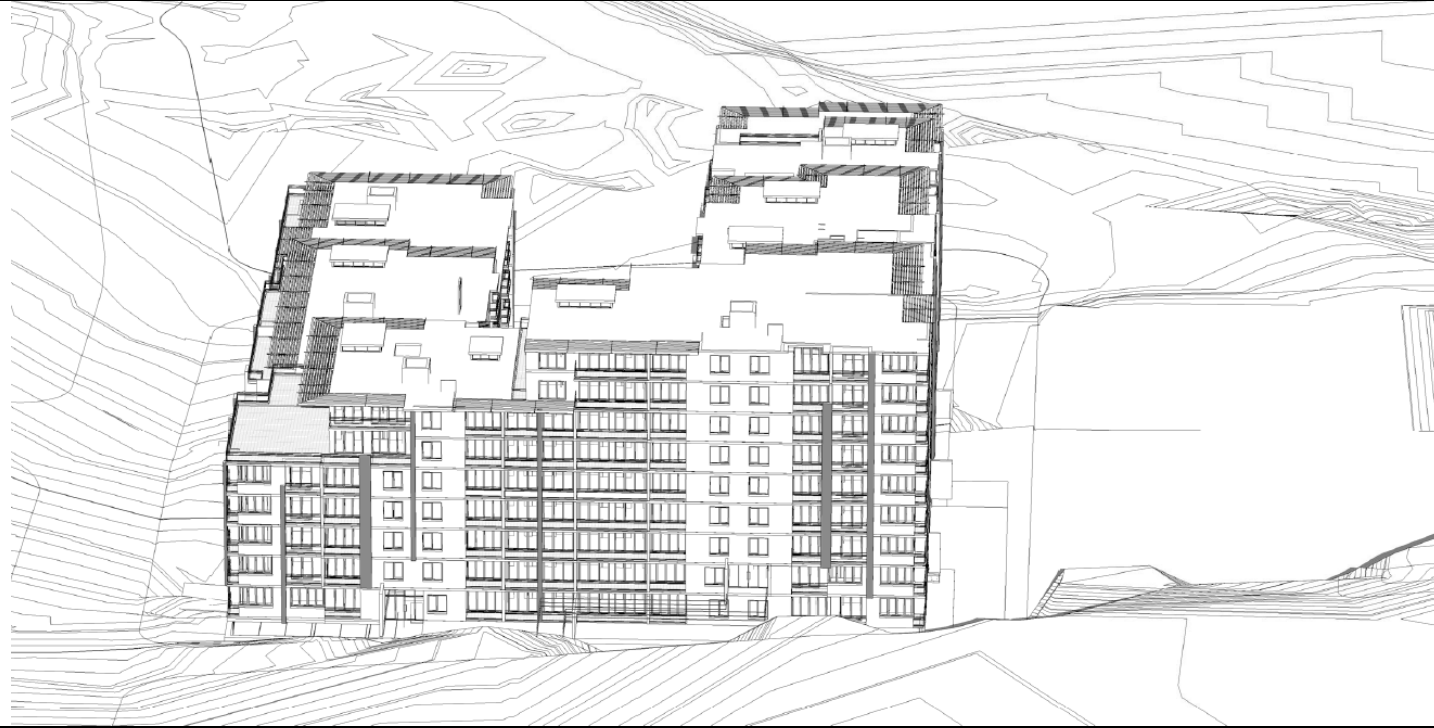
The following are 'views from the sun' on a half-hourly basis prepared by the Architects to my instructions, and from my solar geometry data, and independently checked by me.

8		
8.30		

9



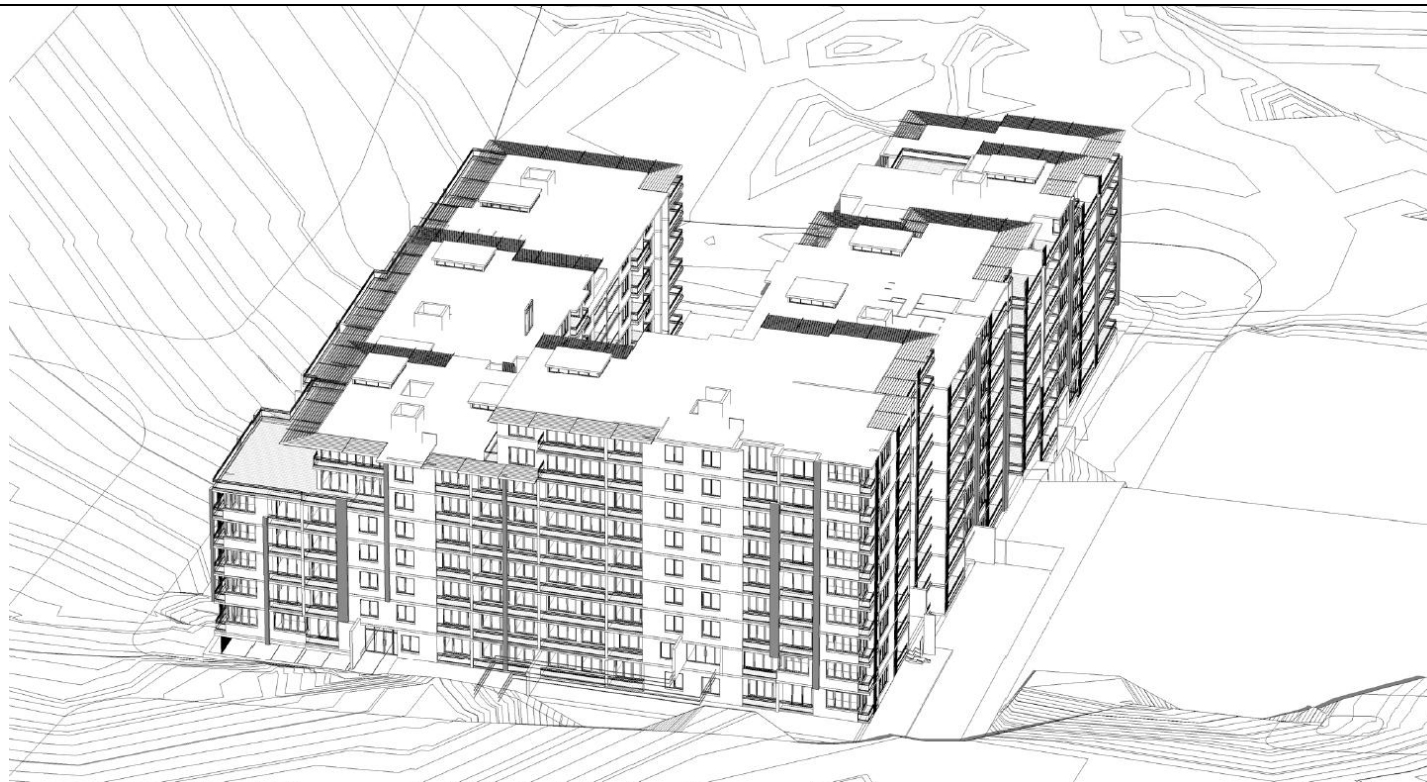
9.30

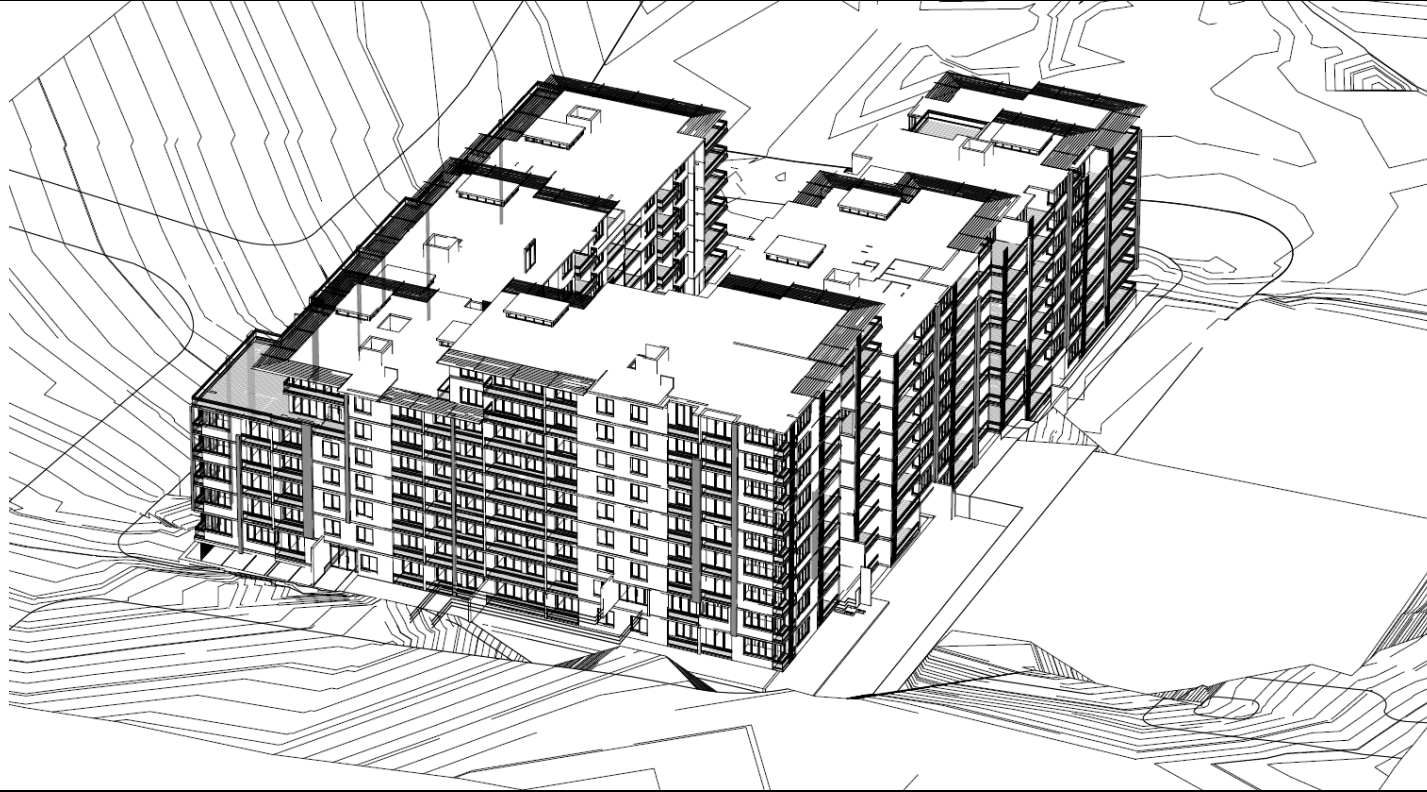


10



10.30





11.30





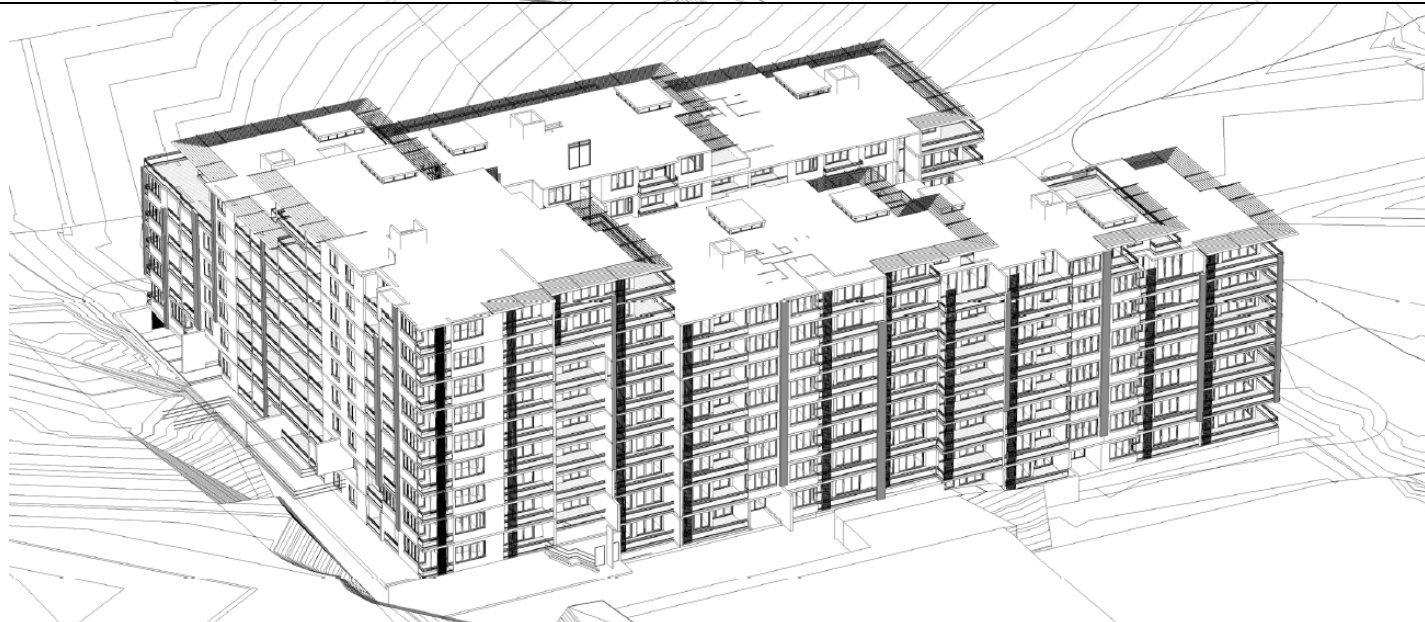
12.30



1



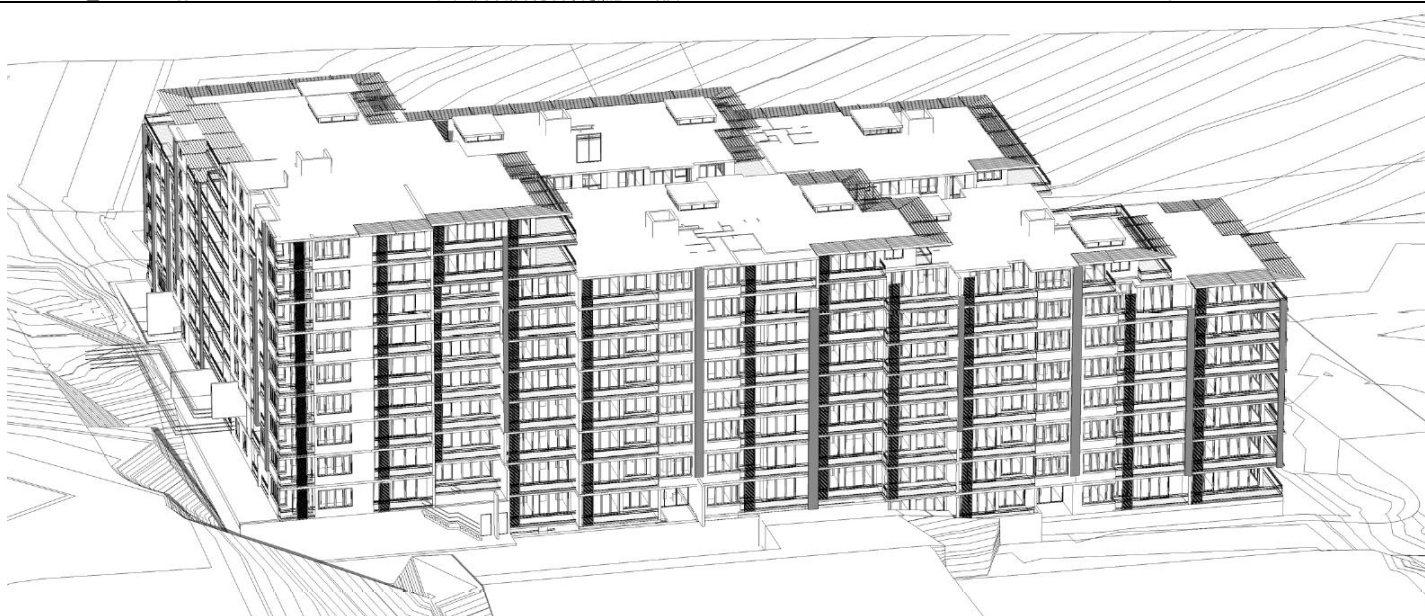
1.30



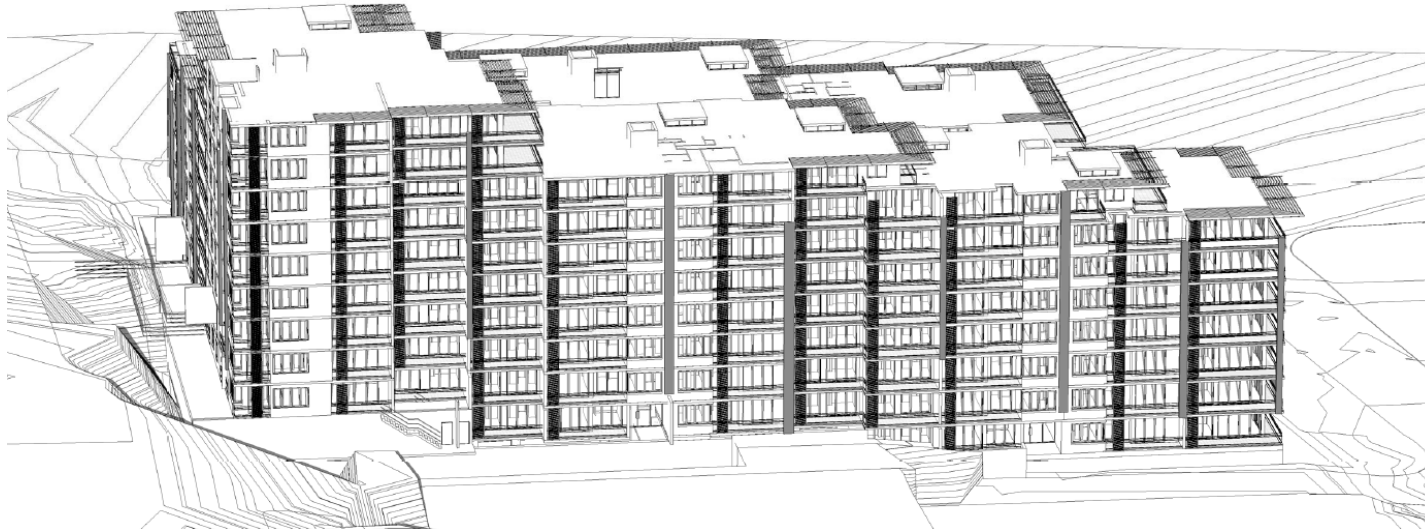
2



2.30



3



3.30



4



APPENDIX B: VENTILATION STATUS OF INDIVIDUAL APARTMENTS

The following table sets out in full my characterisation of the natural ventilation status of individual apartments.

Level	Unit No.	Cross ventilated	Enhanced single sided ventilation	Single aspect
UB	UB19	Yes		
	UB20			Yes
	UB21	Yes		
	UB22			Yes
	UB23	Yes		
	UB24			Yes
	UB25		Yes	
	UB26	Yes		
LG	UB27		Yes	
	UB28			Yes
	LG13			Yes
	LG14	Yes		
	LG15		Yes	
	LG16		Yes	
	LG17	Yes		
	LG18			Yes
	LG19	Yes		
	LG20		Yes	
	LG21	Yes		
	LG22			Yes
	LG23	Yes		
	LG24			Yes
	LG25		Yes	
	LG26	Yes		
	LG27		Yes	
	LG28		Yes	
	LG29	Yes		
	LG30			Yes
	LG31			Yes
	LG32	Yes		
	LG33		Yes	
	LG34		Yes	
G	G01		Yes	
	G02		Yes	
	G03	Yes		
	G04			Yes
	G05			Yes
	G06	Yes		

Level	Unit No.	Cross ventilated	Enhanced single sided ventilation	Single aspect
	G07	Yes		
	G08			Yes
	G09			Yes
	G10	Yes		
	G11			Yes
	G12			Yes
	G13			Yes
	G14	Yes		
	G15		Yes	
	G16		Yes	
	G17	Yes		
	G18			Yes
	G19	Yes		
	G20		Yes	
	G21	Yes		
	G22			Yes
	G23	Yes		
	G24			Yes
	G25		Yes	
	G26	Yes		
	G27		Yes	
	G28		Yes	
	G29	Yes		
	G30			Yes
	G31			Yes
	G32	Yes		
	G33		Yes	
	G34		Yes	
1	101		Yes	
	102		Yes	
	103	Yes		
	104			Yes
	105			Yes
	106	Yes		
	107	Yes		
	108		Yes	
	109		Yes	
	110	Yes		
	111			Yes
	112			Yes
	113			Yes
	114	Yes		
	115		Yes	
	116		Yes	

Level	Unit No.	Cross ventilated	Enhanced single sided ventilation	Single aspect
	117	Yes		
	118			Yes
	119	Yes		
	120		Yes	
	121	Yes		
	122		Yes	
	123	Yes		
	124		Yes	
	125		Yes	
	126	Yes		
	127		Yes	
	128		Yes	
	129	Yes		
	130			Yes
	131			Yes
	132	Yes		
	133		Yes	
	134		Yes	
2	201		Yes	
	202		Yes	
	203	Yes		
	204			Yes
	205			Yes
	206	Yes		
	207	Yes		
	208		Yes	
	209		Yes	
	210	Yes		
	211			Yes
	212			Yes
	213			Yes
	214	Yes		
	215		Yes	
	216		Yes	
	217	Yes		
	218			Yes
	219	Yes		
	220		Yes	
	221	Yes		
	222		Yes	
	223	Yes		
	224		Yes	
	225		Yes	
	226	Yes		

Level	Unit No.	Cross ventilated	Enhanced single sided ventilation	Single aspect
	227		Yes	
	228		Yes	
	229	Yes		
	230			Yes
	231			Yes
	232	Yes		
	233		Yes	
	234		Yes	
3	301		Yes	
	302		Yes	
	303	Yes		
	304			Yes
	305			Yes
	306	Yes		
	307	Yes		
	308		Yes	
	309		Yes	
	310	Yes		
	311			Yes
	312			Yes
	313			Yes
	314	Yes		
	315		Yes	
	316		Yes	
	317	Yes		
	318			Yes
	319	Yes		
	320	Yes		
	322		Yes	
	323	Yes		
	324		Yes	
	325		Yes	
	326	Yes		
	327		Yes	
	328		Yes	
	329	Yes		
	330			Yes
	331			Yes
	332	Yes		
	333		Yes	
	334		Yes	
4	401		Yes	
	402		Yes	
	403	Yes		

Level	Unit No.	Cross ventilated	Enhanced single sided ventilation	Single aspect
	404			Yes
	405			Yes
	406	Yes		
	407	Yes		
	408		Yes	
	409		Yes	
	410	Yes		
	411			Yes
	412			Yes
	413			Yes
	415	Yes		
	416	Yes		
	418	Yes		
	423	Yes		
	424		Yes	
	425		Yes	
	426	Yes		
	427		Yes	
	428		Yes	
	429	Yes		
	430			Yes
	431			Yes
	432	Yes		
	433		Yes	
	434		Yes	
5	501		Yes	
	502		Yes	
	503	Yes		
	504			Yes
	505			Yes
	506	Yes		
	507	Yes		
	508		Yes	
	509	Yes		
	512		Yes	
	523	Yes		
	524	Yes		
	528	Yes		
	529	Yes		
	530			Yes
	531		Yes	
	532	Yes		
	533		Yes	
	534		Yes	

Level	Unit No.	Cross ventilated	Enhanced single sided ventilation	Single aspect
6	601		Yes	
	602		Yes	
	603	Yes		
	604			Yes
	605			Yes
	606	Yes		
	607	Yes		
	608		Yes	
	609	Yes		
	612		Yes	
	629	Yes		
	630		Yes	
	631	Yes		
	632	Yes		
	633		Yes	
	634		Yes	
7	701		Yes	
	702		Yes	
	703	Yes		
	704	Yes		
	705	Yes		
	706	Yes		
8	801		Yes	
	802		Yes	
	803	Yes		
	804	Yes		
	805	Yes		
	806	Yes		